

V&V Reference Report

L2 ASCDS Version : 8.4.5

Observation 358 - L2 Version 4
Chandra X-Ray Center

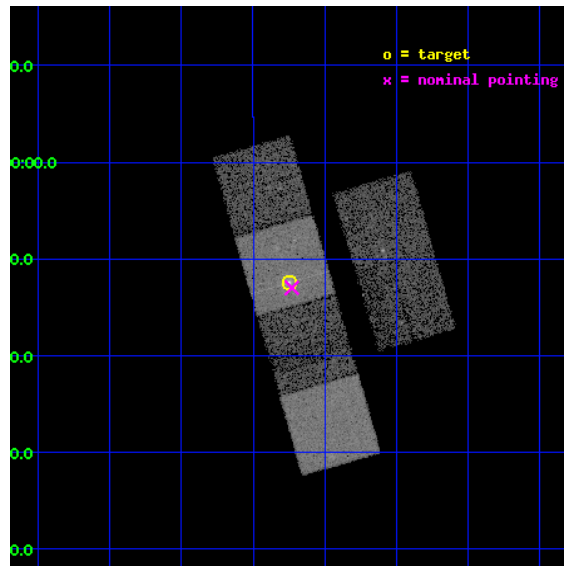
L2 Processing Date : Aug 31 2012

Contents

1	Front	2
2	OBI	3
2.1	OBI	3
2.1.1	Images	3
2.1.2	Bias	3
2.1.3	Parameters	4
2.1.4	Events	4
2.2	Compared Parameters	5
2.3	Aspect	6
2.4	Star Slots	9
2.4.1	Slot 3	9
2.4.2	Slot 4	10
2.4.3	Slot 5	11
2.4.4	Slot 6	12
2.4.5	Slot 7	13
2.5	FID Slots	14
2.5.1	Slot 0	14
2.5.2	Slot 1	15
2.5.3	Slot 2	16
A	Summary	17
A.1	Status	17
A.2	Comments	17

1 Front

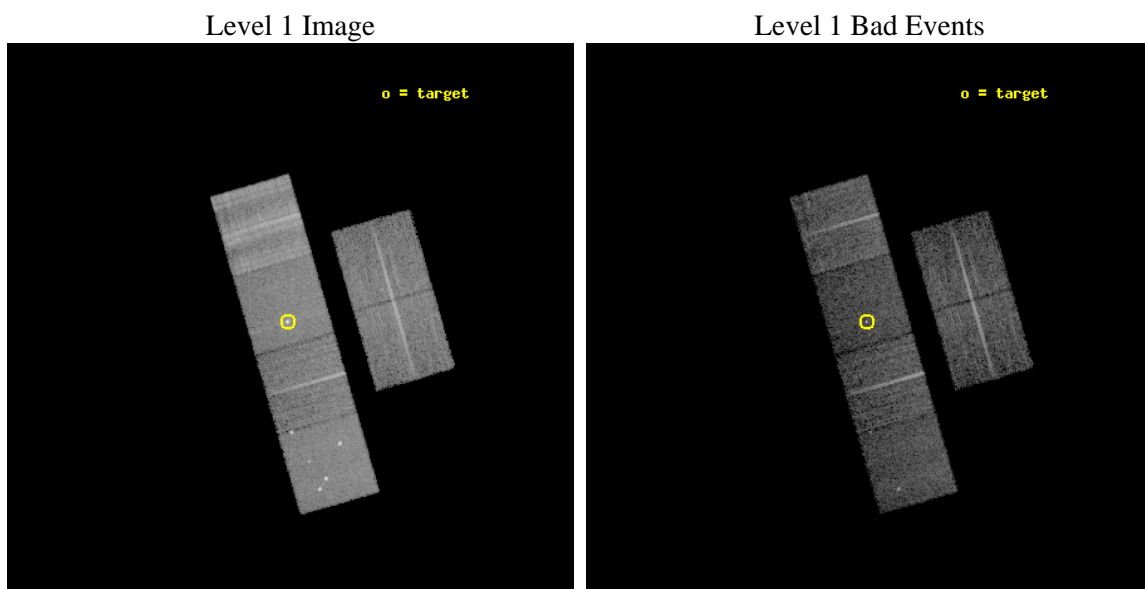
seq_num	700030	Sequence number
obs_id	358	Observation id
title	STUDIES OF RADIO JETS AND THE NARROW LINE REGIONS	Proposal title
observer	Professor Andrew Wilson	Principal investigator
object	NGC 5506	Source name
dtcycle	0	
cycle	P	events from which exps? Prim/Second/Both
ra_targ	213.311667	Observer's specified target RA [deg]
dec_targ	-3.2075	Observer's specified target Dec [deg]
ra_nom	213.30719054086	Nominal RA [deg]
dec_nom	-3.2164499618442	Nominal Dec [deg]
roll_nom	253.89577726011	Nominal Roll [deg]
revision	4	Processing version of data
ontime	8953.0199454725	Sum of GTIs [s]
livetime	8839.6514160615	Livetime [s]
ontime2	8953.0609854758	Sum of GTIs [s]
ontime3	8952.8968254775	Sum of GTIs [s]
ontime5	8952.9789054692	Sum of GTIs [s]
ontime6	8952.9378654808	Sum of GTIs [s]
ontime7	8953.0199454725	Sum of GTIs [s]
ontime8	8952.8557854742	Sum of GTIs [s]
l2events	90369	Number of level 2 events



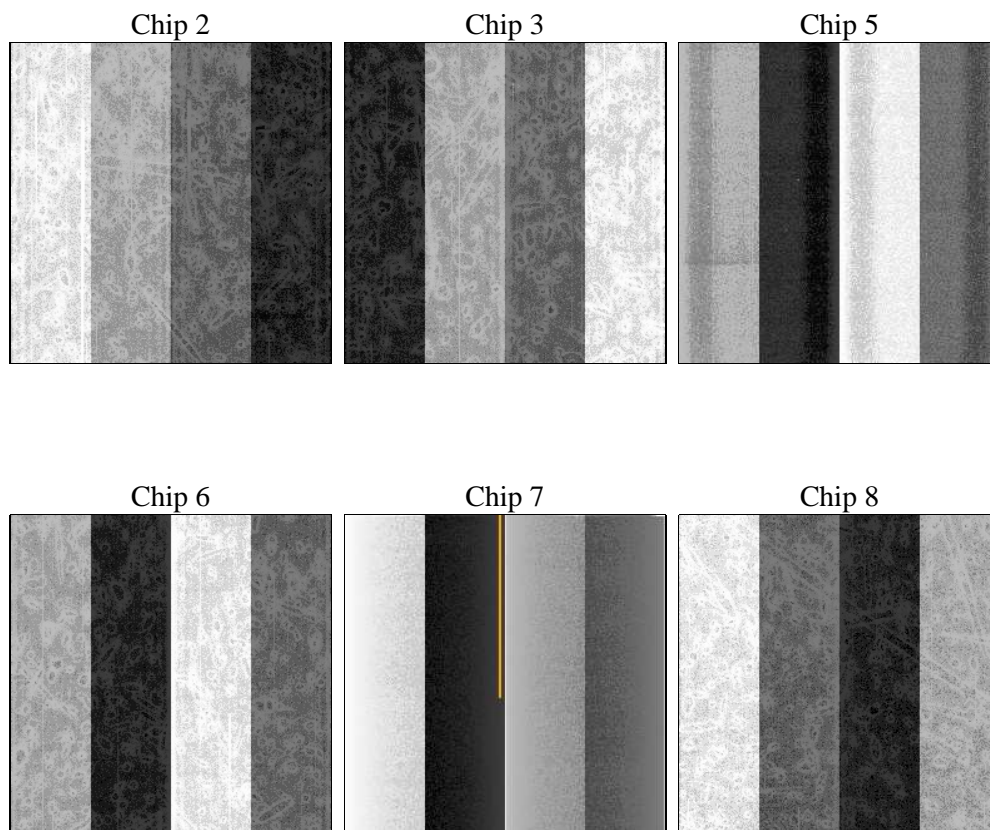
2 OBI

2.1 OBI

2.1.1 Images



2.1.2 Bias



2.1.3 Parameters

obi_num	0	Obi number	sched_exp_time	9000.000000	[s] Scheduled observation exposure time
ascdsver	8.4.5	Processing system revision	ontime	8953.0199454725	Sum of GTIs [s]
caldbver	4.5.1.1	 	ontime2	8953.0609854758	Sum of GTIs [s]
date	2012-08-31T12:35:41	Date and time of file creation	ontime3	8952.8968254775	Sum of GTIs [s]
revision	4	Processing version of data	ontime5	8952.9789054692	Sum of GTIs [s]
			ontime6	8952.9378654808	Sum of GTIs [s]
			ontime7	8953.0199454725	Sum of GTIs [s]
			ontime8	8952.8557854742	Sum of GTIs [s]
			l1events	418418	Number of level 1 events

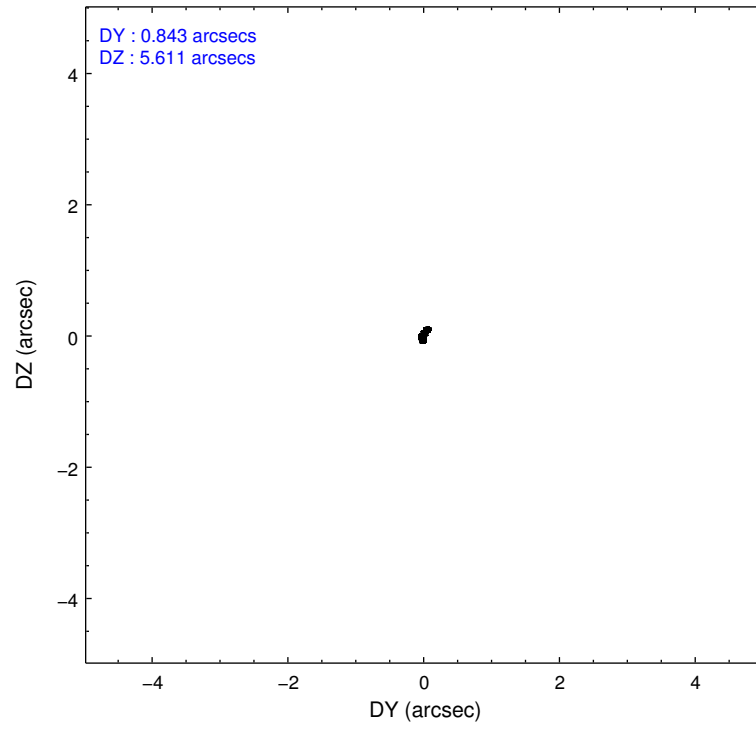
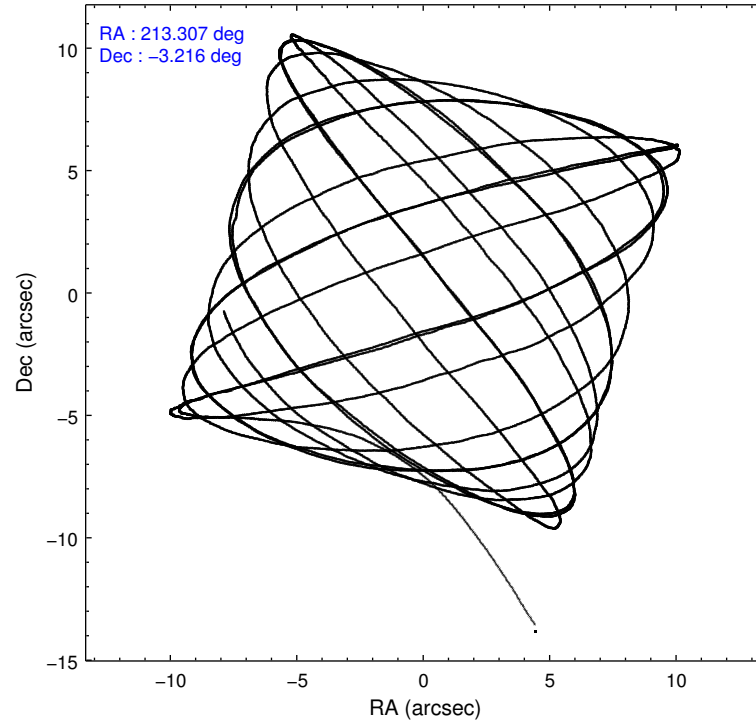
2.1.4 Events

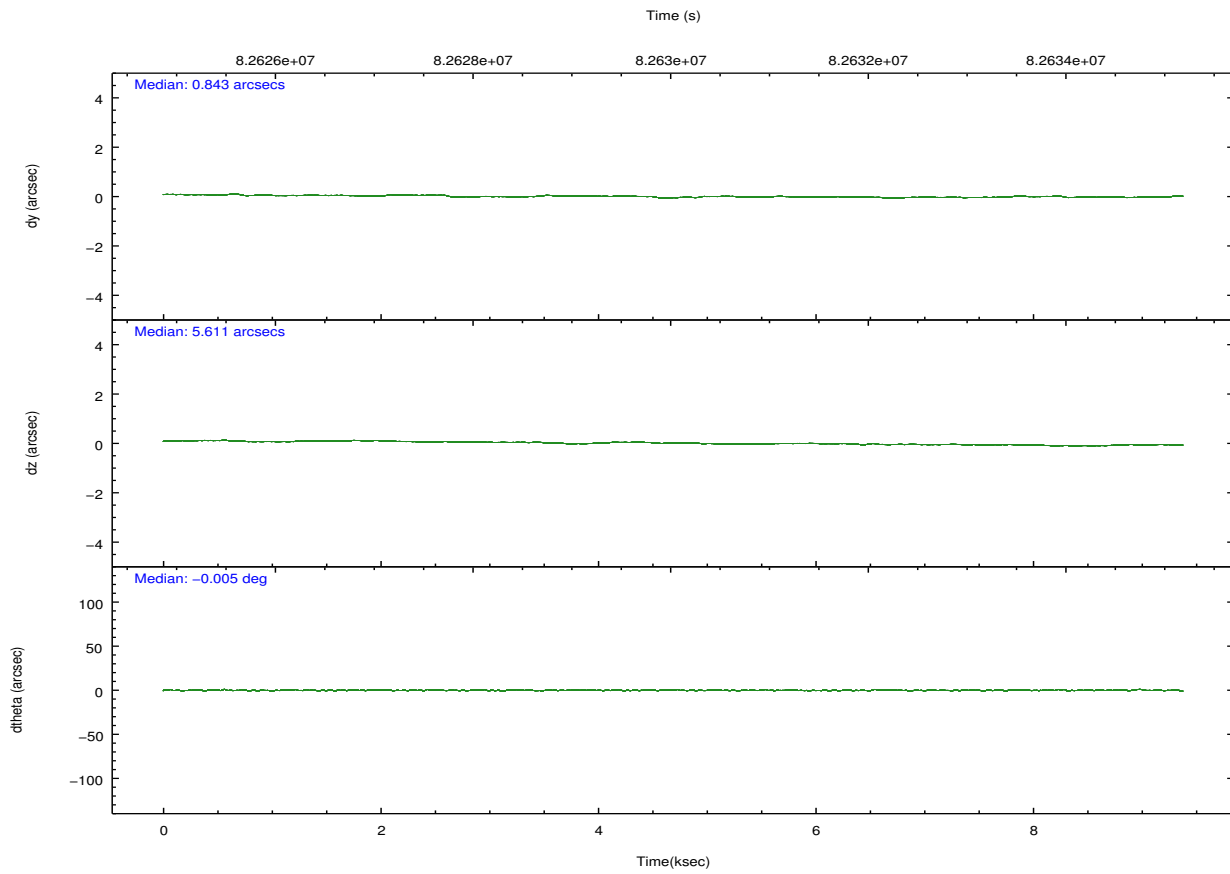
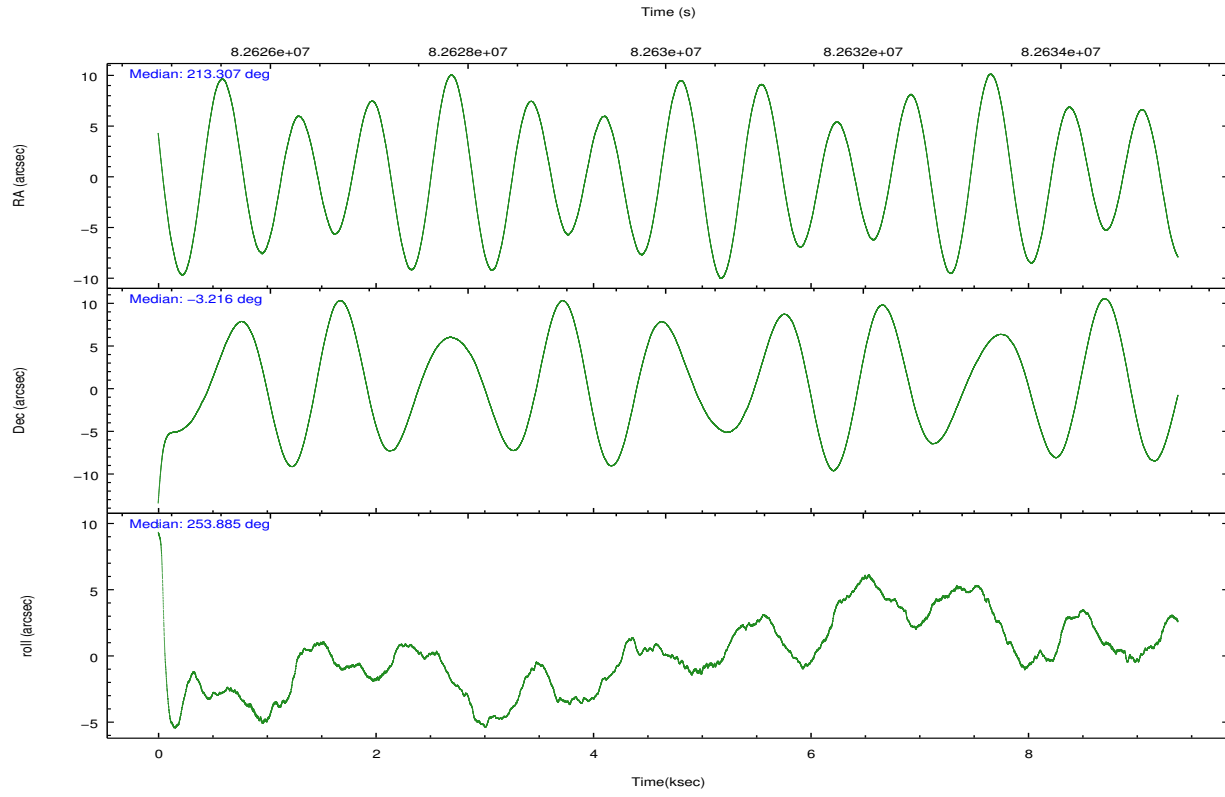
	ccd 2	ccd 3	ccd 5	ccd 6	ccd 7	ccd 8		ccd 2	ccd 3	ccd 5	ccd 6	ccd 7	ccd 8
level 1 events	57456	54876	75697	57287	69242	103860	grade 0 events	3482	3142	6799	3485	3893	16341
rejected events	49300	47068	38680	48916	37188	56651		6%	5%	8%	6%	5%	15%
rejected %	85%	85%	51%	85%	53%	54%	grade 1 events	31	16	181	34	117	142
								0%	0%	0%	0%	0%	0%
							grade 2 events	1948	1888	10541	2005	6734	6066
								3%	3%	13%	3%	9%	5%
							grade 3 events	516	549	1799	609	3062	8766
								0%	1%	2%	1%	4%	8%
							grade 4 events	674	607	1756	634	3050	7754
								1%	1%	2%	1%	4%	7%
							grade 5 events	1646	1848	5477	2004	6301	2867
								2%	3%	7%	3%	9%	2%
							grade 6 events	1544	1630	16140	1642	15335	8351
								2%	2%	21%	2%	22%	8%
							grade 7 events	47615	45196	33004	46874	30750	53573
								82%	82%	43%	81%	44%	51%

2.2 Compared Parameters

Parameter	Planned	Actual	Parameter	Planned	Actual
Instrument	ACIS	ACIS	Obspar format version number	7	7
Detector	ACIS-235678	ACIS-235678	Obspar file type	PREDICTED	ACTUAL
Grating	NONE	NONE	Obspar update status	NONE	UPDATED
Data mode	FAINT	FAINT	Number of optional ACIS chips dropped	0	0
Observation mode	POINTING	POINTING	On-chip summing requested	N	N
[deg] Pointing RA	213.300480	213.307190540861	Subarray requested	NONE	NONE
[deg] Pointing Dec	-3.189836	-3.216449961844205	Alternating exposures requested	N	N
[deg] Pointing Roll	253.738762	253.8957772601129	[s] Primary exposure time	0.000000	3.2
[mm] SIM focus pos	-0.684267	-0.6828225247311905			
[mm] SIM defocus	0	0.001444936568705701			
[mm] SIM translation stage pos	-190.132523	-190.1425803651734			
[mm] SIM translation stage offset	0	0.01005778216563158			
[s] Observation start time (MET)	82625709.184000	82624565.04426			
Observation start date	2000-08-14T07:34:05	2000-08-14T07:16:05			
[s] Observation end time (MET)	82634709.184000	82635523.83216999			
Observation end date	2000-08-14T10:04:05	2000-08-14T10:18:43			
Read mode	TIMED	TIMED			

2.3 Aspect



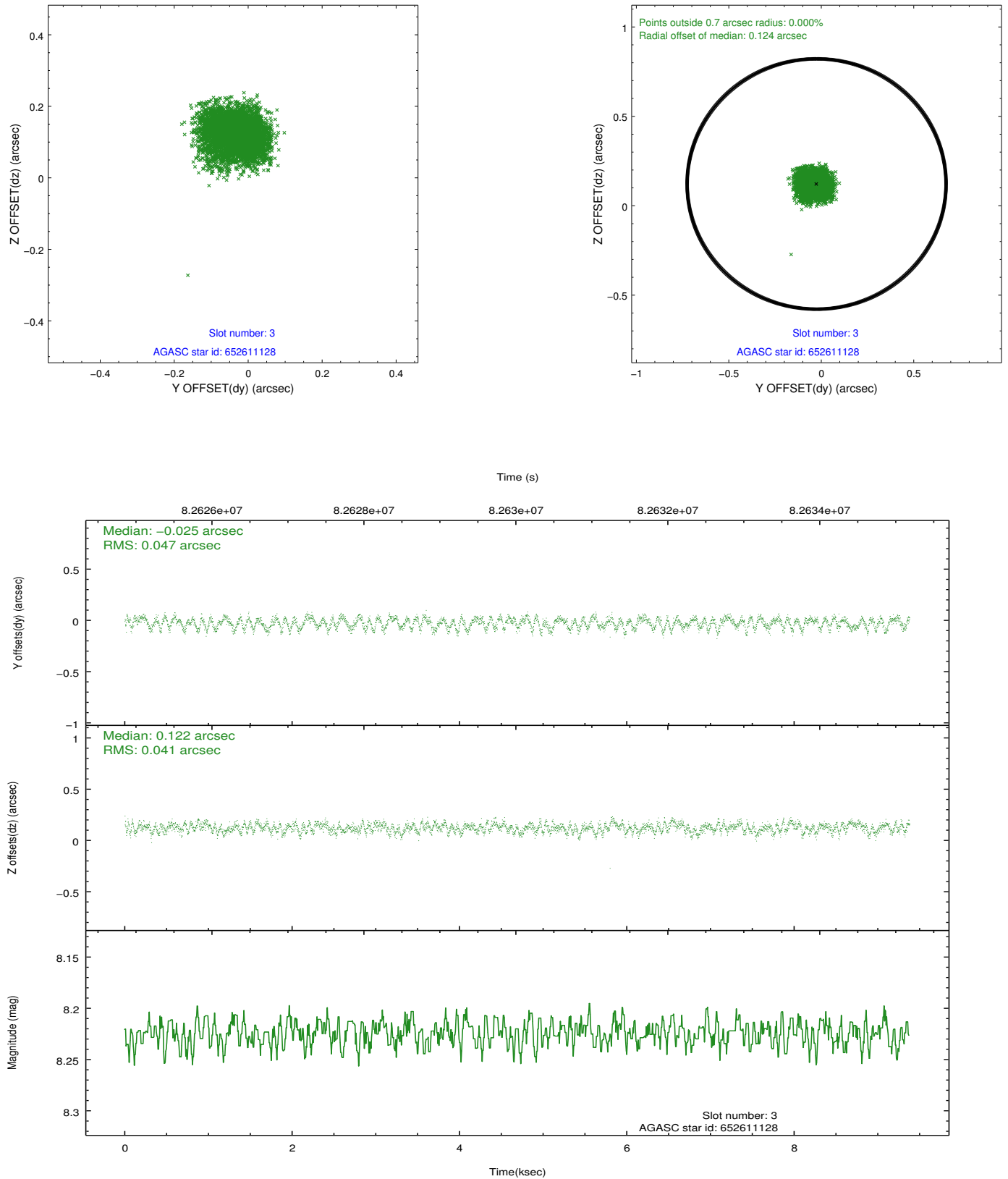


Slot Statistics

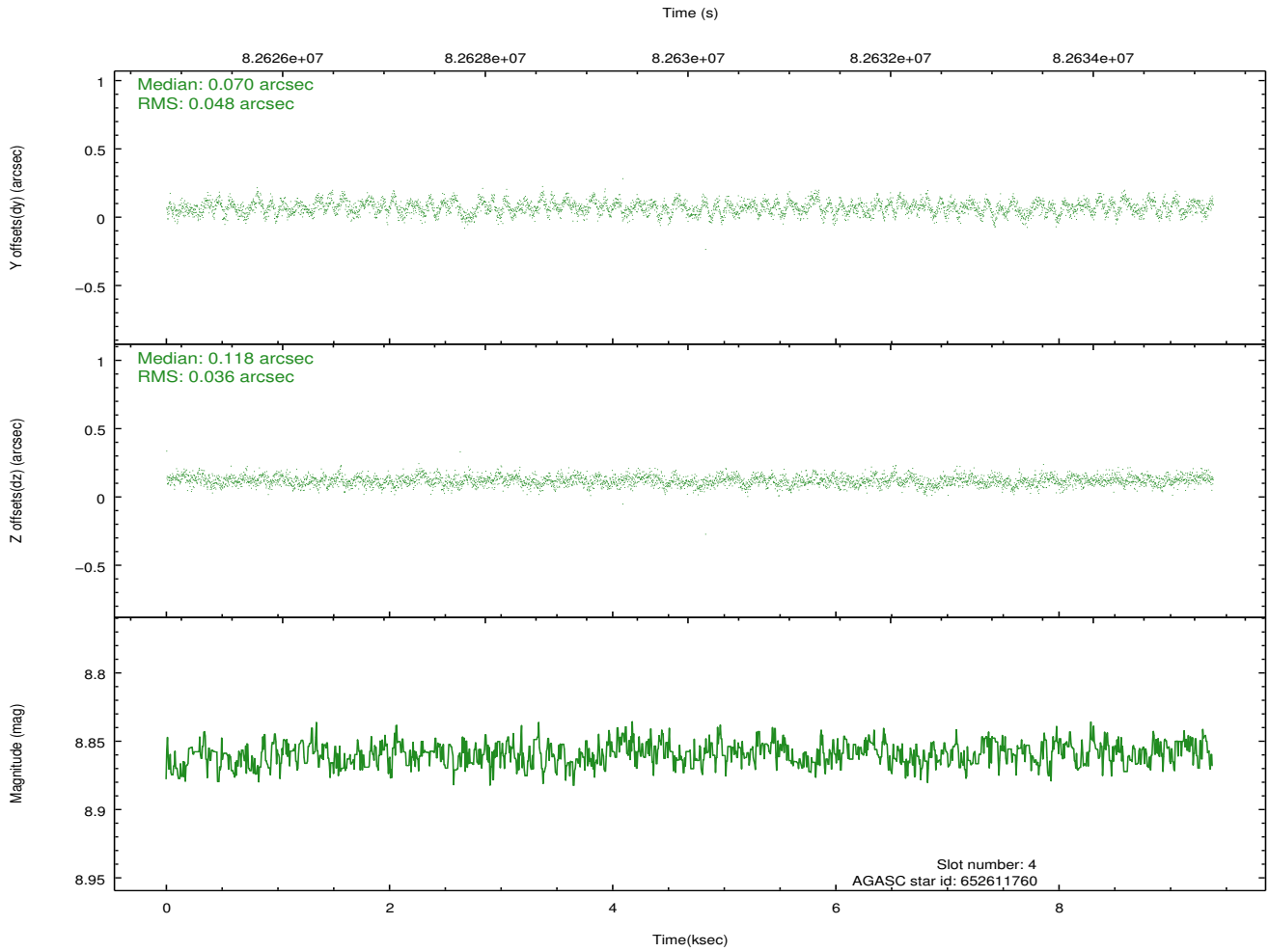
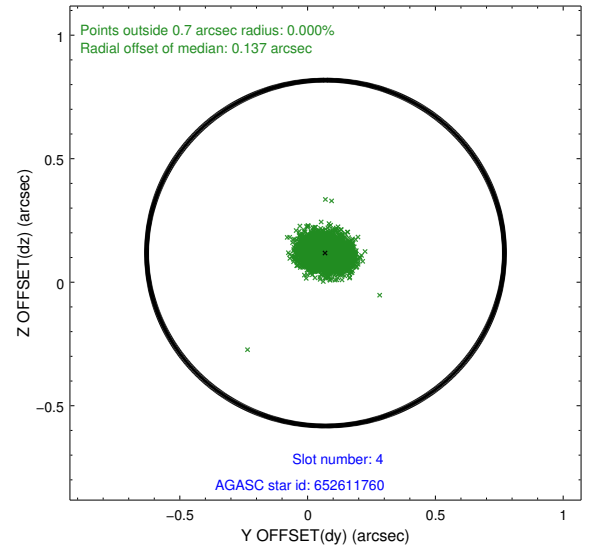
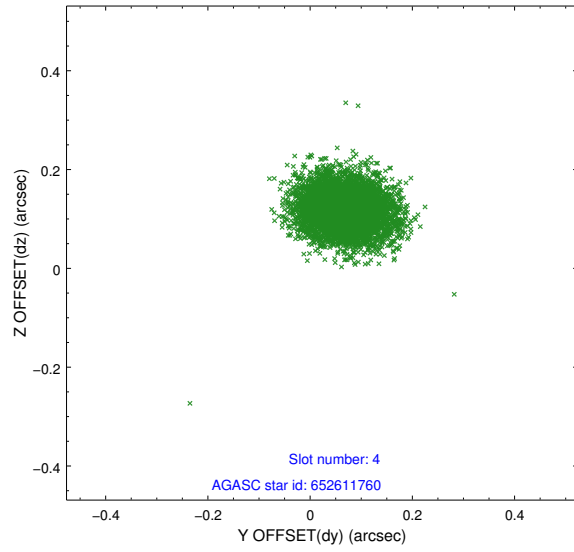
slot	status	id	mag	n_pts	med_dy	med_dz	dr1	dr2	ra	dec	mean_y	mean_z
0	FID	ACIS-S-2	7.11	2288	-0.044	-0.001	0.006	0.011	0.000000	0.000000	-753.46	-1726.71
1	FID	ACIS-S-4	7.21	2288	0.009	0.022	0.005	0.010	0.000000	0.000000	2159.59	181.24
2	FID	ACIS-S-5	7.24	2288	0.004	-0.012	0.007	0.012	0.000000	0.000000	-1805.53	175.49
3	GUIDE	652611128	8.22	4576	-0.025	0.122	0.067	0.106	213.732515	-3.626183	1073.64	1930.35
4	GUIDE	652611760	8.86	4574	0.070	0.118	0.064	0.103	213.522861	-3.750471	1714.28	1332.99
5	GUIDE	652607784	8.53	4574	-0.055	0.104	0.060	0.099	213.646988	-3.161185	-447.25	1167.24
6	GUIDE	652618120	9.31	4573	0.057	-0.201	0.095	0.152	213.822862	-3.450769	376.52	2065.47
7	GUIDE	652608240	9.61	4571	-0.042	-0.145	0.101	0.170	212.720785	-3.106340	296.23	-2084.08

2.4 Star Slots

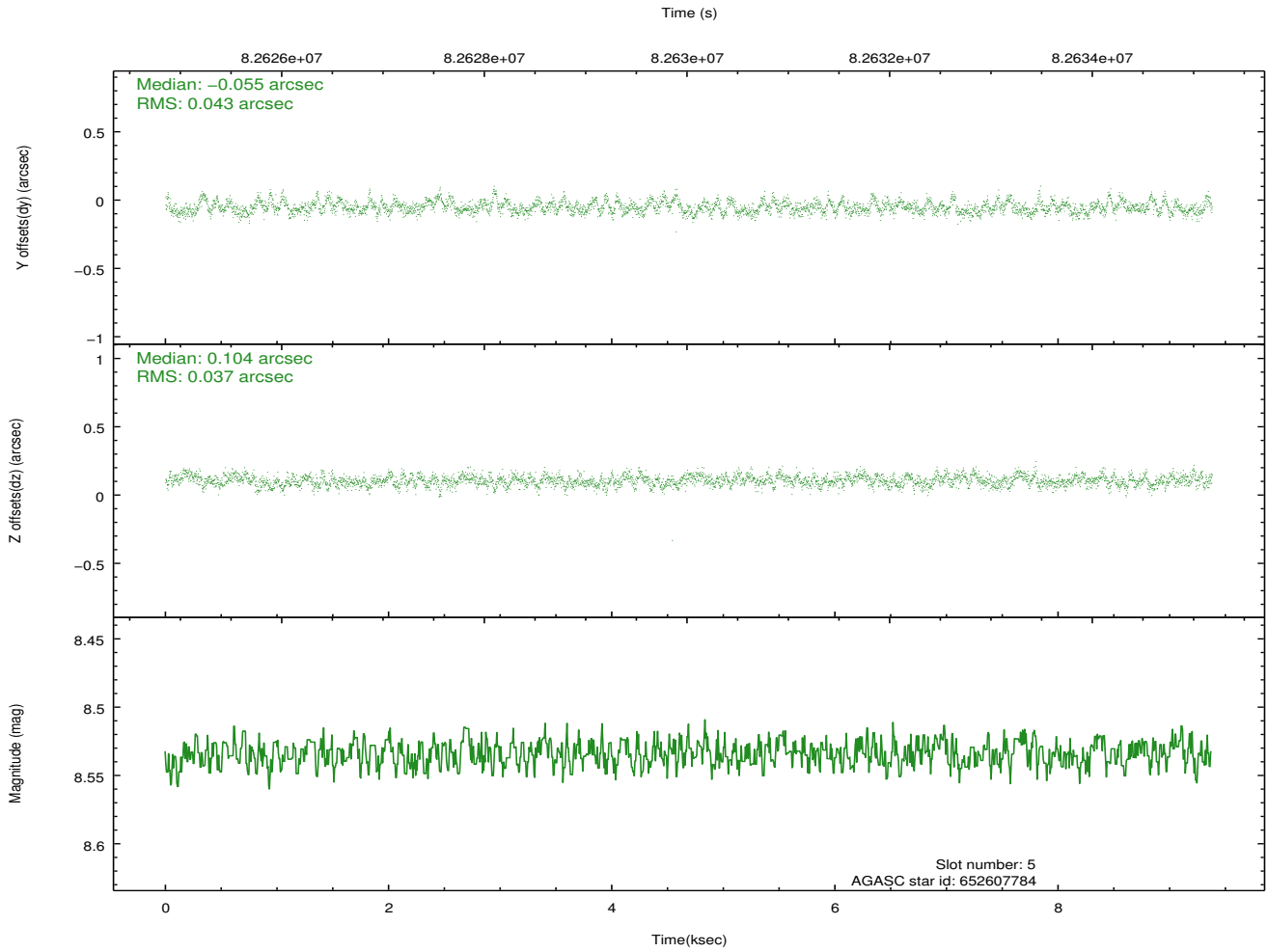
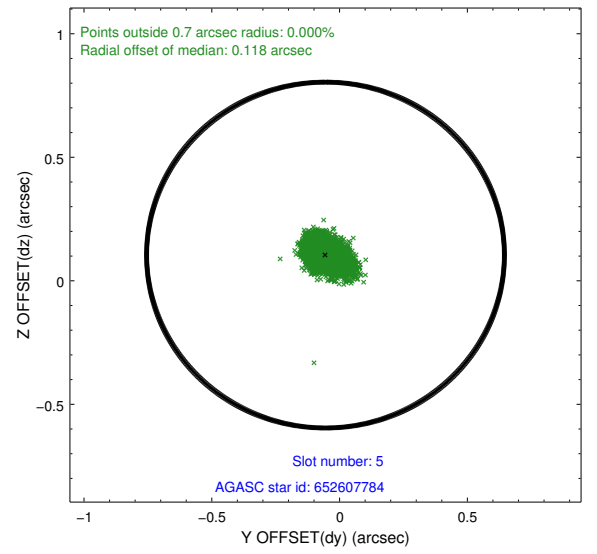
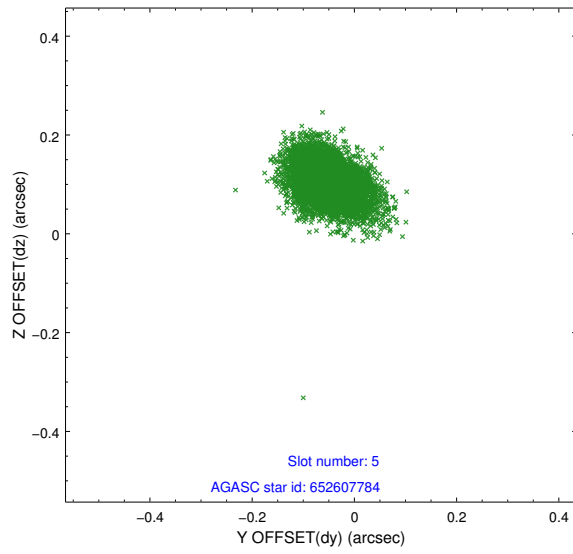
2.4.1 Slot 3



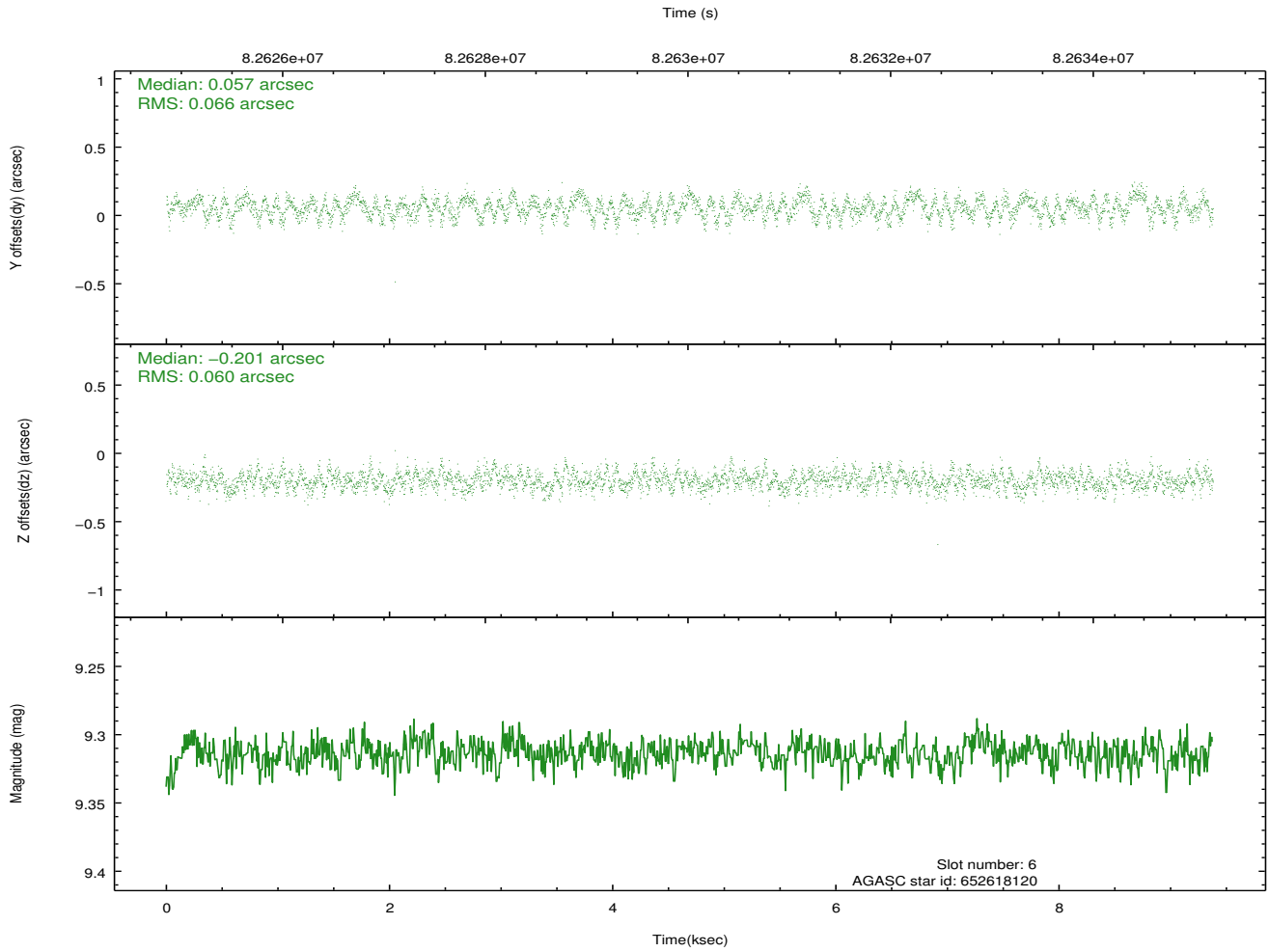
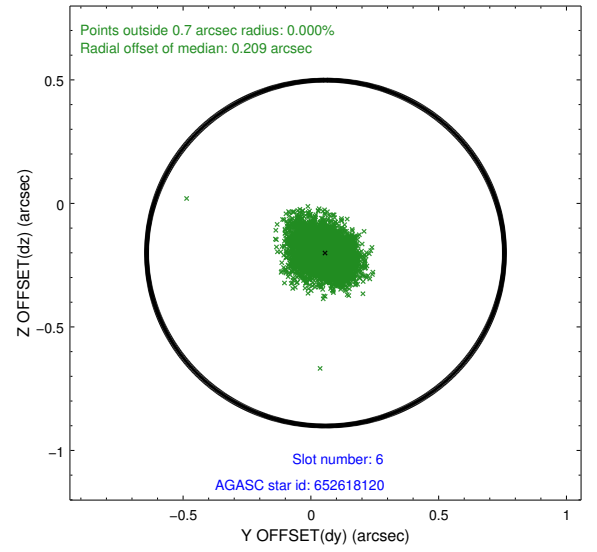
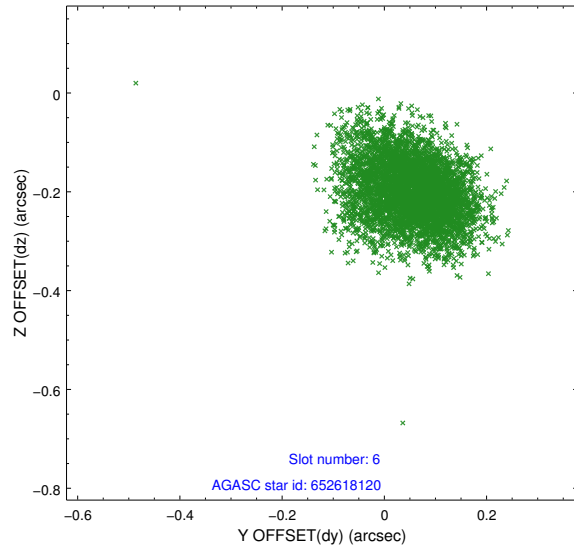
2.4.2 Slot 4



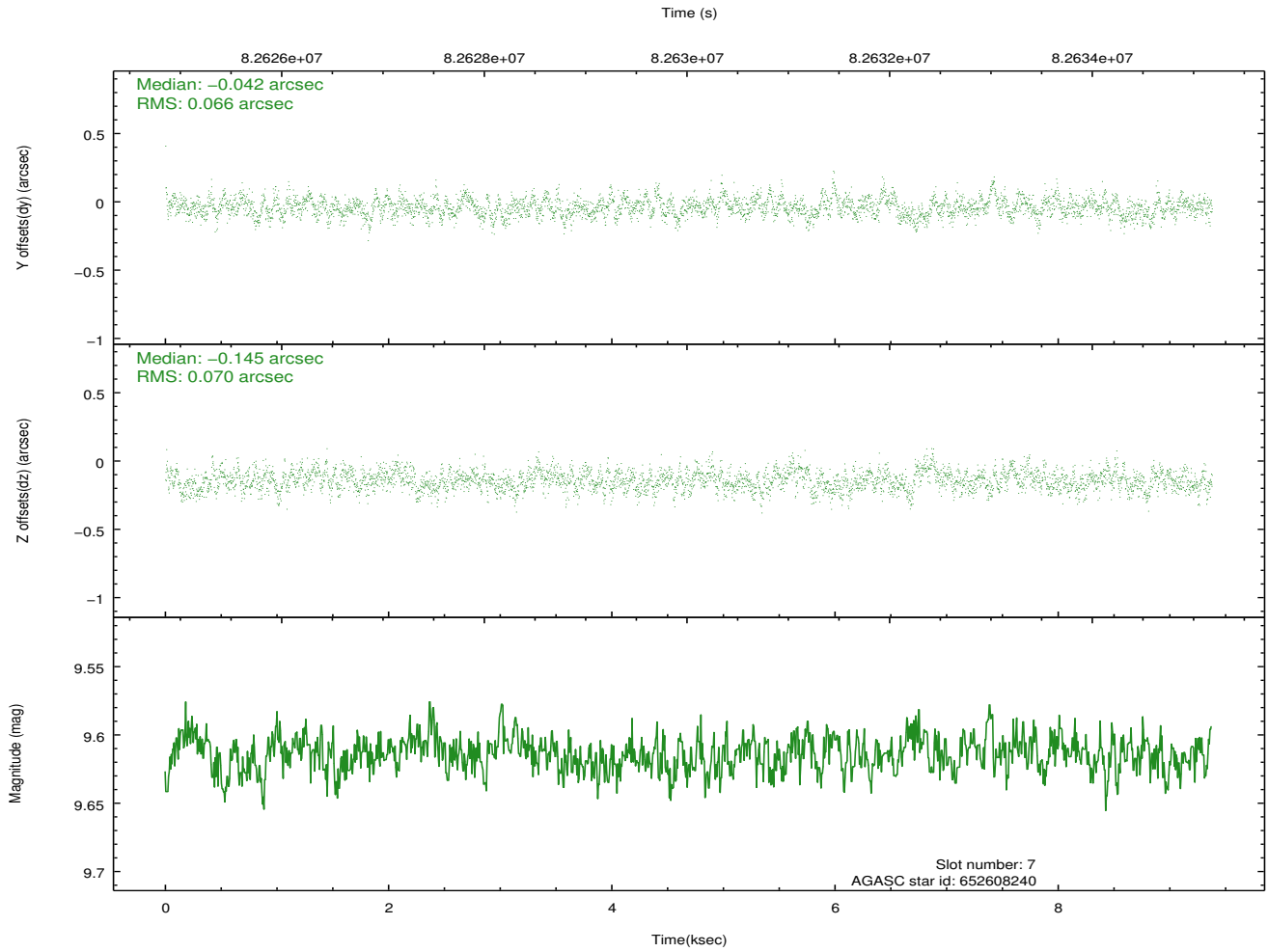
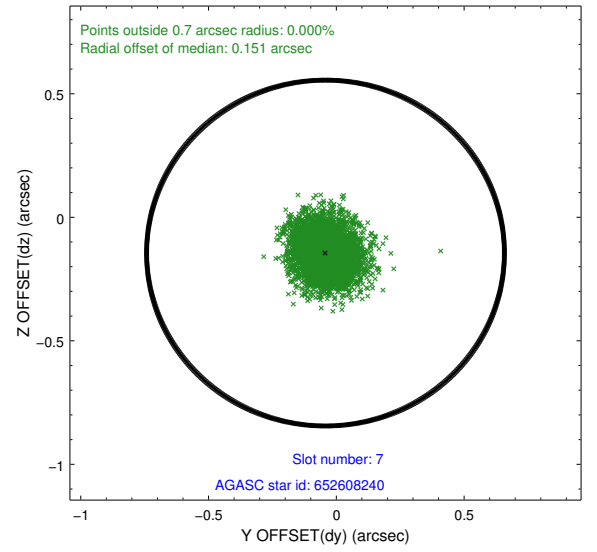
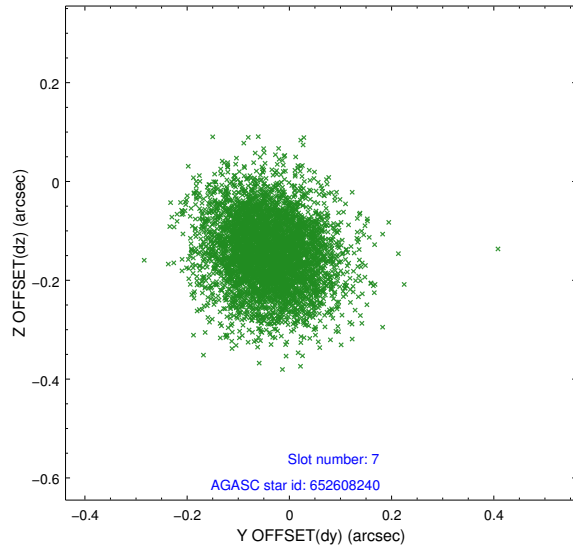
2.4.3 Slot 5



2.4.4 Slot 6

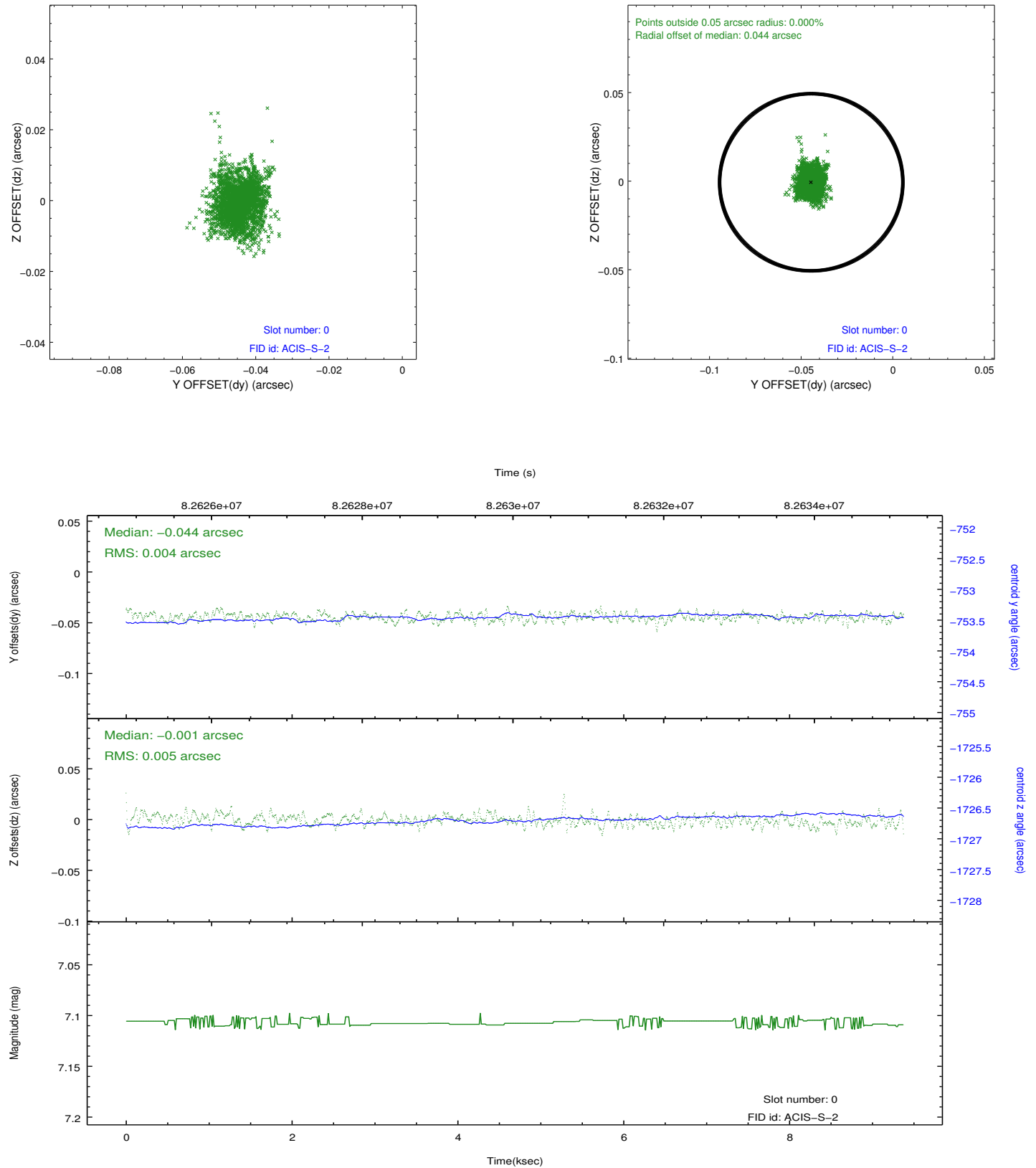


2.4.5 Slot 7

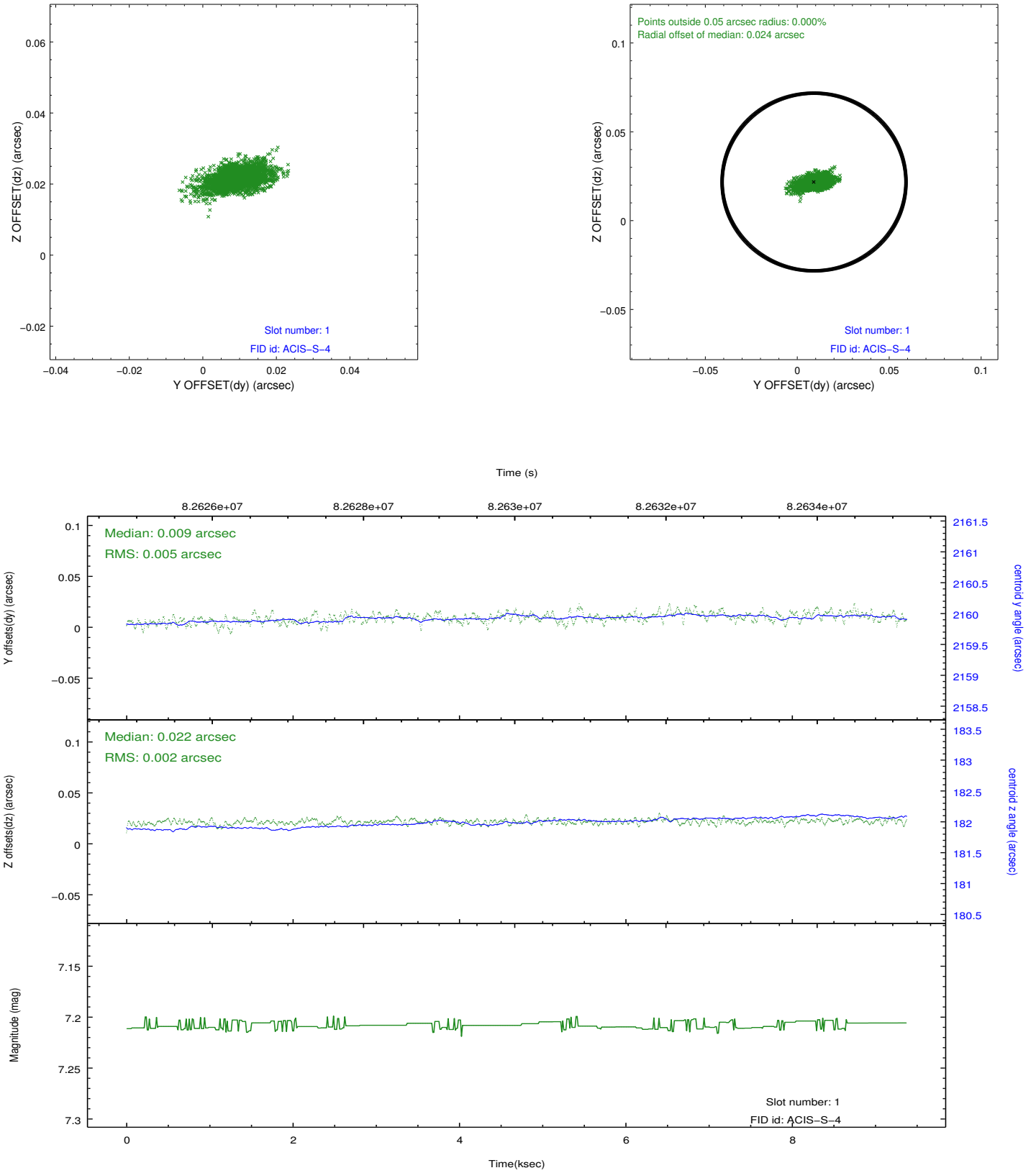


2.5 FID Slots

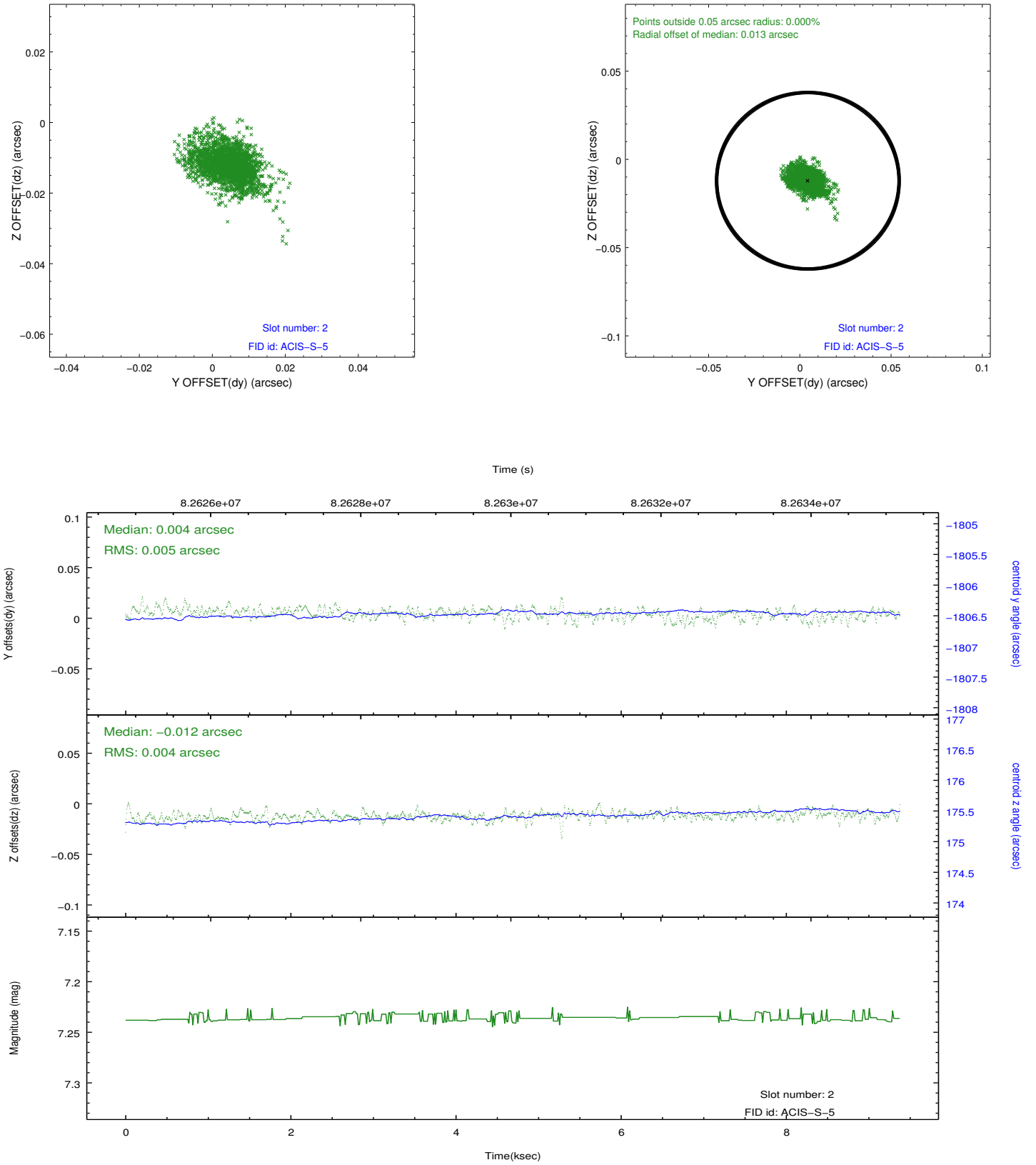
2.5.1 Slot 0



2.5.2 Slot 1



2.5.3 Slot 2



A Summary

A.1 Status

V&V Scientist	Jen Lauer
V&V Date (YYYY-MM-DD)	2012.09.06
V&V Edition	1
V&V Disposition and Status	OK
V&V Charge Time	8.953

A.2 Comments

Monitor constraint met.