

V&V Reference Report

L2 ASCDS Version : 7.6.10

Observation 2319 - L2 Version 001
Chandra X-Ray Center

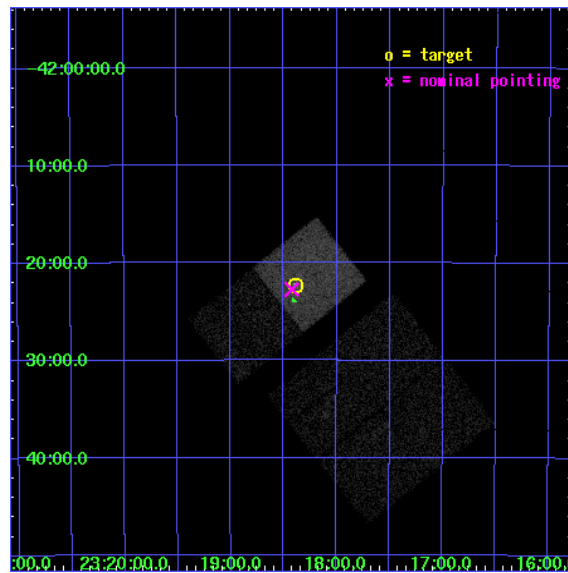
L2 Processing Date : Jun 12 2007

Contents

1	Front	2
2	OBI	3
2.1	OBI	3
2.1.1	Images	3
2.1.2	Bias	3
2.1.3	Parameters	4
2.1.4	Events	4
2.2	Compared Parameters	5
2.3	Aspect	6
2.4	Star Slots	9
2.4.1	Slot 3	9
2.4.2	Slot 4	10
2.4.3	Slot 5	11
2.4.4	Slot 6	12
2.4.5	Slot 7	13
2.5	FID Slots	14
2.5.1	Slot 0	14
2.5.2	Slot 1	15
2.5.3	Slot 2	16
3	Point Sources	17
A	Summary	18
A.1	Status	18
A.2	Comments	18

1 Front

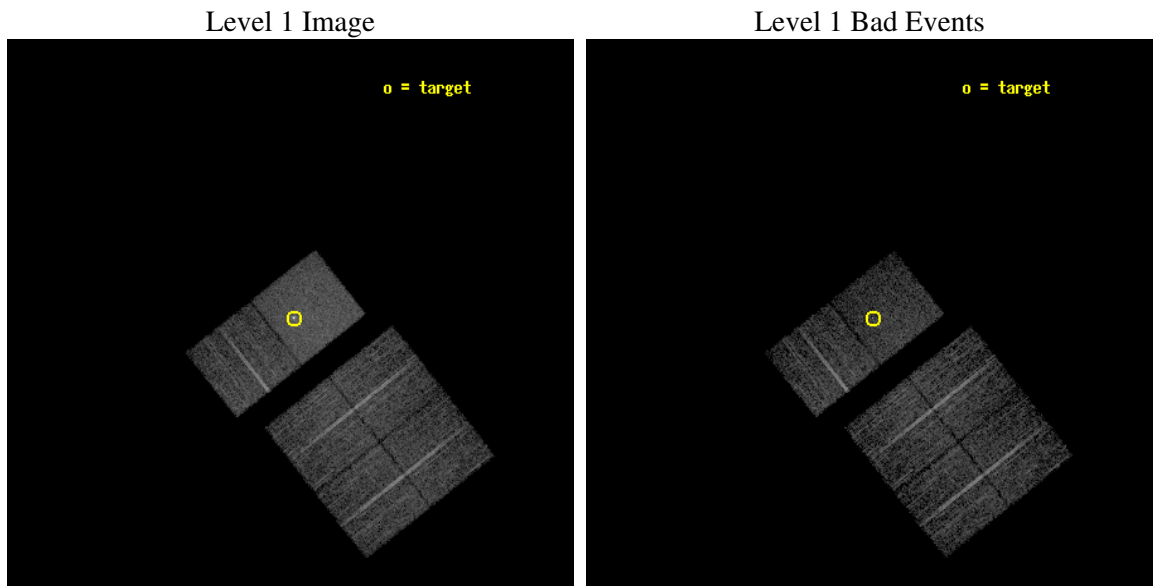
seq_num	700108
obs_id	2319
title	EXTENDED X-RAY EMISSION AROUND NEARBY SEYFERTS
observer	Dr. Stephen Murray
object	NGC 7582
dtcycle	0
cycle	P
ra_targ	349.596667
dec_targ	-42.371389
ra_nom	349.60554231257
dec_nom	-42.378792690344
roll_nom	321.66261270677
revision	2
ontime	5942.3590752184
livetime	5867.113346549
ontime0	5942.3590752184
ontime1	5939.1180850565
ontime2	5942.3590452969
ontime3	5942.3590452969
ontime6	5942.3590452969
ontime7	5942.3590752184
l2events	43796



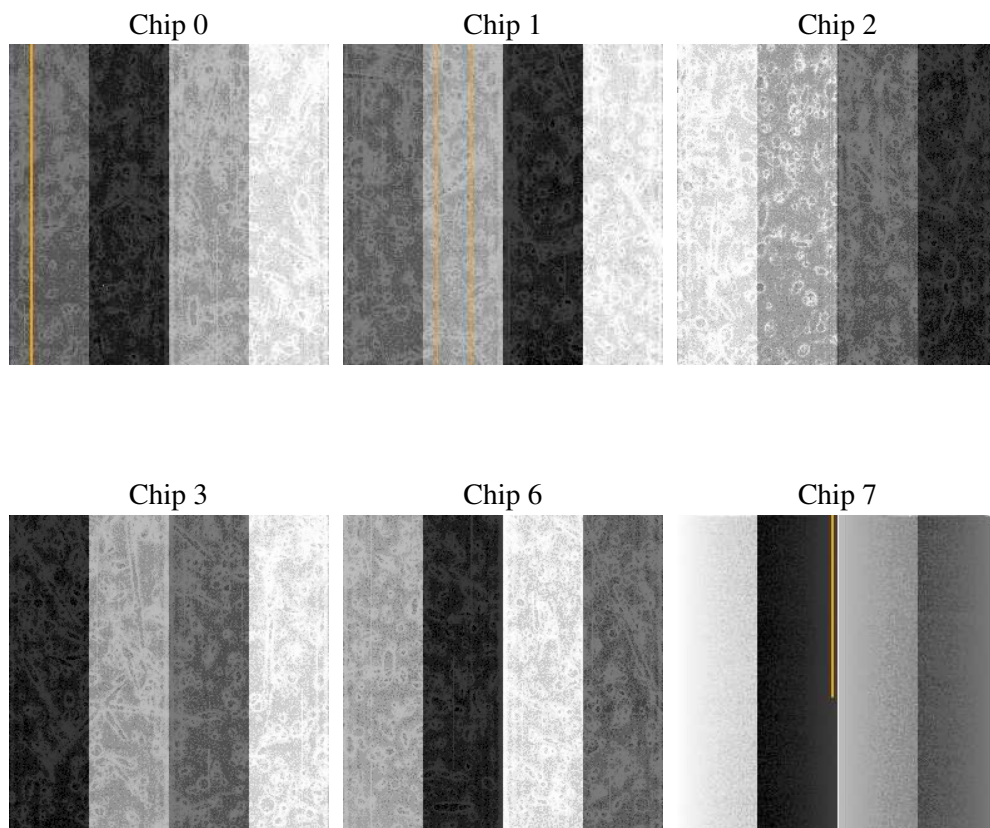
2 OBI

2.1 OBI

2.1.1 Images



2.1.2 Bias



2.1.3 Parameters

obi_num	1
ascdsver	7.6.10
caldbver	3.4.0
date	2007-06-12T09:37:58
revision	2

sched_exp_time	6000.000000
ontime	5942.3590752184
ontime0	5942.3590752184
ontime1	5939.1180850565
ontime2	5942.3590452969
ontime3	5942.3590452969
ontime6	5942.3590452969
ontime7	5942.3590752184
l1events	234670

2.1.4 Events

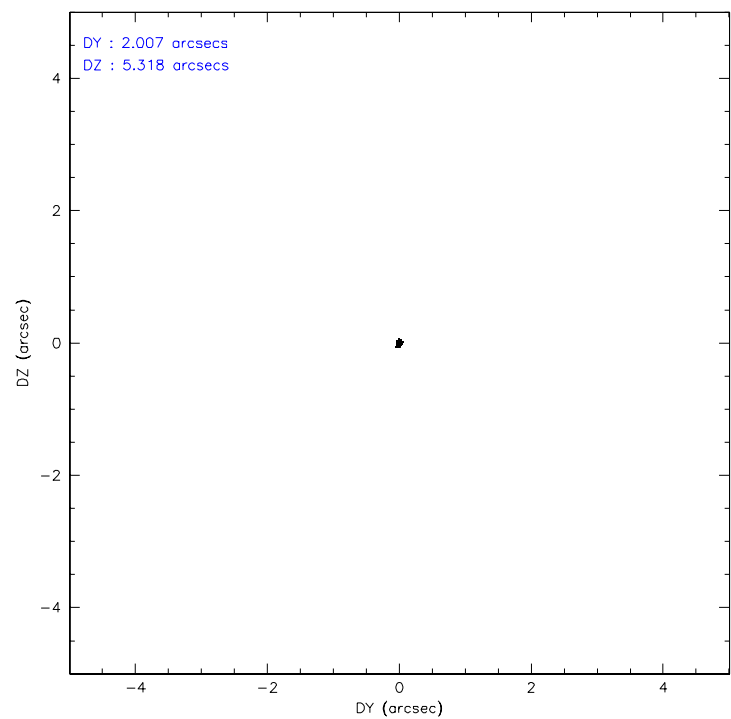
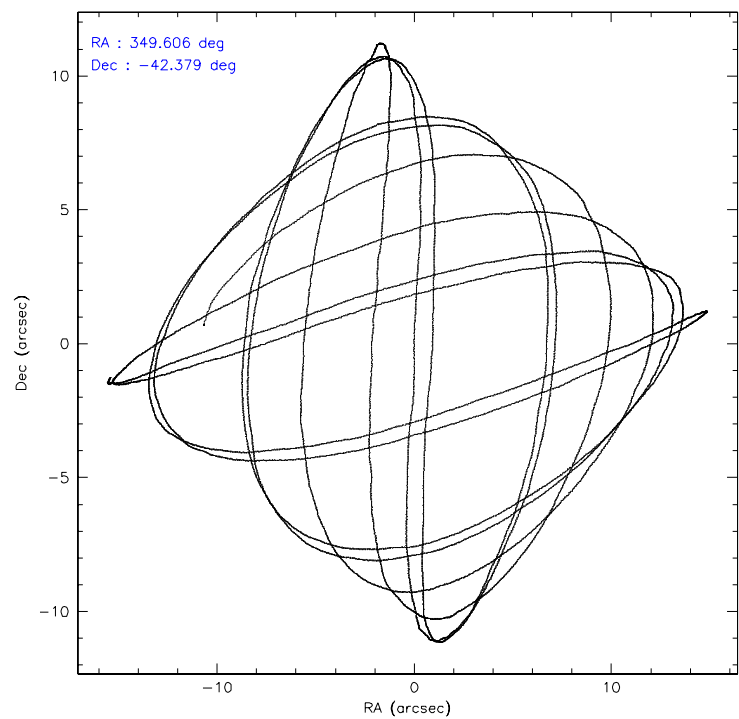
	ccd 0	ccd 1	ccd 2	ccd 3	ccd 6	ccd 7
level 1 events	35753	33137	37965	37402	37455	52958
rejected events	31457	28884	33877	33358	32910	26857
rejected %	87%	87%	89%	89%	87%	50%

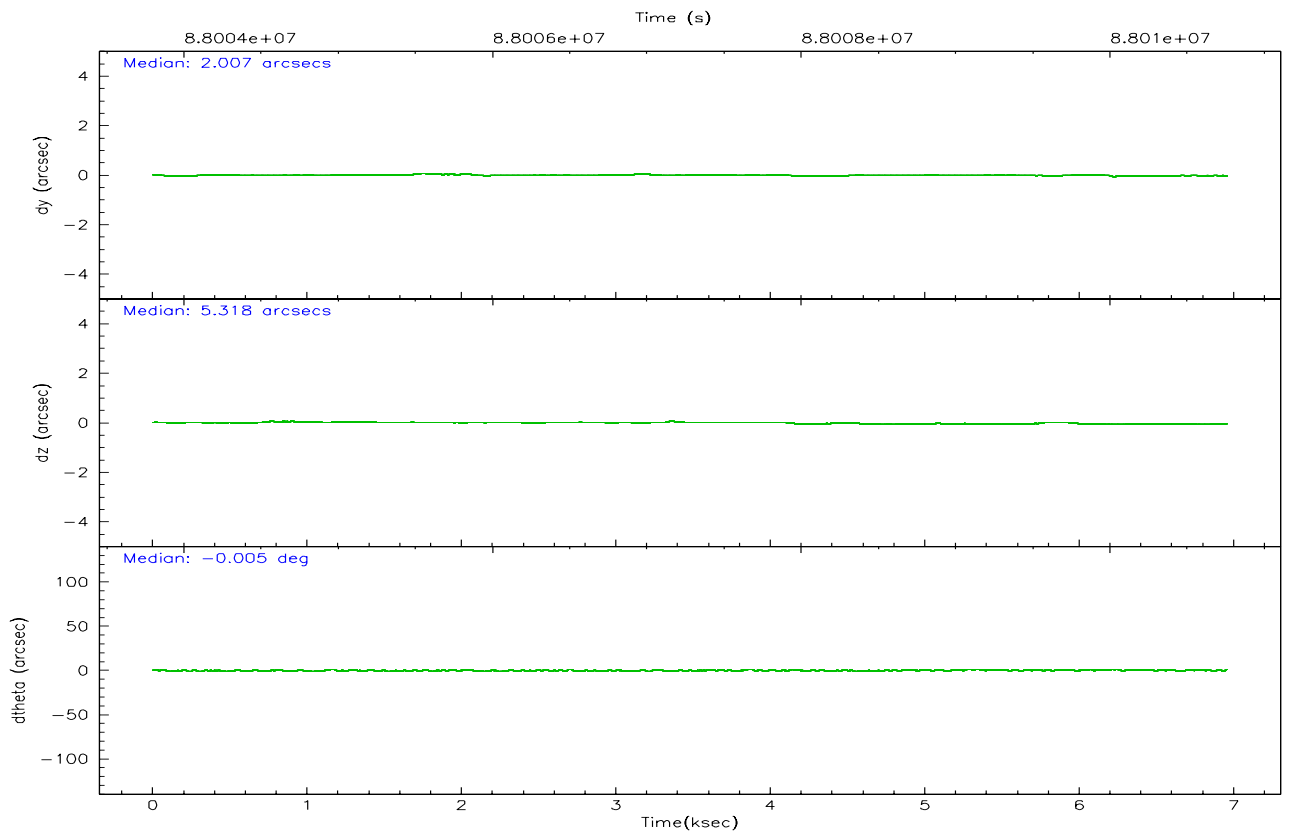
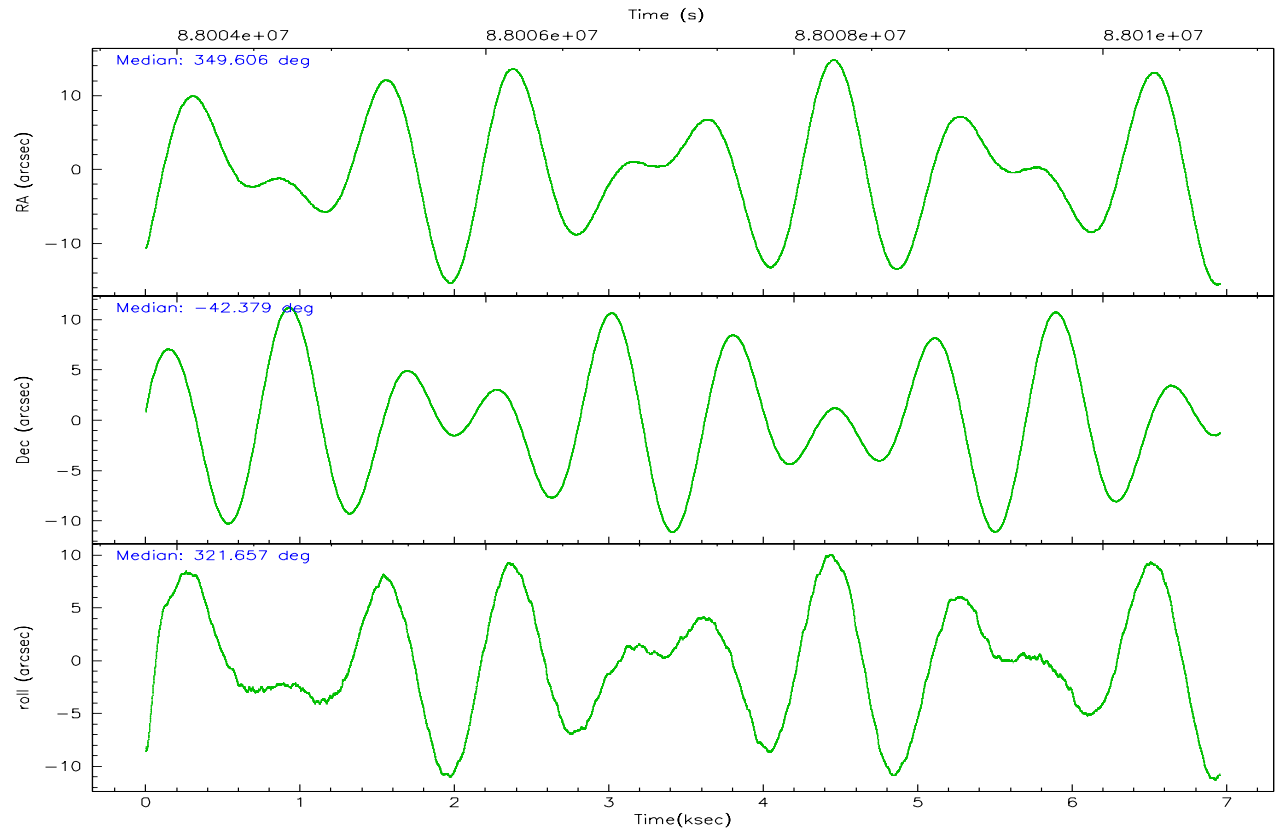
	ccd 0	ccd 1	ccd 2	ccd 3	ccd 6	ccd 7
grade 0 events	1810	1802	1853	1790	2008	3172
	5%	5%	4%	4%	5%	5%
grade 1 events	16	14	12	8	15	62
	0%	0%	0%	0%	0%	0%
grade 2 events	911	848	814	825	902	5023
	2%	2%	2%	2%	2%	9%
grade 3 events	448	450	368	383	436	2429
	1%	1%	0%	1%	1%	4%
grade 4 events	401	438	397	382	400	2332
	1%	1%	1%	1%	1%	4%
grade 5 events	1320	1415	1226	1382	1465	4448
	3%	4%	3%	3%	3%	8%
grade 6 events	730	723	659	670	805	13183
	2%	2%	1%	1%	2%	24%
grade 7 events	30117	27447	32636	31962	31424	22309
	84%	82%	85%	85%	83%	42%

2.2 Compared Parameters

Parameter	Planned	Actual	Parameter	Planned	Actual
Instrument	ACIS	ACIS	Obspar format version number	6	6
Detector	ACIS-012367	ACIS-012367	Obspar file type	PREDICTED	ACTUAL
Grating	NONE	NONE	Obspar update status	NONE	UPDATED
Data mode	VFAINT	VFAINT	Number of optional ACIS chips dropped	0	0
Observation mode	POINTING	POINTING	On-chip summing requested	N	N
Pointing RA	349.568806	349.6055423125741	Subarray requested	NONE	NONE
Pointing Dec	-42.375031	-42.37879269034374	Alternating exposures requested	N	N
Pointing Roll	321.481220	321.6626127067679	Primary exposure time	0.000000	3.2
SIM focus pos (mm)	-0.684267	-0.6828225247311905			
SIM defocus (mm)	0	0.001444936568705701			
SIM translation stage pos (mm)	-190.132523	-190.1400660498719			
SIM translation stage offset (mm)	0	0.00754346686406393			
Observation start time	88004759.184000	88003415.721552			
Observation start date	2000-10-15T13:44:55	2000-10-15T13:23:35			
Observation end time	88010759.184000	88011553.196859			
Observation end date	2000-10-15T15:24:55	2000-10-15T15:39:13			
Read mode	TIMED	TIMED			

2.3 Aspect



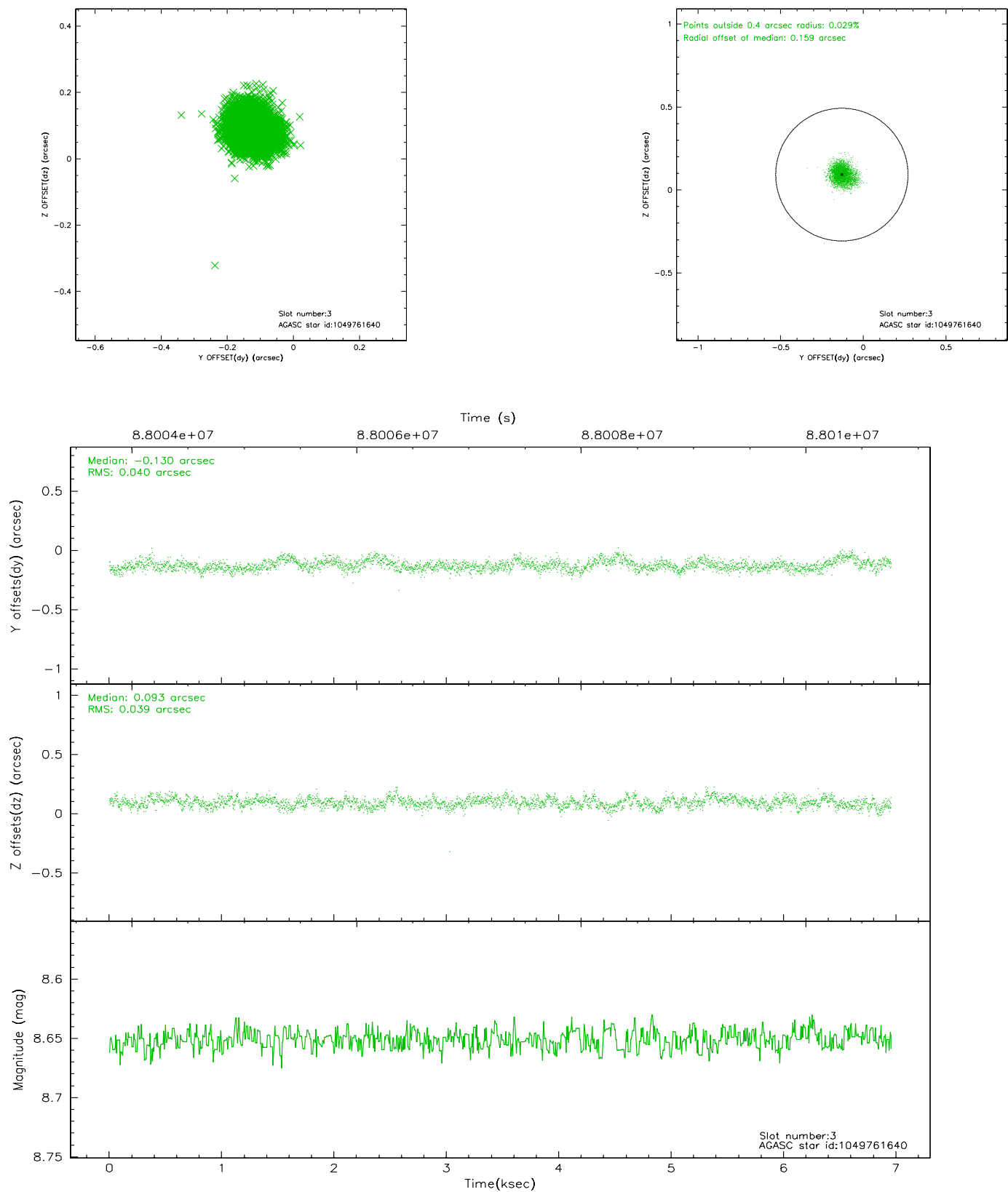


Slot Statistics

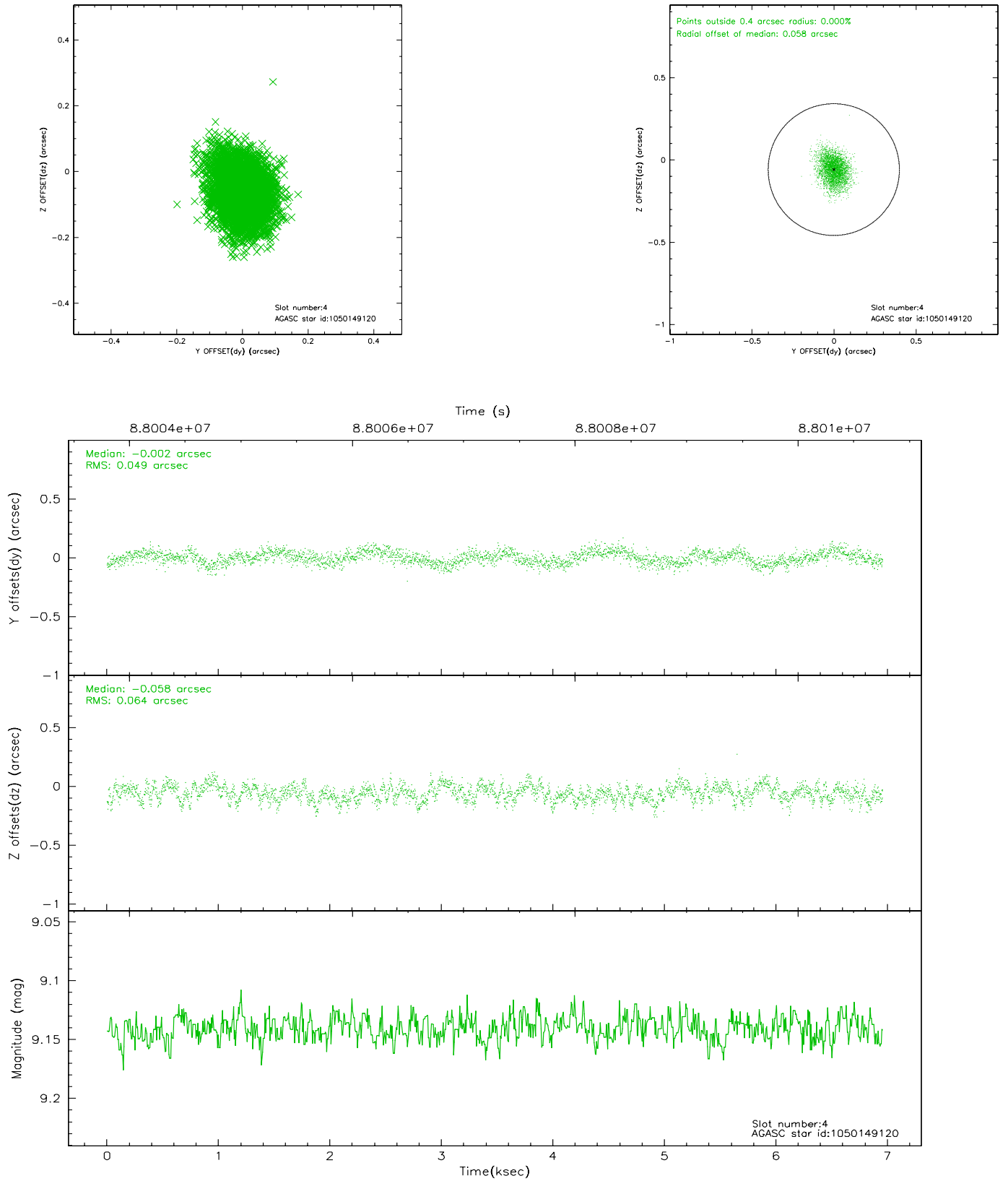
slot	status	id	mag	n_pts	med_dy	med_dz	dr1	dr2	ra	dec	mean_y	mean_z
0	FID	ACIS-S-3	7.36	1695	-0.074	-0.005	0.007	0.012	0.000000	0.000000	58.53	-1855.50
1	FID	ACIS-S-4	7.21	1695	-0.027	0.042	0.005	0.009	0.000000	0.000000	2158.73	181.18
2	FID	ACIS-S-5	7.24	1695	0.073	-0.027	0.006	0.010	0.000000	0.000000	-1806.32	175.77
3	GUIDE	1049761640	8.65	3391	-0.130	0.093	0.060	0.096	349.142415	-42.207499	-1264.68	-238.62
4	GUIDE	1050149120	9.14	3390	-0.002	-0.058	0.086	0.141	348.946168	-42.587694	-812.00	-1631.84
5	GUIDE	1050158072	9.11	3391	-0.071	-0.055	0.106	0.165	348.738453	-42.733577	-908.61	-2386.48
6	GUIDE	1050149848	10.20	3388	0.029	-0.123	0.173	0.274	349.007658	-42.828628	-140.32	-2205.11
7	GUIDE	1051067360	10.07	3387	0.168	0.150	0.121	0.196	350.420093	-42.504159	2063.13	1034.05

2.4 Star Slots

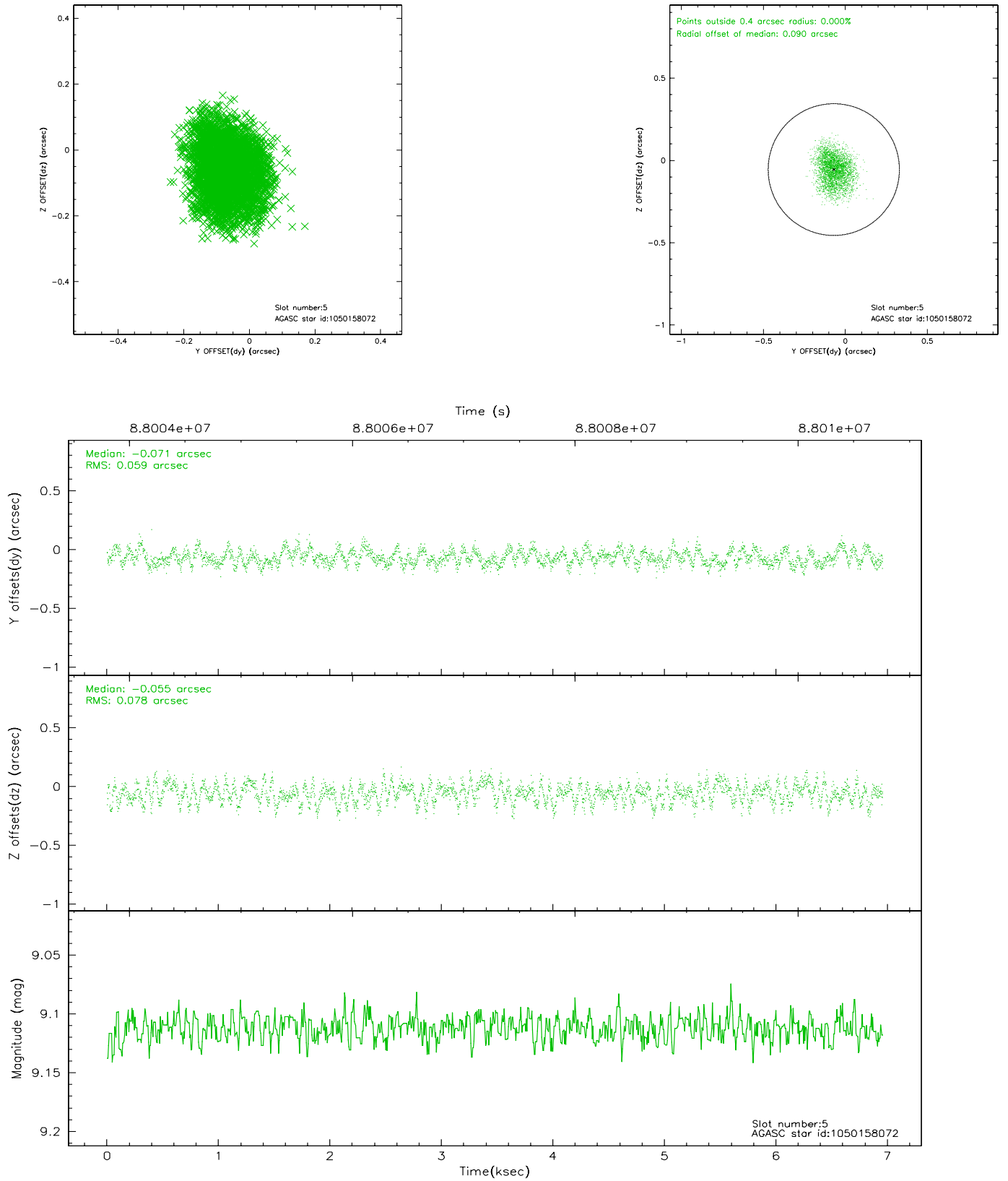
2.4.1 Slot 3



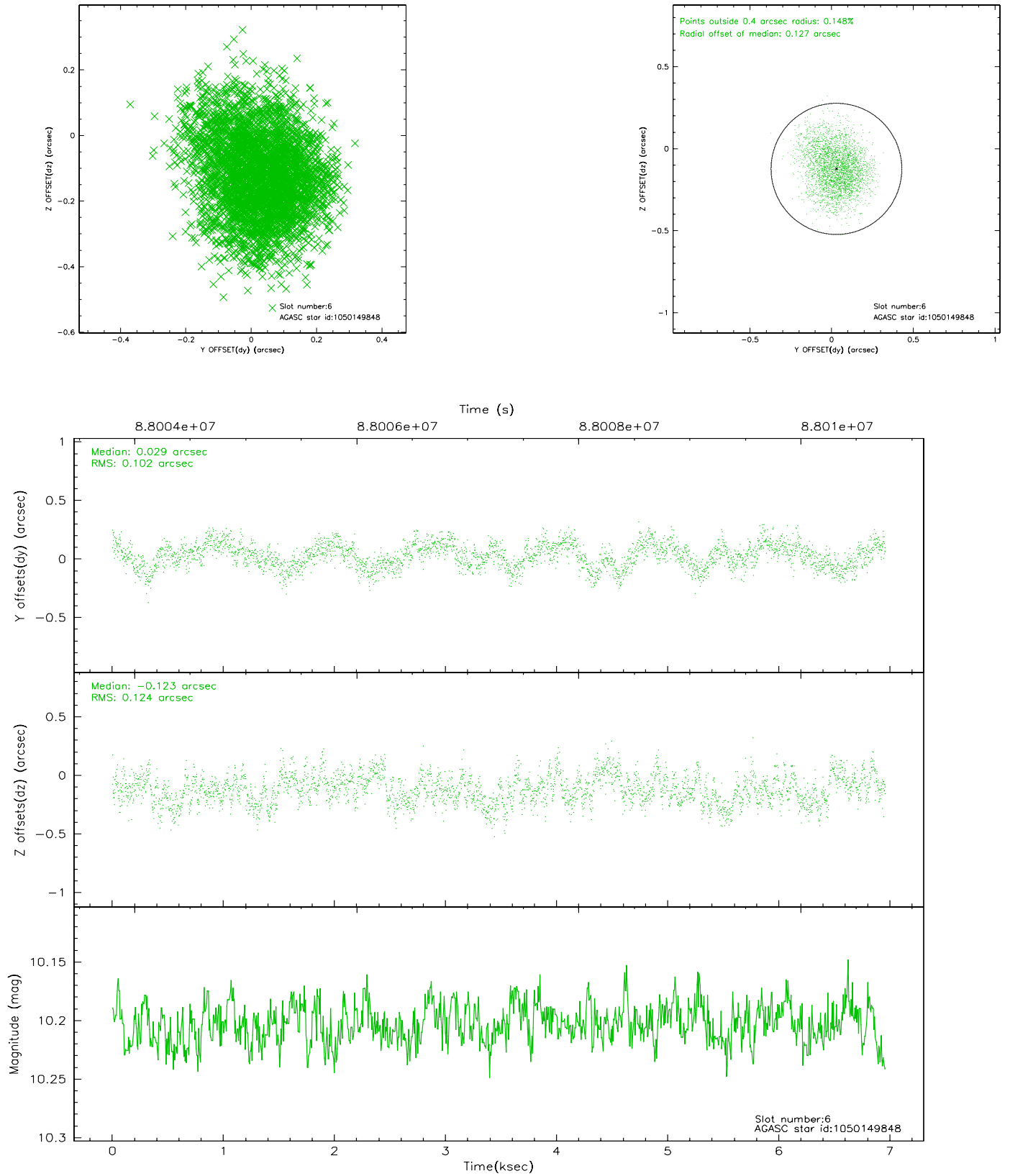
2.4.2 Slot 4



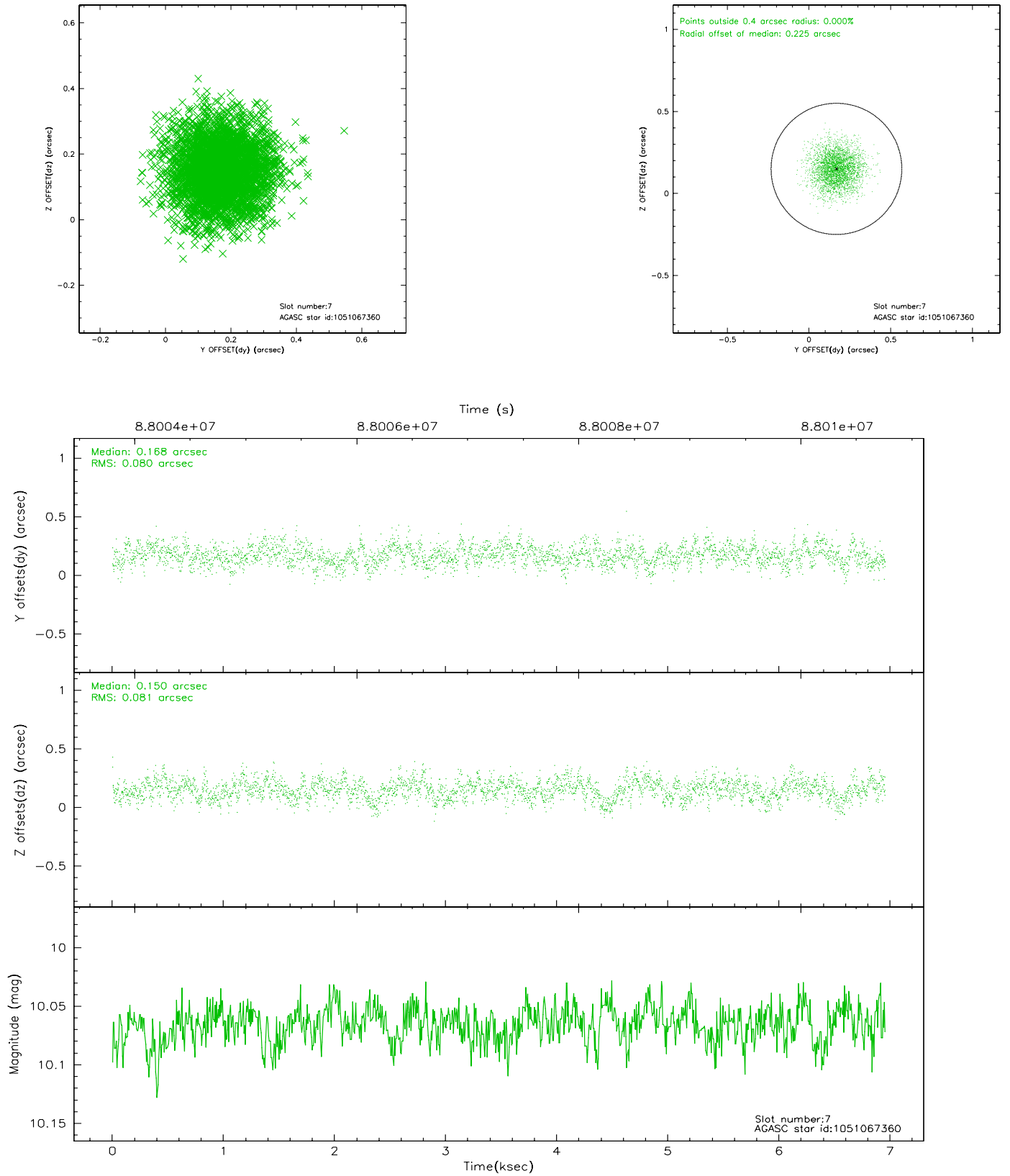
2.4.3 Slot 5



2.4.4 Slot 6

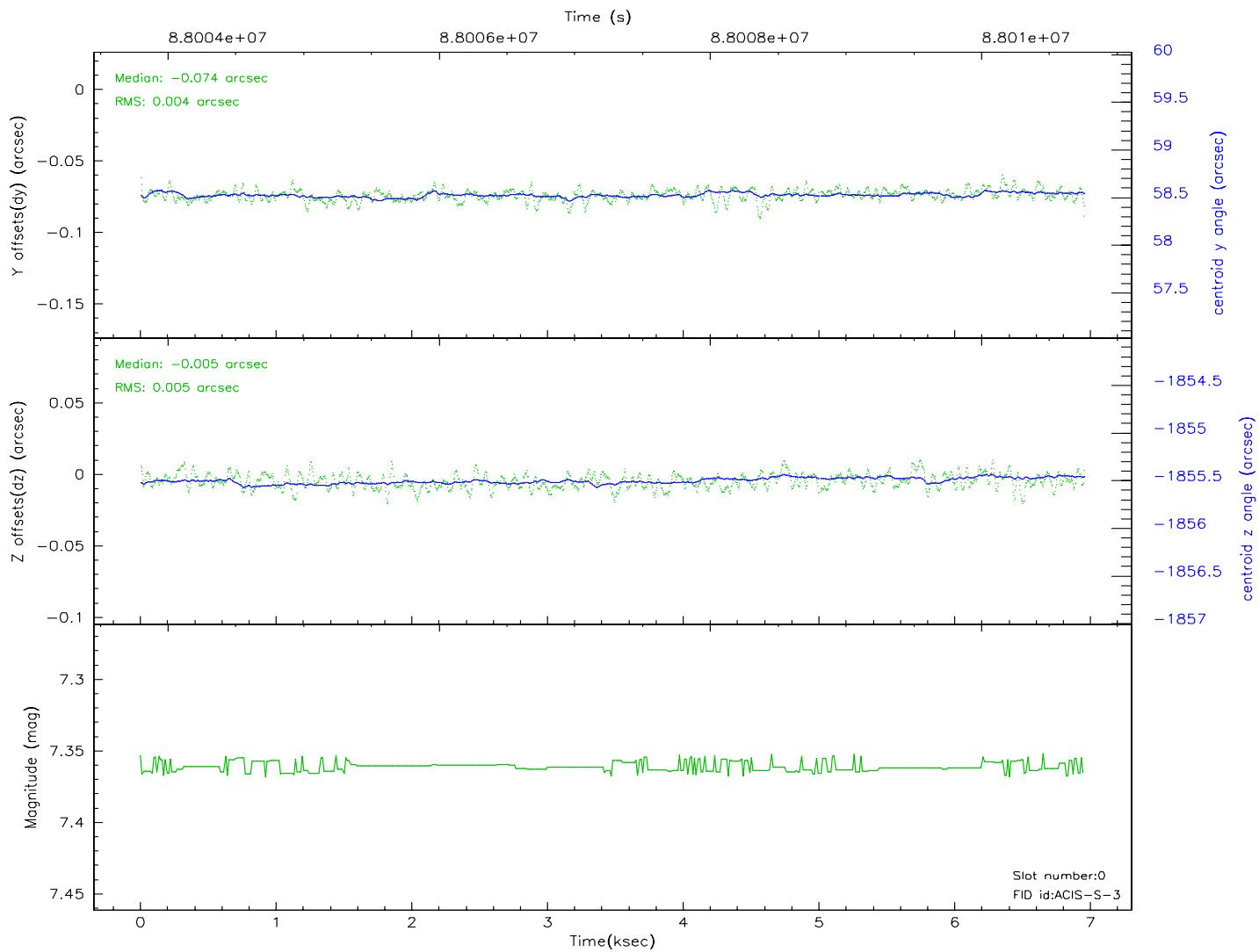
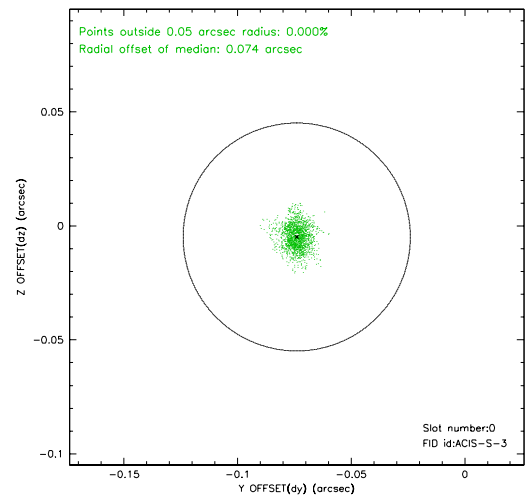
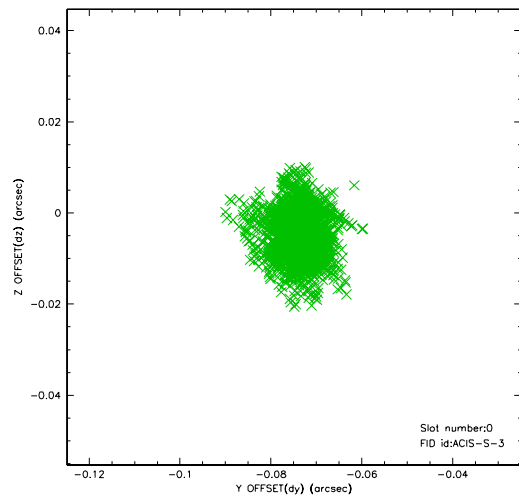


2.4.5 Slot 7

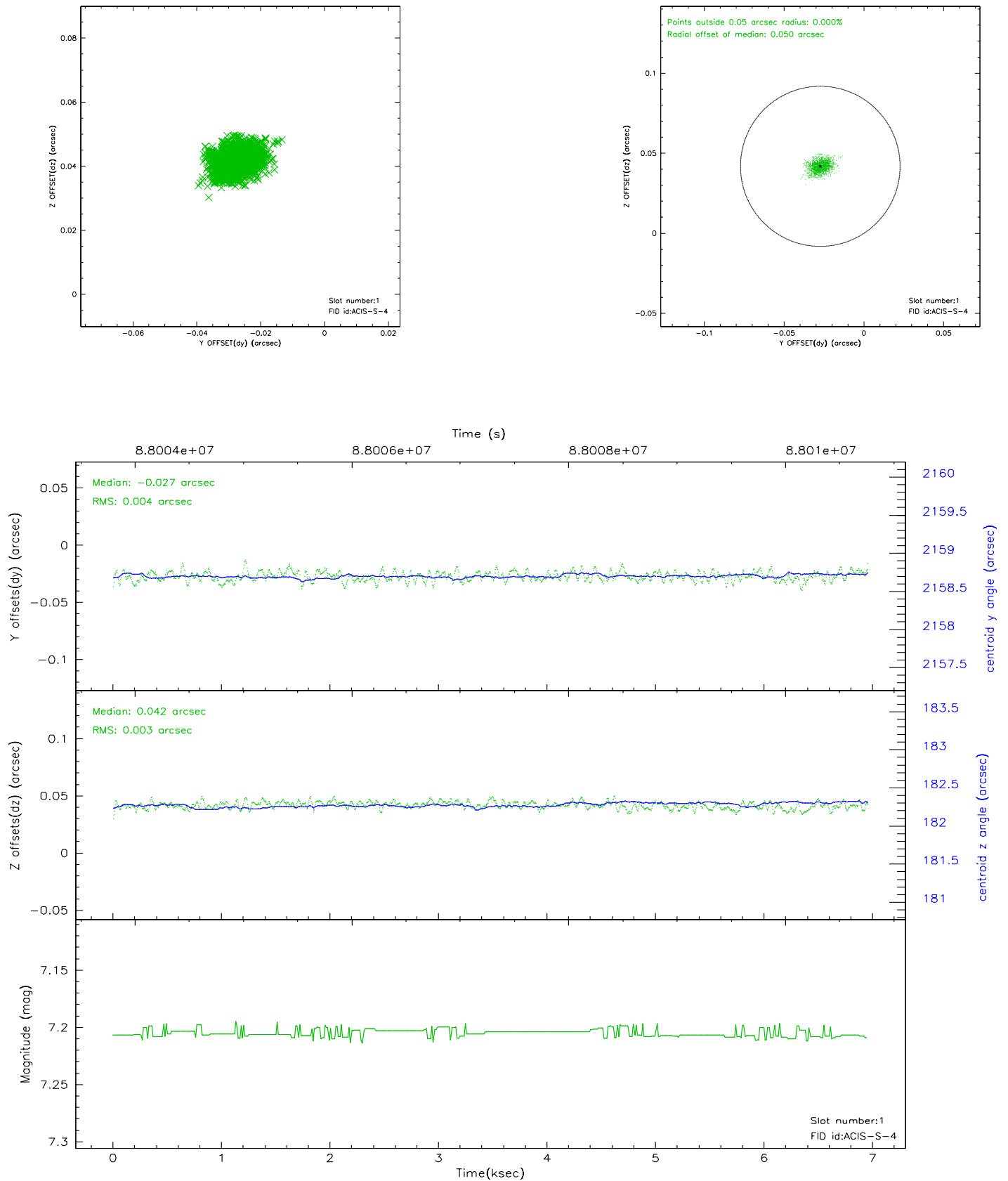


2.5 FID Slots

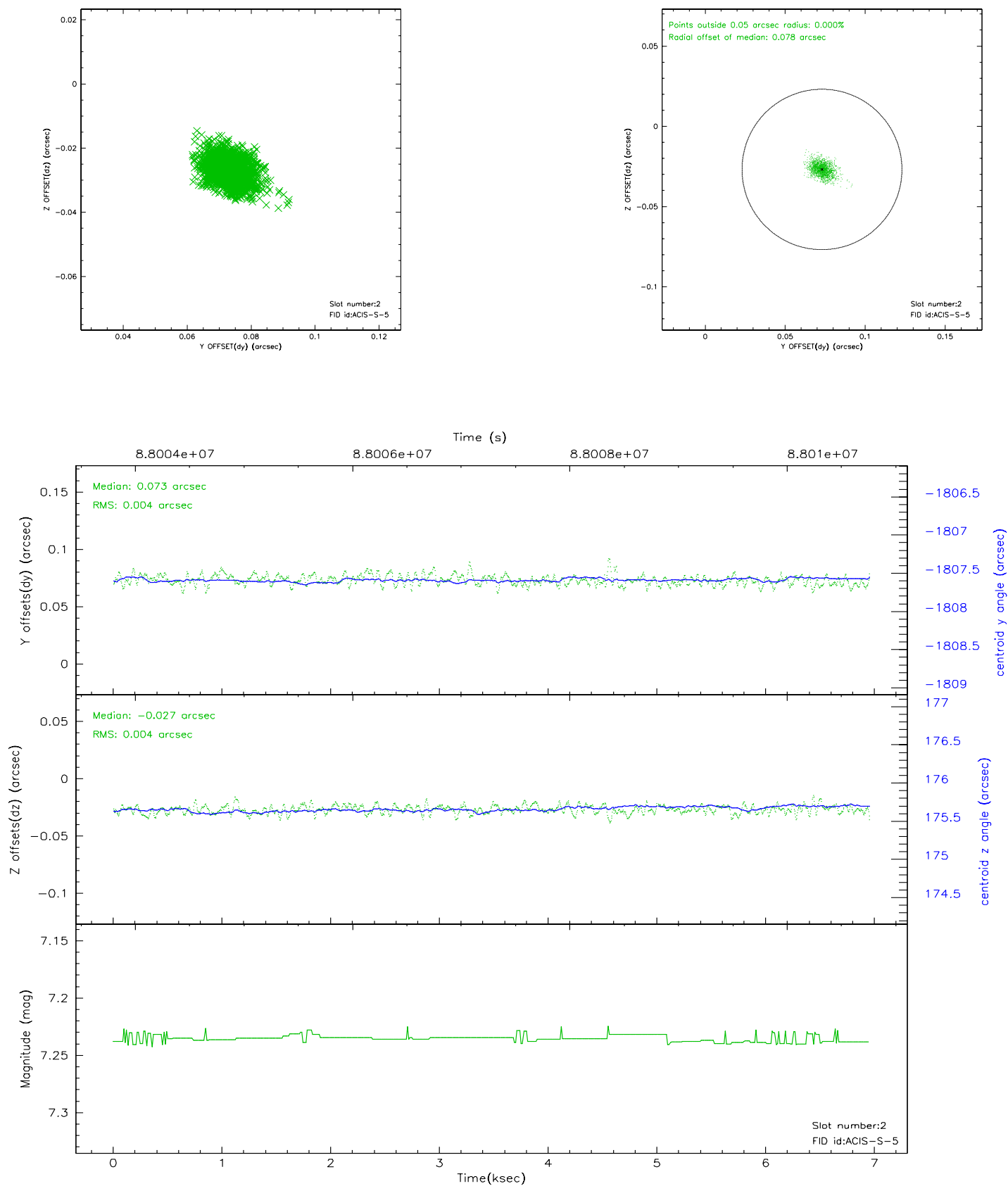
2.5.1 Slot 0



2.5.2 Slot 1



2.5.3 Slot 2



3 Point Sources

A Summary

A.1 Status

V&V Scientist	Jen Lauer
V&V Date (YYYY-MM-DD)	2007.06.12
V&V Edition	1
V&V Disposition and Status	OK
V&V Charge Time	5.945

A.2 Comments

Roll constraint met.