

V&V Reference Report

L2 ASCDS Version : 7.6.10

Observation 1802 - L2 Version 001
Chandra X-Ray Center

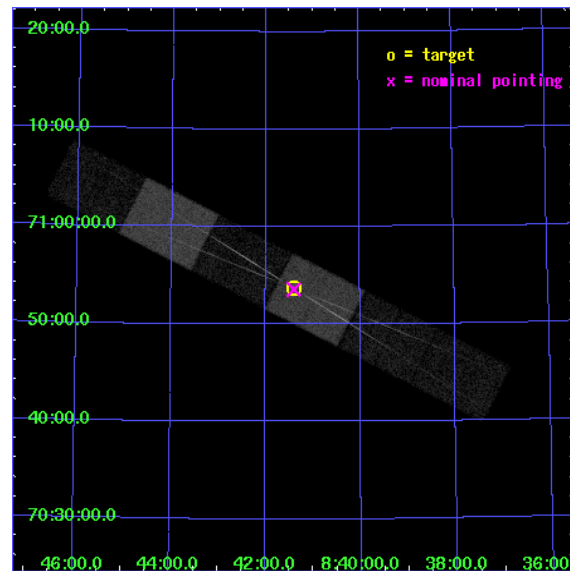
L2 Processing Date : Jun 5 2007

Contents

1	Front	2
2	OBI	3
2.1	OBI	3
2.1.1	Images	3
2.1.2	Bias	3
2.1.3	Parameters	4
2.1.4	Events	4
2.2	Compared Parameters	5
2.3	Aspect	6
2.4	Star Slots	9
2.4.1	Slot 3	9
2.4.2	Slot 4	10
2.4.3	Slot 5	11
2.4.4	Slot 6	12
2.4.5	Slot 7	13
2.5	FID Slots	14
2.5.1	Slot 0	14
2.5.2	Slot 1	15
2.5.3	Slot 2	16
3	Gratings	17
3.1	HEG Arm	17
3.2	MEG Arm	19
A	Summary	21
A.1	Status	21
A.2	Comments	21

1 Front

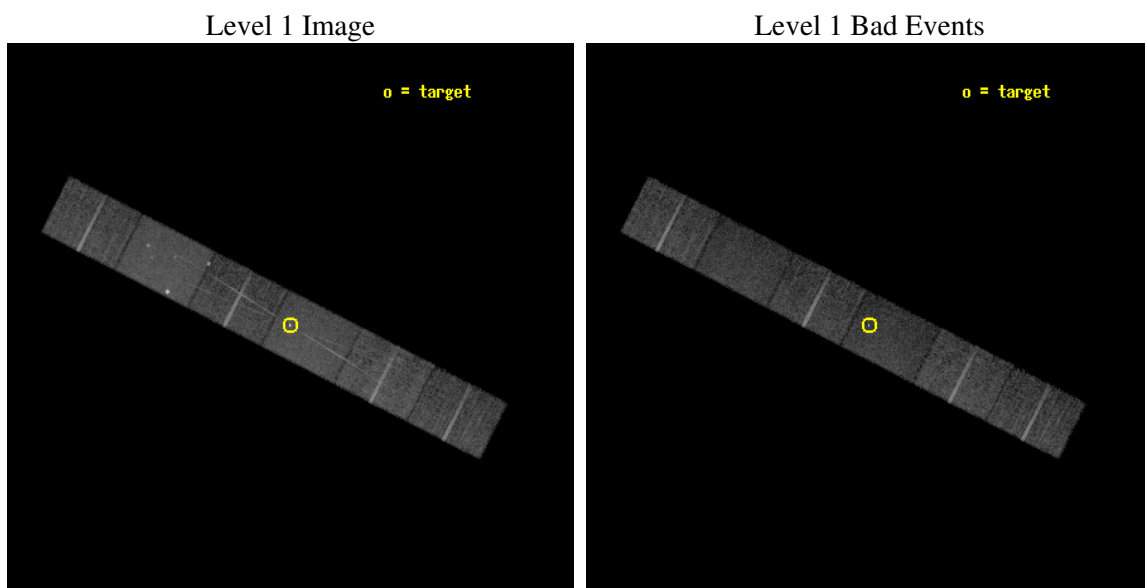
seq_num	700006
obs_id	1802
title	HETG OBSERVATIONS OF VARIOUS ACTIVE GALACTIC NUCLEI
observer	Prof. Claude Canizares
object	Q0836+7104
dtcycle	0
cycle	P
ra_targ	130.35125
dec_targ	70.895
ra_nom	130.35028822017
dec_nom	70.89282863834
roll_nom	27.064267002788
revision	2
ontime	14152.5
livetime	13923.924849668
ontime4	14152.5
ontime5	14152.5
ontime6	14152.5
ontime7	14152.5
ontime8	14152.5
ontime9	14152.5
l2events	108957



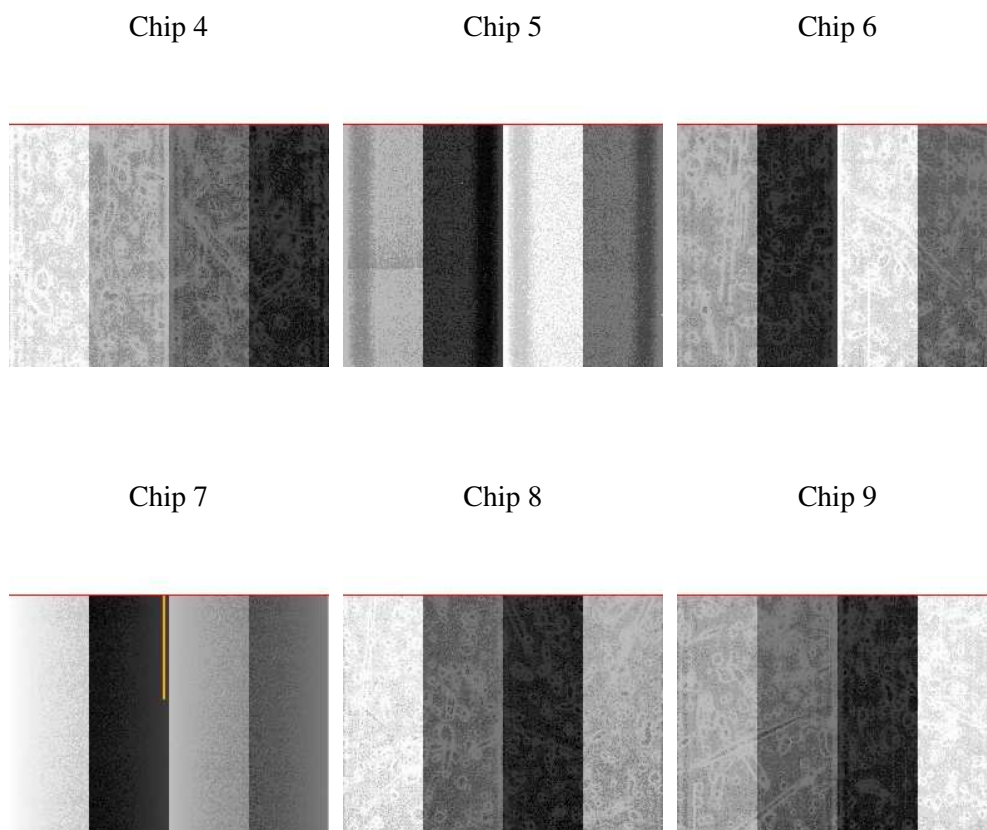
2 OBI

2.1 OBI

2.1.1 Images



2.1.2 Bias



2.1.3 Parameters

obi_num	0
ascdsver	7.6.10
caldsver	3.4.0
date	2007-06-05T08:52:57
revision	2

sched_exp_time	14000.000000
ontime	14152.5
ontime4	14152.5
ontime5	14152.5
ontime6	14152.5
ontime7	14152.5
ontime8	14152.5
ontime9	14152.5
l1events	471461

2.1.4 Events

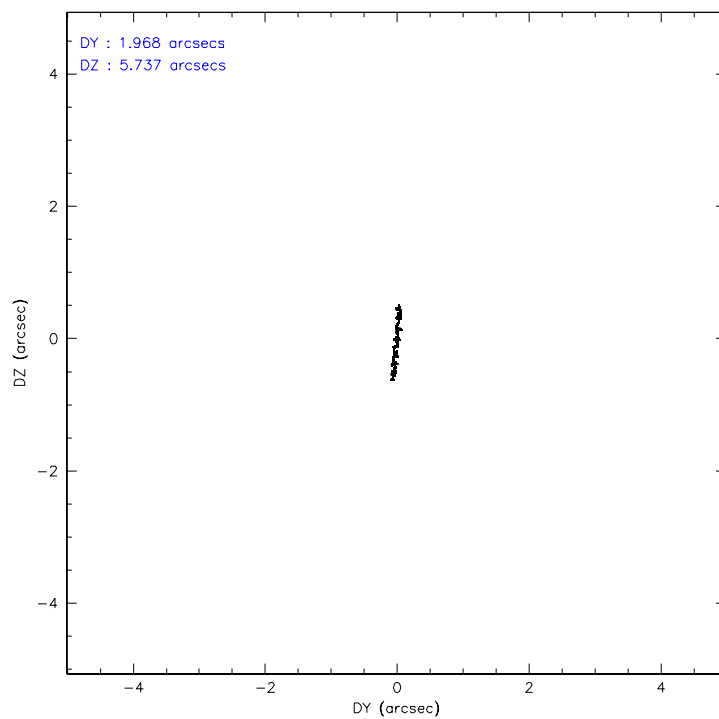
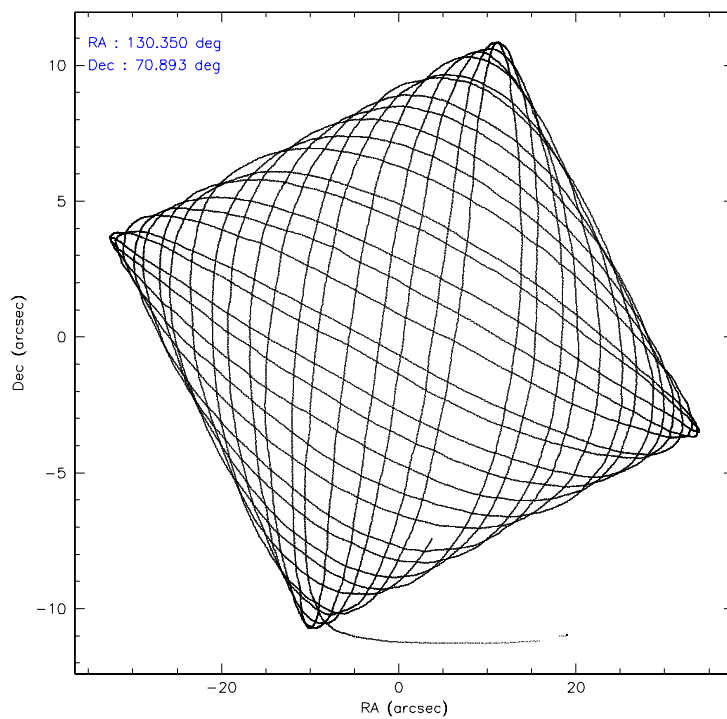
	ccd 4	ccd 5	ccd 6	ccd 7	ccd 8	ccd 9
level 1 events	70980	91385	68168	87625	87199	66104
rejected events	63168	46633	57530	47368	69406	58421
rejected %	88%	51%	84%	54%	79%	88%

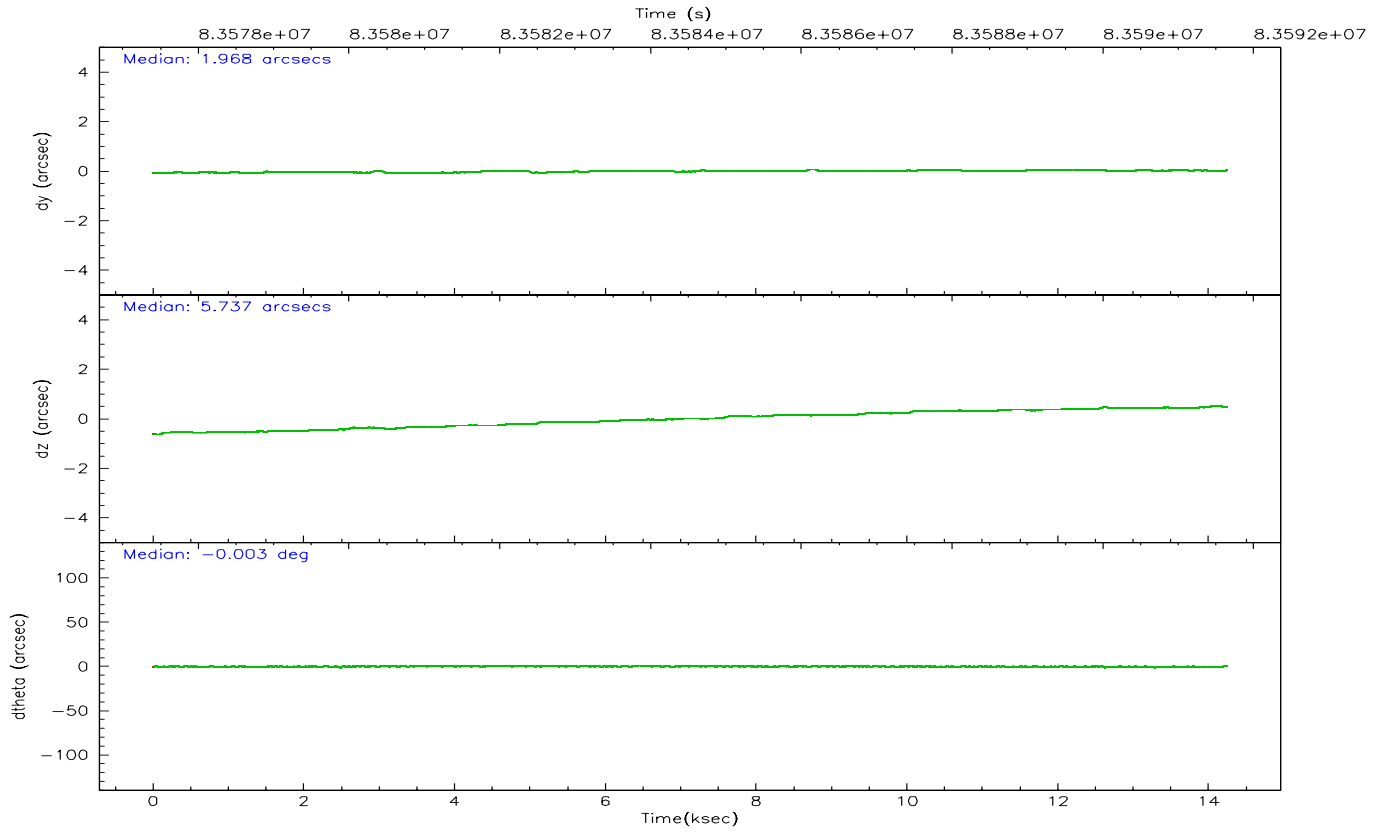
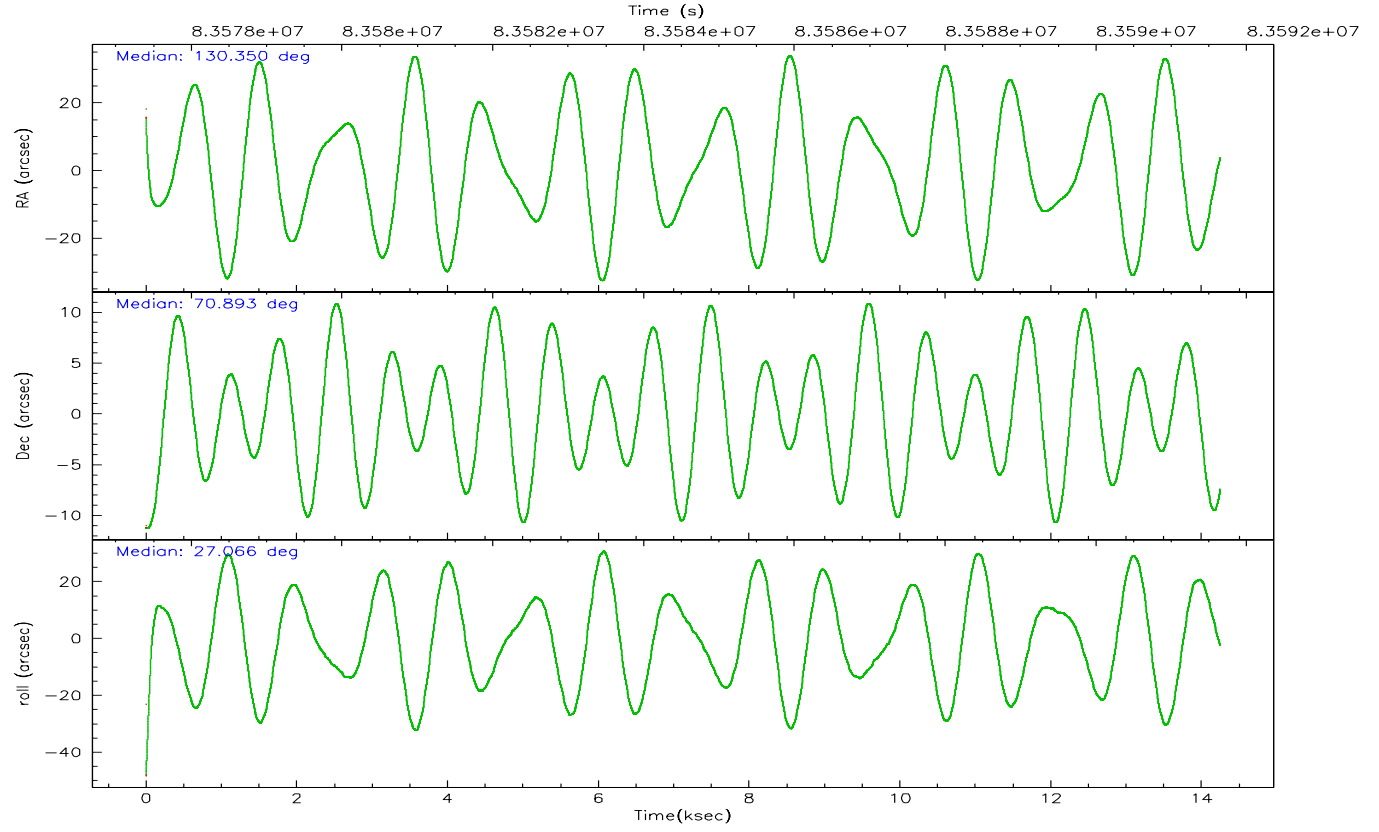
	ccd 4	ccd 5	ccd 6	ccd 7	ccd 8	ccd 9
grade 0 events	3205	8167	5445	4320	6296	3183
	4%	8%	7%	4%	7%	4%
grade 1 events	23	176	40	131	47	26
	0%	0%	0%	0%	0%	0%
grade 2 events	1763	11527	1845	8275	3601	1441
	2%	12%	2%	9%	4%	2%
grade 3 events	785	2198	947	3804	1782	825
	1%	2%	1%	4%	2%	1%
grade 4 events	783	2095	898	3852	1690	779
	1%	2%	1%	4%	1%	1%
grade 5 events	2156	6892	2492	7972	3347	2612
	3%	7%	3%	9%	3%	3%
grade 6 events	1278	20782	1505	20018	4428	1460
	1%	22%	2%	22%	5%	2%
grade 7 events	60987	39548	54996	39253	66008	55778
	85%	43%	80%	44%	75%	84%

2.2 Compared Parameters

Parameter	Planned	Actual	Parameter	Planned	Actual
Instrument	ACIS	ACIS	Obspar format version number	6	6
Detector	ACIS-456789	ACIS-456789	Obspar file type	PREDICTED	ACTUAL
Grating	HETG	HETG	Obspar update status	NONE	UPDATED
Data mode	FAINT	FAINT	Number of optional ACIS chips dropped	0	0
Observation mode	POINTING	POINTING	On-chip summing requested	N	N
Pointing RA	130.305324	130.3502882201665	Subarray requested	CUSTOM	CUSTOM
Pointing Dec	70.869796	70.89282863833955	Subarray start row	1	1
Pointing Roll	26.950158	27.06426700278769	Subarray row count	774	774
SIM focus pos (mm)	-0.684267	-0.6828225247311905	Alternating exposures requested	N	N
SIM defocus (mm)	0	0.001444936568705701	Primary exposure time	3.200000	2.5
SIM translation stage pos (mm)	-187.132523	-187.1254020033014			
SIM translation stage offset (mm)	-3	-3.007120579706367			
Observation start time	83577650.184000	83576640.42993601			
Observation start date	2000-08-25T07:59:46	2000-08-25T07:44:00			
Observation end time	83591650.184000	83592676.555538			
Observation end date	2000-08-25T11:53:06	2000-08-25T12:11:16			
Read mode	TIMED	TIMED			

2.3 Aspect



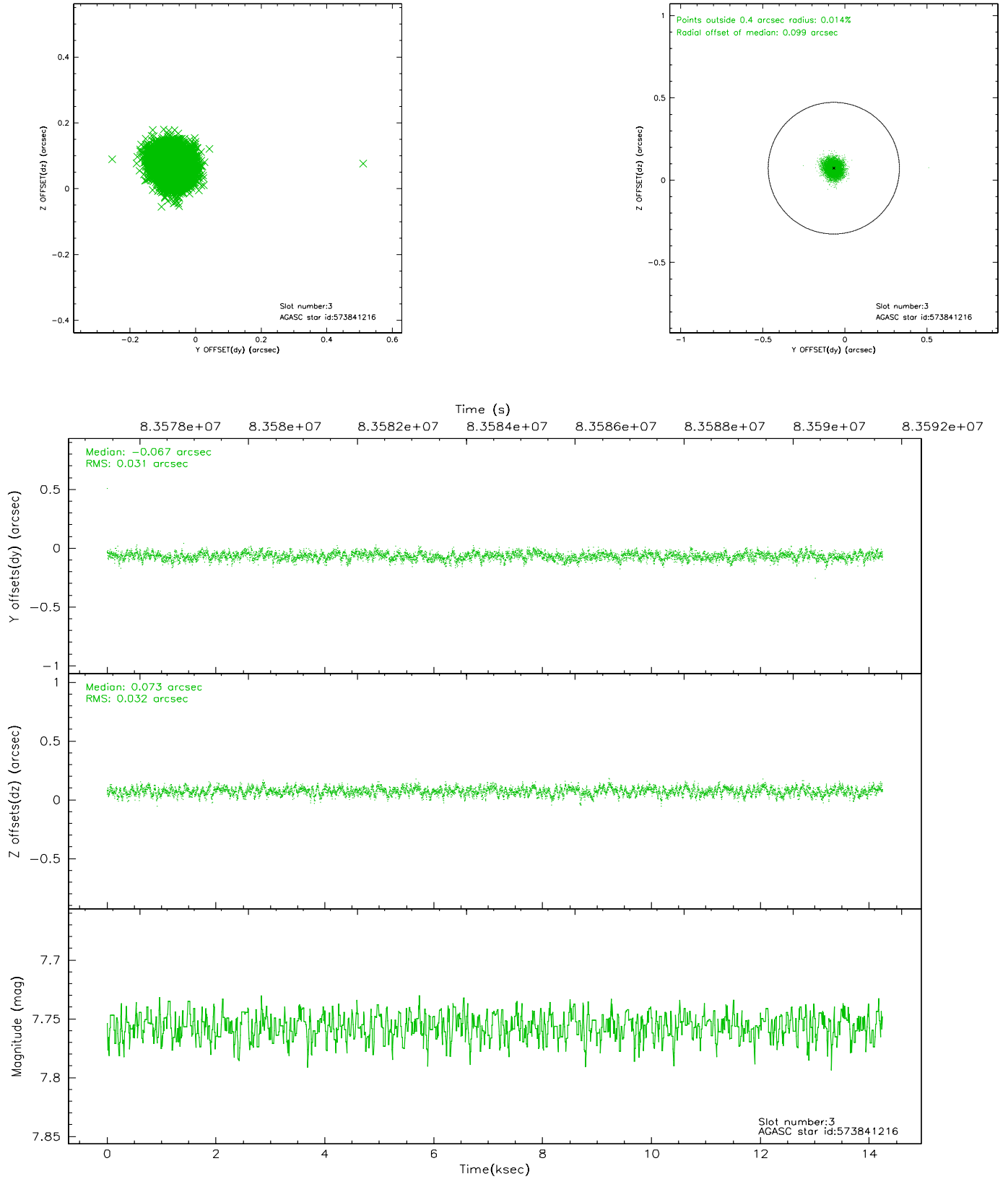


Slot Statistics

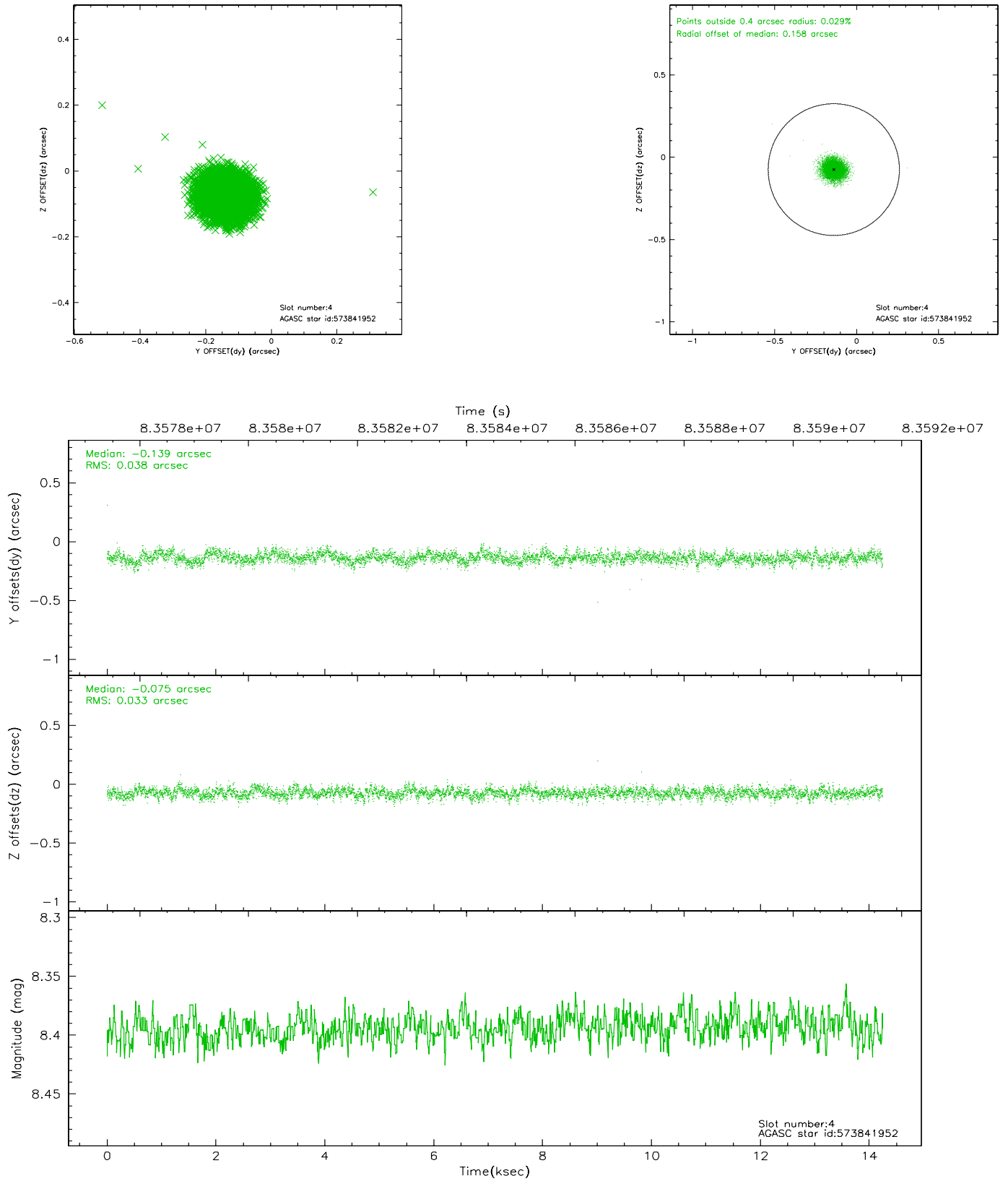
slot	status	id	mag	n_pts	med_dy	med_dz	dr1	dr2	ra	dec	mean_y	mean_z
0	FID	ACIS-S-2	7.09	3476	-0.010	-0.032	0.008	0.013	0.000000	0.000000	-754.41	-1788.96
1	FID	ACIS-S-4	7.19	3475	-0.052	0.013	0.005	0.009	0.000000	0.000000	2158.71	119.16
2	FID	ACIS-S-5	7.23	3475	0.031	0.027	0.007	0.012	0.000000	0.000000	-1806.76	113.28
3	GUIDE	573841216	7.76	6950	-0.067	0.073	0.047	0.076	131.551603	70.944177	1433.31	-411.96
4	GUIDE	573841952	8.39	6949	-0.139	-0.075	0.053	0.087	131.342455	71.292757	1761.80	823.28
5	GUIDE	573844192	8.91	6946	0.191	-0.041	0.063	0.101	128.397809	70.667986	-2339.15	414.24
6	GUIDE	573843648	9.18	6950	0.093	0.085	0.079	0.124	129.513201	70.245974	-1874.93	-1559.63
7	GUIDE	573839184	9.39	6941	-0.076	-0.039	0.086	0.138	131.928163	71.260188	2320.50	424.03

2.4 Star Slots

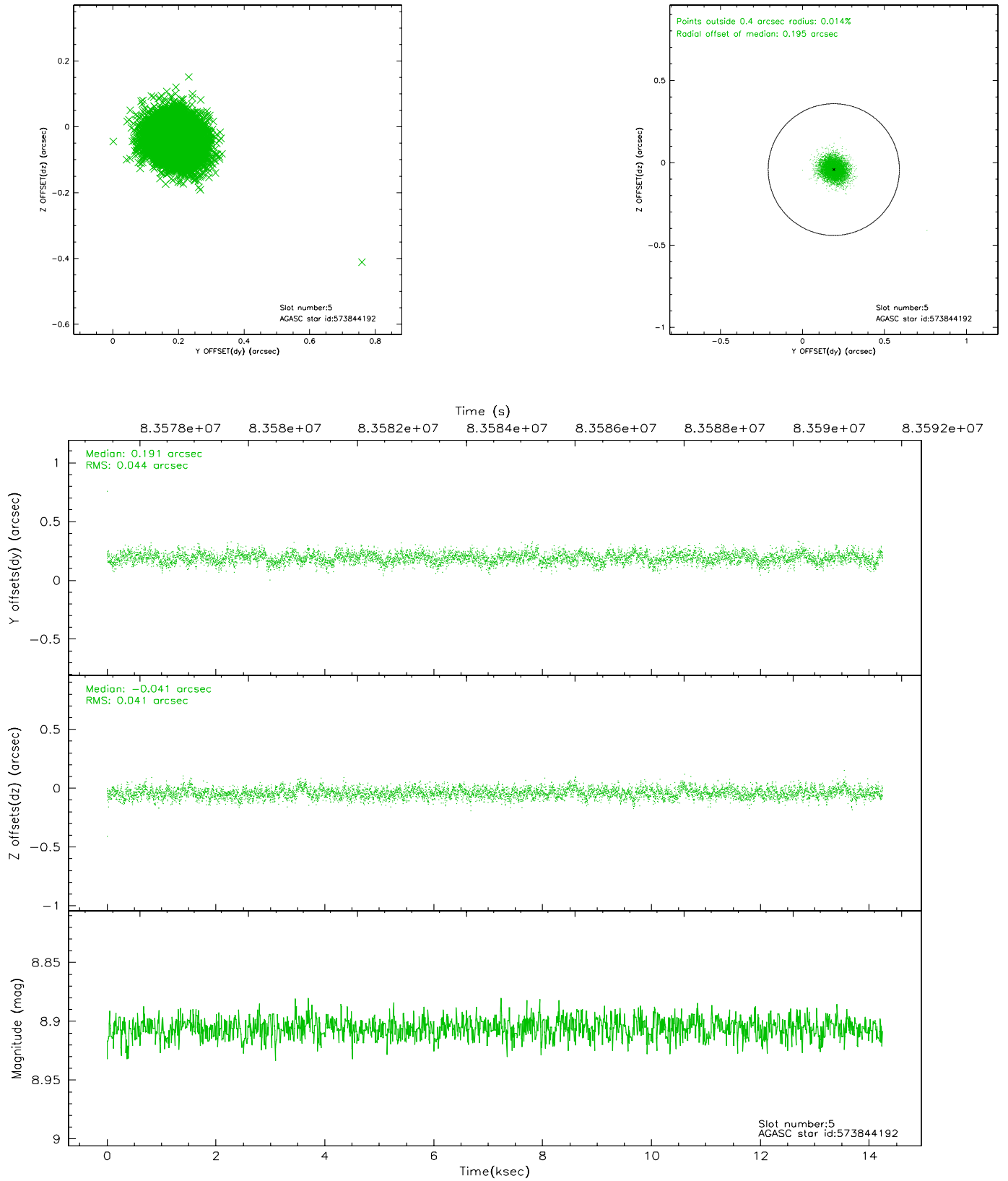
2.4.1 Slot 3



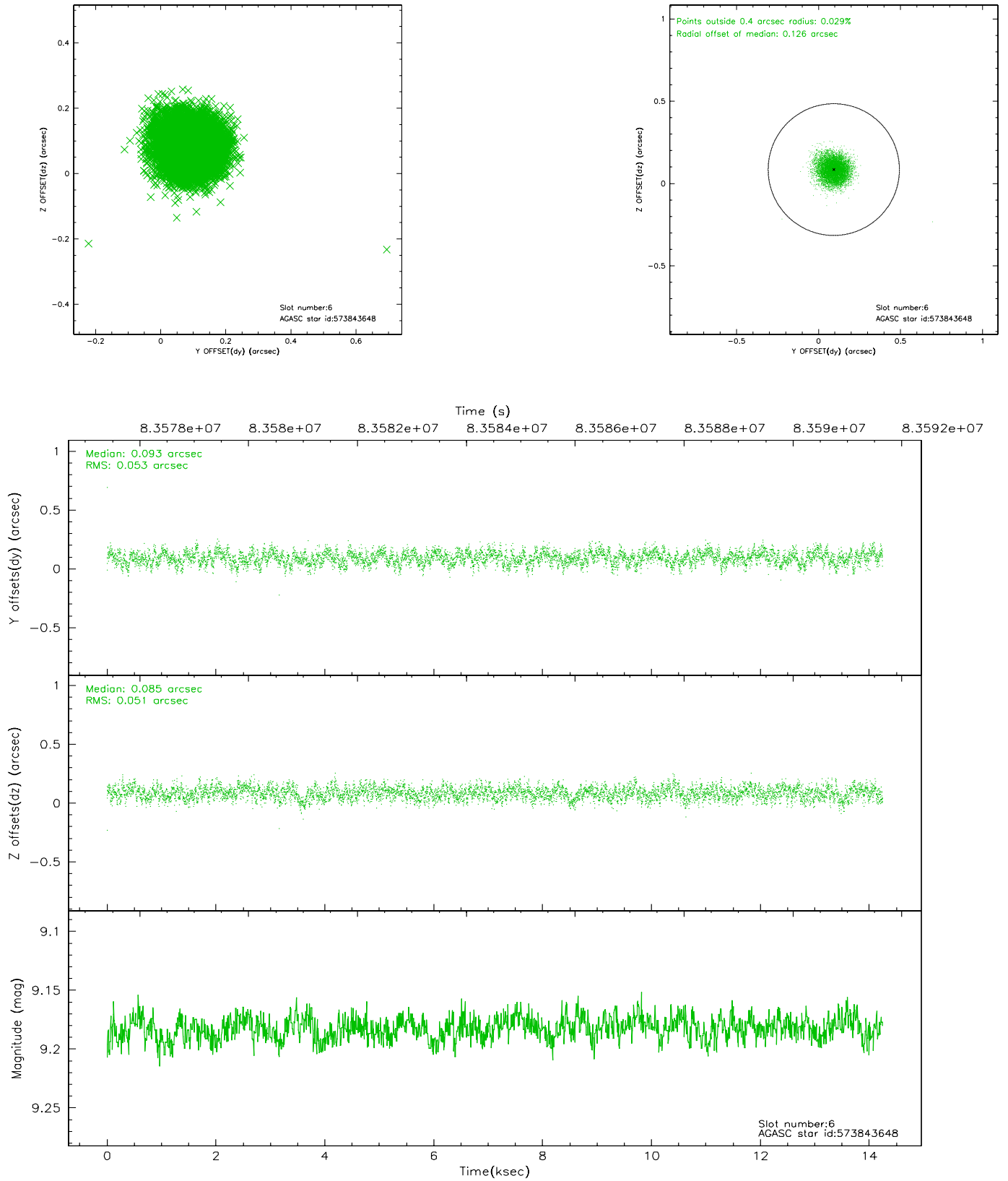
2.4.2 Slot 4



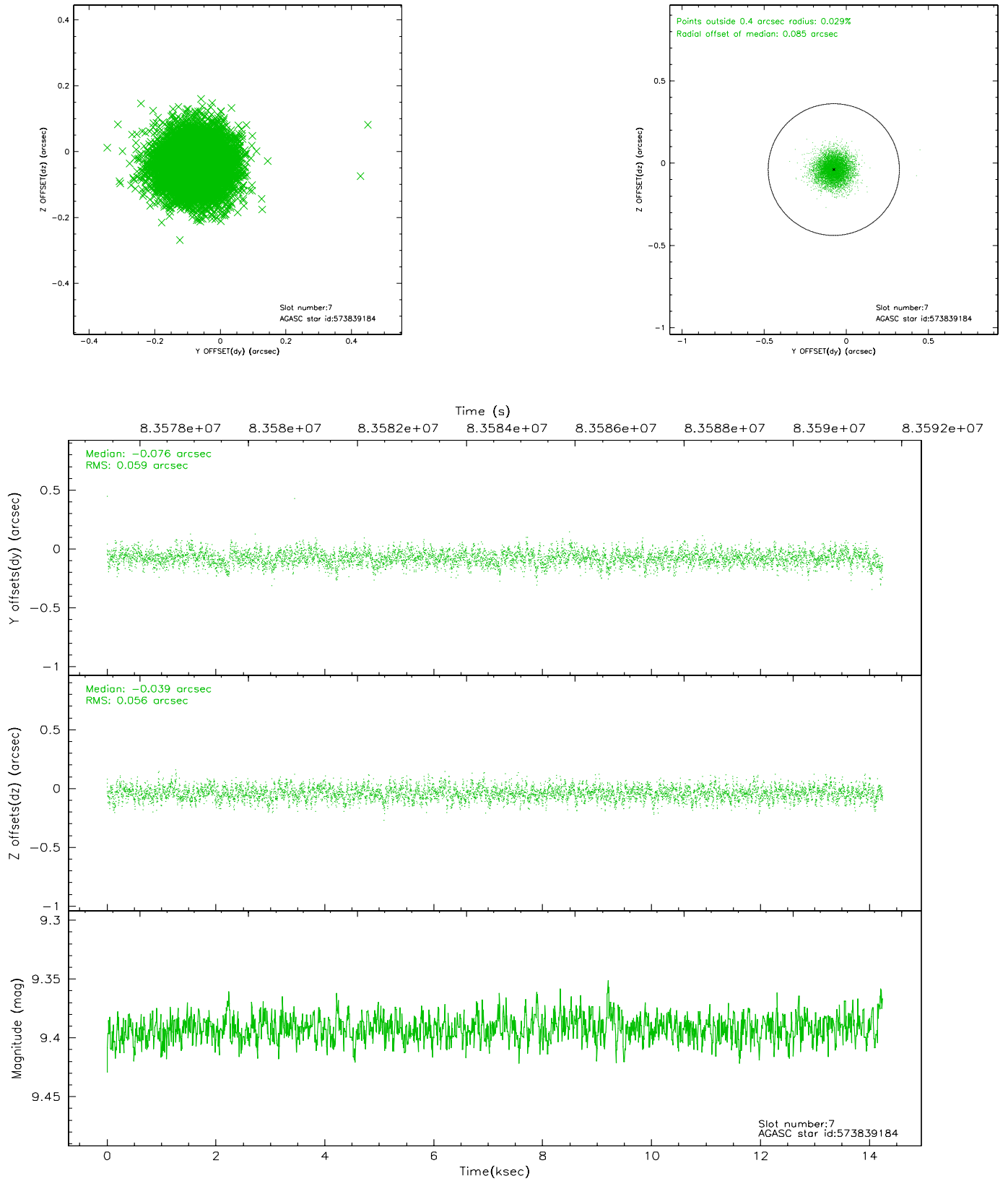
2.4.3 Slot 5



2.4.4 Slot 6

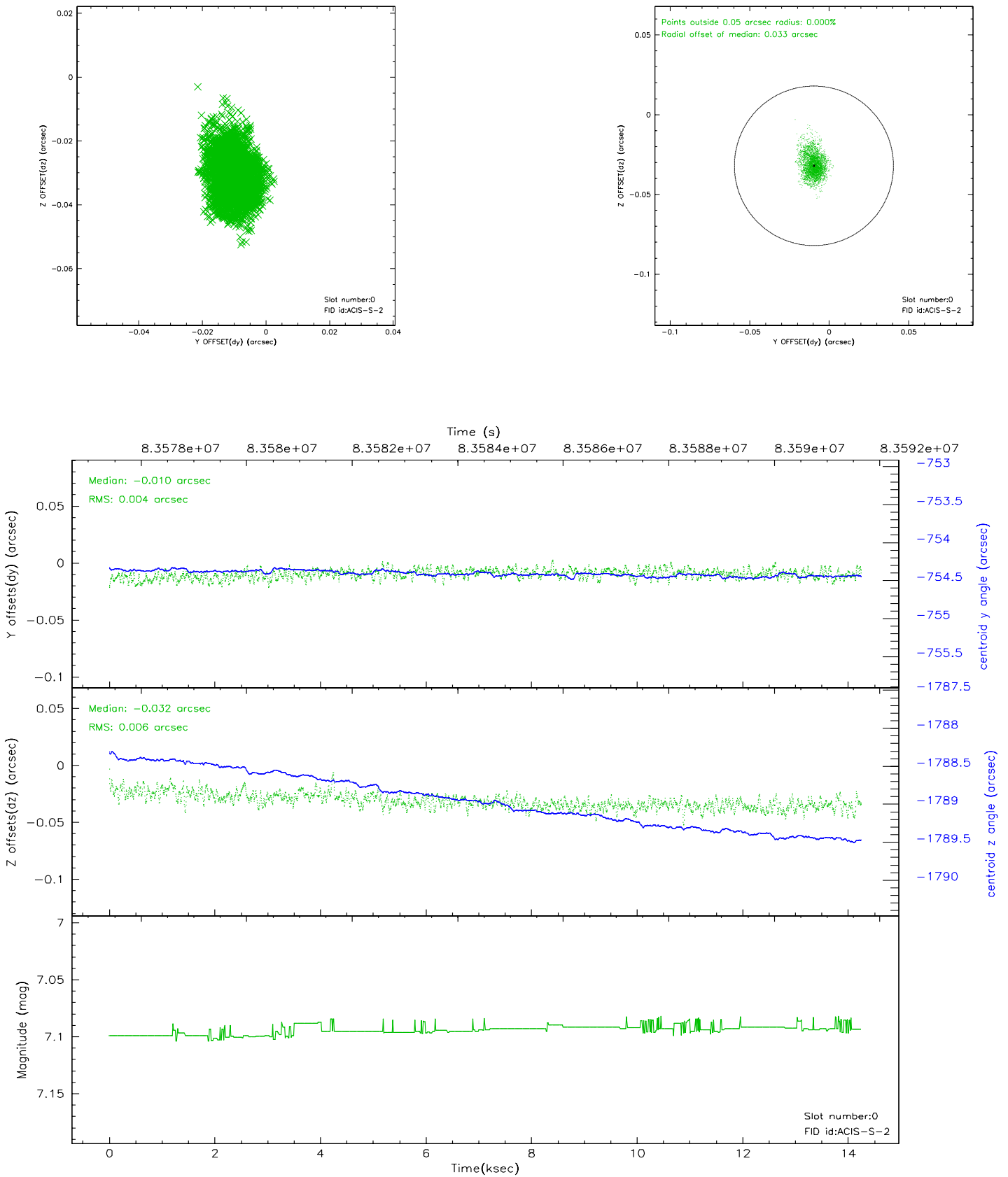


2.4.5 Slot 7

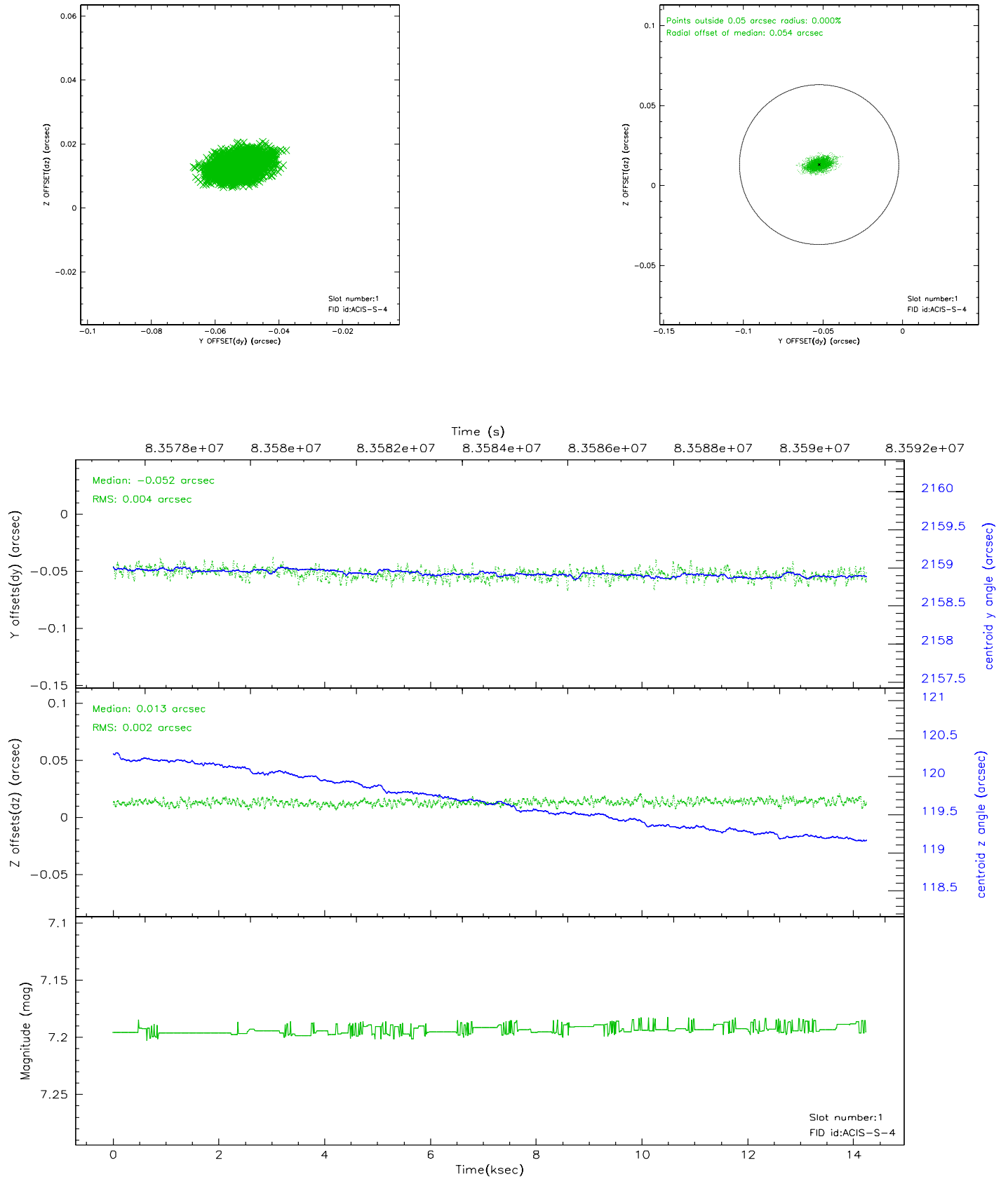


2.5 FID Slots

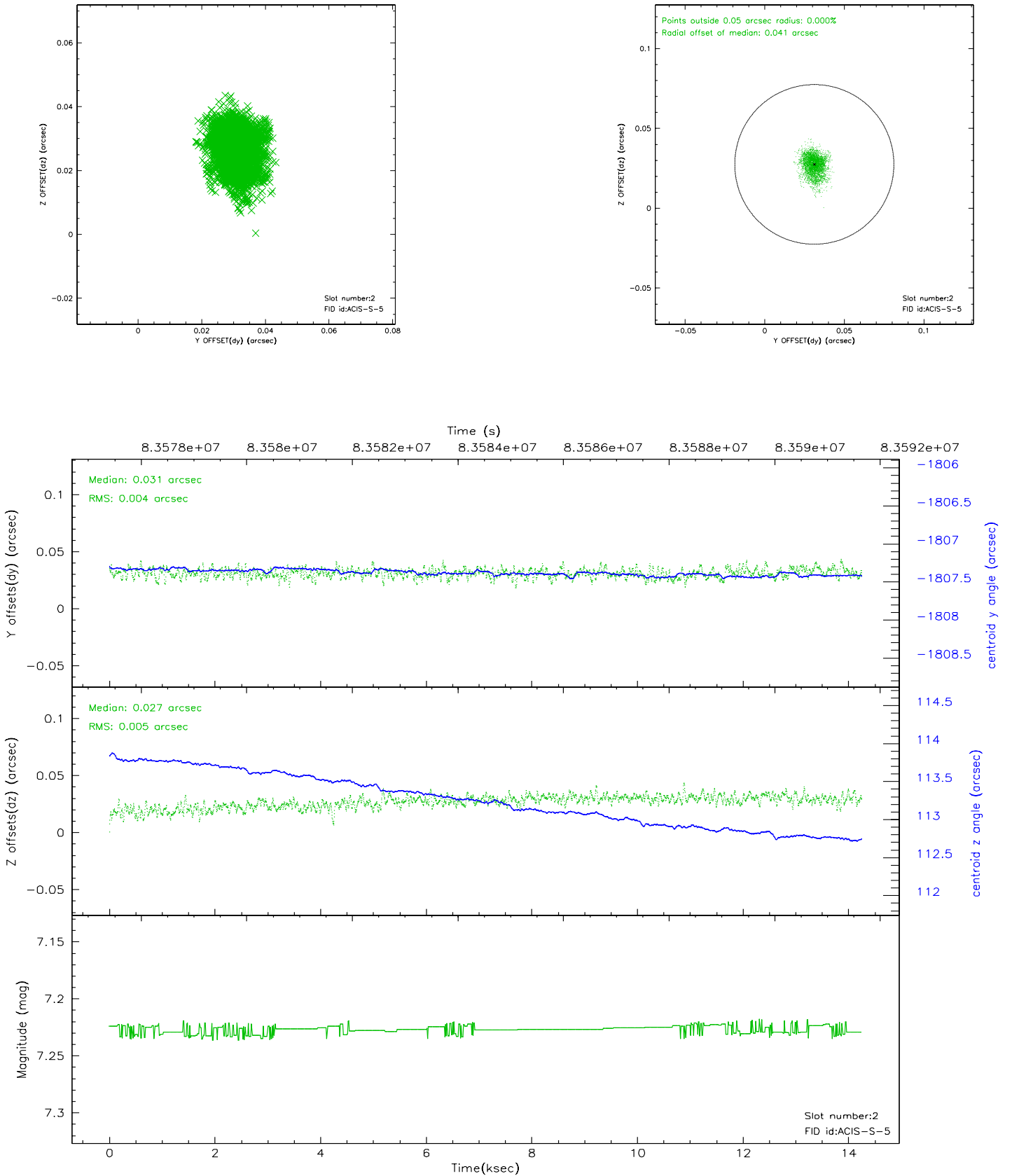
2.5.1 Slot 0



2.5.2 Slot 1



2.5.3 Slot 2

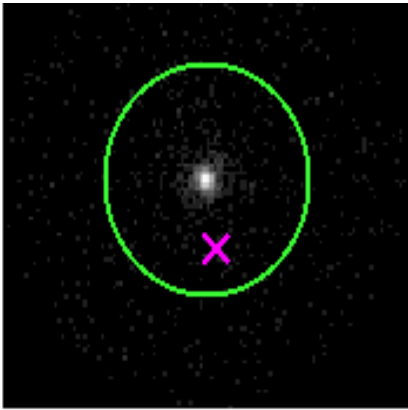


3 Gratings

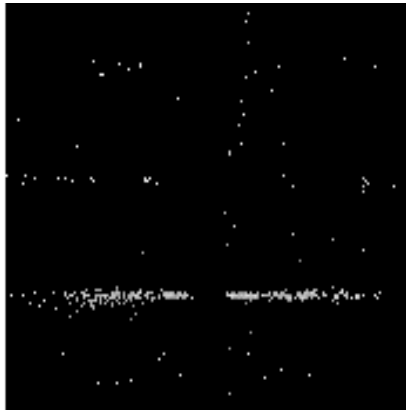
3.1 HEG Arm



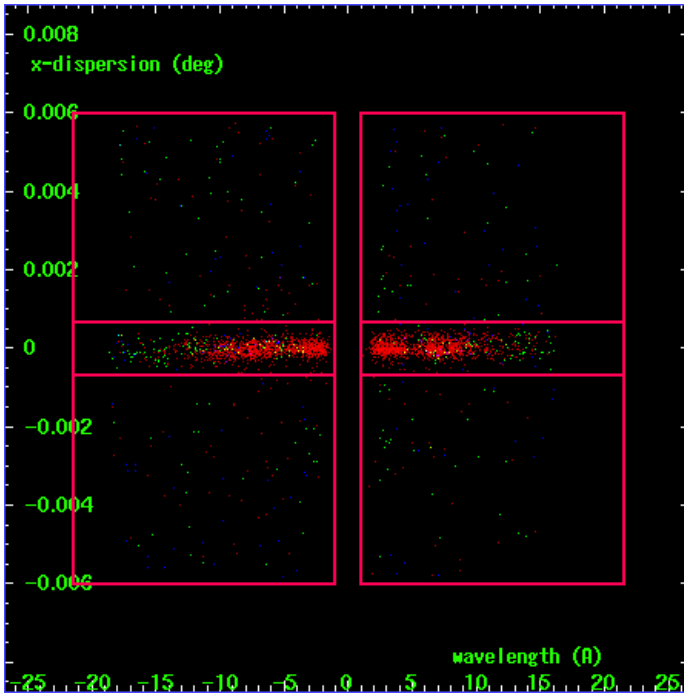
HEG Order Sort 123



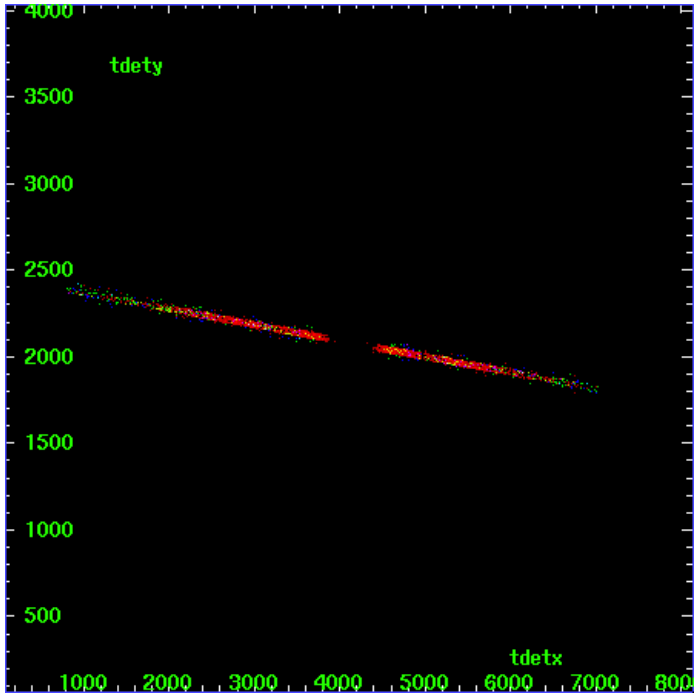
HEG Zero Order



HEG Order Sort ALL

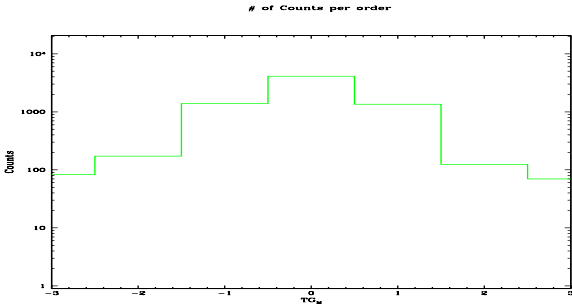


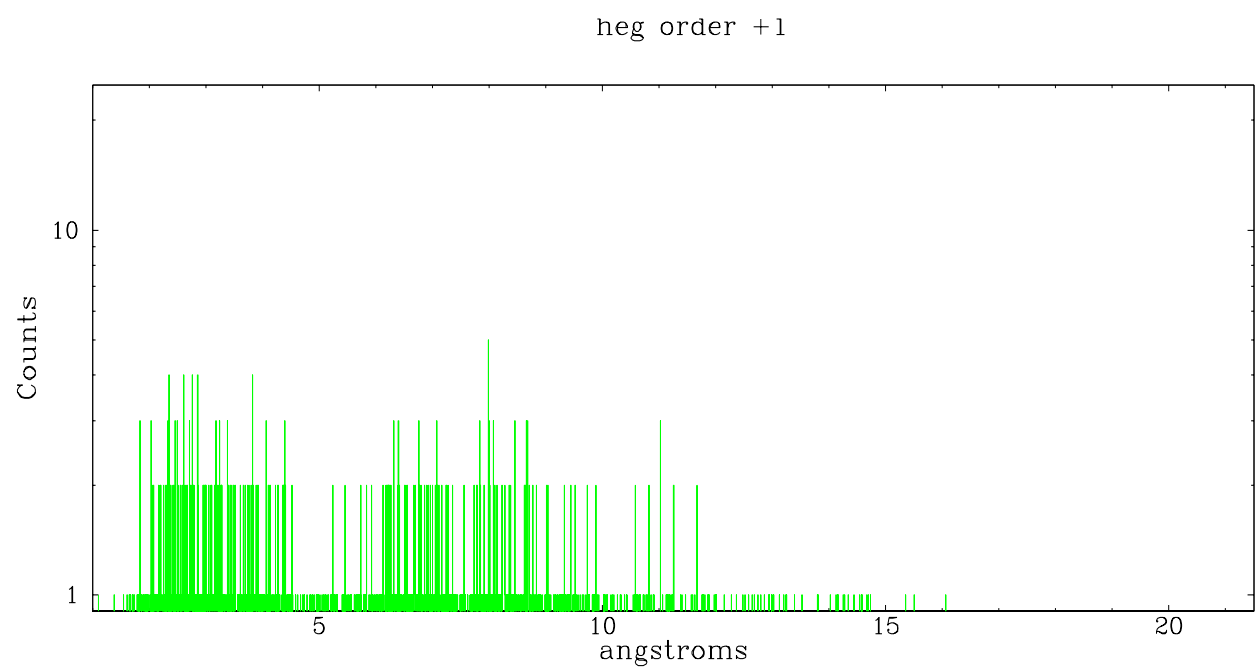
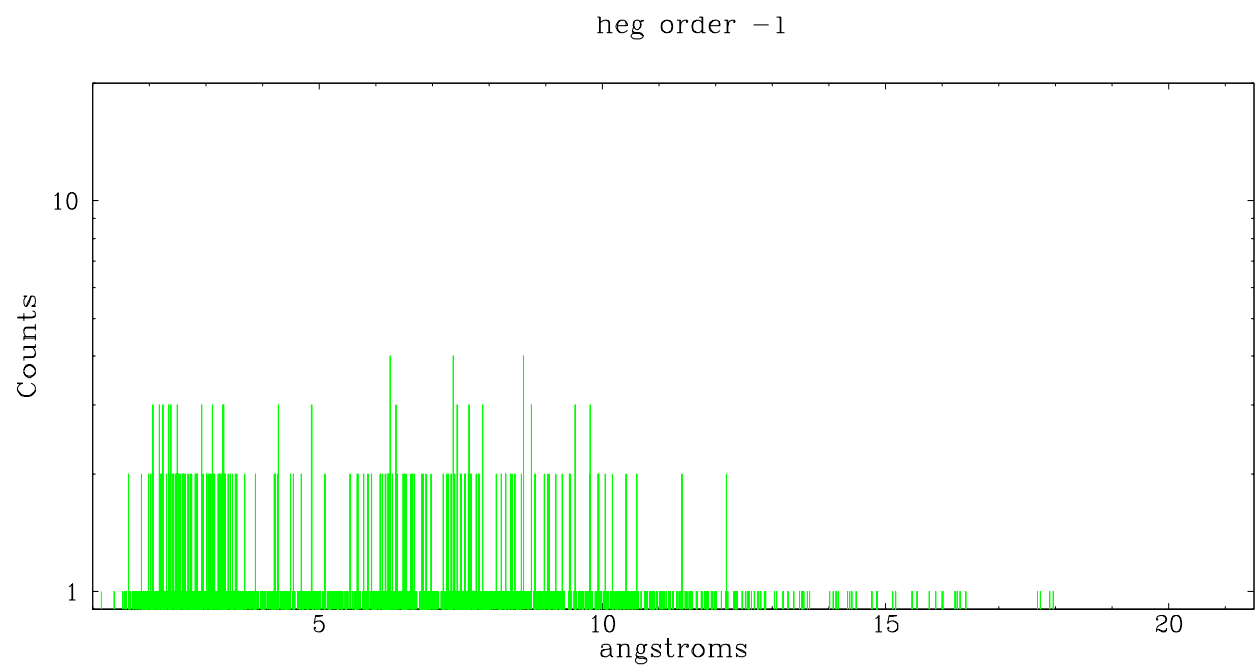
Spot Image HEG



Full Detector HEG

	order -3	order -2	order -1	order 0	order 1	order 2	order 3
Events	83	172	1392	4104	1346	124	70





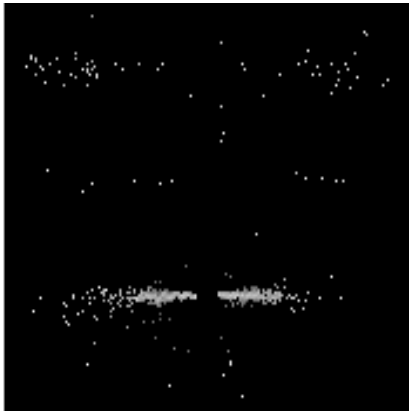
3.2 MEG Arm



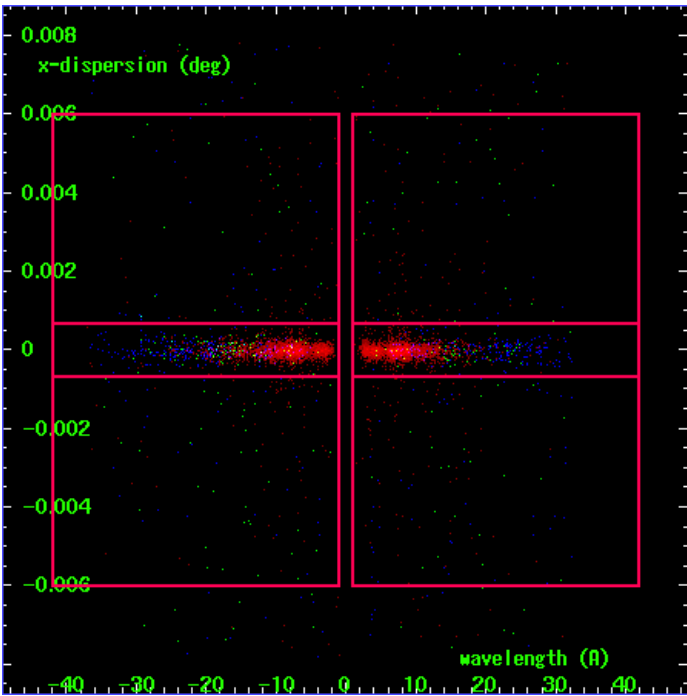
MEG Order Sort 123



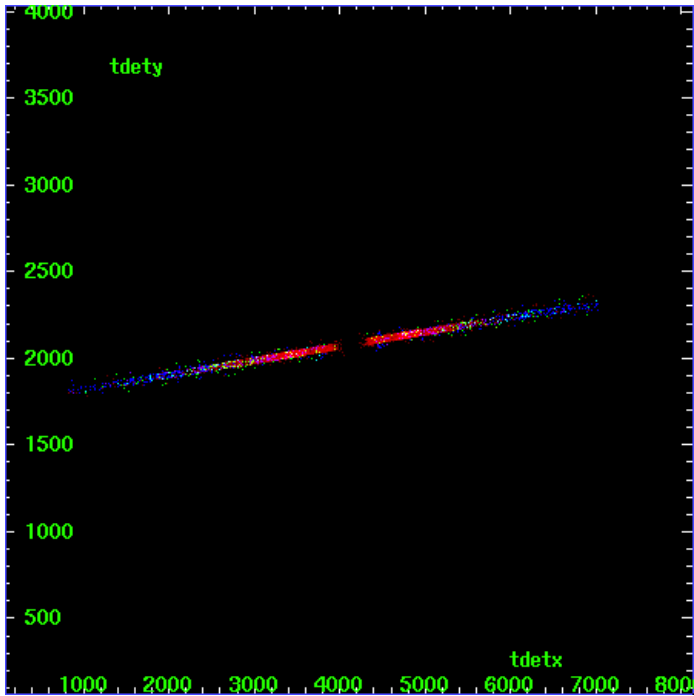
MEG Zero Order



MEG Order Sort ALL

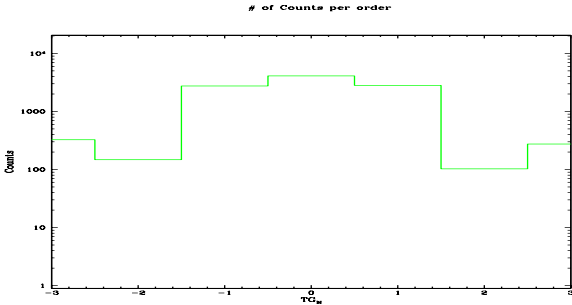


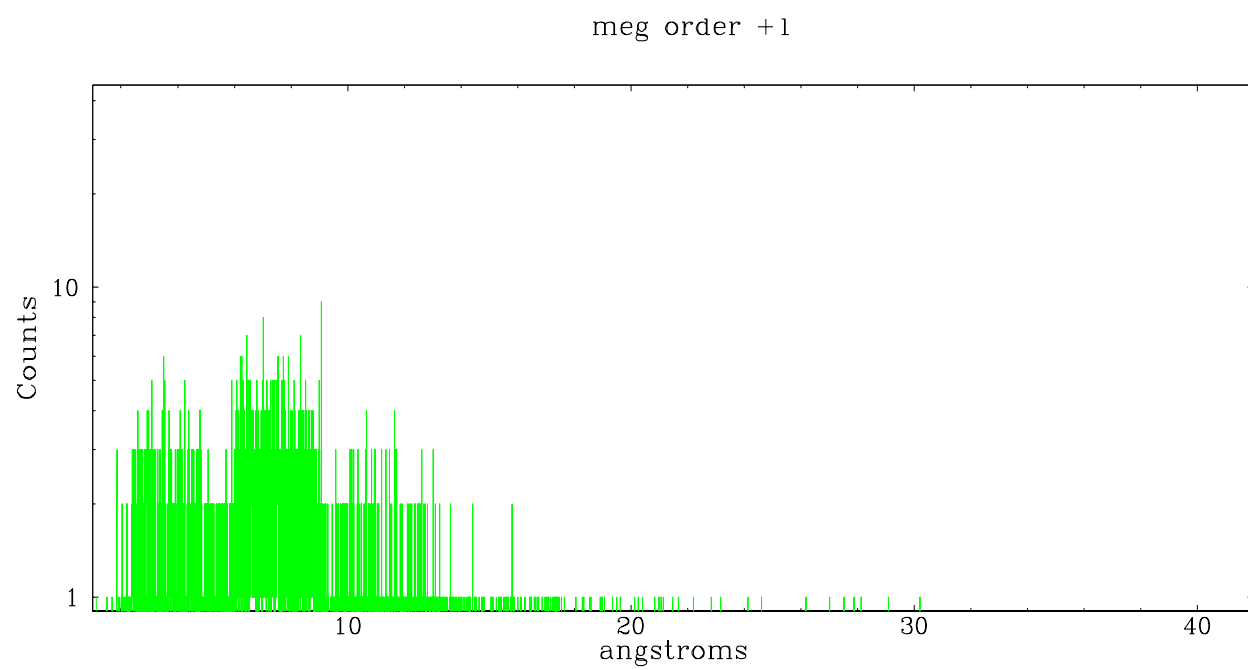
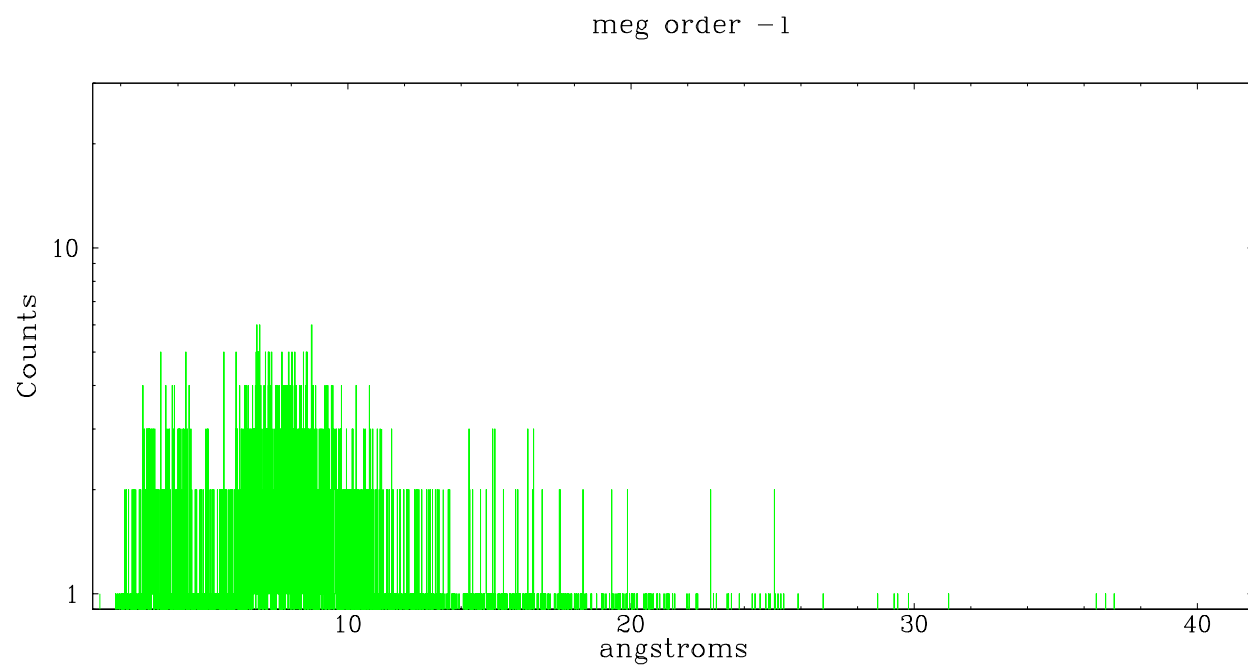
Spot Image MEG



Full Detector MEG

	order -3	order -2	order -1	order 0	order 1	order 2	order 3
Events	326	147	2756	4104	2804	103	275





A Summary

A.1 Status

V&V Scientist	Joy Nichols
V&V Date (YYYY-MM-DD)	2007.06.12
V&V Edition	1
V&V Disposition and Status	OK
V&V Charge Time	14.155

A.2 Comments