

V&V Reference Report

L2 ASCDS Version : 8.4.5

Observation 311 - L2 Version 4
Chandra X-Ray Center

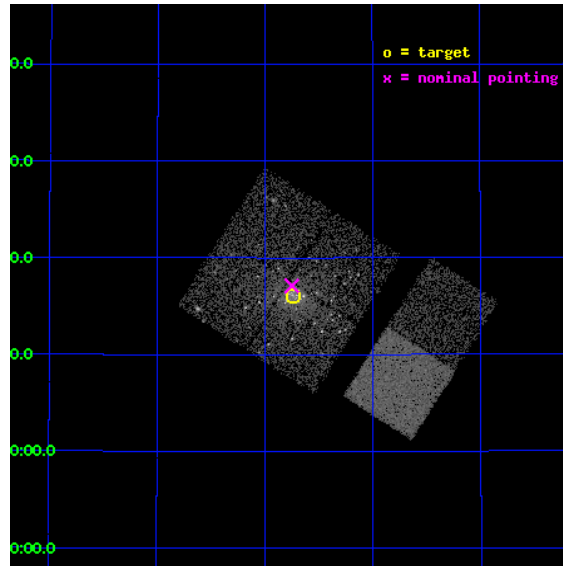
L2 Processing Date : Aug 30 2012

Contents

1	Front	2
2	OBI	3
2.1	OBI	3
2.1.1	Images	3
2.1.2	Bias	3
2.1.3	Parameters	4
2.1.4	Events	4
2.2	Compared Parameters	5
2.3	Aspect	6
2.4	Star Slots	9
2.4.1	Slot 3	9
2.4.2	Slot 4	10
2.4.3	Slot 5	11
2.4.4	Slot 6	12
2.4.5	Slot 7	13
2.5	FID Slots	14
2.5.1	Slot 0	14
2.5.2	Slot 1	15
2.5.3	Slot 2	16
A	Summary	17
A.1	Status	17
A.2	Comments	17

1 Front

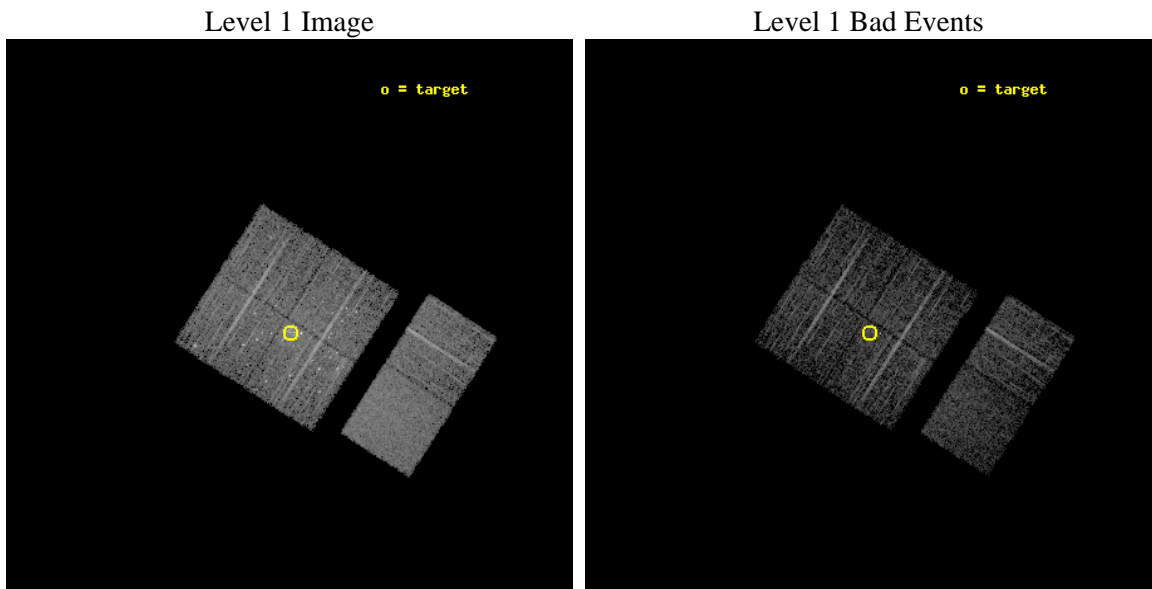
seq_num	600071	Sequence number
obs_id	311	Observation id
title	M31 MONITORING (FOLLOWUP)	Proposal title
observer	Dr. Stephen Murray	Principal investigator
object	M31 TRANSIENT TBD	Source name
dtcycle	0	
cycle	P	events from which exps? Prim/Second/Both
ra_targ	10.685	Observer's specified target RA [deg]
dec_targ	41.268972	Observer's specified target Dec [deg]
ra_nom	10.687368729026	Nominal RA [deg]
dec_nom	41.28524955939	Nominal Dec [deg]
roll_nom	122.67265431702	Nominal Roll [deg]
revision	4	Processing version of data
ontime	4955.5915710628	Sum of GTIs [s]
livetime	4892.840886691	Livetime [s]
ontime0	4955.4684510678	Sum of GTIs [s]
ontime1	4955.5094910711	Sum of GTIs [s]
ontime2	4955.5505310744	Sum of GTIs [s]
ontime3	4955.5915710628	Sum of GTIs [s]
ontime6	4955.6736510694	Sum of GTIs [s]
ontime7	4955.6326110661	Sum of GTIs [s]
l2events	45136	Number of level 2 events



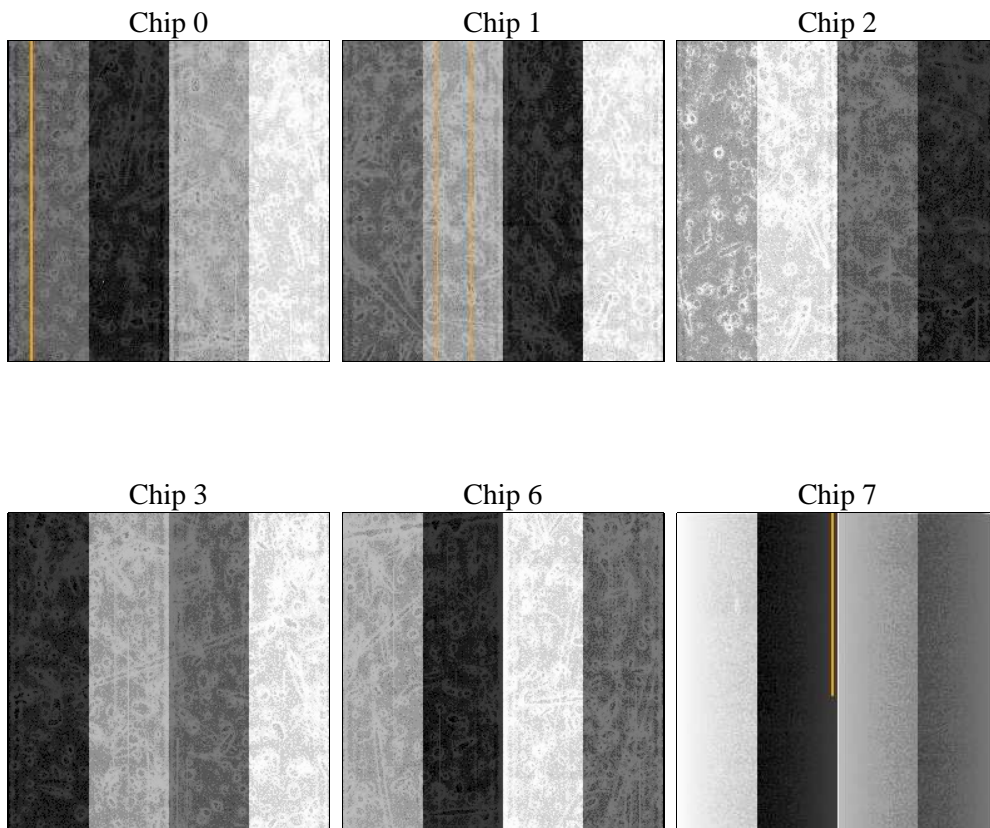
2 OBI

2.1 OBI

2.1.1 Images



2.1.2 Bias



2.1.3 Parameters

obi_num	0	Obi number	sched_exp_time	5000.000000	[s] Scheduled observation exposure time
ascdsver	8.4.5	Processing system revision	ontime	4955.5915710628	Sum of GTIs [s]
caldsver	4.5.1.1	 	ontime0	4955.4684510678	Sum of GTIs [s]
date	2012-08-30T21:13:15	Date and time of file creation	ontime1	4955.5094910711	Sum of GTIs [s]
revision	4	Processing version of data	ontime2	4955.5505310744	Sum of GTIs [s]
			ontime3	4955.5915710628	Sum of GTIs [s]
			ontime6	4955.6736510694	Sum of GTIs [s]
			ontime7	4955.6326110661	Sum of GTIs [s]
			l1events	196237	Number of level 1 events

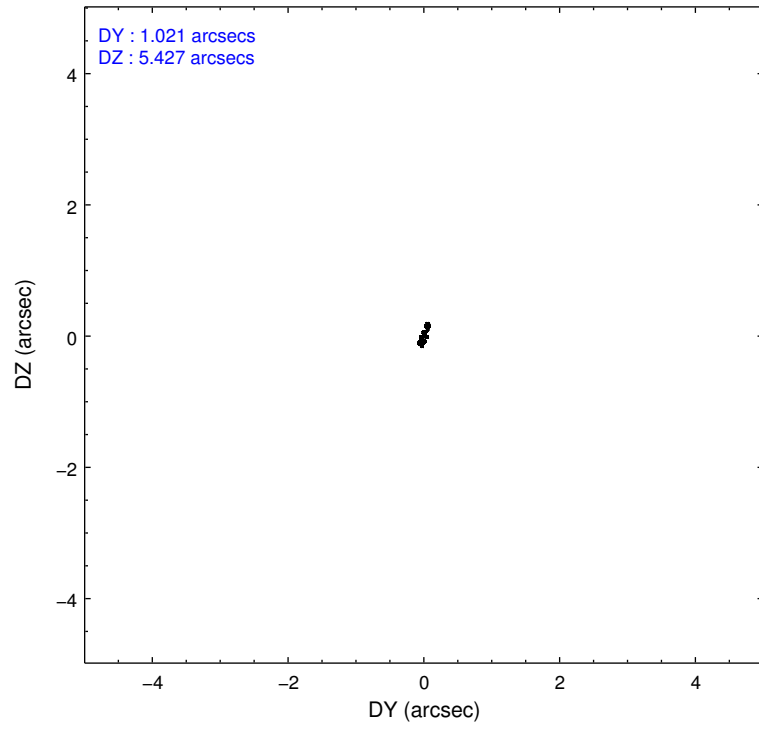
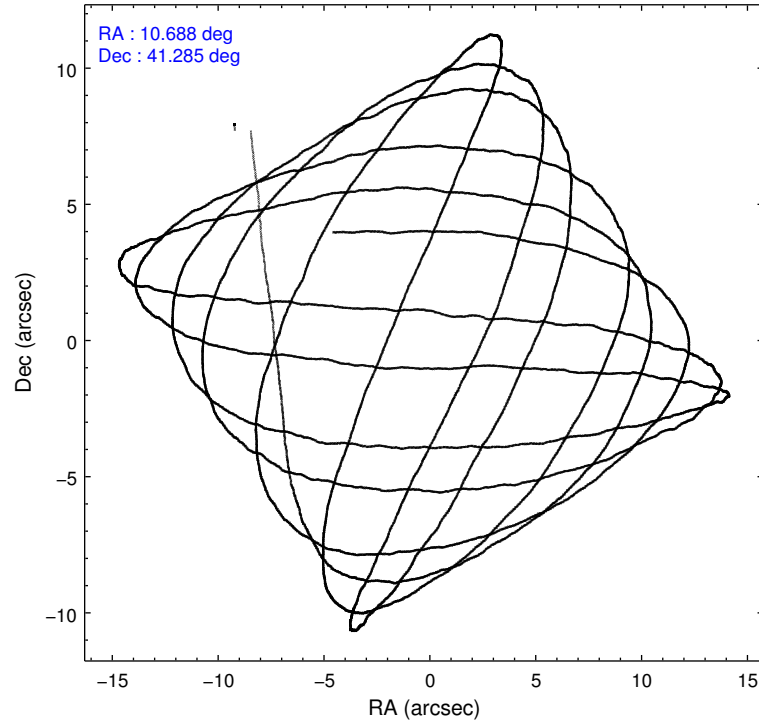
2.1.4 Events

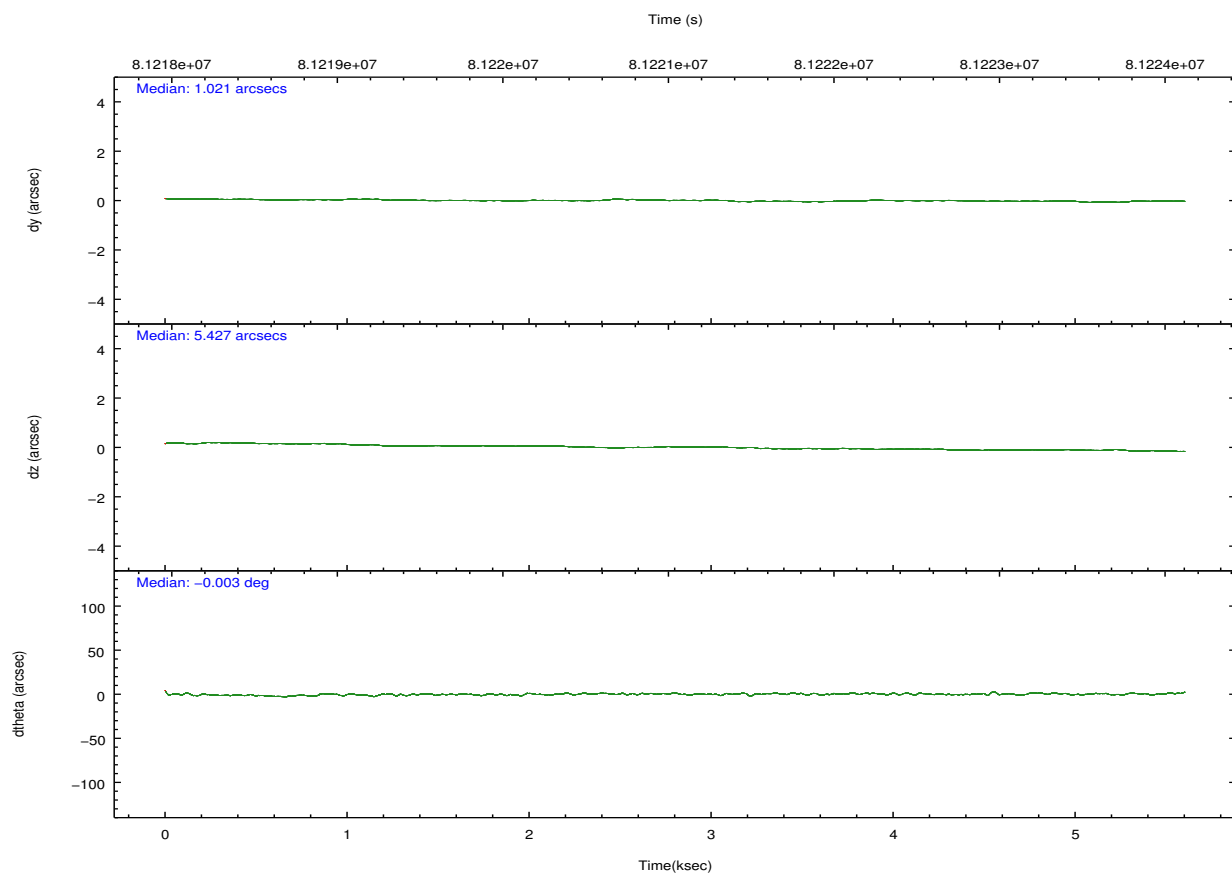
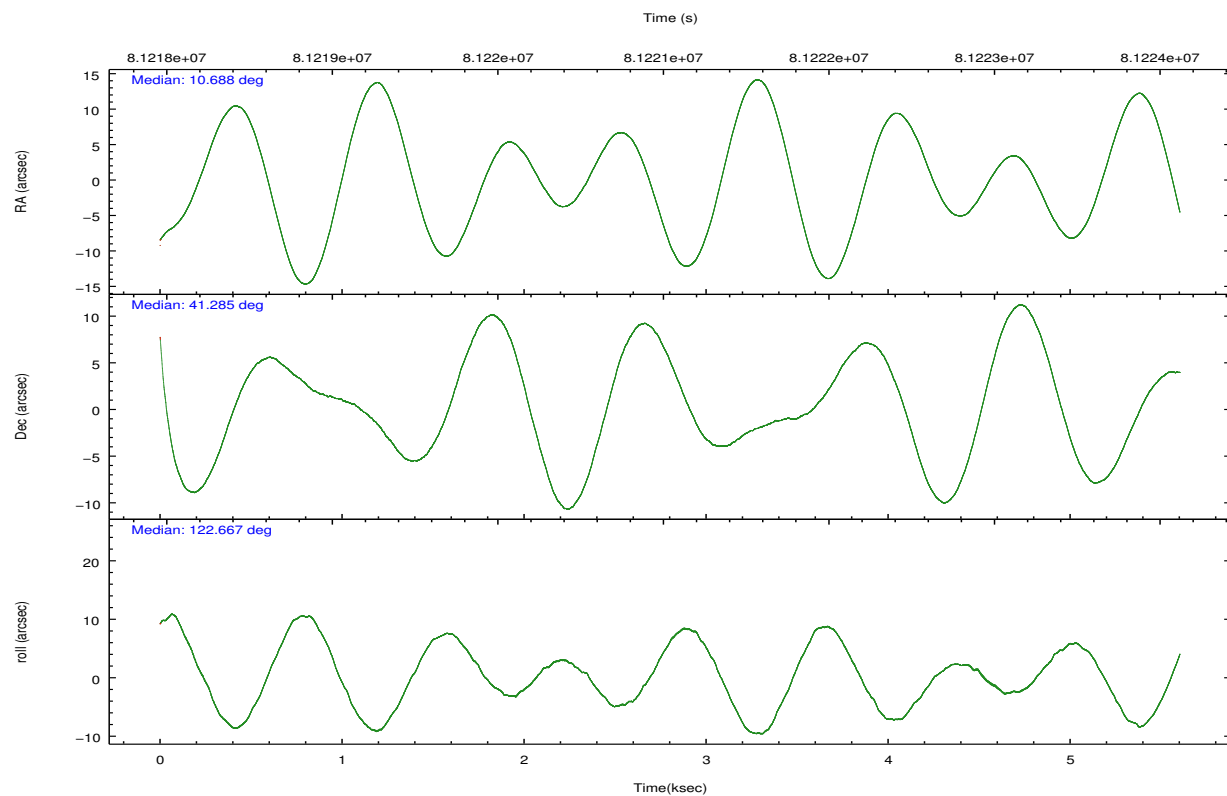
	ccd 0	ccd 1	ccd 2	ccd 3	ccd 6	ccd 7		ccd 0	ccd 1	ccd 2	ccd 3	ccd 6	ccd 7
level 1 events	28073	32171	31592	39336	29715	35350	grade 0 events	2578	4504	3669	8557	1468	1593
rejected events	23380	24897	25647	27164	26243	20158		9%	14%	11%	21%	4%	4%
rejected %	83%	77%	81%	69%	88%	57%	grade 1 events	32	48	30	214	14	37
								0%	0%	0%	0%	0%	0%
							grade 2 events	815	1134	960	1605	727	3124
								2%	3%	3%	4%	2%	8%
							grade 3 events	384	443	359	569	329	1391
								1%	1%	1%	1%	1%	3%
							grade 4 events	343	461	345	609	298	1394
								1%	1%	1%	1%	1%	3%
							grade 5 events	913	1032	883	1165	1138	3391
								3%	3%	2%	2%	3%	9%
							grade 6 events	578	741	620	844	656	7713
								2%	2%	1%	2%	2%	21%
							grade 7 events	22430	23808	24726	25773	25085	16707
								79%	74%	78%	65%	84%	47%

2.2 Compared Parameters

Parameter	Planned	Actual	Parameter	Planned	Actual
Instrument	ACIS	ACIS	Obspar format version number	7	7
Detector	ACIS-012367	ACIS-012367	Obspar file type	PREDICTED	ACTUAL
Grating	NONE	NONE	Obspar update status	NONE	UPDATED
Data mode	FAINT	FAINT	Number of optional ACIS chips dropped	0	0
Observation mode	POINTING	POINTING	On-chip summing requested	N	N
[deg] Pointing RA	10.719796	10.68736872902601	Subarray requested	NONE	NONE
[deg] Pointing Dec	41.272567	41.28524955939021	Alternating exposures requested	N	N
[deg] Pointing Roll	122.442574	122.6726543170221	[s] Primary exposure time	0.000000	3.2
[mm] SIM focus pos	-0.782348	-0.7809083437167272			
[mm] SIM defocus	0	0.001439871863259334			
[mm] SIM translation stage pos	-233.592463	-233.5874344608287			
[mm] SIM translation stage offset	0	-0.005018542100998502			
[s] Observation start time (MET)	81218843.184000	81217674.591829			
Observation start date	2000-07-29T00:46:19	2000-07-29T00:27:54			
[s] Observation end time (MET)	81223843.184000	81224420.62958001			
Observation end date	2000-07-29T02:09:39	2000-07-29T02:20:20			
Read mode	TIMED	TIMED			

2.3 Aspect



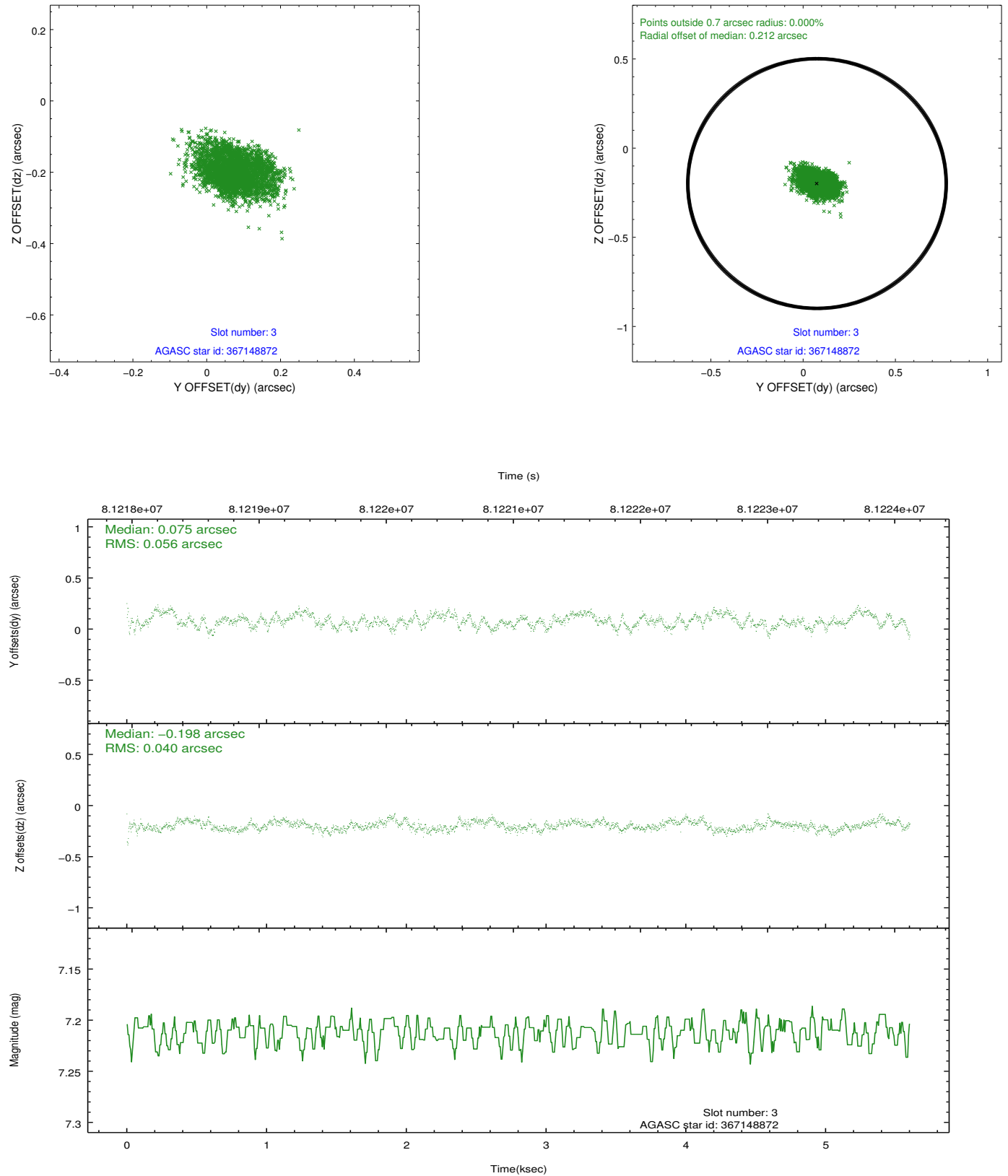


Slot Statistics

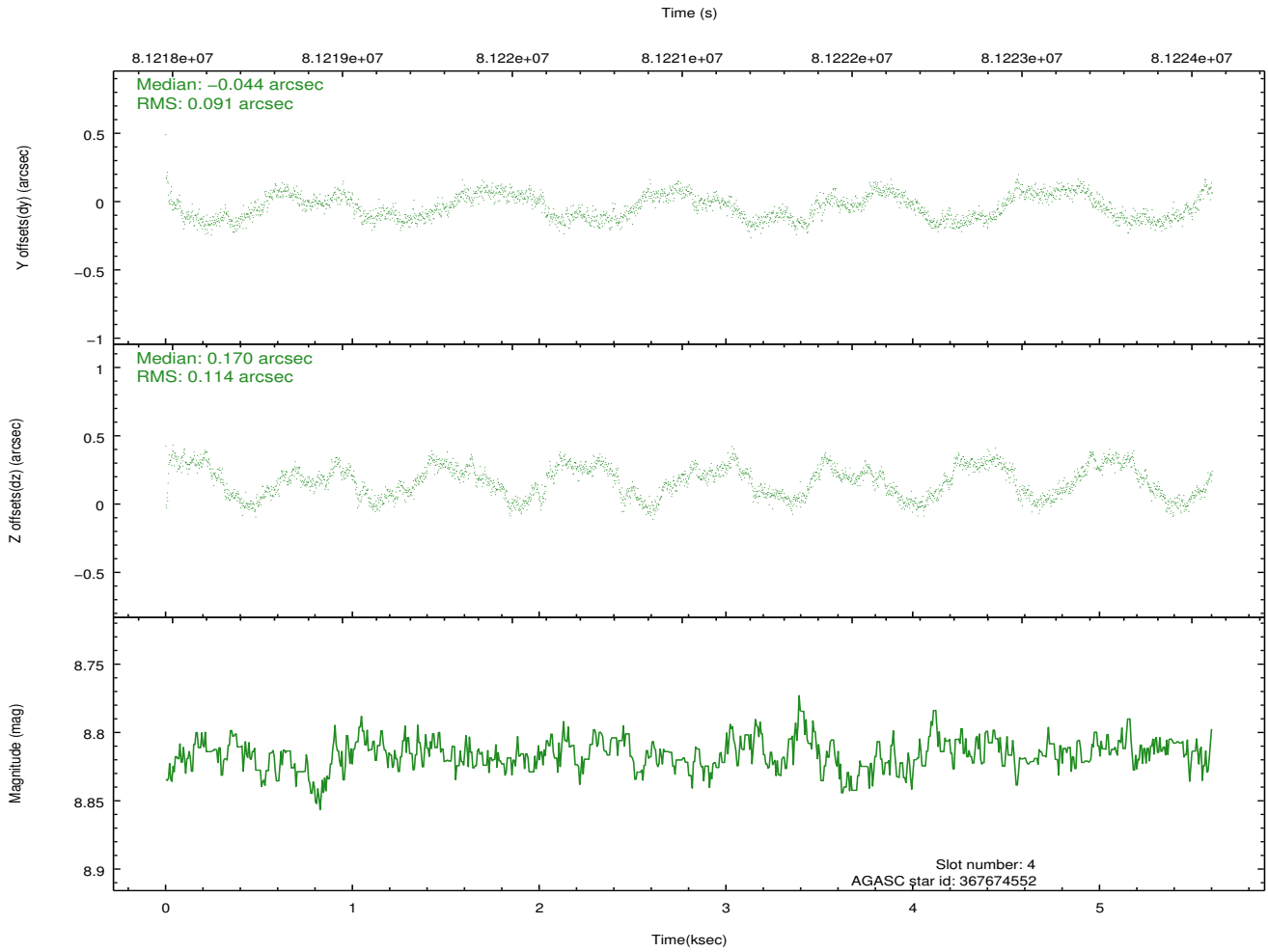
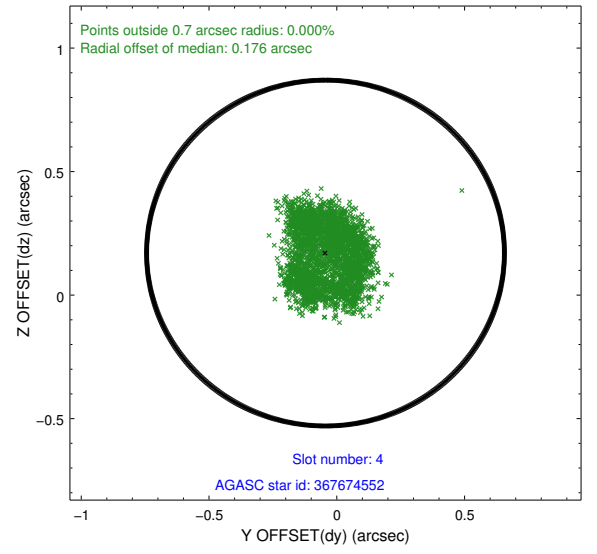
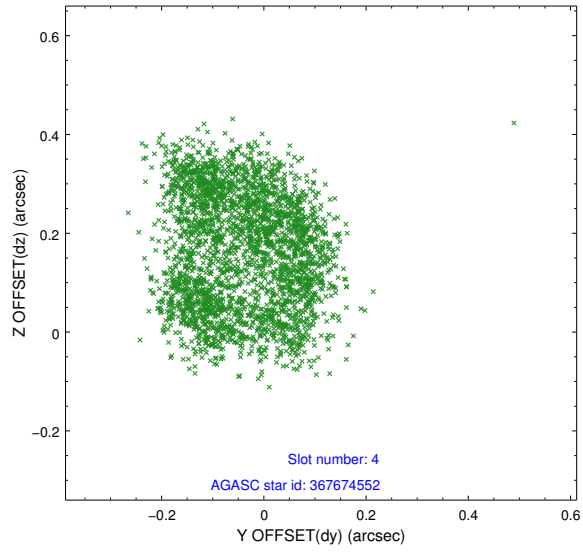
slot	status	id	mag	n_pts	med_dy	med_dz	dr1	dr2	ra	dec	mean_y	mean_z
0	FID	ACIS-I-2	7.15	1367	-0.049	-0.013	0.006	0.011	0.000000	0.000000	-755.39	-835.17
1	FID	ACIS-I-4	7.19	1366	-0.050	0.028	0.008	0.013	0.000000	0.000000	2158.17	1070.54
2	FID	ACIS-I-6	7.26	1367	0.000	0.049	0.009	0.018	0.000000	0.000000	406.10	1713.94
3	GUIDE	367148872	7.21	2734	0.075	-0.198	0.072	0.118	10.505940	40.688258	-1461.13	1620.94
4	GUIDE	367674552	8.82	2734	-0.044	0.170	0.160	0.221	11.016238	41.570845	479.07	-1249.26
5	GUIDE	367146616	8.85	2734	0.097	0.166	0.073	0.120	11.418645	41.190163	-1258.70	-1442.63
6	GUIDE	367658664	9.58	2731	-0.018	-0.088	0.101	0.167	10.374070	41.369746	797.80	599.56
7	GUIDE	367665472	9.49	2732	-0.120	-0.041	0.093	0.148	10.241611	41.730843	2085.10	198.17

2.4 Star Slots

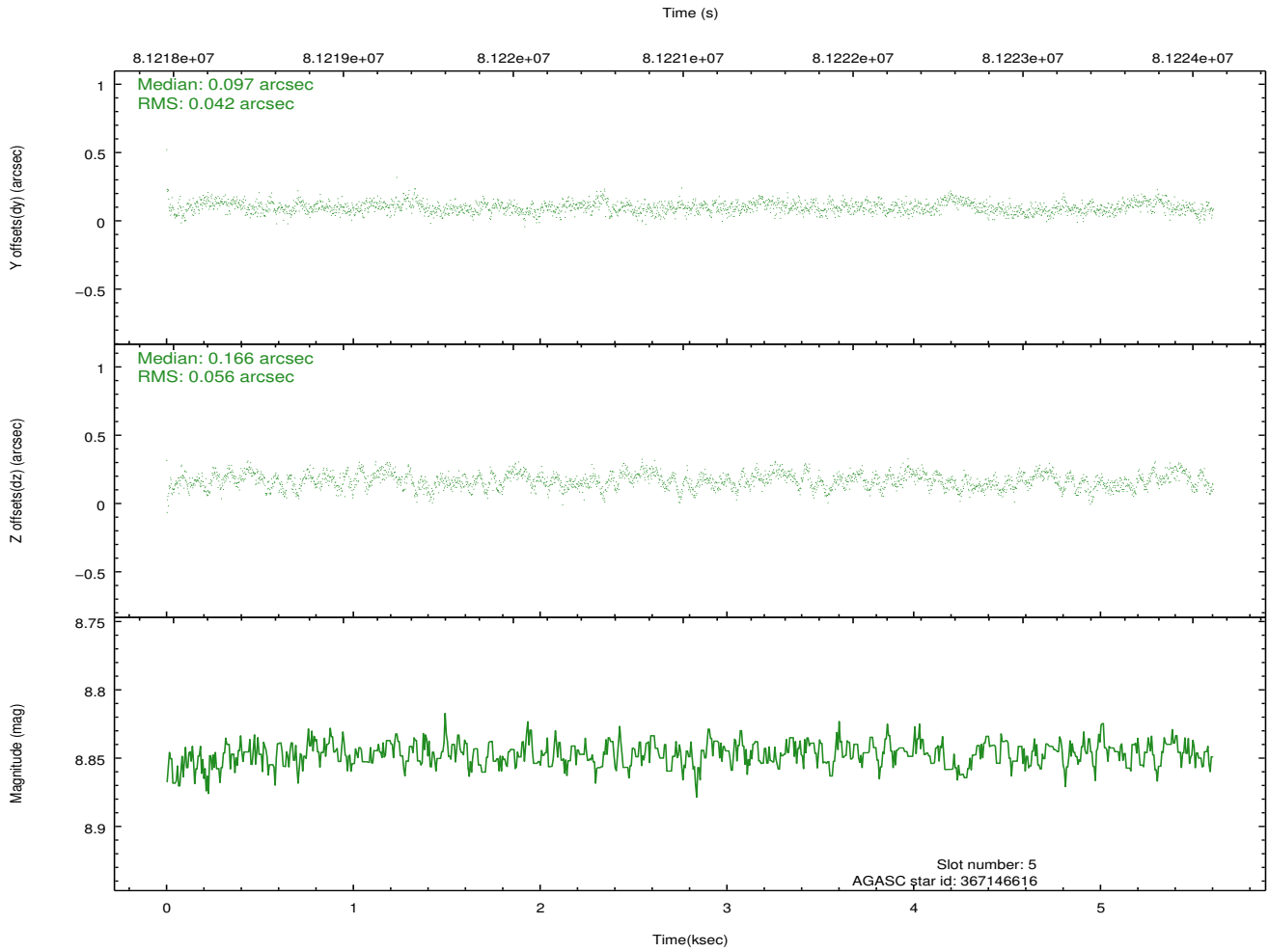
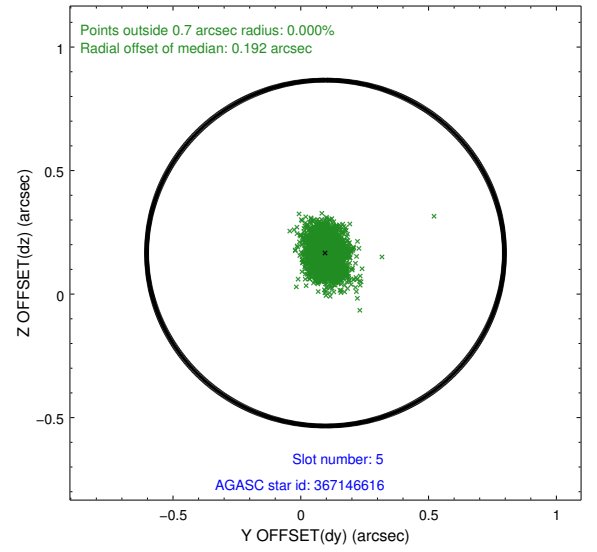
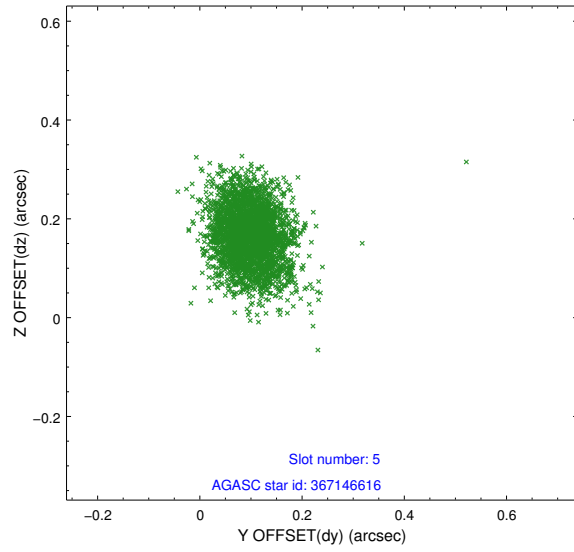
2.4.1 Slot 3



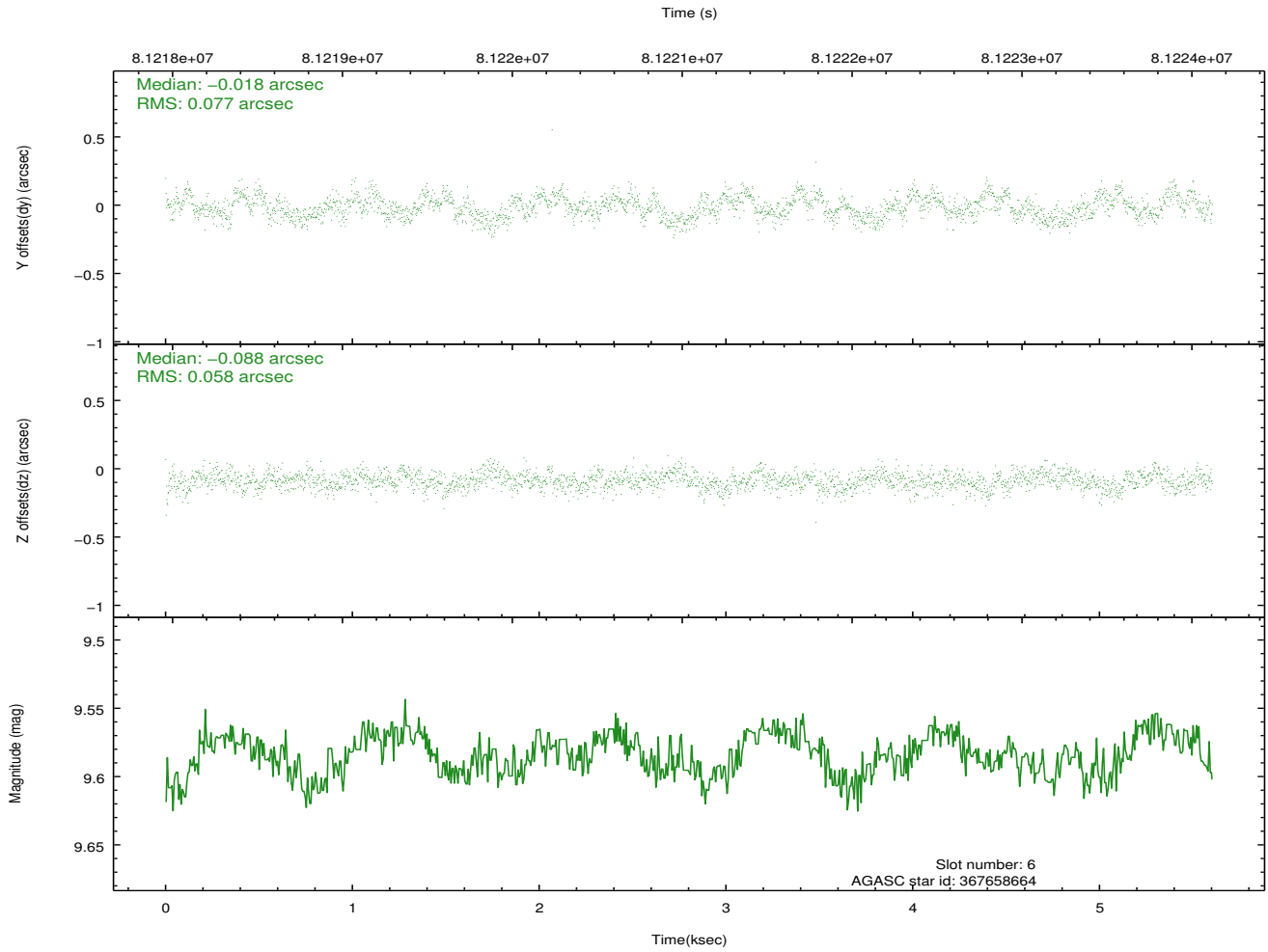
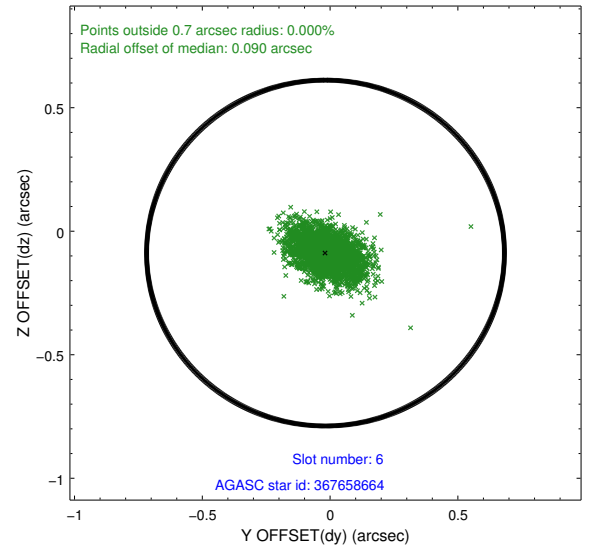
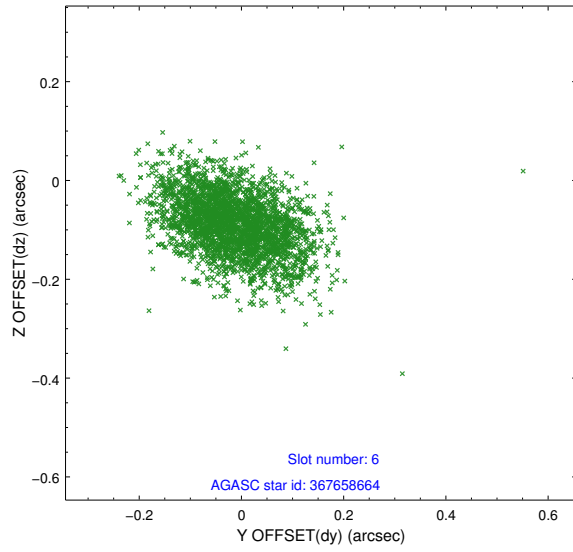
2.4.2 Slot 4



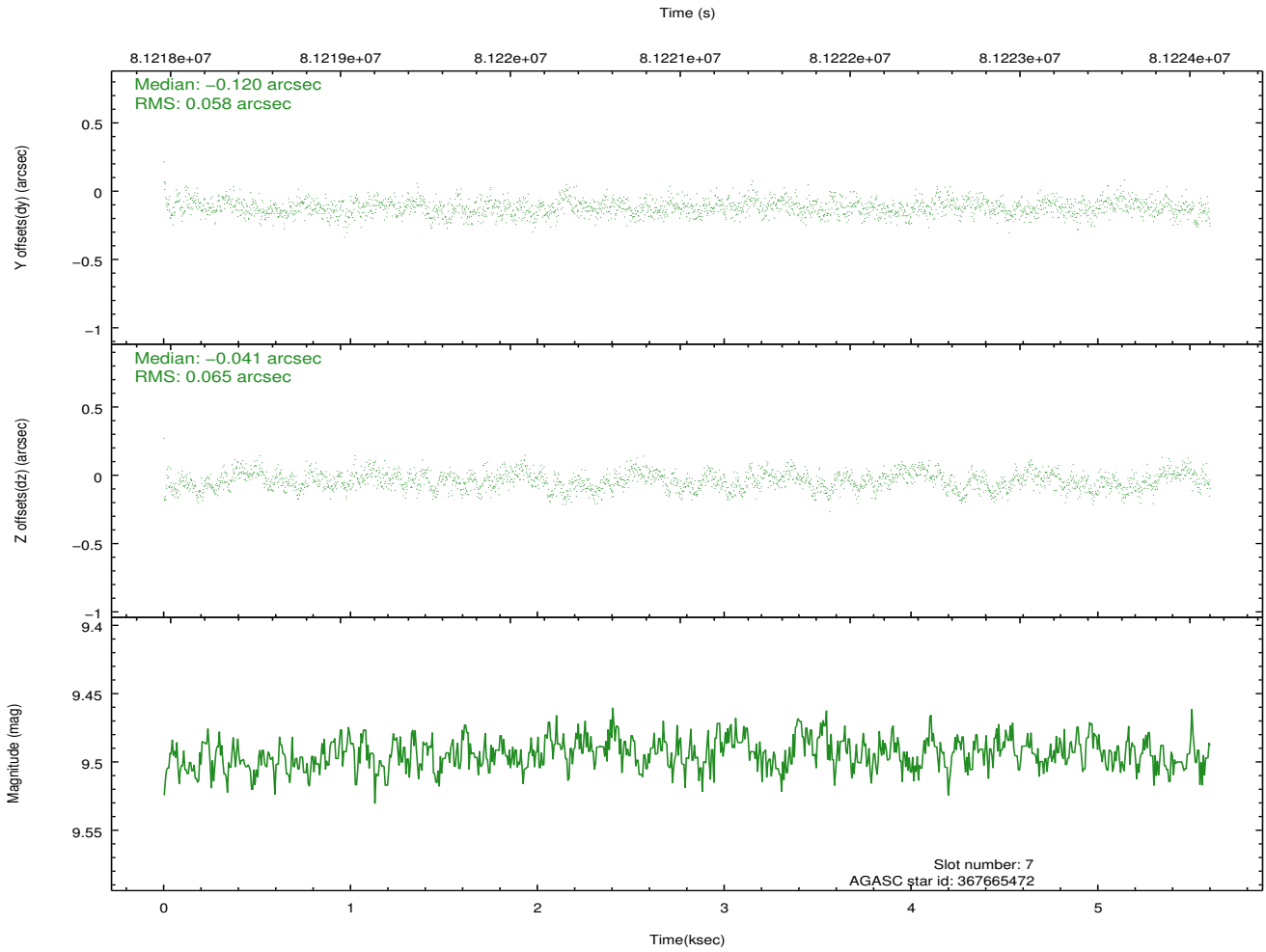
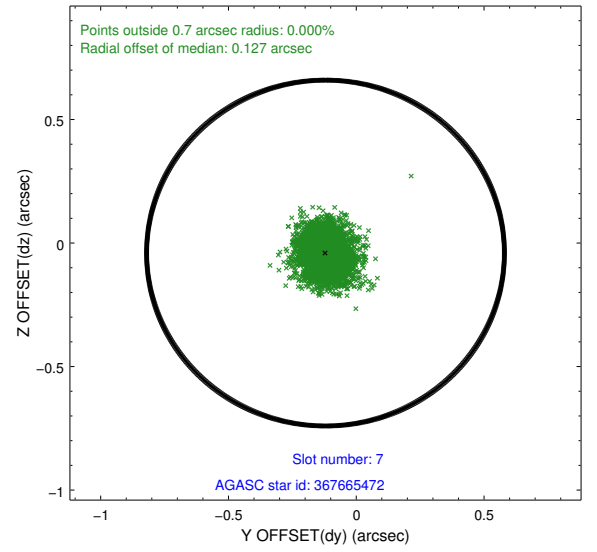
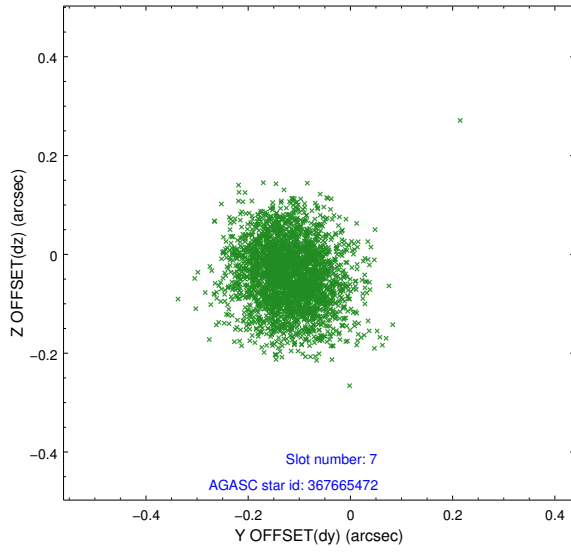
2.4.3 Slot 5



2.4.4 Slot 6

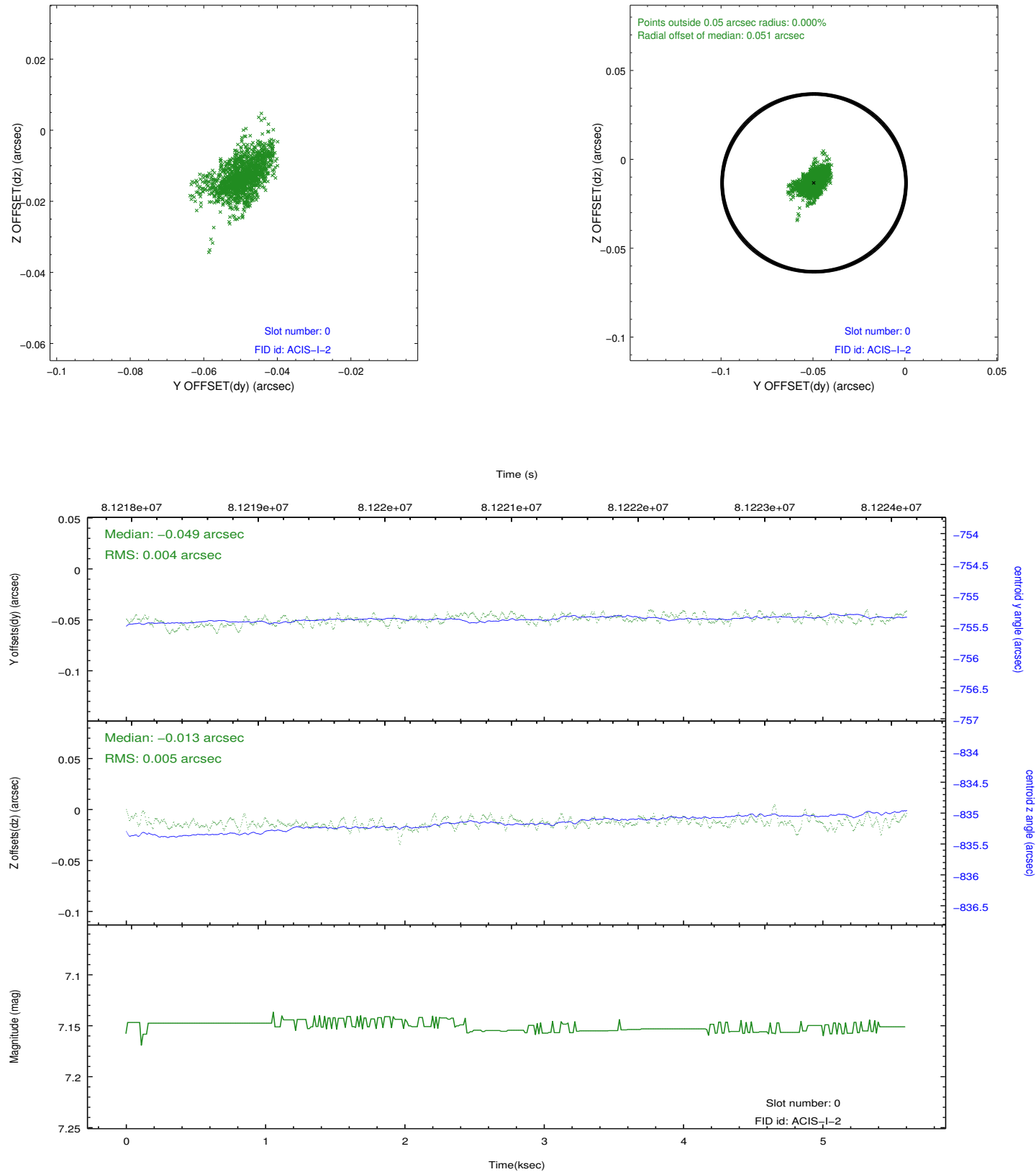


2.4.5 Slot 7

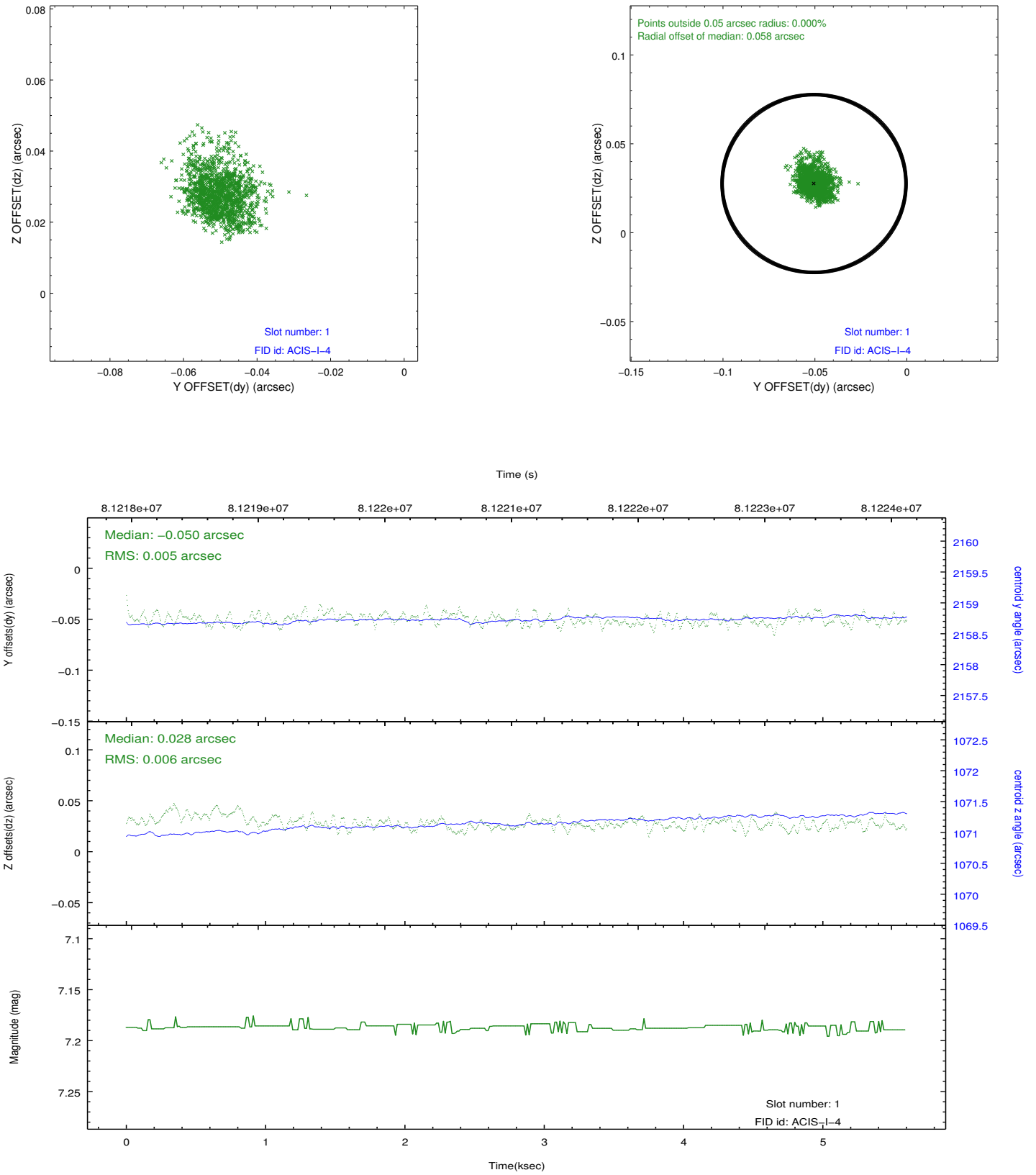


2.5 FID Slots

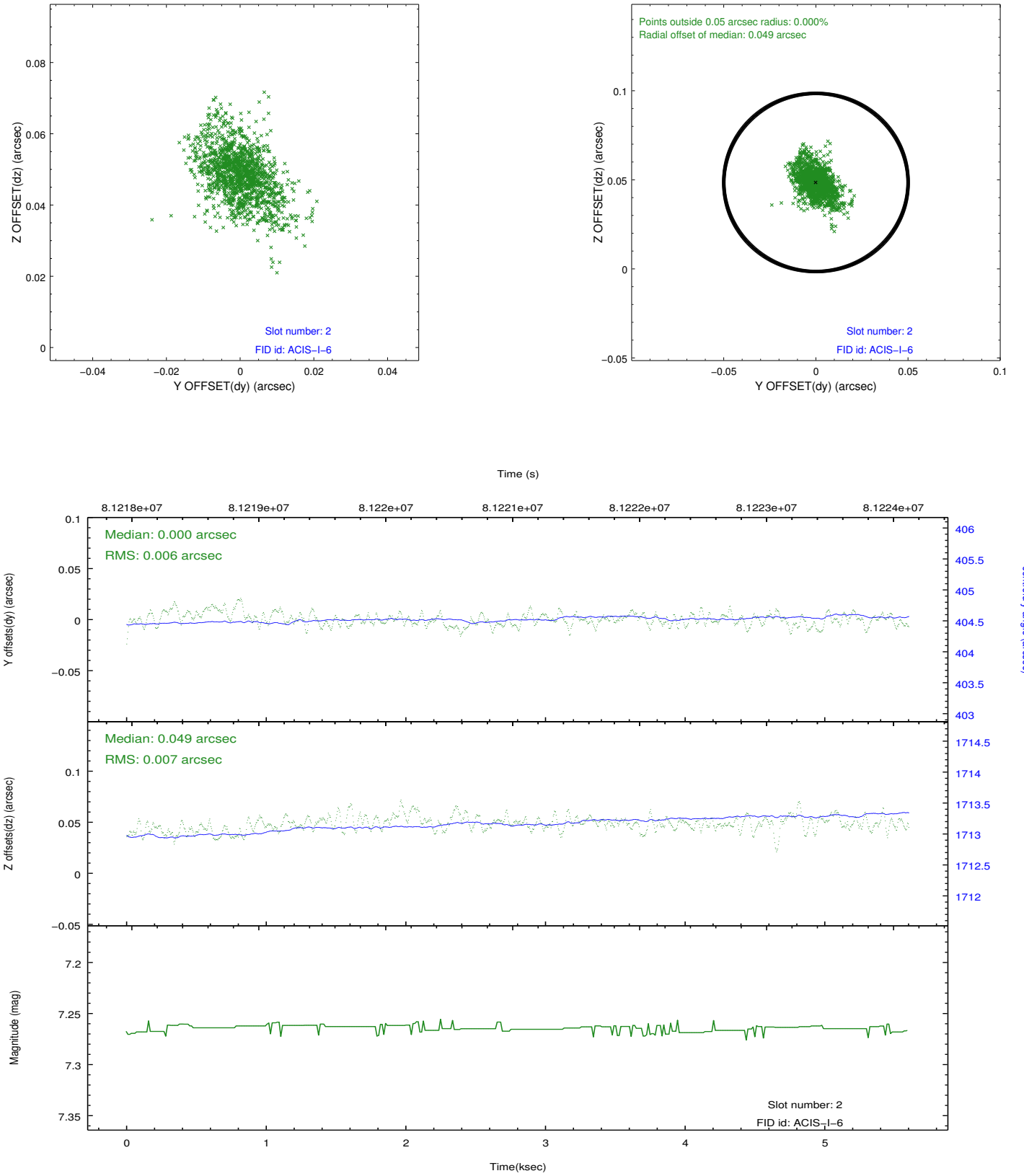
2.5.1 Slot 0



2.5.2 Slot 1



2.5.3 Slot 2



A Summary

A.1 Status

V&V Scientist	Jen Lauer
V&V Date (YYYY-MM-DD)	2012.09.05
V&V Edition	1
V&V Disposition and Status	OK
V&V Charge Time	4.956

A.2 Comments