

V&V Reference Report

L2 ASCDS Version : 8.1.1

Observation 243 - L2 Version 4

Chandra X-Ray Center

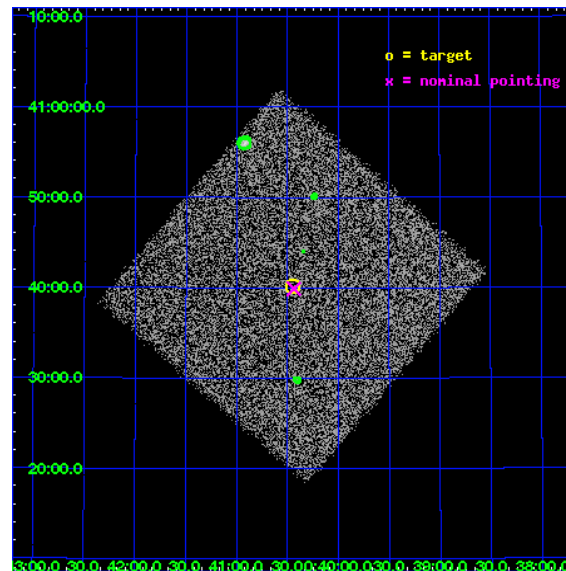
L2 Processing Date : Nov 25 2009

Contents

1	Front	2
2	OBI	3
2.1	OBI	3
2.1.1	Images	3
2.1.2	Parameters	4
2.1.3	Events	4
2.2	Compared Parameters	5
2.3	Aspect	6
2.4	Star Slots	9
2.4.1	Slot 3	9
2.4.2	Slot 4	10
2.4.3	Slot 5	11
2.4.4	Slot 6	12
2.4.5	Slot 7	13
2.5	FID Slots	14
2.5.1	Slot 0	14
2.5.2	Slot 1	15
2.5.3	Slot 2	16
3	Point Sources	17
A	Summary	18
A.1	Status	18
A.2	Comments	18

1 Front

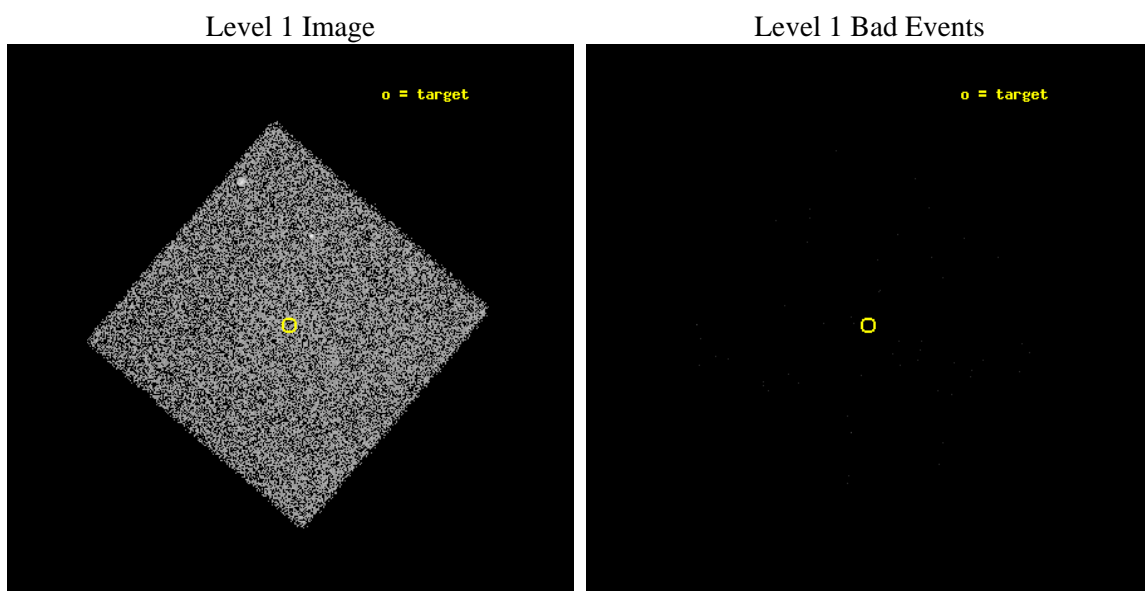
seq_num	600003	Sequence number
obs_id	243	Observation id
title	MONITORING M31	Proposal title
observer	Dr Steve Murray	Principal investigator
object	M31 - South 2	Source name
ra_targ	10.1125	Observer's specified target RA
dec_targ	40.67	Observer's specified target Dec
ra_nom	10.109365238787	Nominal RA
dec_nom	40.664787731158	Nominal Dec
roll_nom	265.6750616299	Nominal Roll
revision	4	Processing version of data
ontime	1163.6312920675	[s]
livetime	1156.5319127287	Ontime multiplied by DTCOR
l2events	33934	Number of level 2 events



2 OBI

2.1 OBI

2.1.1 Images



2.1.2 Parameters

obi_num	0	Obi number	sched_exp_time	1000.000000	Scheduled observation exposure time
ascdsver	8.1.1	Processing system revision	ontime	1163.6312920675	[s]
caldbver	4.1.4	 	l1events	54673	Number of level 1 events
date	2009-11-25T08:06:37	Date and time of file creation			
revision	4	Processing version of data			

2.1.3 Events

Level 1 Events

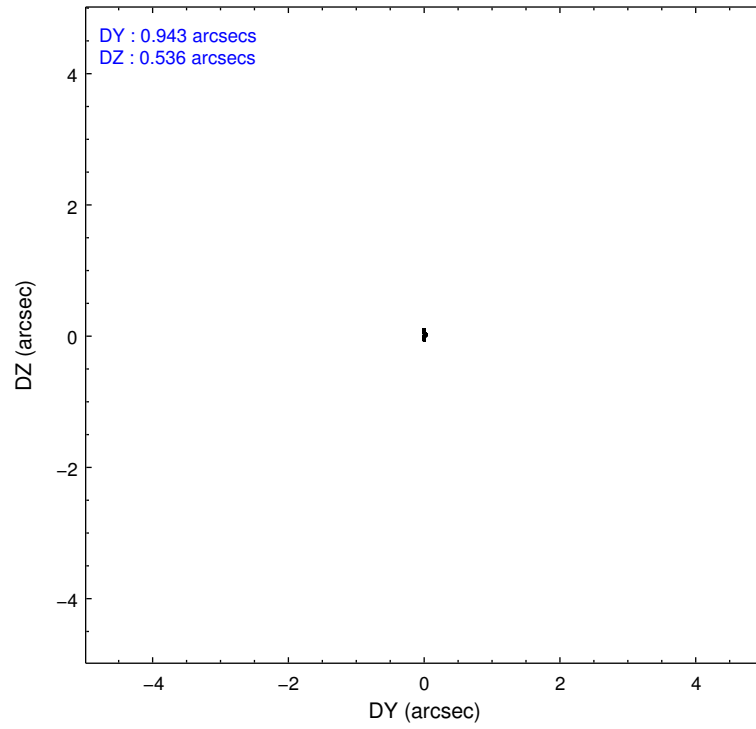
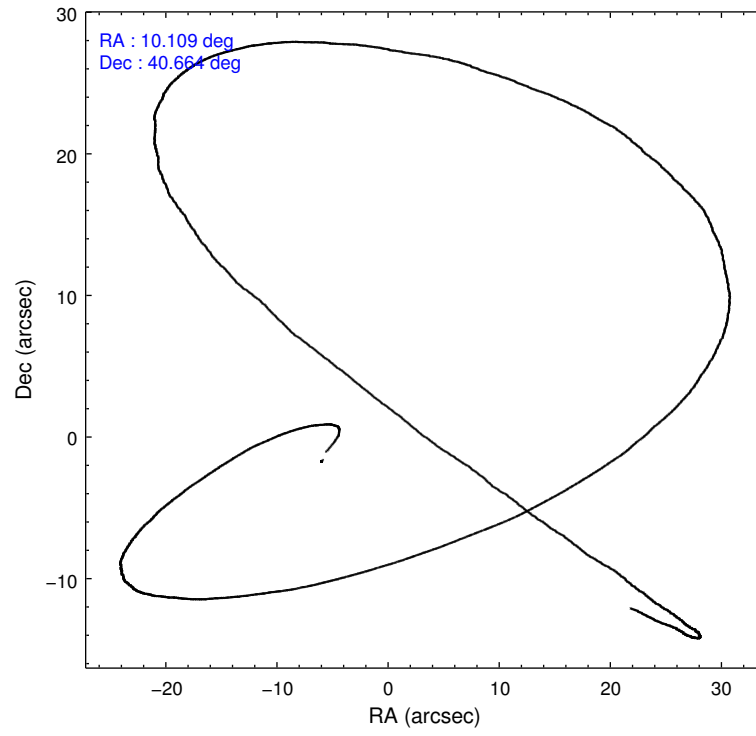
	segment 0
level 1 events	54673
rejected events	2320
rejected %	4%

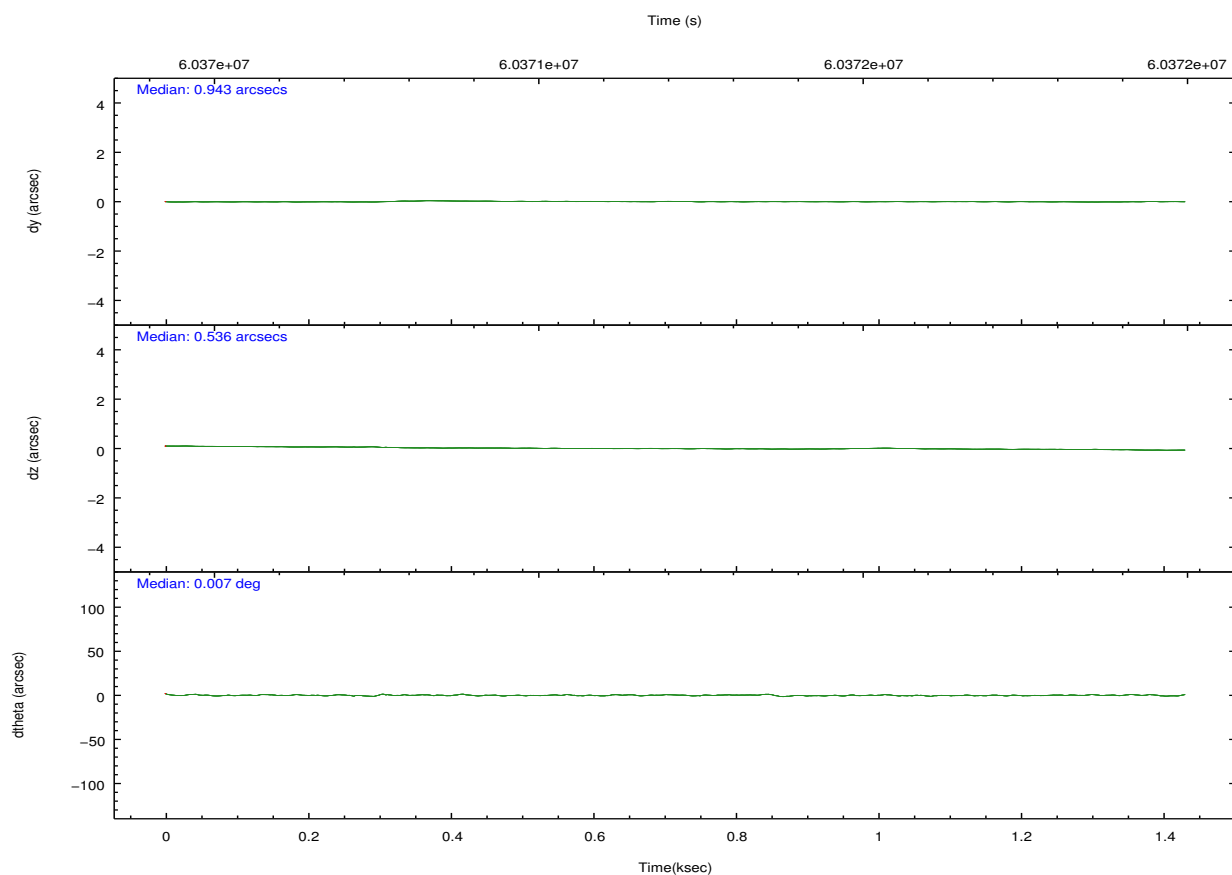
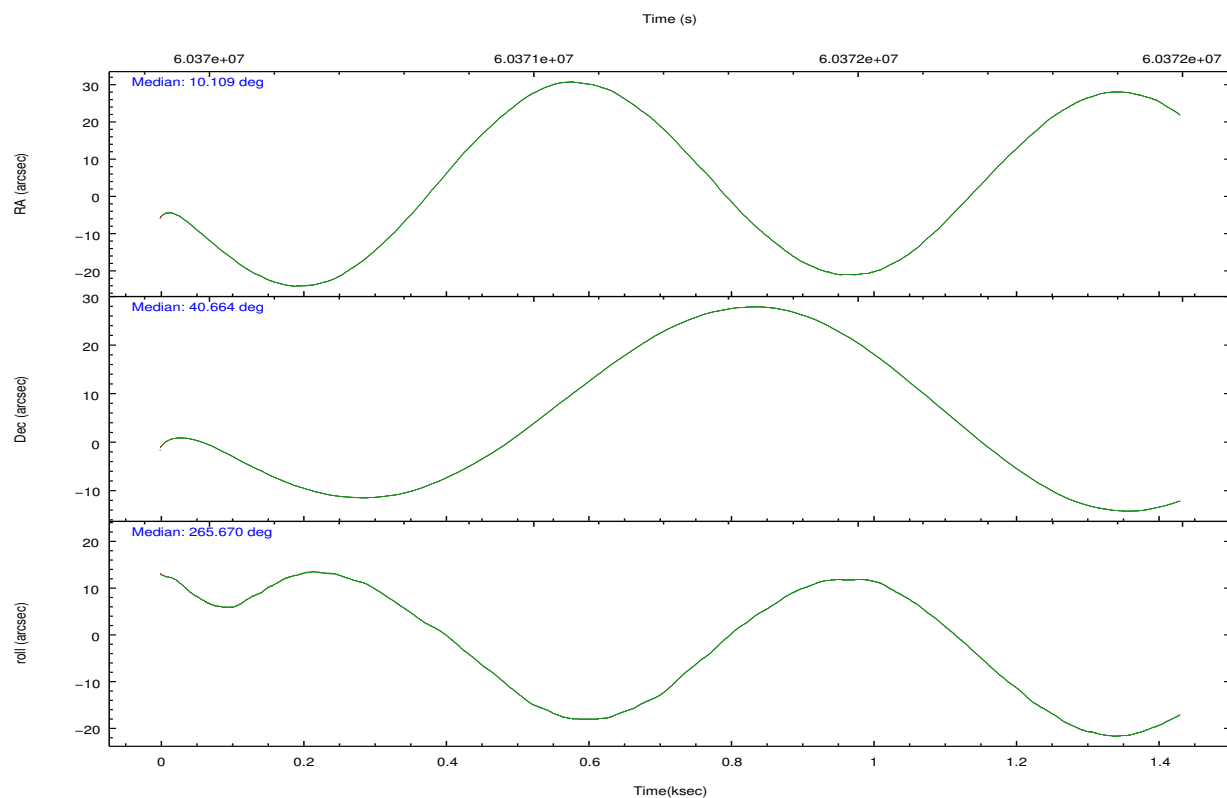
2.2 Compared Parameters

Parameter	Planned	Actual
Instrument	HRC	HRC
Detector	HRC-I	HRC-I
Grating	NONE	NONE
Data mode	OBSERVING	OBSERVING
Observation mode	POINTING	POINTING
Pointing RA	10.093781	10.10936523878653
Pointing Dec	40.690435	40.6647877311575
Pointing Roll	265.780552	265.6750616298957
SIM focus pos (mm)	-1.040293	-1.038866356238299
SIM defocus (mm)	0	0.001426264420575141
SIM translation stage pos (mm)	126.985494	126.9829799899862
SIM translation stage offset (mm)	0	0.002508901615314585
Observation start time	60370925.184000	60369942.525051
Observation start date	1999-11-30T17:41:01	1999-11-30T17:25:42
Observation end time	60371925.184000	60372059.150128
Observation end date	1999-11-30T17:57:41	1999-11-30T18:00:59

Parameter	Planned	Actual
Obspar format version number	6	6
Obspar file type	PREDICTED	ACTUAL
Obspar update status	NONE	UPDATED

2.3 Aspect



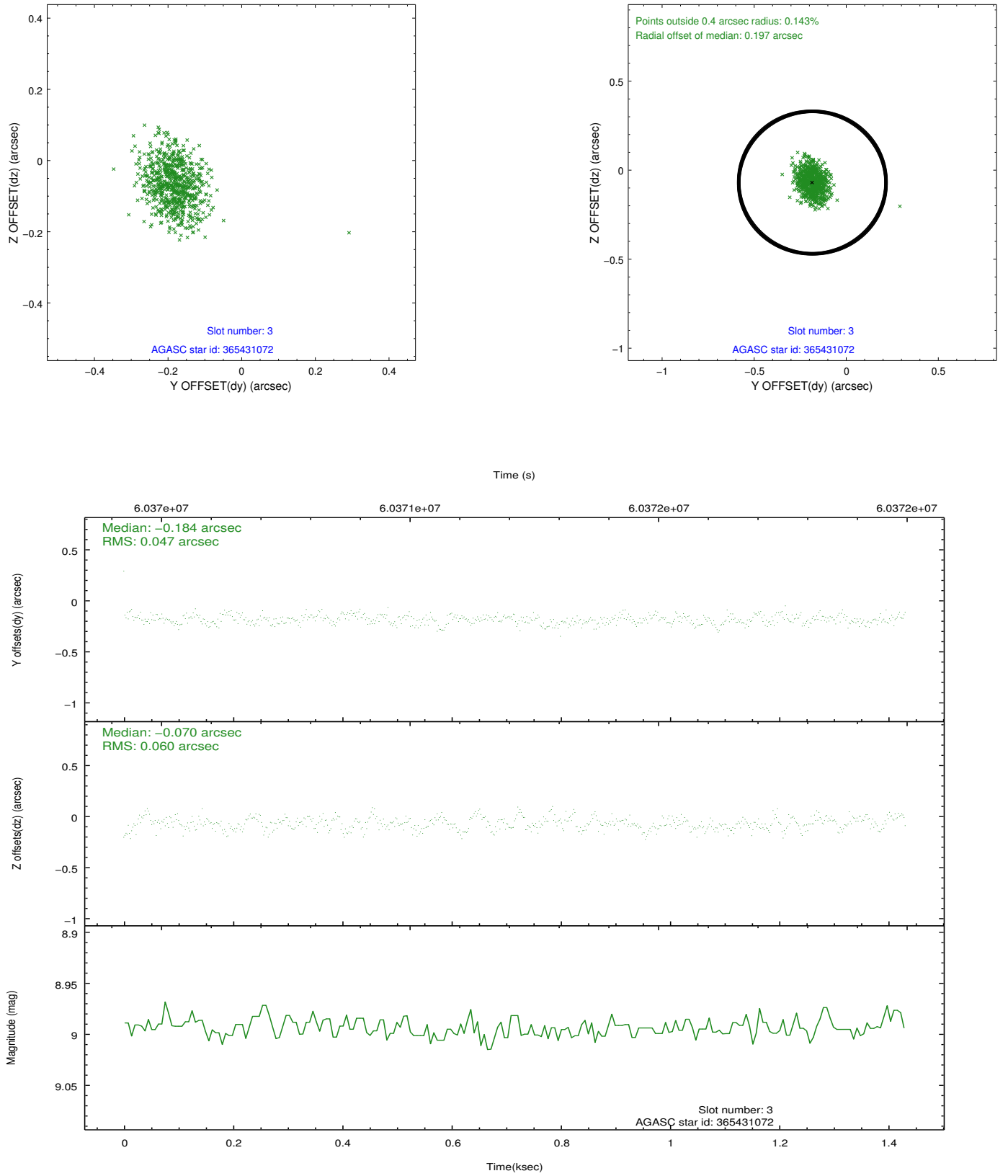


Slot Statistics

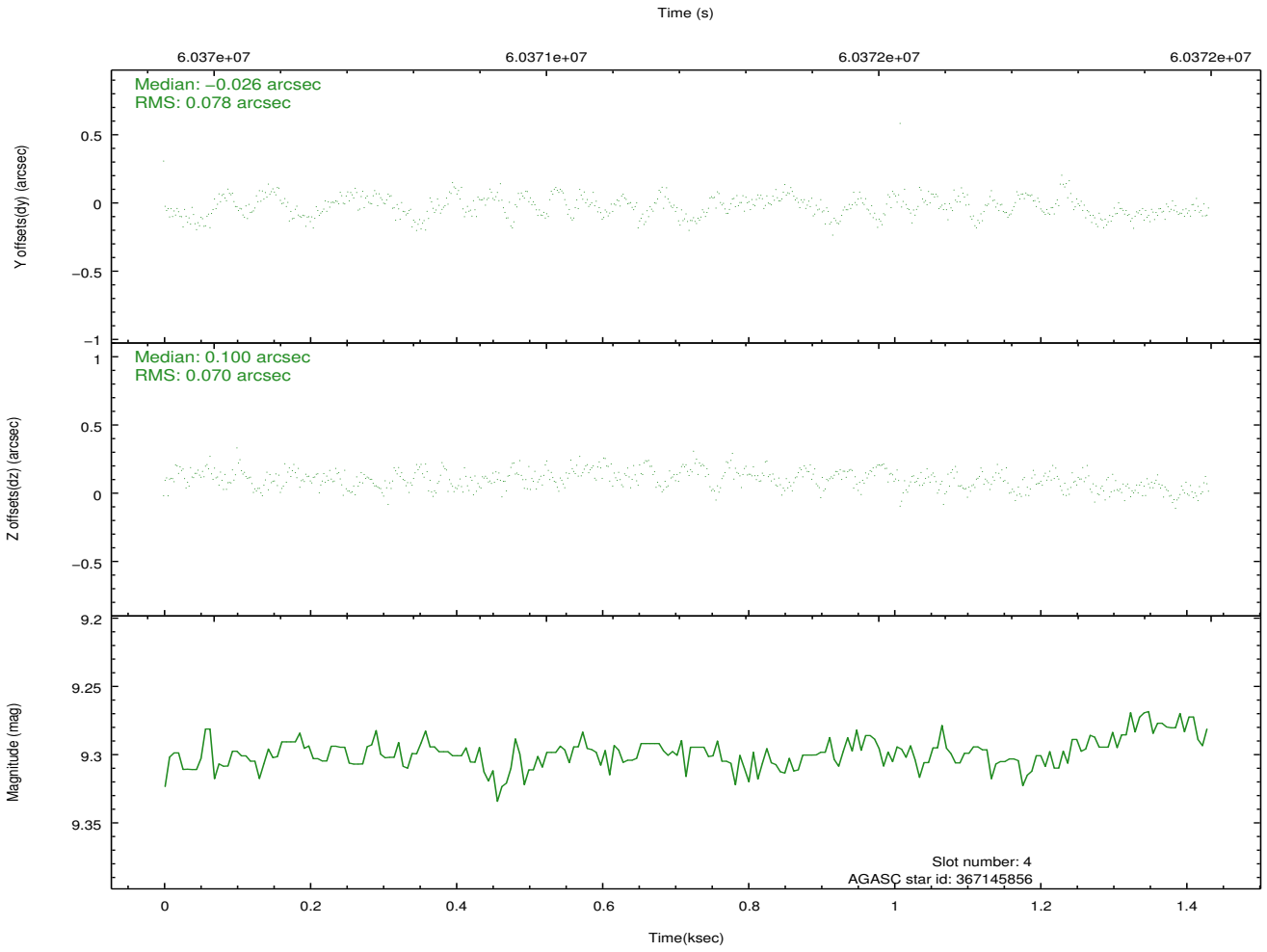
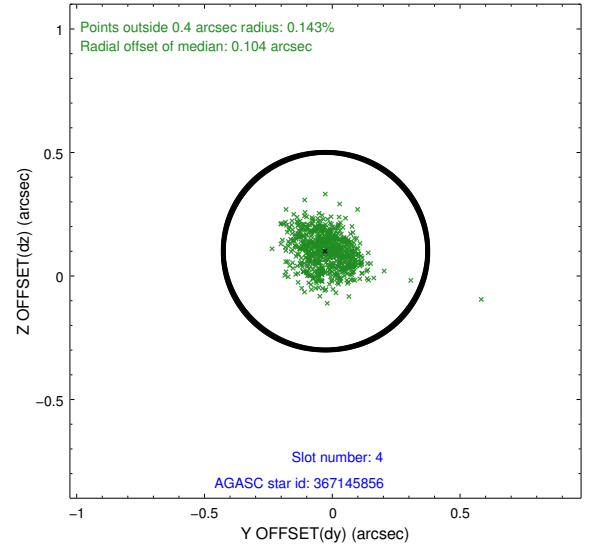
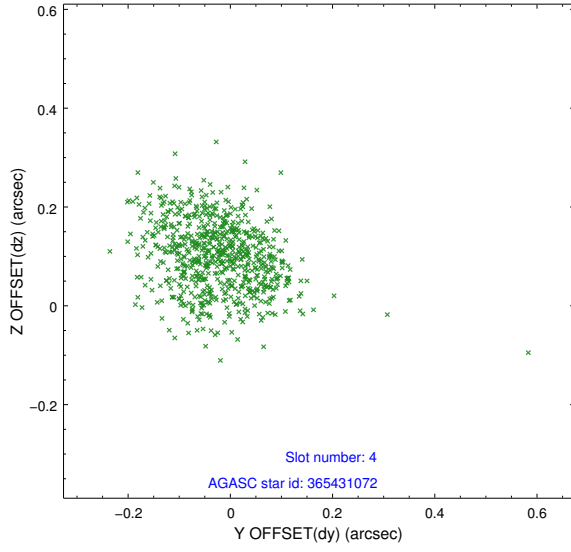
slot	status	id	mag	n_pts	med_dy	med_dz	dr1	dr2	ra	dec	mean_y	mean_z
0	FID	HRC-I-1	6.95	699	-0.001	-0.017	0.006	0.011	0.000000	0.000000	-756.34	-1288.24
1	FID	HRC-I-3	7.04	699	0.056	-0.076	0.007	0.012	0.000000	0.000000	-1185.90	1014.42
2	FID	HRC-I-4	6.98	699	0.059	0.003	0.005	0.009	0.000000	0.000000	1284.77	1015.44
3	GUIDE	365431072	8.99	699	-0.184	-0.070	0.079	0.128	9.376278	41.092224	-1310.69	-2049.22
4	GUIDE	367145856	9.30	699	-0.026	0.100	0.112	0.175	10.744946	40.402085	891.85	1852.87
5	GUIDE	367141456	9.46	699	0.080	0.124	0.106	0.173	10.733182	40.145955	1816.81	1900.94
6	GUIDE	365441752	9.89	699	0.081	-0.074	0.113	0.185	9.751317	40.671127	135.65	-925.49
7	GUIDE	365442120	9.81	697	0.043	-0.092	0.100	0.168	9.743696	40.631177	278.18	-940.24

2.4 Star Slots

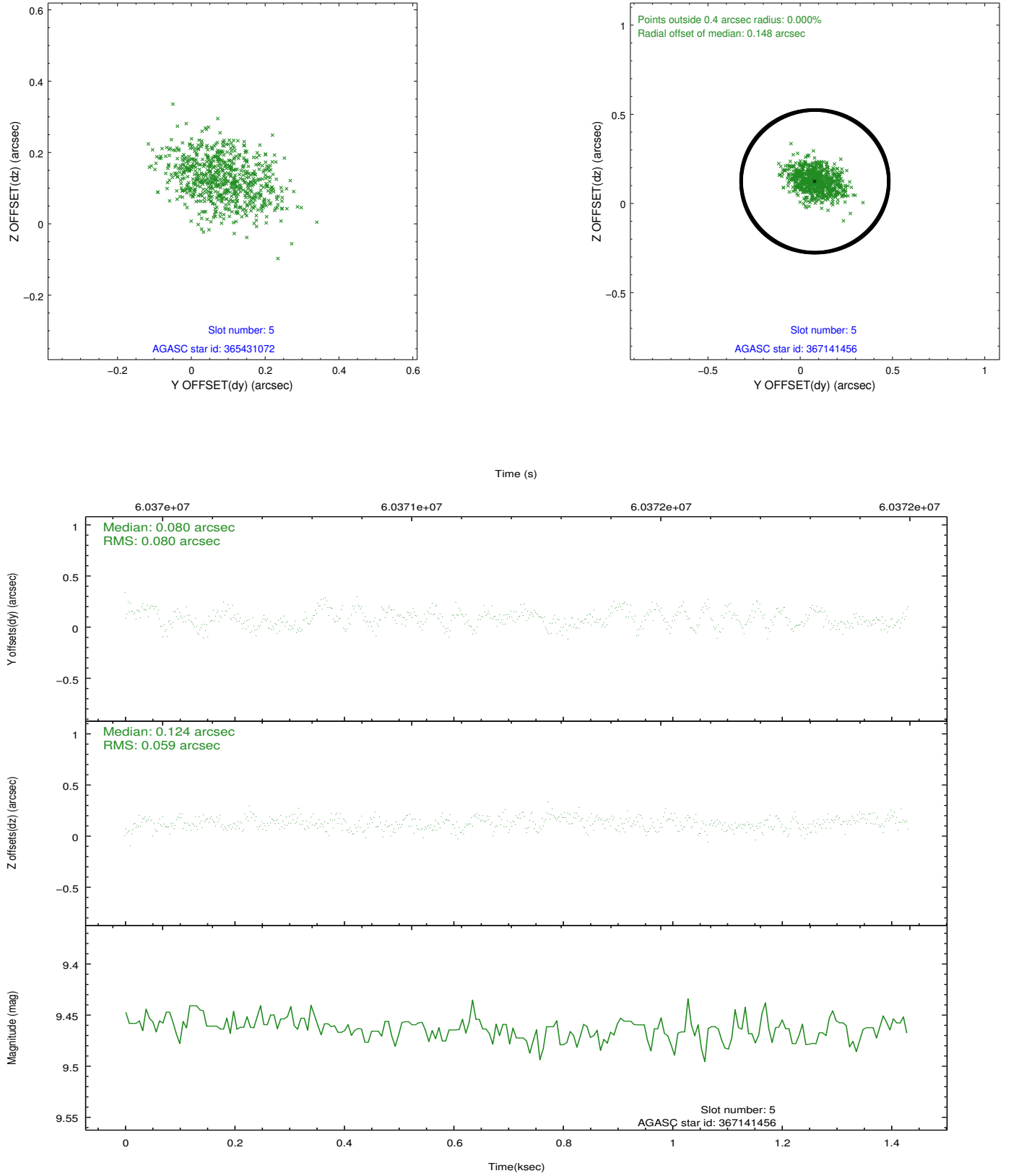
2.4.1 Slot 3



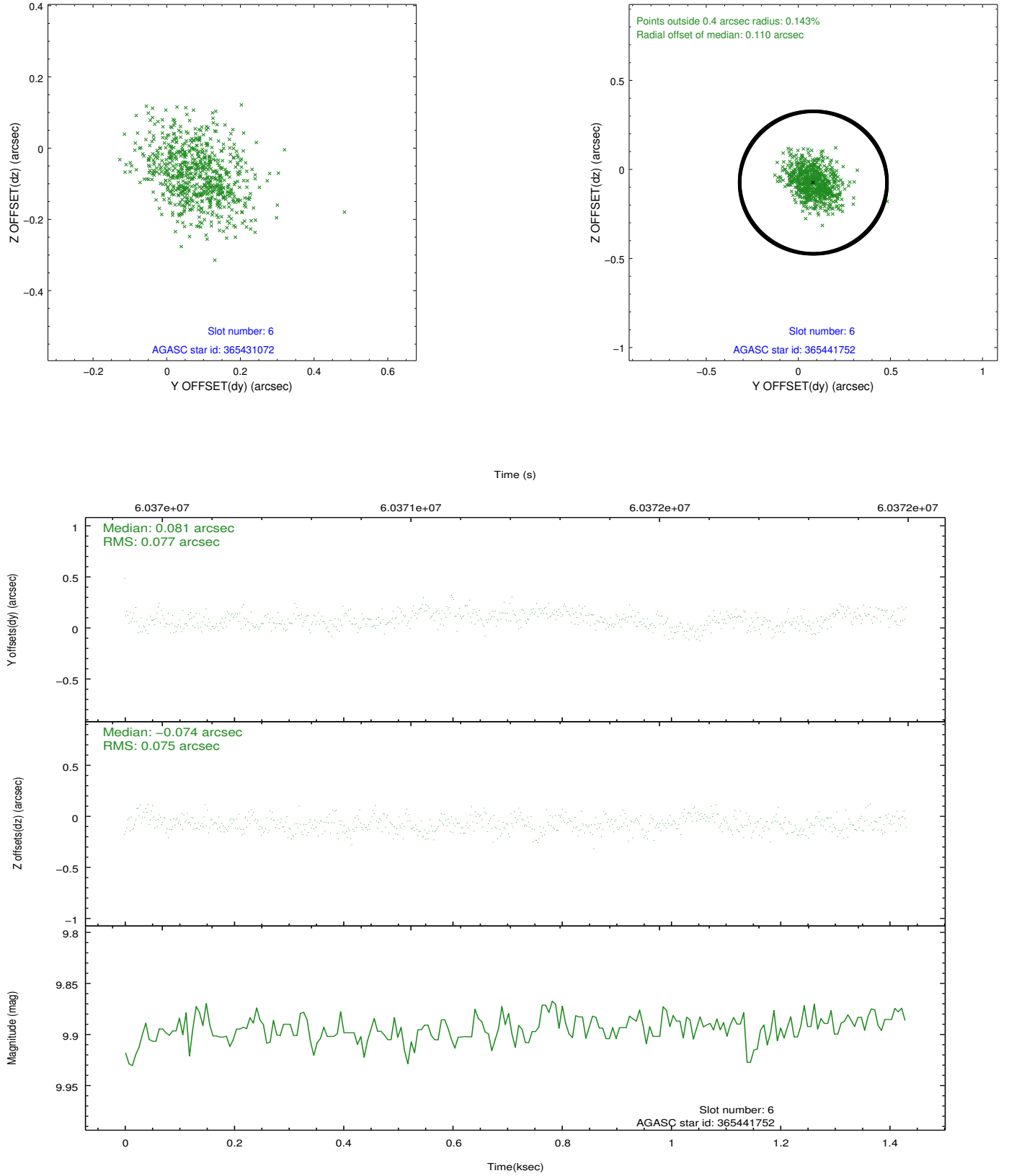
2.4.2 Slot 4



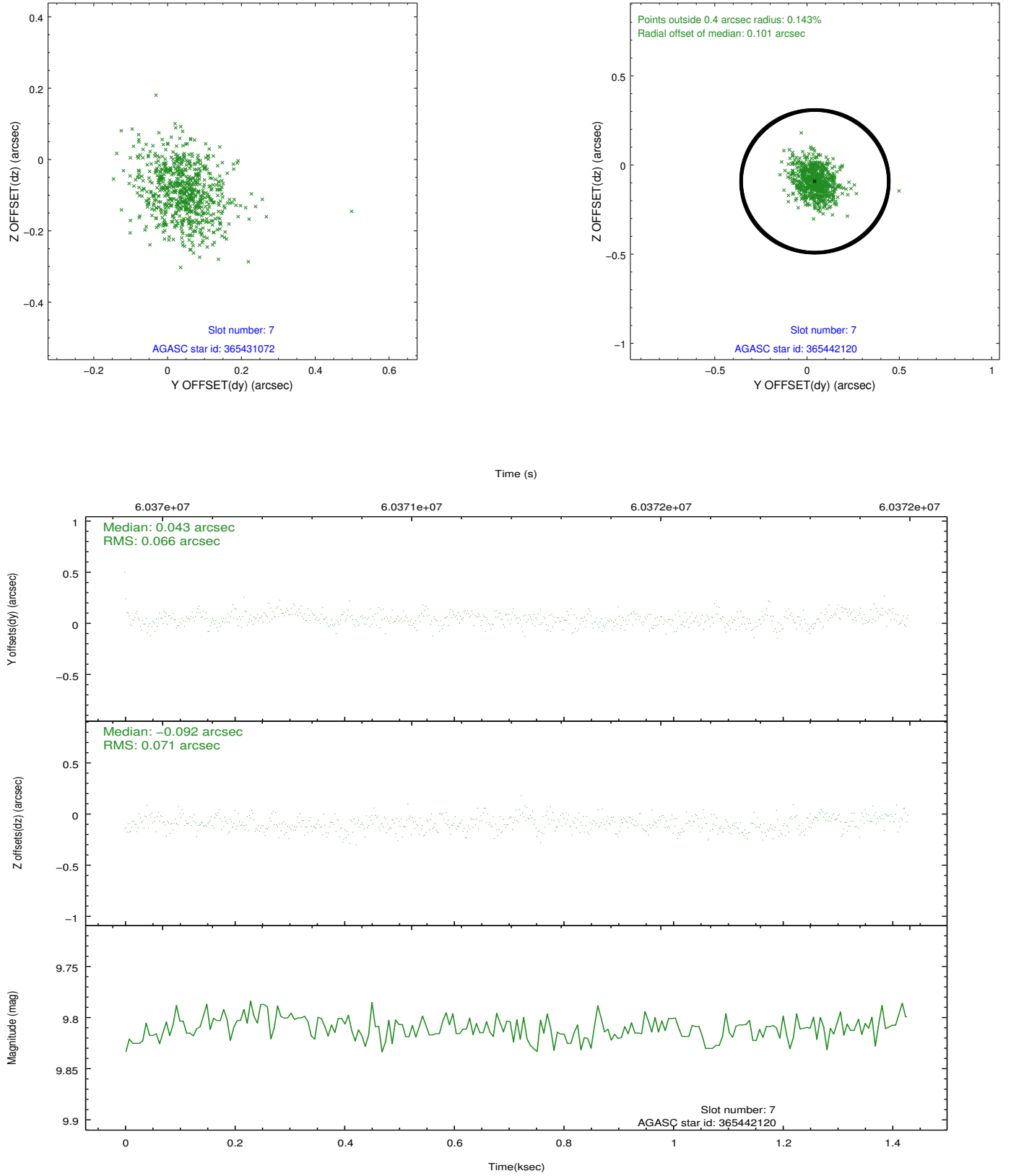
2.4.3 Slot 5



2.4.4 Slot 6

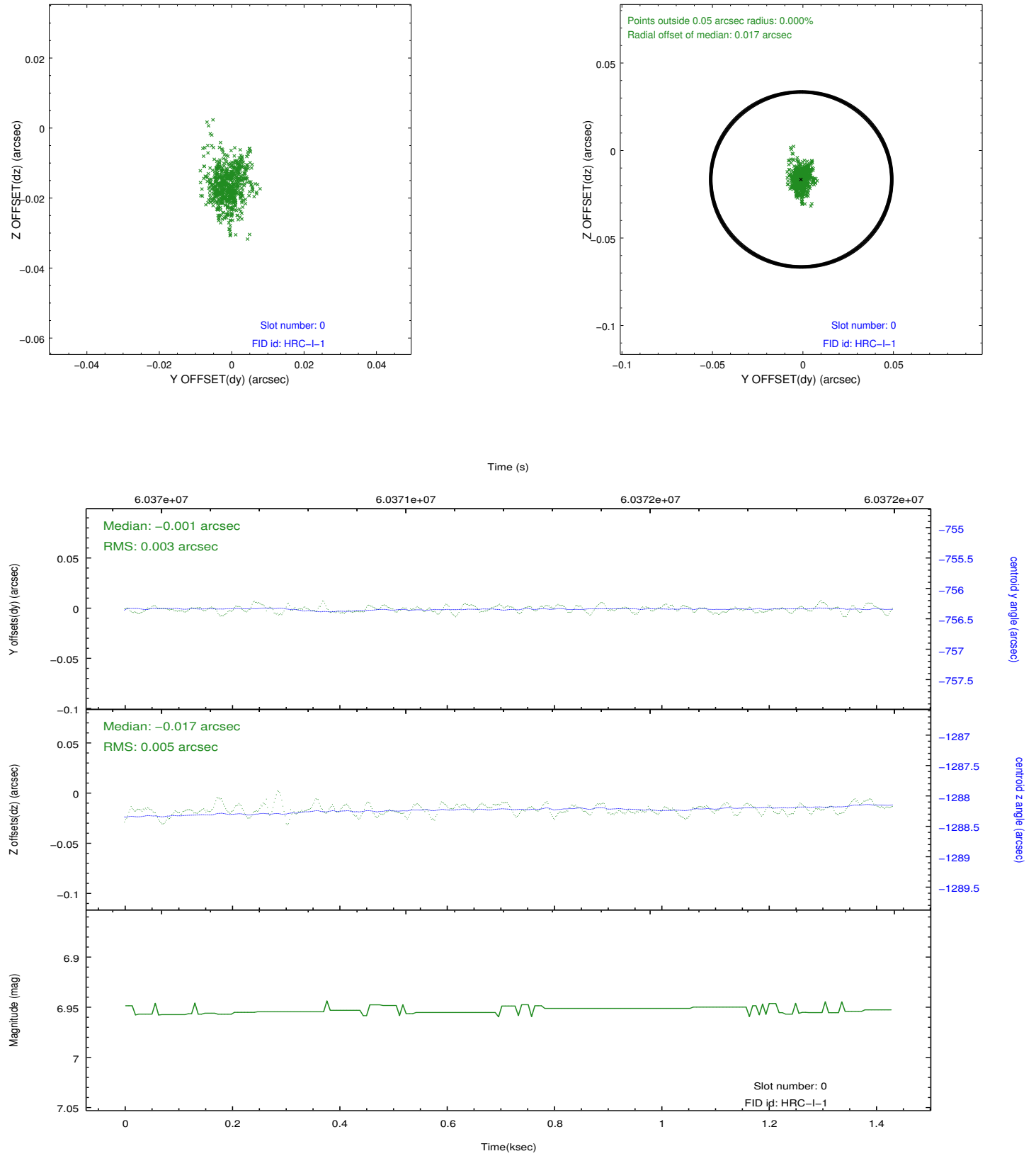


2.4.5 Slot 7

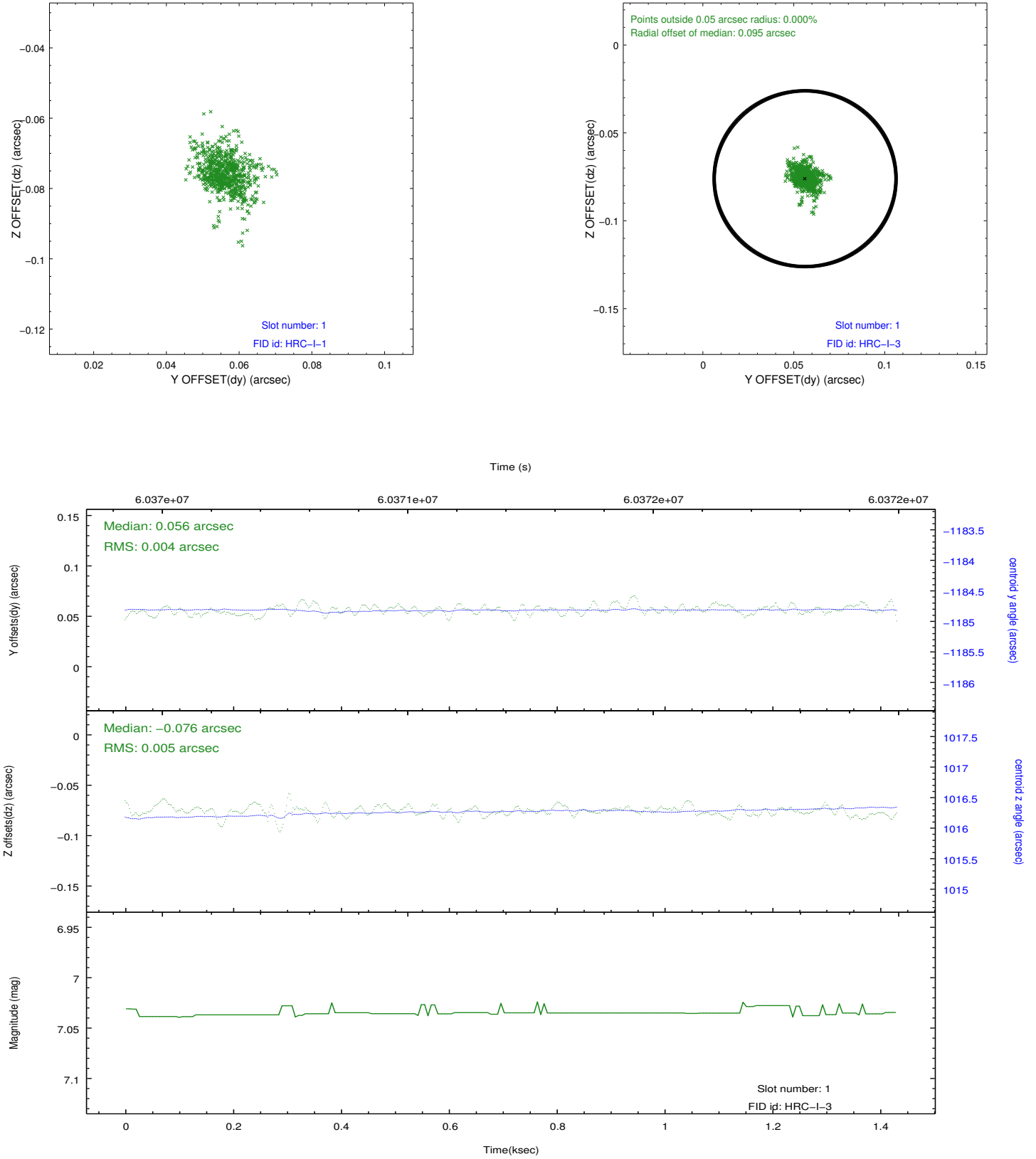


2.5 FID Slots

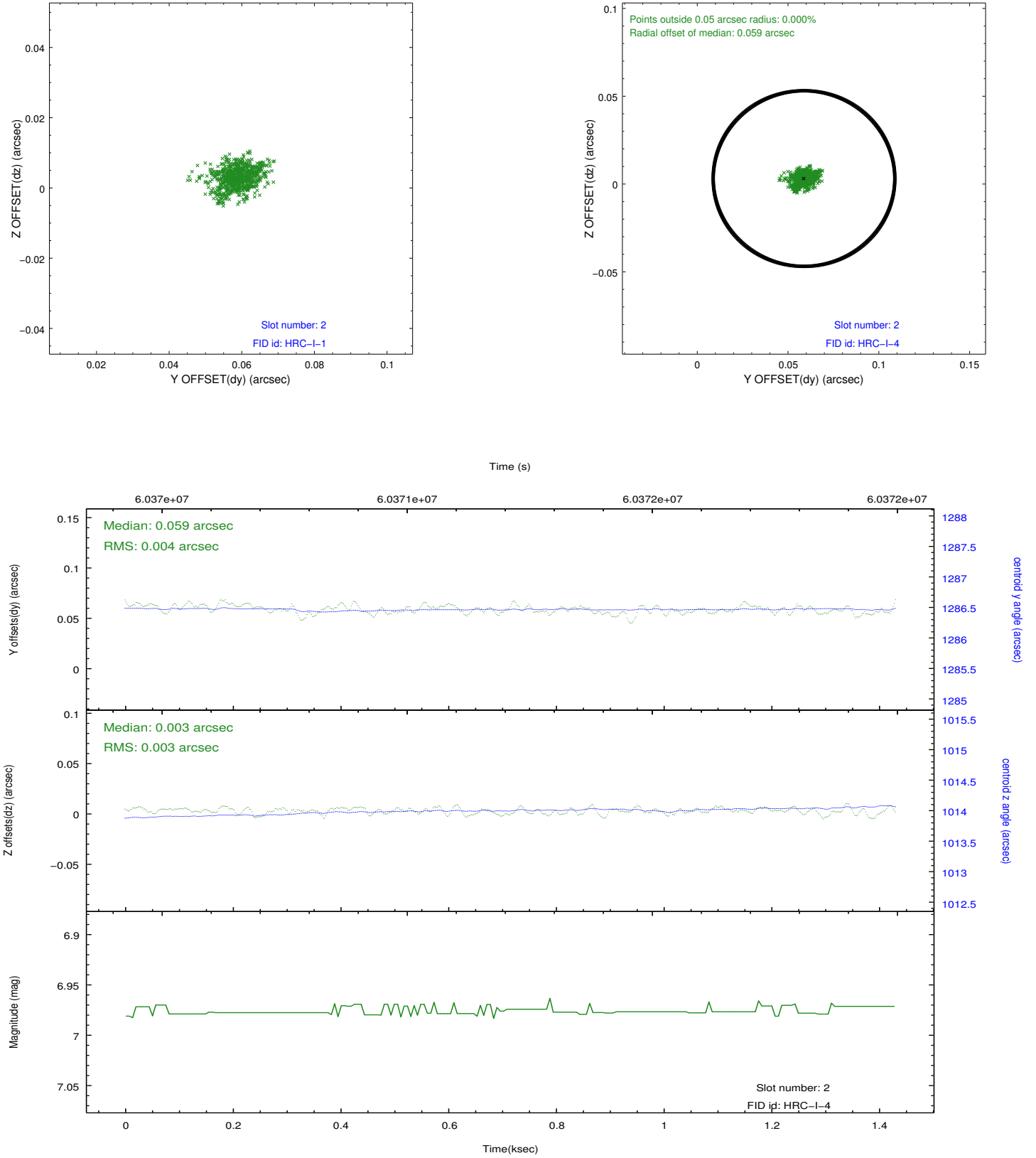
2.5.1 Slot 0



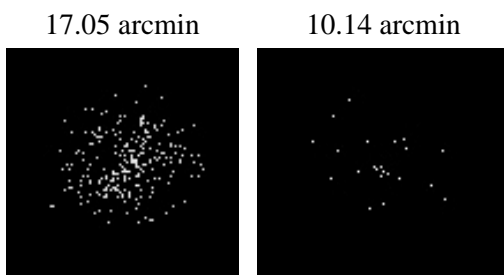
2.5.2 Slot 1



2.5.3 Slot 2



3 Point Sources



A Summary

A.1 Status

V&V Scientist	Joy Nichols
V&V Date (YYYY-MM-DD)	2009.11.25
V&V Edition	1
V&V Disposition and Status	OK
V&V Charge Time	1.163

A.2 Comments