

V&V Reference Report

L2 ASCDS Version : 7.6.10

Observation 748 - L2 Version 001
Chandra X-Ray Center

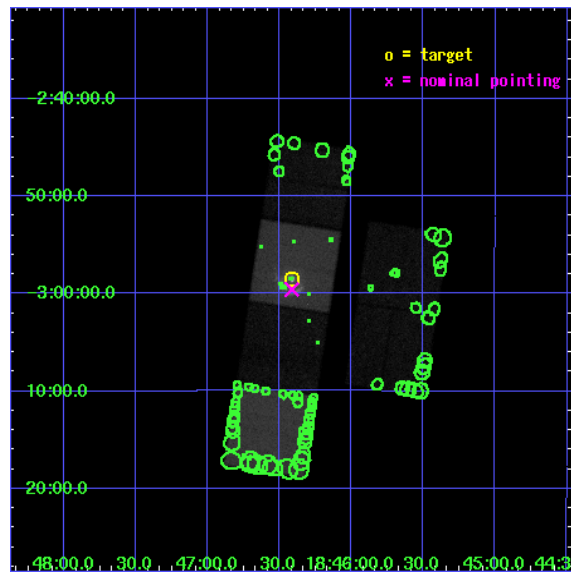
L2 Processing Date : Jun 12 2007

Contents

1	Front	2
2	OBI	3
2.1	OBI	3
2.1.1	Images	3
2.1.2	Bias	3
2.1.3	Parameters	4
2.1.4	Events	4
2.2	Compared Parameters	5
2.3	Aspect	6
2.4	Star Slots	9
2.4.1	Slot 3	9
2.4.2	Slot 5	10
2.4.3	Slot 6	11
2.4.4	Slot 7	12
2.5	FID Slots	13
2.5.1	Slot 0	13
2.5.2	Slot 1	14
2.5.3	Slot 2	15
3	Point Sources	16
A	Summary	17
A.1	Status	17
A.2	Comments	17

1 Front

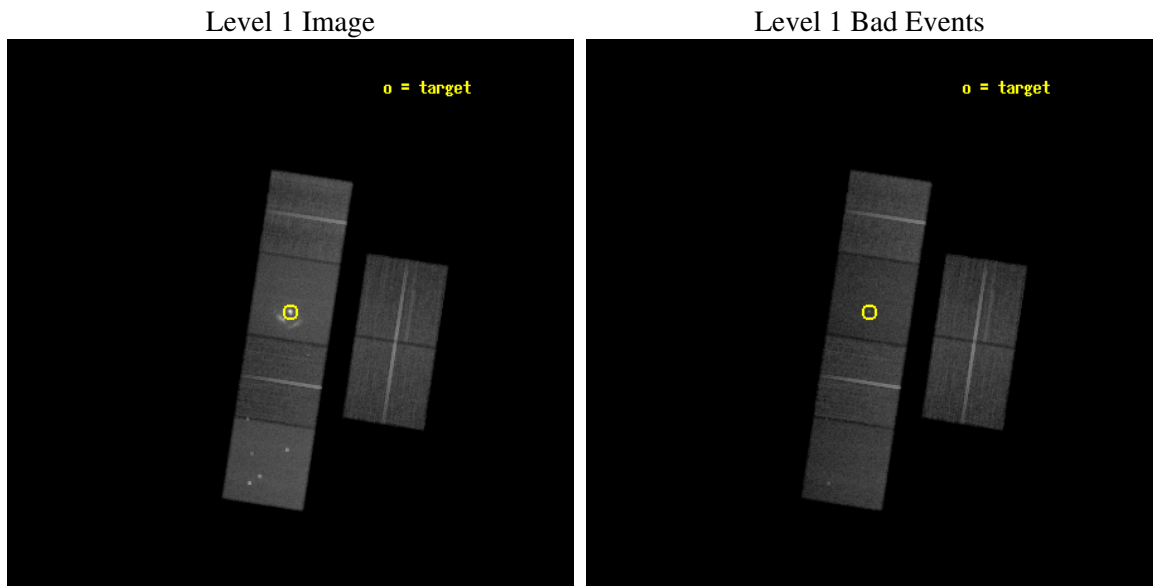
seq_num	500044
obs_id	748
title	G29.7-0.3: A SUPERNOVA REMNANT LIKE IT OTTA BE
observer	Prof. David Helfand
object	G29.7-0.3
dtcycle	0
cycle	P
ra_targ	281.602917
dec_targ	-2.976111
ra_nom	281.60366679378
dec_nom	-2.9929187036513
roll_nom	278.71371330235
revision	4
ontime	37756.800035164
livetime	37278.700698703
ontime2	37756.142500877
ontime3	37756.800035164
ontime5	37756.800035164
ontime6	37753.559074923
ontime7	37756.800035164
ontime8	37756.800035164
l2events	450764



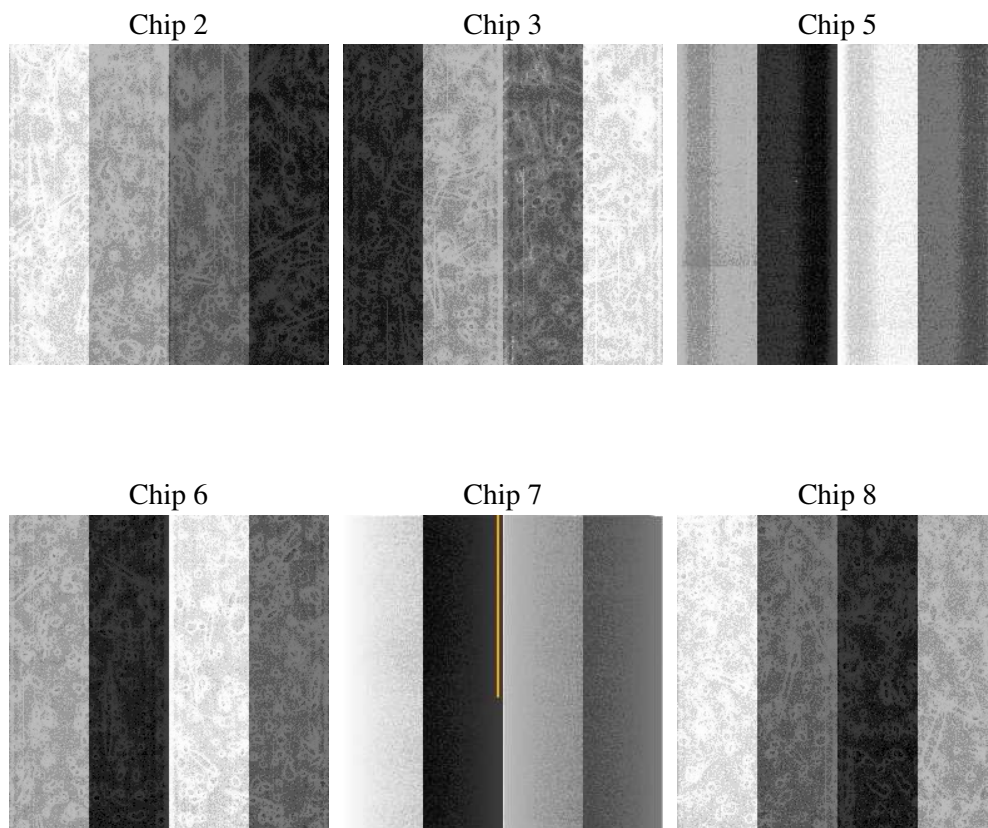
2 OBI

2.1 OBI

2.1.1 Images



2.1.2 Bias



2.1.3 Parameters

obi_num	1
ascdsver	7.6.10
caldsver	3.4.0
date	2007-06-12T16:02:17
revision	4

sched_exp_time	38000.000000
ontime	37756.800035164
ontime2	37756.142500877
ontime3	37756.800035164
ontime5	37756.800035164
ontime6	37753.559074923
ontime7	37756.800035164
ontime8	37756.800035164
l1events	1757871

2.1.4 Events

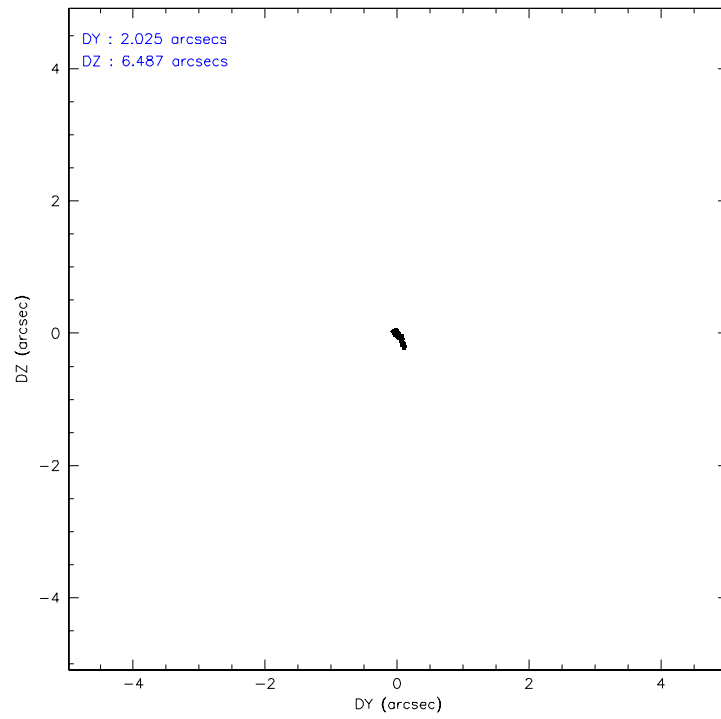
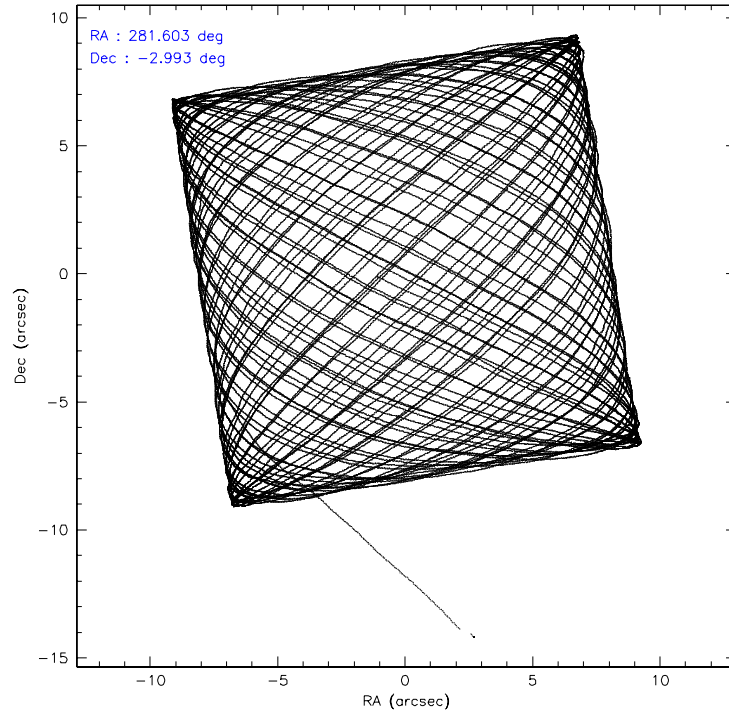
	ccd 2	ccd 3	ccd 5	ccd 6	ccd 7	ccd 8
level 1 events	249757	242683	338177	248380	369540	309334
rejected events	220636	213959	175759	217389	172185	244577
rejected %	88%	88%	51%	87%	46%	79%

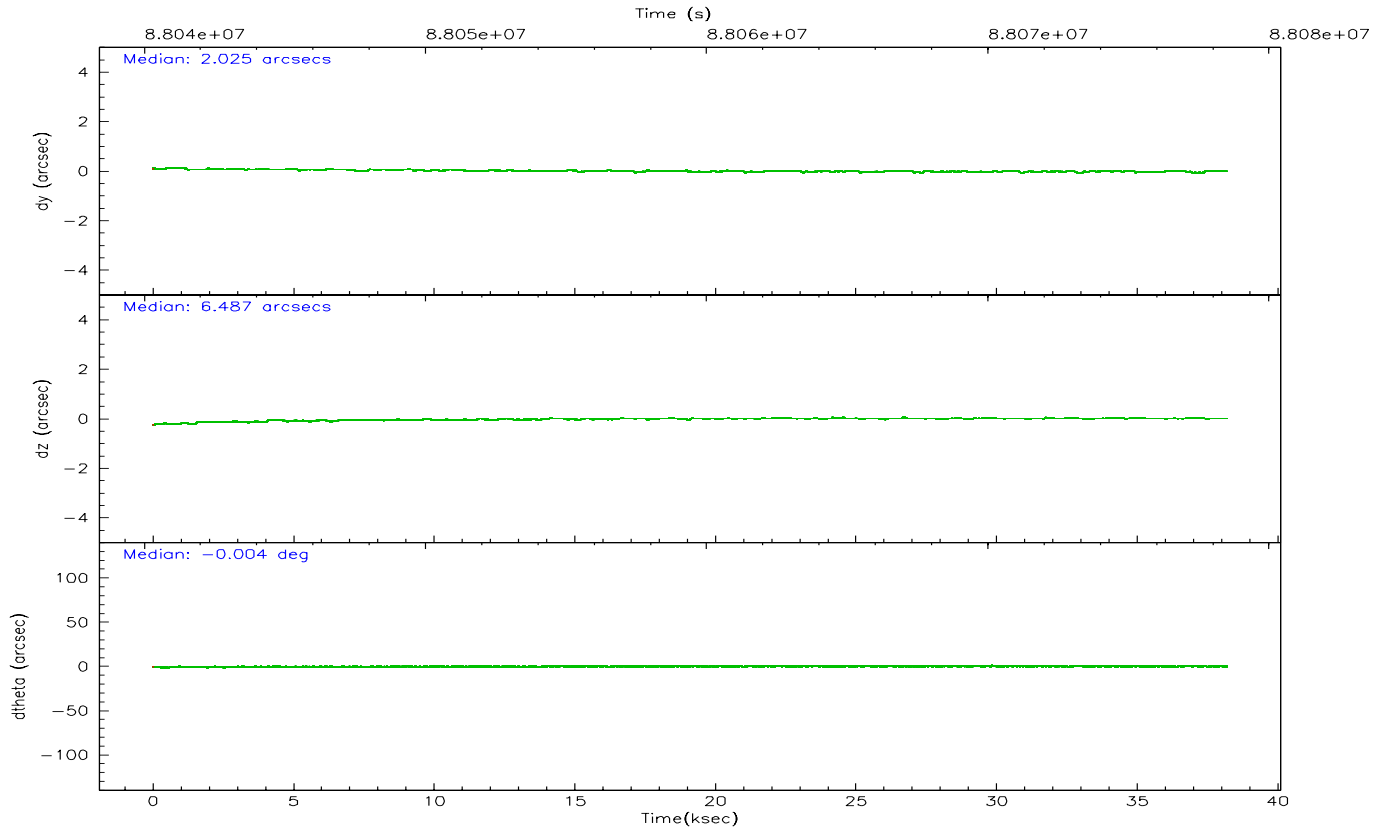
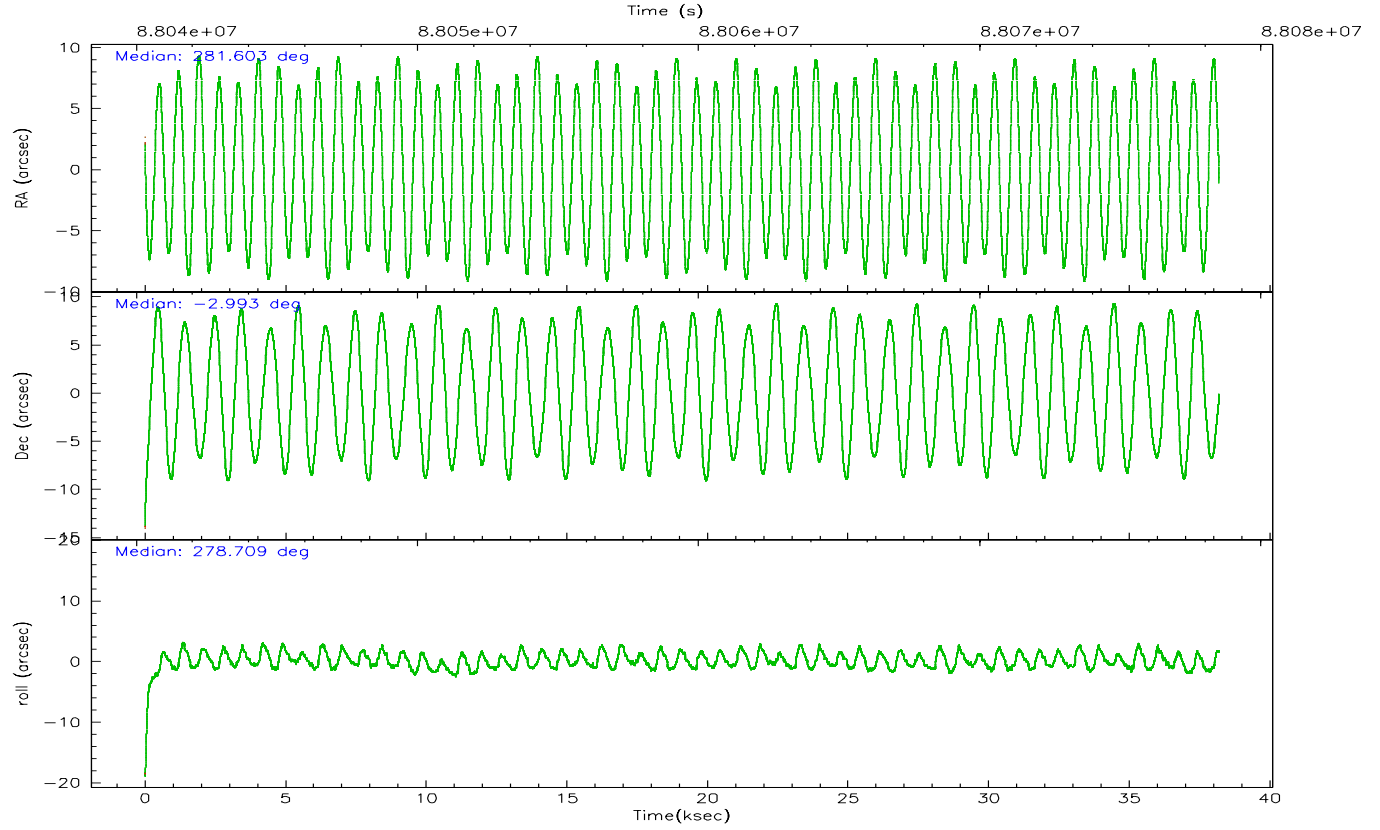
	ccd 2	ccd 3	ccd 5	ccd 6	ccd 7	ccd 8
grade 0 events	13144	13193	21328	13862	27070	22056
	5%	5%	6%	5%	7%	7%
grade 1 events	104	118	881	108	349	187
	0%	0%	0%	0%	0%	0%
grade 2 events	5864	5484	45515	5826	42589	13468
	2%	2%	13%	2%	11%	4%
grade 3 events	2680	2688	7627	2854	19433	6957
	1%	1%	2%	1%	5%	2%
grade 4 events	2592	2667	7409	2904	19281	6387
	1%	1%	2%	1%	5%	2%
grade 5 events	7964	8588	25000	9541	28742	12012
	3%	3%	7%	3%	7%	3%
grade 6 events	4841	4693	80565	5549	88993	15894
	1%	1%	23%	2%	24%	5%
grade 7 events	212568	205252	149852	207736	143083	232373
	85%	84%	44%	83%	38%	75%

2.2 Compared Parameters

Parameter	Planned	Actual	Parameter	Planned	Actual
Instrument	ACIS	ACIS	Obspar format version number	6	6
Detector	ACIS-235678	ACIS-235678	Obspar file type	PREDICTED	ACTUAL
Grating	NONE	NONE	Obspar update status	NONE	UPDATED
Data mode	FAINT	FAINT	Number of optional ACIS chips dropped	0	0
Observation mode	POINTING	POINTING	On-chip summing requested	N	N
Pointing RA	281.586388	281.6036667937847	Subarray requested	NONE	NONE
Pointing Dec	-2.971682	-2.992918703651328	Alternating exposures requested	N	N
Pointing Roll	278.556189	278.7137133023548	Primary exposure time	3.200000	3.2
SIM focus pos (mm)	-0.684267	-0.6828225247311905			
SIM defocus (mm)	0	0.001444936568705701			
SIM translation stage pos (mm)	-190.132523	-190.1400660498719			
SIM translation stage offset (mm)	0	0.00754346686406393			
Observation start time	88040512.184000	88039834.997927			
Observation start date	2000-10-15T23:40:48	2000-10-15T23:30:34			
Observation end time	88078512.184000	88079672.136932			
Observation end date	2000-10-16T10:14:08	2000-10-16T10:34:32			
Read mode	TIMED	TIMED			

2.3 Aspect



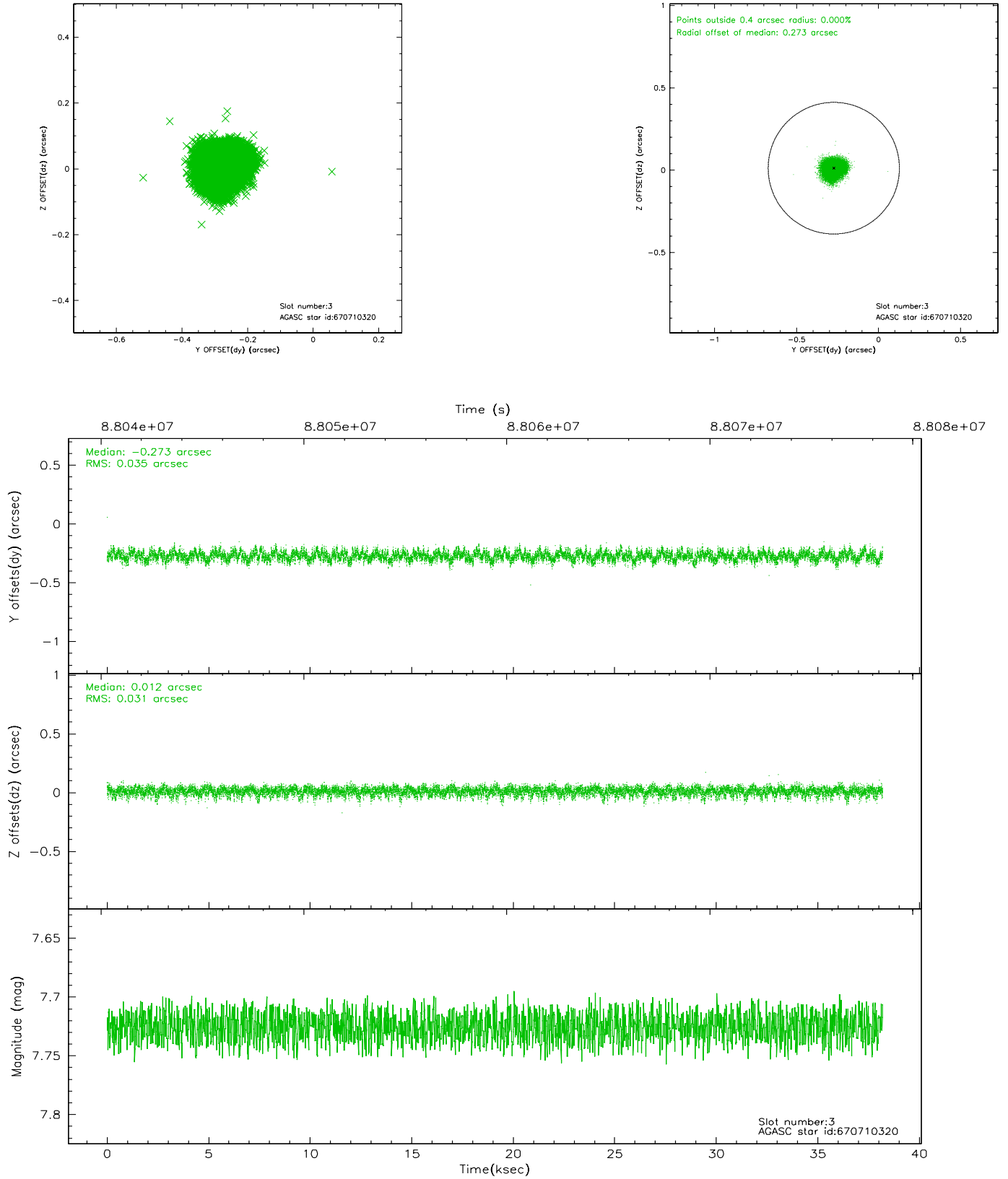


Slot Statistics

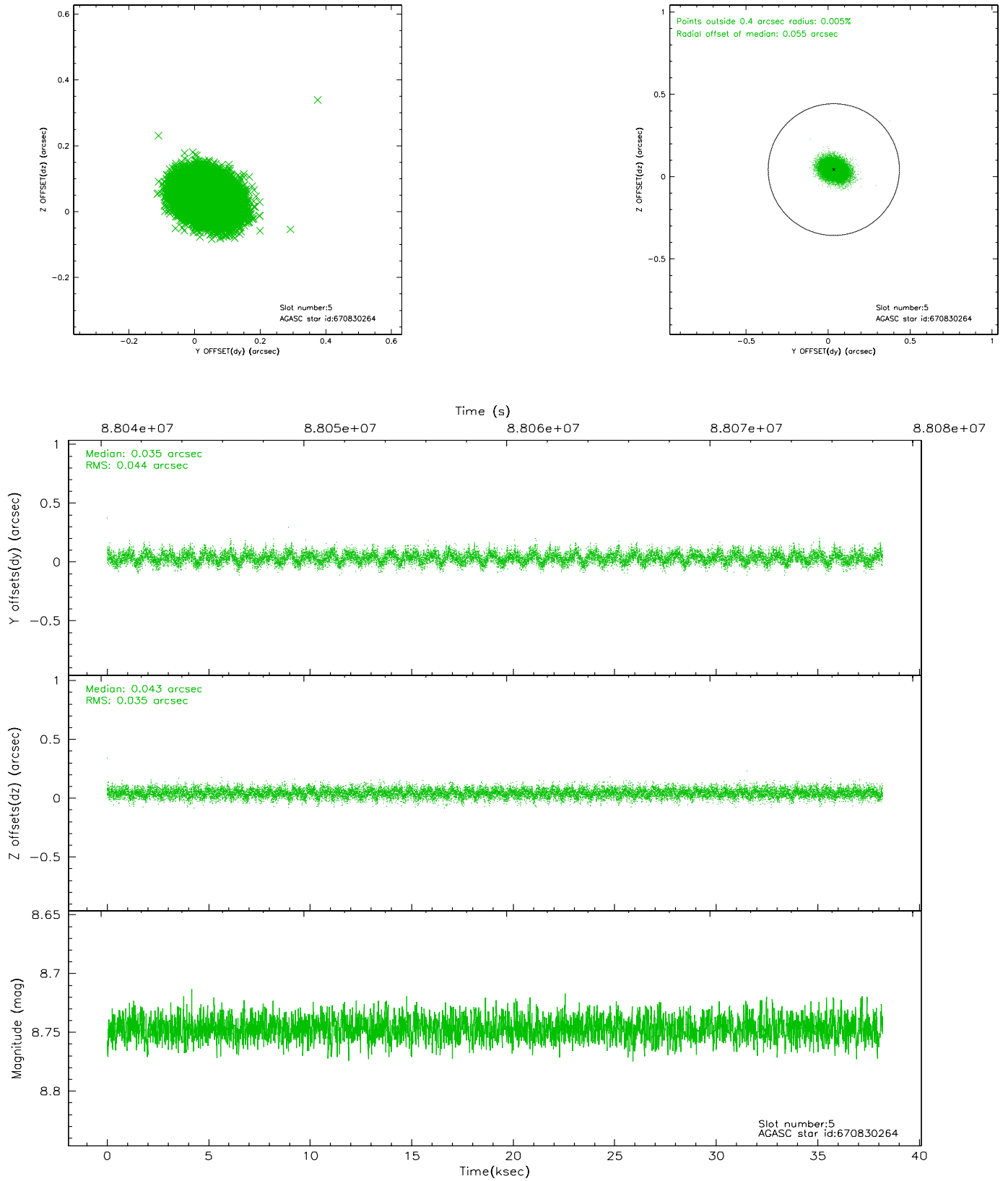
slot	status	id	mag	n_pts	med_dy	med_dz	dr1	dr2	ra	dec	mean_y	mean_z
0	FID	ACIS-S-2	7.11	9315	-0.026	0.024	0.007	0.011	0.000000	0.000000	-754.67	-1727.60
1	FID	ACIS-S-4	7.20	9314	-0.061	0.006	0.005	0.008	0.000000	0.000000	2158.55	180.86
2	FID	ACIS-S-5	7.23	9316	0.056	-0.021	0.006	0.010	0.000000	0.000000	-1807.41	174.51
3	GUIDE	670710320	7.72	18625	-0.273	0.012	0.050	0.081	281.093022	-2.489215	-1980.94	-1496.03
4	OMITTED		0.00	0	0.000	0.000	0.000	0.000	0.000000	0.000000	0.00	0.00
5	GUIDE	670830264	8.75	18629	0.035	0.043	0.059	0.097	281.361536	-3.231556	805.41	-937.82
6	GUIDE	670713072	9.02	18629	0.215	-0.015	0.073	0.119	281.205407	-3.604132	2048.94	-1691.80
7	GUIDE	670714008	9.03	18621	0.024	-0.038	0.069	0.110	281.129237	-3.153193	402.74	-1721.79

2.4 Star Slots

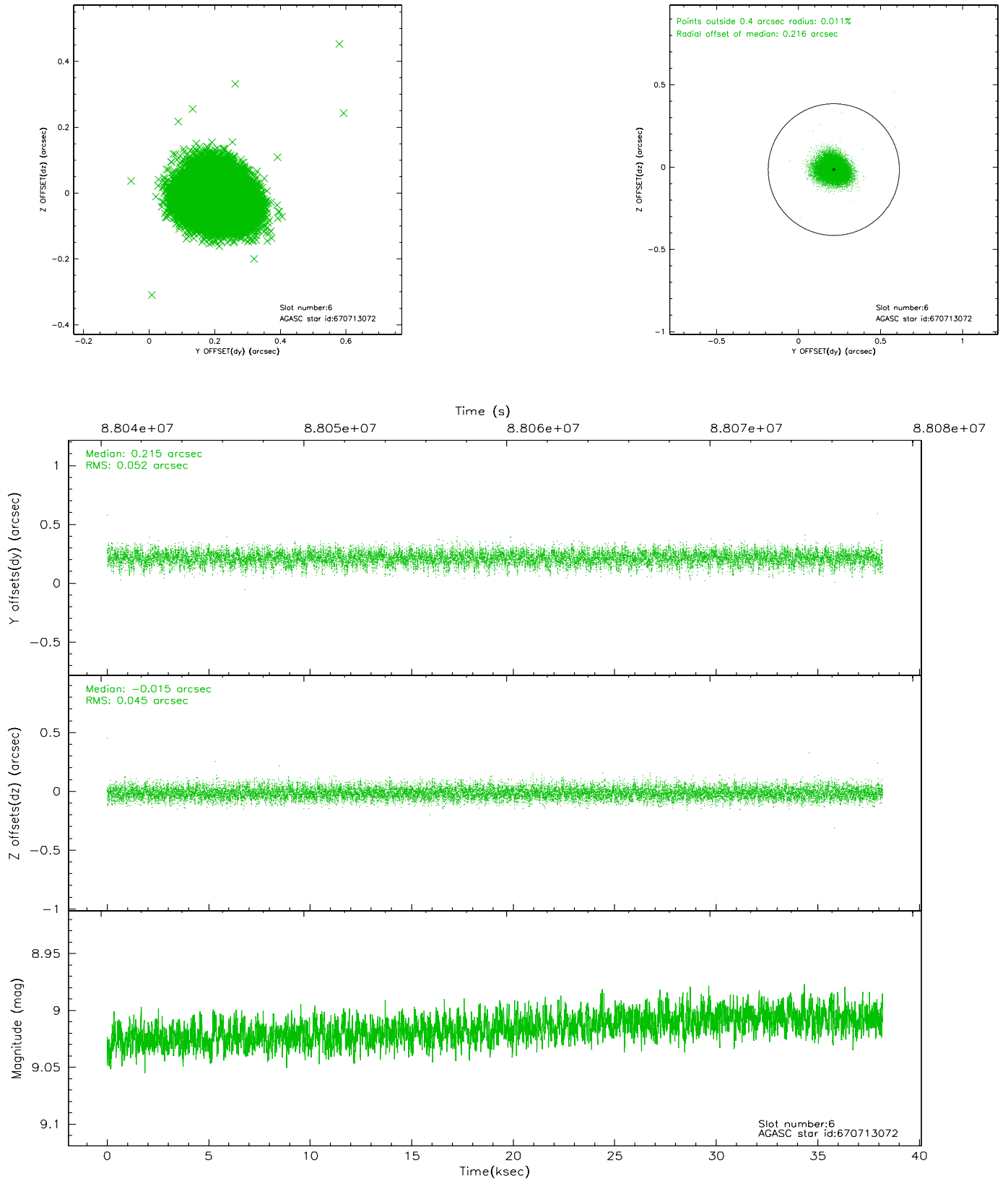
2.4.1 Slot 3



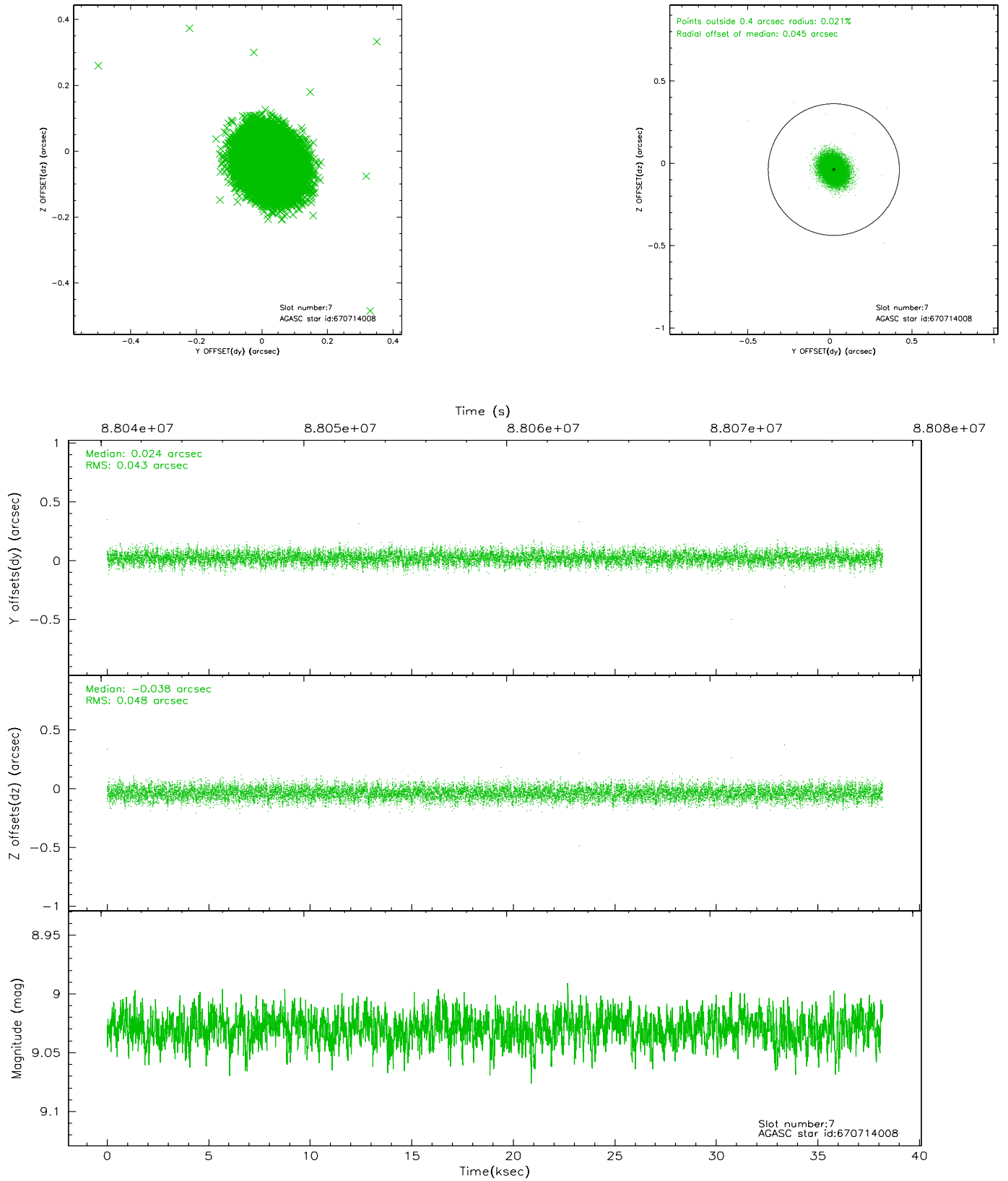
2.4.2 Slot 5



2.4.3 Slot 6

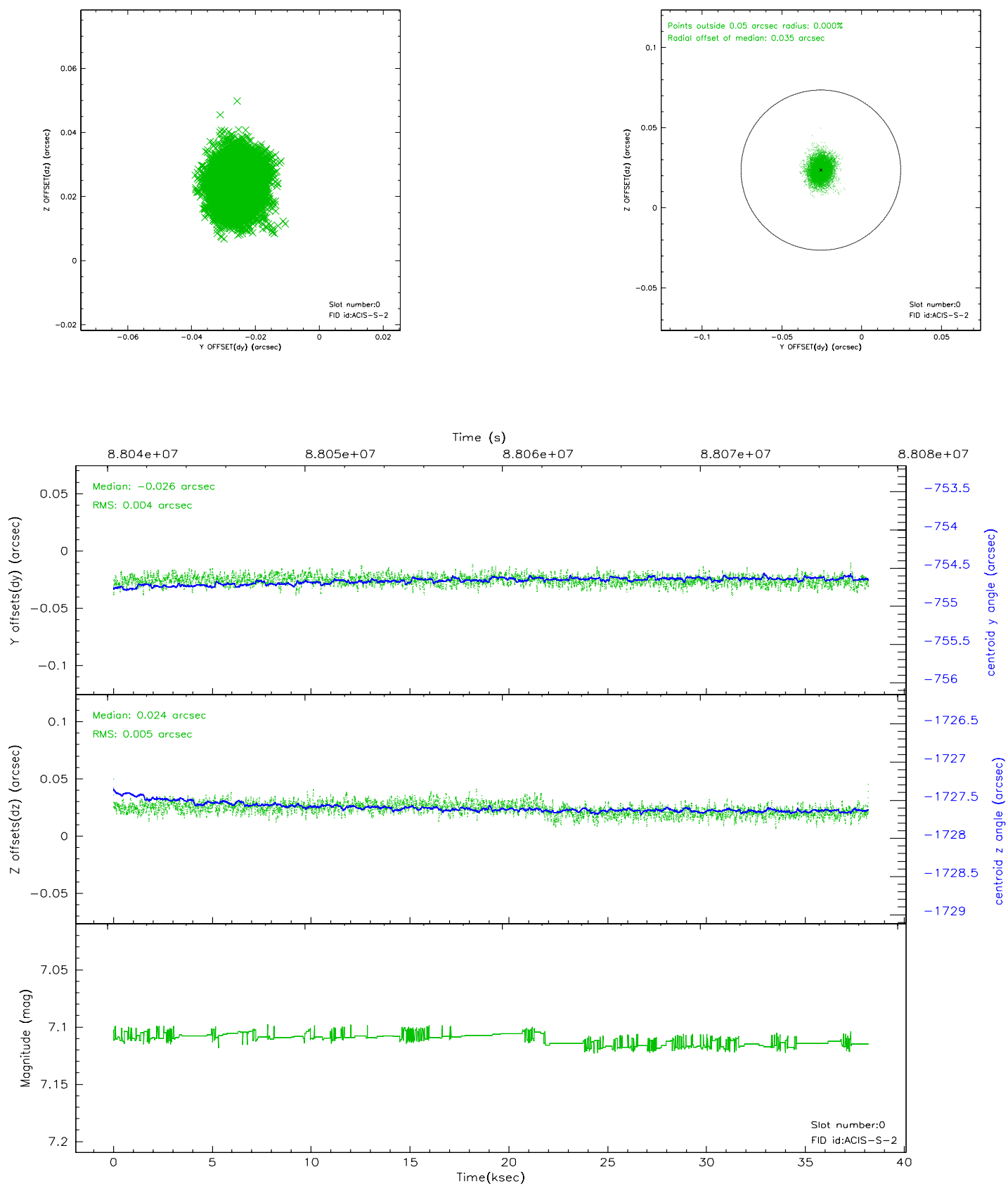


2.4.4 Slot 7

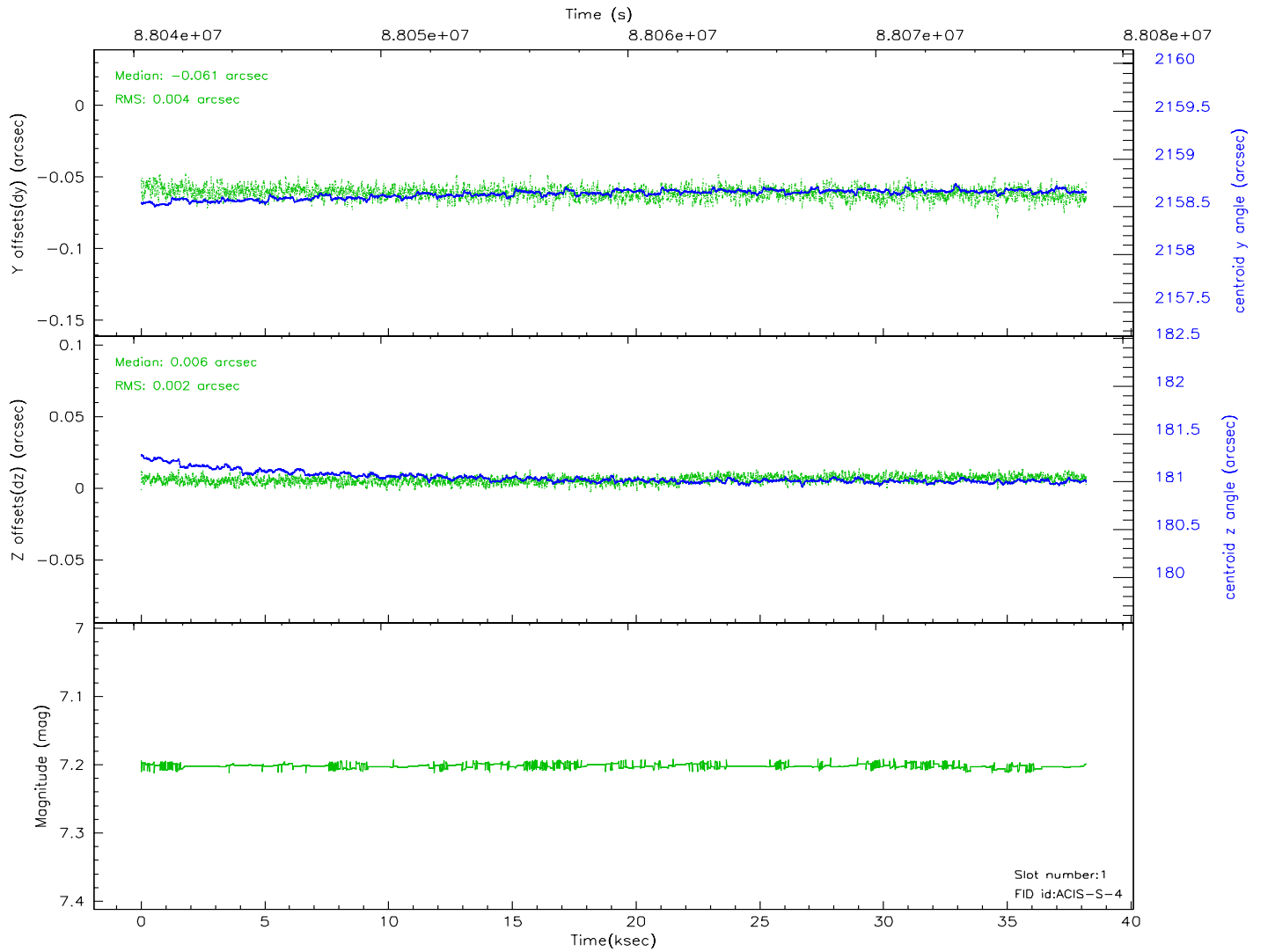
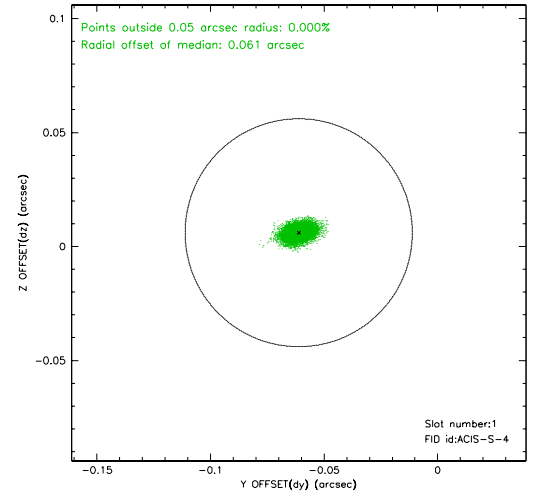
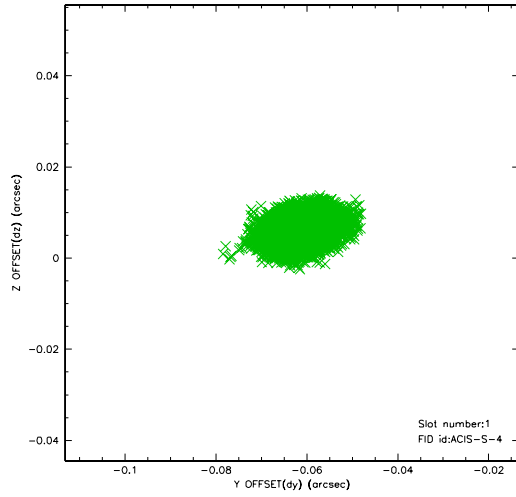


2.5 FID Slots

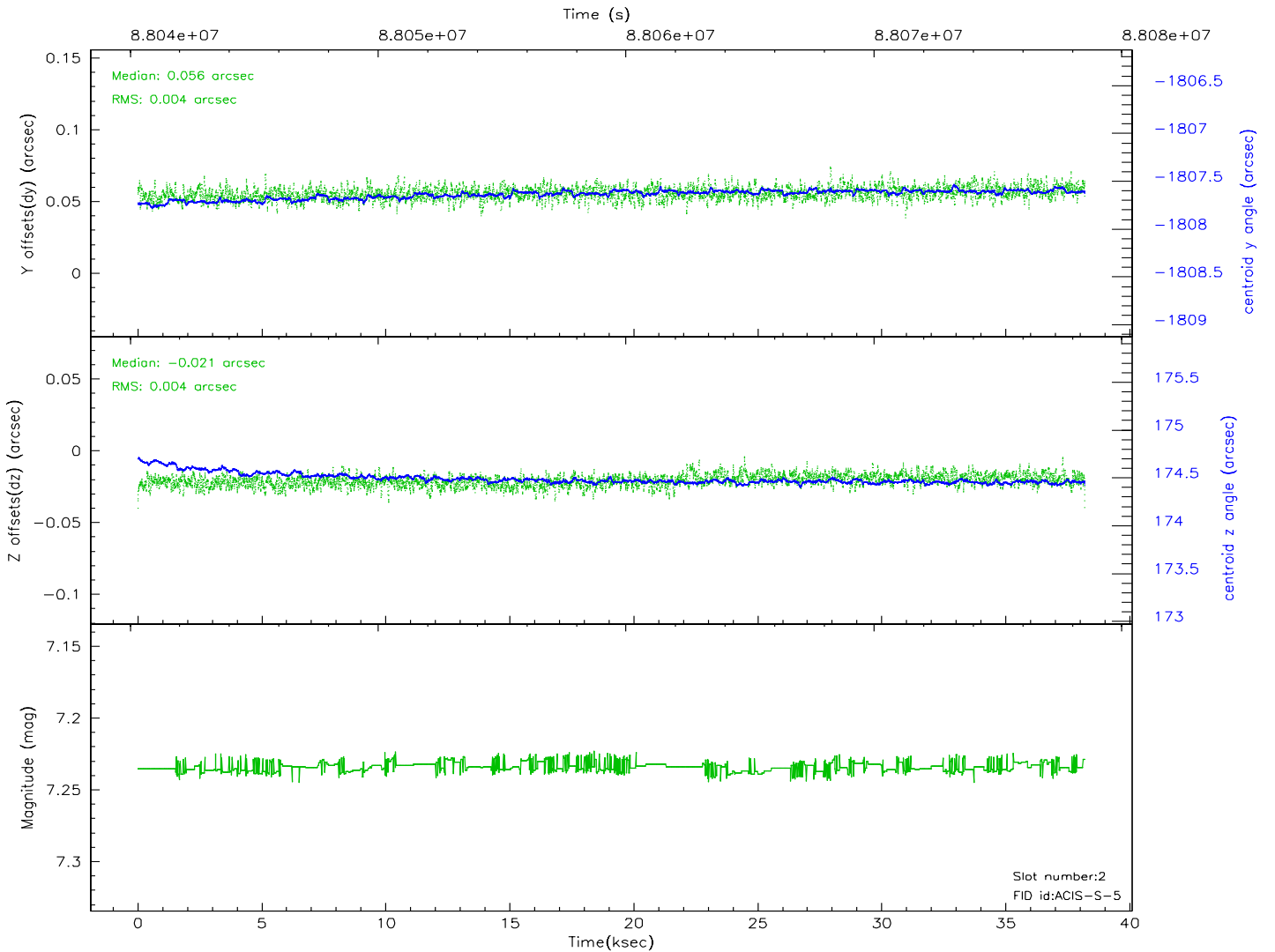
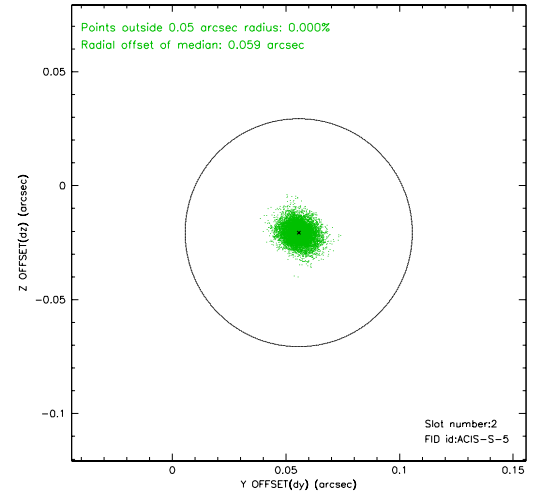
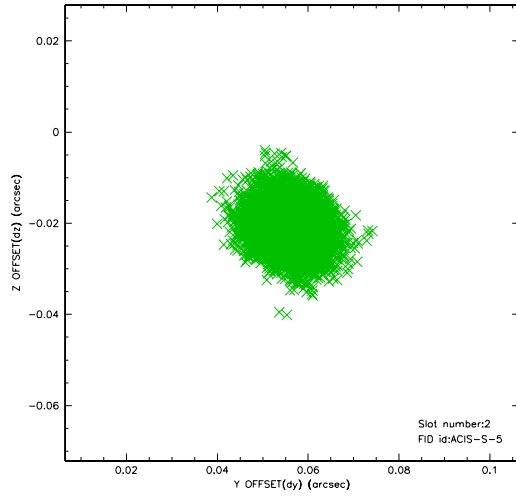
2.5.1 Slot 0



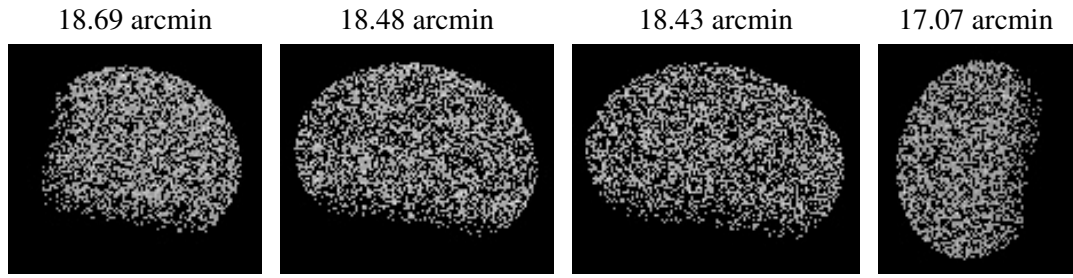
2.5.2 Slot 1



2.5.3 Slot 2



3 Point Sources



A Summary

A.1 Status

V&V Scientist	Jen Lauer
V&V Date (YYYY-MM-DD)	2010.10.01
V&V Edition	2
V&V Disposition and Status	OK
V&V Charge Time	37.756

A.2 Comments

The guide star in slot 4 was manually excluded from the processing due to poor data quality.