

V&V Reference Report

L2 ASCDS Version : 7.6.10

Observation 1848 - L2 Version 001
Chandra X-Ray Center

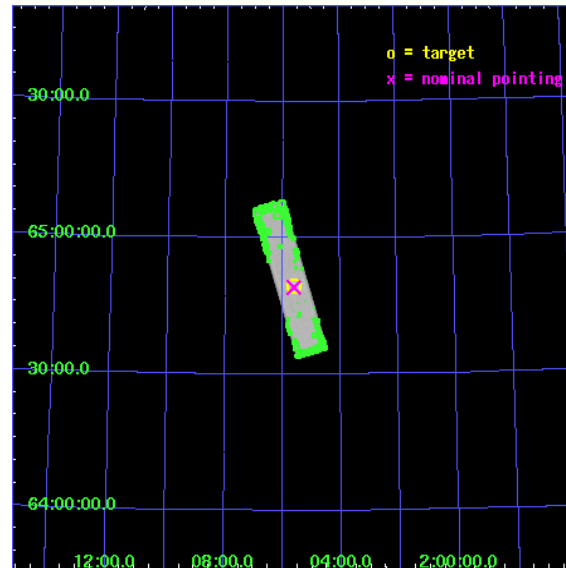
L2 Processing Date : Jun 21 2007

Contents

1	Front	2
2	OBI	3
2.1	OBI	3
2.1.1	Images	3
2.1.2	Parameters	4
2.1.3	Events	4
2.2	Compared Parameters	5
2.3	Aspect	6
2.4	Star Slots	9
2.4.1	Slot 3	9
2.4.2	Slot 4	10
2.4.3	Slot 5	11
2.4.4	Slot 6	12
2.4.5	Slot 7	13
2.5	FID Slots	14
2.5.1	Slot 0	14
2.5.2	Slot 1	15
2.5.3	Slot 2	16
3	Point Sources	17
A	Summary	18
A.1	Status	18
A.2	Comments	18

1 Front

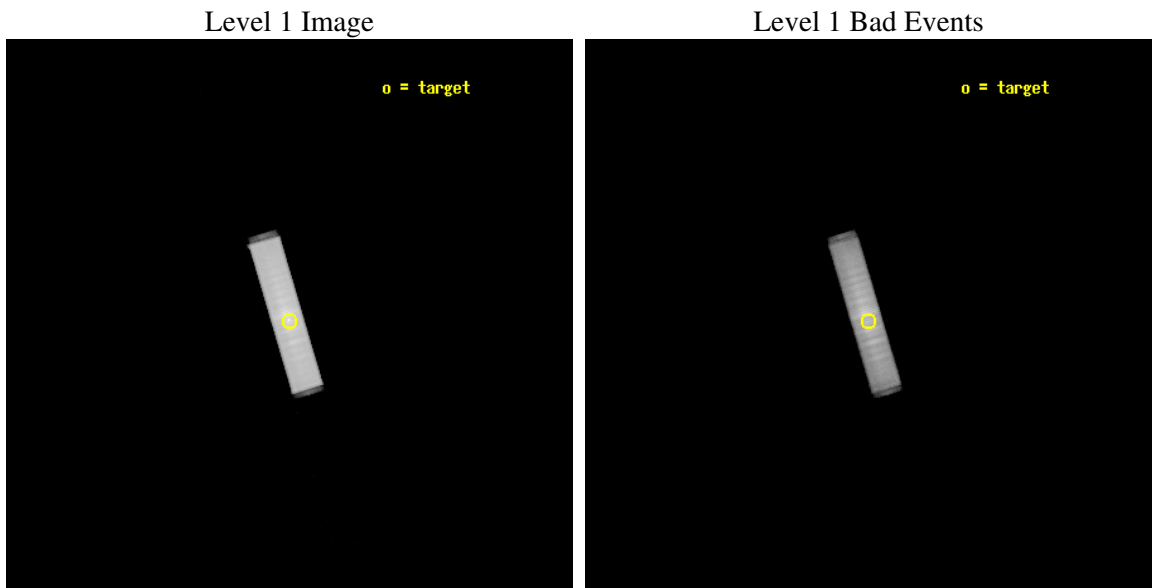
seq_num	500120
obs_id	1848
title	SEARCH FOR PULSARS
observer	Dr. Stephen Murray
object	3C 58
ra_targ	31.408333
dec_targ	64.823333
ra_nom	31.404624914519
dec_nom	64.818735236722
roll_nom	253.39791973511
revision	4
ontime	33541.332533404
livetime	33451.639818383
l2events	769095



2 OBI

2.1 OBI

2.1.1 Images



2.1.2 Parameters

obi_num	0
ascdsver	7.6.10
caldbver	3.4.0
date	2007-06-21T21:00:05
revision	4

sched_exp_time	33625.000000
ontime	33541.332533404
l1events	1329330

2.1.3 Events

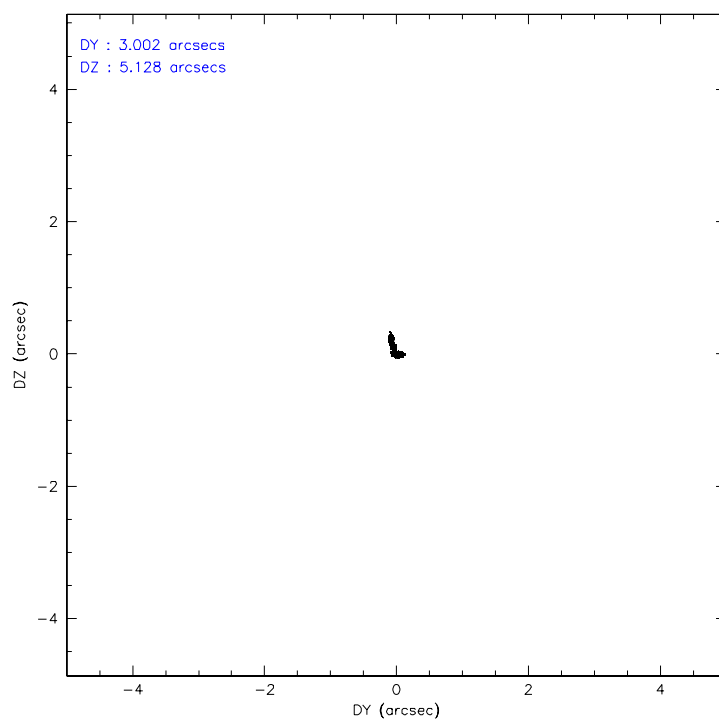
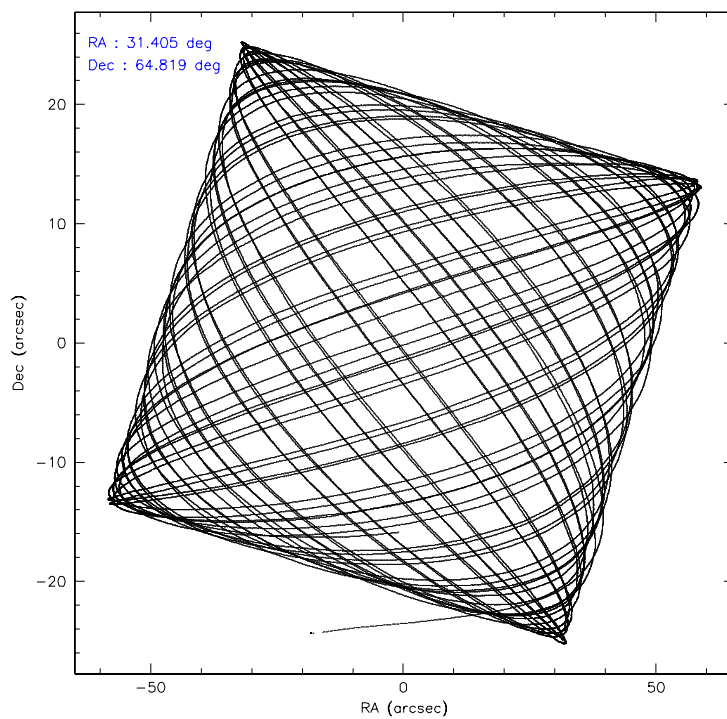
Level 1 Events

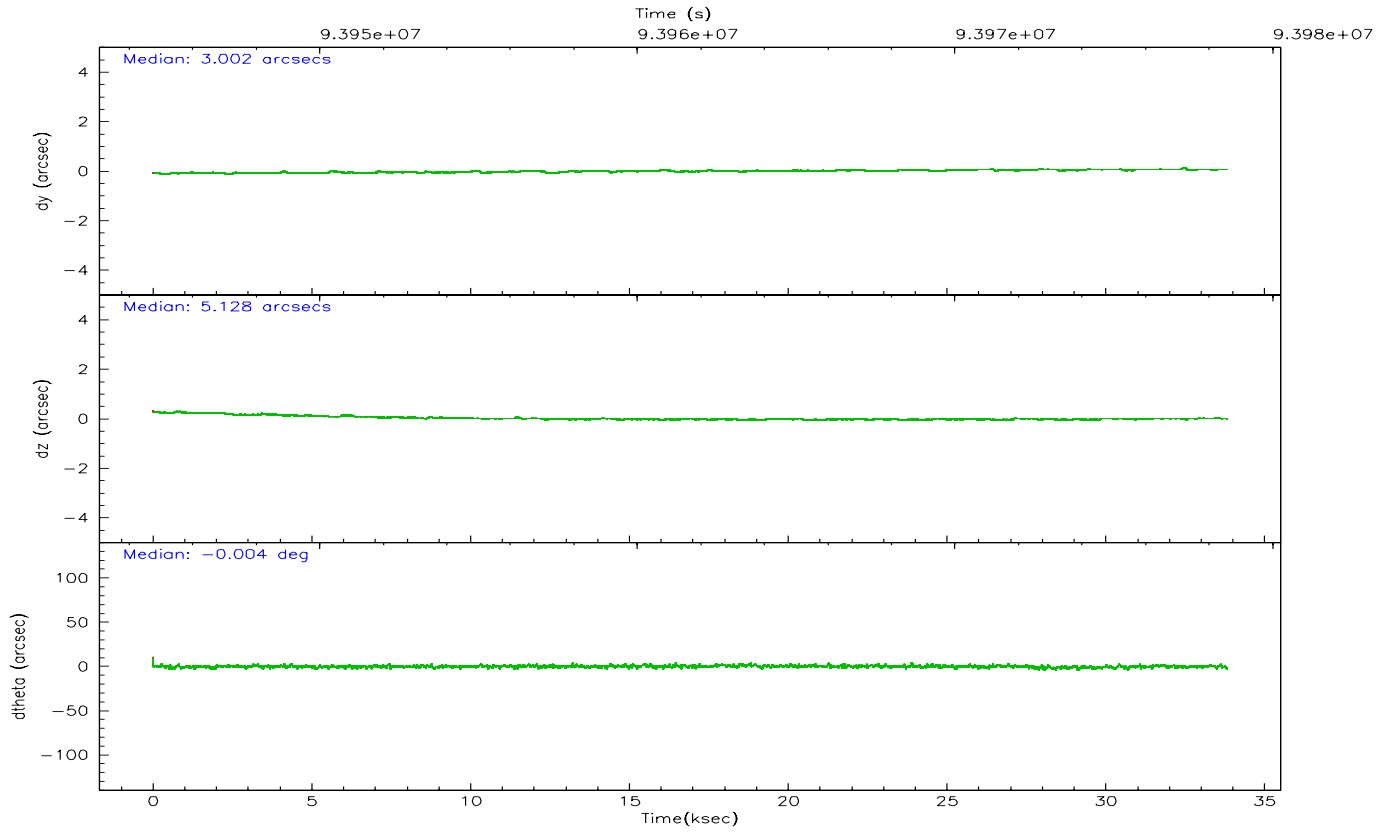
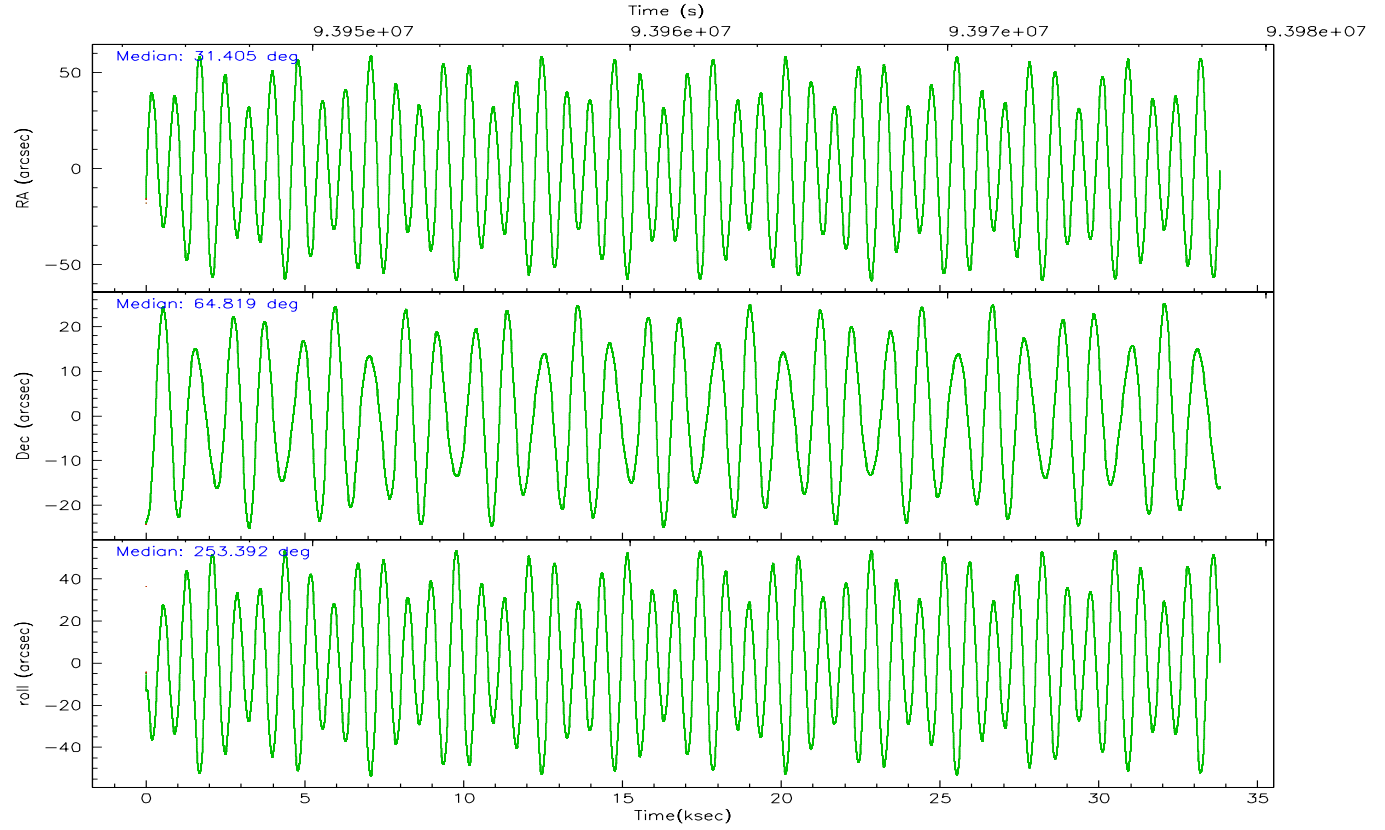
	segment 1	segment 2	segment 3
level 1 events	2046	1327272	12
rejected events	1925	492957	10
rejected %	94%	37%	83%

2.2 Compared Parameters

Parameter	Planned	Actual	Parameter	Planned	Actual
Instrument	HRC	HRC	Obspar format version number	6	6
Detector	HRC-S	HRC-S	Obspar file type	PREDICTED	ACTUAL
Grating	NONE	NONE	Obspar update status	NONE	UPDATED
Data mode	OBSERVING	OBSERVING			
Observation mode	POINTING	POINTING			
Pointing RA	31.386071	31.40462491451941			
Pointing Dec	64.846344	64.81873523672218			
Pointing Roll	253.347384	253.3979197351099			
SIM focus pos (mm)	-1.429586	-1.428180813131781			
SIM defocus (mm)	0.1037507710433287	0.1051558262725154			
SIM translation stage pos (mm)	250.455976	250.466033080201			
SIM translation stage offset (mm)	0	-0.01005468664627074			
Observation start time	93944943.184000	93944150.410044			
Observation start date	2000-12-23T07:47:59	2000-12-23T07:35:50			
Observation end time	93978568.184000	93979681.01140299			
Observation end date	2000-12-23T17:08:24	2000-12-23T17:28:01			

2.3 Aspect



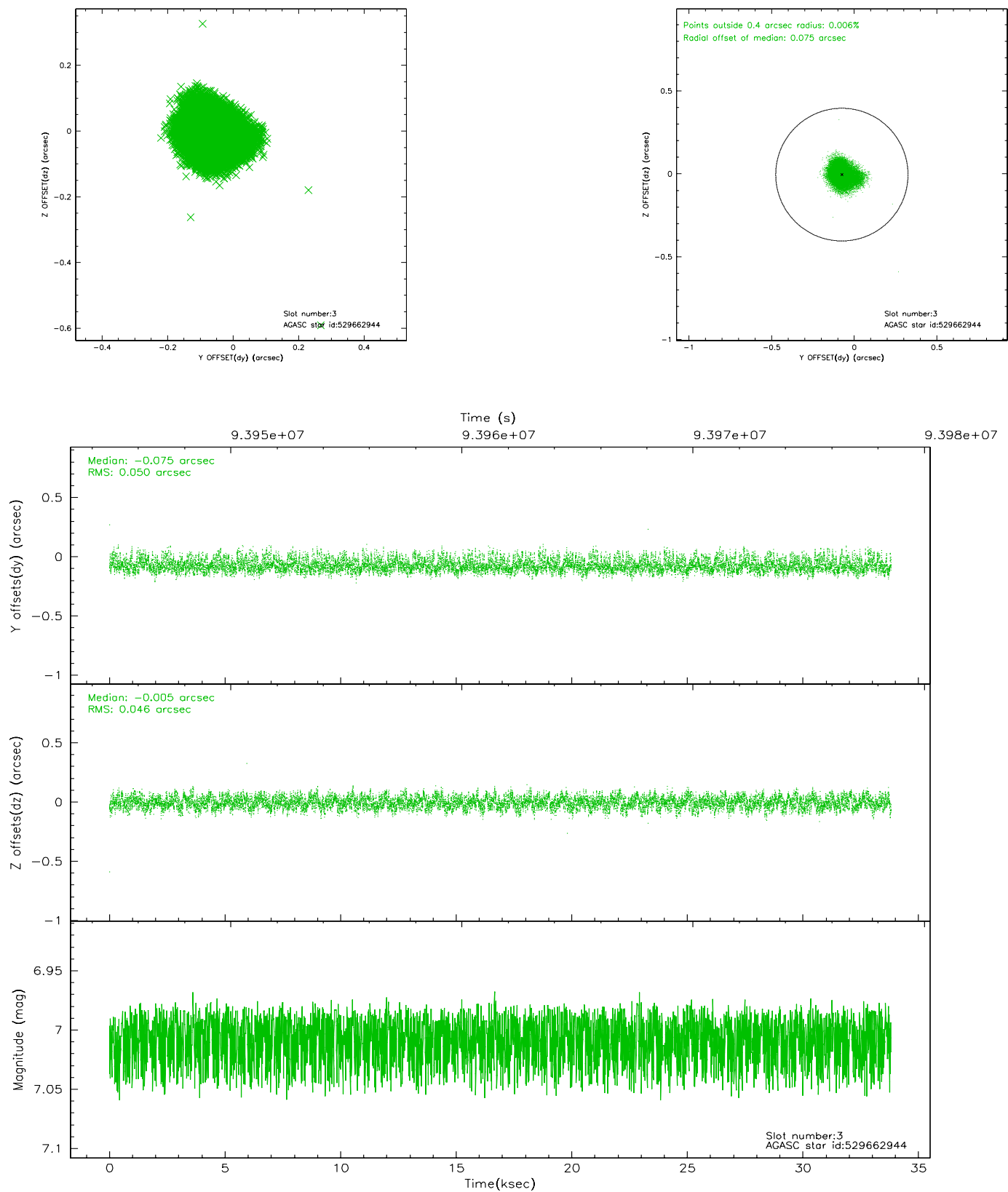


Slot Statistics

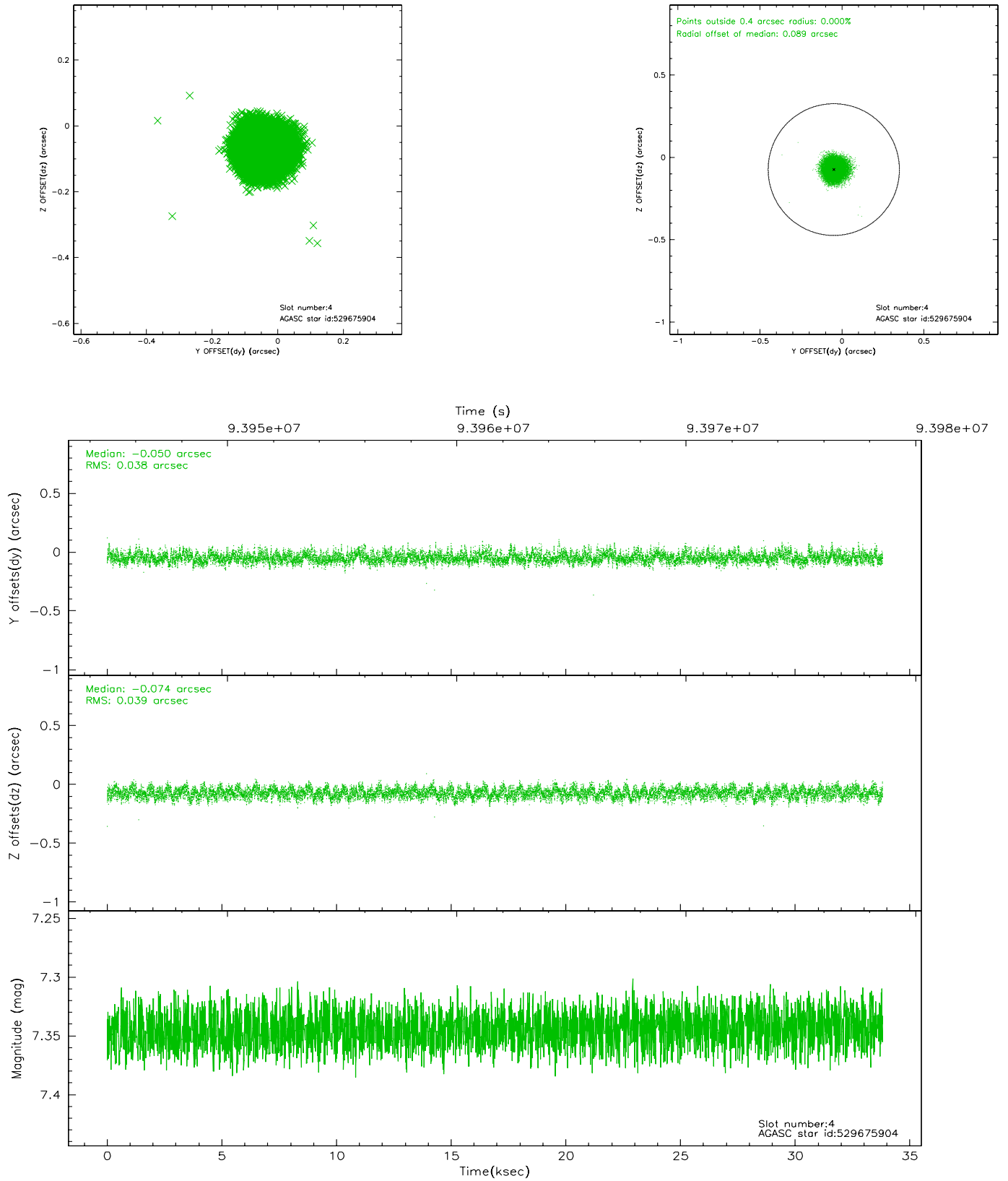
slot	status	id	mag	n_pts	med_dy	med_dz	dr1	dr2	ra	dec	mean_y	mean_z
0	FID	HRC-S-1	6.98	8249	0.116	-0.162	0.009	0.015	0.000000	0.000000	-1157.06	-453.71
1	FID	HRC-S-3	7.00	8249	0.143	-0.041	0.009	0.014	0.000000	0.000000	-1159.91	575.88
2	FID	HRC-S-4	6.93	8248	0.129	-0.094	0.006	0.011	0.000000	0.000000	1241.06	578.55
3	GUIDE	529662944	7.01	16493	-0.075	-0.005	0.074	0.112	31.166392	65.103499	-791.87	-585.53
4	GUIDE	529675904	7.34	16497	-0.050	-0.074	0.058	0.091	31.256077	64.385587	1647.02	280.42
5	GUIDE	529665216	7.76	16497	-0.093	0.049	0.062	0.102	32.189318	65.037431	-1016.08	968.70
6	GUIDE	529670336	8.53	16492	0.083	0.022	0.058	0.094	31.583988	64.608918	731.06	536.60
7	GUIDE	529673088	8.83	16493	0.127	0.006	0.067	0.112	30.560791	64.638256	1074.91	-1007.80

2.4 Star Slots

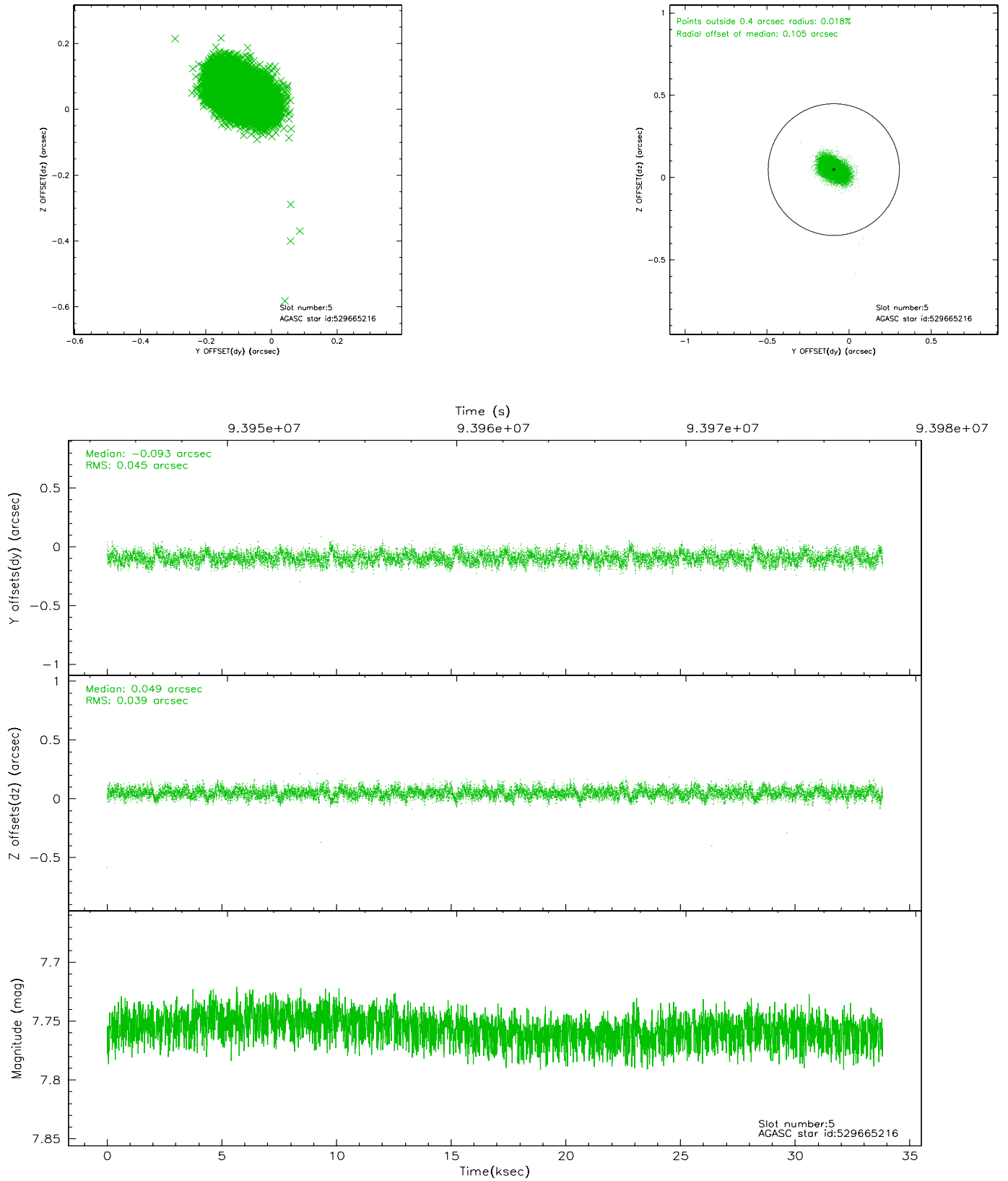
2.4.1 Slot 3



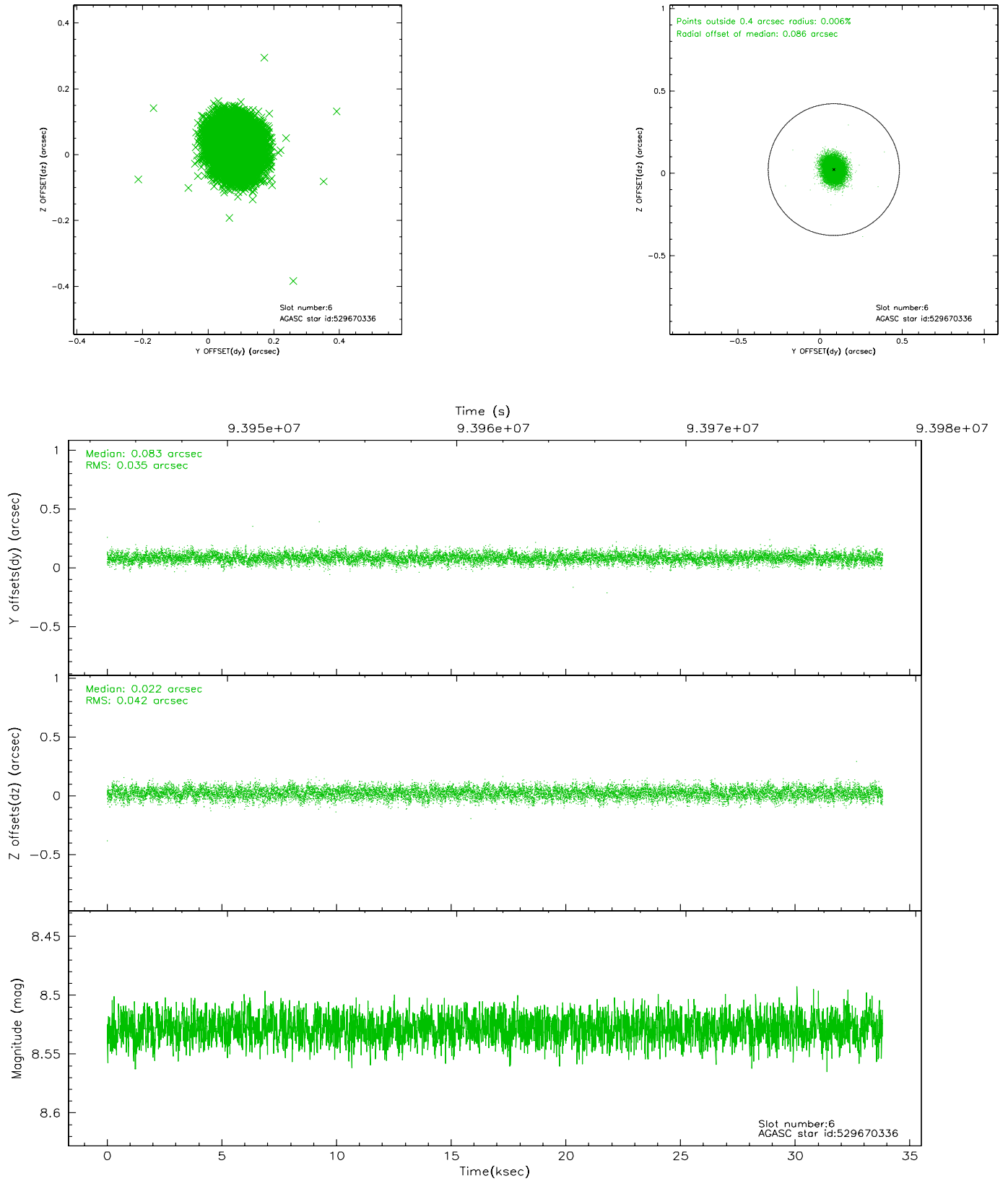
2.4.2 Slot 4



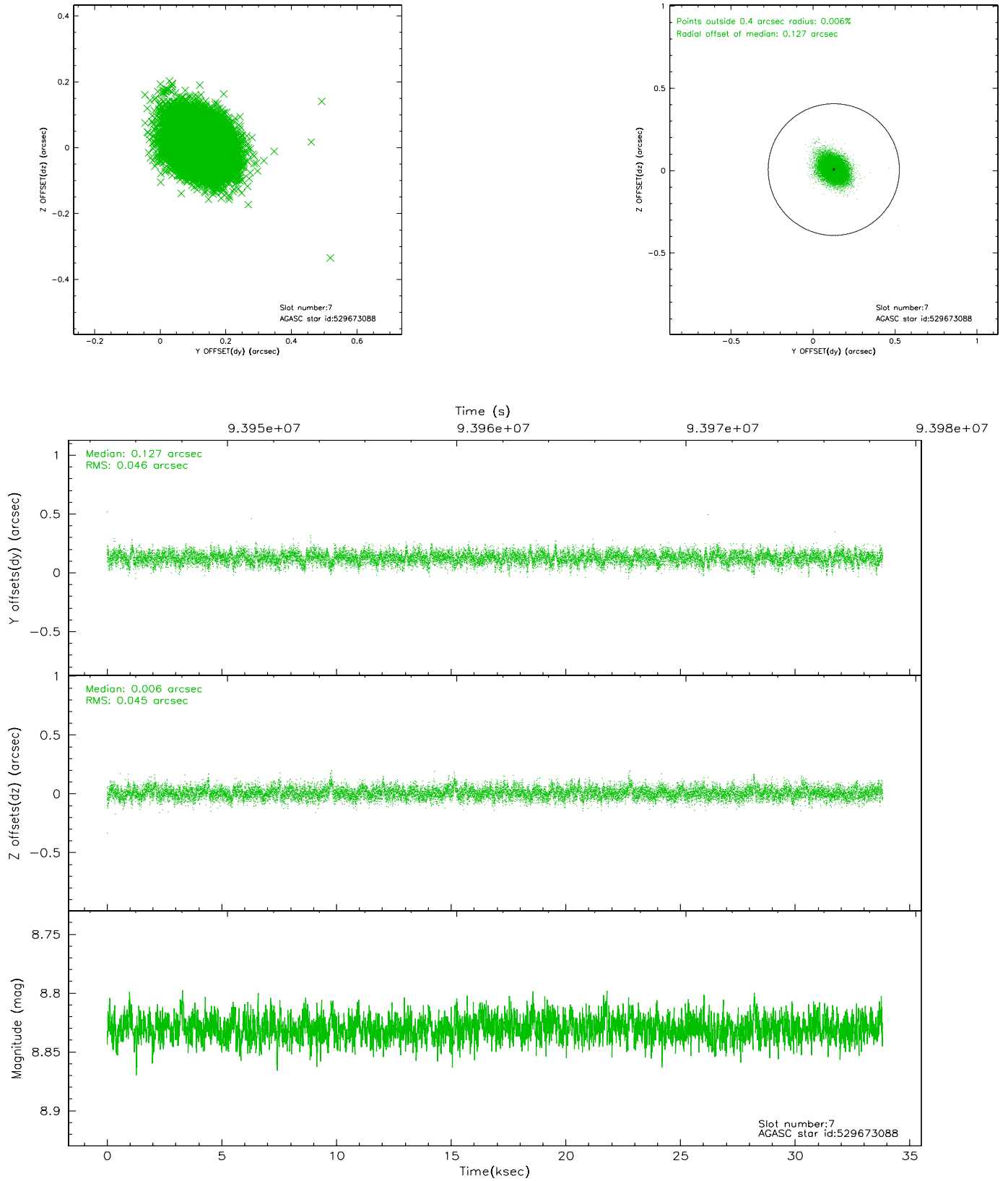
2.4.3 Slot 5



2.4.4 Slot 6

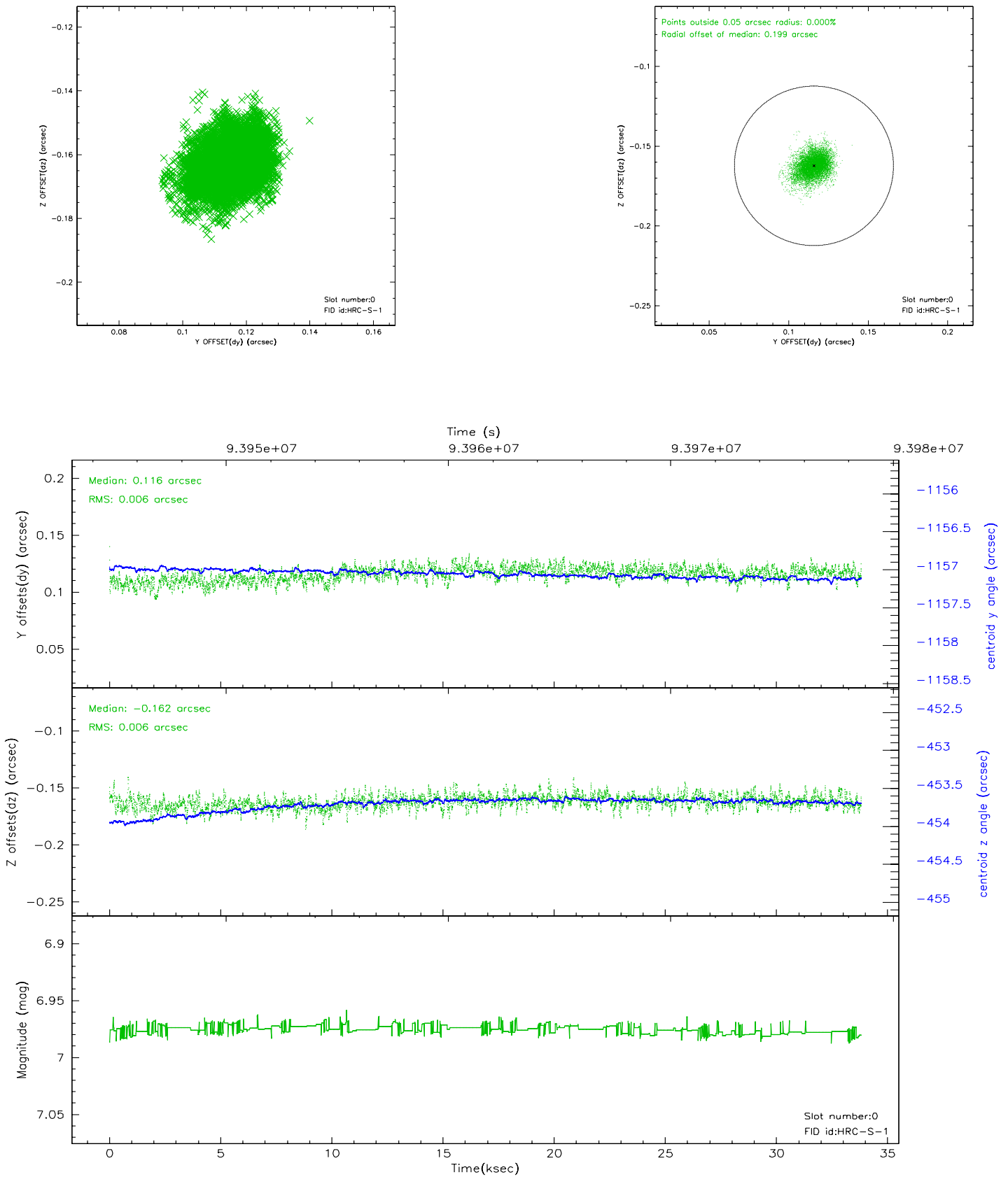


2.4.5 Slot 7

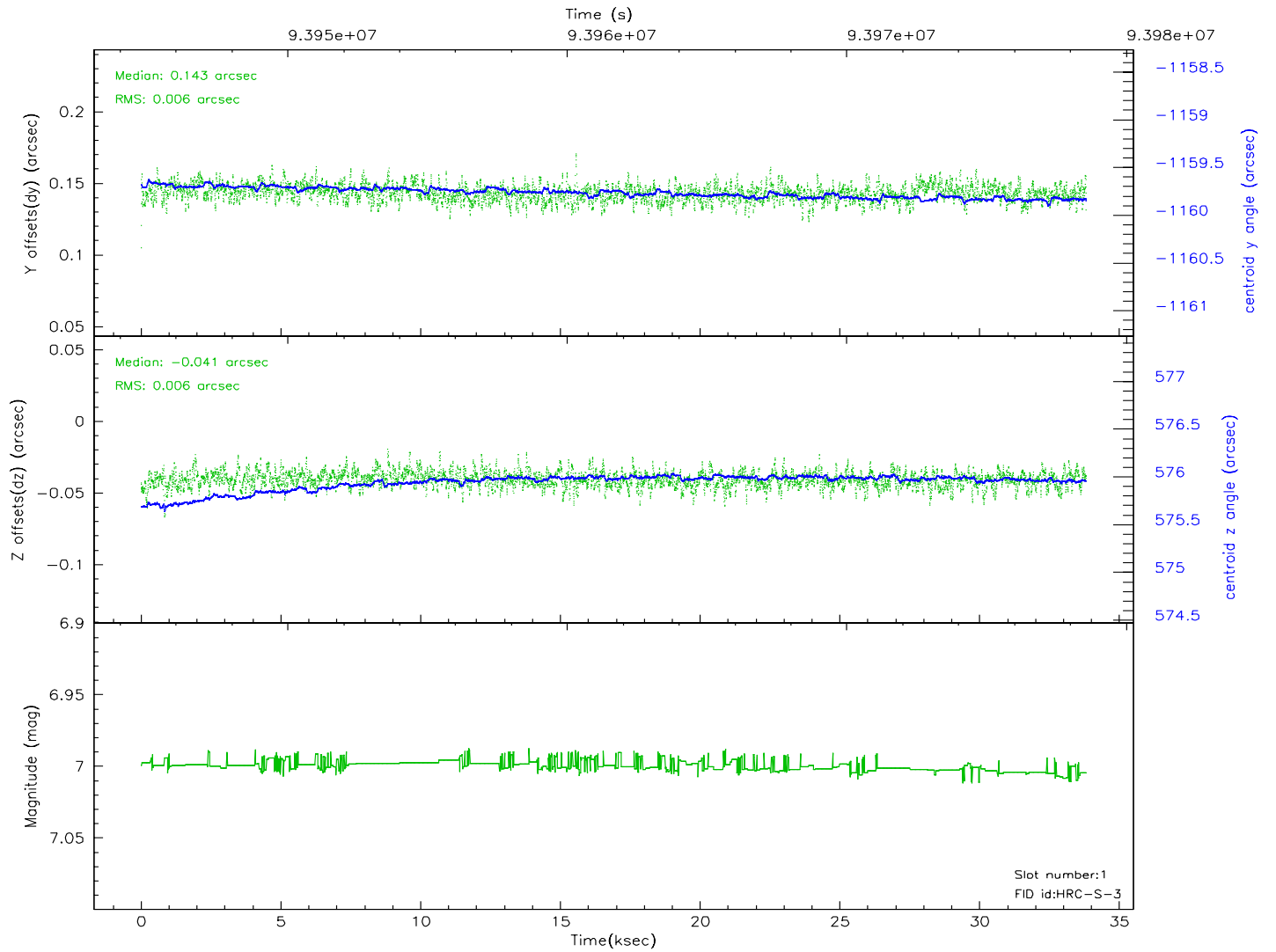
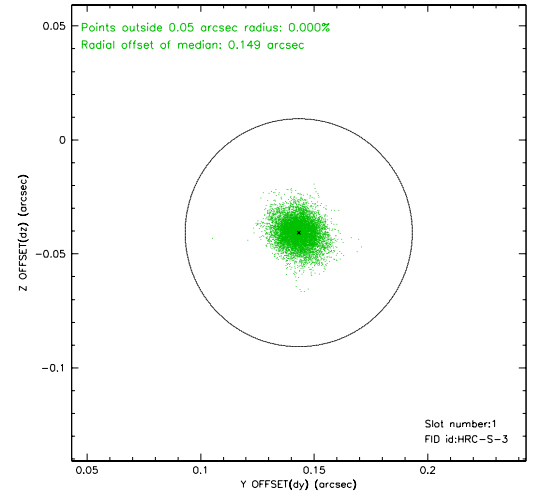
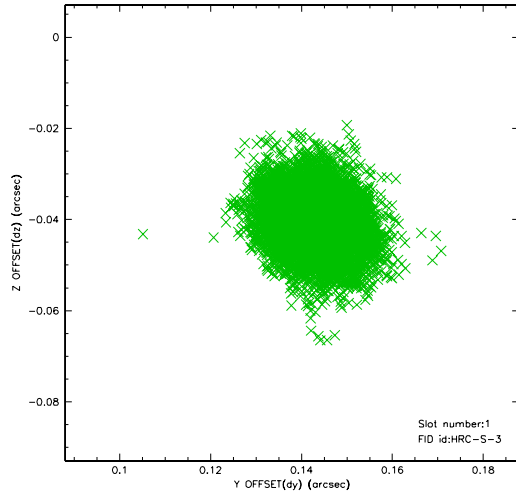


2.5 FID Slots

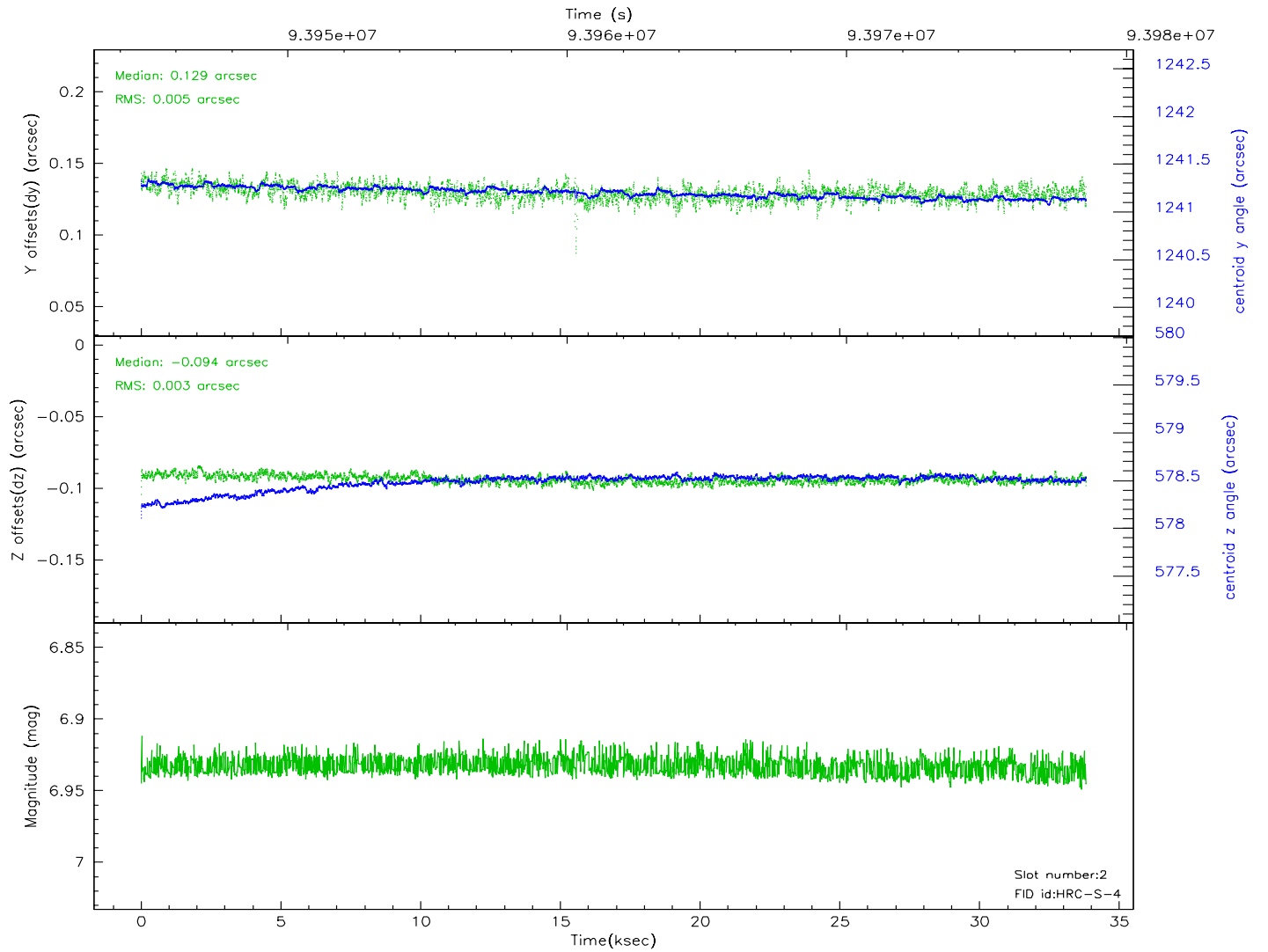
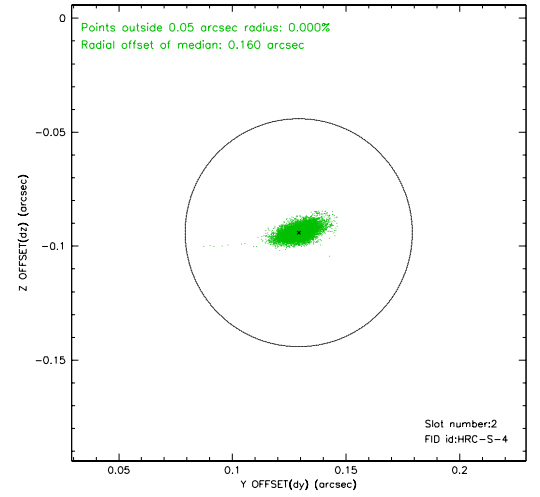
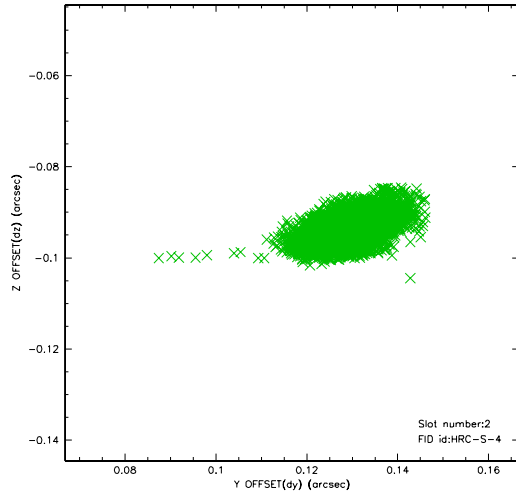
2.5.1 Slot 0



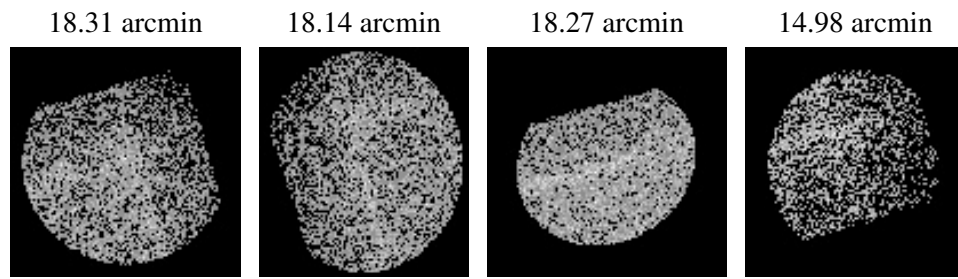
2.5.2 Slot 1



2.5.3 Slot 2



3 Point Sources



A Summary

A.1 Status

V&V Scientist	Jen Lauer
V&V Date (YYYY-MM-DD)	2007.06.22
V&V Edition	1
V&V Disposition and Status	OK
V&V Charge Time	33.512

A.2 Comments