

V&V Reference Report

L2 ASCDS Version : 8.4.5

Observation 128 - L2 Version 4
Chandra X-Ray Center

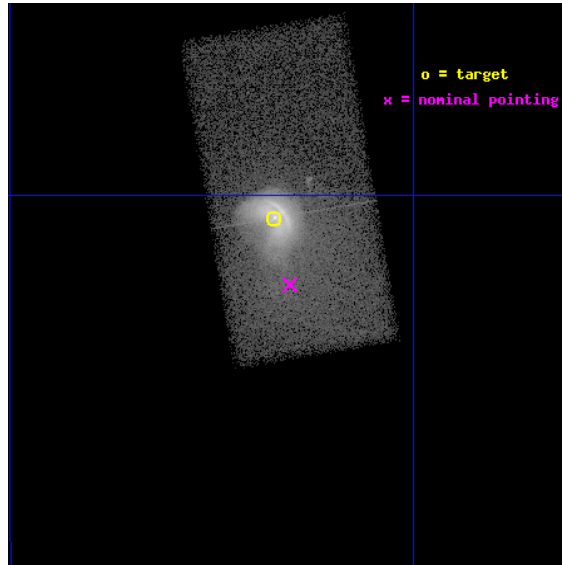
L2 Processing Date : Aug 26 2012

Contents

1	Front	2
2	OBI	3
2.1	OBI	3
2.1.1	Images	3
2.1.2	Bias	3
2.1.3	Parameters	4
2.1.4	Events	4
2.2	Compared Parameters	5
2.3	Aspect	6
2.4	Star Slots	9
2.4.1	Slot 3	9
2.4.2	Slot 4	10
2.4.3	Slot 5	11
2.4.4	Slot 6	12
2.4.5	Slot 7	13
2.5	FID Slots	14
2.5.1	Slot 0	14
2.5.2	Slot 1	15
2.5.3	Slot 2	16
A	Summary	17
A.1	Status	17
A.2	Comments	17

1 Front

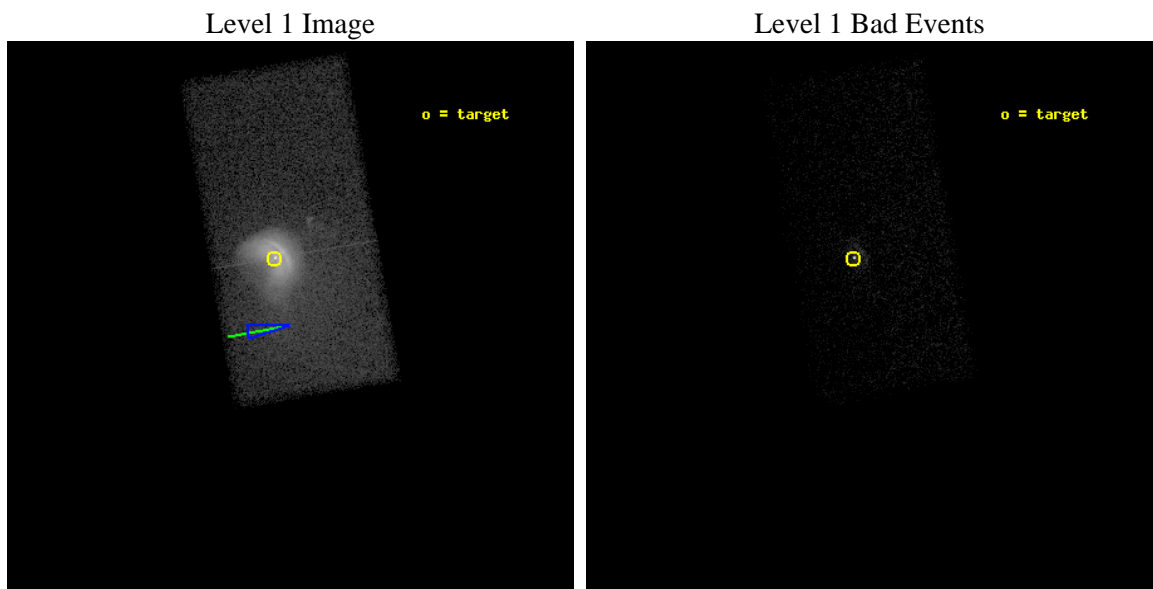
seq_num	500015	Sequence number
obs_id	128	Observation id
title	THE VELA PULSAR	Proposal title
observer	Professor Gordon Garmire	Principal investigator
object	VELA PULSAR	Source name
dtcycle	0	
cycle	P	events from which exps? Prim/Second/Both
ra_targ	128.83625	Observer's specified target RA [deg]
dec_targ	-45.176667	Observer's specified target Dec [deg]
ra_nom	128.82658668641	Nominal RA [deg]
dec_nom	-45.205291659534	Nominal Dec [deg]
roll_nom	260.30307655861	Nominal Roll [deg]
revision	4	Processing version of data
ontime	10866.0	Sum of GTIs [s]
livetime	10576.623578882	Livetime [s]
ontime7	10866.0	Sum of GTIs [s]
l2events	193691	Number of level 2 events



2 OBI

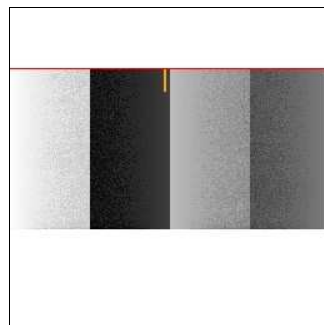
2.1 OBI

2.1.1 Images



2.1.2 Bias

Chip 7



2.1.3 Parameters

obi_num	0	Obi number	sched_exp_time	10400.000000	[s] Scheduled observation exposure time
ascdsver	8.4.5	Processing system revision	ontime	10866.0	Sum of GTIs [s]
caldsver	4.5.1.1	 	ontime7	10866.0	Sum of GTIs [s]
date	2012-08-26T20:39:36	Date and time of file creation	l1events	236927	Number of level 1 events
revision	4	Processing version of data			

2.1.4 Events

	ccd 7
level 1 events	236927
rejected events	39964
rejected %	16%

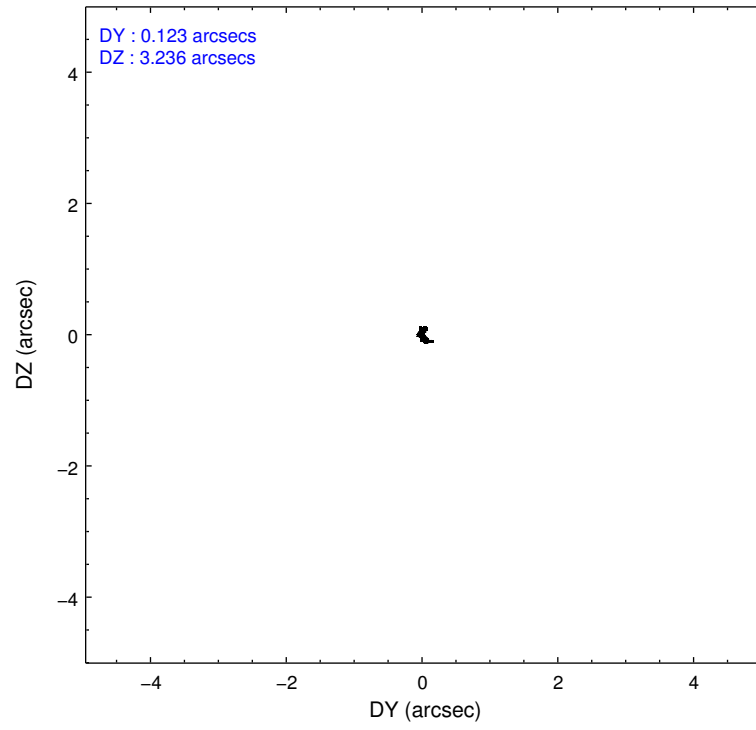
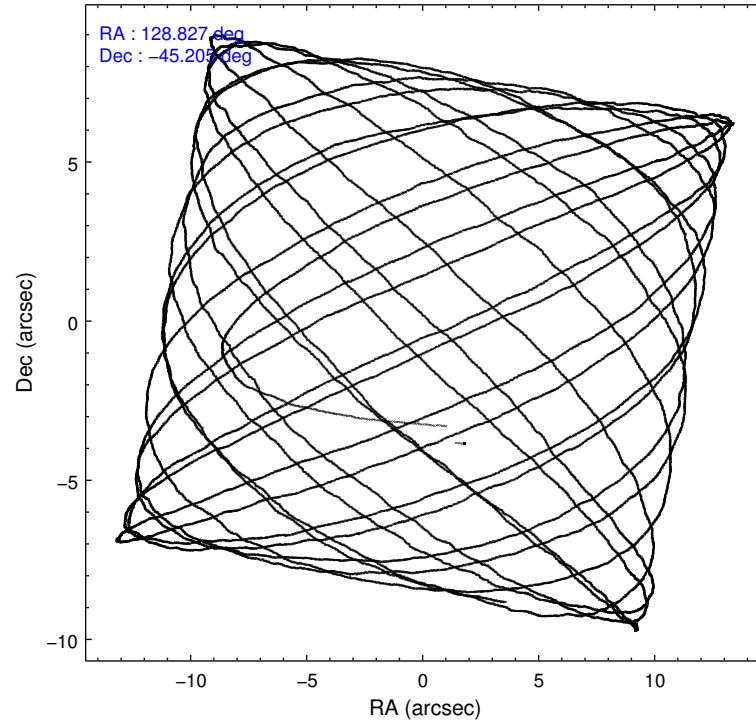
	ccd 7
grade 0 events	66410
	28%
grade 1 events	470
	0%
grade 2 events	48981
	20%
grade 3 events	21909
	9%
grade 4 events	22024
	9%
grade 5 events	6753
	2%
grade 6 events	41330
	17%
grade 7 events	29050
	12%

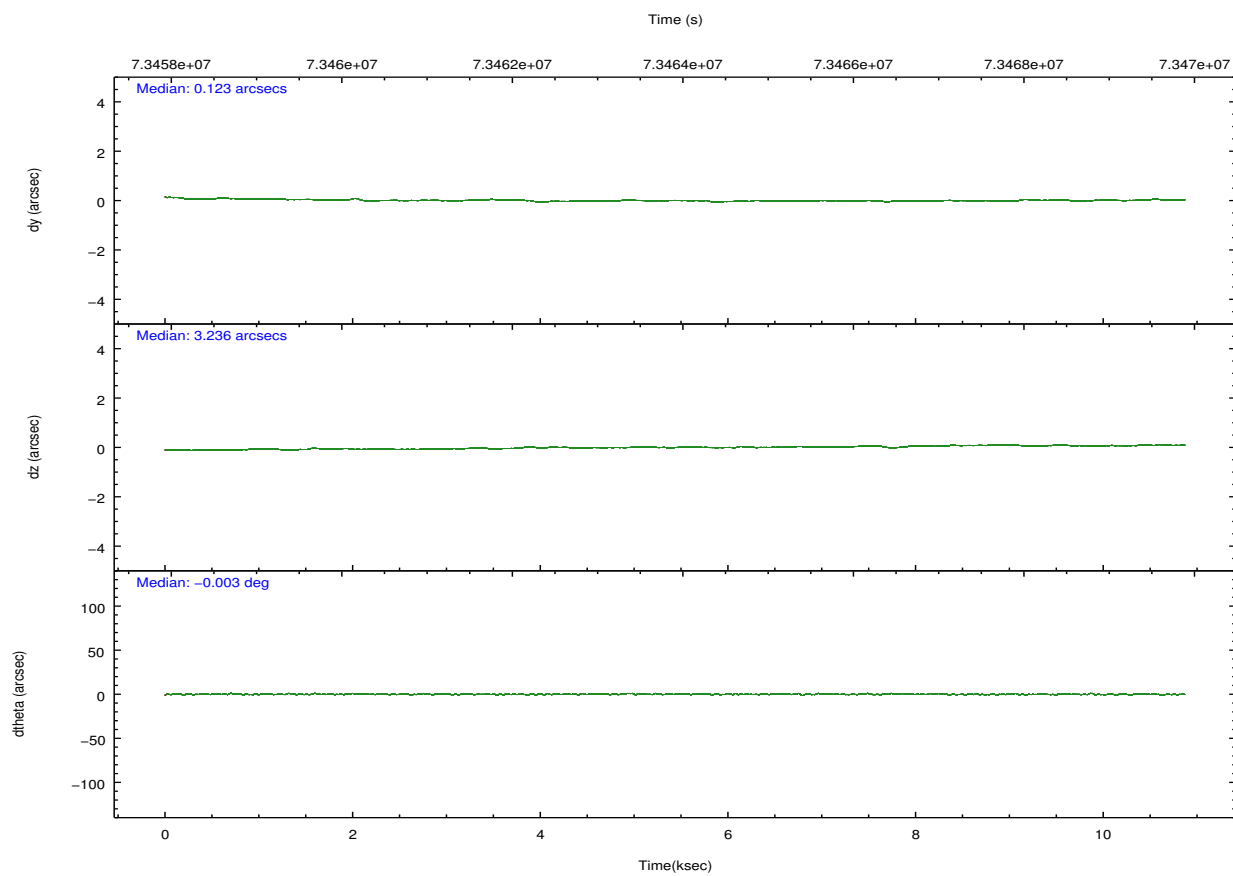
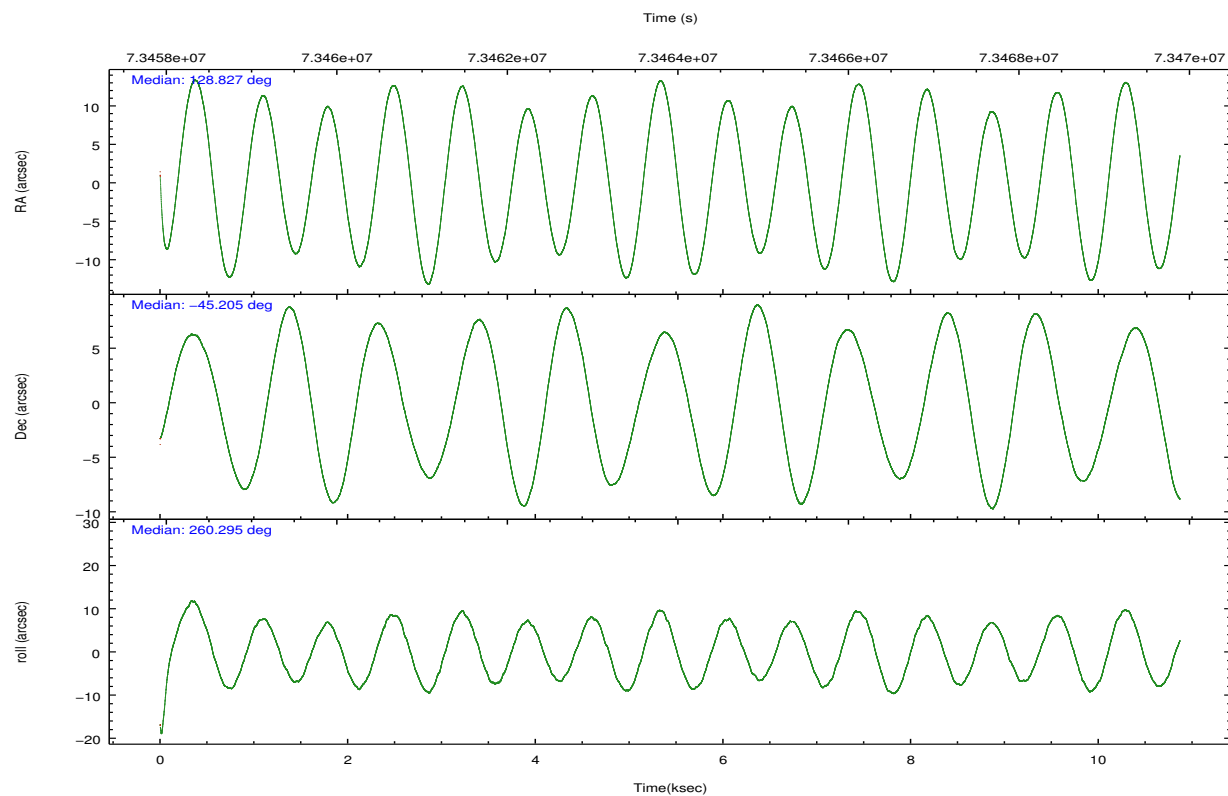
2.2 Compared Parameters

Parameter	Planned	Actual
Instrument	ACIS	ACIS
Detector	ACIS-7	ACIS-7
Grating	NONE	NONE
Data mode	FAINT	FAINT
Observation mode	POINTING	POINTING
[deg] Pointing RA	128.812980	128.8265866864078
[deg] Pointing Dec	-45.179568	-45.20529165953406
[deg] Pointing Roll	260.136838	260.3030765586103
[deg] Roll angle	262.000000	262.000000
[deg] Roll tolerance	10.000000	10.000000
Roll constraint allows 180D rotation	N	N
[mm] SIM focus pos	-0.684267	-0.6828225247311905
[mm] SIM defocus	0	0.001444936568705701
[mm] SIM translation stage pos	-190.132523	-190.1400660498719
[mm] SIM translation stage offset	0	0.00754346686406393
[s] Observation start time (MET)	73458943.184000	73457667.34332301
Observation start date	2000-04-30T05:14:39	2000-04-30T04:54:27
[s] Observation end time (MET)	73469343.184000	73470047.80627801
Observation end date	2000-04-30T08:07:59	2000-04-30T08:20:47
Read mode	TIMED	TIMED

Parameter	Planned	Actual
Obspar format version number	7	7
Obspar file type	PREDICTED	ACTUAL
Obspar update status	NONE	UPDATED
Number of optional ACIS chips dropped	0	0
On-chip summing requested	N	N
Subarray requested	CUSTOM	1/2
Subarray start row	320	320
Subarray row count	512	512
Alternating exposures requested	N	N
[s] Primary exposure time	0.000000	1.5

2.3 Aspect



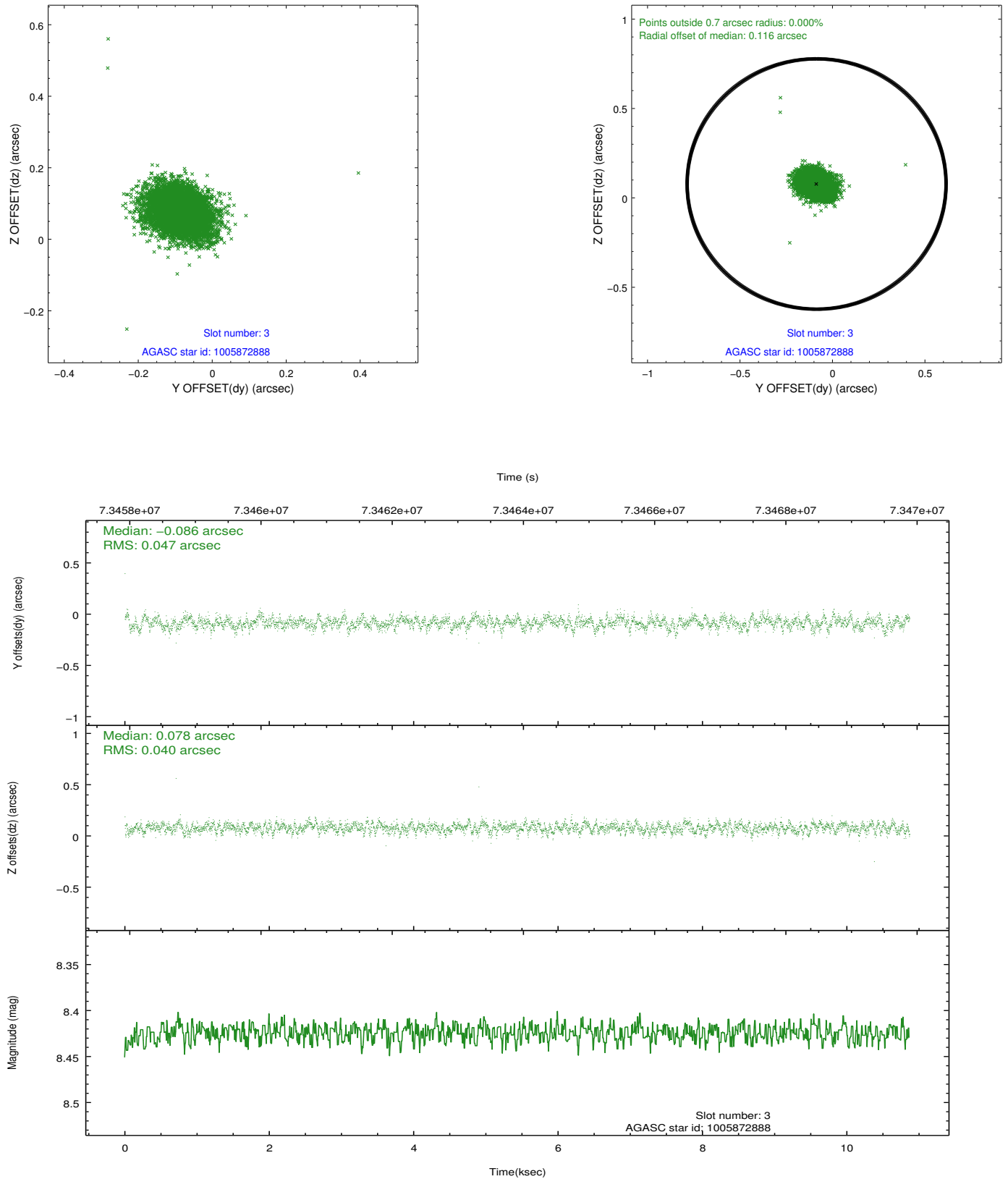


Slot Statistics

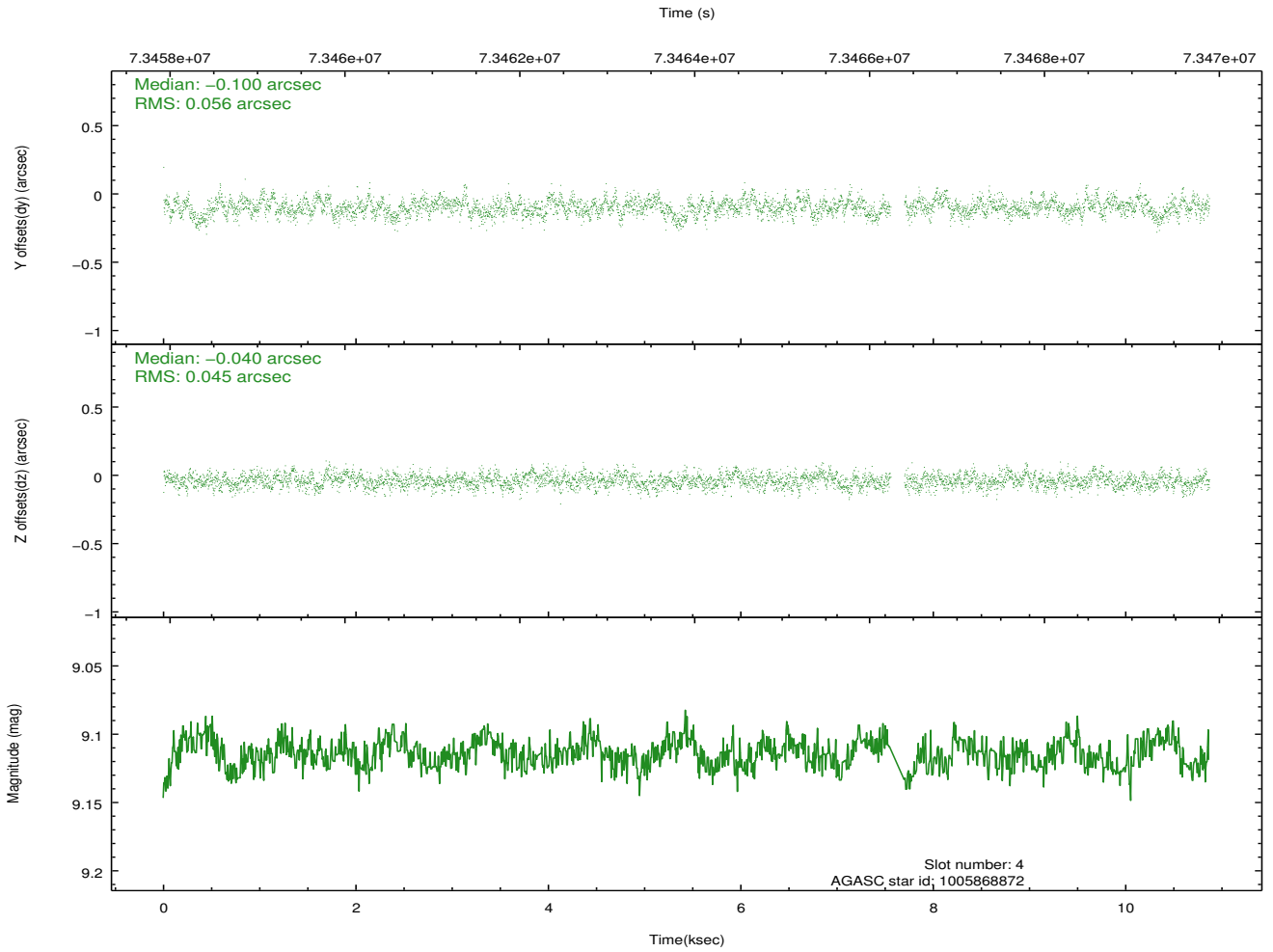
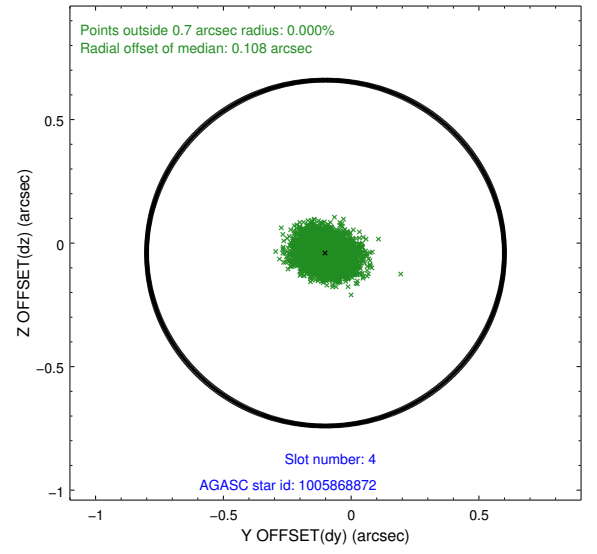
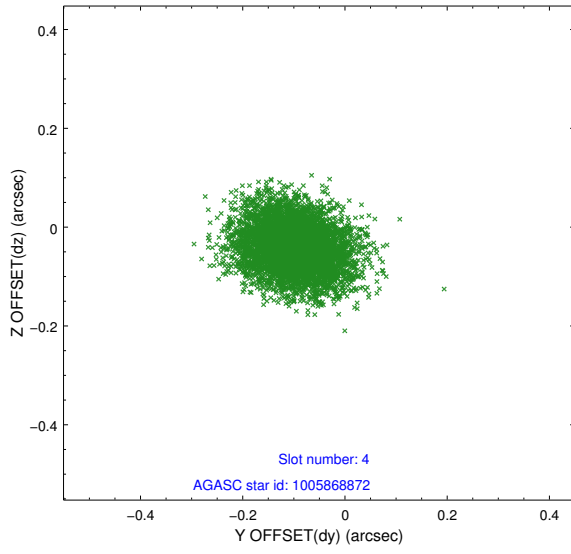
slot	status	id	mag	n_pts	med_dy	med_dz	dr1	dr2	ra	dec	mean_y	mean_z
0	FID	ACIS-S-2	7.12	2651	-0.006	-0.023	0.006	0.010	0.000000	0.000000	-752.74	-1724.30
1	FID	ACIS-S-4	7.21	2651	0.037	0.009	0.005	0.009	0.000000	0.000000	2160.41	183.66
2	FID	ACIS-S-5	7.24	2651	-0.062	0.023	0.006	0.010	0.000000	0.000000	-1804.98	177.98
3	GUIDE	1005872888	8.42	5300	-0.086	0.078	0.064	0.107	128.718363	-44.887099	-995.13	-418.33
4	GUIDE	1005868872	9.11	5225	-0.100	-0.040	0.076	0.125	128.945114	-44.744416	-1600.54	64.06
5	GUIDE	1068238552	9.30	5291	-0.013	-0.050	0.075	0.124	128.941120	-45.368483	615.16	435.70
6	GUIDE	1068399176	9.10	5302	0.049	0.141	0.090	0.143	129.539137	-45.338406	257.41	1909.80
7	GUIDE	1068253552	9.87	5294	0.146	-0.127	0.111	0.187	127.845362	-45.516165	1627.68	-2194.45

2.4 Star Slots

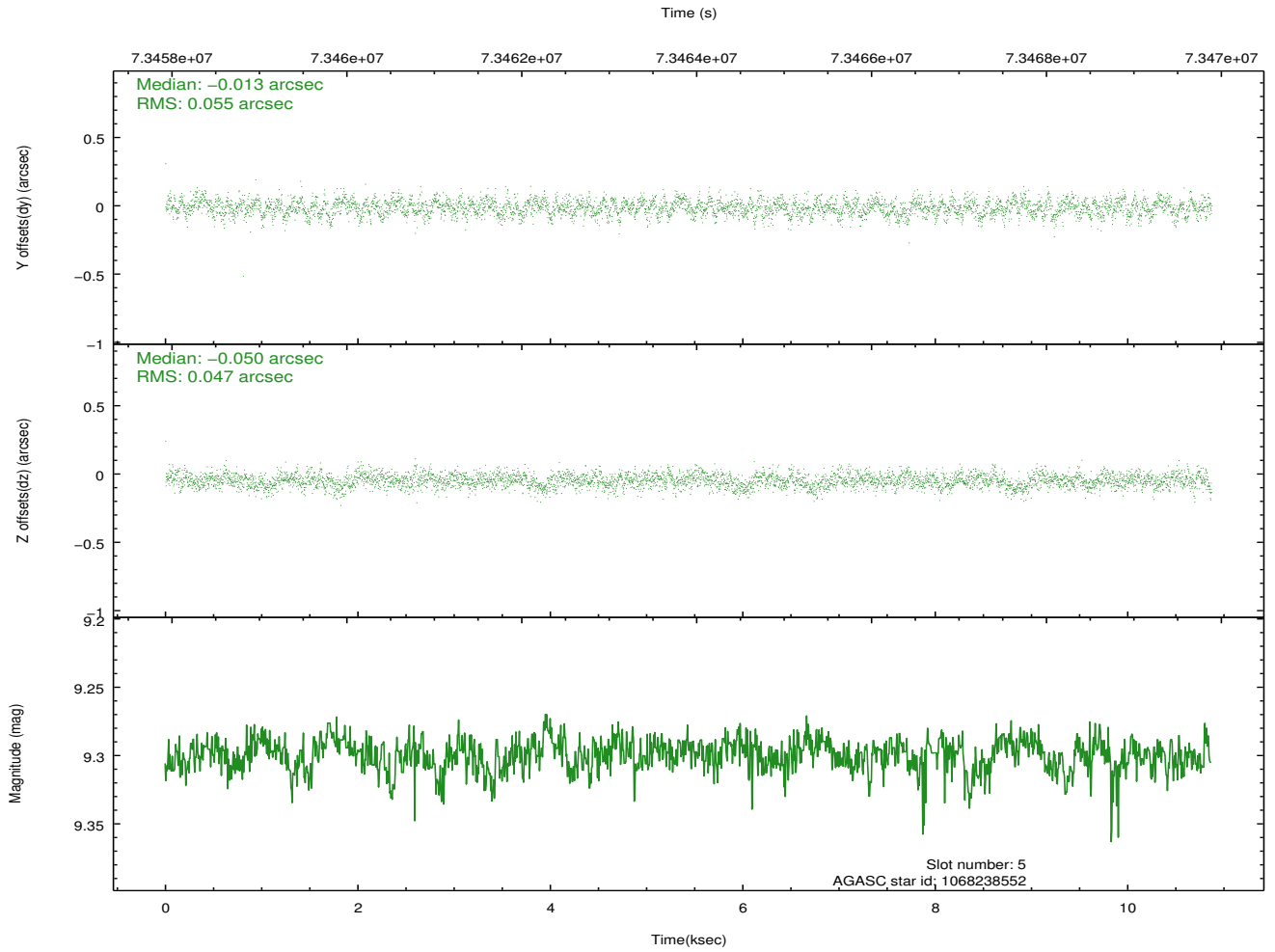
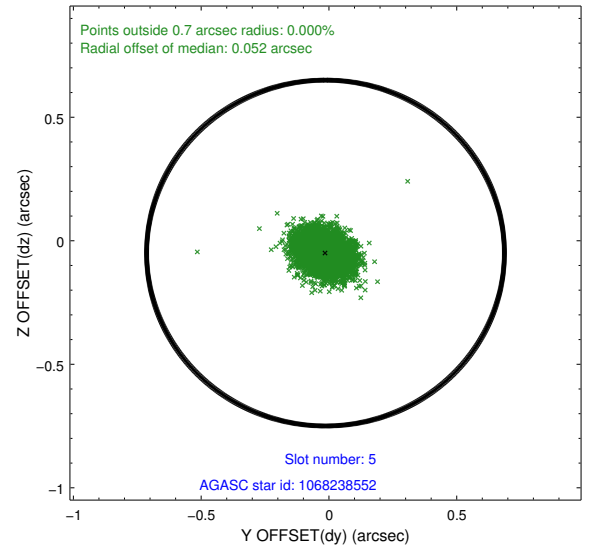
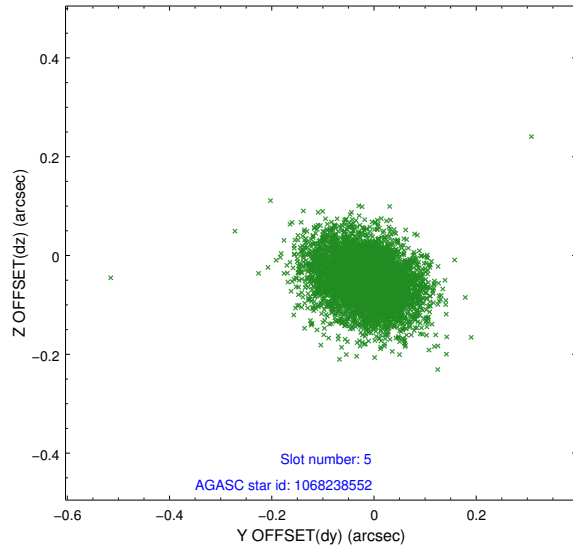
2.4.1 Slot 3



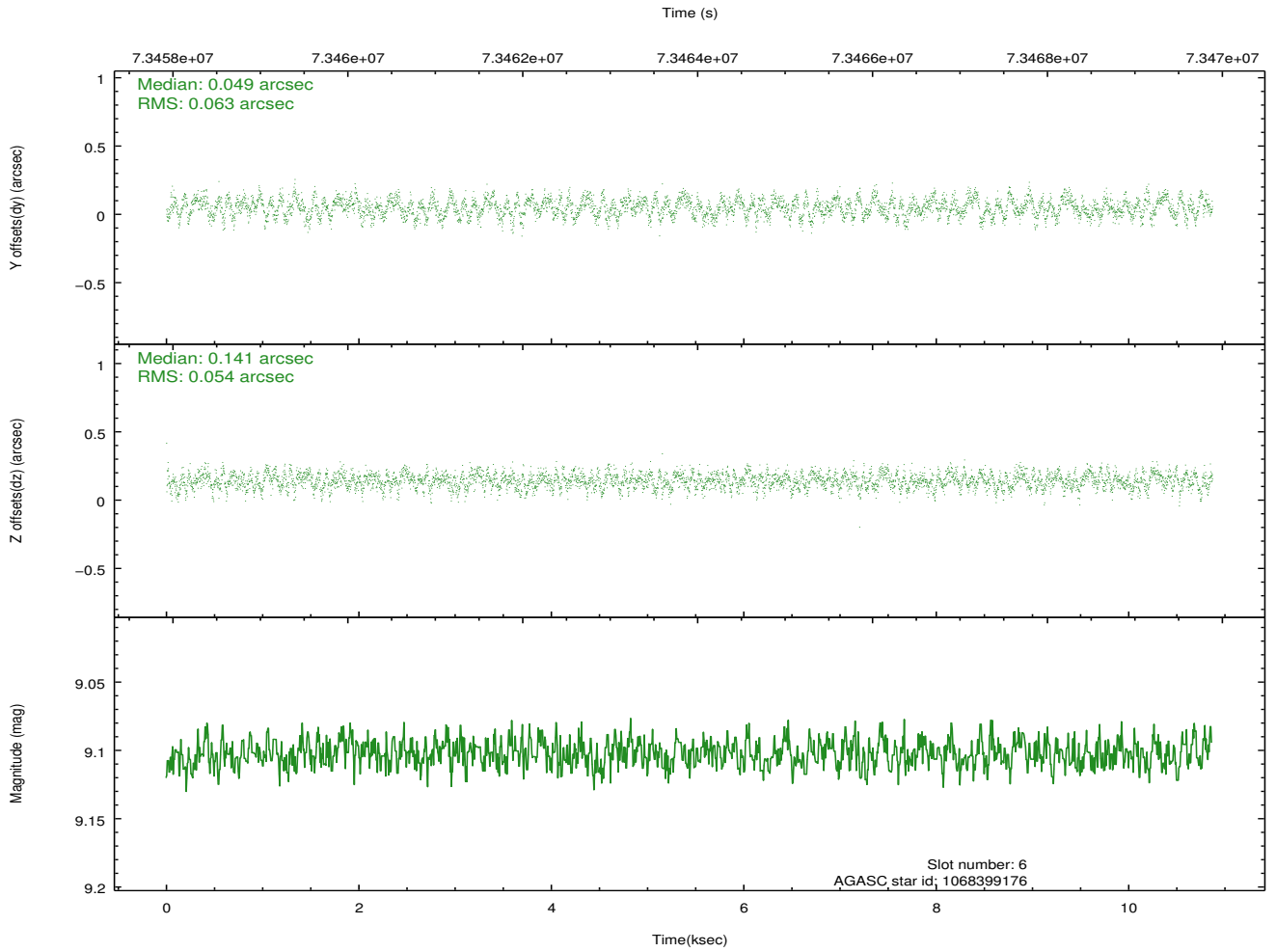
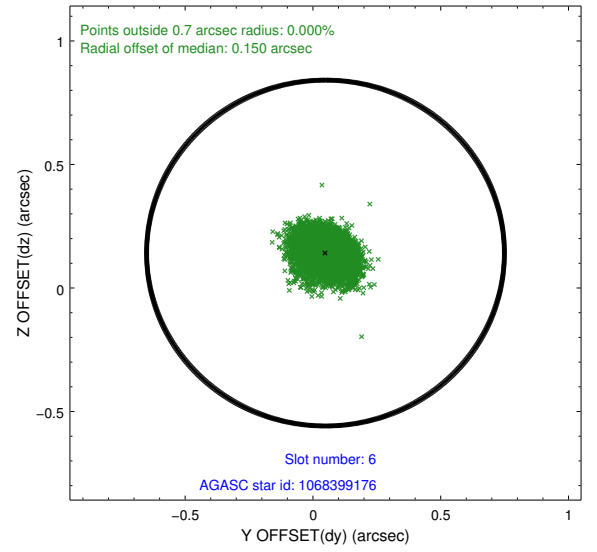
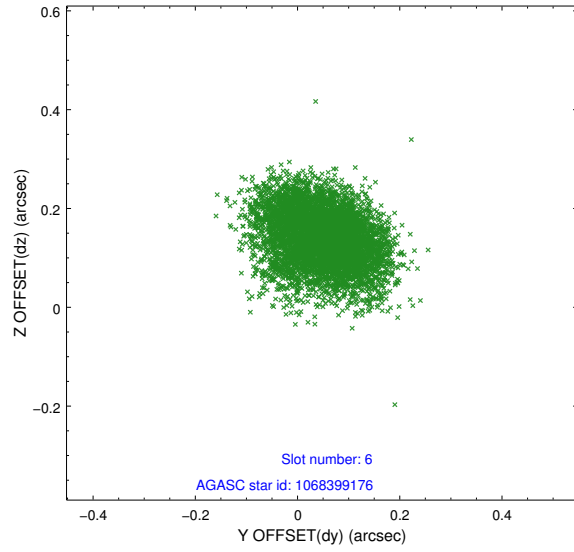
2.4.2 Slot 4



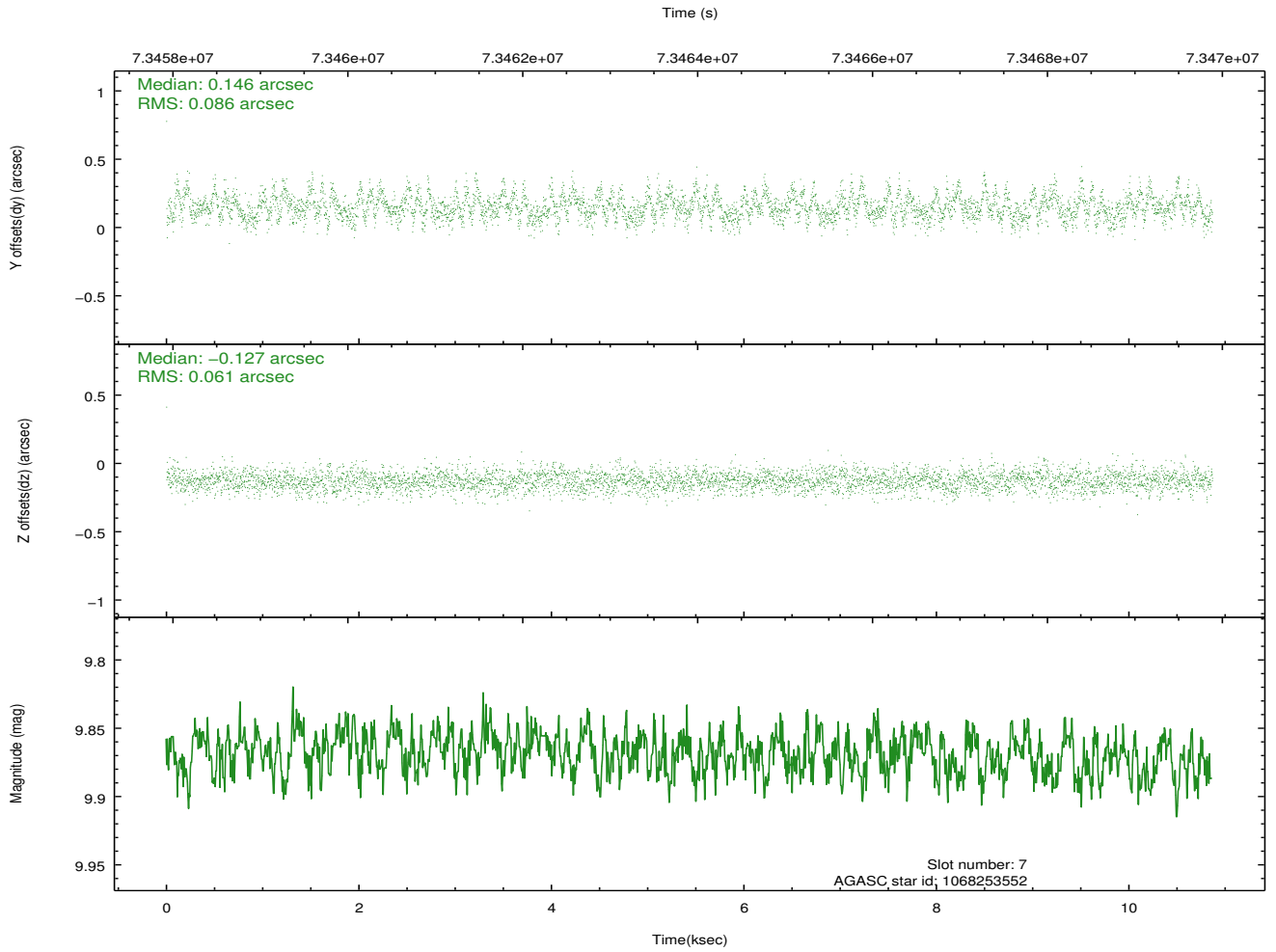
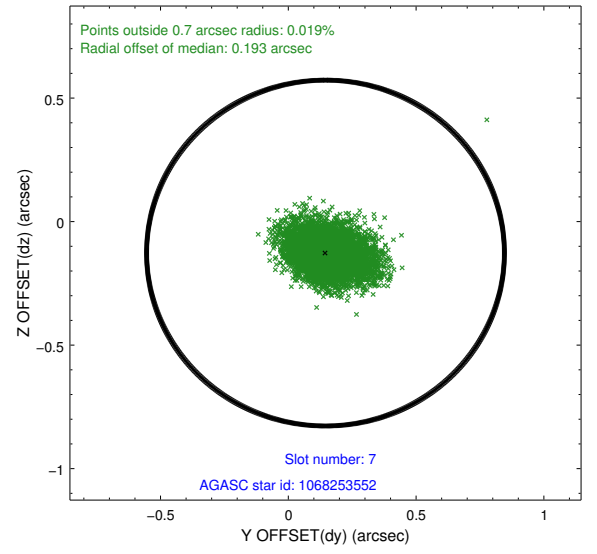
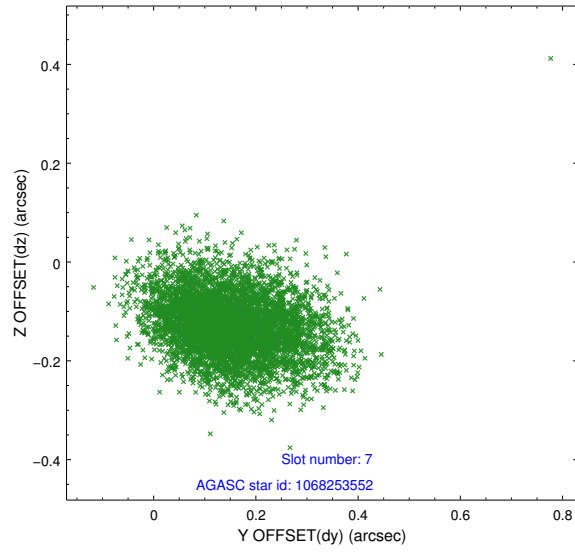
2.4.3 Slot 5



2.4.4 Slot 6

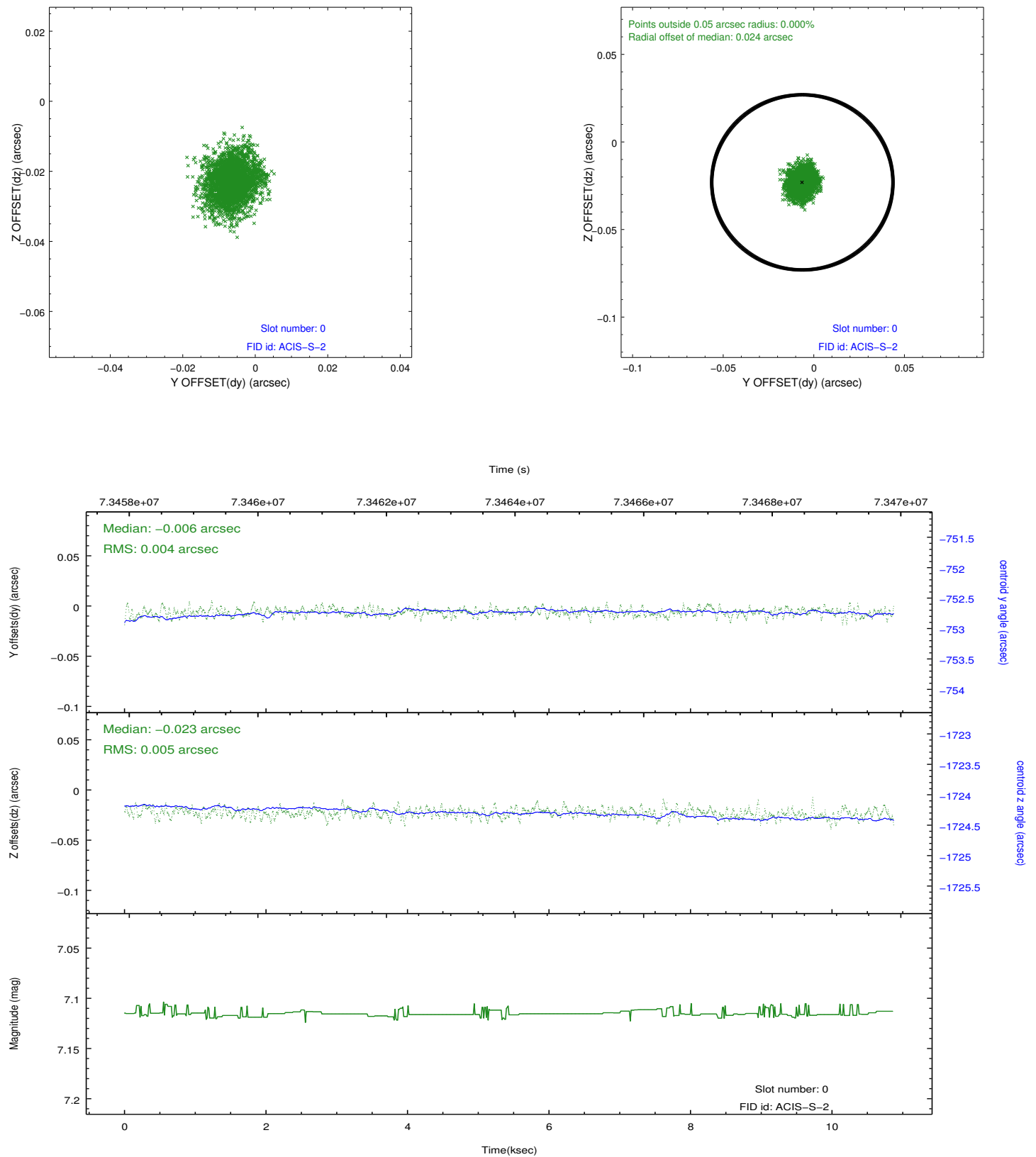


2.4.5 Slot 7

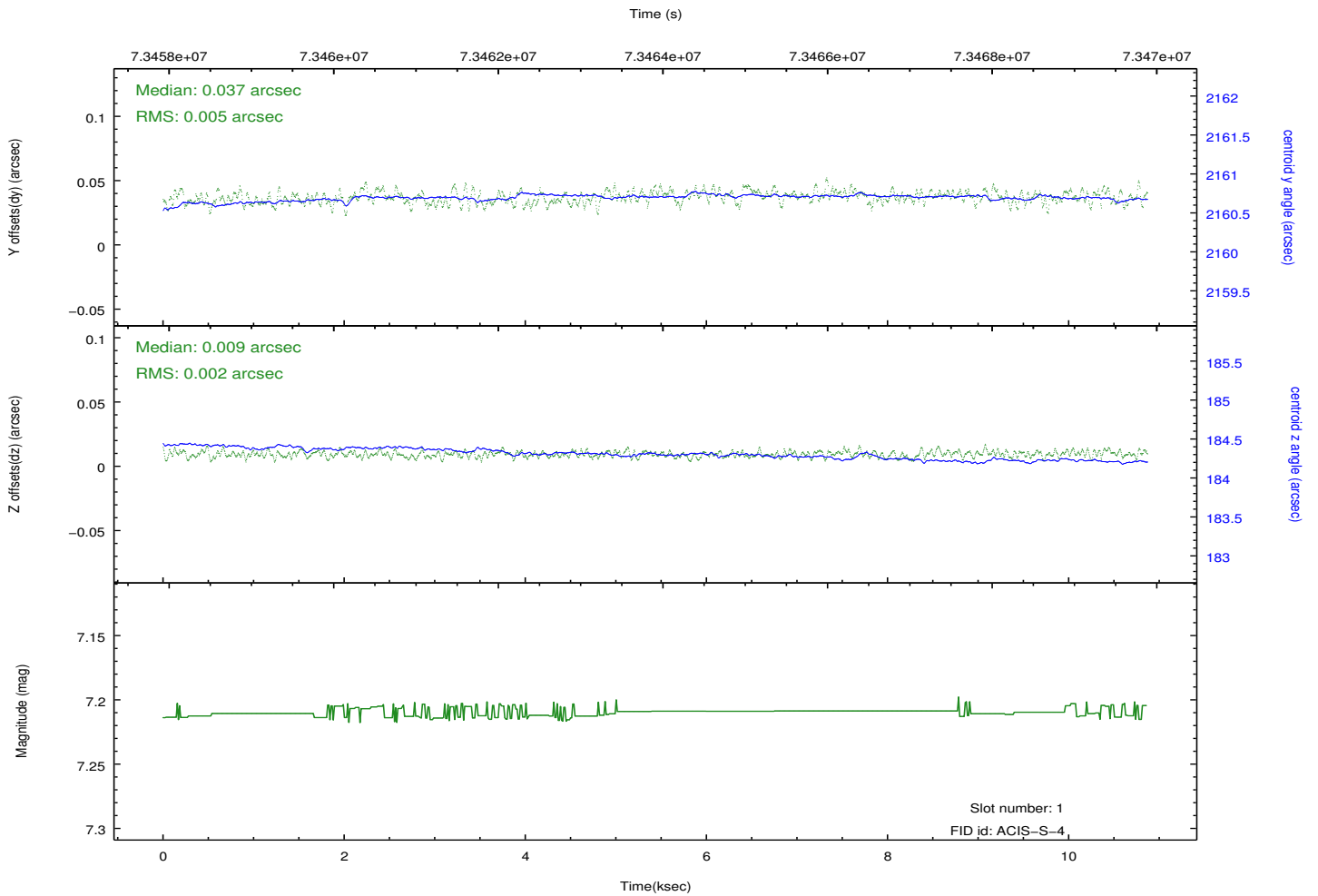
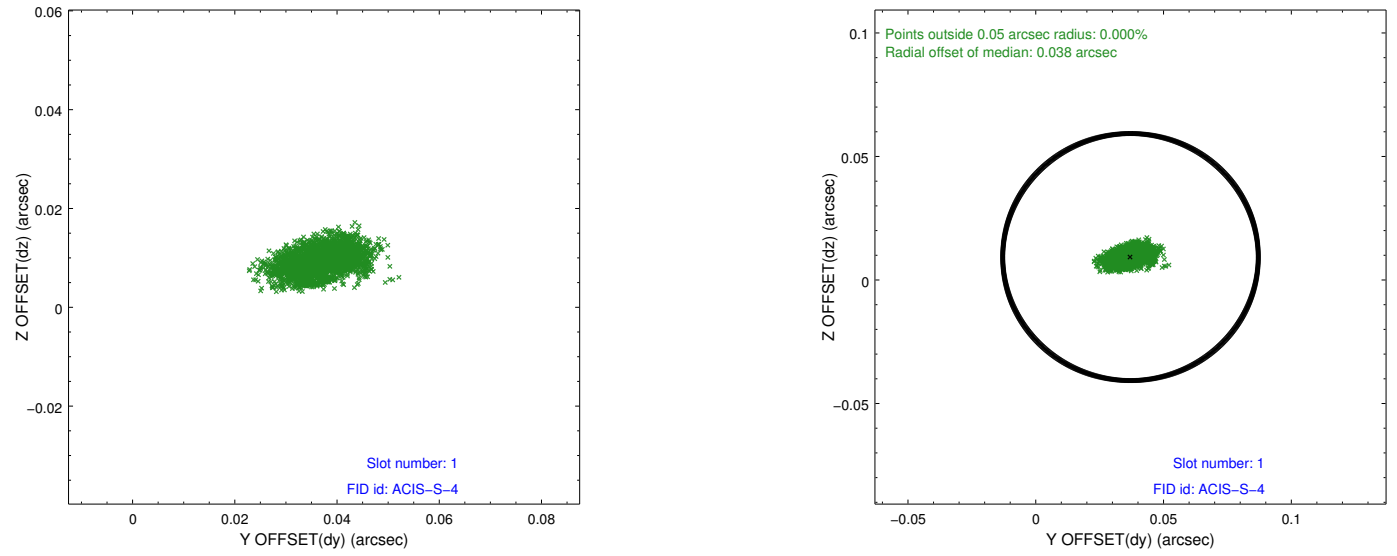


2.5 FID Slots

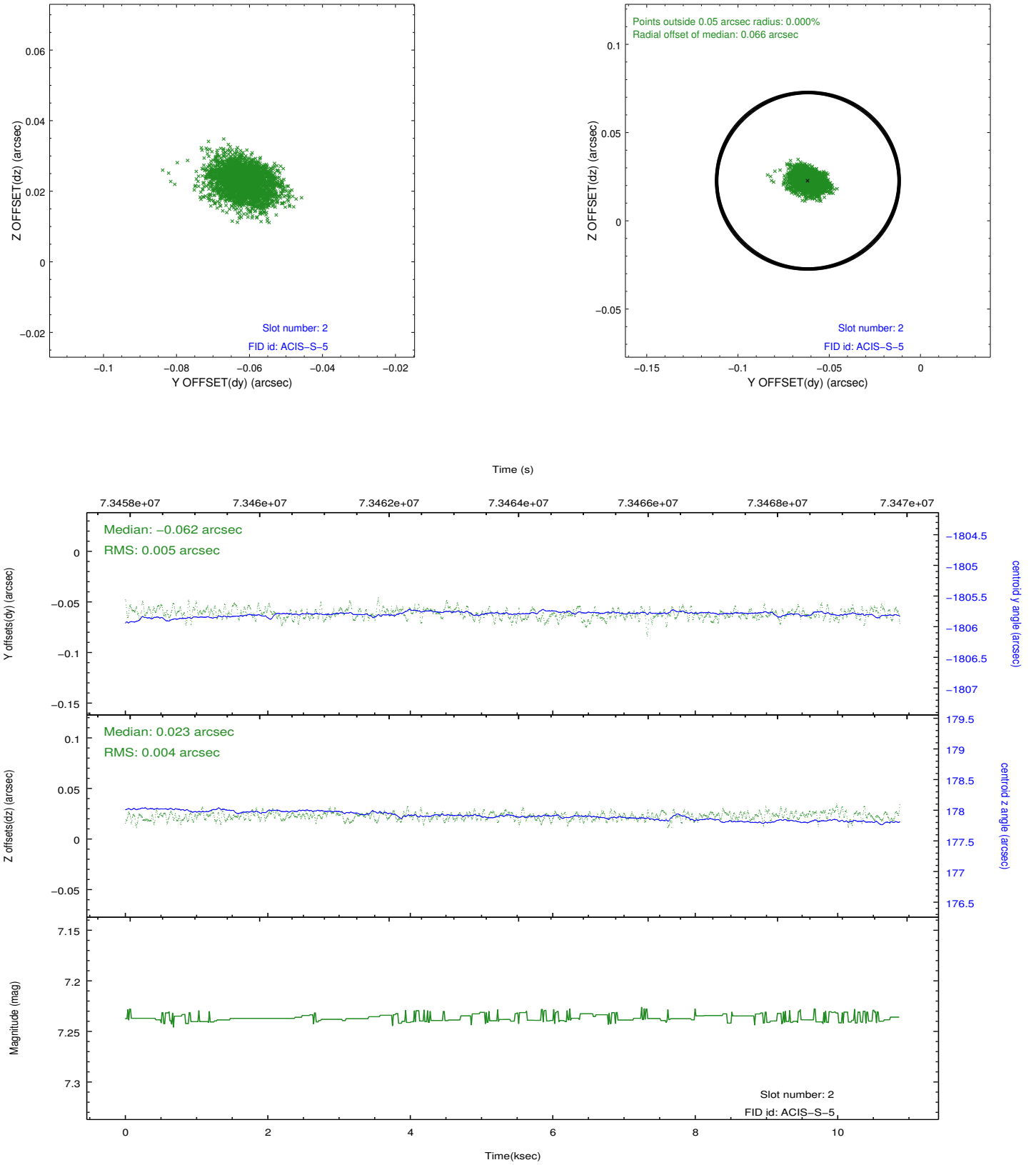
2.5.1 Slot 0



2.5.2 Slot 1



2.5.3 Slot 2



A Summary

A.1 Status

V&V Scientist	Jen Lauer
V&V Date (YYYY-MM-DD)	2012.08.29
V&V Edition	1
V&V Disposition and Status	OK
V&V Charge Time	10.866

A.2 Comments

Roll constraint met.