

V&V Reference Report

L2 ASCDS Version : 7.6.10

Observation 117 - L2 Version 001
Chandra X-Ray Center

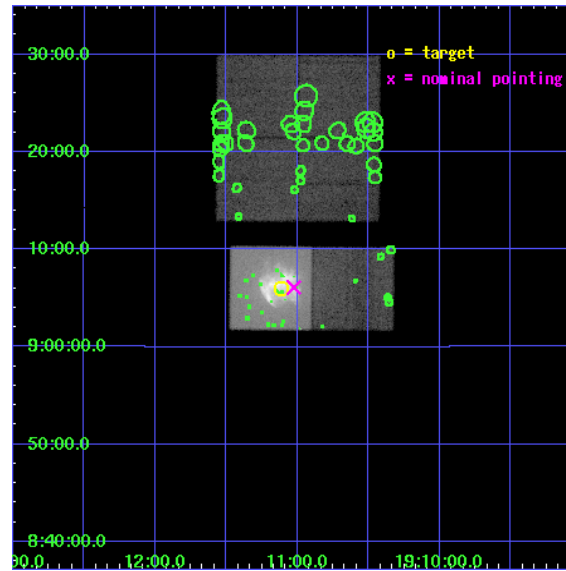
L2 Processing Date : May 30 2007

Contents

1	Front	2
2	OBI	3
2.1	OBI	3
2.1.1	Images	3
2.1.2	Bias	3
2.1.3	Parameters	4
2.1.4	Events	4
2.2	Compared Parameters	5
2.3	Aspect	6
2.4	Star Slots	9
2.4.1	Slot 3	9
2.4.2	Slot 4	10
2.4.3	Slot 5	11
2.4.4	Slot 6	12
2.4.5	Slot 7	13
2.5	FID Slots	14
2.5.1	Slot 0	14
2.5.2	Slot 1	15
2.5.3	Slot 2	16
3	Point Sources	17
A	Summary	18
A.1	Status	18
A.2	Comments	18

1 Front

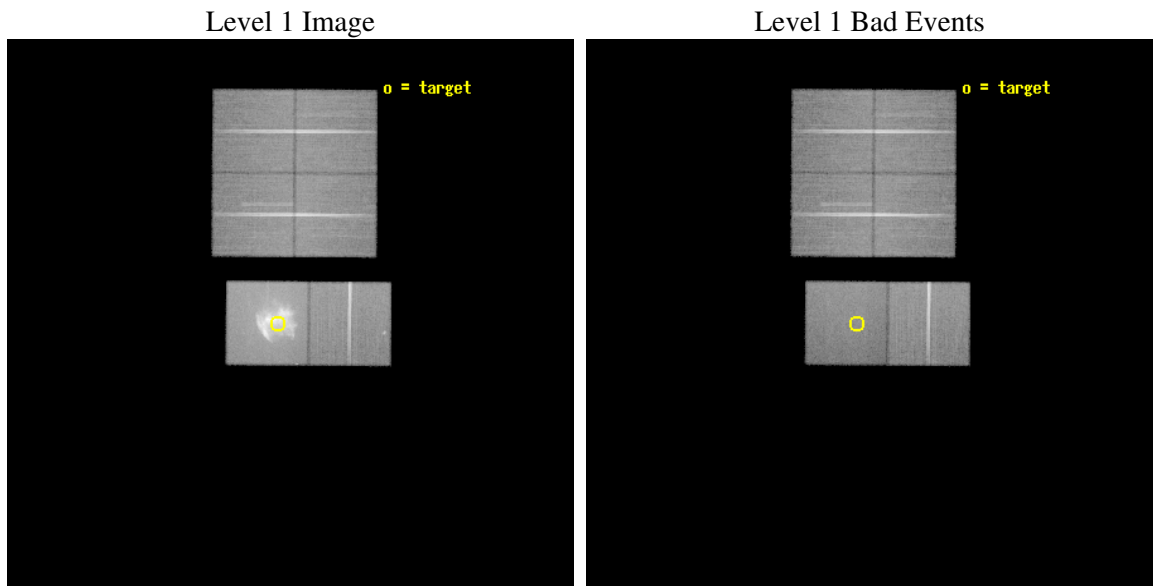
seq_num	500004
obs_id	117
title	ACIS OBSERVATION OF W49B
observer	DR STEPHEN HOLT
object	W49B
dtcycle	0
cycle	P
ra_targ	287.7775
dec_targ	9.1
ra_nom	287.75627717013
dec_nom	9.1017044819776
roll_nom	180.38794601845
revision	3
ontime	54540.800050795
livetime	53850.171600025
ontime0	54537.559080556
ontime1	54534.318110317
ontime2	54540.800050795
ontime3	54537.559030712
ontime6	54540.800050795
ontime7	54540.800050795
l2events	612444



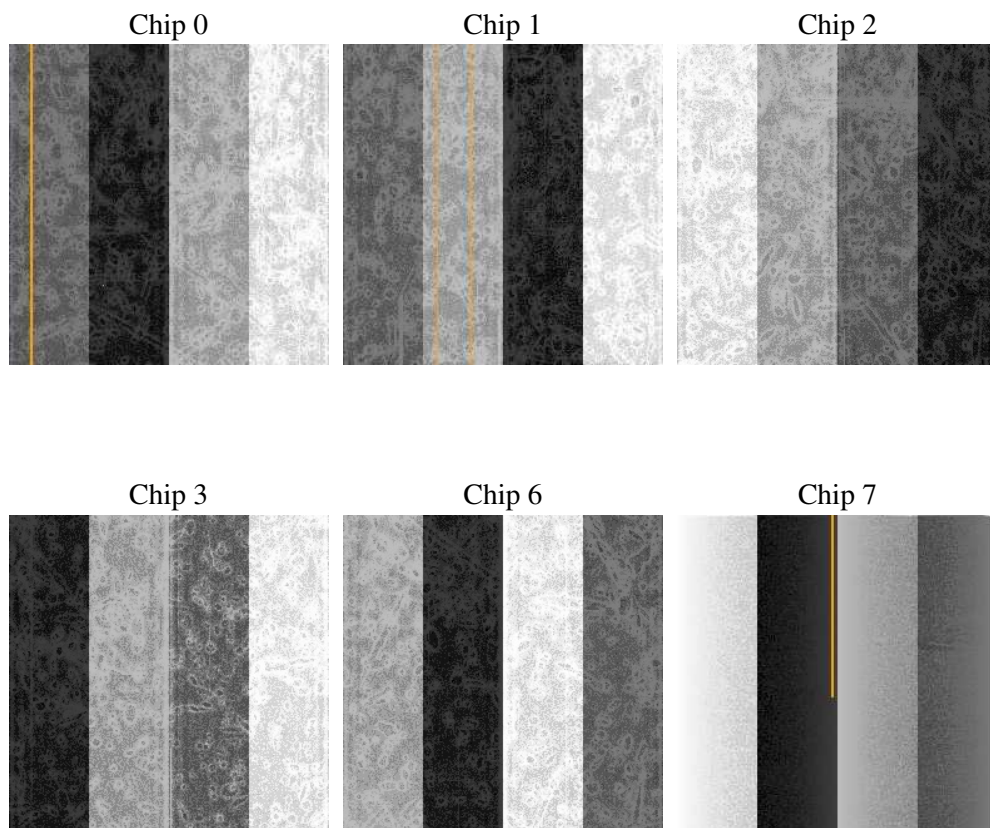
2 OBI

2.1 OBI

2.1.1 Images



2.1.2 Bias



2.1.3 Parameters

obi_num	0
ascdsver	7.6.10
caldsver	3.4.0
date	2007-05-30T16:58:00
revision	3

sched_exp_time	54409.834000
ontime	54540.800050795
ontime0	54537.559080556
ontime1	54534.318110317
ontime2	54540.800050795
ontime3	54537.559030712
ontime6	54540.800050795
ontime7	54540.800050795
l1events	2507688

2.1.4 Events

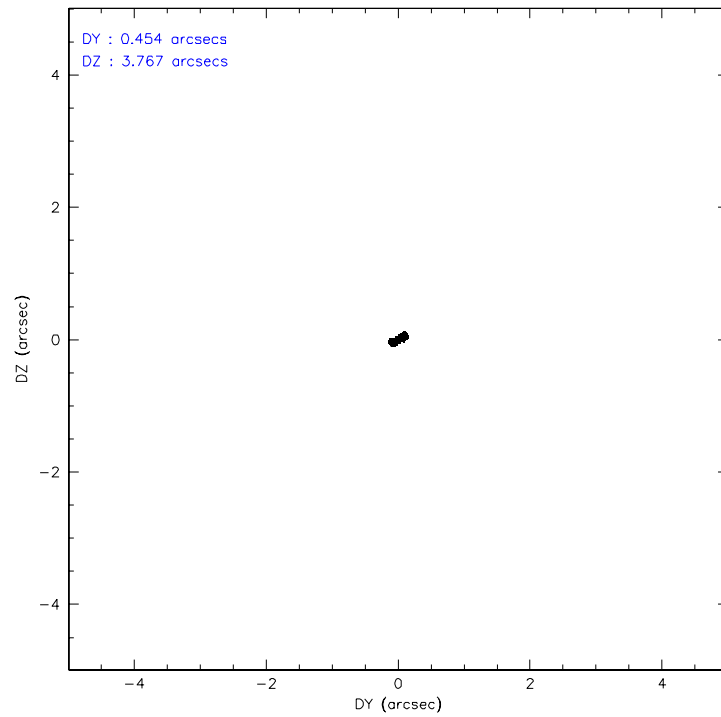
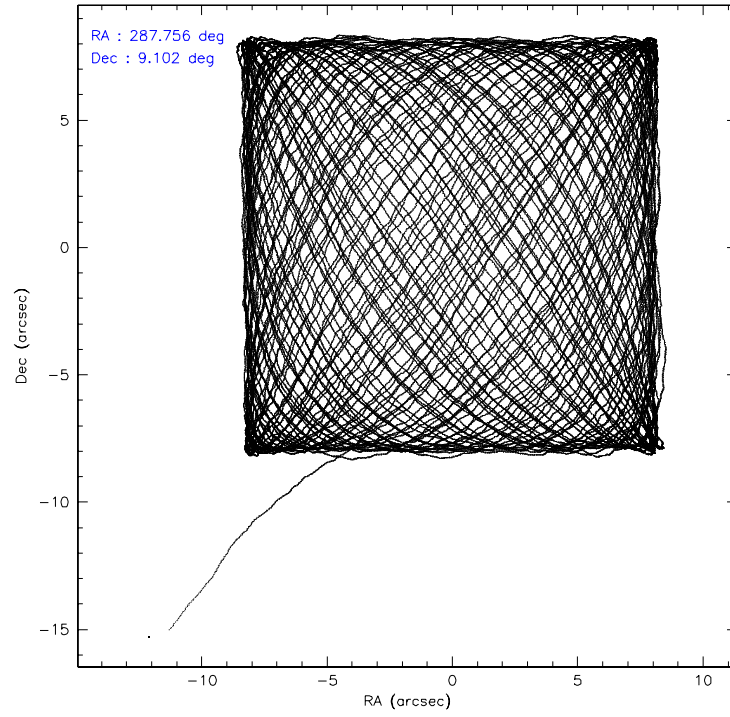
	ccd 0	ccd 1	ccd 2	ccd 3	ccd 6	ccd 7
level 1 events	358871	333373	370480	363166	377280	704518
rejected events	318576	292857	332863	324821	331570	256547
rejected %	88%	87%	89%	89%	87%	36%

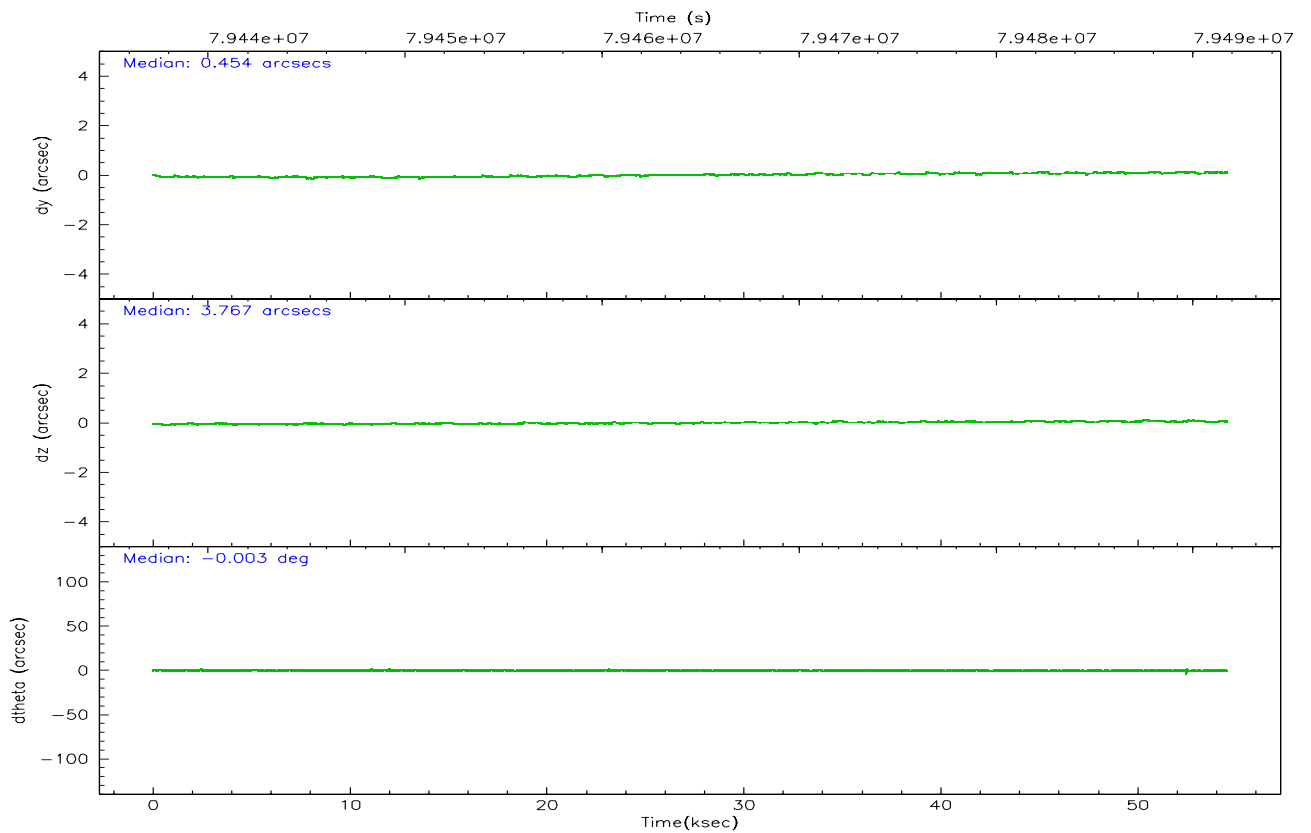
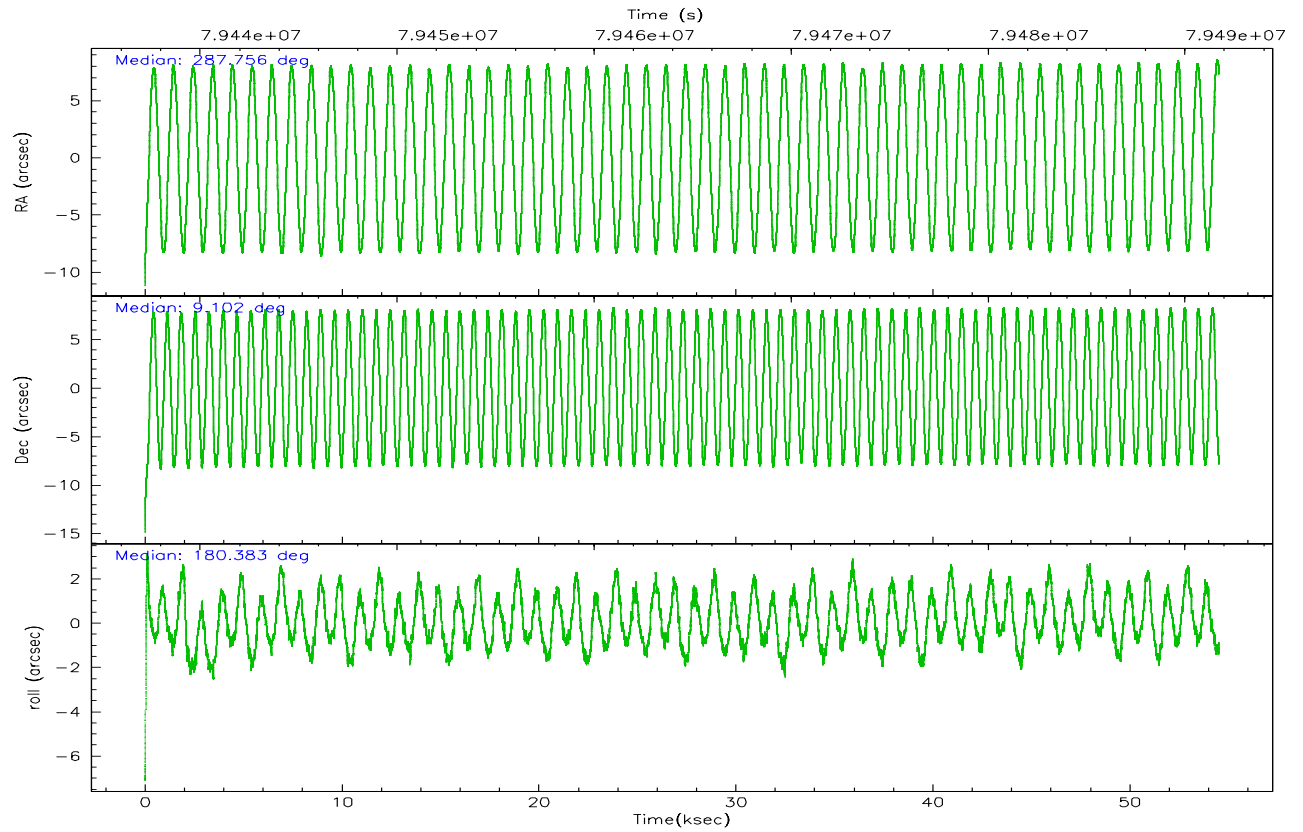
	ccd 0	ccd 1	ccd 2	ccd 3	ccd 6	ccd 7
grade 0 events	17210	16497	15947	16992	20970	73618
	4%	4%	4%	4%	5%	10%
grade 1 events	165	164	161	171	183	490
	0%	0%	0%	0%	0%	0%
grade 2 events	8567	8088	8032	7474	8562	104384
	2%	2%	2%	2%	2%	14%
grade 3 events	4129	4392	3798	3847	4385	47737
	1%	1%	1%	1%	1%	6%
grade 4 events	3891	4462	3796	3745	4282	47768
	1%	1%	1%	1%	1%	6%
grade 5 events	12093	12512	10921	12501	14194	43621
	3%	3%	2%	3%	3%	6%
grade 6 events	6936	7544	6454	6700	7966	177303
	1%	2%	1%	1%	2%	25%
grade 7 events	305880	279714	321371	311736	316738	209597
	85%	83%	86%	85%	83%	29%

2.2 Compared Parameters

Parameter	Planned	Actual	Parameter	Planned	Actual
Instrument	ACIS	ACIS	Obspar format version number	6	6
Detector	ACIS-012367	ACIS-012367	Obspar file type	PREDICTED	ACTUAL
Grating	NONE	NONE	Obspar update status	NONE	UPDATED
Data mode	FAINT	FAINT	Number of optional ACIS chips dropped	0	0
Observation mode	POINTING	POINTING	On-chip summing requested	N	N
Pointing RA	287.780133	287.7562771701336	Subarray requested	NONE	NONE
Pointing Dec	9.115680	9.101704481977587	Alternating exposures requested	N	N
Pointing Roll	180.227550	180.3879460184488	Primary exposure time	3.200000	3.2
SIM focus pos (mm)	-0.684267	-0.6828225247311905			
SIM defocus (mm)	0	0.001444936568705701			
SIM translation stage pos (mm)	-190.132523	-190.1425803651734			
SIM translation stage offset (mm)	0	0.01005778216563158			
Observation start time	79437334.184000	79435990.825808			
Observation start date	2000-07-08T09:54:30	2000-07-08T09:33:10			
Observation end time	79491744.184000	79492053.202874			
Observation end date	2000-07-09T01:01:20	2000-07-09T01:07:33			
Read mode	TIMED	TIMED			

2.3 Aspect



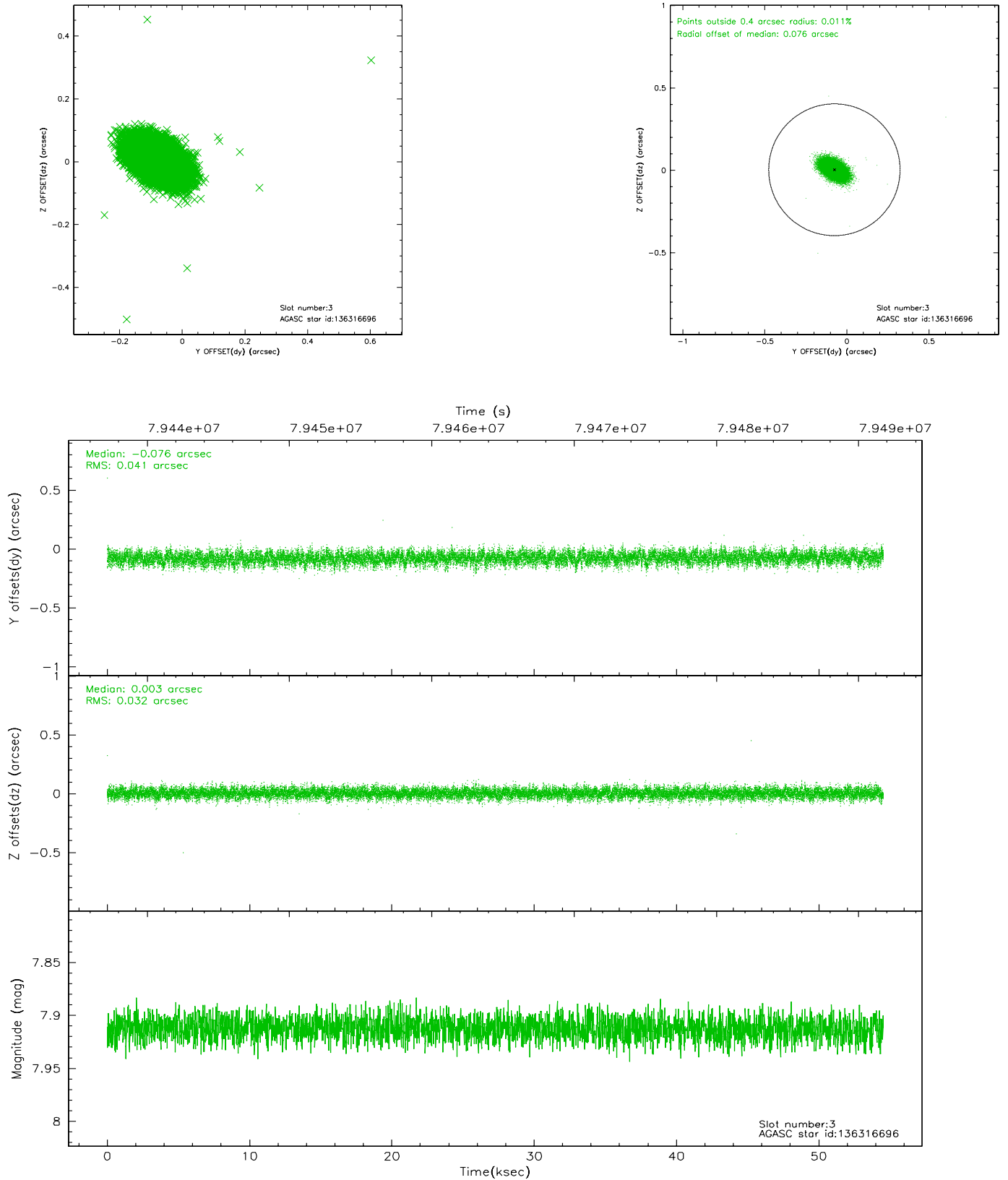


Slot Statistics

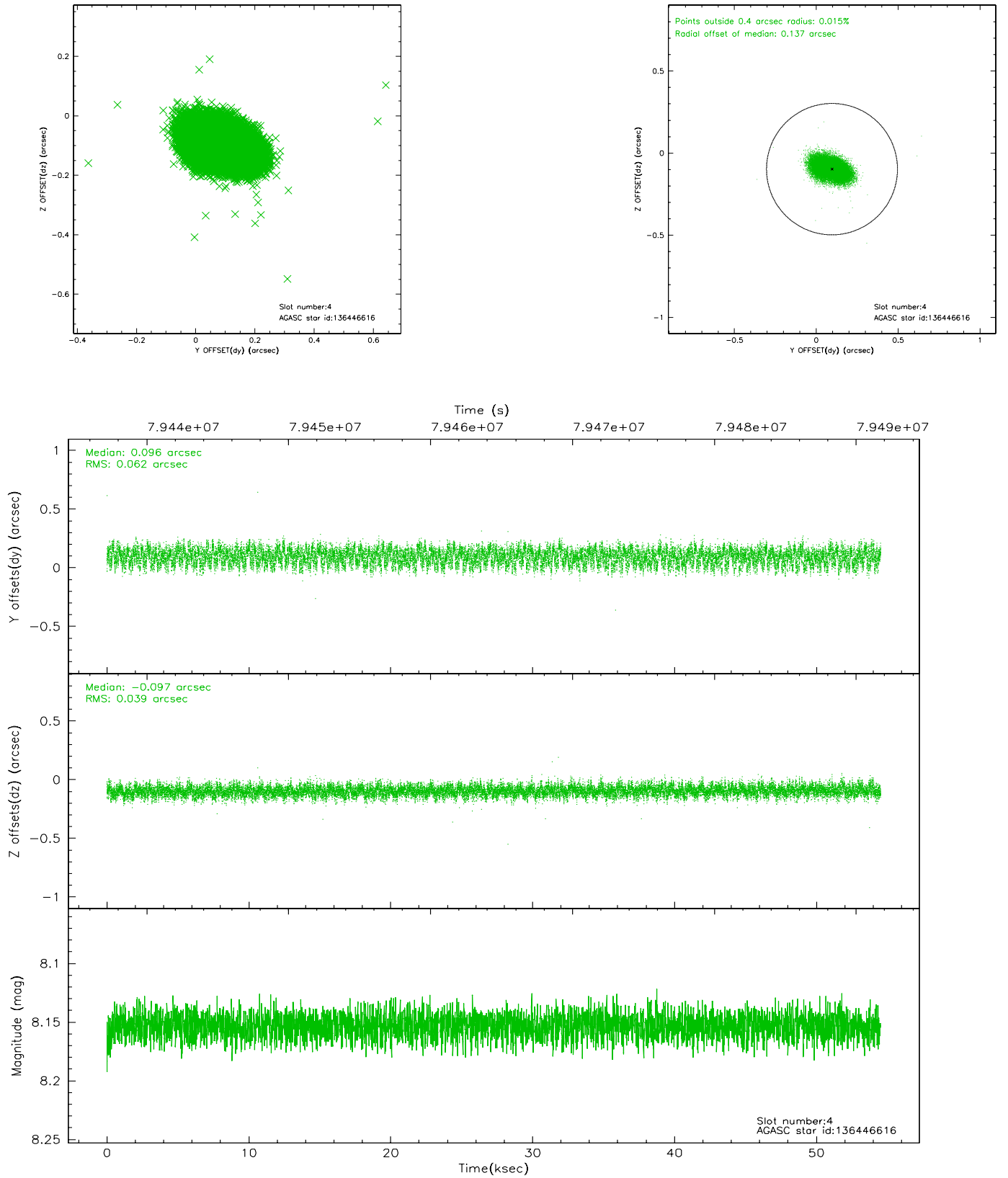
slot	status	id	mag	n_pts	med_dy	med_dz	dr1	dr2	ra	dec	mean_y	mean_z
0	FID	ACIS-S-2	7.12	13301	-0.010	0.002	0.005	0.010	0.000000	0.000000	-753.07	-1724.78
1	FID	ACIS-S-4	7.21	13299	-0.018	0.011	0.006	0.010	0.000000	0.000000	2160.24	183.70
2	FID	ACIS-S-6	7.36	13302	0.001	-0.006	0.007	0.011	0.000000	0.000000	408.93	821.07
3	GUIDE	136316696	7.91	26596	-0.076	0.003	0.054	0.091	287.190166	9.367792	2091.93	-916.97
4	GUIDE	136446616	8.15	26598	0.096	-0.097	0.078	0.126	288.185675	8.610510	-1436.35	1823.84
5	GUIDE	136316960	9.22	26522	0.058	0.102	0.099	0.156	287.104881	9.133555	2399.79	-75.23
6	GUIDE	136979696	9.39	26592	-0.084	0.005	0.085	0.143	287.607746	9.703592	603.47	-2118.48
7	GUIDE	136446432	9.45	26598	0.011	-0.011	0.075	0.123	288.242307	9.270581	-1644.26	-551.87

2.4 Star Slots

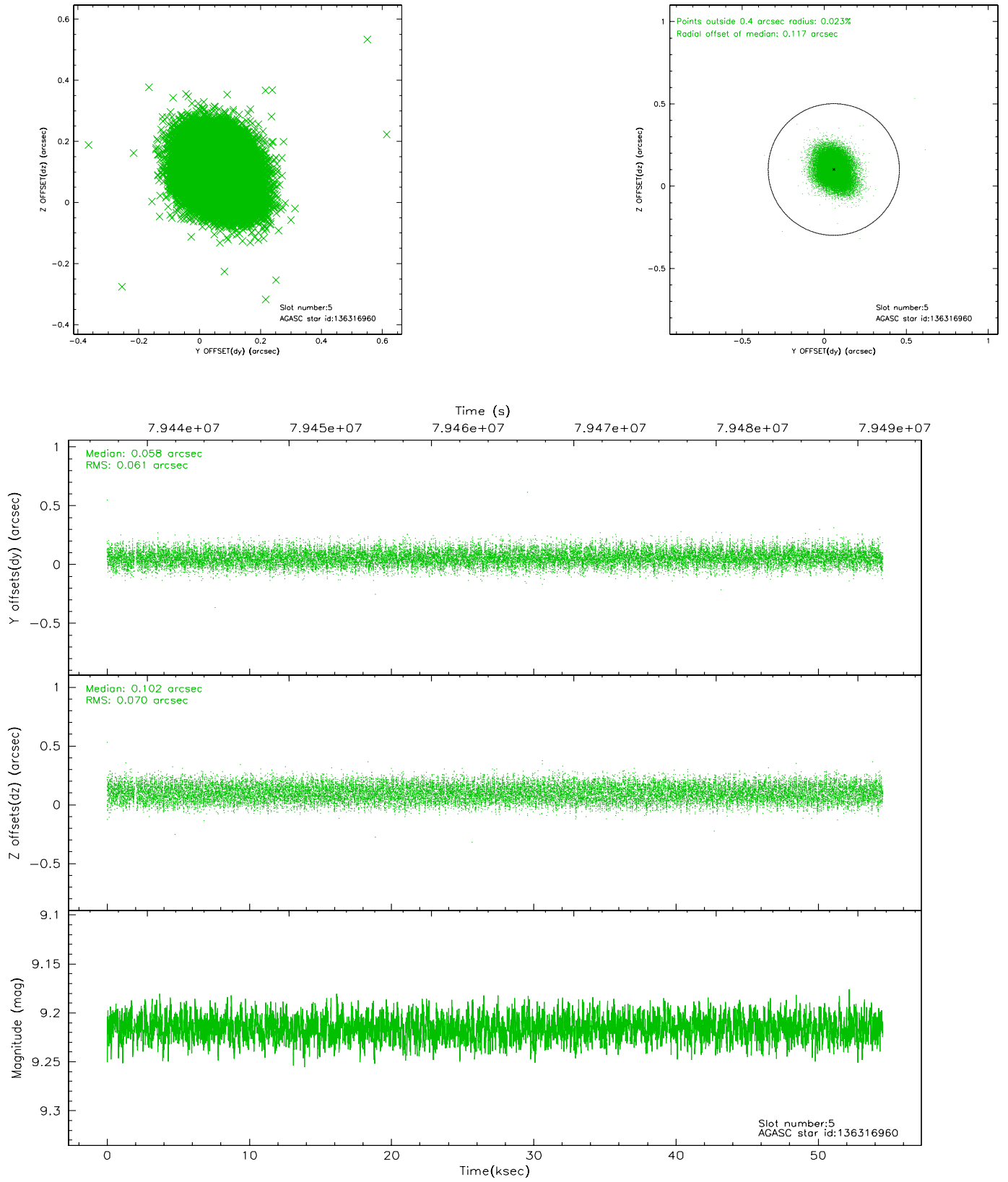
2.4.1 Slot 3



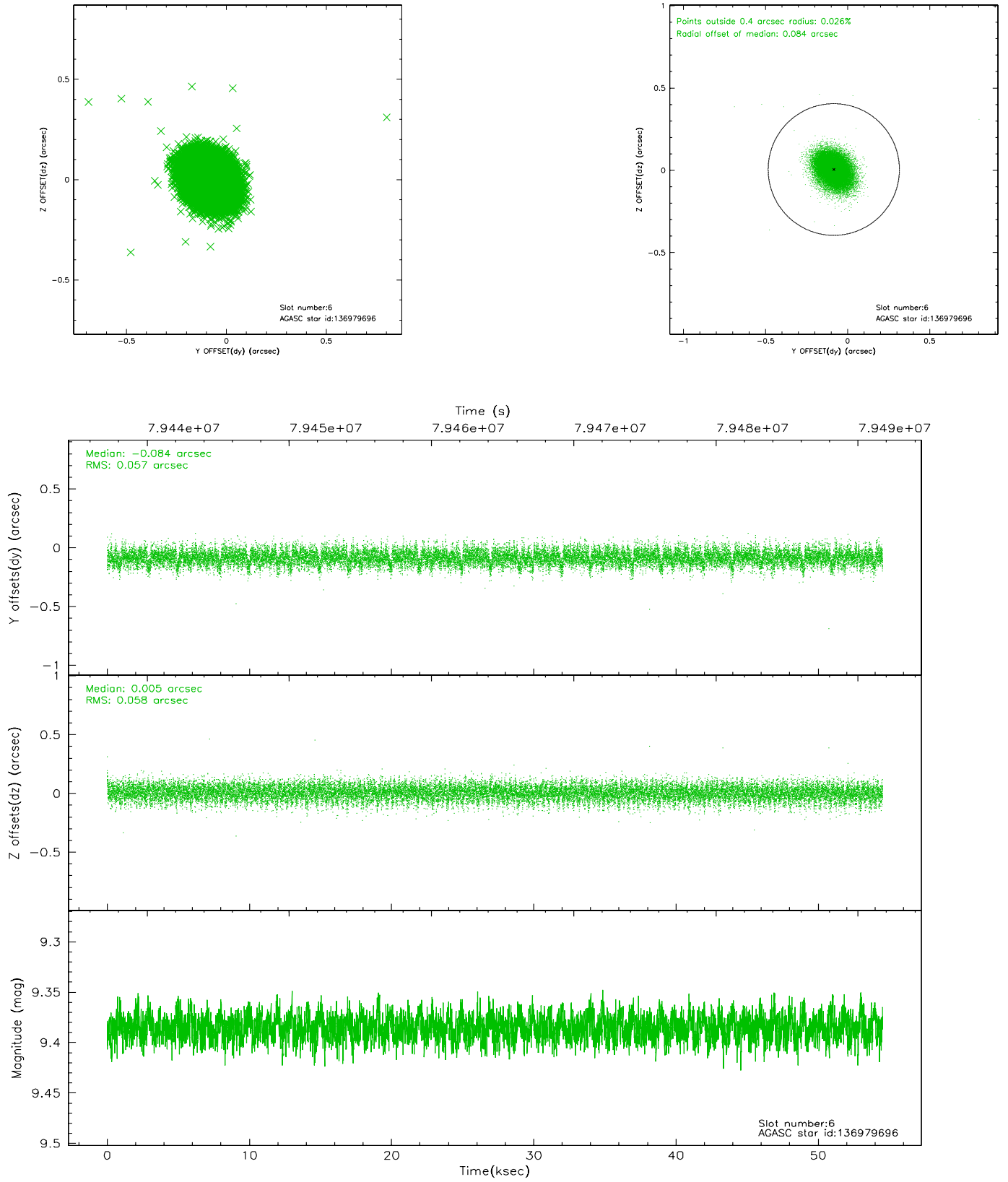
2.4.2 Slot 4



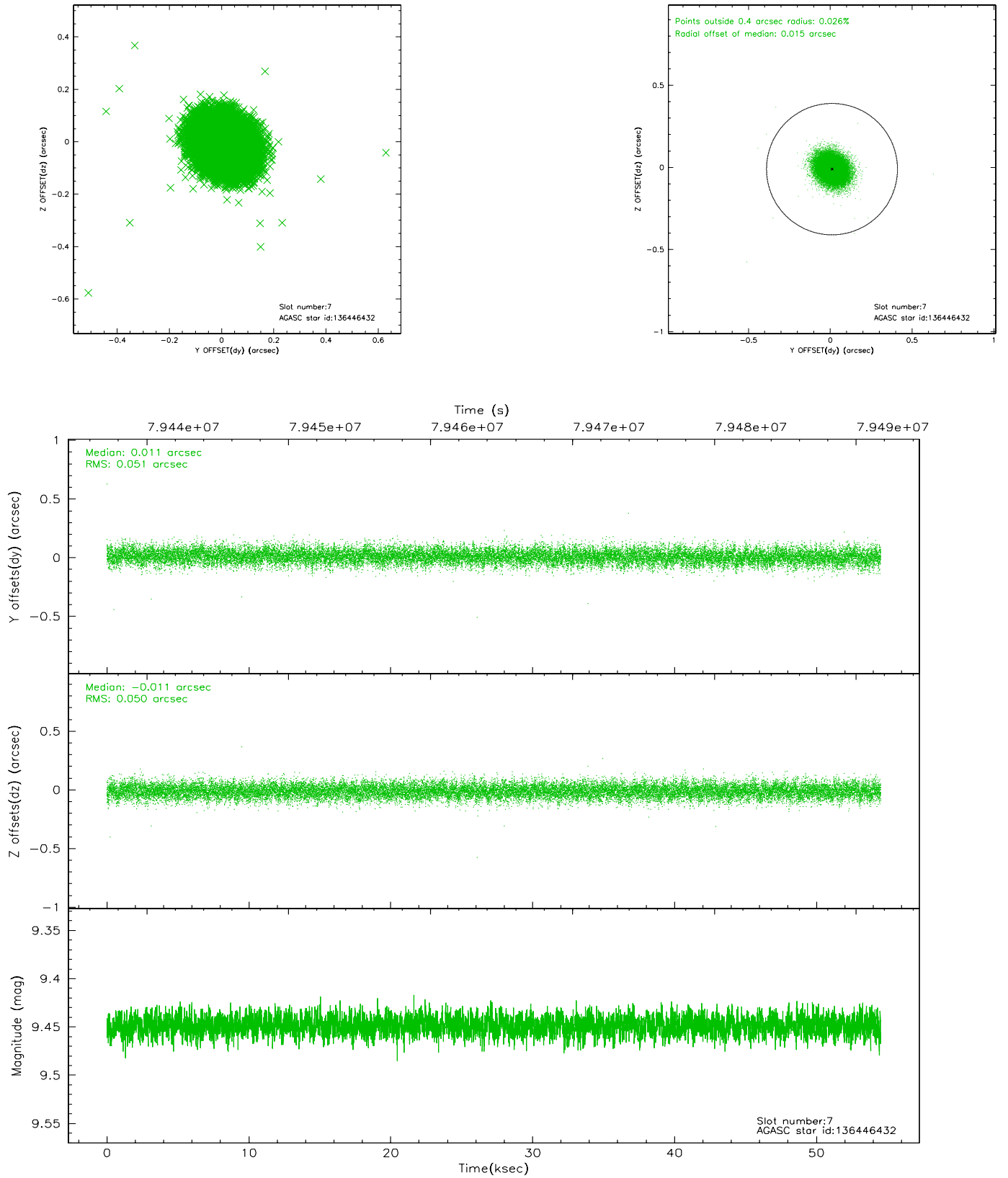
2.4.3 Slot 5



2.4.4 Slot 6

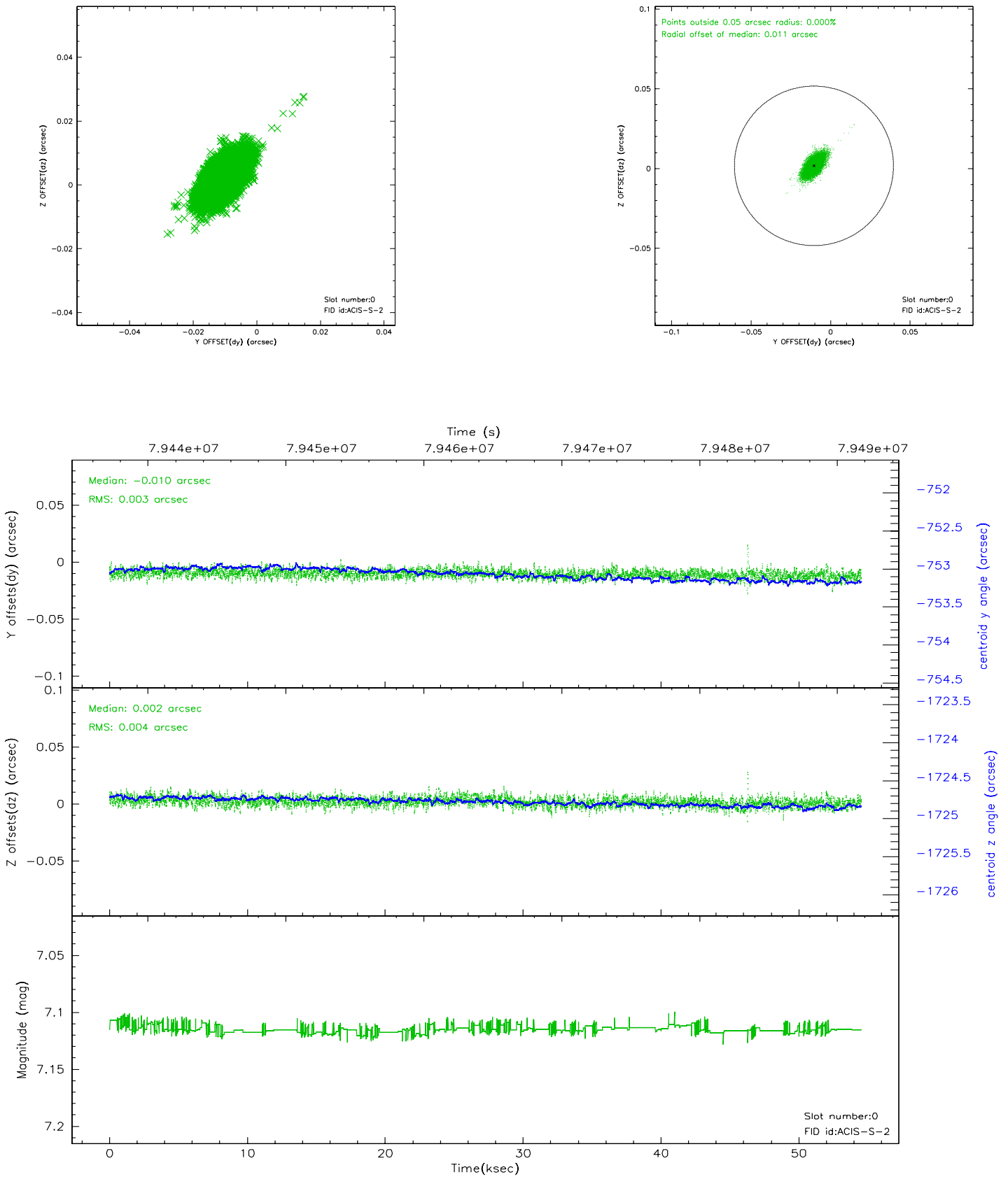


2.4.5 Slot 7

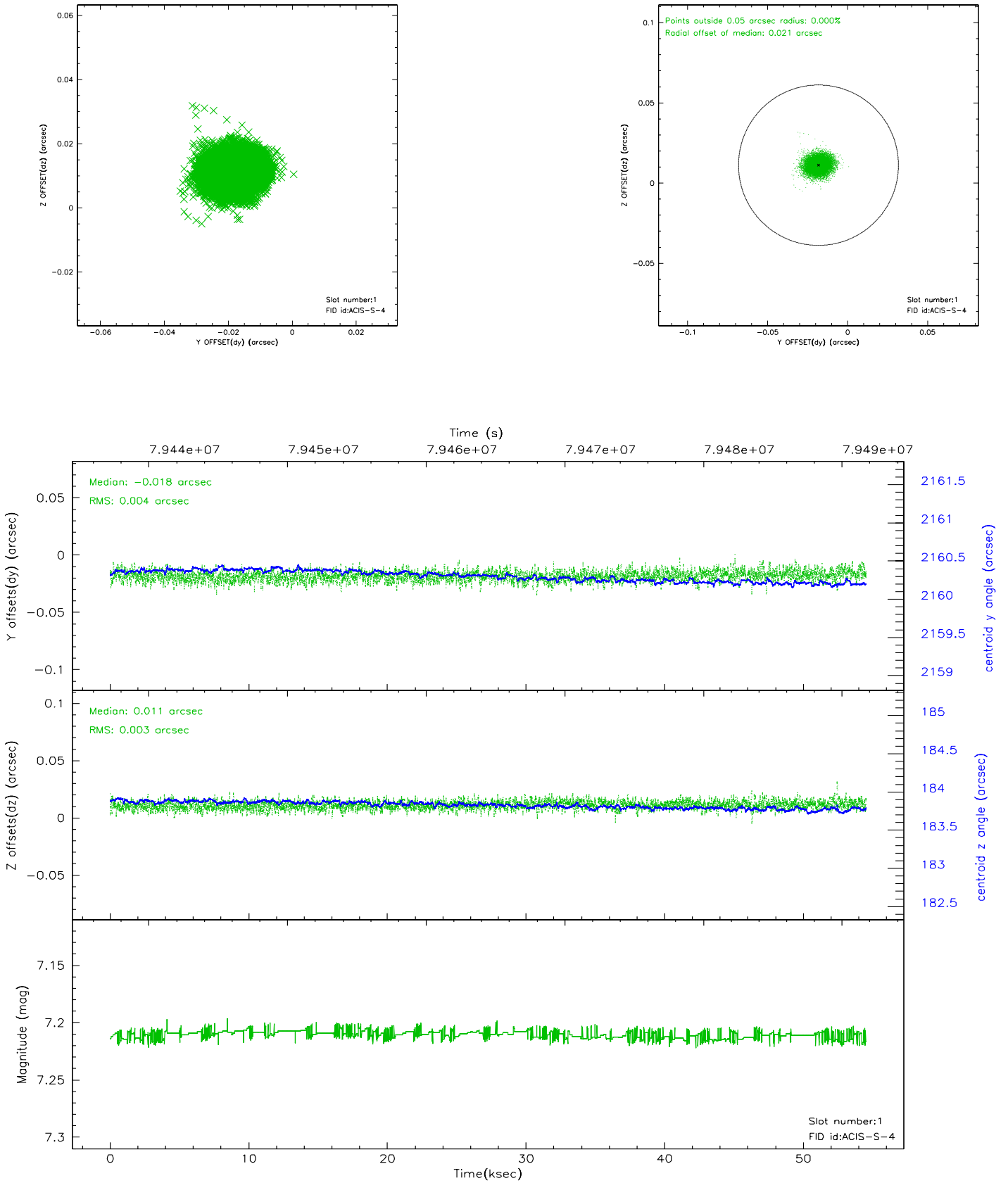


2.5 FID Slots

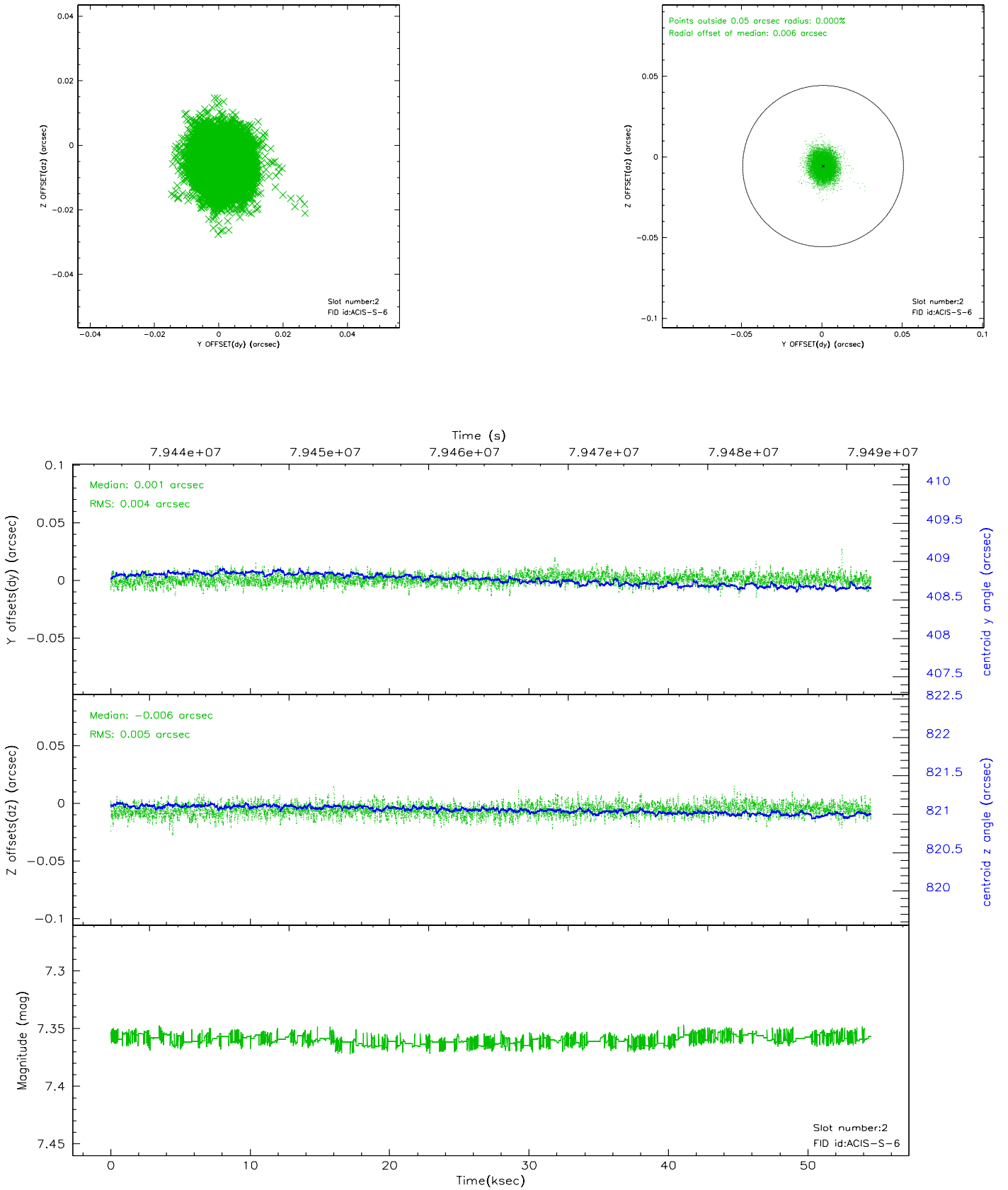
2.5.1 Slot 0



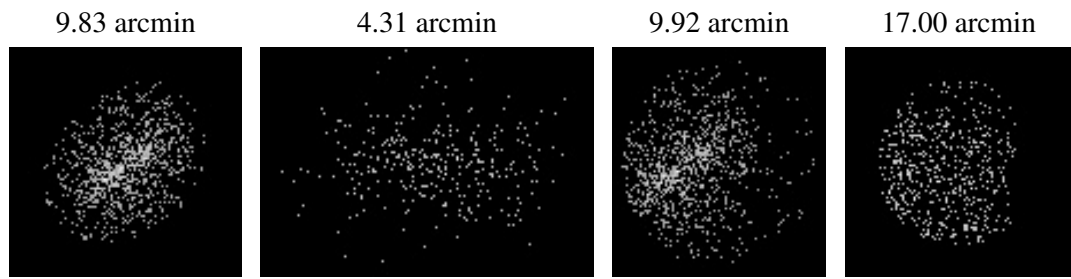
2.5.2 Slot 1



2.5.3 Slot 2



3 Point Sources



A Summary

A.1 Status

V&V Scientist	Beth Sundheim
V&V Date (YYYY-MM-DD)	2007.05.31
V&V Edition	1
V&V Disposition and Status	OK
V&V Charge Time	54.544

A.2 Comments