

# V&V Reference Report

## L2 ASCDS Version : 8.4.5

Observation 709 - L2 Version 3  
Chandra X-Ray Center

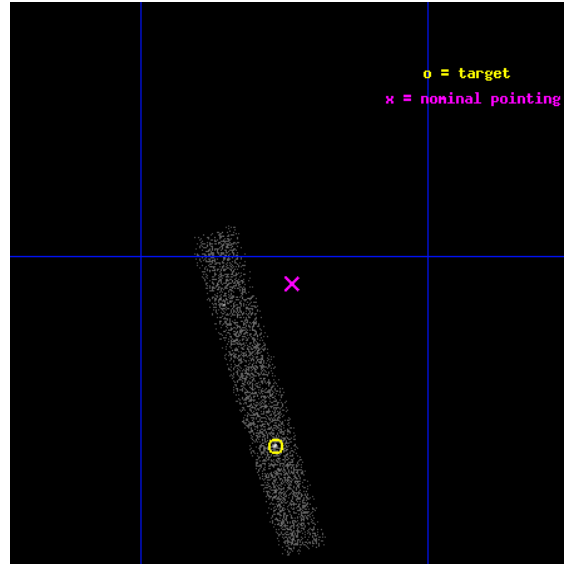
L2 Processing Date : Sep 16 2012

## Contents

<b>1</b>	<b>Front</b>	<b>2</b>
<b>2</b>	<b>OBI</b>	<b>3</b>
2.1	OBI . . . . .	3
2.1.1	Images . . . . .	3
2.1.2	Bias . . . . .	3
2.1.3	Parameters . . . . .	4
2.1.4	Events . . . . .	4
2.2	Compared Parameters . . . . .	5
2.3	Aspect . . . . .	6
2.4	Star Slots . . . . .	9
2.4.1	Slot 3 . . . . .	9
2.4.2	Slot 4 . . . . .	10
2.4.3	Slot 5 . . . . .	11
2.4.4	Slot 6 . . . . .	12
2.4.5	Slot 7 . . . . .	13
2.5	FID Slots . . . . .	14
2.5.1	Slot 0 . . . . .	14
2.5.2	Slot 1 . . . . .	15
2.5.3	Slot 2 . . . . .	16
<b>A</b>	<b>Summary</b>	<b>17</b>
A.1	Status . . . . .	17
A.2	Comments . . . . .	17

# 1 Front

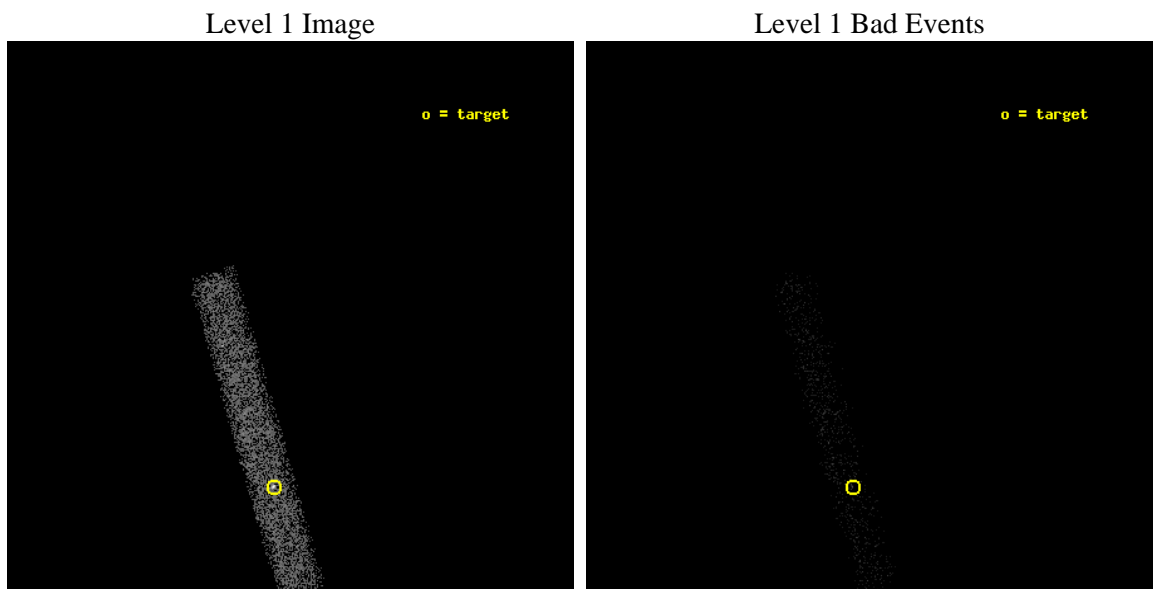
seq_num	400076	Sequence number
obs_id	709	Observation id
title	TEMPORAL EVOLUTION OF TRANSIENT TYPE I BURSTERS IN QUIESCENCE	Prop
observer	PROF. LARS BILDSTEN	Principal investigator
object	AQL X-1	Source name
dtcycle	0	&#160
cycle	P	events from which exps? Prim/Second/Both
ra_targ	287.816667	Observer's specified target RA [deg]
dec_targ	0.585111	Observer's specified target Dec [deg]
ra_nom	287.80945571535	Nominal RA [deg]
dec_nom	0.65461628178231	Nominal Dec [deg]
roll_nom	73.995369659143	Nominal Roll [deg]
revision	3	Processing version of data
ontime	8586.8001279533	Sum of GTIs [s]
livetime	7787.7744675796	Livetime [s]
ontime7	8586.8001279533	Sum of GTIs [s]
l2events	4821	Number of level 2 events



## 2 OBI

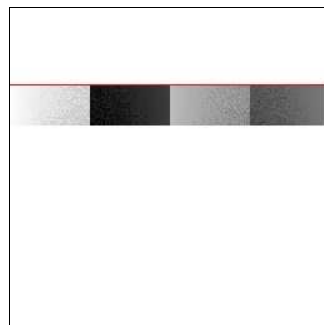
### 2.1 OBI

#### 2.1.1 Images



#### 2.1.2 Bias

Chip 7



### 2.1.3 Parameters

obi_num	0	Obi number	sched_exp_time	8000.000000	[s] Scheduled observation exposure time
ascdsver	8.4.5	Processing system revision	ontime	8586.8001279533	Sum of GTIs [s]
caldsver	4.5.1.1	&#160	ontime7	8586.8001279533	Sum of GTIs [s]
date	2012-09-16T05:06:53	Date and time of file creation	l1events	10070	Number of level 1 events
revision	3	Processing version of data			

### 2.1.4 Events

	<b>ccd 7</b>
level 1 events	10070
rejected events	5063
rejected %	50%

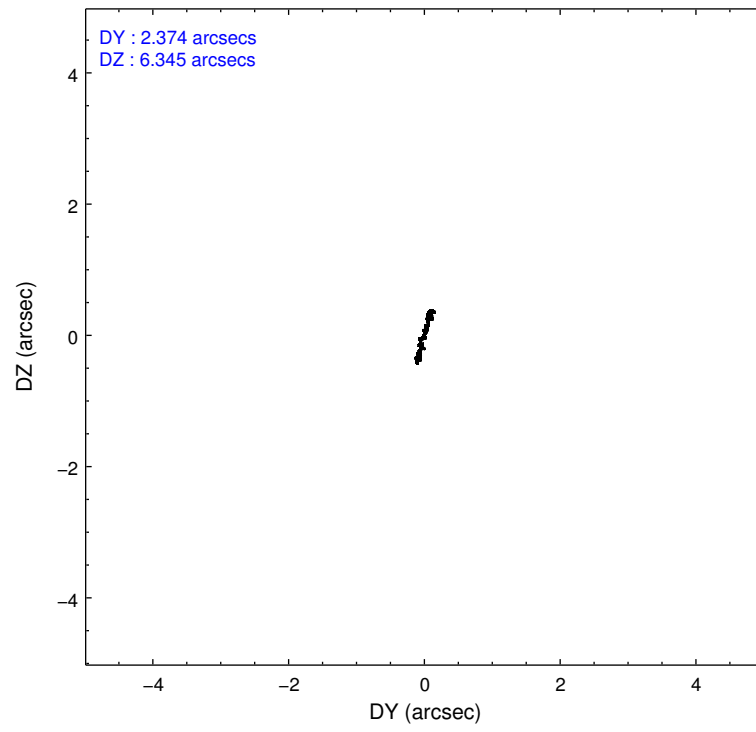
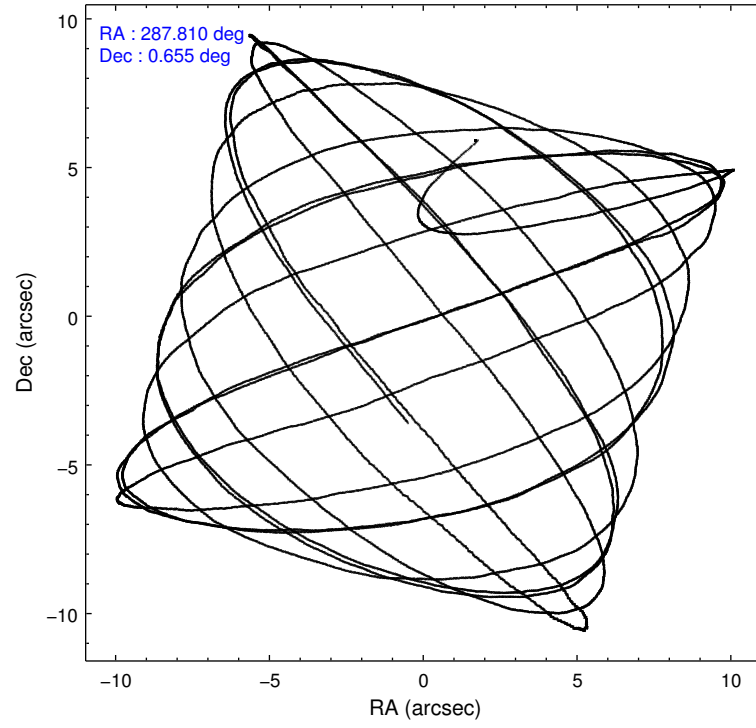
	<b>ccd 7</b>
grade 0 events	781
	7%
grade 1 events	10
	0%
grade 2 events	1010
	10%
grade 3 events	710
	7%
grade 4 events	668
	6%
grade 5 events	839
	8%
grade 6 events	1974
	19%
grade 7 events	4078
	40%

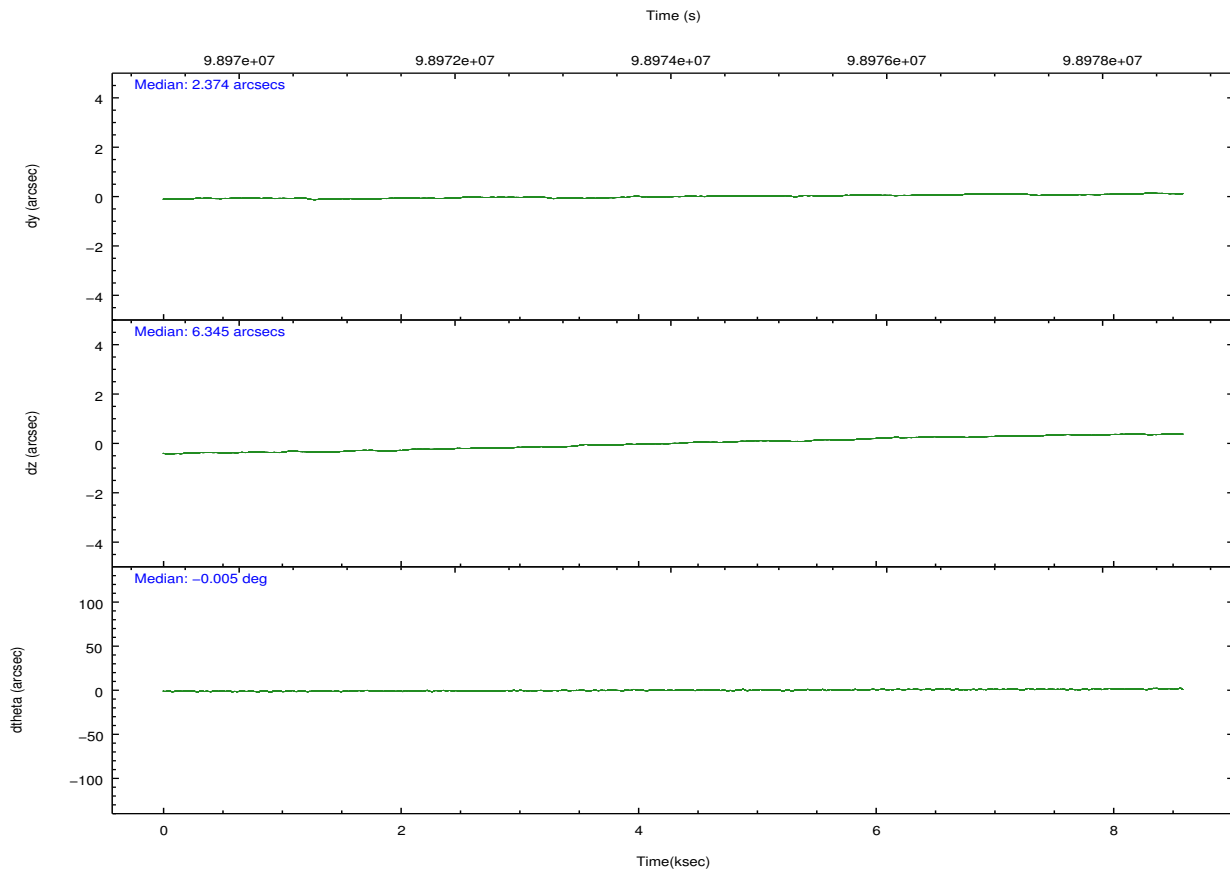
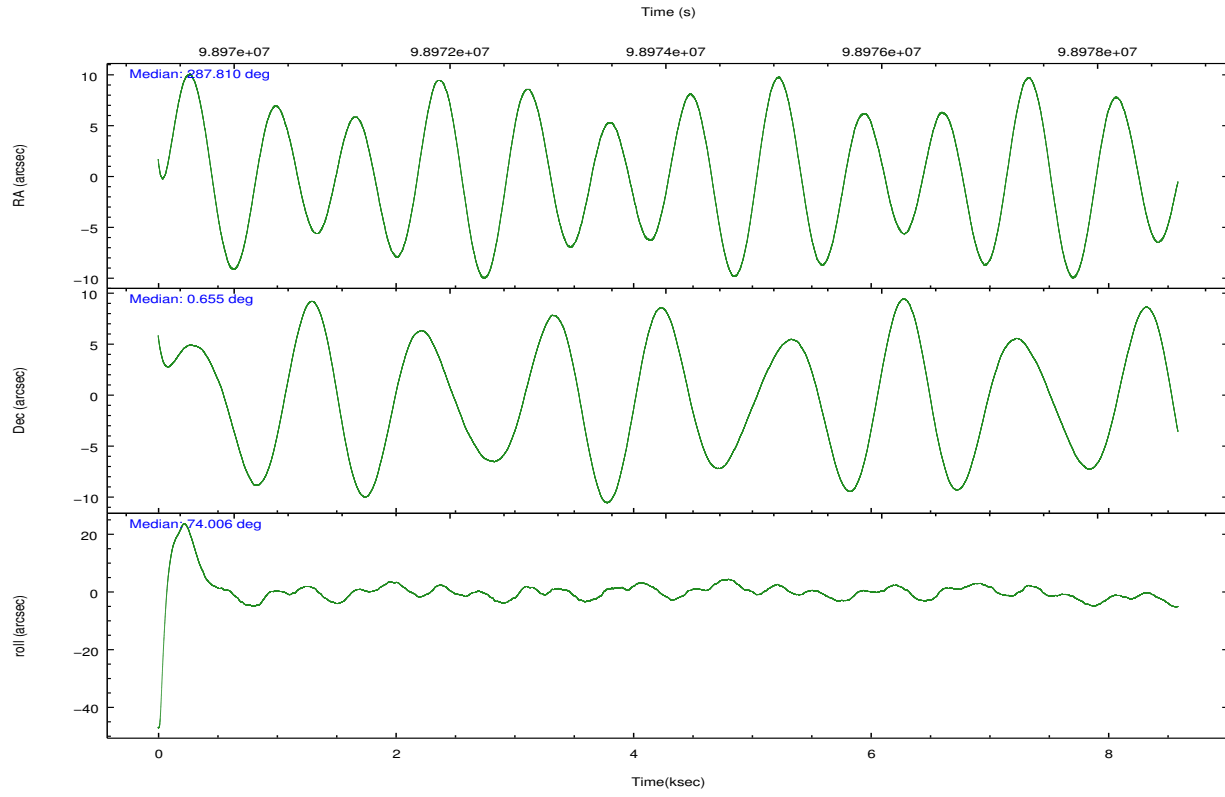


## 2.2 Compared Parameters

Parameter	Planned	Actual	Parameter	Planned	Actual
Instrument	ACIS	ACIS	Obspar format version number	7	7
Detector	ACIS-7	ACIS-7	Obspar file type	PREDICTED	ACTUAL
Grating	NONE	NONE	Obspar update status	NONE	UPDATED
Data mode	VFAINT	VFAINT	Number of optional ACIS chips dropped	0	0
Observation mode	POINTING	POINTING	On-chip summing requested	N	N
[deg] Pointing RA	287.816284	287.8094557153478	Subarray requested	CUSTOM	1/8
[deg] Pointing Dec	0.628086	0.6546162817823075	Subarray start row	650	650
[deg] Pointing Roll	73.838769	73.99536965914302	Subarray row count	128	128
[mm] SIM focus pos	-0.684267	-0.6828225247311905	Alternating exposures requested	N	N
[mm] SIM defocus	0	0.001444936568705701	[s] Primary exposure time	0.000000	0.4
[mm] SIM translation stage pos	-190.132523	-190.1400660498719			
[mm] SIM translation stage offset	0	0.00754346686406393			
[s] Observation start time (MET)	98970312.184000	98969152.62816299			
Observation start date	2001-02-19T11:44:08	2001-02-19T11:25:52			
[s] Observation end time (MET)	98978312.184000	98979898.728578			
Observation end date	2001-02-19T13:57:28	2001-02-19T14:24:58			
Read mode	TIMED	TIMED			

## 2.3 Aspect



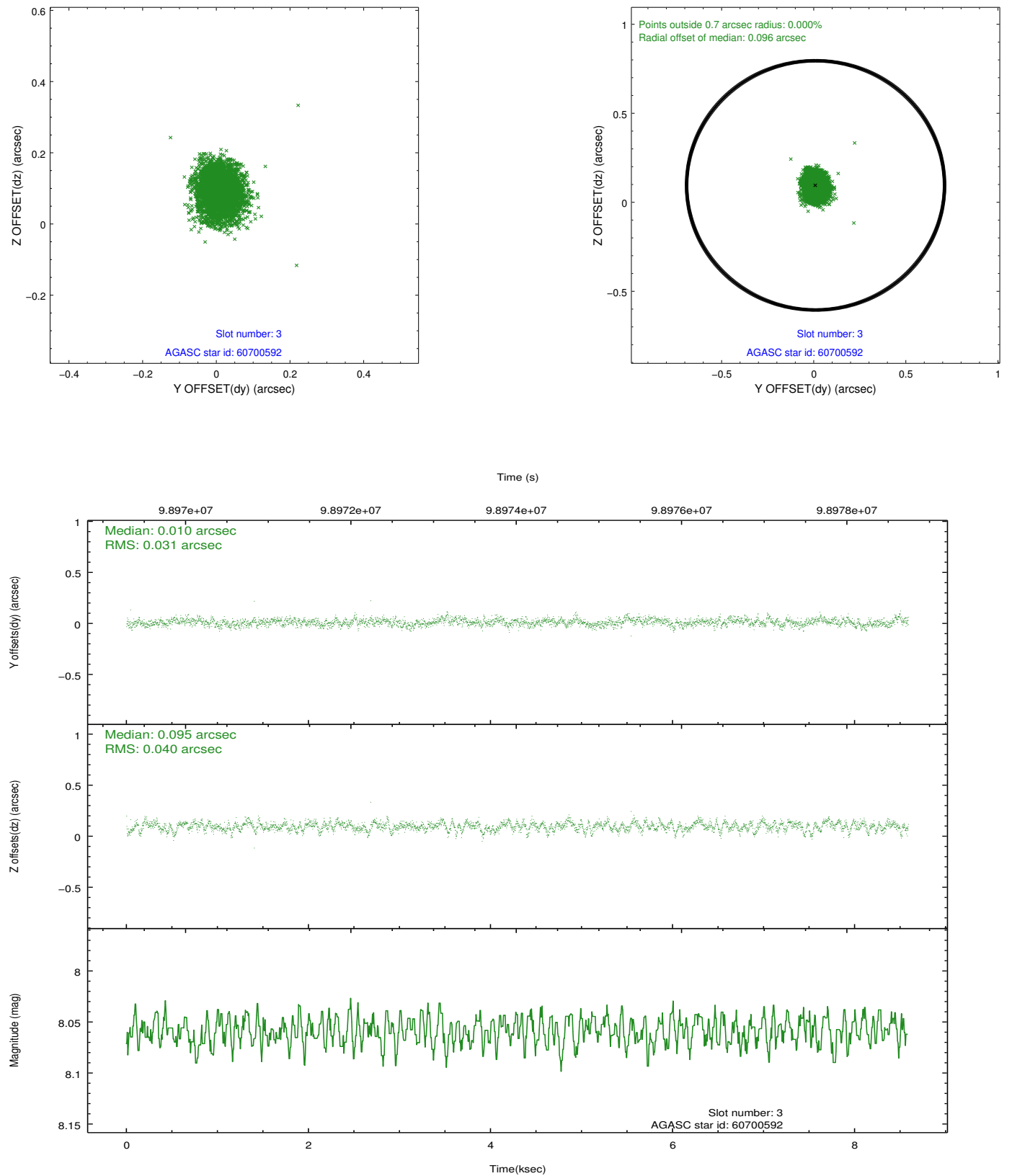


### Slot Statistics

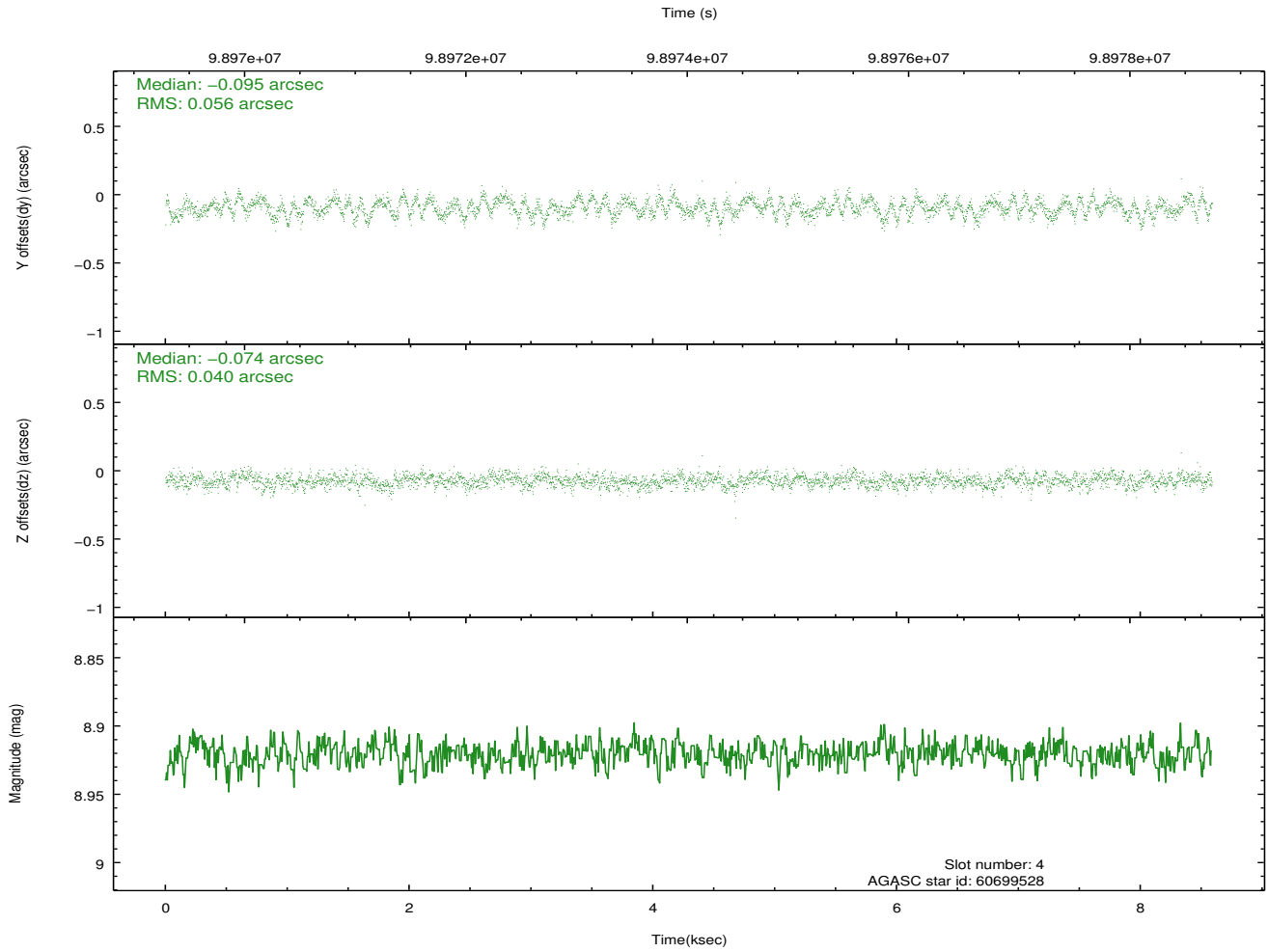
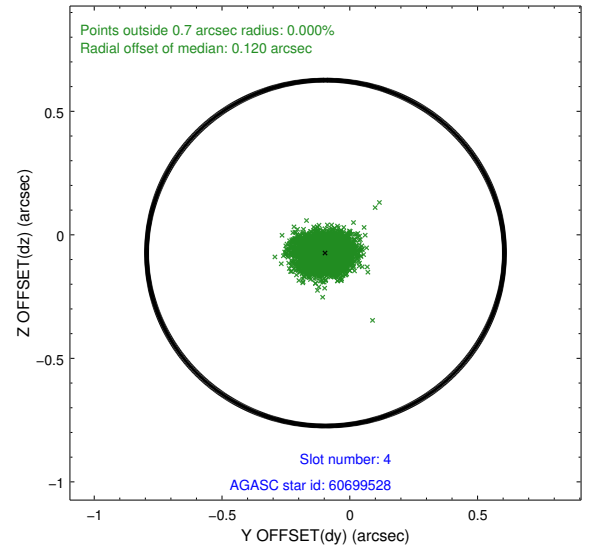
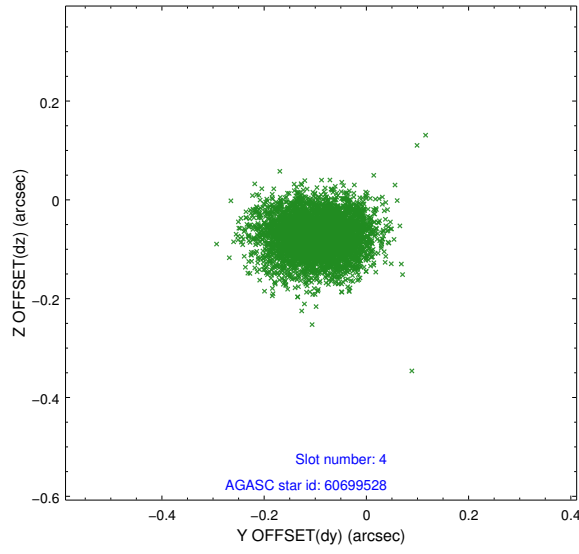
slot	status	id	mag	n_pts	med_dy	med_dz	dr1	dr2	ra	dec	mean_y	mean_z
0	FID	ACIS-S-2	7.11	2095	-0.027	0.003	0.009	0.014	0.000000	0.000000	-755.00	-1727.49
1	FID	ACIS-S-4	7.20	2095	-0.040	0.012	0.007	0.013	0.000000	0.000000	2157.95	180.38
2	FID	ACIS-S-5	7.23	2094	0.036	-0.006	0.008	0.013	0.000000	0.000000	-1806.98	174.70
3	GUIDE	60700592	8.06	4190	0.010	0.095	0.052	0.088	287.530354	0.932002	764.47	1293.68
4	GUIDE	60699528	8.92	4190	-0.095	-0.074	0.073	0.118	287.344521	1.231468	1614.18	2236.13
5	GUIDE	60698176	8.87	4189	-0.018	-0.046	0.081	0.130	287.425571	1.234708	1706.61	1959.40
6	GUIDE	60708936	9.10	4189	-0.055	0.082	0.112	0.183	287.407925	0.924863	617.60	1710.28
7	GUIDE	60710592	9.41	4187	0.155	-0.058	0.124	0.202	287.035703	0.265770	-2034.35	2337.42

## 2.4 Star Slots

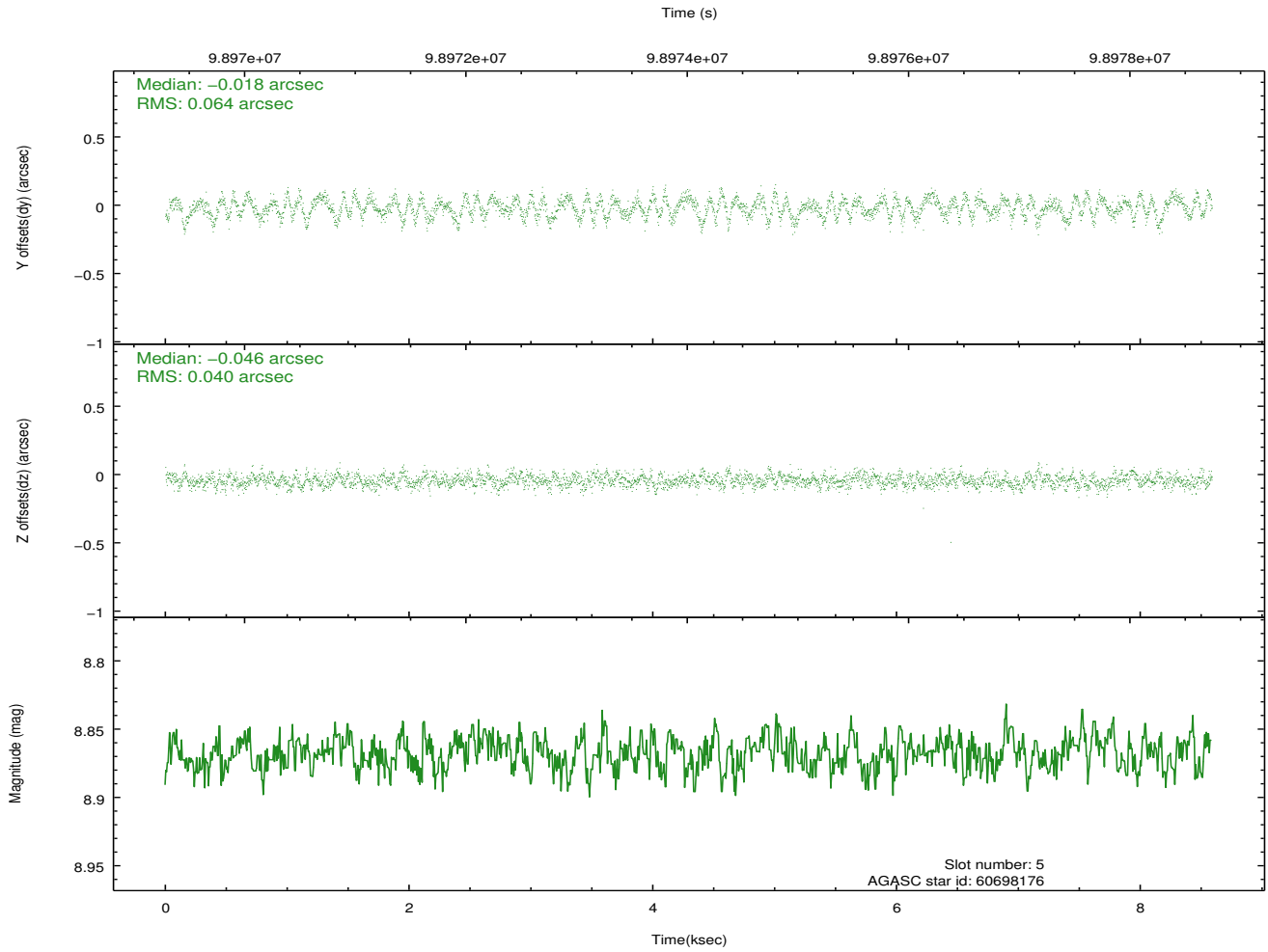
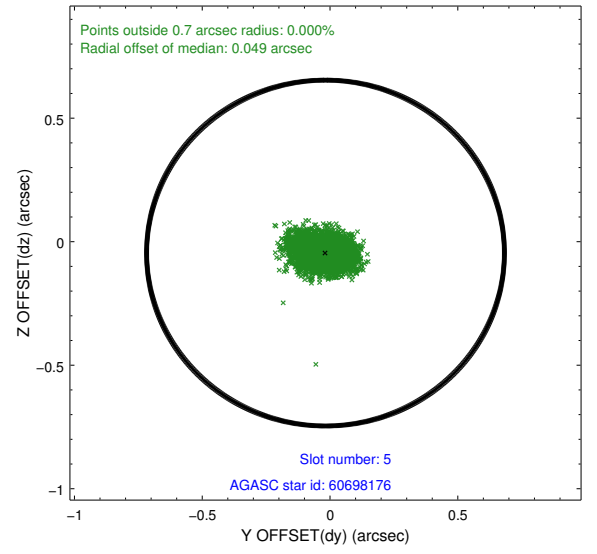
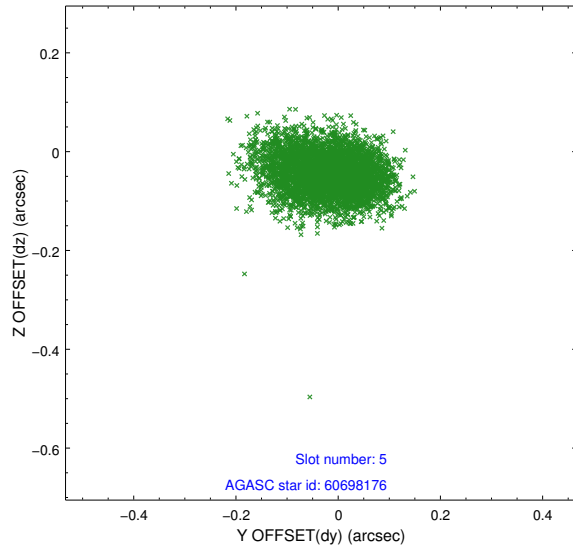
### 2.4.1 Slot 3



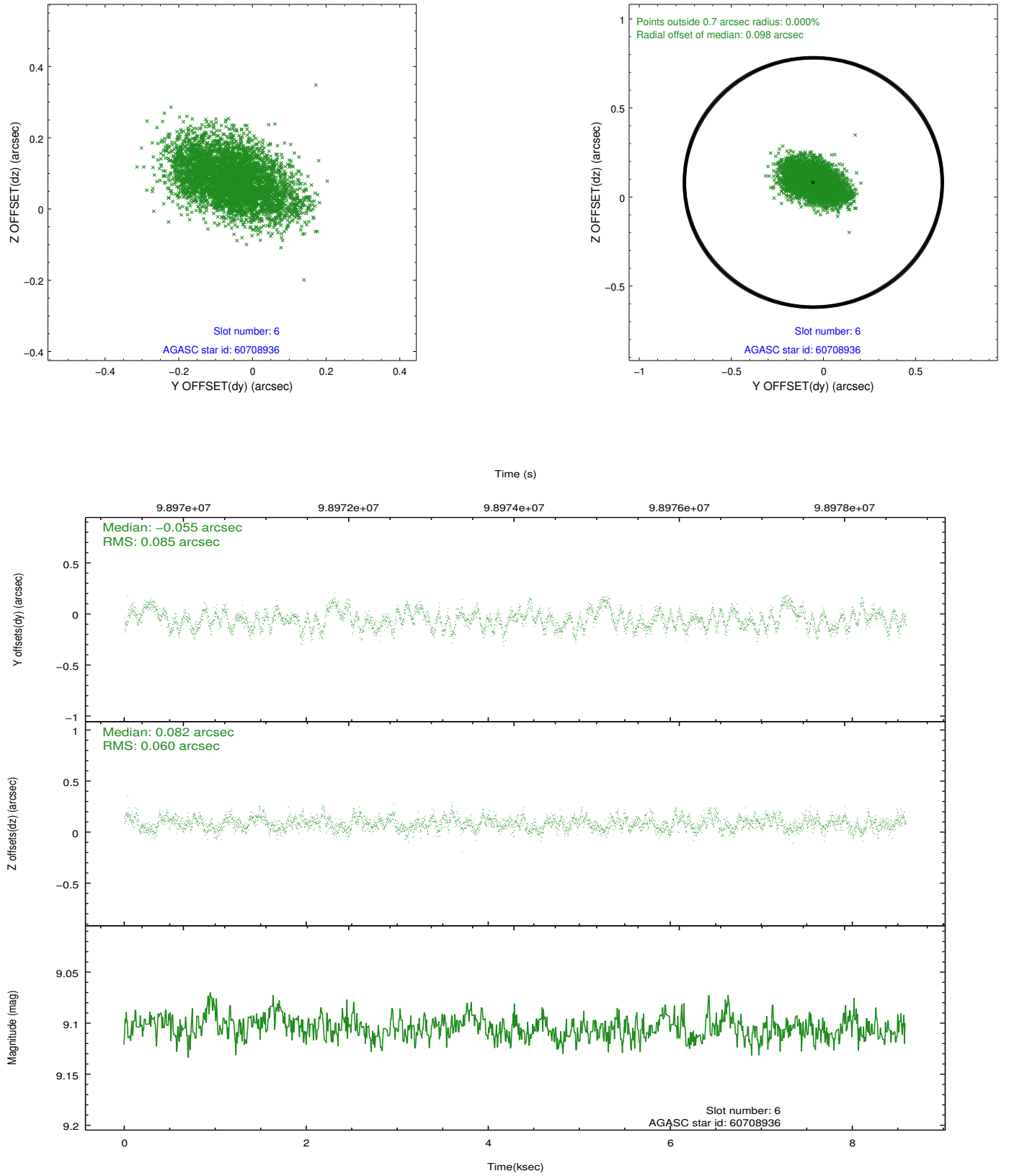
## 2.4.2 Slot 4



### 2.4.3 Slot 5

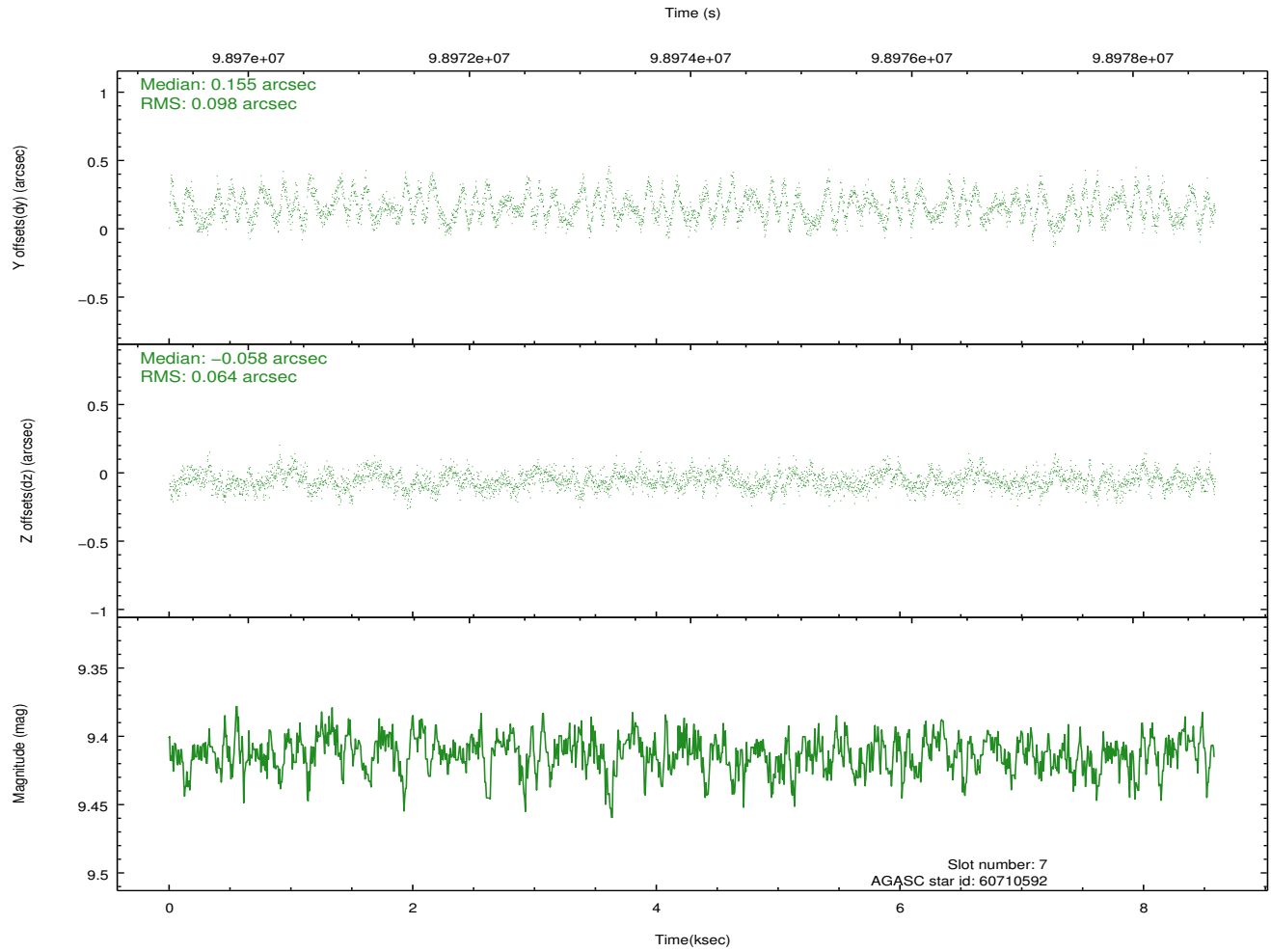
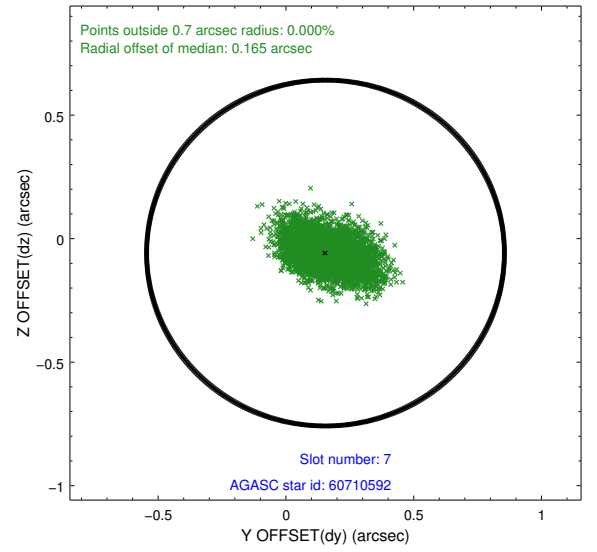
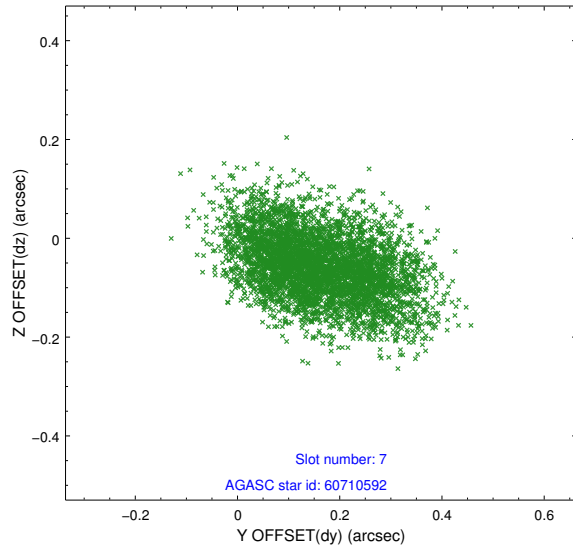


## 2.4.4 Slot 6



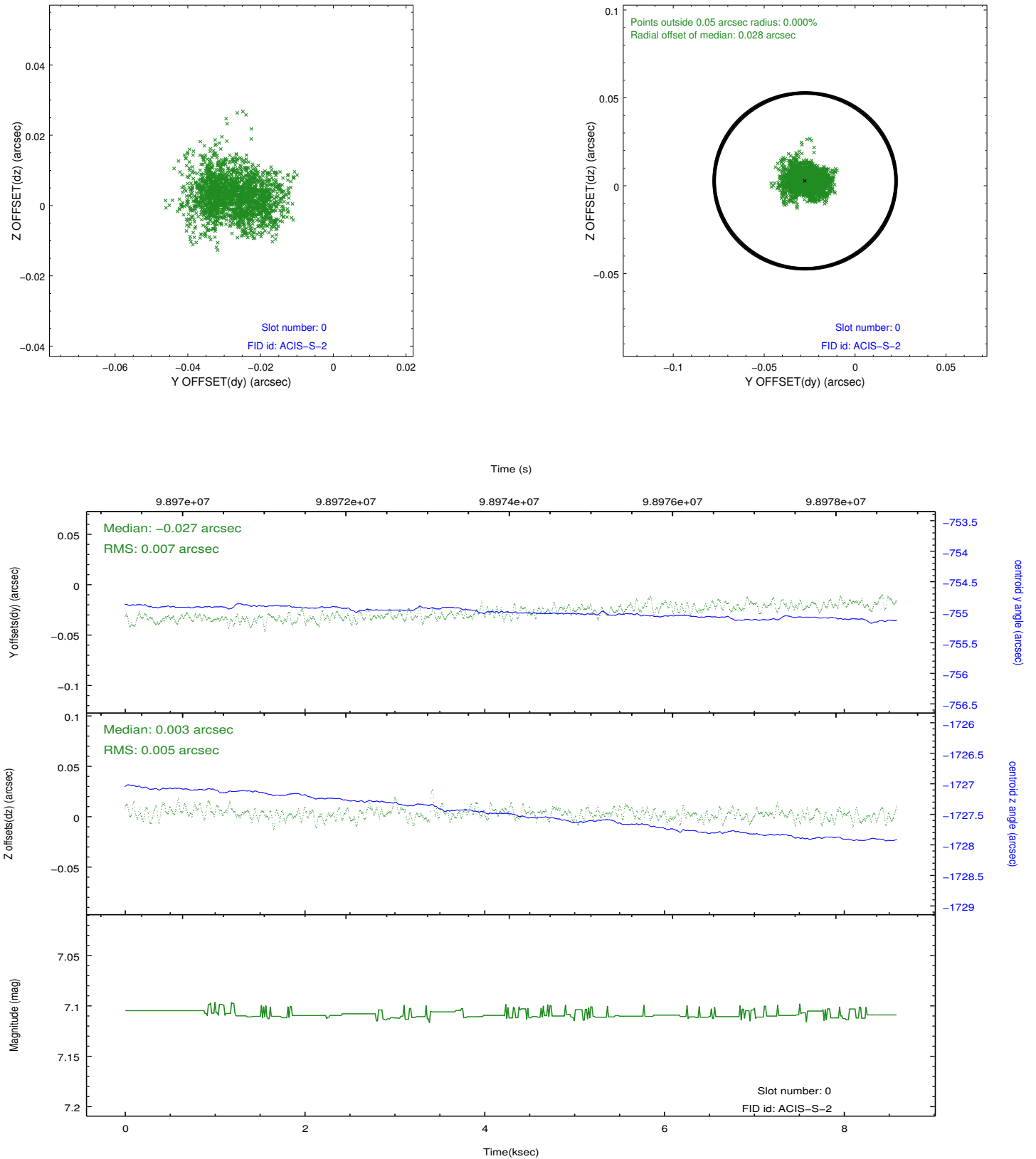


## 2.4.5 Slot 7

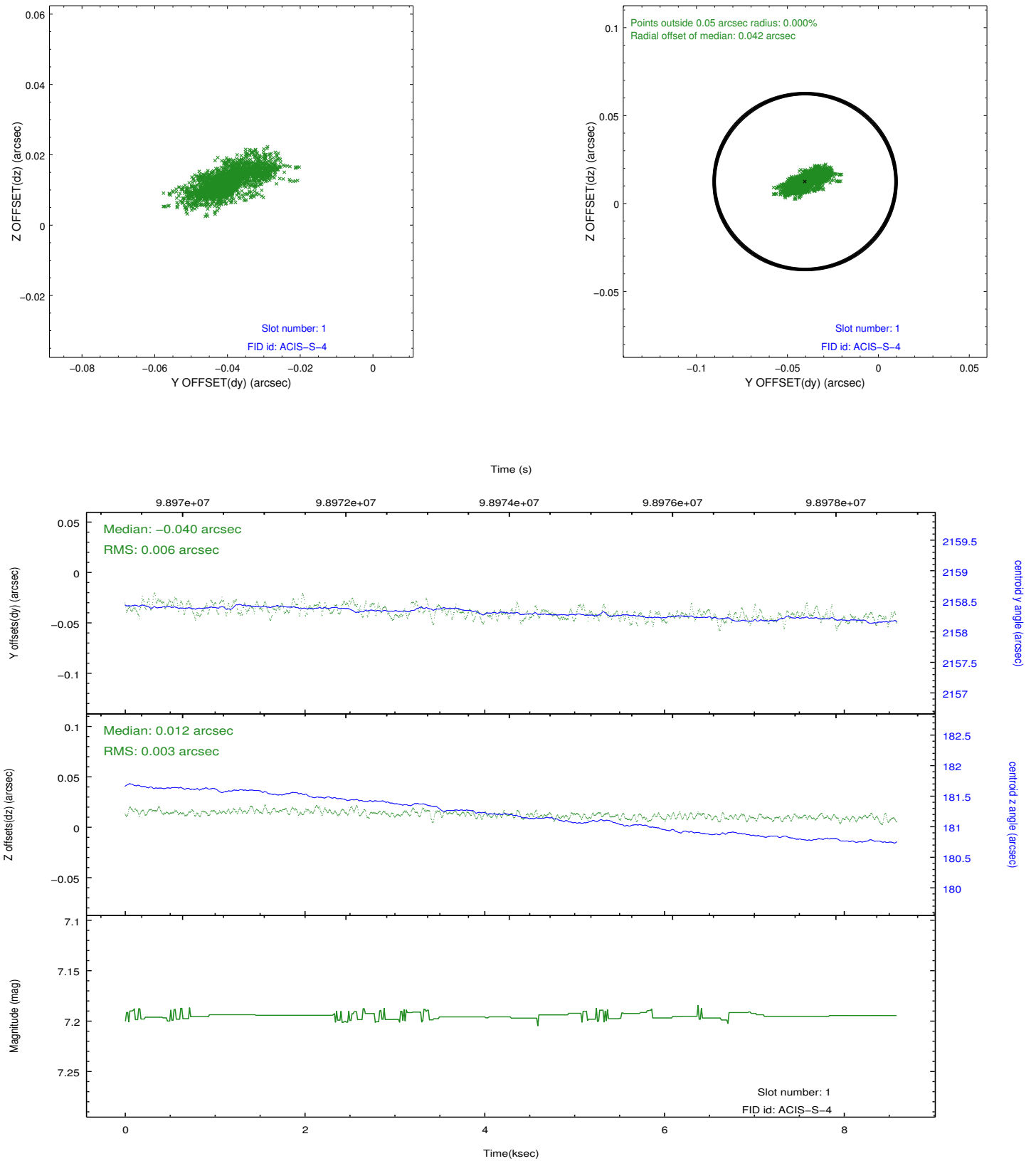


## 2.5 FID Slots

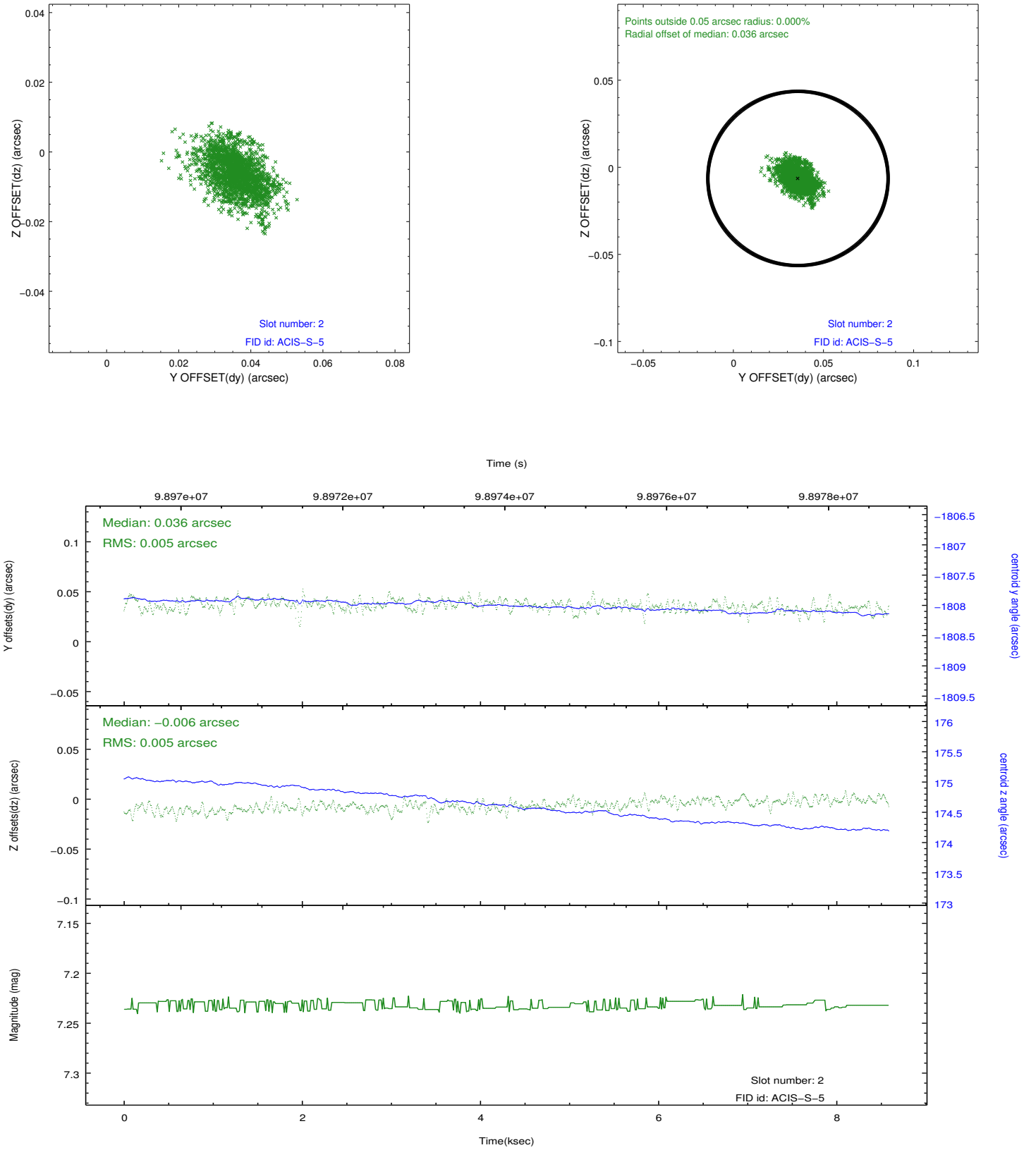
### 2.5.1 Slot 0



## 2.5.2 Slot 1



### 2.5.3 Slot 2



## A Summary

### A.1 Status

V&V Scientist	Jen Lauer
V&V Date (YYYY-MM-DD)	2012.09.19
V&V Edition	1
V&V Disposition and Status	OK
V&V Charge Time	8.586

### A.2 Comments

Monitor constraint not met, follows obs708 by 83 days instead of 25 - 35 days as requested.