

V&V Reference Report

L2 ASCDS Version : 7.6.10

Observation 677 - L2 Version 001
Chandra X-Ray Center

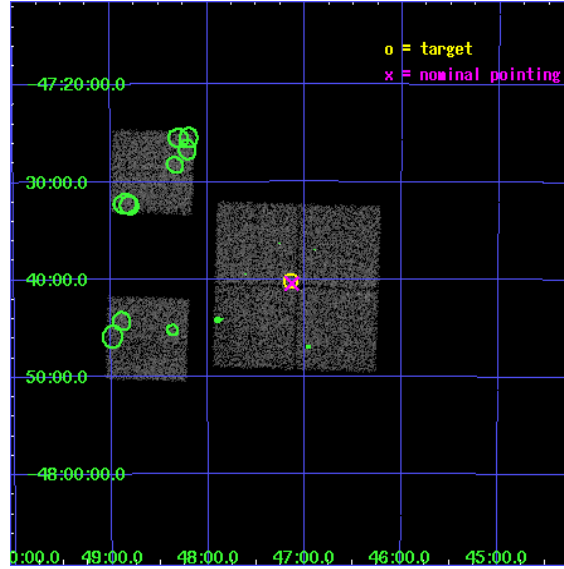
L2 Processing Date : May 31 2007

Contents

1	Front	2
2	OBI	3
2.1	OBI	3
2.1.1	Images	3
2.1.2	Bias	3
2.1.3	Parameters	4
2.1.4	Events	4
2.2	Compared Parameters	5
2.3	Aspect	6
2.4	Star Slots	9
2.4.1	Slot 3	9
2.4.2	Slot 4	10
2.4.3	Slot 5	11
2.4.4	Slot 6	12
2.4.5	Slot 7	13
2.5	FID Slots	14
2.5.1	Slot 0	14
2.5.2	Slot 1	15
2.5.3	Slot 2	16
3	Point Sources	17
A	Summary	18
A.1	Status	18
A.2	Comments	18

1 Front

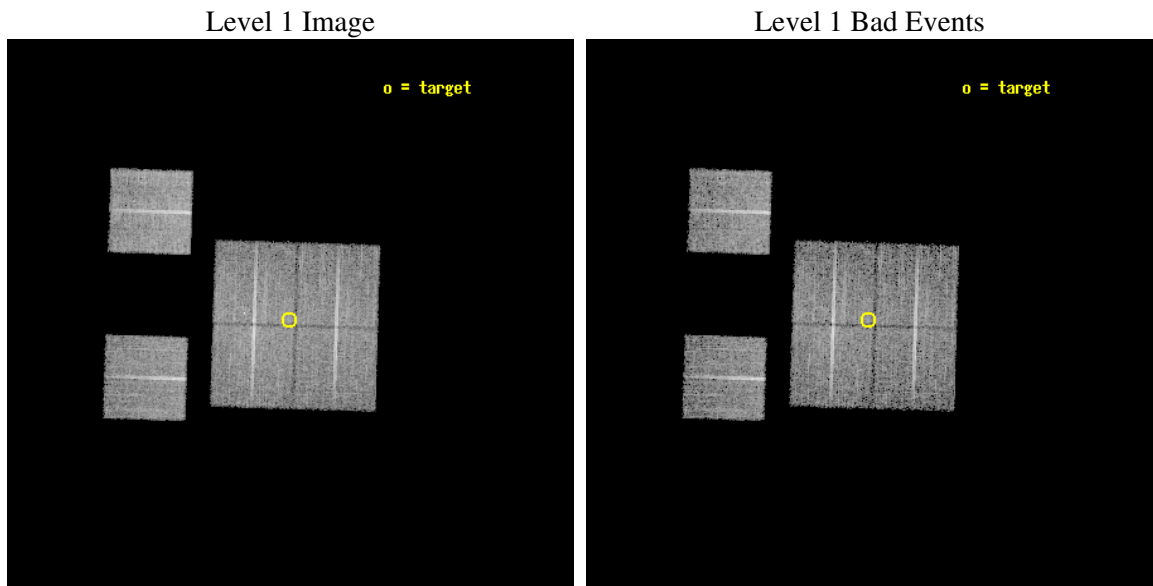
seq_num	400044
obs_id	677
title	BLACK HOLE EVENT HORIZONS AND ADVECTION-DOMINATED ACCRETION
observer	Dr. Jeffrey McClintock
object	4U 1543-47
dtcycle	0
cycle	P
ra_targ	236.785833
dec_targ	-47.669444
ra_nom	236.78318143869
dec_nom	-47.674001313306
roll_nom	271.82317137425
revision	3
ontime	9968.0000092834
livetime	9841.7791911569
ontime0	9968.0000092834
ontime1	9968.0000092834
ontime2	9961.5180090368
ontime3	9968.0000092834
ontime6	9968.0000092834
ontime8	9968.0000092834
l2events	36839



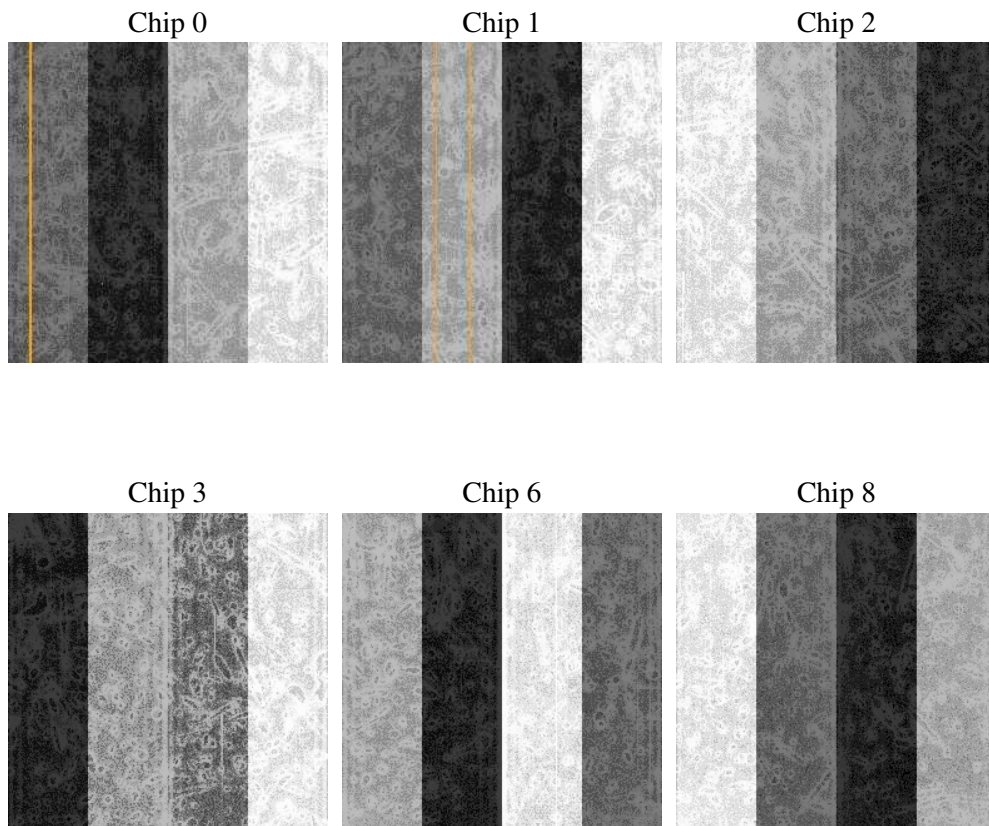
2 OBI

2.1 OBI

2.1.1 Images



2.1.2 Bias



2.1.3 Parameters

obi_num	0
ascdsver	7.6.10
caldbver	3.4.0
date	2007-05-31T22:41:20
revision	3

sched_exp_time	10000.000000
ontime	9968.0000092834
ontime0	9968.0000092834
ontime1	9968.0000092834
ontime2	9961.5180090368
ontime3	9968.0000092834
ontime6	9968.0000092834
ontime8	9968.0000092834
l1events	346164

2.1.4 Events

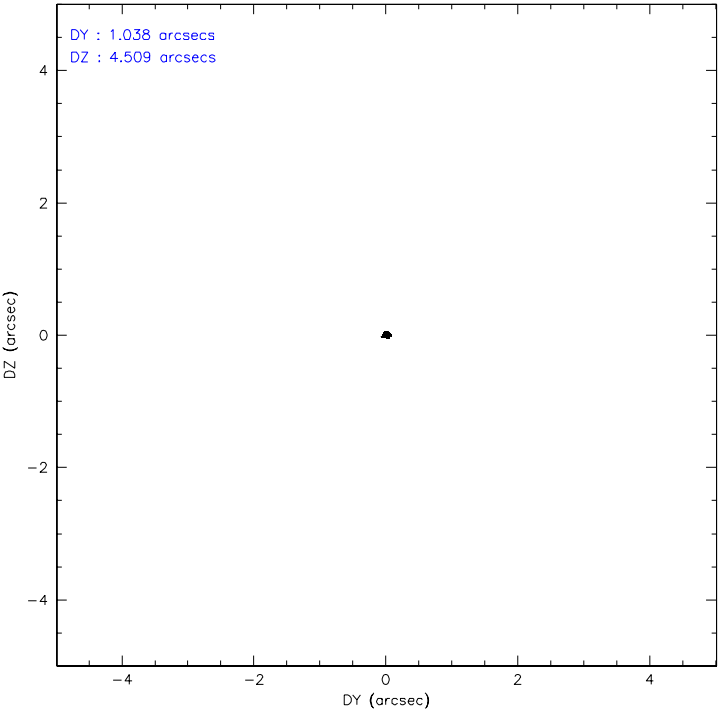
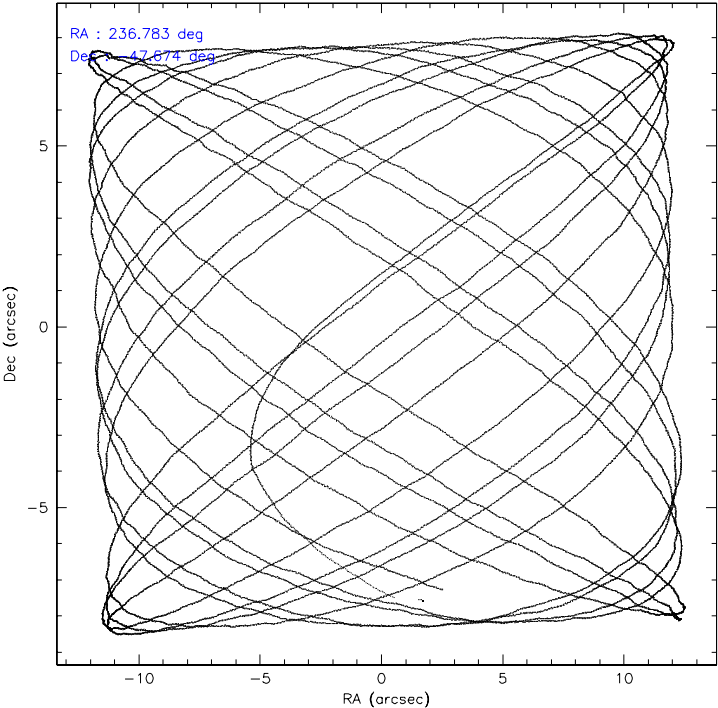
	ccd 0	ccd 1	ccd 2	ccd 3	ccd 6	ccd 8
level 1 events	50213	52442	56413	55854	56686	74556
rejected events	43278	45148	49768	48790	49895	59711
rejected %	86%	86%	88%	87%	88%	80%

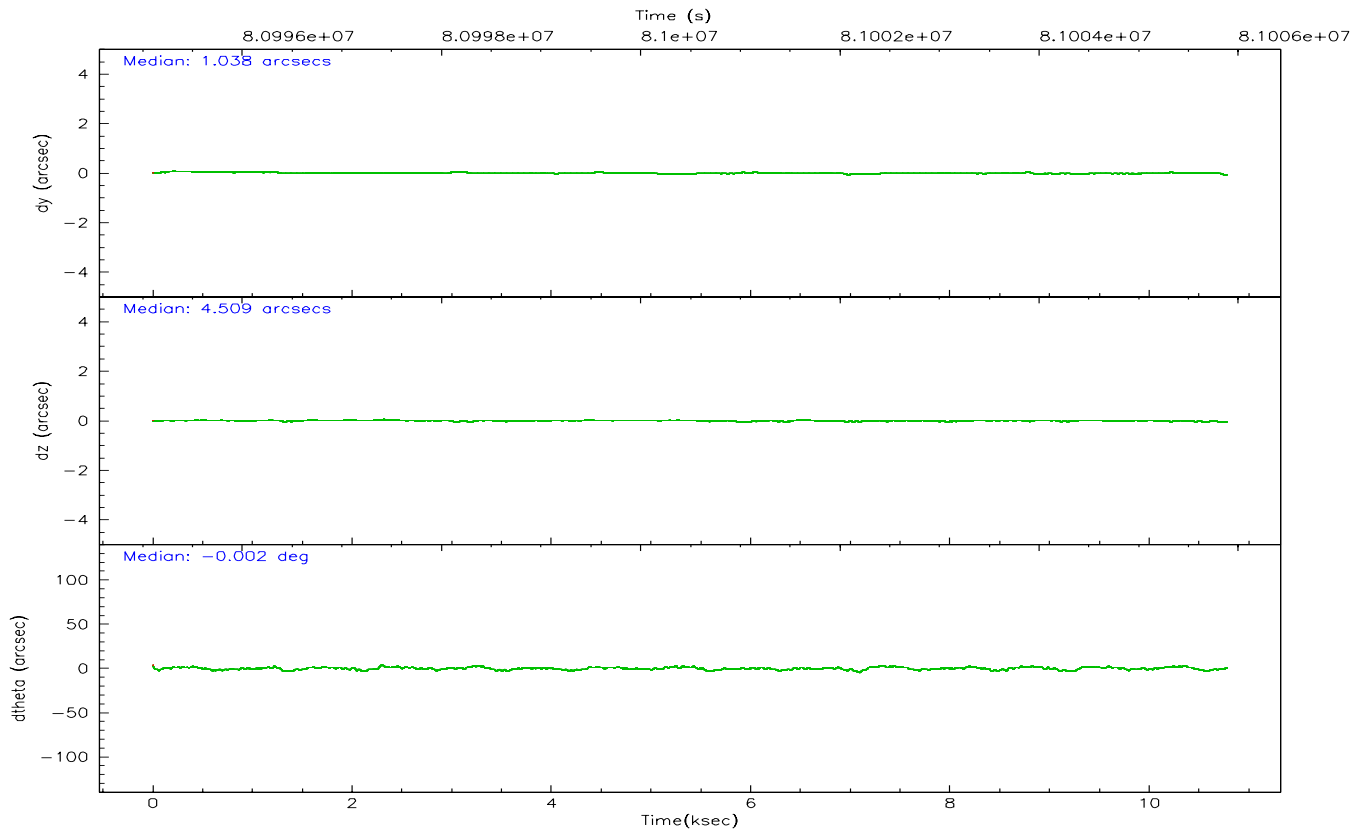
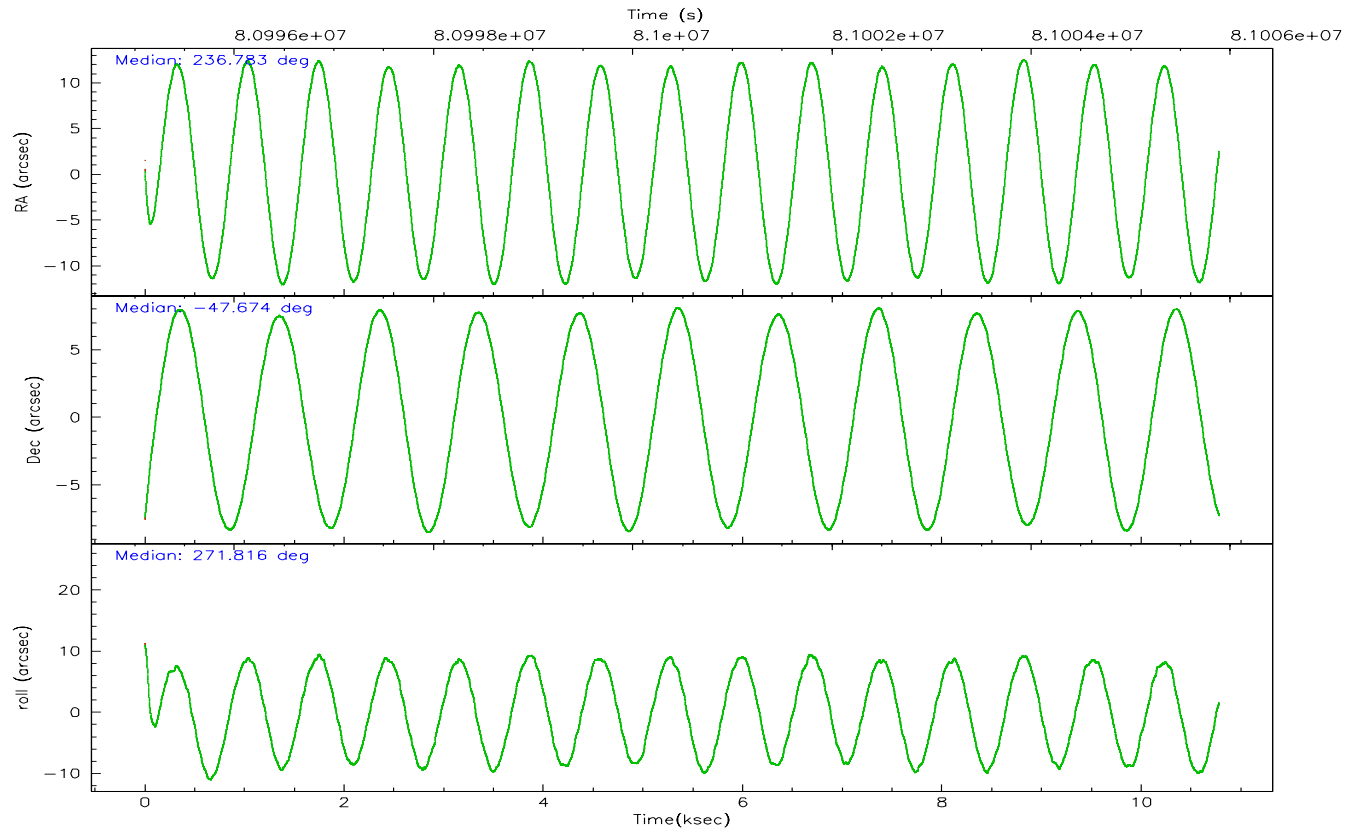
	ccd 0	ccd 1	ccd 2	ccd 3	ccd 6	ccd 8
grade 0 events	3197	3232	2959	3353	2888	4897
	6%	6%	5%	6%	5%	6%
grade 1 events	20	23	27	28	24	40
	0%	0%	0%	0%	0%	0%
grade 2 events	1338	1447	1397	1357	1348	3048
	2%	2%	2%	2%	2%	4%
grade 3 events	708	705	615	616	662	1586
	1%	1%	1%	1%	1%	2%
grade 4 events	603	676	602	647	697	1521
	1%	1%	1%	1%	1%	2%
grade 5 events	1902	2161	1870	2096	2237	2989
	3%	4%	3%	3%	3%	4%
grade 6 events	1089	1241	1075	1094	1198	3802
	2%	2%	1%	1%	2%	5%
grade 7 events	41356	42957	47868	46663	47632	56673
	82%	81%	84%	83%	84%	76%

2.2 Compared Parameters

Parameter	Planned	Actual	Parameter	Planned	Actual
Instrument	ACIS	ACIS	Obspar format version number	6	6
Detector	ACIS-012368	ACIS-012368	Obspar file type	PREDICTED	ACTUAL
Grating	NONE	NONE	Obspar update status	NONE	UPDATED
Data mode	VFAINT	VFAINT	Number of optional ACIS chips dropped	0	0
Observation mode	POINTING	POINTING	On-chip summing requested	N	N
Pointing RA	236.761774	236.783181438689	Subarray requested	NONE	NONE
Pointing Dec	-47.650551	-47.67400131330636	Alternating exposures requested	N	N
Pointing Roll	271.598648	271.8231713742473	Primary exposure time	3.200000	3.2
SIM focus pos (mm)	-0.782348	-0.7809083437167272			
SIM defocus (mm)	0	0.001439871863259334			
SIM translation stage pos (mm)	-233.592463	-233.5874344608287			
SIM translation stage offset (mm)	0	-0.005018542100998502			
Observation start time	80995888.184000	80994633.04603501			
Observation start date	2000-07-26T10:50:24	2000-07-26T10:30:33			
Observation end time	81005888.184000	81006721.383985			
Observation end date	2000-07-26T13:37:04	2000-07-26T13:52:01			
Read mode	TIMED	TIMED			

2.3 Aspect



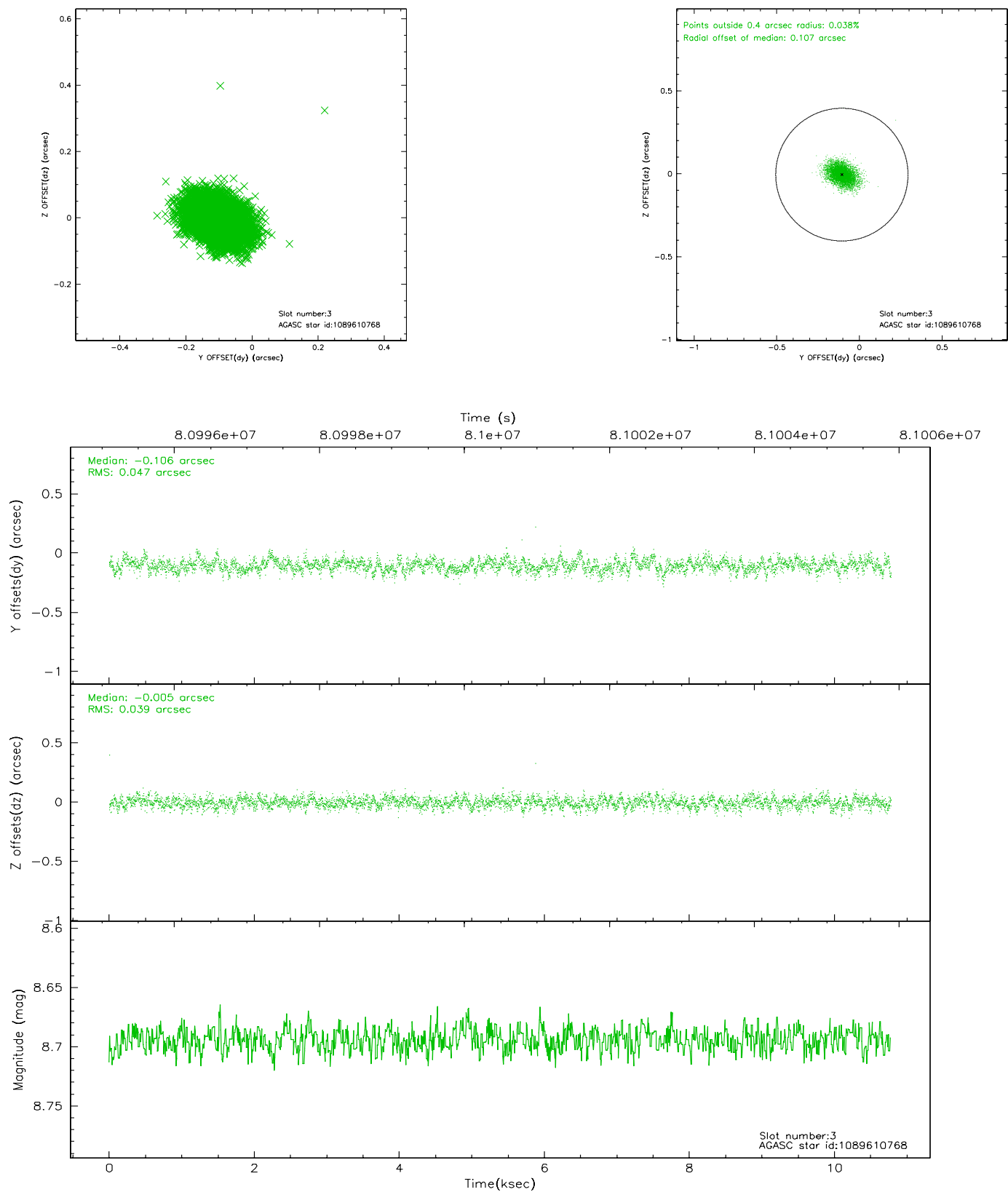


Slot Statistics

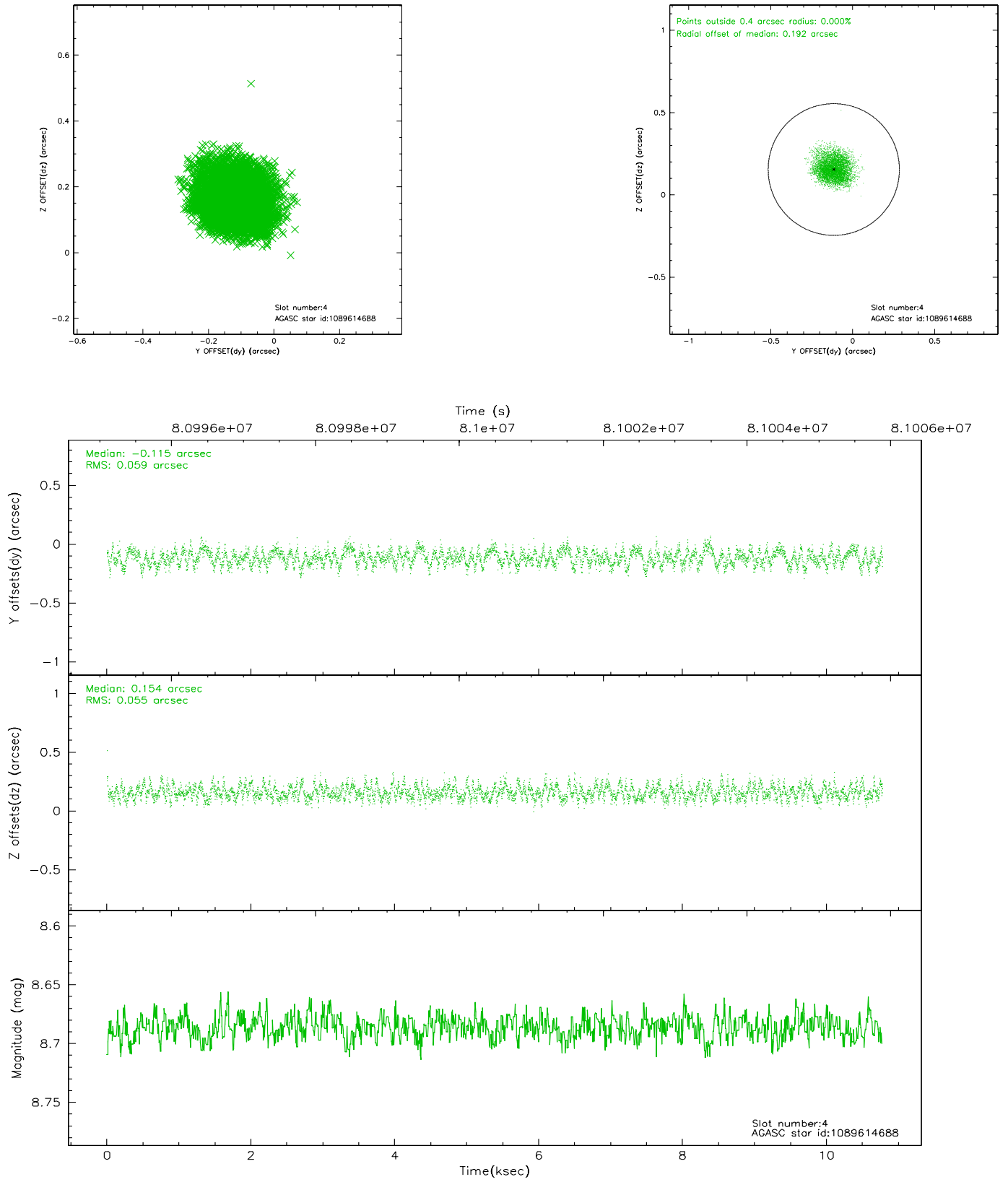
slot	status	id	mag	n_pts	med_dy	med_dz	dr1	dr2	ra	dec	mean_y	mean_z
0	FID	ACIS-I-2	7.15	2628	-0.016	0.002	0.015	0.025	0.000000	0.000000	-755.38	-834.20
1	FID	ACIS-I-4	7.19	2627	-0.077	0.019	0.010	0.017	0.000000	0.000000	2158.40	1071.75
2	FID	ACIS-I-5	7.23	2628	-0.008	0.049	0.014	0.023	0.000000	0.000000	-1808.58	1070.18
3	GUIDE	1089610768	8.69	5256	-0.106	-0.005	0.065	0.108	236.932509	-47.418379	-823.00	439.58
4	GUIDE	1089614688	8.69	5256	-0.115	0.154	0.088	0.134	237.281593	-47.031024	-2189.44	1337.79
5	GUIDE	1089602168	9.14	5256	0.098	-0.064	0.079	0.126	236.272755	-48.160772	1807.48	-1224.16
6	GUIDE	1089614056	8.51	5257	-0.022	0.011	0.080	0.131	237.721700	-47.460303	-604.42	2354.52
7	GUIDE	1087923304	9.75	5258	0.157	-0.099	0.119	0.192	236.006027	-48.288425	2254.73	-1872.69

2.4 Star Slots

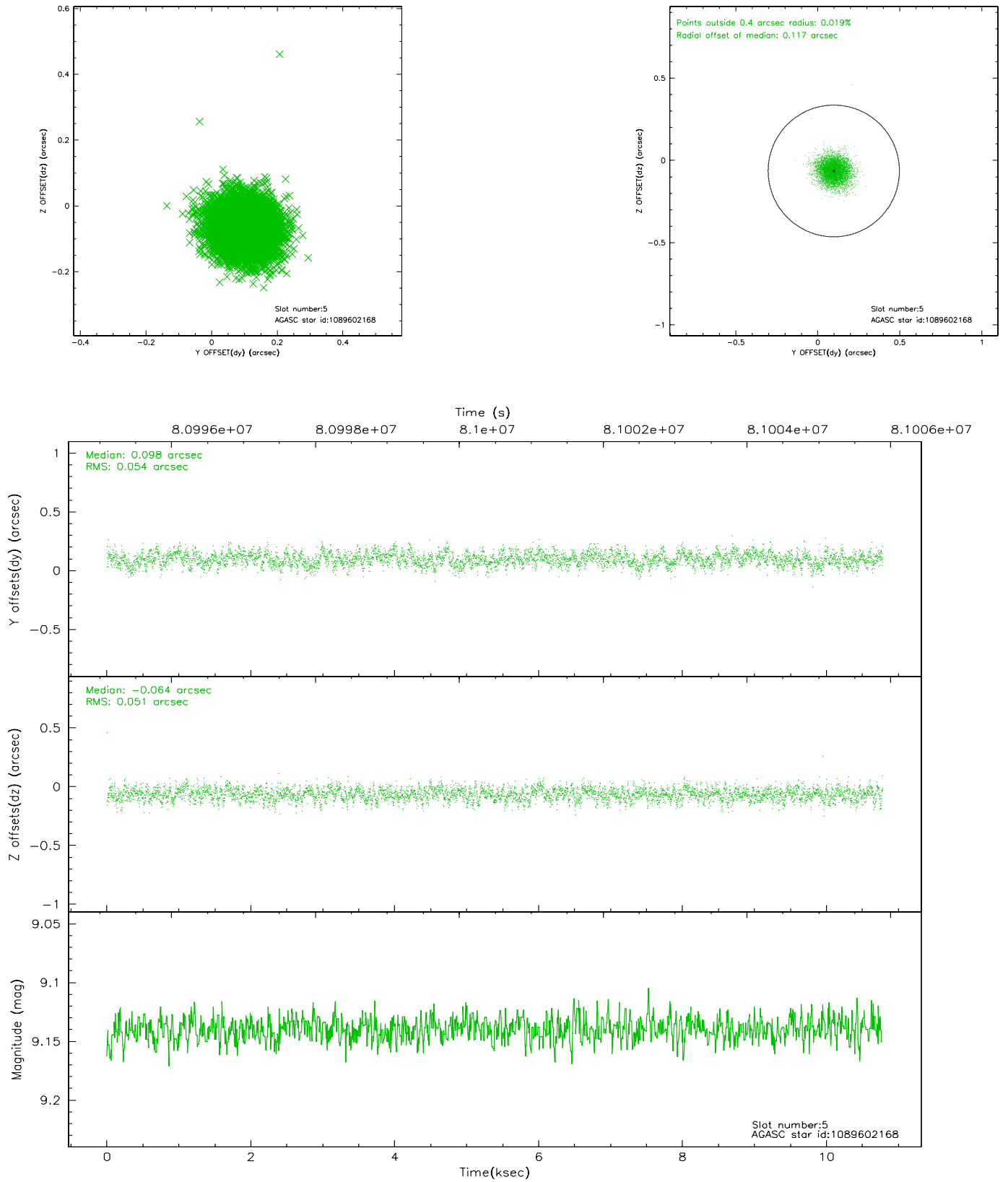
2.4.1 Slot 3



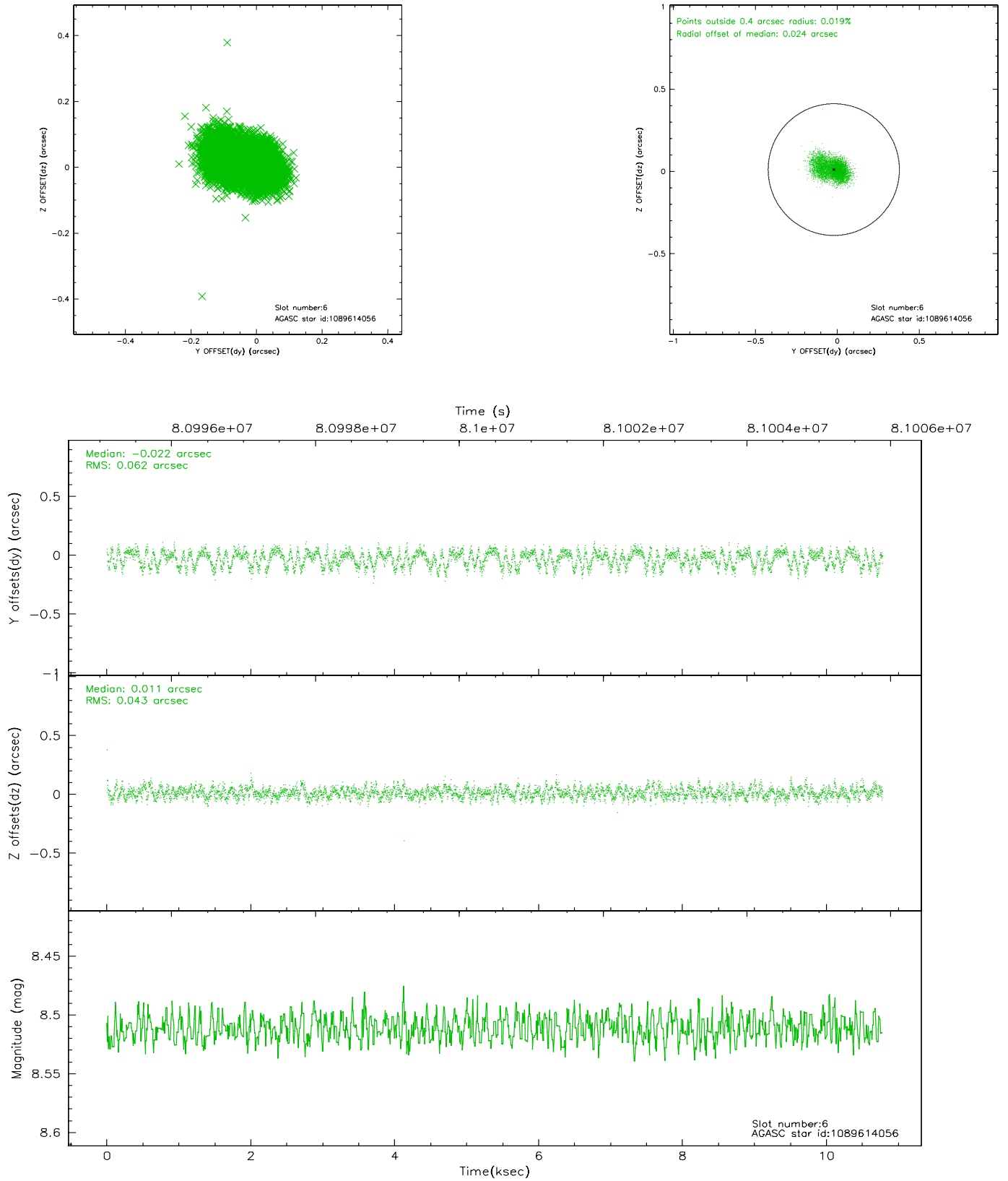
2.4.2 Slot 4



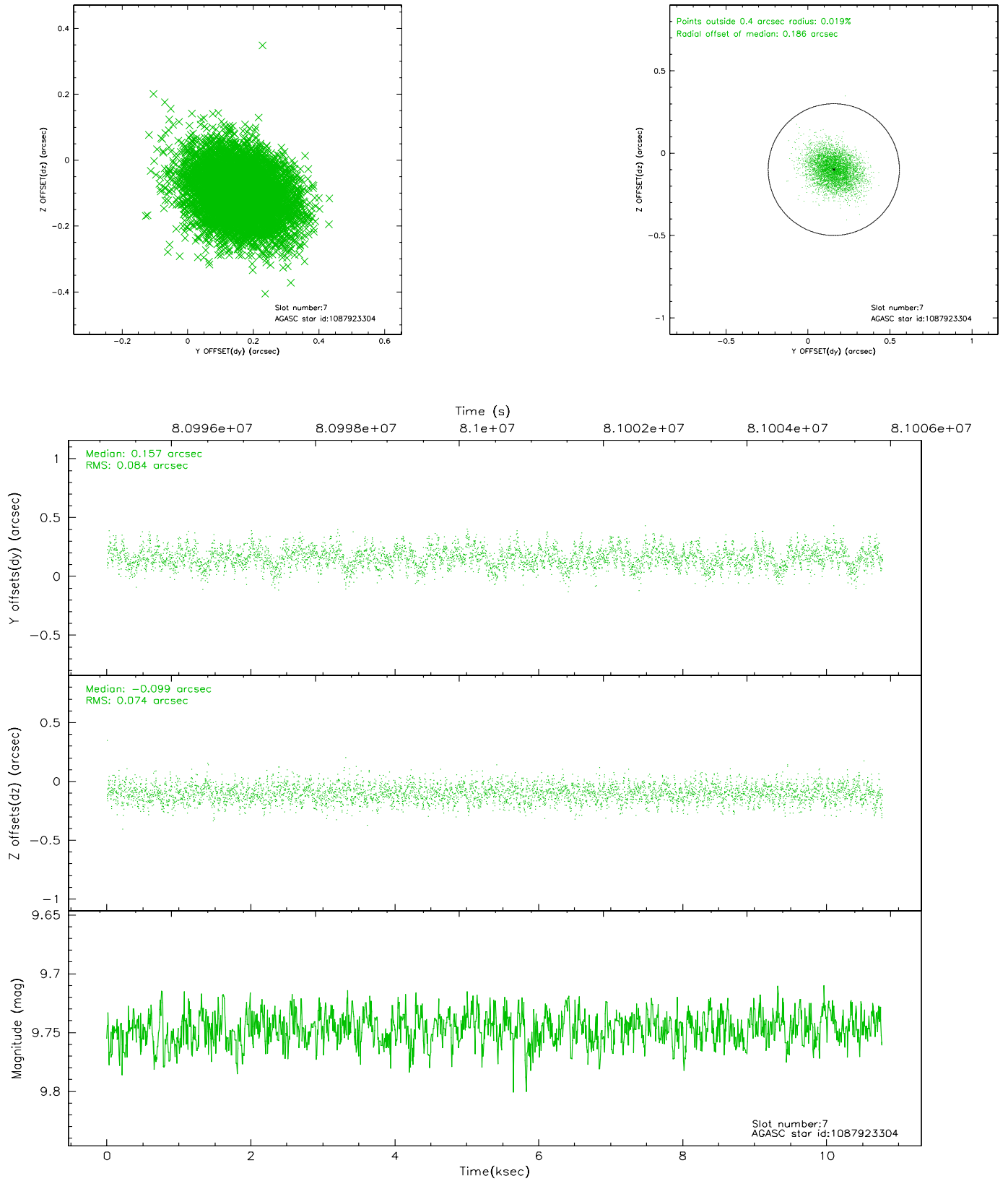
2.4.3 Slot 5



2.4.4 Slot 6

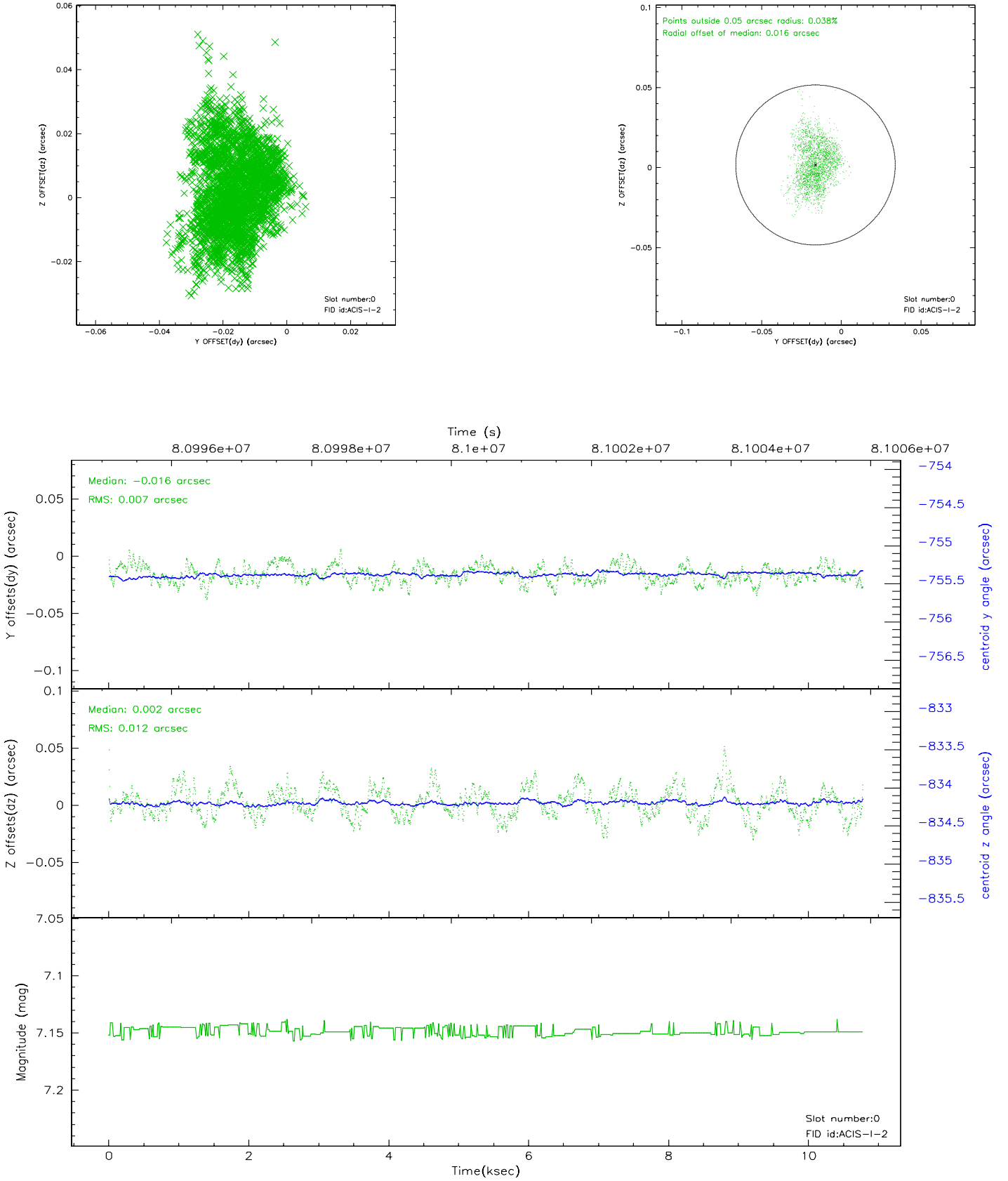


2.4.5 Slot 7

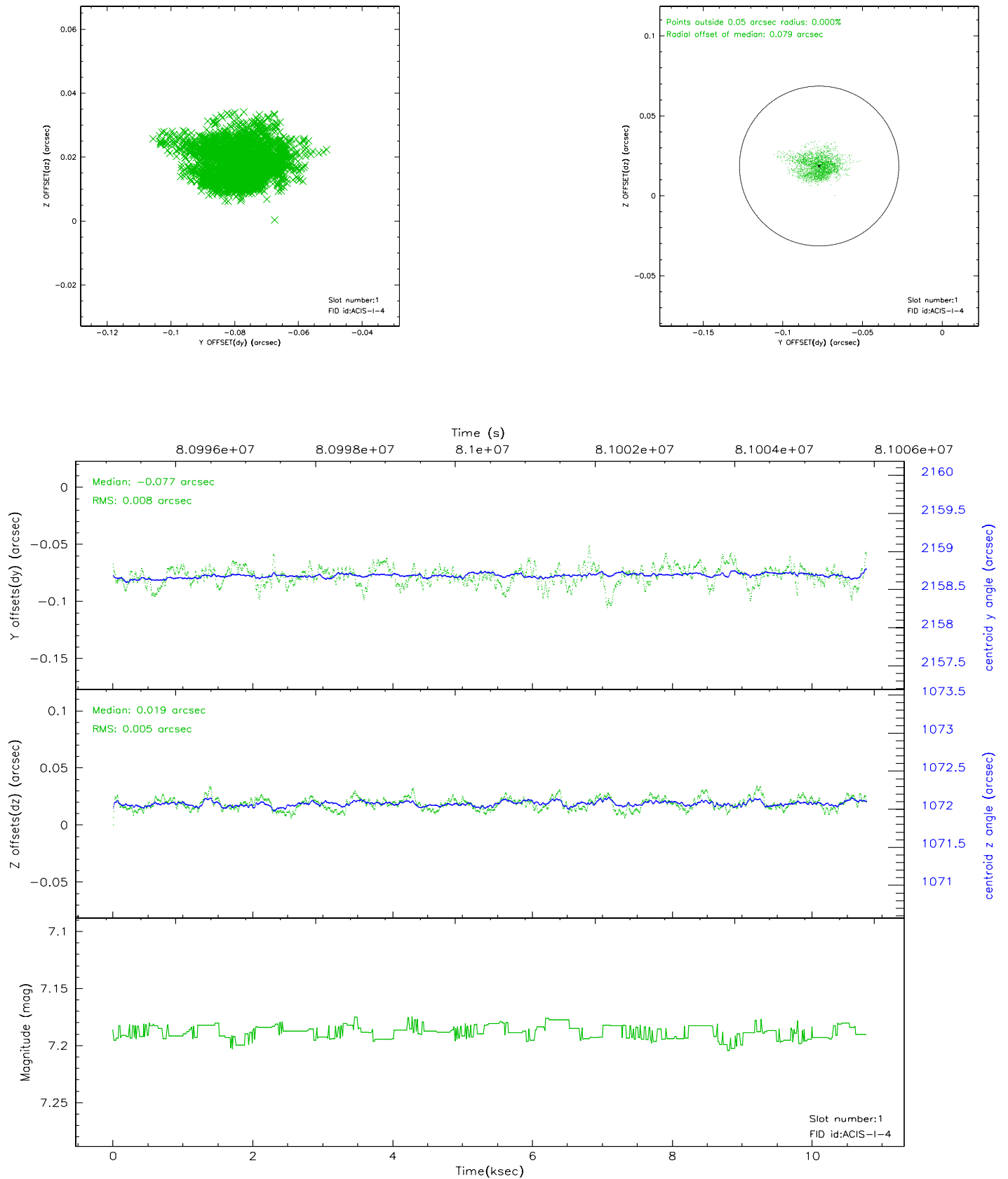


2.5 FID Slots

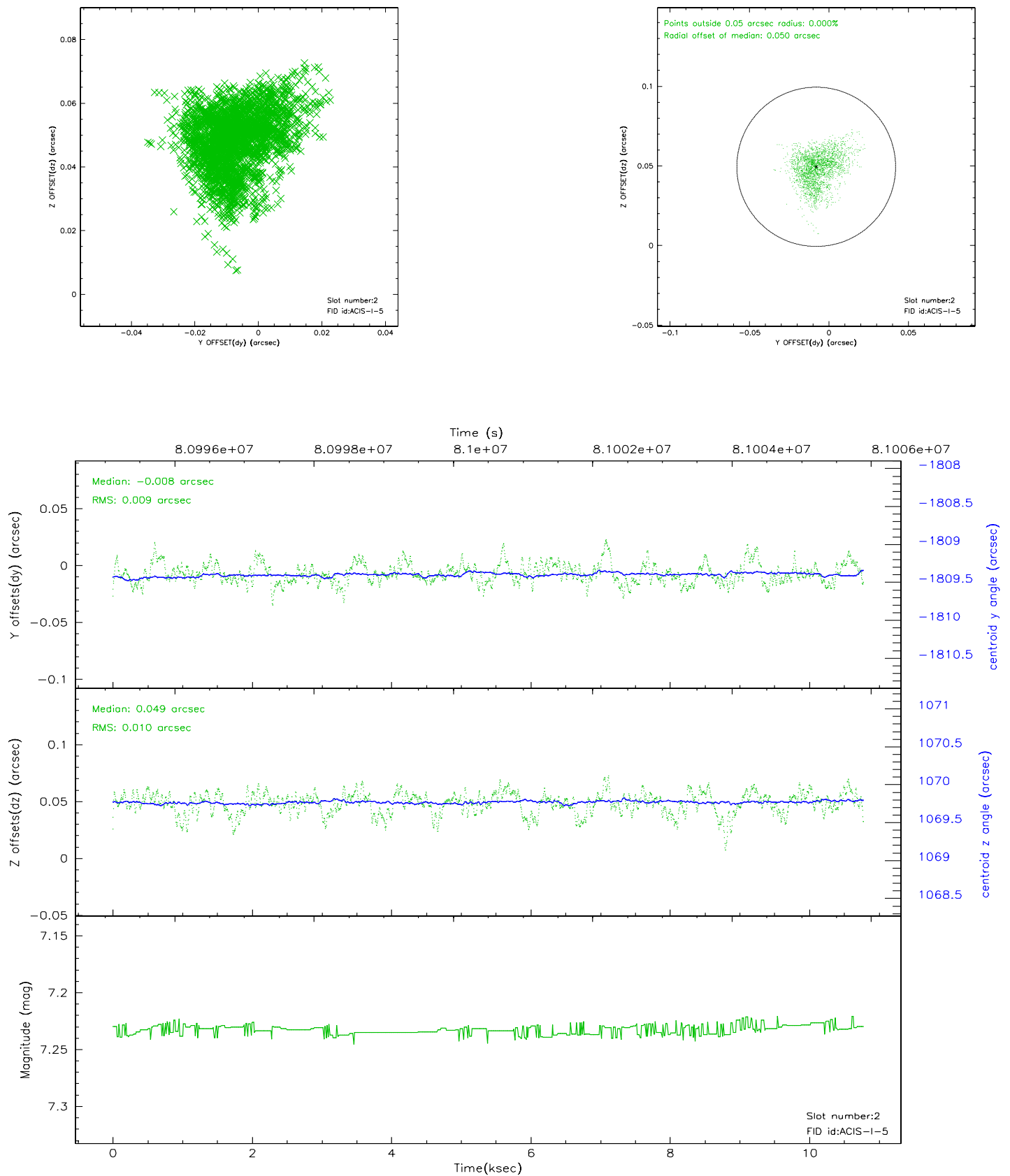
2.5.1 Slot 0



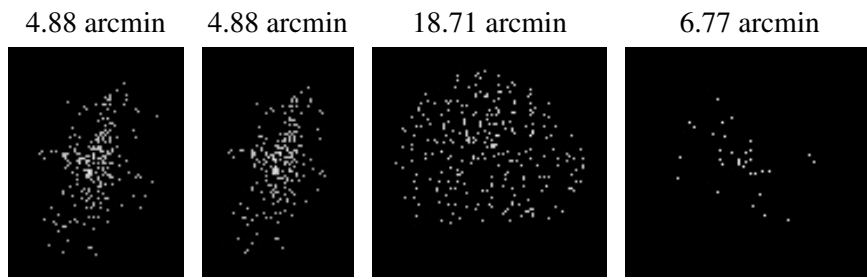
2.5.2 Slot 1



2.5.3 Slot 2



3 Point Sources



A Summary

A.1 Status

V&V Scientist	Beth Sundheim
V&V Date (YYYY-MM-DD)	2007.06.01
V&V Edition	1
V&V Disposition and Status	OK
V&V Charge Time	9.974

A.2 Comments