

V&V Reference Report

L2 ASCDS Version : 8.4.5

Observation 674 - L2 Version 6
Chandra X-Ray Center

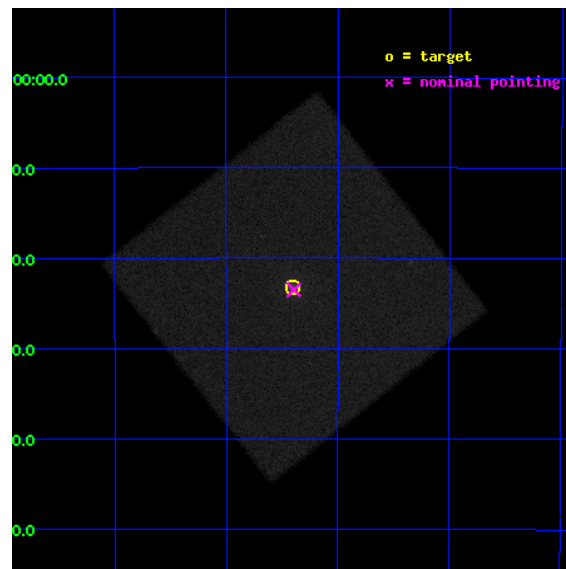
L2 Processing Date : Aug 31 2012

Contents

1	Front	2
2	OBI	3
2.1	OBI	3
2.1.1	Images	3
2.1.2	Parameters	4
2.1.3	Events	4
2.2	Compared Parameters	5
2.3	Aspect	6
2.4	Star Slots	9
2.4.1	Slot 3	9
2.4.2	Slot 4	10
2.4.3	Slot 5	11
2.4.4	Slot 6	12
2.4.5	Slot 7	13
2.5	FID Slots	14
2.5.1	Slot 0	14
2.5.2	Slot 1	15
2.5.3	Slot 2	16
A	Summary	17
A.1	Status	17
A.2	Comments	17

1 Front

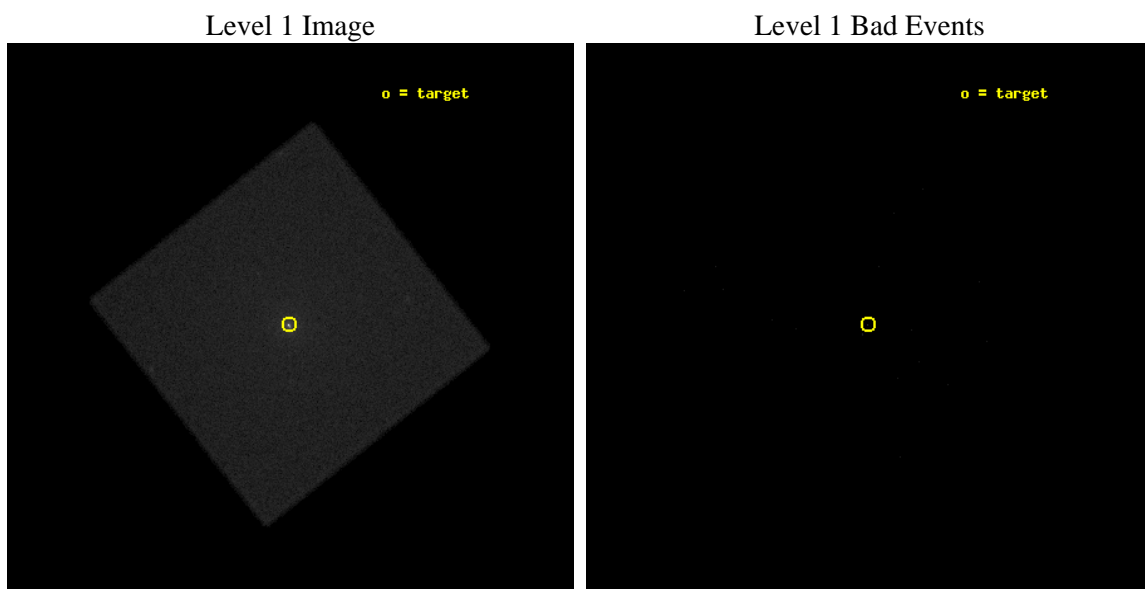
seq_num	400041	Sequence number
obs_id	674	Observation id
title	THE LUMINOUS BURSTING X-RAY SOURCES IN GLOBULAR CLUSTER CORES: LOCATION, LOCATION, AND LOCATION	Proposal title
observer	Dr. Bruce Margon	Principal investigator
object	LILLER 1	Source name
ra_targ	263.35	Observer's specified target RA [deg]
dec_targ	-33.387889	Observer's specified target Dec [deg]
ra_nom	263.34850255824	Nominal RA [deg]
dec_nom	-33.392084658472	Nominal Dec [deg]
roll_nom	276.78199541921	Nominal Roll [deg]
revision	6	Processing version of data
ontime	15120.928686872	[s]
livetime	15041.353280639	Ontime multiplied by DTCOR
l2events	483961	Number of level 2 events



2 OBI

2.1 OBI

2.1.1 Images



2.1.2 Parameters

obi_num	0	Obi number	sched_exp_time	15250.000000	[s] Scheduled observation exposure time
ascdsver	8.4.5	Processing system revision	ontime	15122.081812635	[s]
caldbver	4.5.1.1	 	l1events	687868	Number of level 1 events
date	2012-08-31T12:12:43	Date and time of file creation			
revision	6	Processing version of data			

2.1.3 Events

Level 1 Events

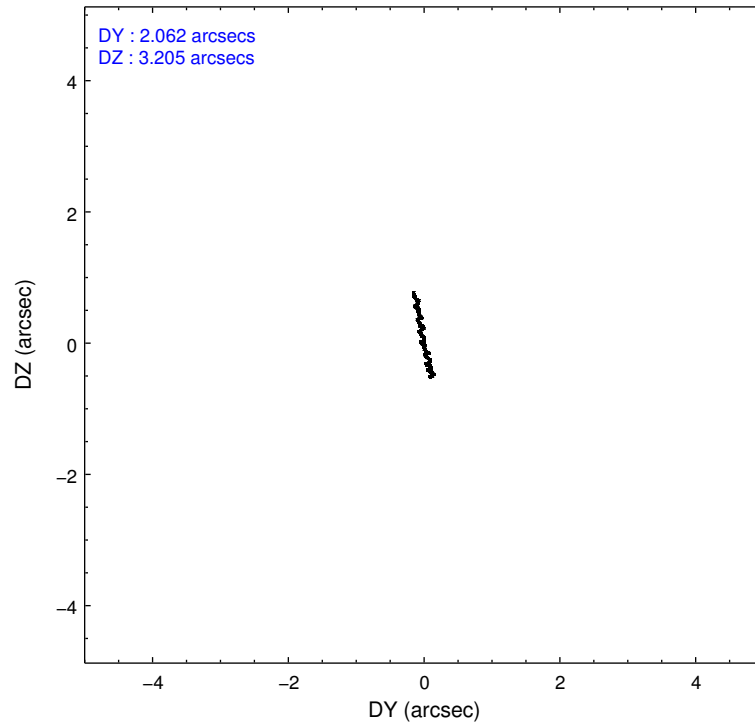
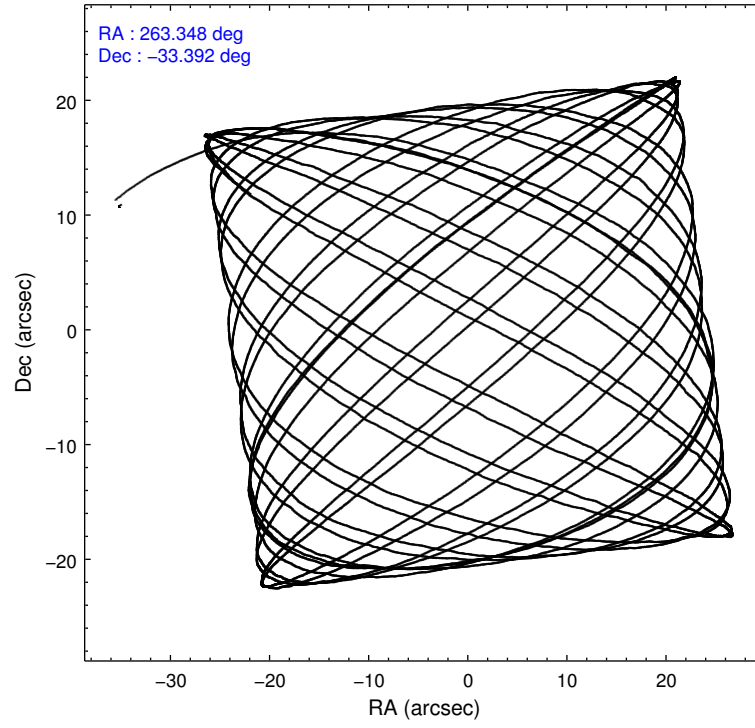
	segment 0
level 1 events	687868
rejected events	6043
rejected %	0%

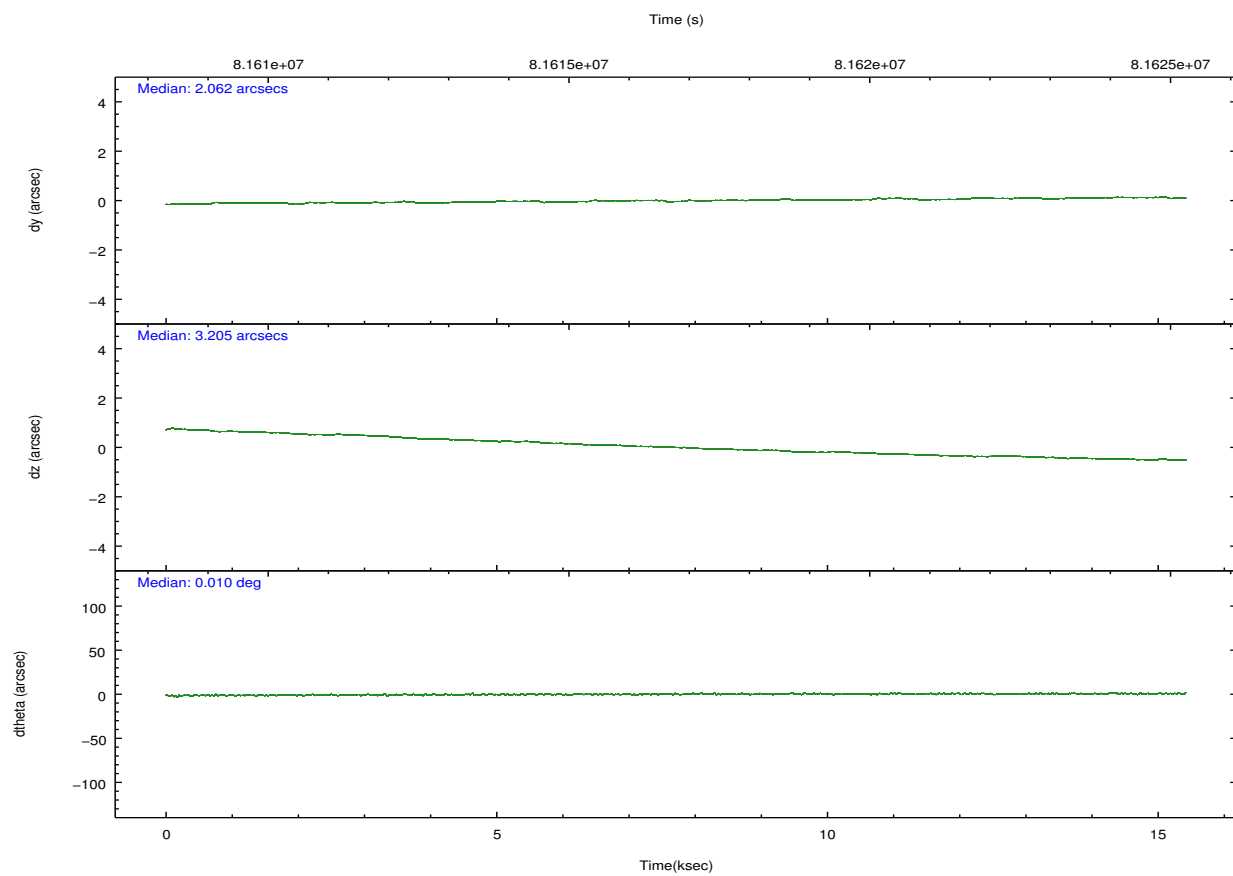
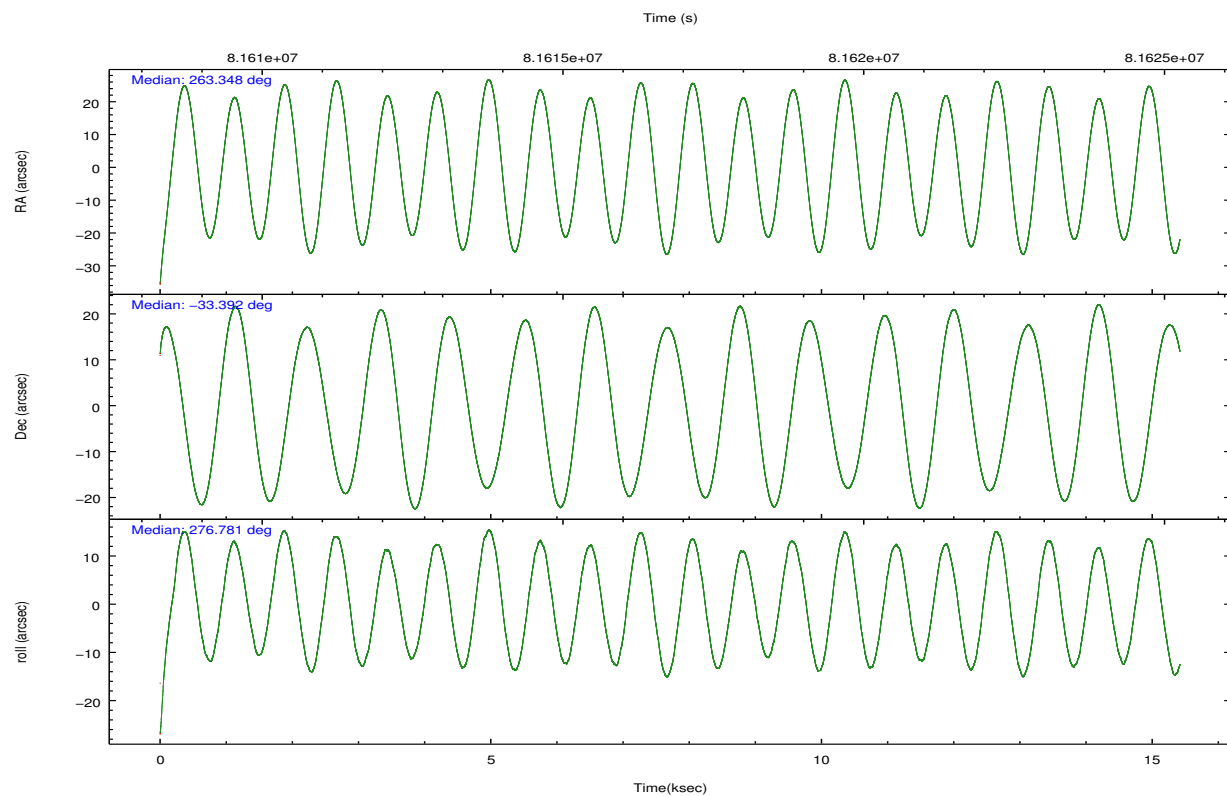
2.2 Compared Parameters

Parameter	Planned	Actual
Instrument	HRC	HRC
Detector	HRC-I	HRC-I
Grating	NONE	NONE
Data mode	OBSERVING	OBSERVING
Observation mode	POINTING	POINTING
[deg] Pointing RA	263.328605	263.3485025582387
[deg] Pointing Dec	-33.370575	-33.39208465847187
[deg] Pointing Roll	276.866538	276.7819954192065
[mm] SIM focus pos	-1.040293	-1.038866356238299
[mm] SIM defocus	0	0.001426264420575141
[mm] SIM translation stage pos	126.985494	126.9854943052878
[mm] SIM translation stage offset	0	-5.413686238853188e-06
[s] Observation start time (MET)	81609241.184000	81608229.84385601
Observation start date	2000-08-02T13:12:57	2000-08-02T12:57:09
[s] Observation end time (MET)	81624491.184000	81625391.419494
Observation end date	2000-08-02T17:27:07	2000-08-02T17:43:11

Parameter	Planned	Actual
Obspar format version number	7	7
Obspar file type	PREDICTED	ACTUAL
Obspar update status	NONE	UPDATED

2.3 Aspect



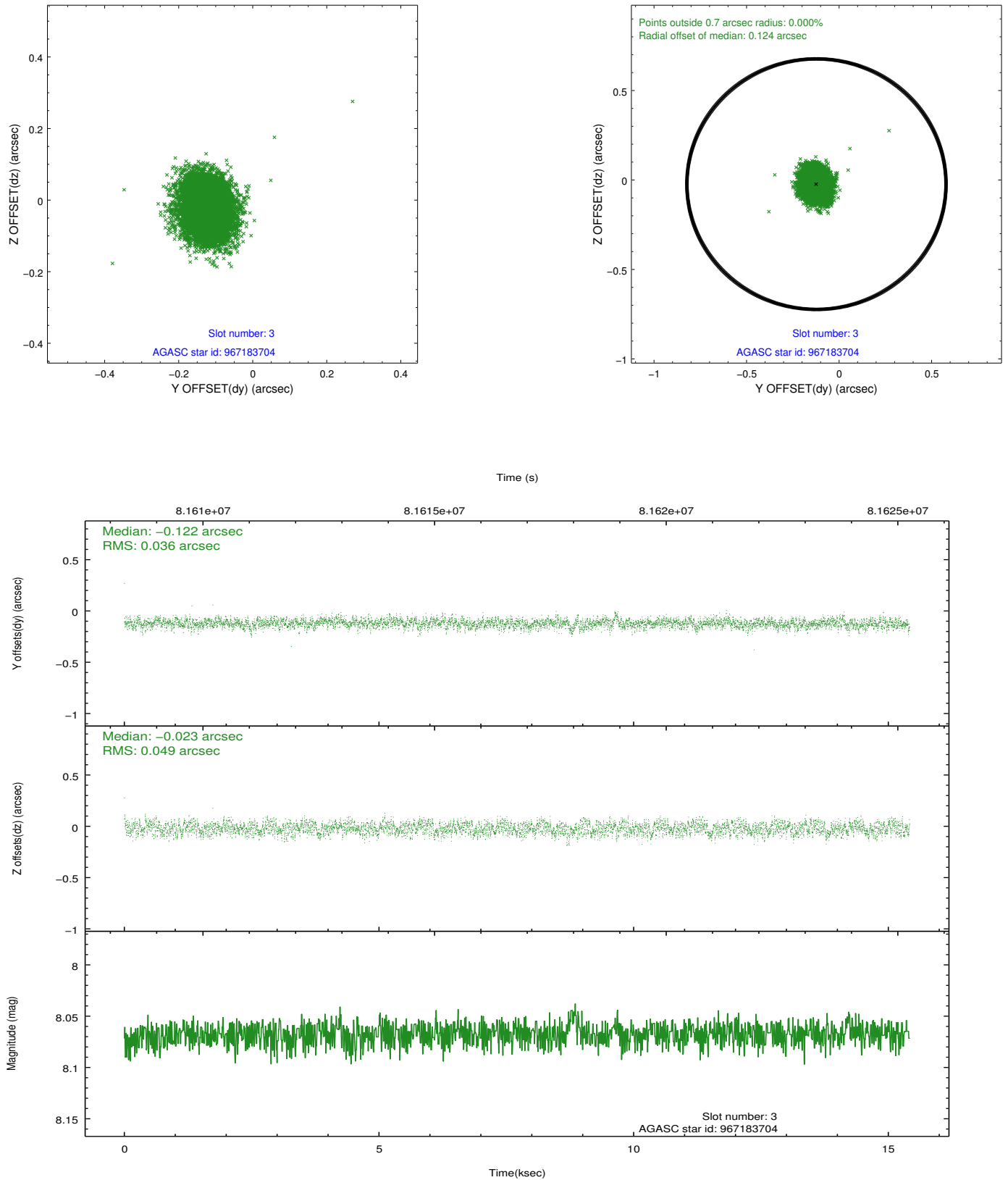


Slot Statistics

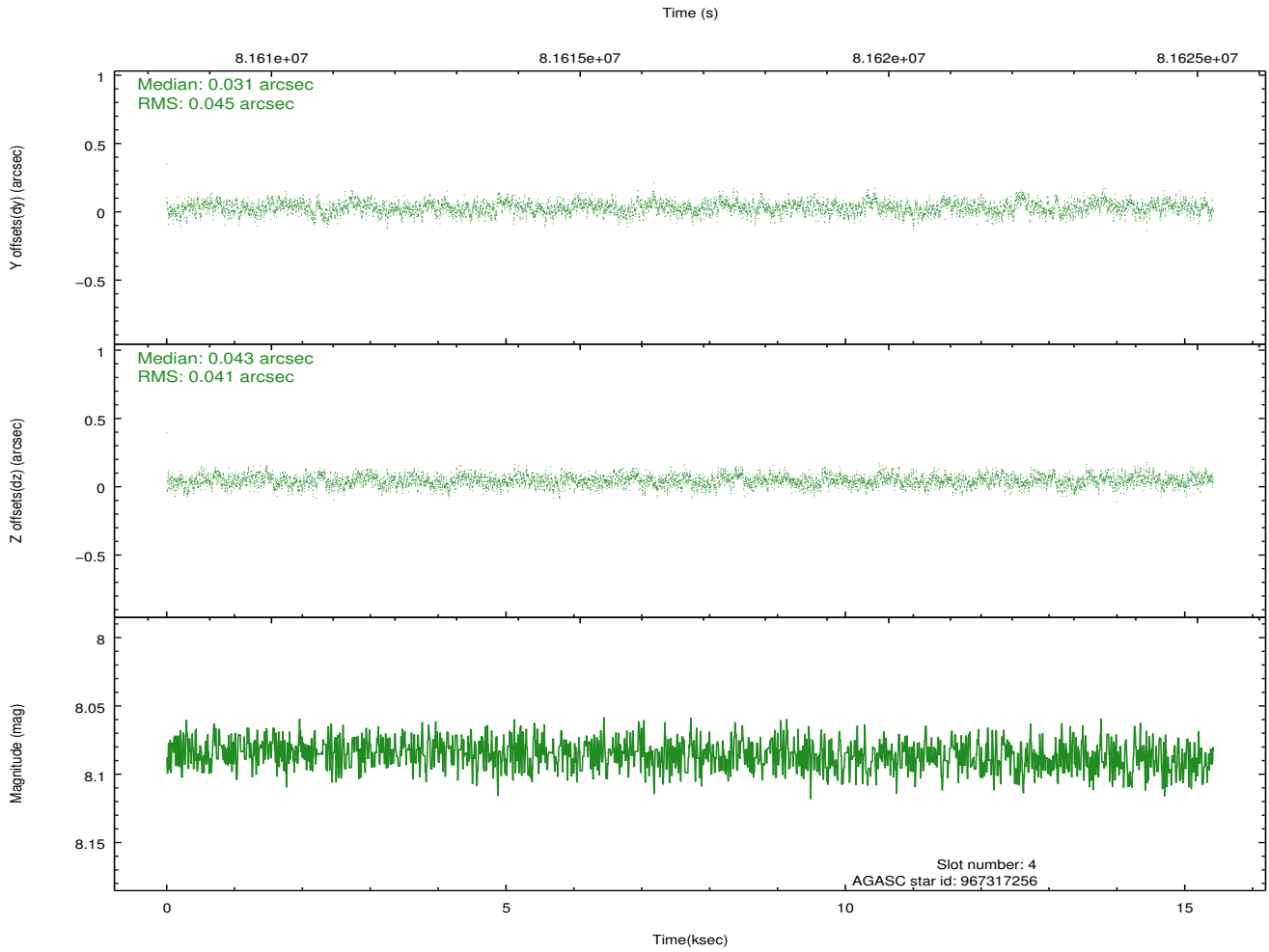
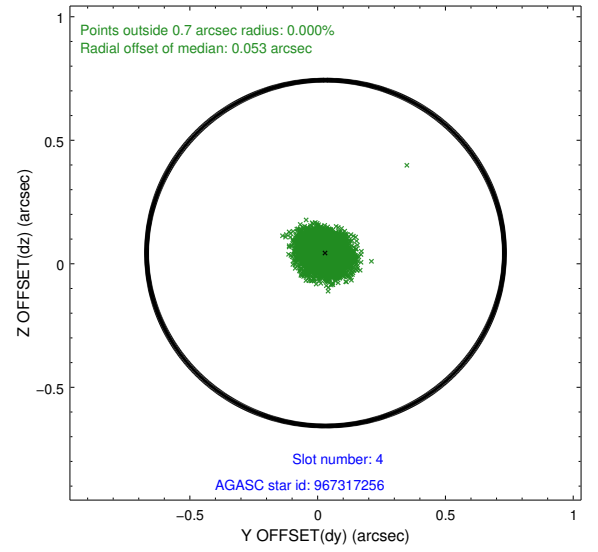
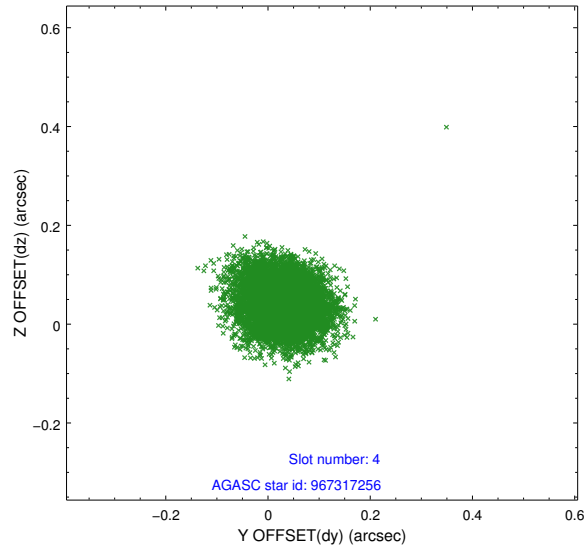
slot	status	id	mag	n_pts	med_dy	med_dz	dr1	dr2	ra	dec	mean_y	mean_z
0	FID	HRC-I-1	6.97	3761	0.066	0.027	0.018	0.026	0.000000	0.000000	-757.48	-1290.99
1	FID	HRC-I-3	7.06	3761	0.022	-0.049	0.020	0.032	0.000000	0.000000	-1186.15	1013.17
2	FID	HRC-I-4	7.01	3760	0.027	-0.066	0.006	0.012	0.000000	0.000000	1285.02	1011.31
3	GUIDE	967183704	8.07	7522	-0.122	-0.023	0.065	0.102	262.631346	-32.929139	-1823.40	-1901.94
4	GUIDE	967317256	8.09	7522	0.031	0.043	0.064	0.103	263.882219	-33.739808	1521.46	1486.60
5	GUIDE	967839296	8.88	7520	0.161	0.132	0.073	0.119	263.977471	-33.849034	1947.87	1720.61
6	GUIDE	967185608	9.10	7521	-0.040	-0.071	0.075	0.124	262.958383	-32.891137	-1845.77	-904.16
7	GUIDE	967314224	9.53	7508	-0.029	-0.081	0.098	0.166	263.382891	-33.073435	-1043.28	291.05

2.4 Star Slots

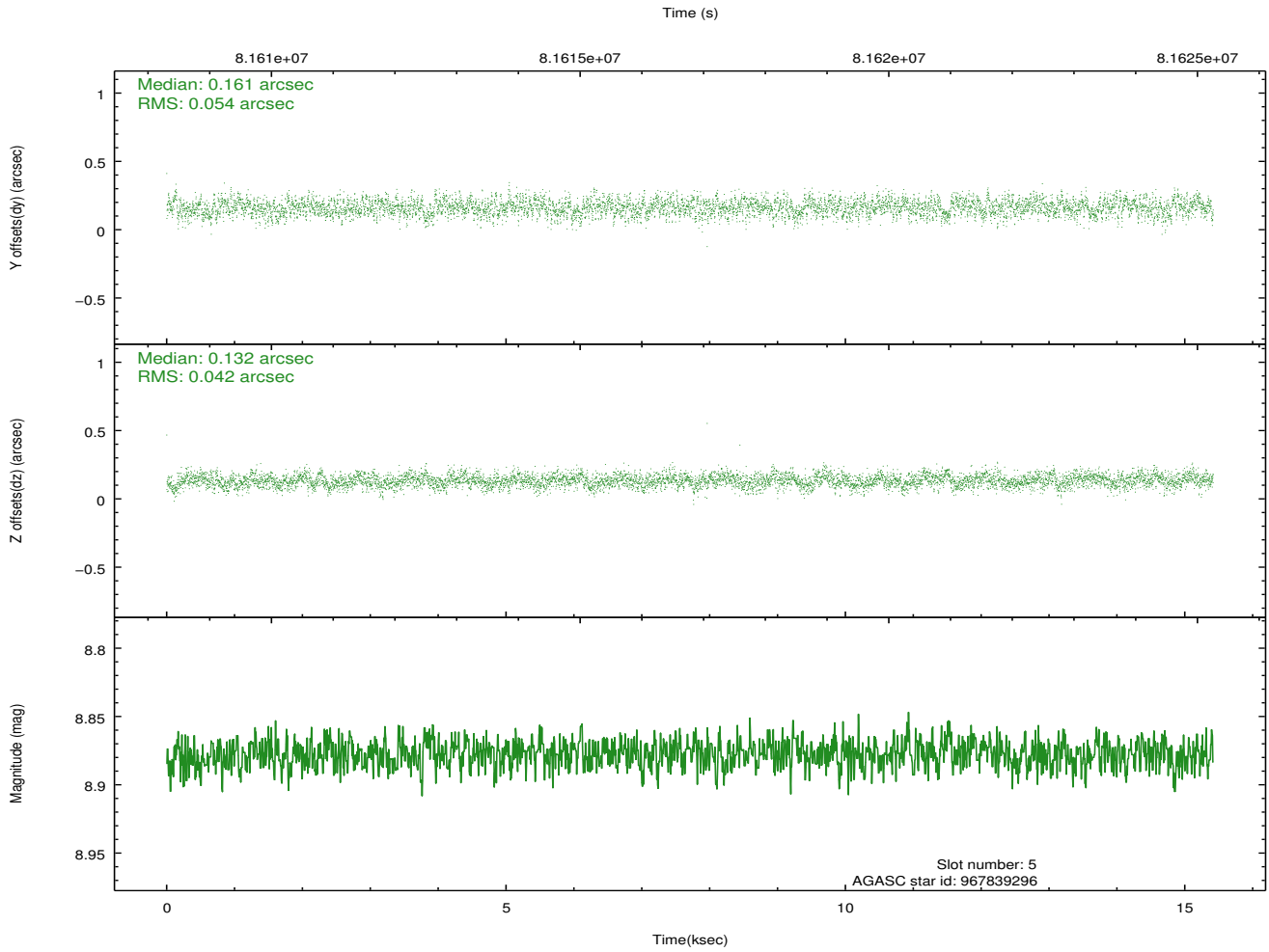
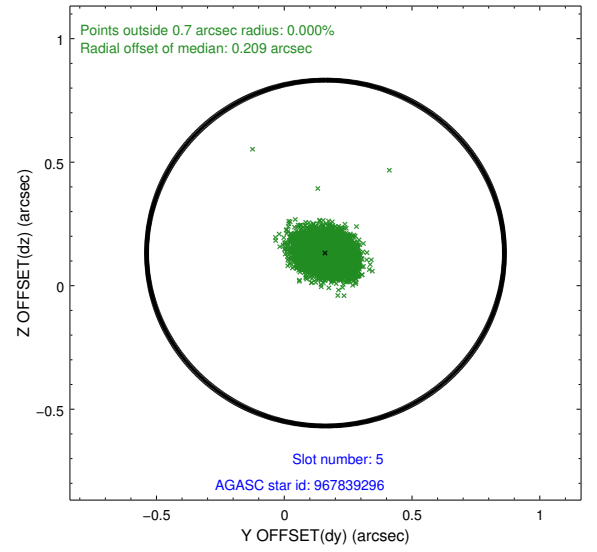
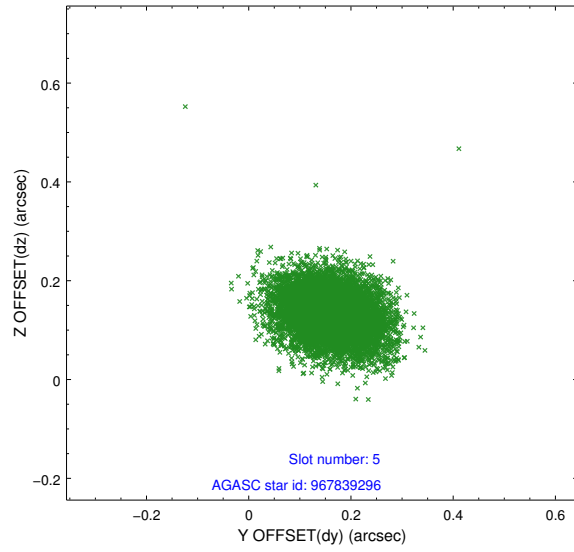
2.4.1 Slot 3



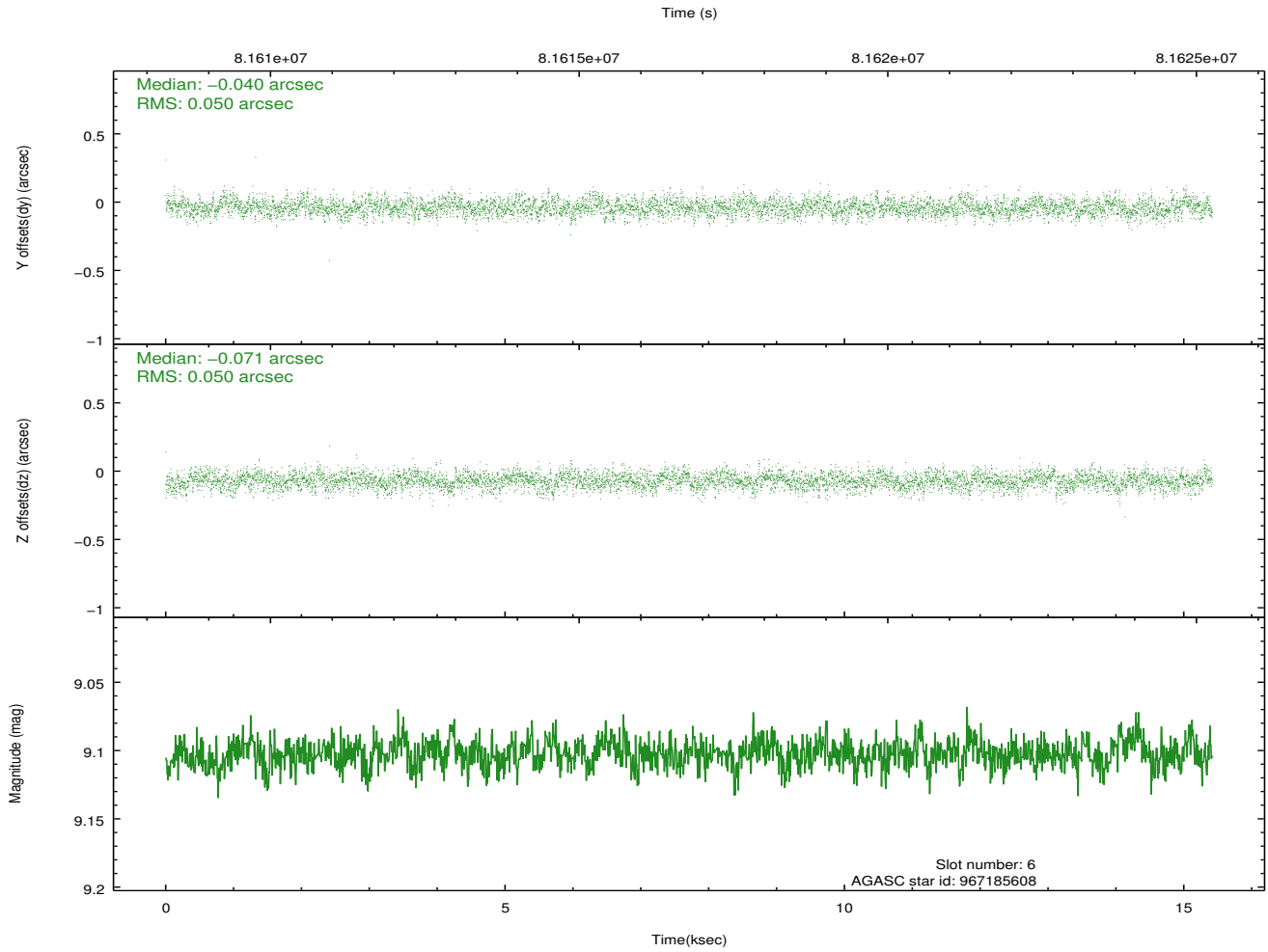
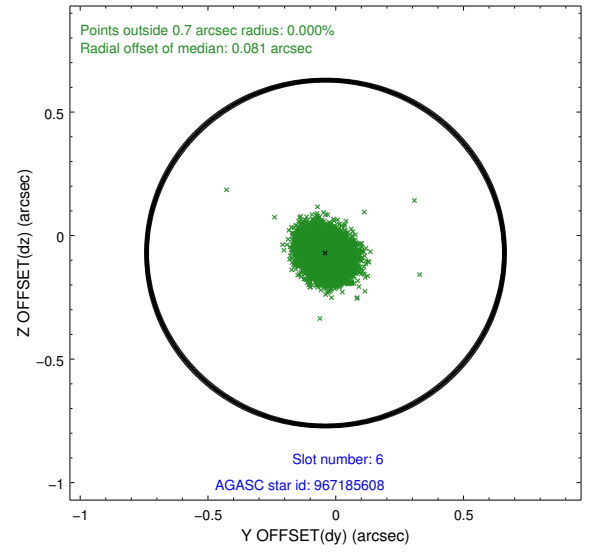
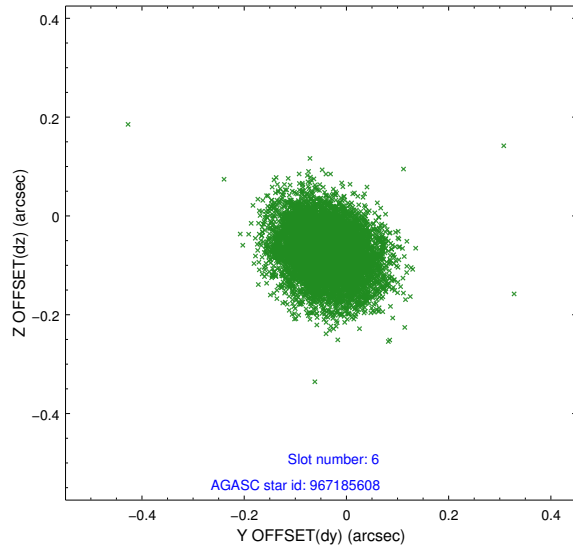
2.4.2 Slot 4



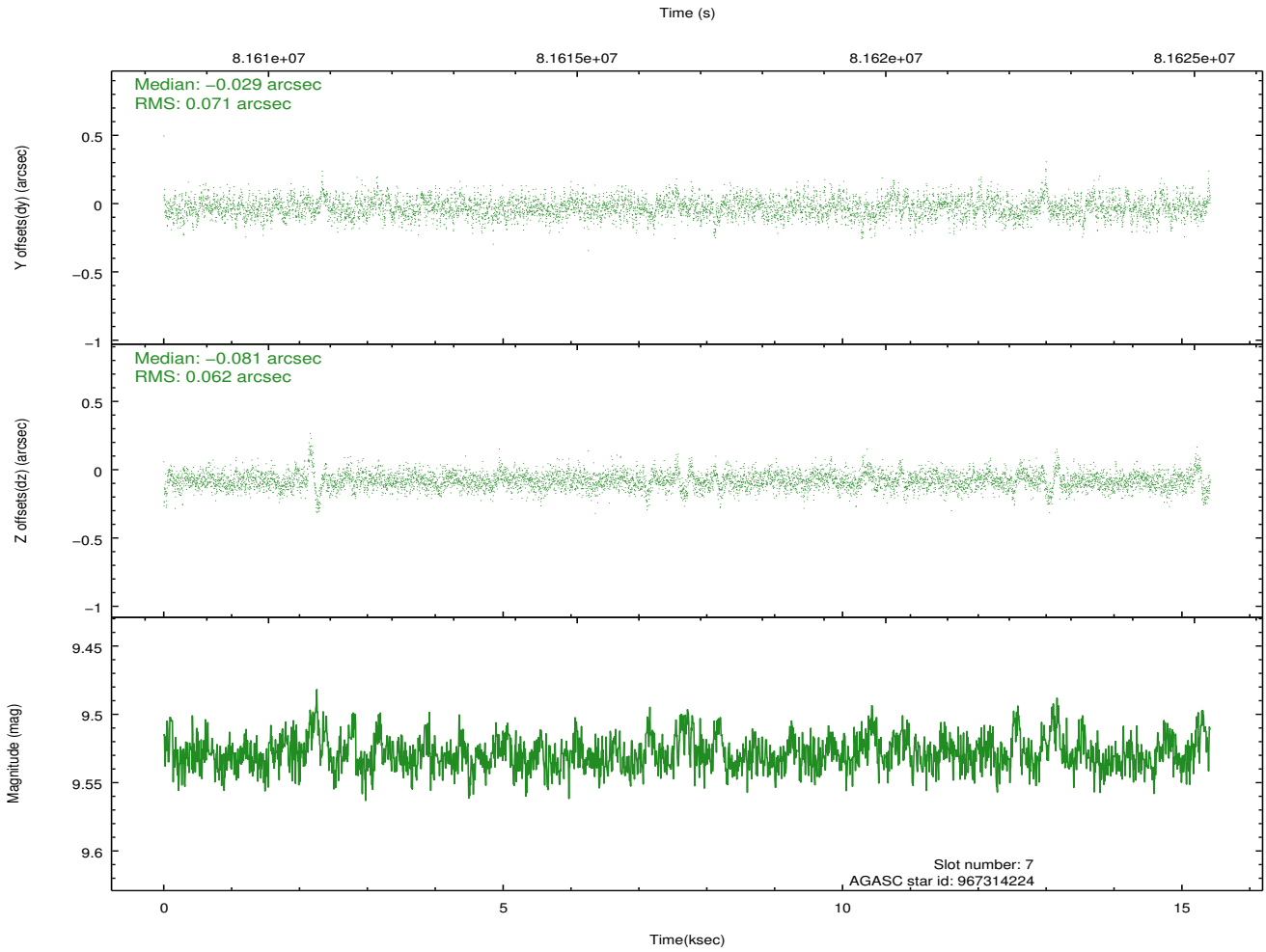
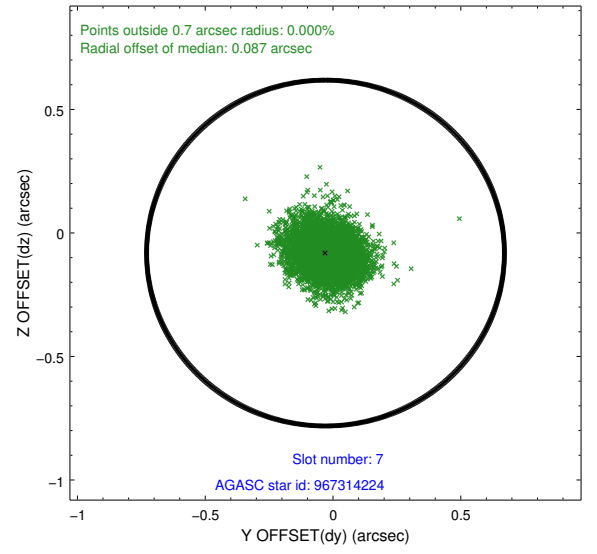
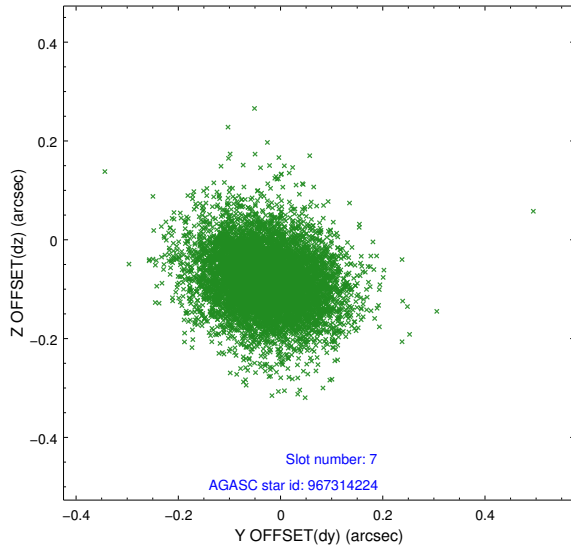
2.4.3 Slot 5



2.4.4 Slot 6

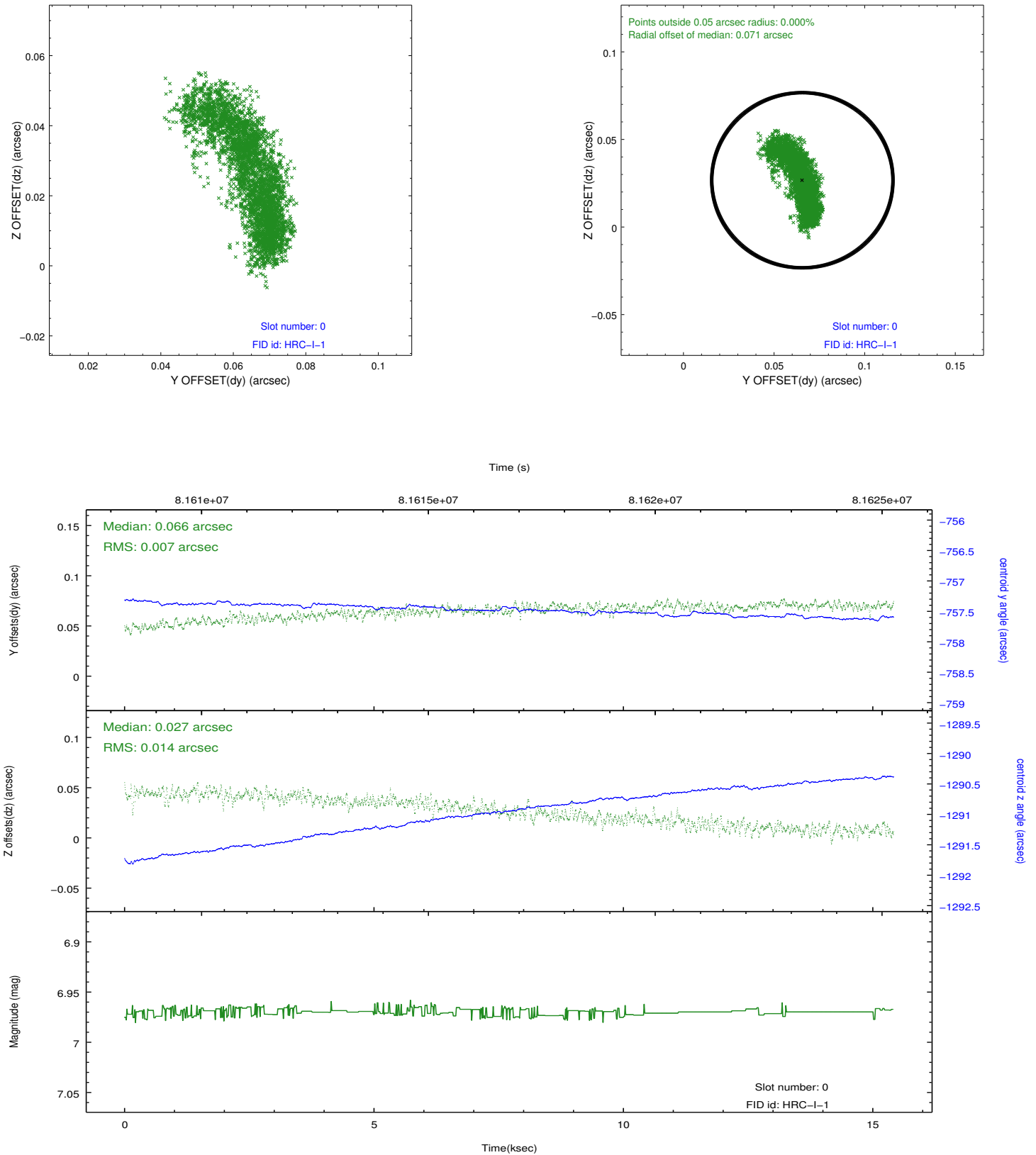


2.4.5 Slot 7

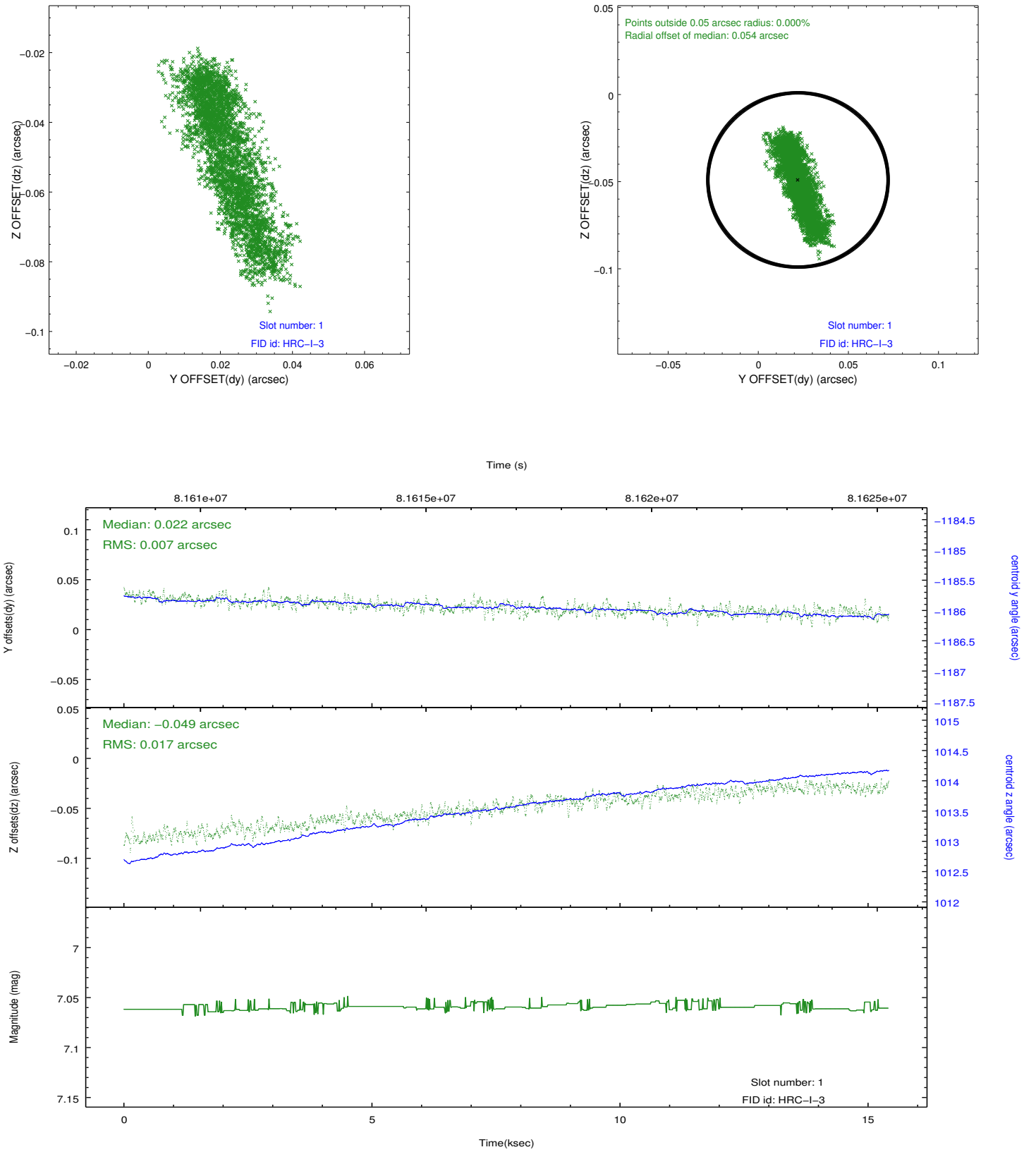


2.5 FID Slots

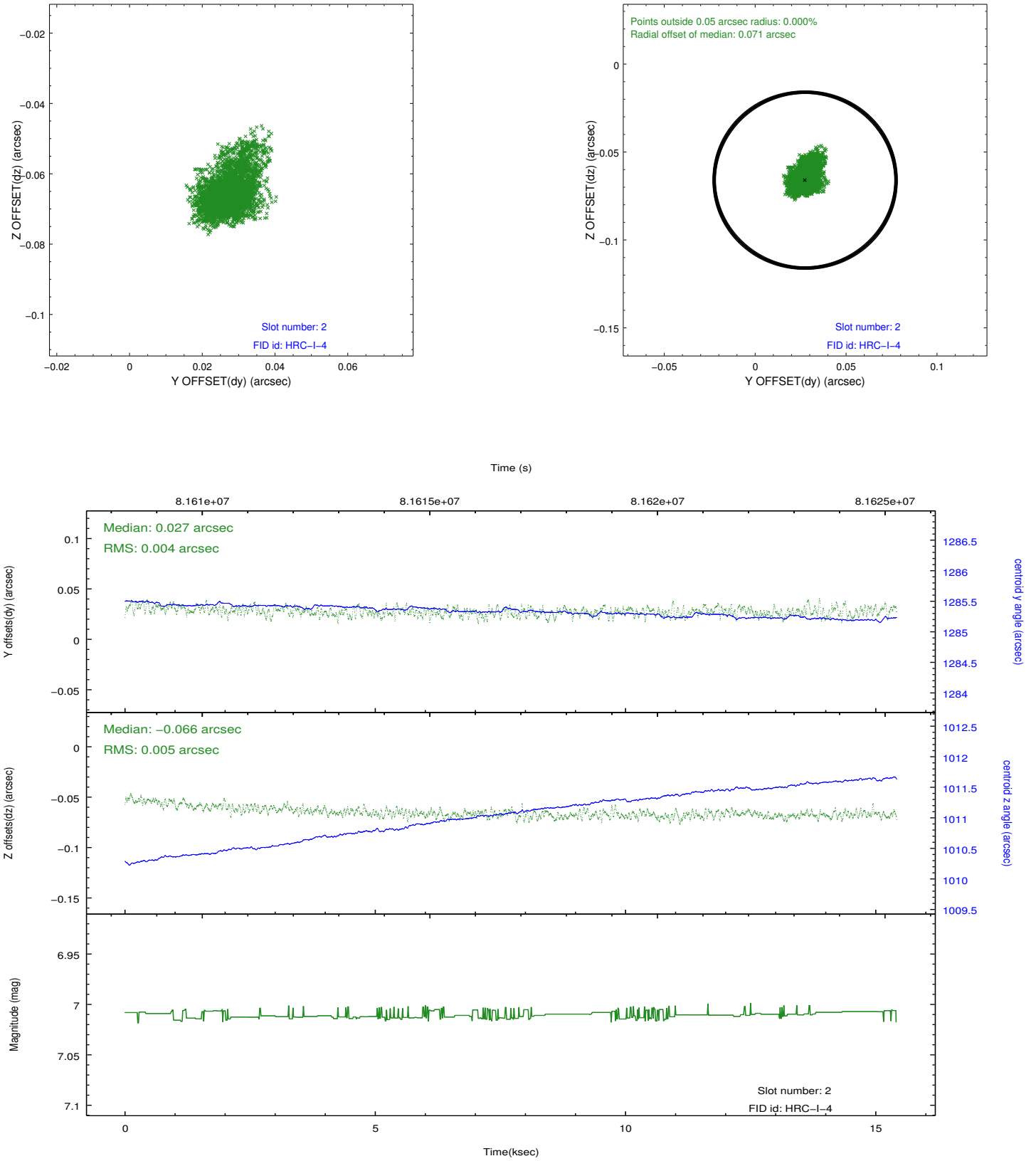
2.5.1 Slot 0



2.5.2 Slot 1



2.5.3 Slot 2



A Summary

A.1 Status

V&V Scientist	Jen Lauer
V&V Date (YYYY-MM-DD)	2012.09.06
V&V Edition	1
V&V Disposition and Status	OK
V&V Charge Time	15.009

A.2 Comments

Charge time for this ObsId remains at previous value of 15.009 ks although with the current processing the charge time would have been 15.12 ksec.