

V&V Reference Report

L2 ASCDS Version : 7.6.10

Observation 669 - L2 Version 001
Chandra X-Ray Center

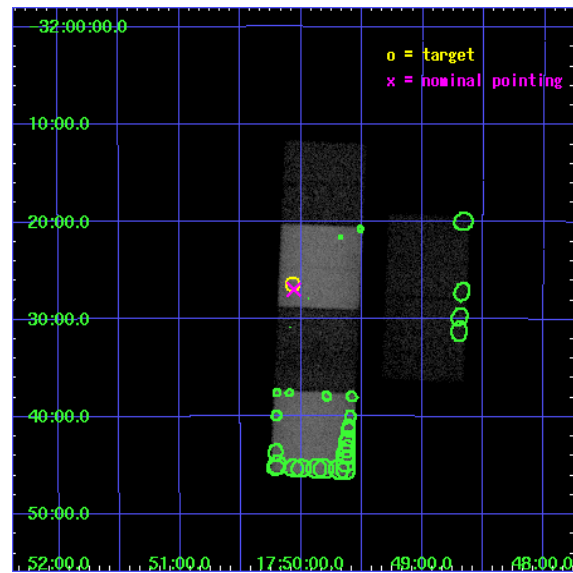
L2 Processing Date : Jun 6 2007

Contents

1	Front	2
2	OBI	3
2.1	OBI	3
2.1.1	Images	3
2.1.2	Bias	3
2.1.3	Parameters	4
2.1.4	Events	4
2.2	Compared Parameters	5
2.3	Aspect	6
2.4	Star Slots	9
2.4.1	Slot 3	9
2.4.2	Slot 4	10
2.4.3	Slot 5	11
2.4.4	Slot 6	12
2.4.5	Slot 7	13
2.5	FID Slots	14
2.5.1	Slot 0	14
2.5.2	Slot 1	15
2.5.3	Slot 2	16
3	Point Sources	17
A	Summary	18
A.1	Status	18
A.2	Comments	18

1 Front

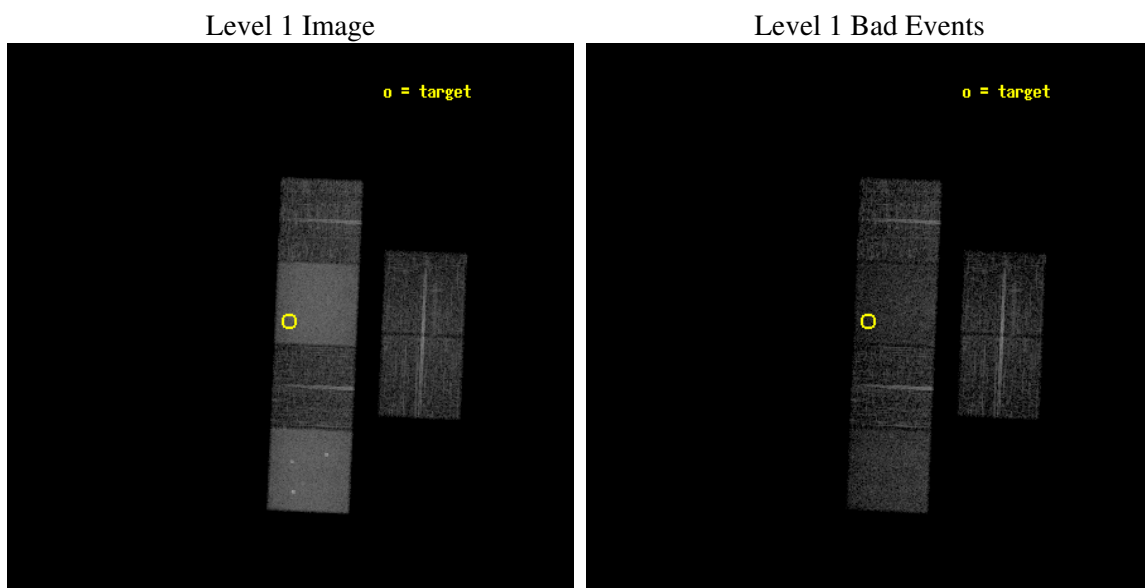
seq_num	400036
obs_id	669
title	THE FAINTEST 'FIELD' LOW-MASS X-RAY BINARIES
observer	PROF MICHIEL VAN DER KLIS
object	1746.7-3224
dtcycle	0
cycle	P
ra_targ	267.51625
dec_targ	-32.439583
ra_nom	267.51467659383
dec_nom	-32.449443140174
roll_nom	272.46443636709
revision	2
ontime	6801.5618163496
livetime	6715.4363452222
ontime2	5897.3273793012
ontime3	5958.9063517004
ontime5	6827.4894183427
ontime6	5994.5573329031
ontime7	6801.5618163496
ontime8	6004.2802736461
l2events	176137



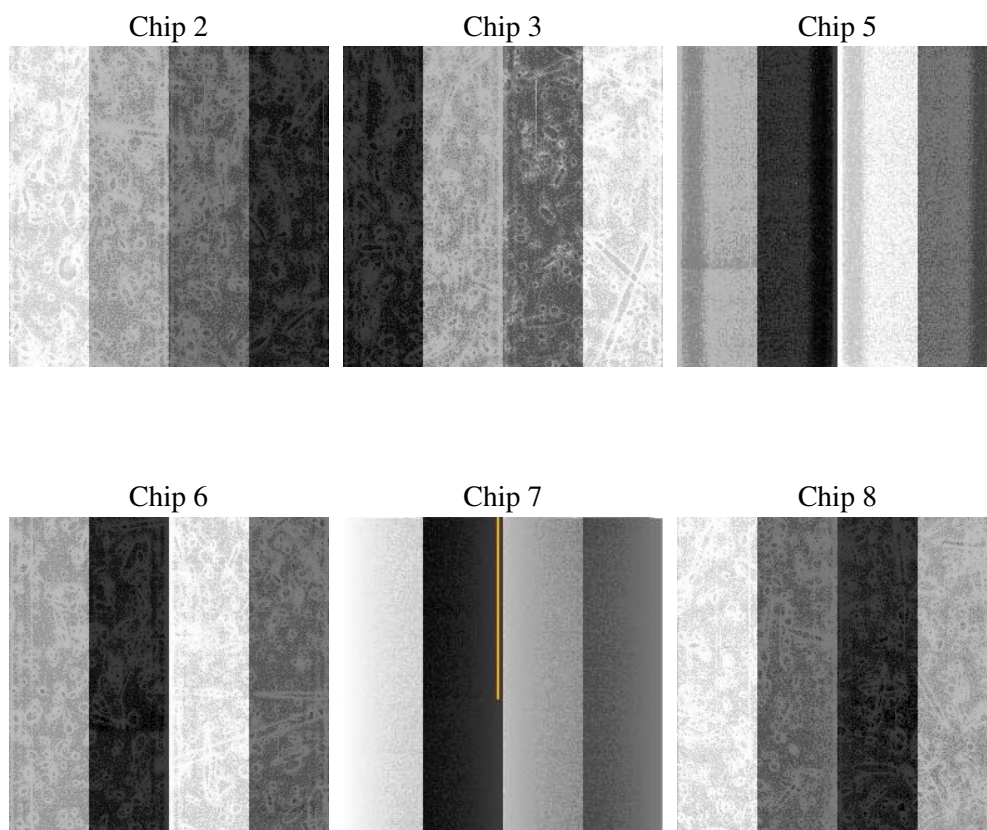
2 OBI

2.1 OBI

2.1.1 Images



2.1.2 Bias



2.1.3 Parameters

obi_num	0
ascdsver	7.6.10
caldsver	3.4.0
date	2007-06-06T12:54:22
revision	2

sched_exp_time	6975.976000
ontime	6801.5618163496
ontime2	5897.3273793012
ontime3	5958.9063517004
ontime5	6827.4894183427
ontime6	5994.5573329031
ontime7	6801.5618163496
ontime8	6004.2802736461
l1events	386983

2.1.4 Events

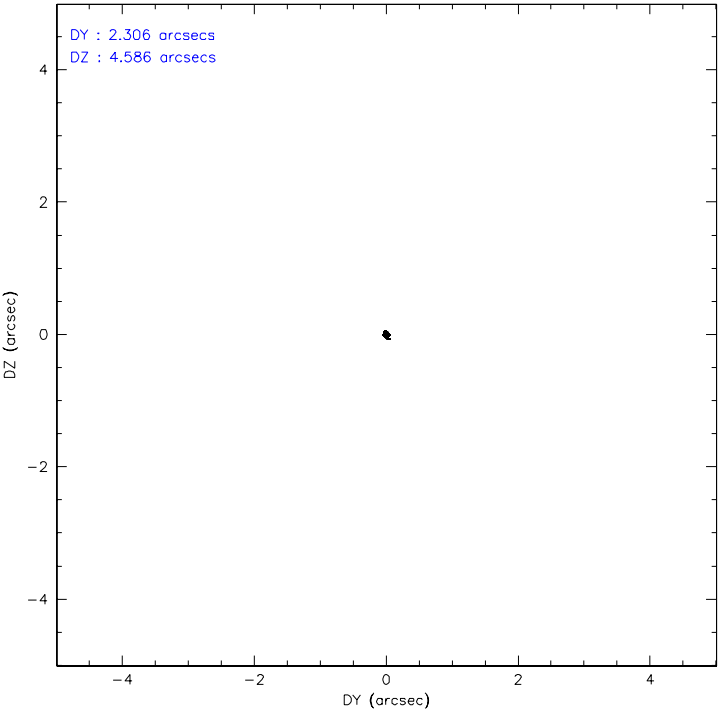
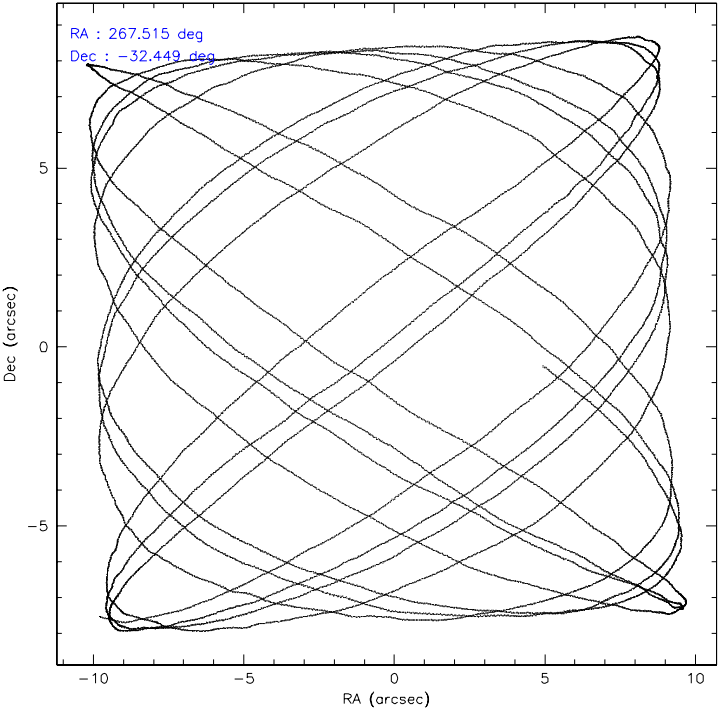
	ccd 2	ccd 3	ccd 5	ccd 6	ccd 7	ccd 8
level 1 events	39357	37091	109679	41253	111145	48458
rejected events	33479	31004	34788	32513	32076	36377
rejected %	85%	83%	31%	78%	28%	75%

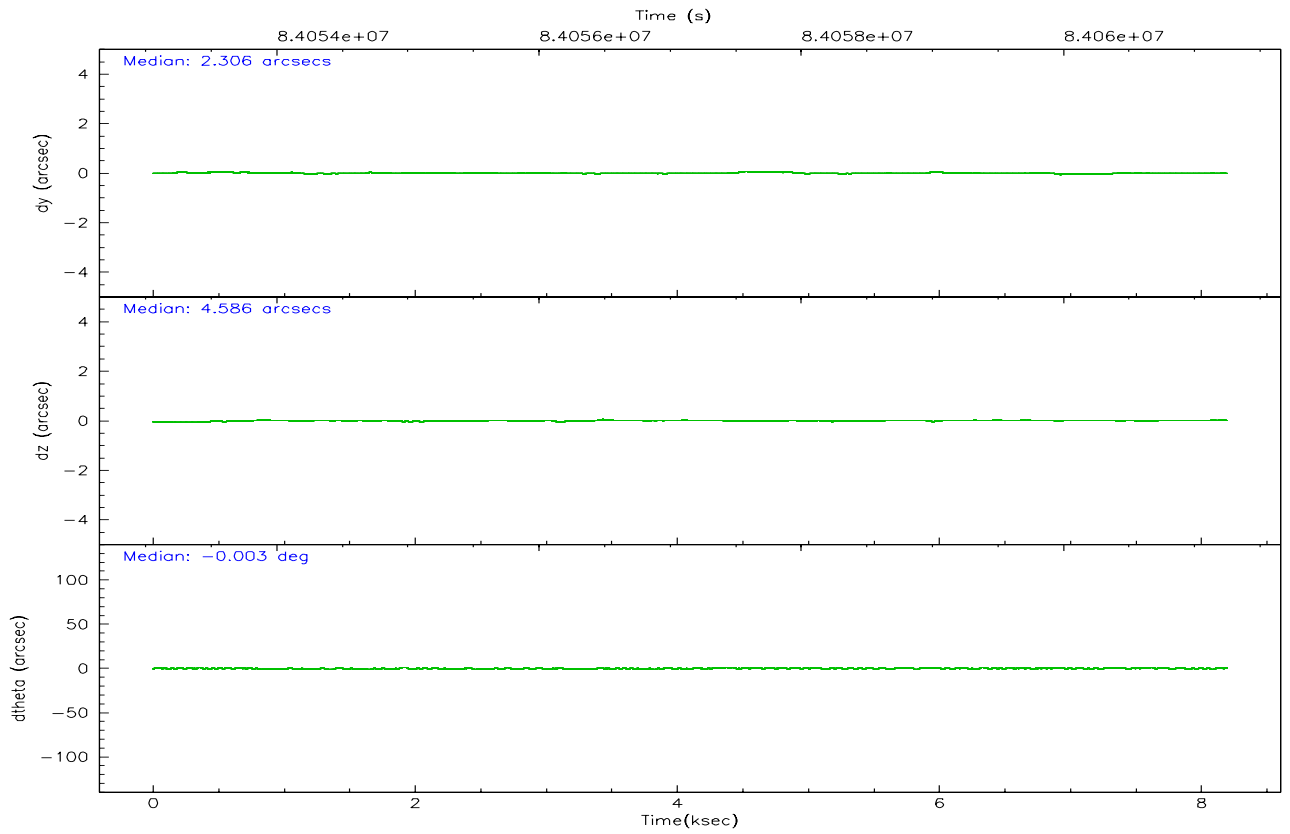
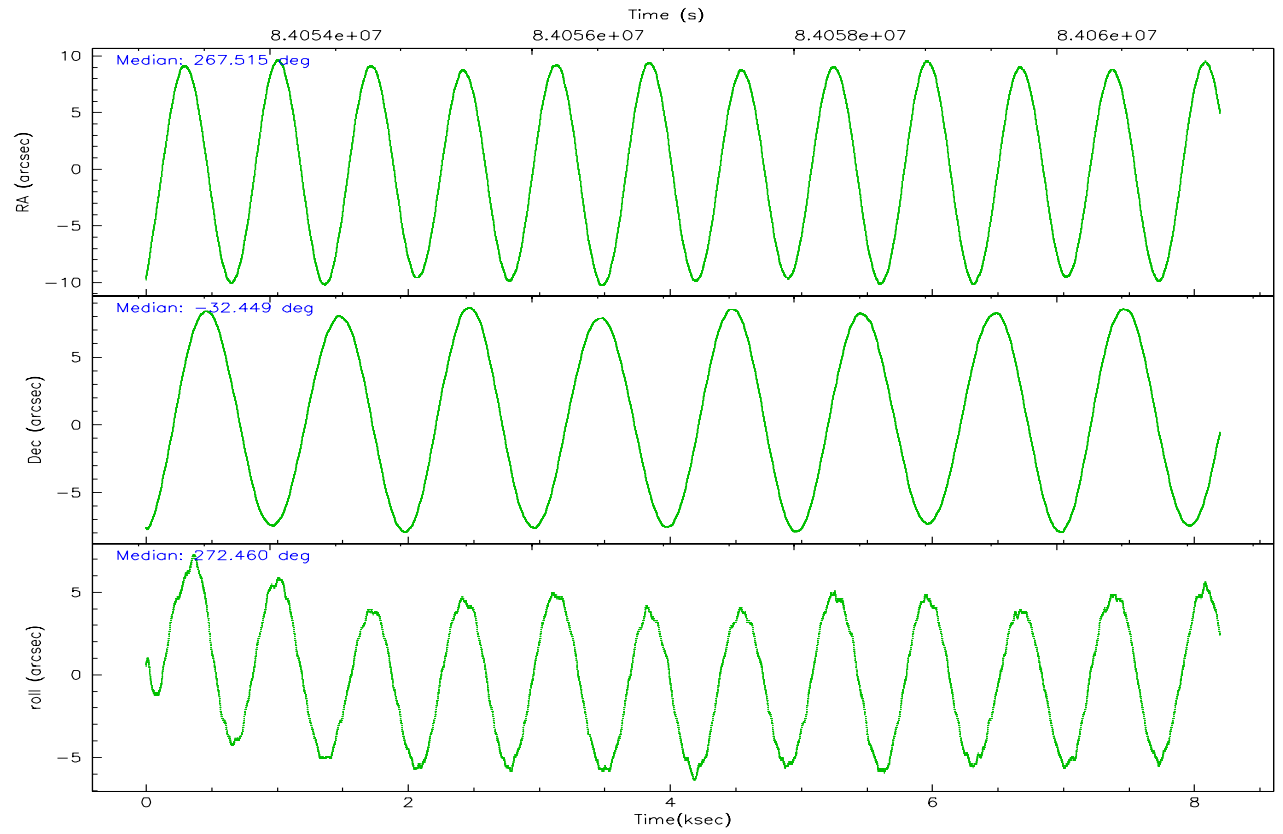
	ccd 2	ccd 3	ccd 5	ccd 6	ccd 7	ccd 8
grade 0 events	3218	3454	12673	5596	9188	5978
	8%	9%	11%	13%	8%	12%
grade 1 events	22	19	119	26	91	36
	0%	0%	0%	0%	0%	0%
grade 2 events	1112	1095	20642	1330	14185	2181
	2%	2%	18%	3%	12%	4%
grade 3 events	451	432	4288	482	6427	933
	1%	1%	3%	1%	5%	1%
grade 4 events	388	378	4301	452	6588	857
	0%	1%	3%	1%	5%	1%
grade 5 events	1263	1338	4883	1497	5309	1884
	3%	3%	4%	3%	4%	3%
grade 6 events	713	728	33059	886	42746	2138
	1%	1%	30%	2%	38%	4%
grade 7 events	32190	29647	29714	30984	26611	34451
	81%	79%	27%	75%	23%	71%

2.2 Compared Parameters

Parameter	Planned	Actual	Parameter	Planned	Actual
Instrument	ACIS	ACIS	Obspar format version number	6	6
Detector	ACIS-235678	ACIS-235678	Obspar file type	PREDICTED	ACTUAL
Grating	NONE	NONE	Obspar update status	NONE	UPDATED
Data mode	VFAINT	VFAINT	Number of optional ACIS chips dropped	0	0
Observation mode	POINTING	POINTING	On-chip summing requested	N	N
Pointing RA	267.497044	267.5146765938341	Subarray requested	NONE	NONE
Pointing Dec	-32.426383	-32.44944314017373	Alternating exposures requested	N	N
Pointing Roll	272.298346	272.4644363670851	Primary exposure time	3.200000	3.2
SIM focus pos (mm)	-0.684267	-0.6828225247311905			
SIM defocus (mm)	0	0.001444936568705701			
SIM translation stage pos (mm)	-182.132523	-182.1370004450064			
SIM translation stage offset (mm)	-8	-7.995522138001405			
Observation start time	84054277.184000	84052802.147808			
Observation start date	2000-08-30T20:23:33	2000-08-30T20:00:02			
Observation end time	84061253.184000	84061566.92313699			
Observation end date	2000-08-30T22:19:49	2000-08-30T22:26:06			
Read mode	TIMED	TIMED			

2.3 Aspect



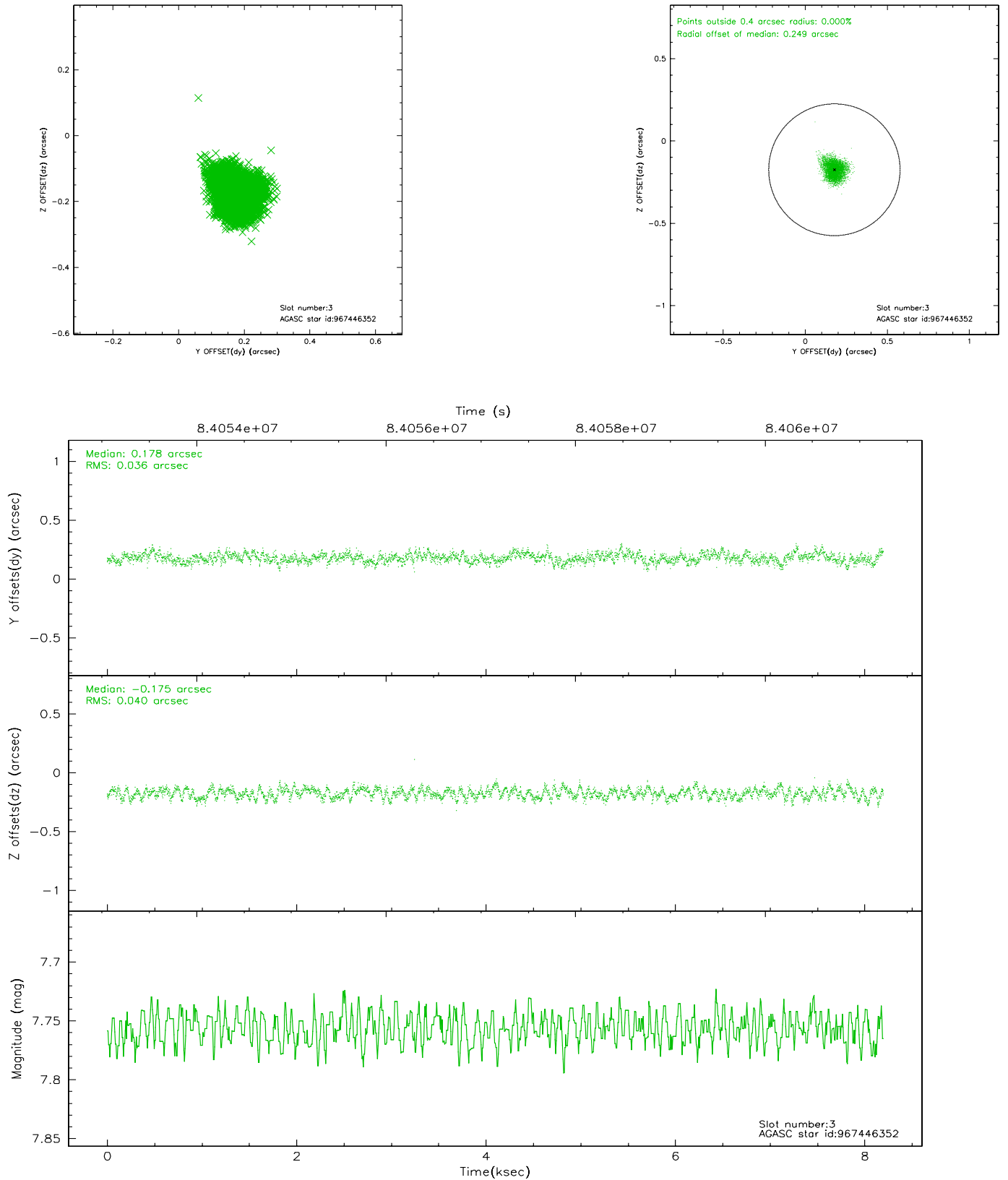


Slot Statistics

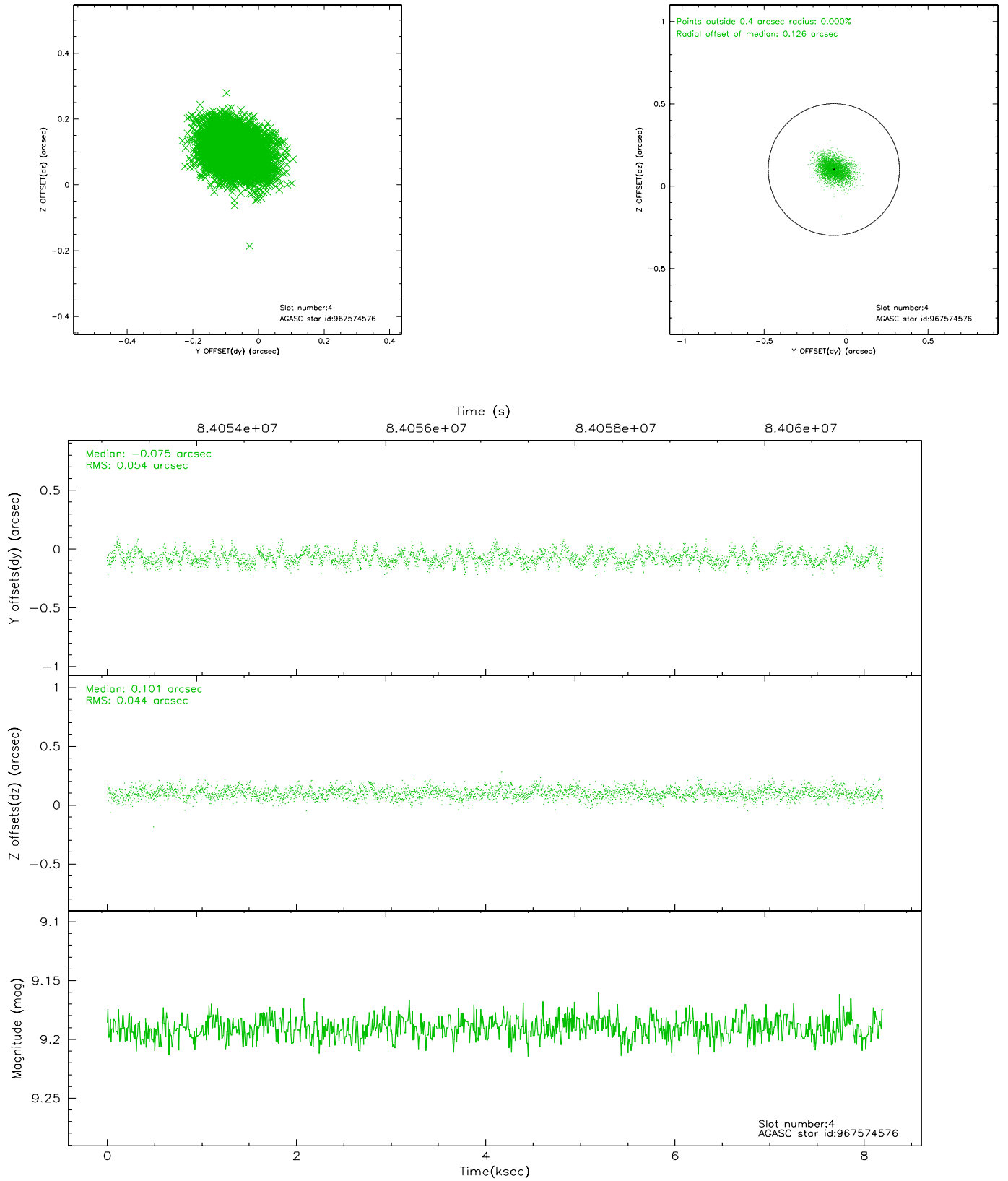
slot	status	id	mag	n_pts	med_dy	med_dz	dr1	dr2	ra	dec	mean_y	mean_z
0	FID	ACIS-S-3	7.35	2000	-0.065	0.001	0.008	0.012	0.000000	0.000000	58.73	-2019.46
1	FID	ACIS-S-4	7.18	2000	0.030	0.034	0.005	0.009	0.000000	0.000000	2159.05	17.21
2	FID	ACIS-S-5	7.23	2000	0.007	-0.027	0.006	0.011	0.000000	0.000000	-1806.31	11.75
3	GUIDE	967446352	7.76	3999	0.178	-0.175	0.058	0.091	267.069988	-32.671157	832.84	-1328.99
4	GUIDE	967574576	9.19	3998	-0.075	0.101	0.074	0.123	267.763701	-32.375199	-149.18	816.90
5	GUIDE	967574992	9.12	3998	0.091	0.175	0.068	0.110	268.024577	-32.877886	1693.32	1528.57
6	GUIDE	967573664	9.26	3999	0.016	0.049	0.068	0.113	267.778533	-32.307665	-389.86	872.98
7	GUIDE	967442904	9.67	3999	-0.209	-0.148	0.111	0.175	266.669977	-31.962290	-1759.79	-2457.87

2.4 Star Slots

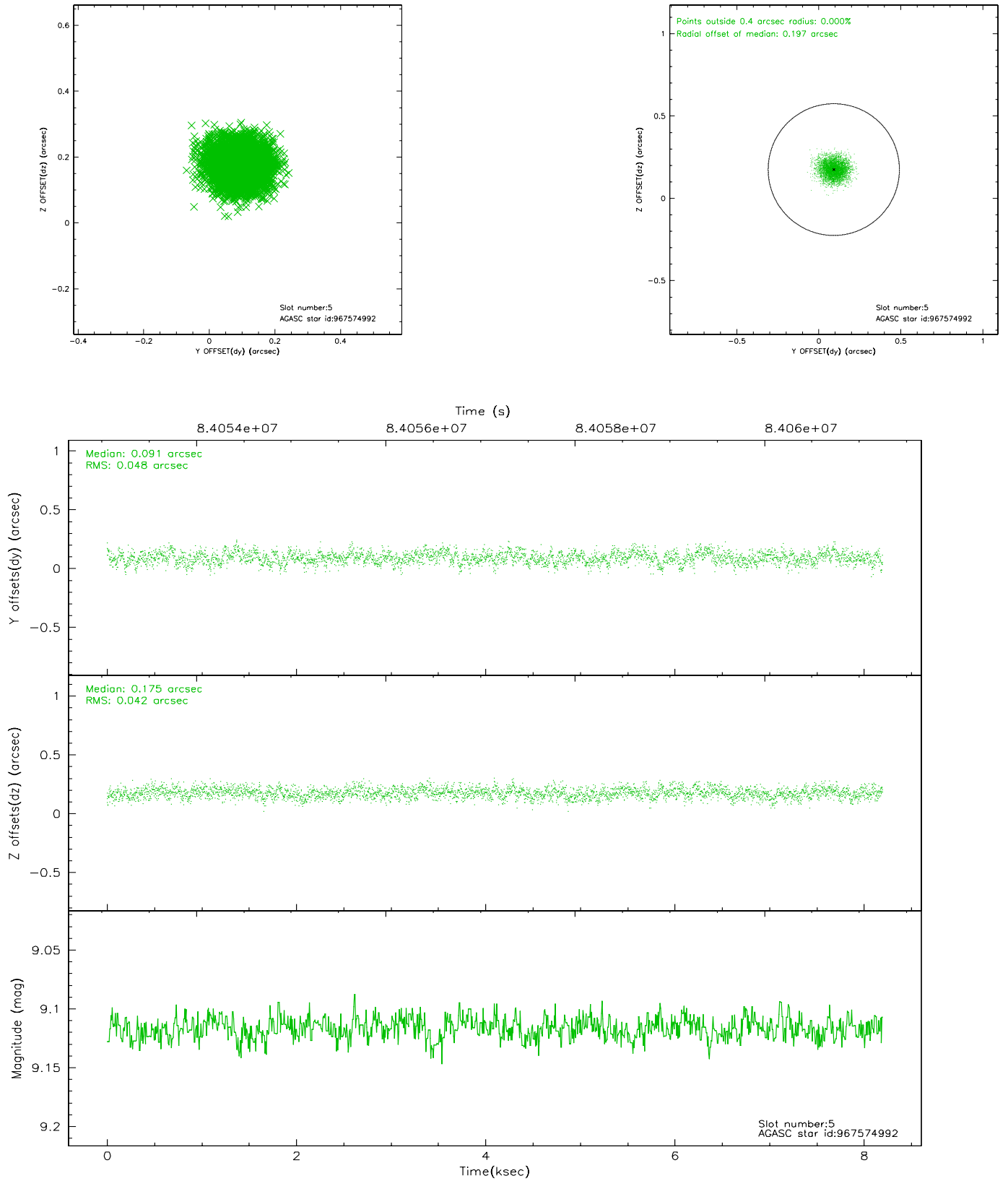
2.4.1 Slot 3



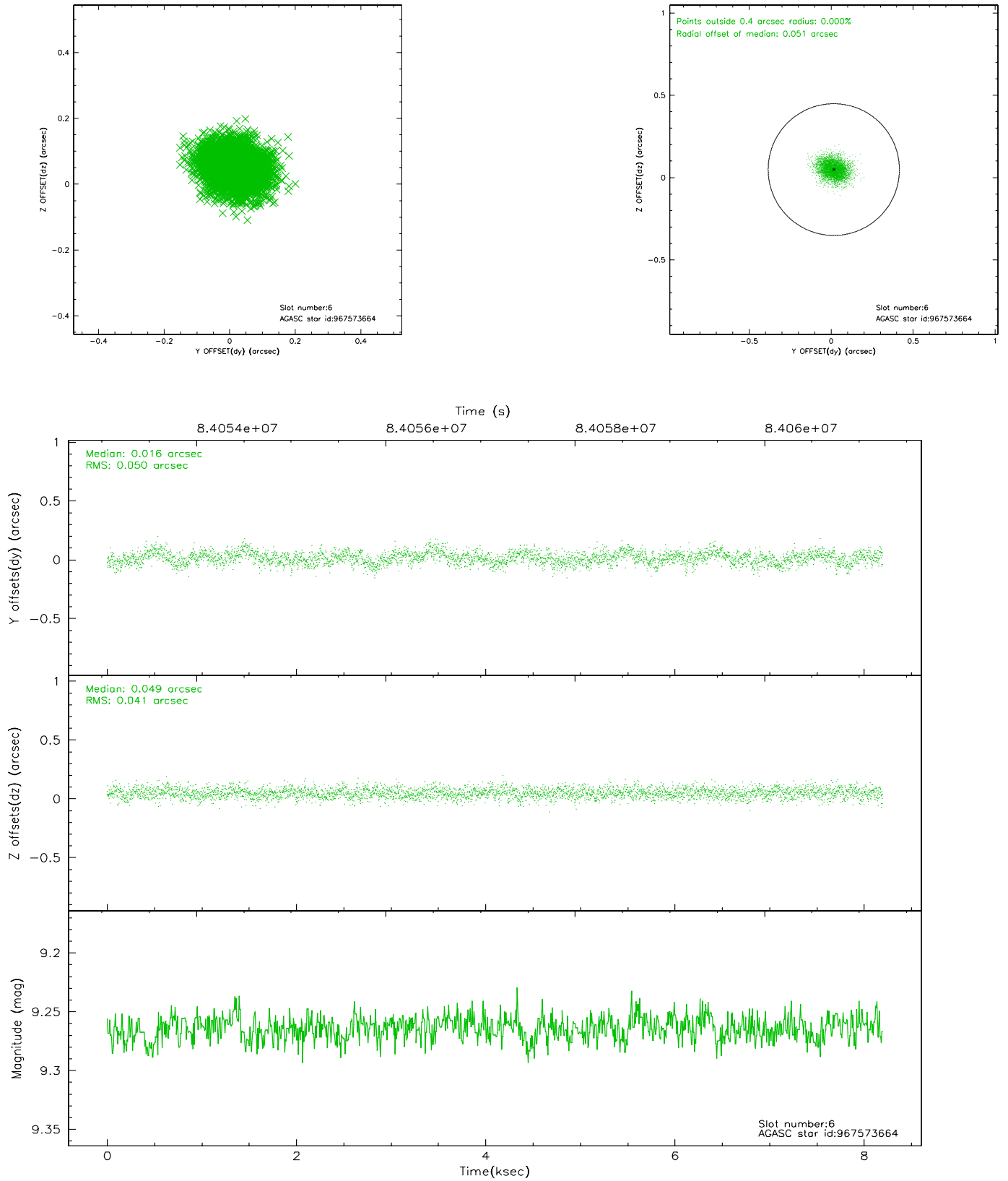
2.4.2 Slot 4



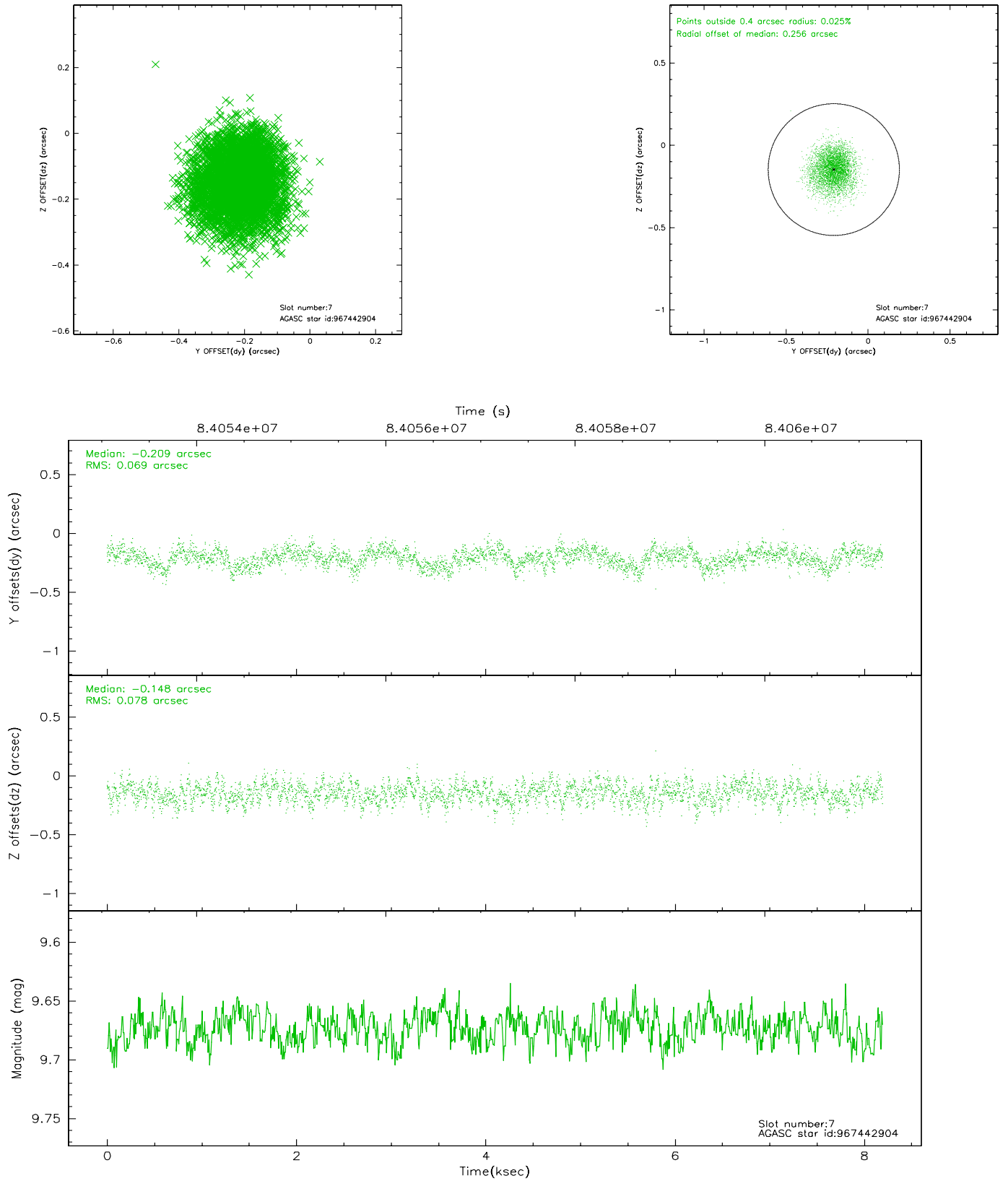
2.4.3 Slot 5



2.4.4 Slot 6

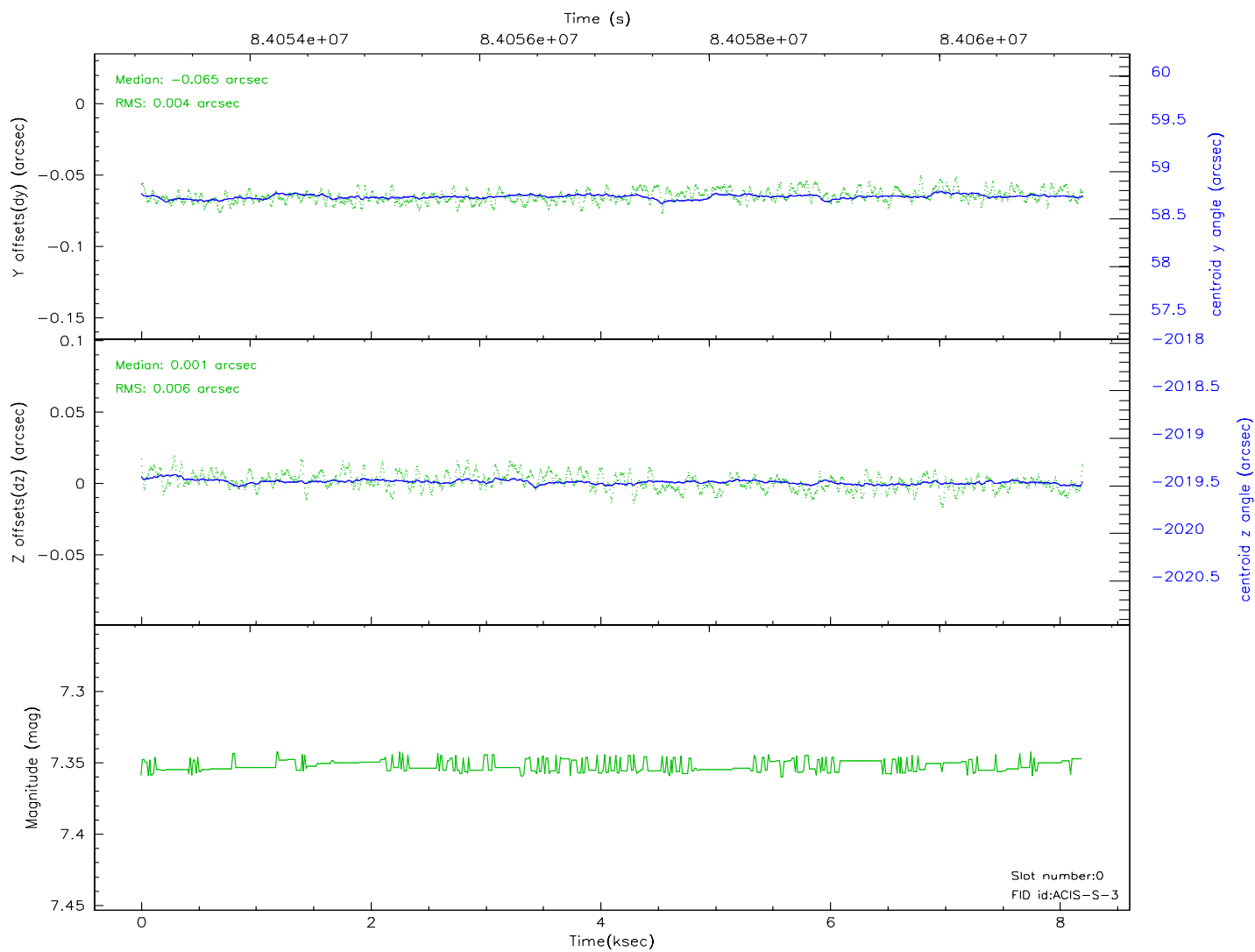
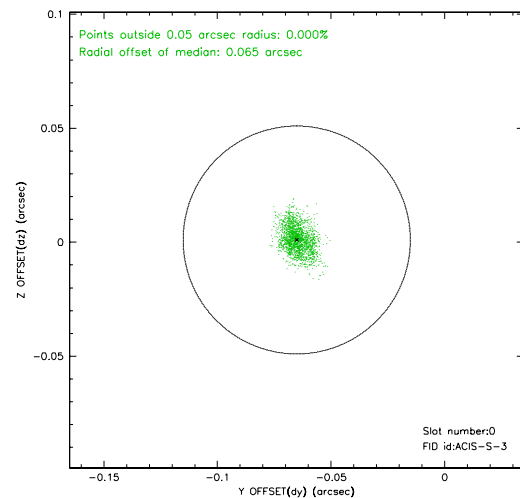
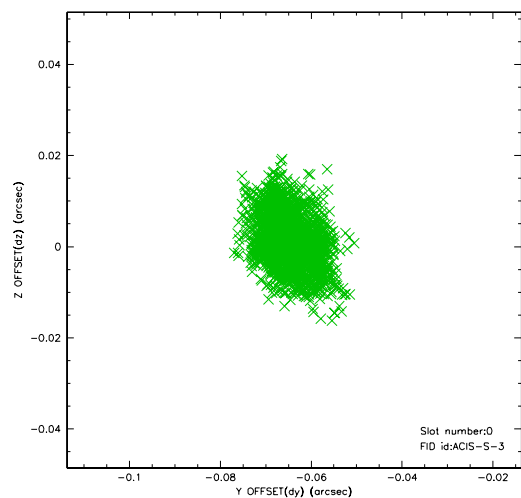


2.4.5 Slot 7

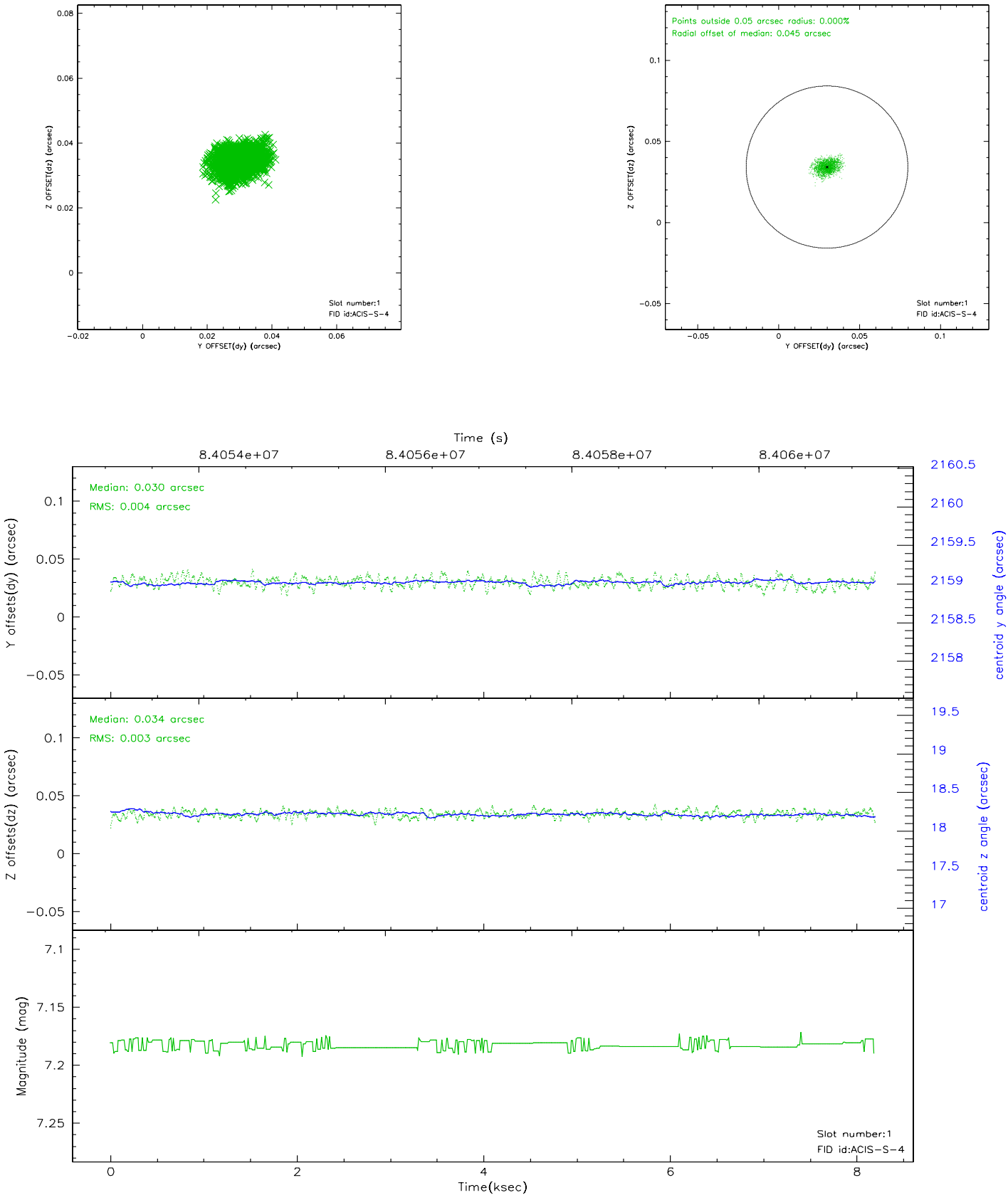


2.5 FID Slots

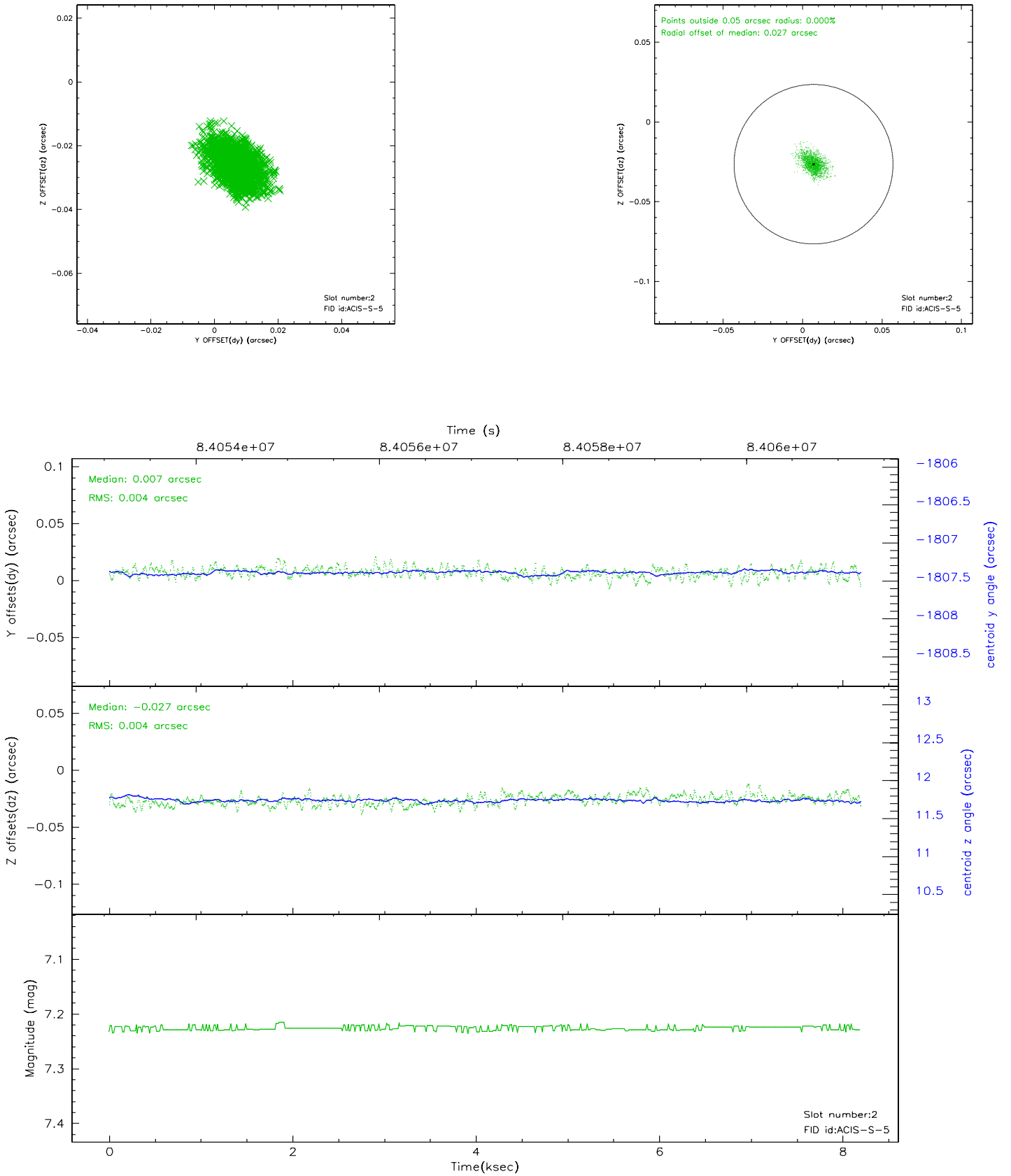
2.5.1 Slot 0



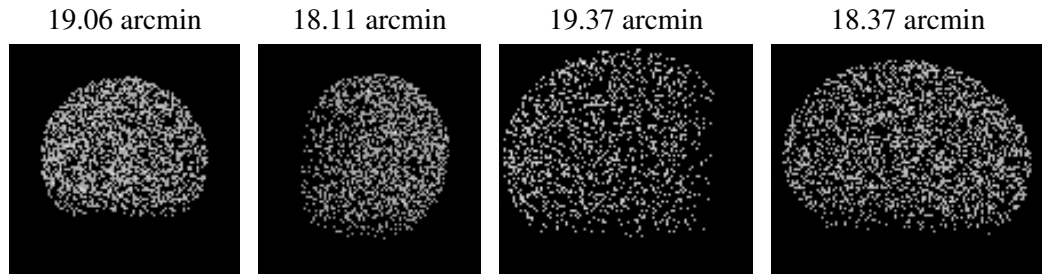
2.5.2 Slot 1



2.5.3 Slot 2



3 Point Sources



A Summary

A.1 Status

V&V Scientist	Jen Lauer
V&V Date (YYYY-MM-DD)	2007.06.06
V&V Edition	1
V&V Disposition and Status	OK
V&V Charge Time	6.803

A.2 Comments

Spike in count rate from about 10 counts per second to about 50 counts per second between 4 and 6 ksec into the observation. Most of this time period is not included in the good time interval, and therefore is not in the Level 2 data products.