

V&V Reference Report

L2 ASCDS Version : 7.6.10

Observation 655 - L2 Version 001
Chandra X-Ray Center

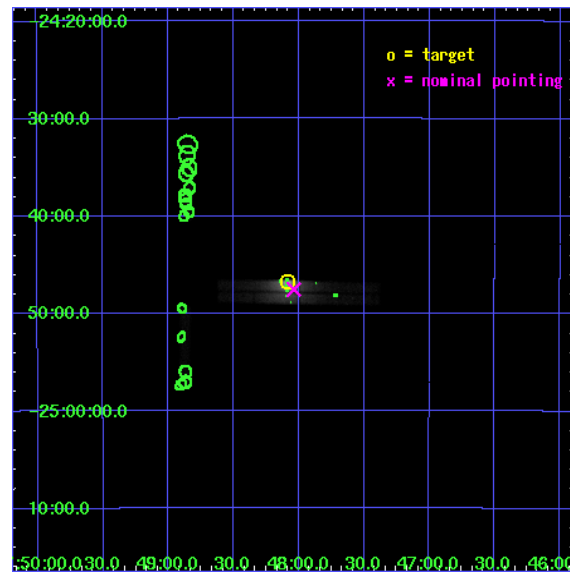
L2 Processing Date : May 31 2007

Contents

1	Front	2
2	OBI	3
2.1	OBI	3
2.1.1	Images	3
2.1.2	Bias	3
2.1.3	Parameters	4
2.1.4	Events	4
2.2	Compared Parameters	5
2.3	Aspect	6
2.4	Star Slots	9
2.4.1	Slot 3	9
2.4.2	Slot 4	10
2.4.3	Slot 5	11
2.4.4	Slot 6	12
2.4.5	Slot 7	13
2.5	FID Slots	14
2.5.1	Slot 0	14
2.5.2	Slot 1	15
2.5.3	Slot 2	16
3	Point Sources	17
A	Summary	18
A.1	Status	18
A.2	Comments	18

1 Front

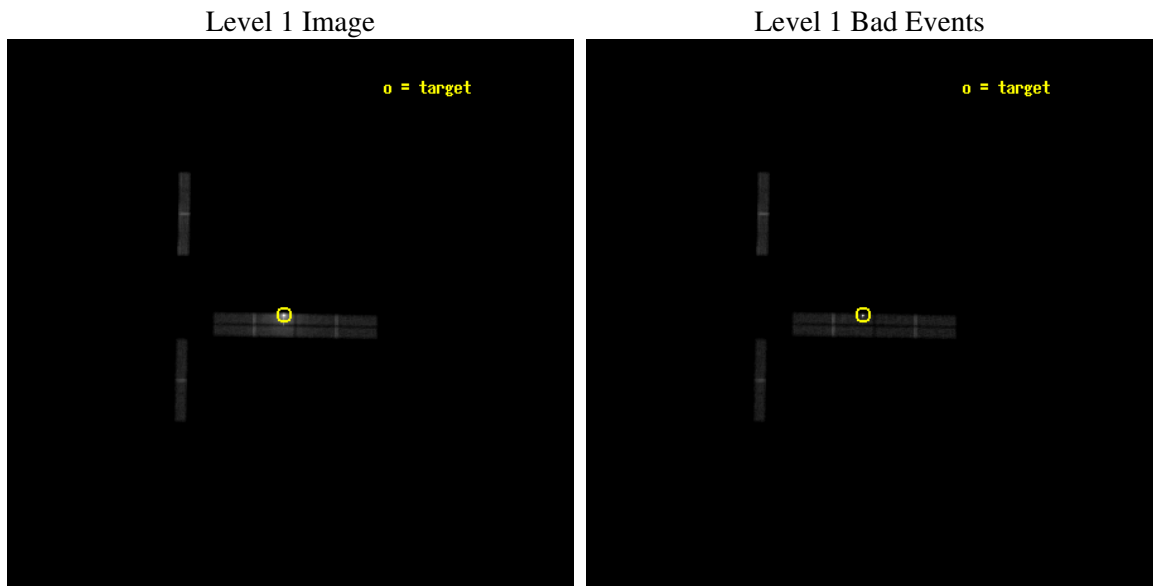
seq_num	300024
obs_id	655
title	X-RAYING COMPACT BINARIES IN THE EXTREME GLOBULAR CLUSTER, TERZAN 5
observer	Prof Jonathan Grindlay
object	TERZAN 5
dtcycle	0
cycle	P
ra_targ	267.020417
dec_targ	-24.779139
ra_nom	267.00935925702
dec_nom	-24.7921674139
roll_nom	271.07322878492
revision	3
ontime	44323.835754633
livetime	42160.97760357
ontime0	44322.994634852
ontime1	44322.994714633
ontime2	44323.835674867
ontime3	44323.835754633
ontime6	44323.835674867
ontime8	44323.835754633
l2events	225637



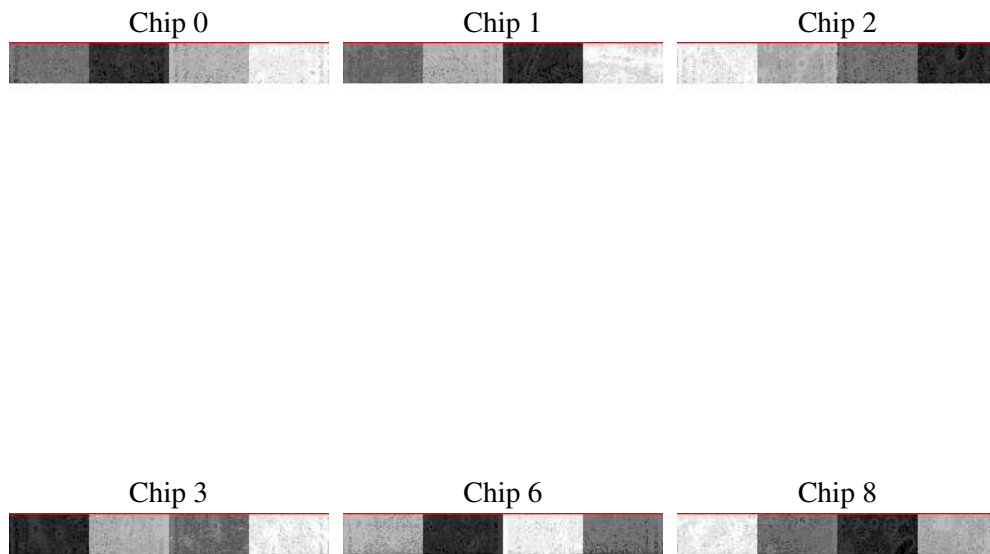
2 OBI

2.1 OBI

2.1.1 Images



2.1.2 Bias



2.1.3 Parameters

obi_num	0
ascdsver	7.6.10
caldsver	3.4.0
date	2007-05-31T21:44:49
revision	3

sched_exp_time	44000.000000
ontime	44323.835754633
ontime0	44322.994634852
ontime1	44322.994714633
ontime2	44323.835674867
ontime3	44323.835754633
ontime6	44323.835674867
ontime8	44323.835754633
l1events	536259

2.1.4 Events

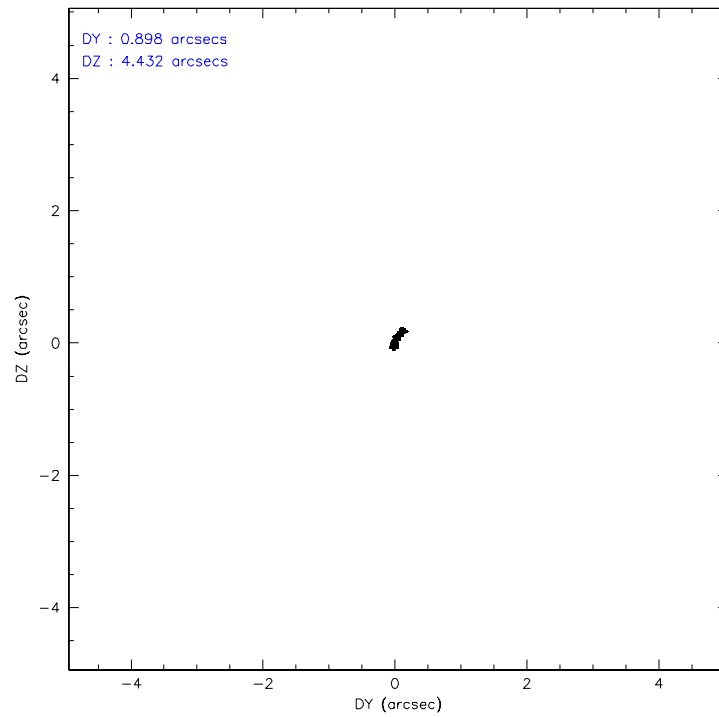
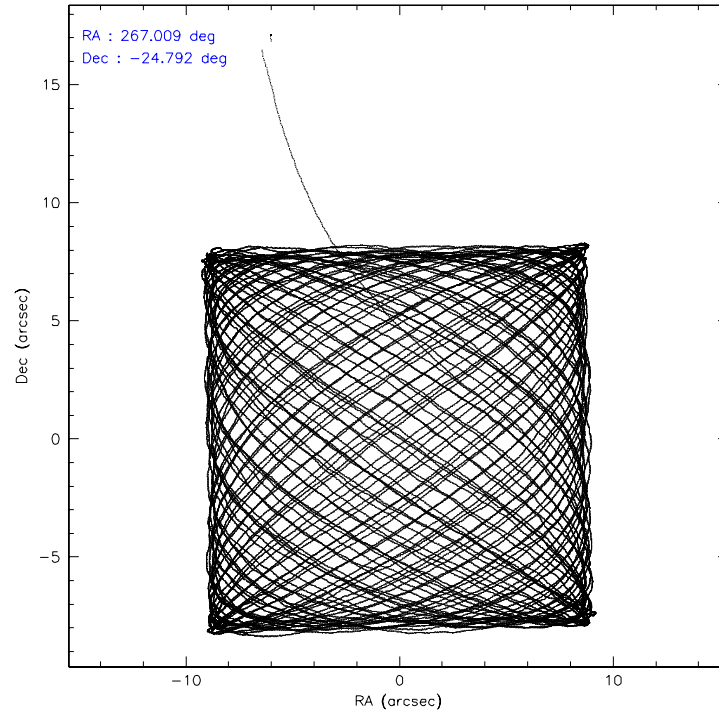
	ccd 0	ccd 1	ccd 2	ccd 3	ccd 6	ccd 8
level 1 events	49422	54211	69920	245670	44836	72200
rejected events	36765	38537	42741	76436	39634	60608
rejected %	74%	71%	61%	31%	88%	83%

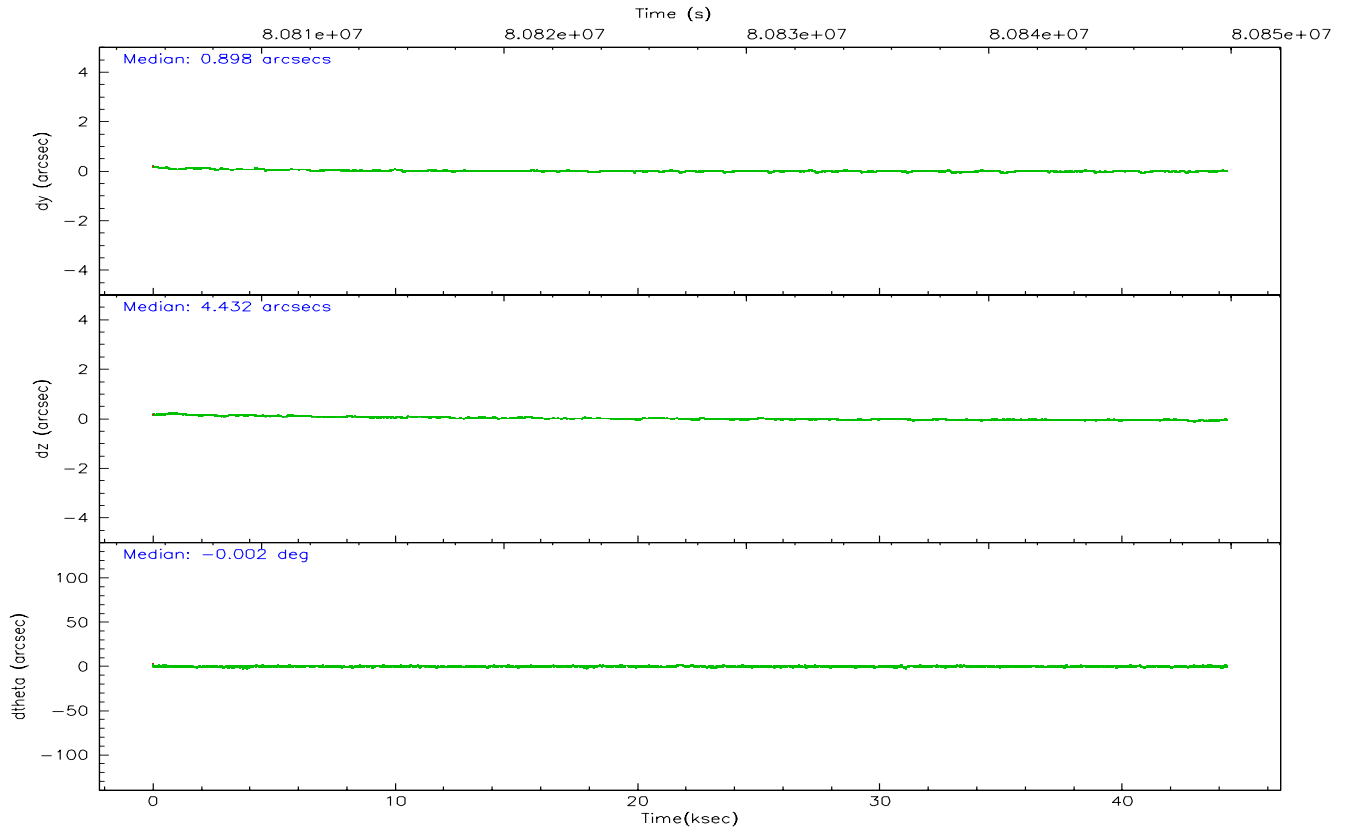
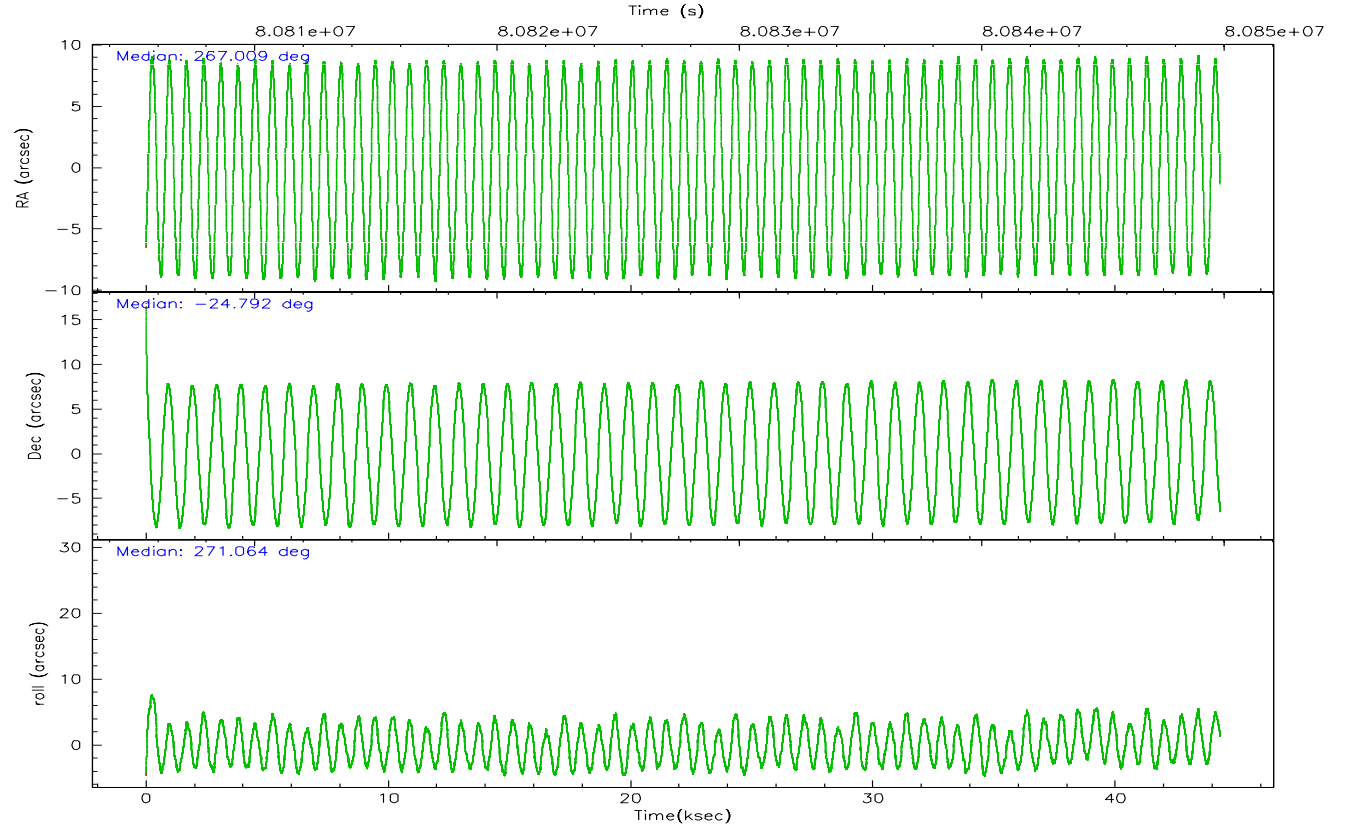
	ccd 0	ccd 1	ccd 2	ccd 3	ccd 6	ccd 8
grade 0 events	7691	9778	18483	109422	2023	3260
	15%	18%	26%	44%	4%	4%
grade 1 events	42	52	59	4744	35	52
	0%	0%	0%	1%	0%	0%
grade 2 events	1943	2325	3682	24801	835	2190
	3%	4%	5%	10%	1%	3%
grade 3 events	1023	1128	1568	8816	755	1361
	2%	2%	2%	3%	1%	1%
grade 4 events	940	1056	1633	9177	804	1274
	1%	1%	2%	3%	1%	1%
grade 5 events	1241	1312	1271	7361	1398	1999
	2%	2%	1%	2%	3%	2%
grade 6 events	1093	1416	1939	17444	800	3555
	2%	2%	2%	7%	1%	4%
grade 7 events	35449	37144	41285	63905	38186	58509
	71%	68%	59%	26%	85%	81%

2.2 Compared Parameters

Parameter	Planned	Actual	Parameter	Planned	Actual
Instrument	ACIS	ACIS	Obspar format version number	6	6
Detector	ACIS-012368	ACIS-012368	Obspar file type	PREDICTED	ACTUAL
Grating	NONE	NONE	Obspar update status	NONE	UPDATED
Data mode	FAINT	FAINT	Number of optional ACIS chips dropped	0	0
Observation mode	POINTING	POINTING	On-chip summing requested	N	N
Pointing RA	266.993798	267.0093592570218	Subarray requested	CUSTOM	1/8
Pointing Dec	-24.768505	-24.79216741389954	Subarray start row	895	895
Pointing Roll	270.858019	271.0732287849174	Subarray row count	128	128
SIM focus pos (mm)	-0.782348	-0.7809083437167272	Alternating exposures requested	N	N
SIM defocus (mm)	0	0.001439871863259334	Primary exposure time	0.800000	0.8
SIM translation stage pos (mm)	-233.592463	-233.5874344608287			
SIM translation stage offset (mm)	0	-0.005018542100998502			
Observation start time	80805844.184000	80804815.33898			
Observation start date	2000-07-24T06:03:00	2000-07-24T05:46:55			
Observation end time	80849844.184000	80850166.465666			
Observation end date	2000-07-24T18:16:20	2000-07-24T18:22:46			
Read mode	TIMED	TIMED			

2.3 Aspect



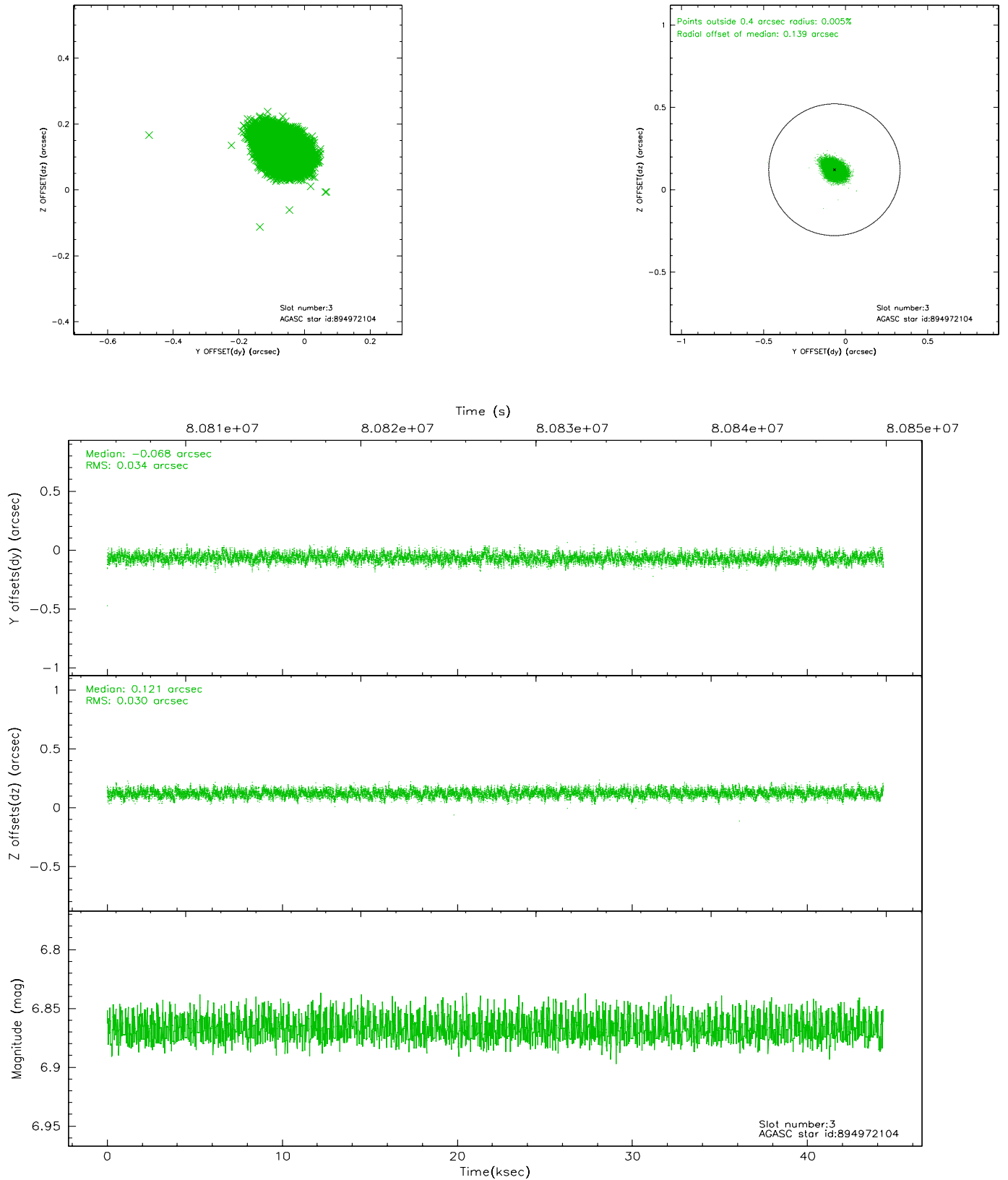


Slot Statistics

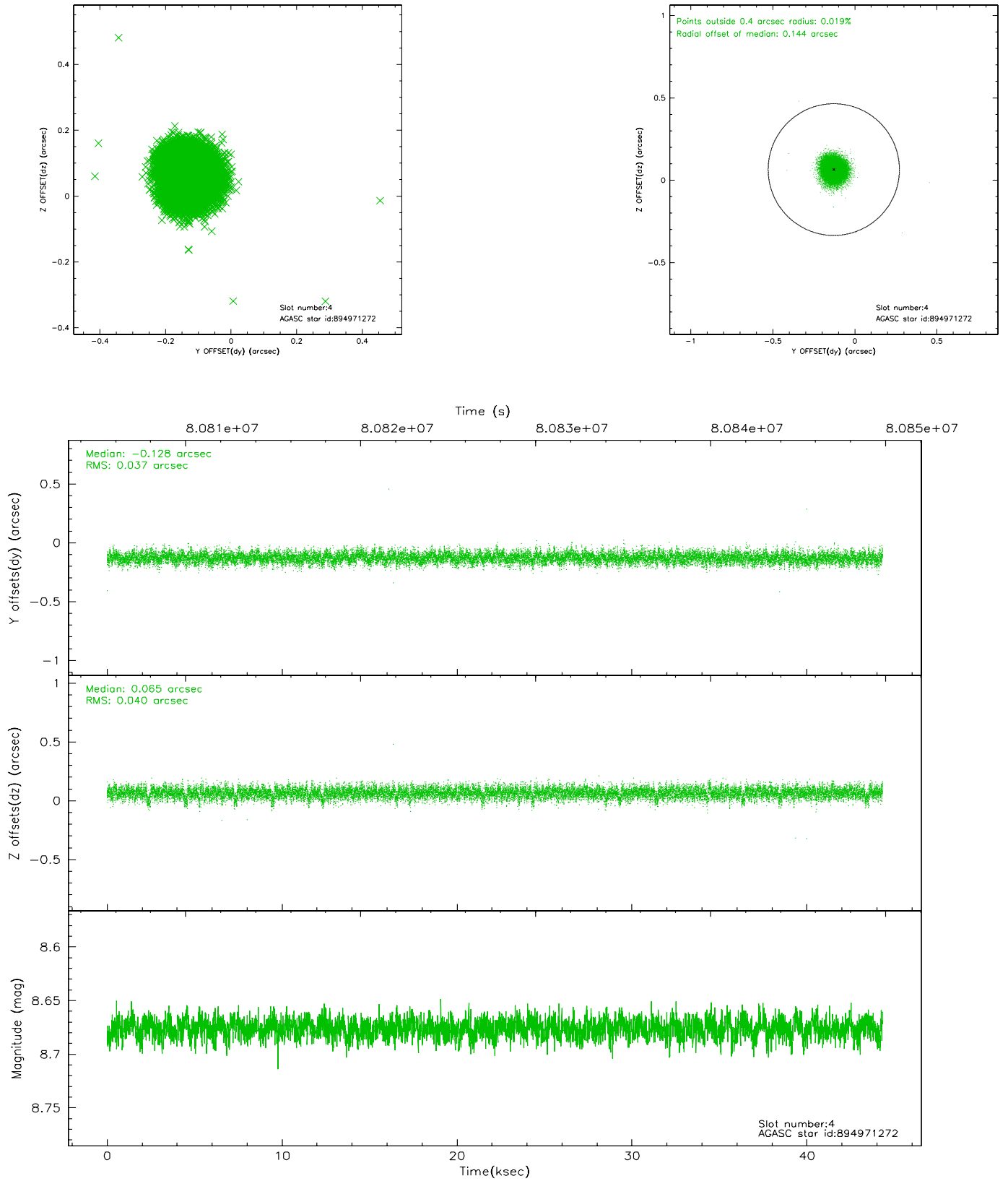
slot	status	id	mag	n_pts	med_dy	med_dz	dr1	dr2	ra	dec	mean_y	mean_z
0	FID	ACIS-I-2	7.15	10812	-0.022	-0.005	0.009	0.016	0.000000	0.000000	-755.25	-834.14
1	FID	ACIS-I-4	7.19	10812	-0.069	0.023	0.006	0.010	0.000000	0.000000	2158.76	1072.06
2	FID	ACIS-I-5	7.23	10811	-0.010	0.050	0.009	0.015	0.000000	0.000000	-1809.07	1069.93
3	GUIDE	894972104	6.87	21623	-0.068	0.121	0.048	0.078	267.489380	-24.207054	-1993.05	1657.42
4	GUIDE	894971272	8.68	21614	-0.128	0.065	0.057	0.094	267.055800	-24.327060	-1585.18	227.37
5	GUIDE	895489248	8.83	21616	0.017	-0.049	0.060	0.100	266.526793	-24.872603	355.68	-1530.43
6	GUIDE	895484264	8.28	21618	-0.012	-0.031	0.071	0.114	267.582371	-25.263146	1814.11	1889.83
7	GUIDE	895489704	8.80	21609	0.196	-0.104	0.076	0.125	266.328076	-25.361339	2108.60	-2196.89

2.4 Star Slots

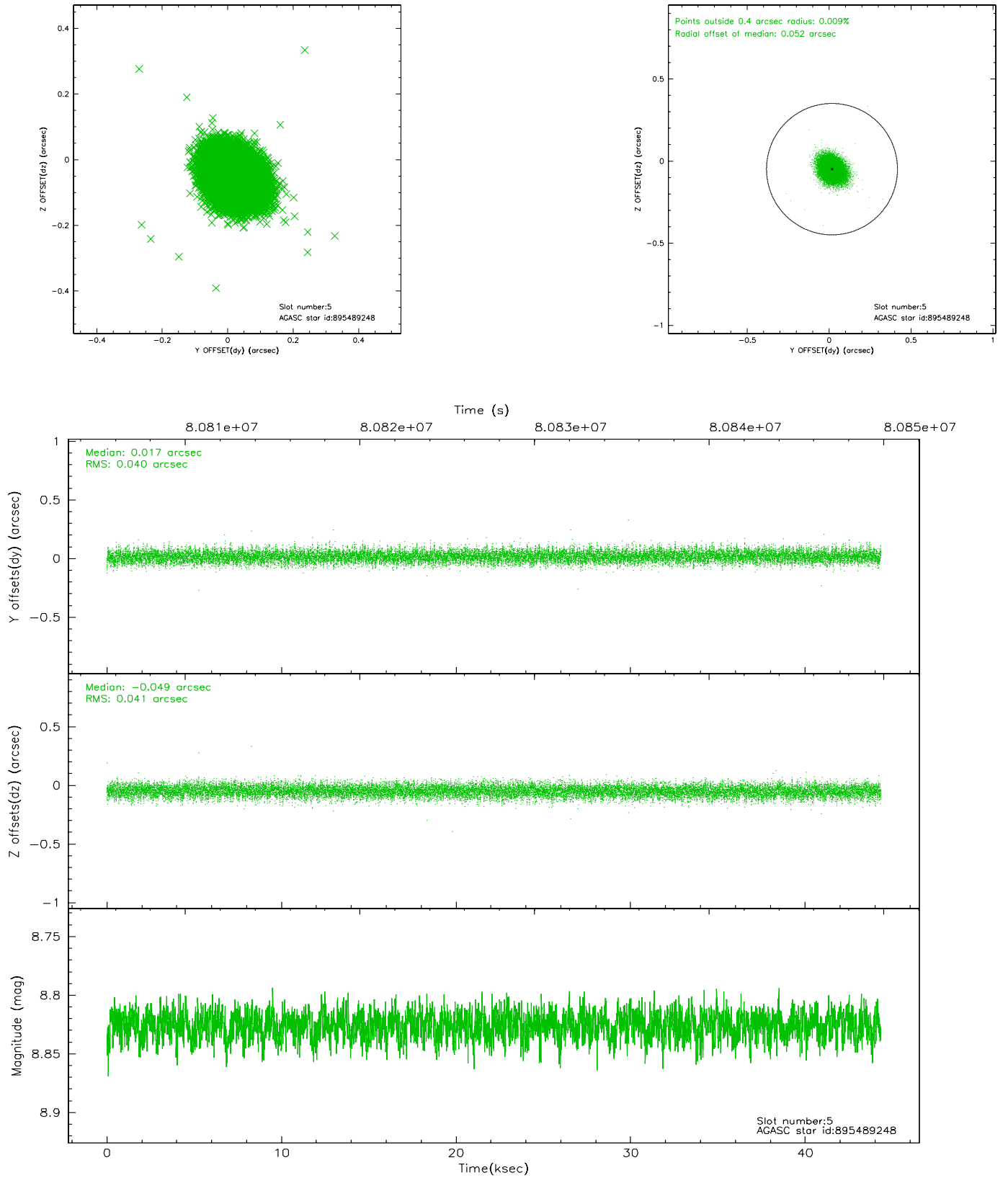
2.4.1 Slot 3



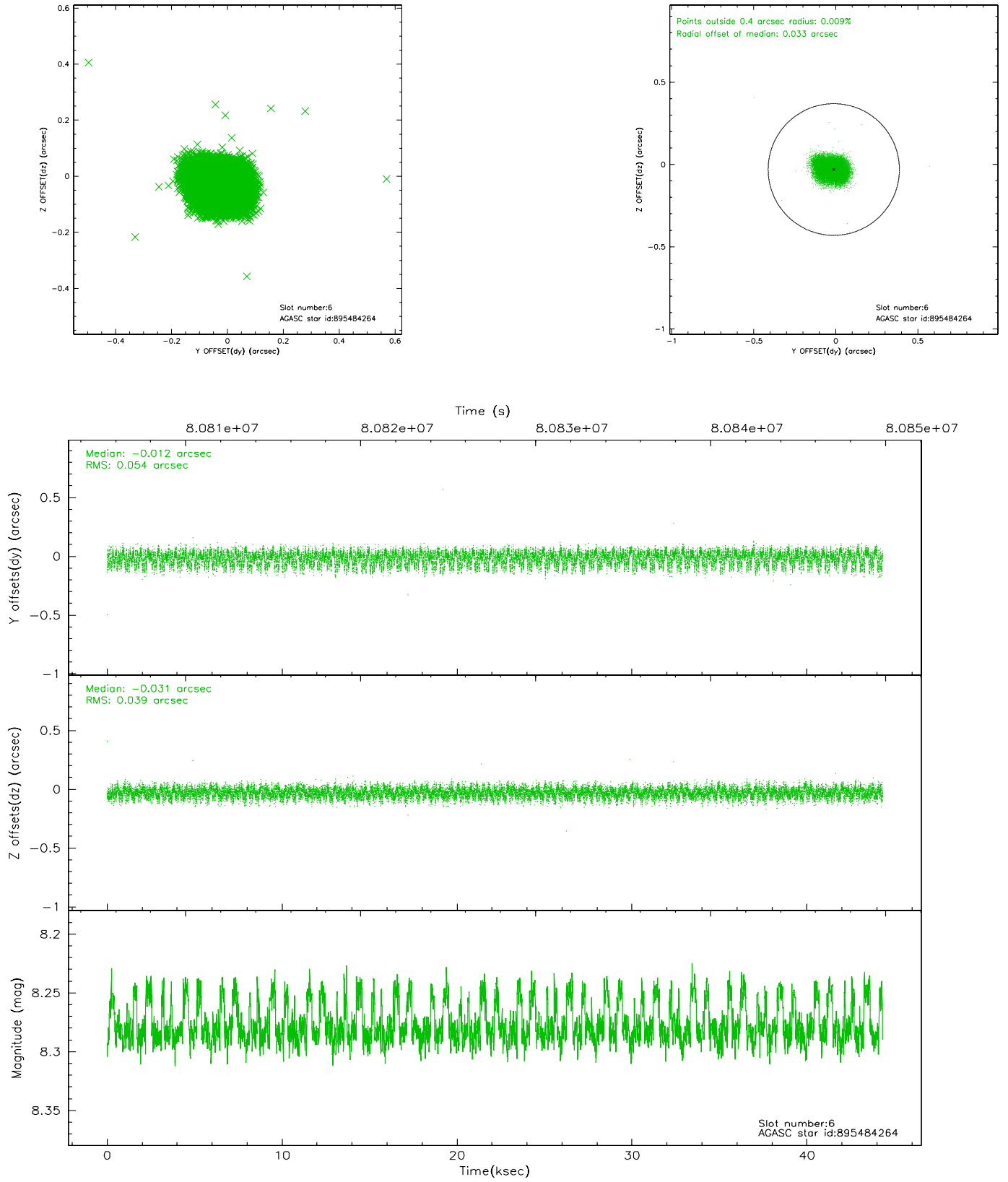
2.4.2 Slot 4



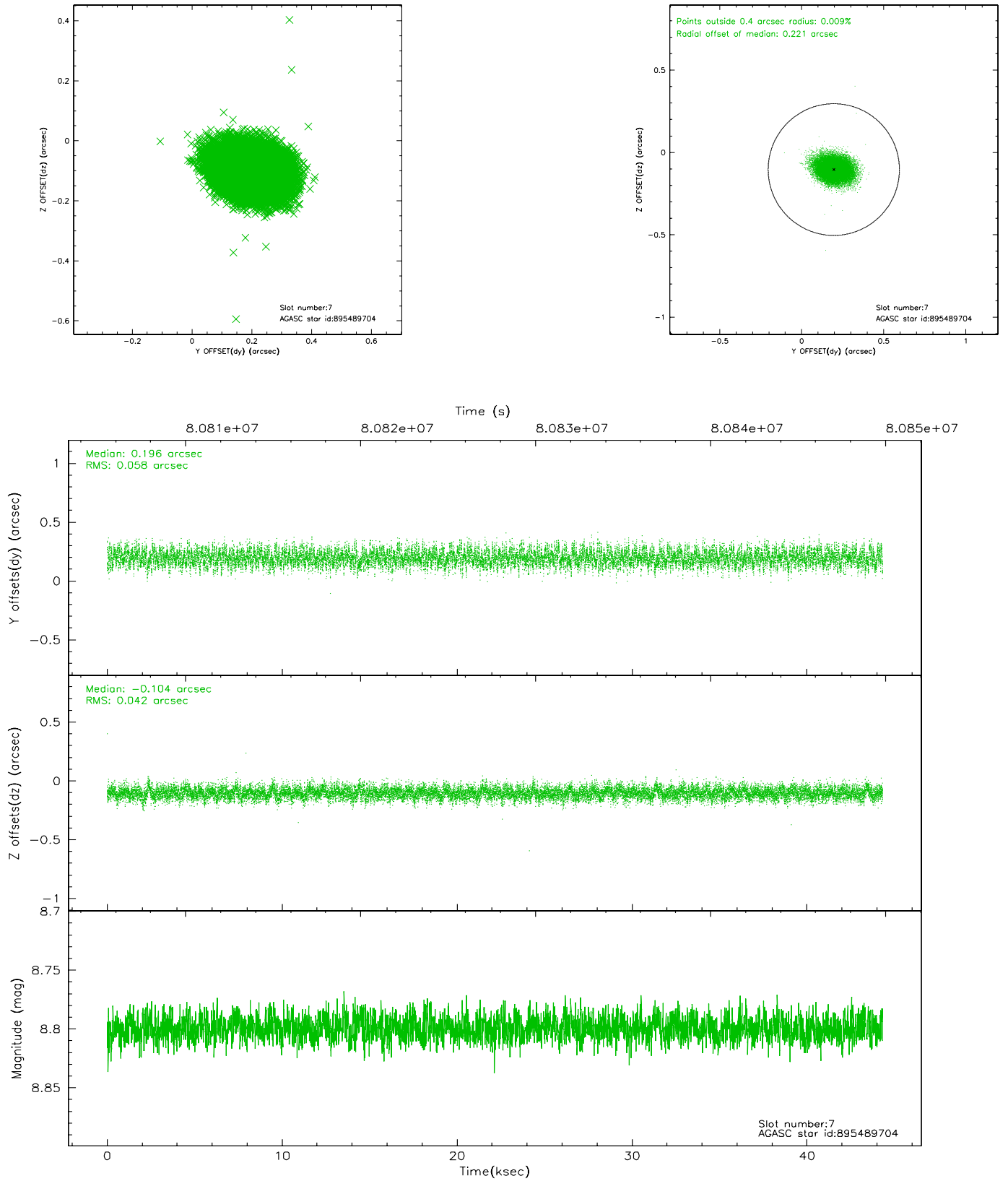
2.4.3 Slot 5



2.4.4 Slot 6

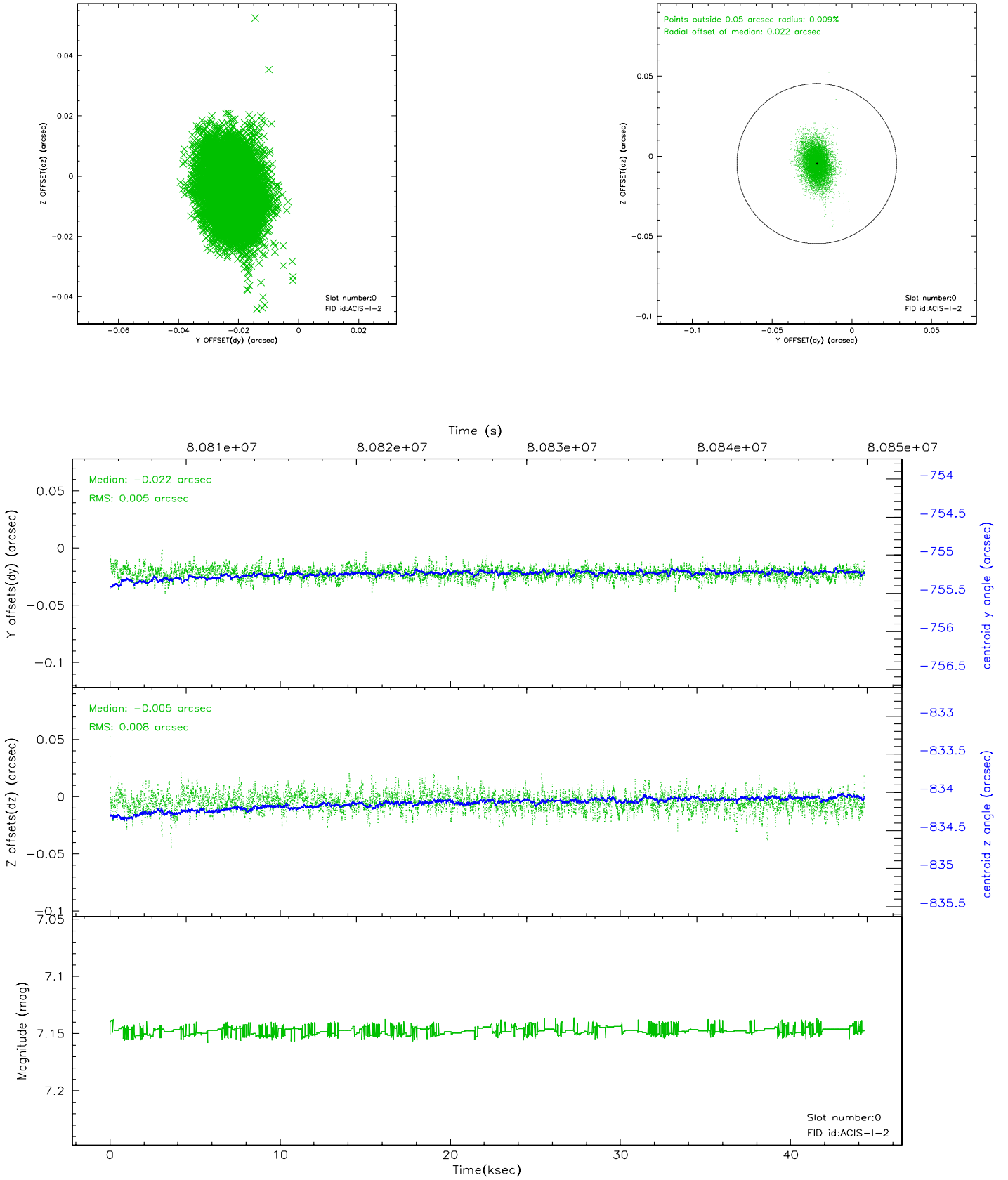


2.4.5 Slot 7

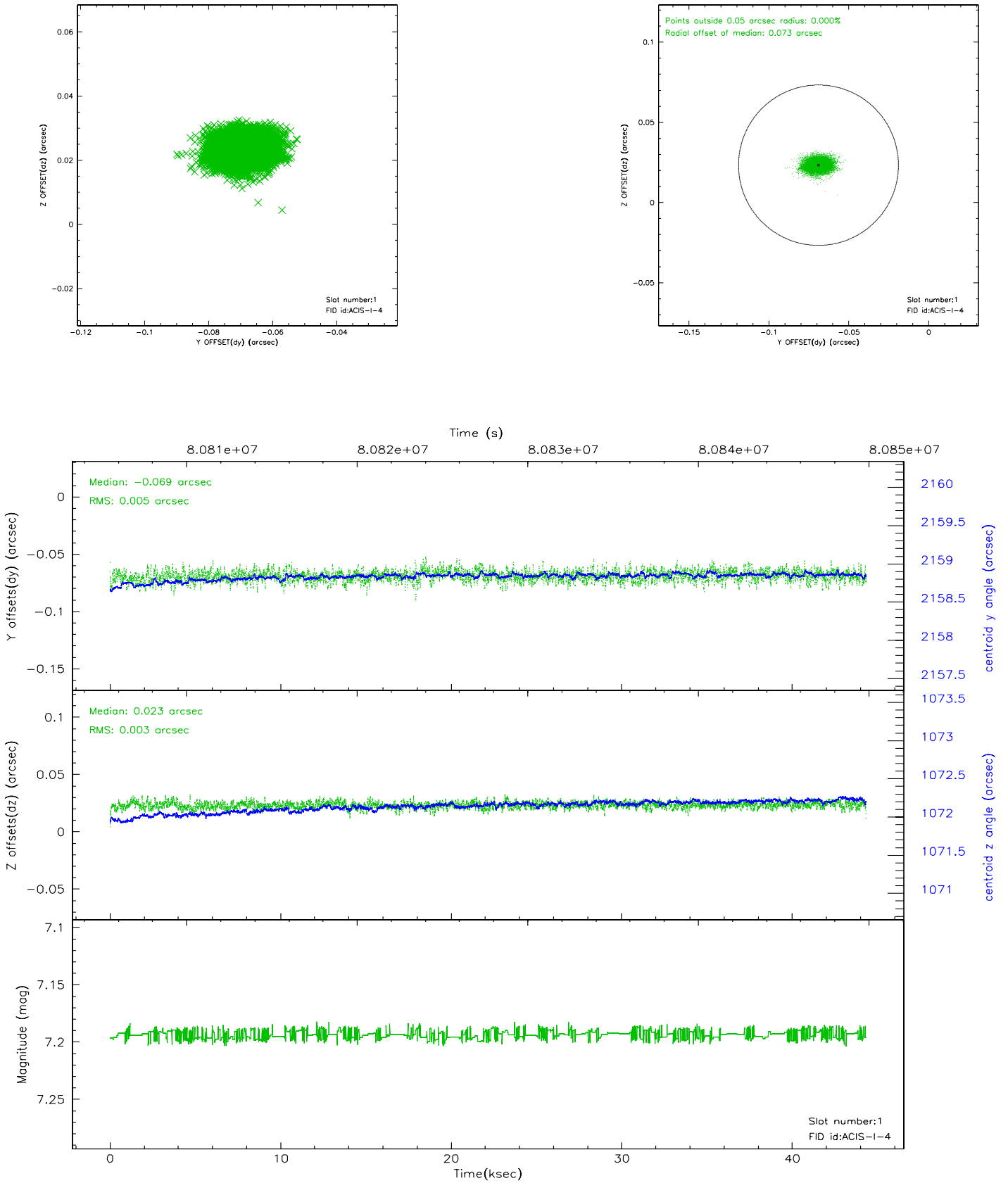


2.5 FID Slots

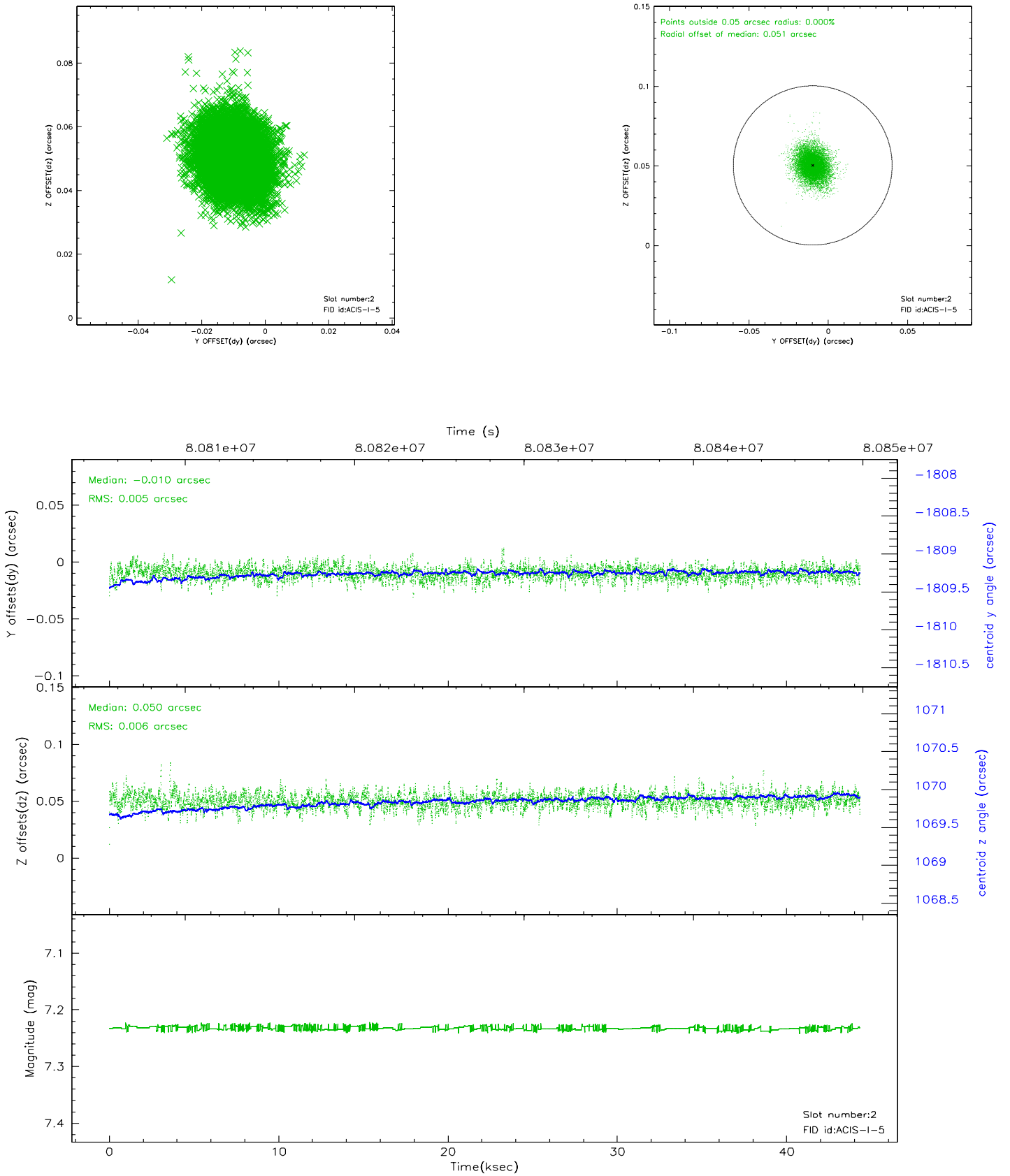
2.5.1 Slot 0



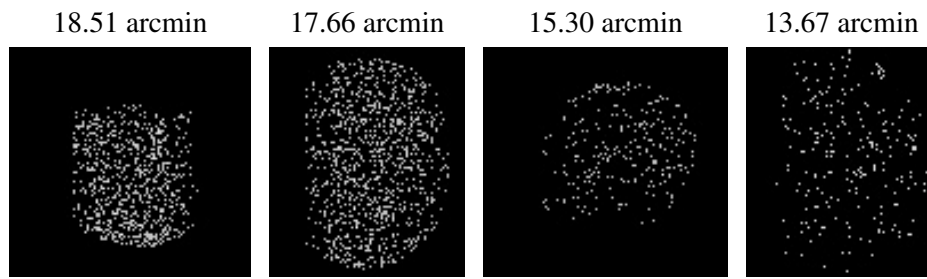
2.5.2 Slot 1



2.5.3 Slot 2



3 Point Sources



A Summary

A.1 Status

V&V Scientist	Beth Sundheim
V&V Date (YYYY-MM-DD)	2007.06.01
V&V Edition	1
V&V Disposition and Status	OK
V&V Charge Time	44.324

A.2 Comments