

V&V Reference Report

L2 ASCDS Version : 7.6.10

Observation 2308 - L2 Version 001
Chandra X-Ray Center

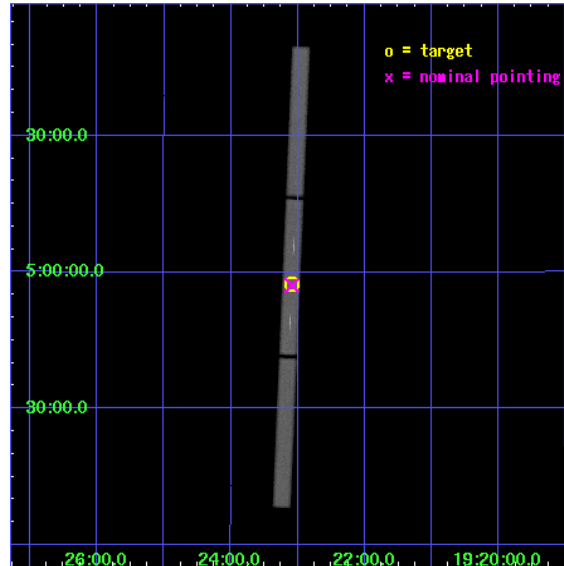
L2 Processing Date : Jun 9 2007

Contents

1	Front	2
2	OBI	3
2.1	OBI	3
2.1.1	Images	3
2.1.2	Parameters	4
2.1.3	Events	4
2.2	Compared Parameters	5
2.3	Aspect	6
2.4	Star Slots	9
2.4.1	Slot 3	9
2.4.2	Slot 4	10
2.4.3	Slot 5	11
2.4.4	Slot 6	12
2.4.5	Slot 7	13
2.5	FID Slots	14
2.5.1	Slot 0	14
2.5.2	Slot 1	15
2.5.3	Slot 2	16
3	Gratings	17
3.1	LETG Arm	17
A	Summary	19
A.1	Status	19
A.2	Comments	19

1 Front

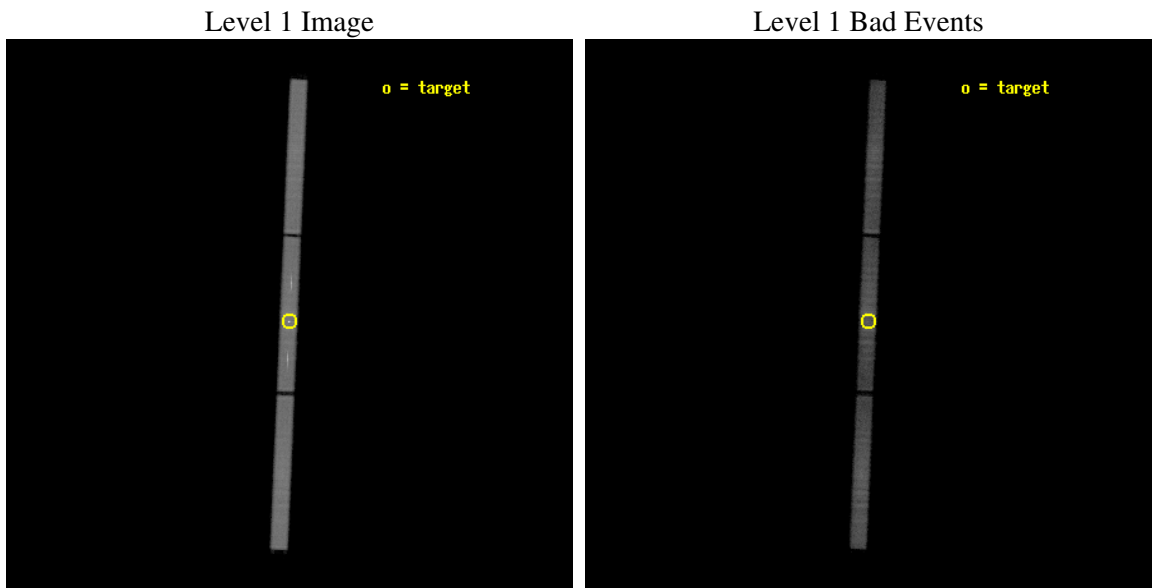
seq_num	300034
obs_id	2308
title	MULTIWAVELENGTH TOO OBSERVATIONS OF BRIGHT NOVAE IN OUTBURST
observer	Professor Sumner Starrfield
object	V1494 Aql
ra_targ	290.772
dec_targ	4.956
ra_nom	290.77213509105
dec_nom	4.9513373822467
roll_nom	272.38632408841
revision	4
ontime	8150.0315561742
livetime	8107.9414688039
l2events	297825



2 OBI

2.1 OBI

2.1.1 Images



2.1.2 Parameters

obi_num	0
ascdsver	7.6.10
caldbver	3.4.0
date	2007-06-09T13:26:52
revision	4

sched_exp_time	8000.000000
ontime	8150.0315571725
l1events	564466

2.1.3 Events

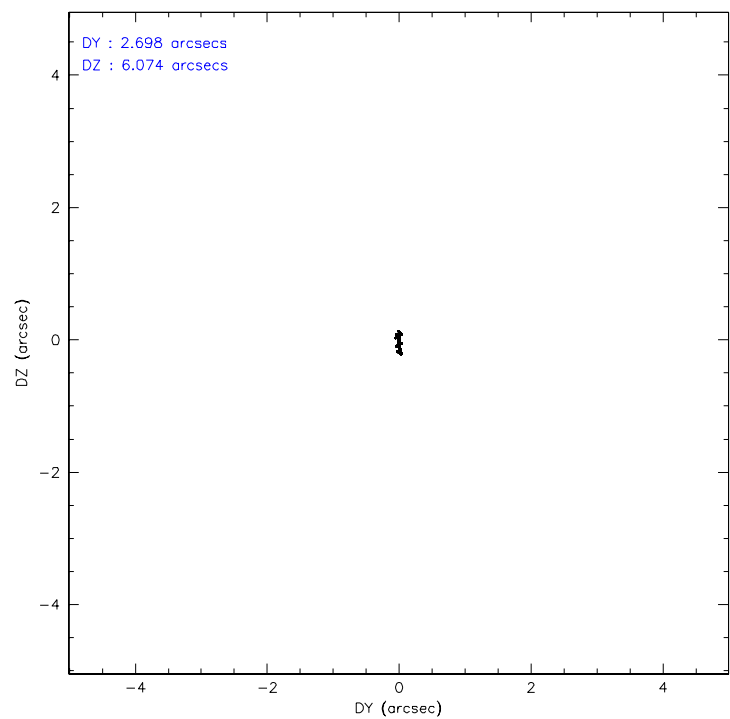
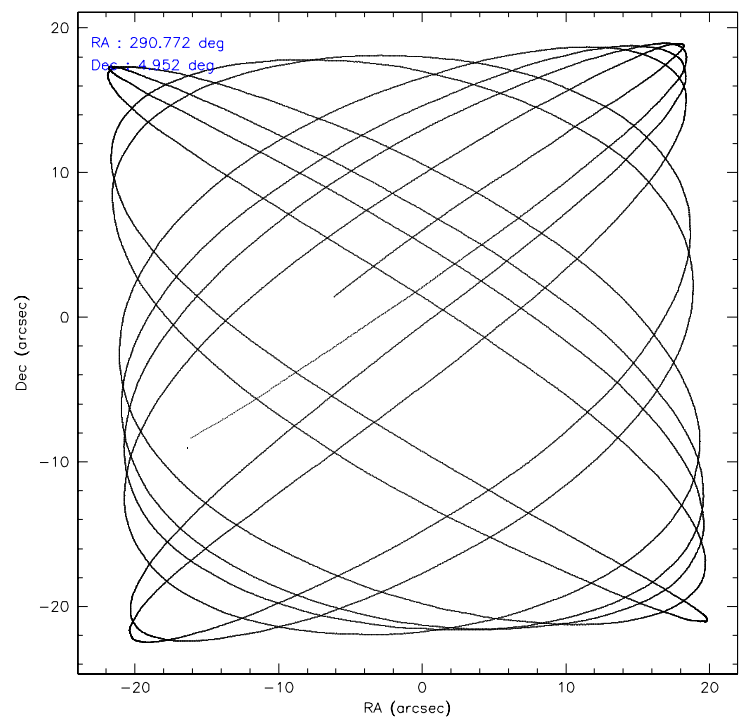
Level 1 Events

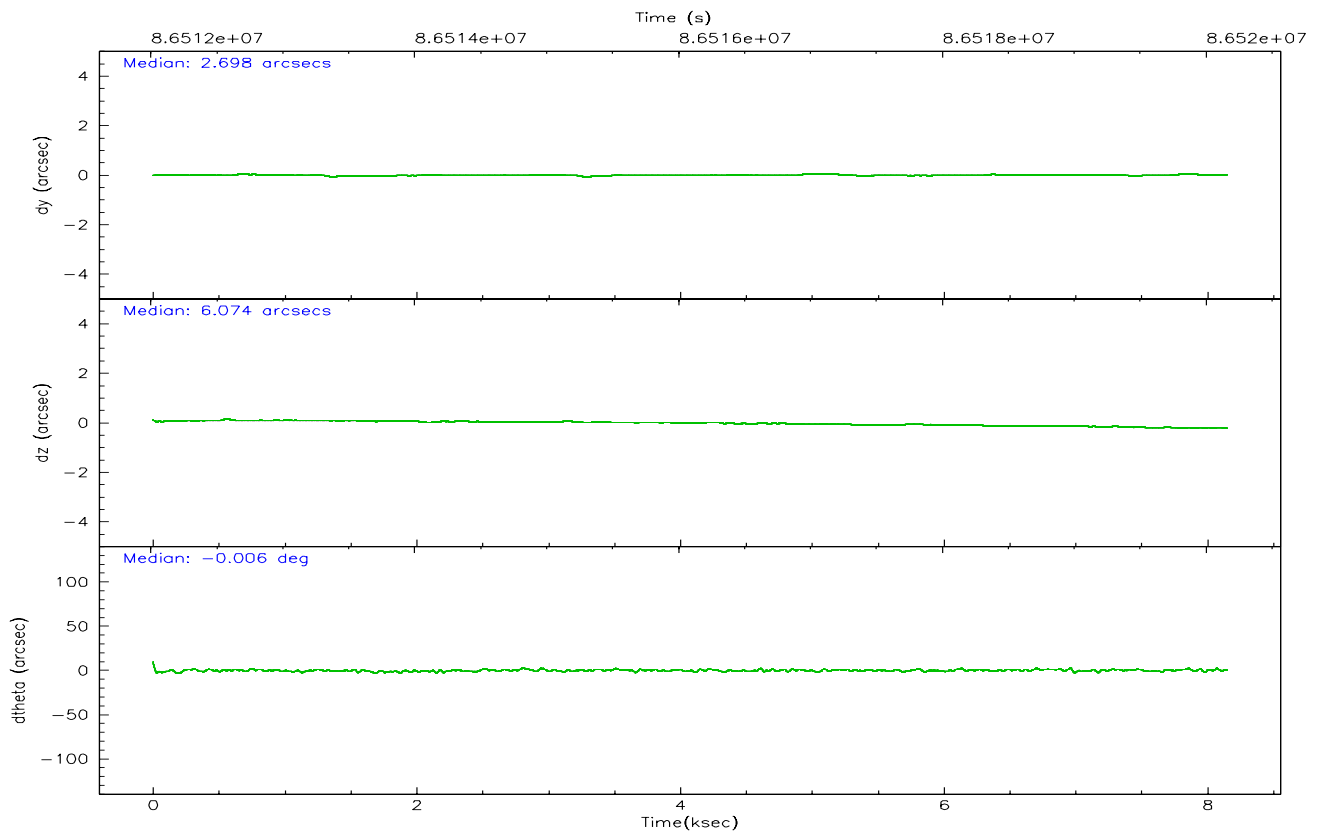
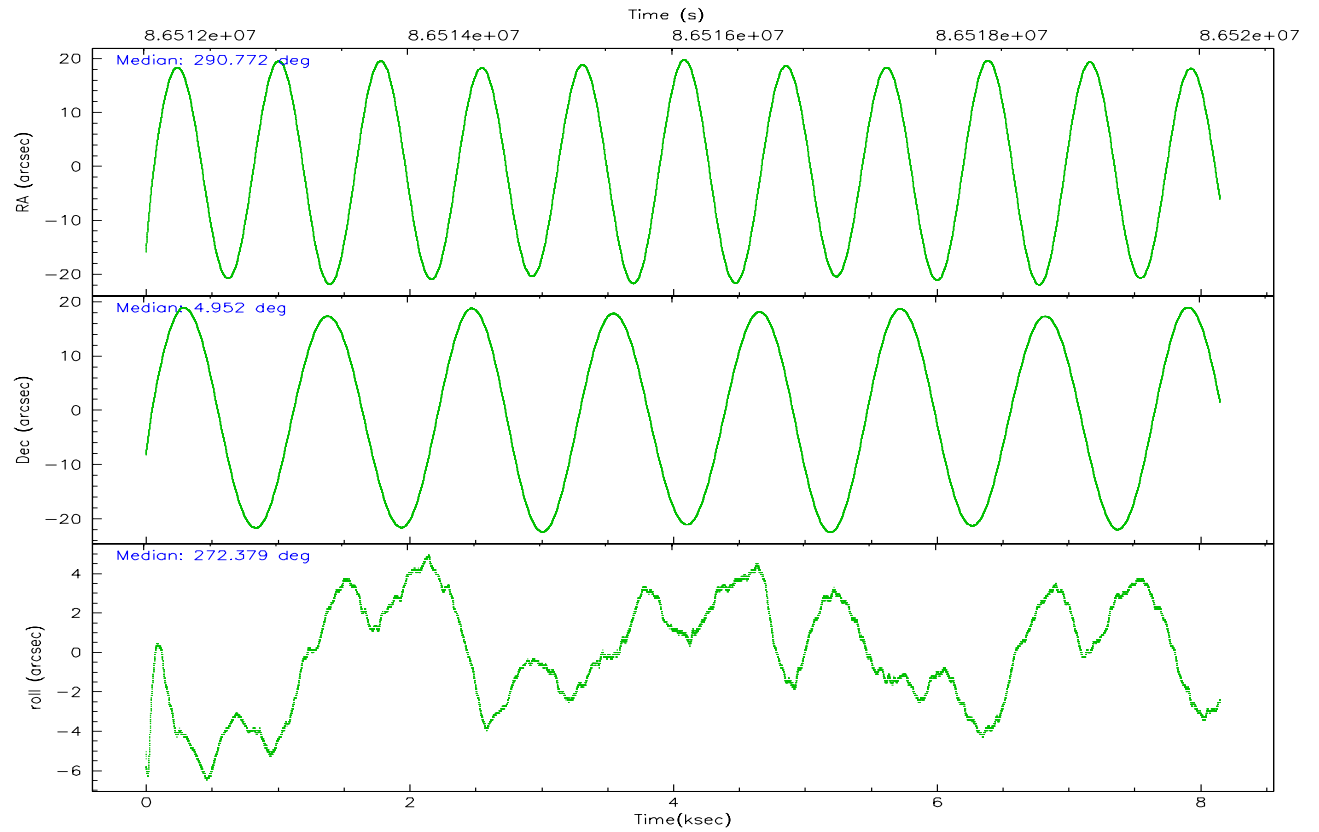
	segment 1	segment 2	segment 3
level 1 events	184864	193133	186469
rejected events	71196	73374	79946
rejected %	38%	37%	42%

2.2 Compared Parameters

Parameter	Planned	Actual	Parameter	Planned	Actual
Instrument	HRC	HRC	Obspar format version number	6	6
Detector	HRC-S	HRC-S	Obspar file type	PREDICTED	ACTUAL
Grating	LETG	LETG	Obspar update status	NONE	UPDATED
Data mode	OBSERVING	OBSERVING			
Observation mode	POINTING	POINTING			
Pointing RA	290.755503	290.7721350910548			
Pointing Dec	4.974681	4.951337382246664			
Pointing Roll	272.320424	272.3863240884069			
SIM focus pos (mm)	-1.429586	-1.428180813131781			
SIM defocus (mm)	0.1037507710433287	0.1051558262725154			
SIM translation stage pos (mm)	250.455976	250.466033080201			
SIM translation stage offset (mm)	0	-0.01005468664627074			
Observation start time	86512164.184000	86511073.577727			
Observation start date	2000-09-28T07:08:20	2000-09-28T06:51:13			
Observation end time	86520164.184000	86521016.590602			
Observation end date	2000-09-28T09:21:40	2000-09-28T09:36:56			

2.3 Aspect



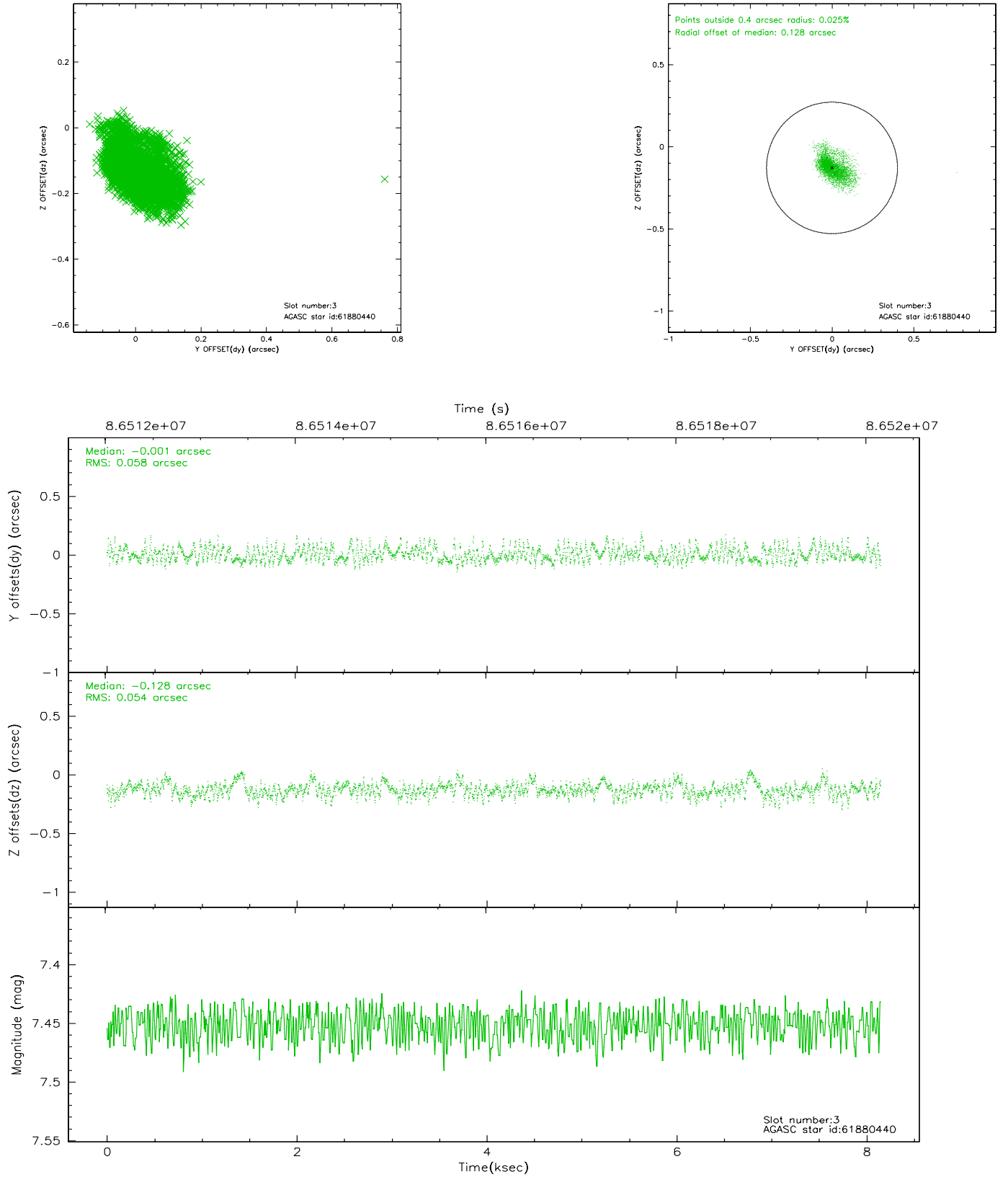


Slot Statistics

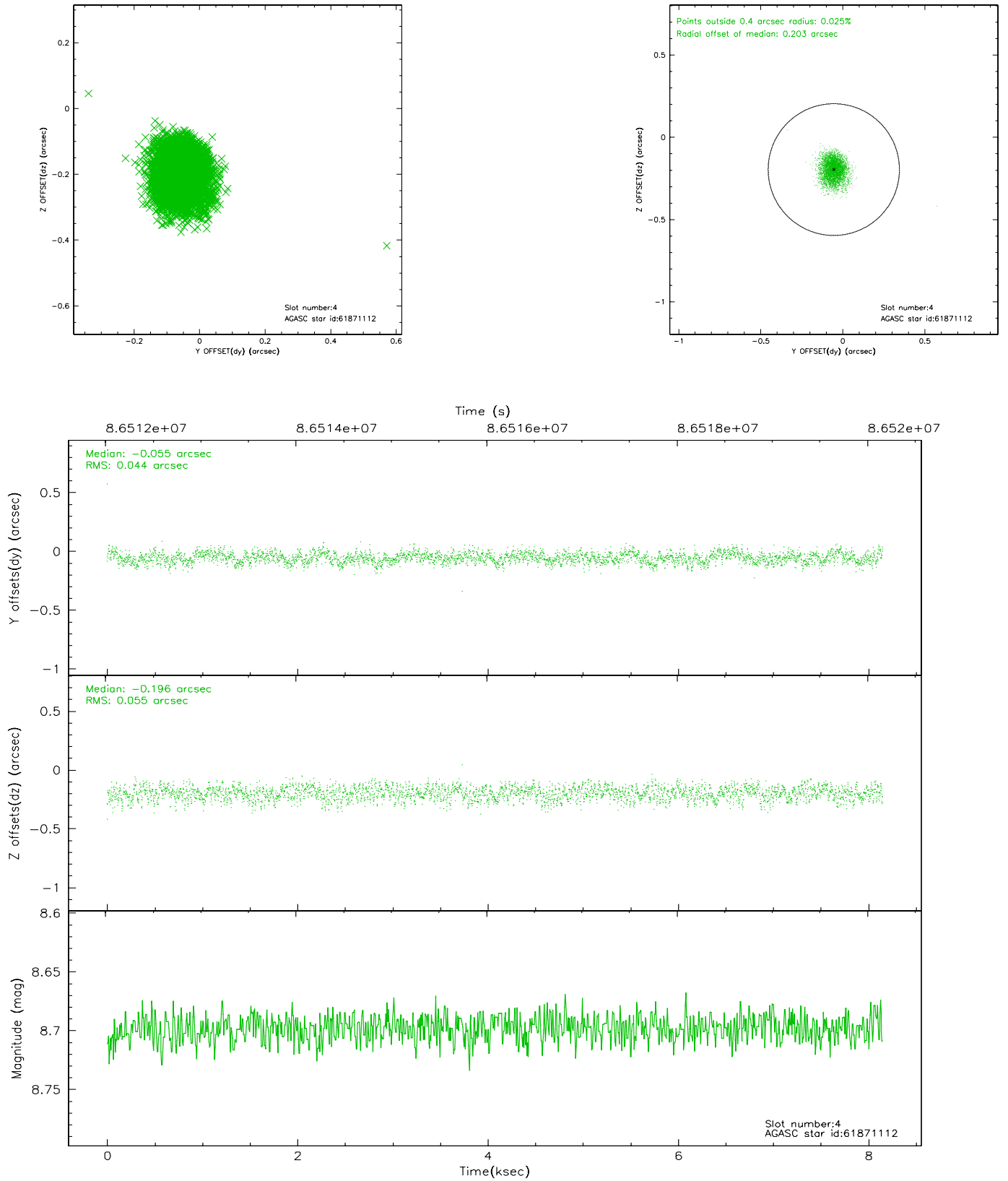
slot	status	id	mag	n_pts	med_dy	med_dz	dr1	dr2	ra	dec	mean_y	mean_z
0	FID	HRC-S-1	7.00	1988	0.094	-0.145	0.009	0.014	0.000000	0.000000	-1156.75	-454.65
1	FID	HRC-S-3	7.02	1988	0.153	-0.067	0.010	0.017	0.000000	0.000000	-1160.04	574.73
2	FID	HRC-S-4	6.96	1988	0.142	-0.085	0.005	0.010	0.000000	0.000000	1240.93	577.90
3	GUIDE	61880440	7.45	3977	-0.001	-0.128	0.082	0.144	290.081203	4.777895	610.55	-2445.66
4	GUIDE	61871112	8.70	3974	-0.055	-0.196	0.074	0.119	290.340849	5.123147	-592.98	-1464.69
5	GUIDE	62043480	8.89	3970	0.043	0.122	0.119	0.325	291.375882	4.831705	604.44	2202.71
6	GUIDE	62003248	9.09	3977	0.108	0.173	0.090	0.148	291.268960	4.592557	1449.96	1786.39
7	GUIDE	62021832	9.25	3976	-0.095	0.048	0.082	0.137	290.889874	5.387344	-1463.28	541.79

2.4 Star Slots

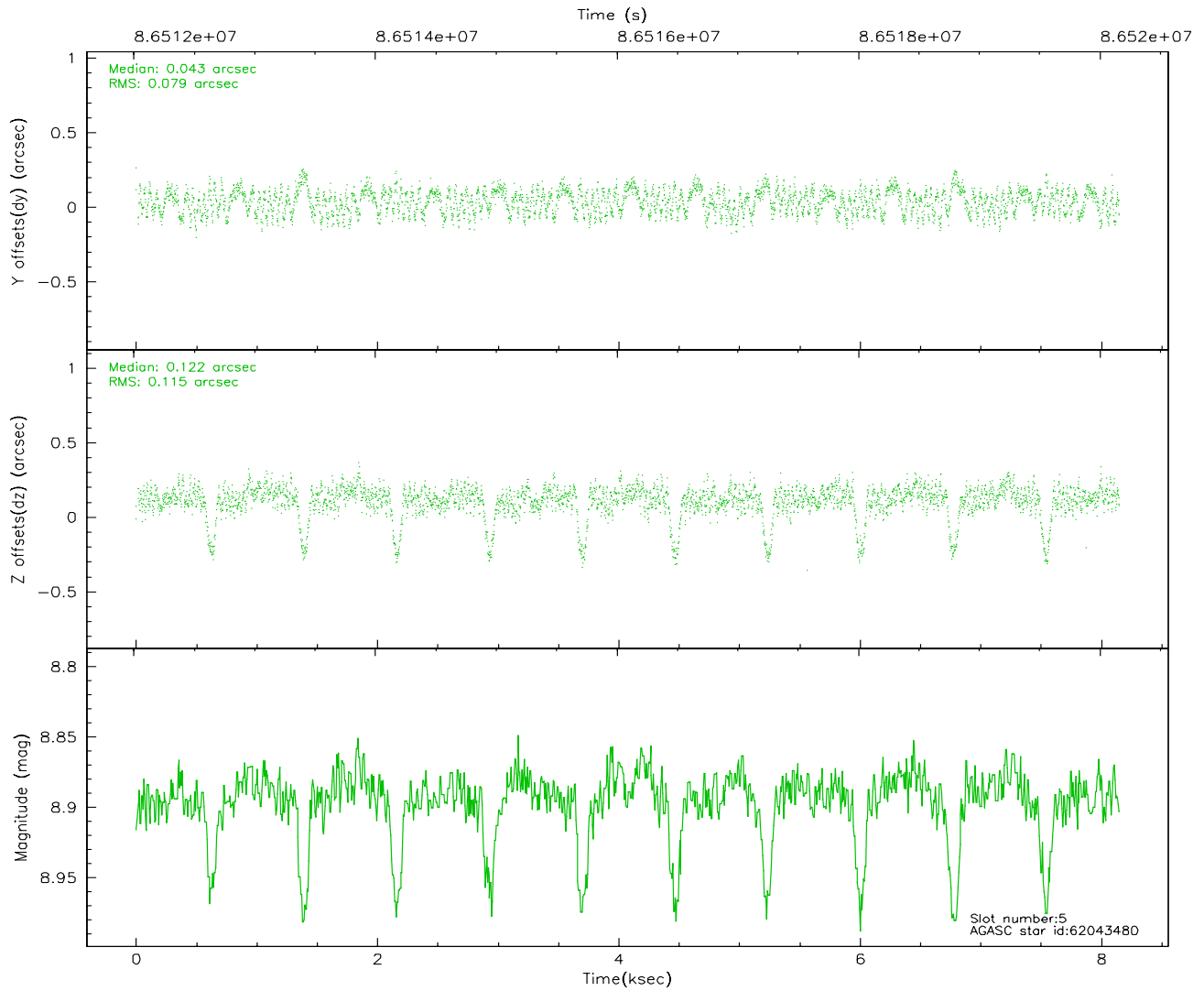
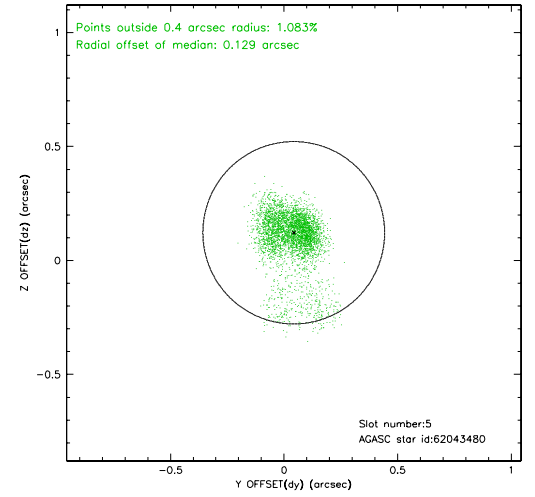
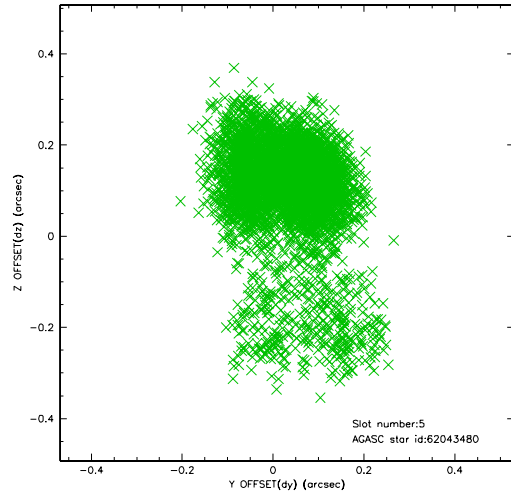
2.4.1 Slot 3



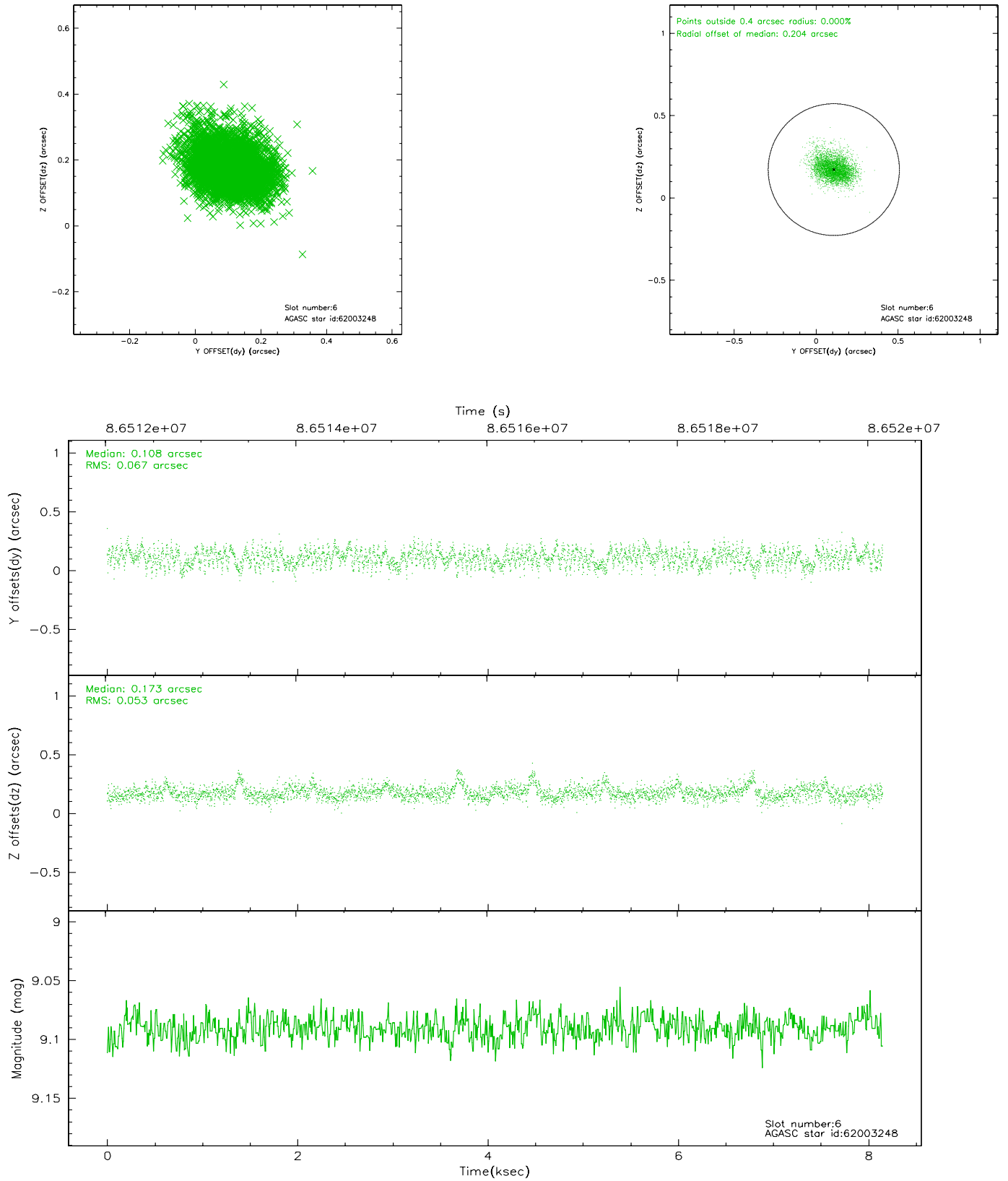
2.4.2 Slot 4



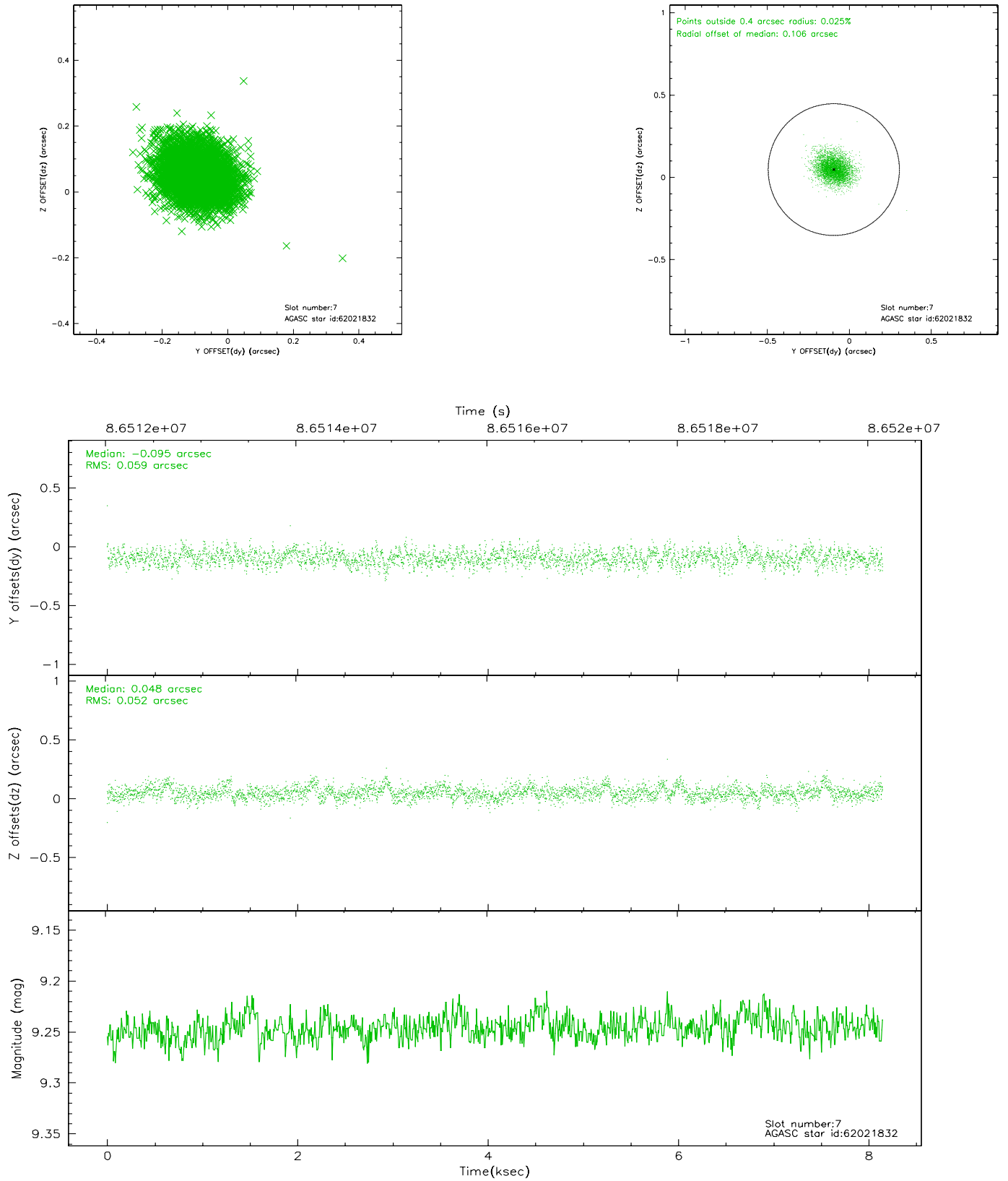
2.4.3 Slot 5



2.4.4 Slot 6

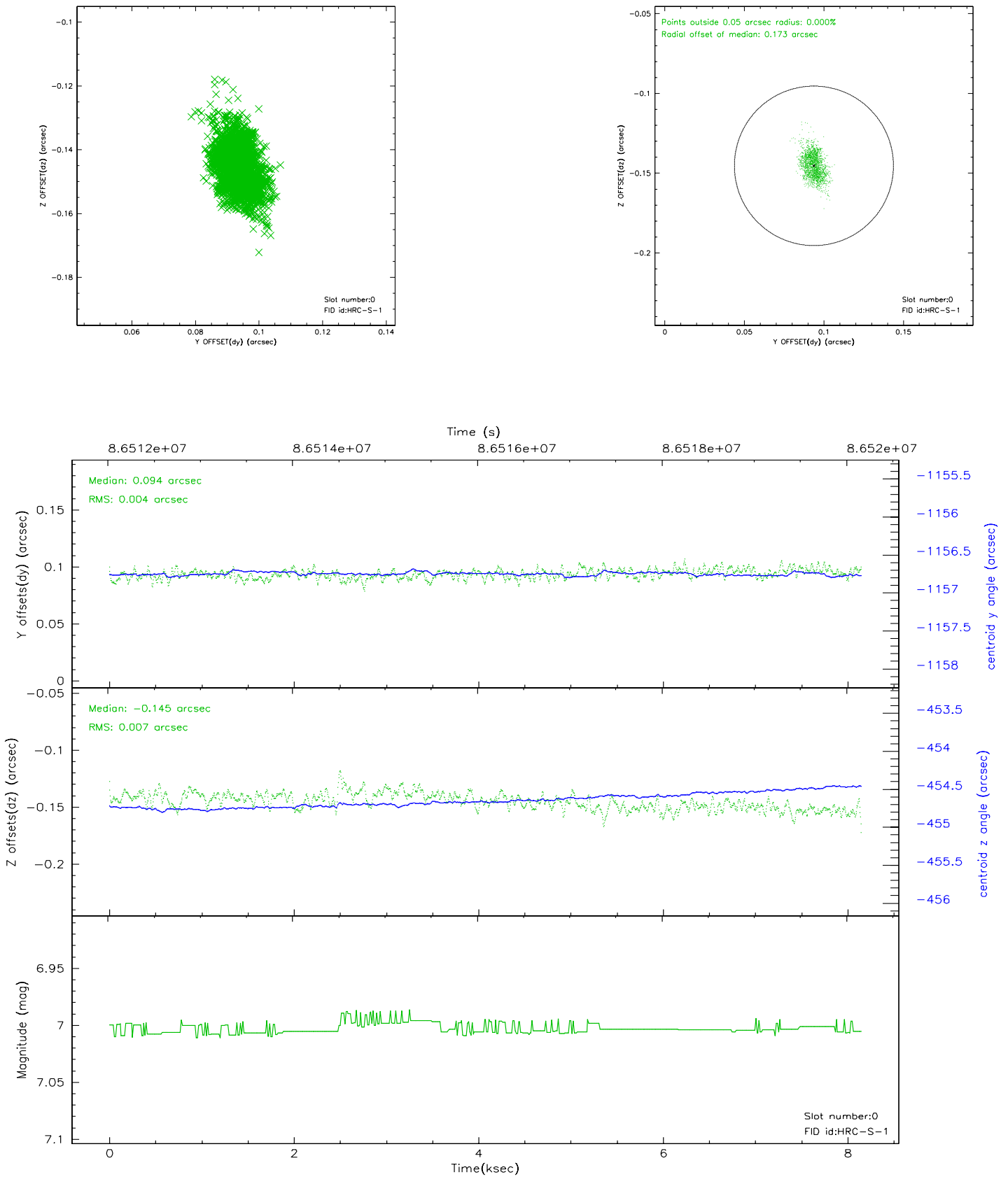


2.4.5 Slot 7

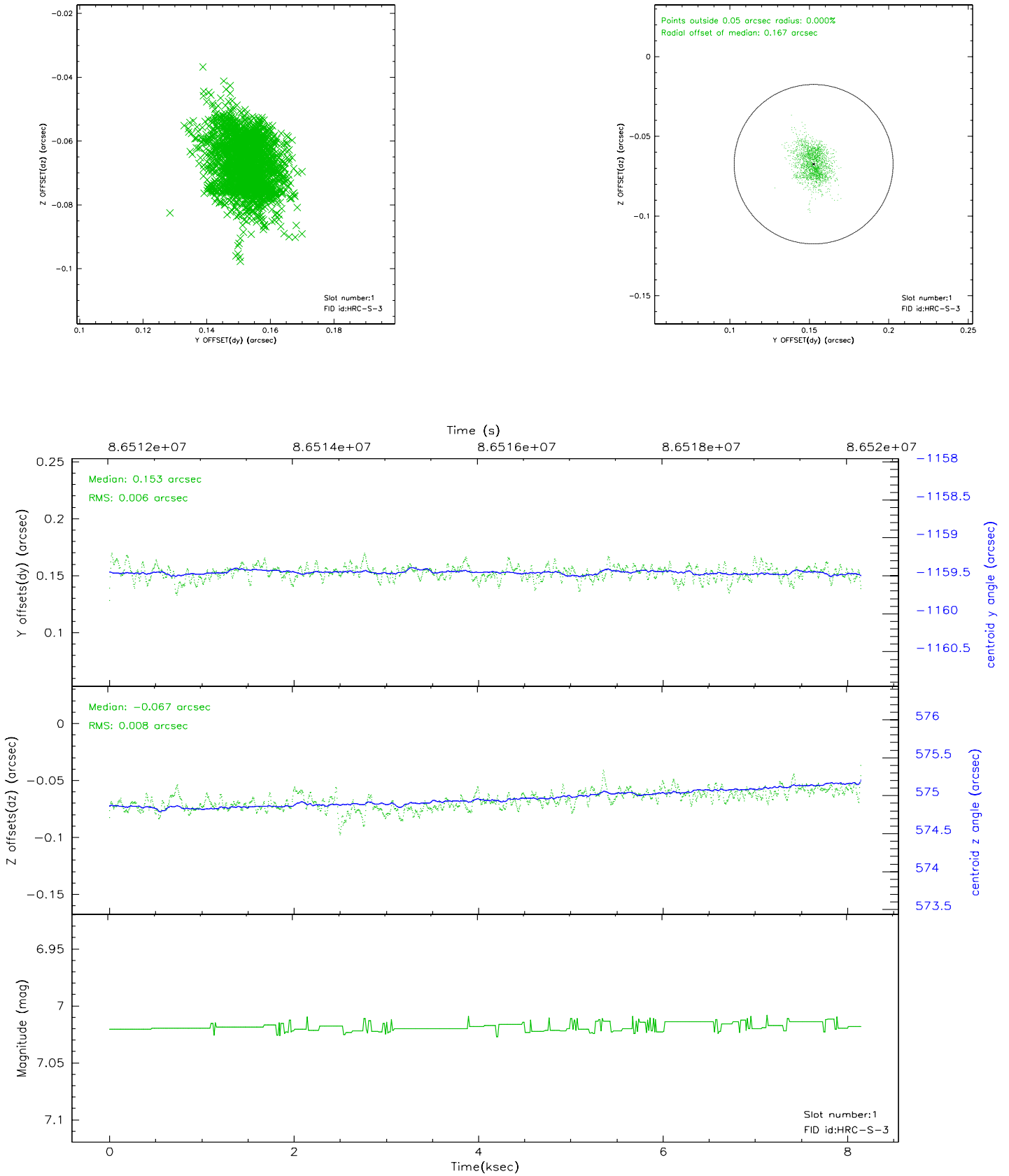


2.5 FID Slots

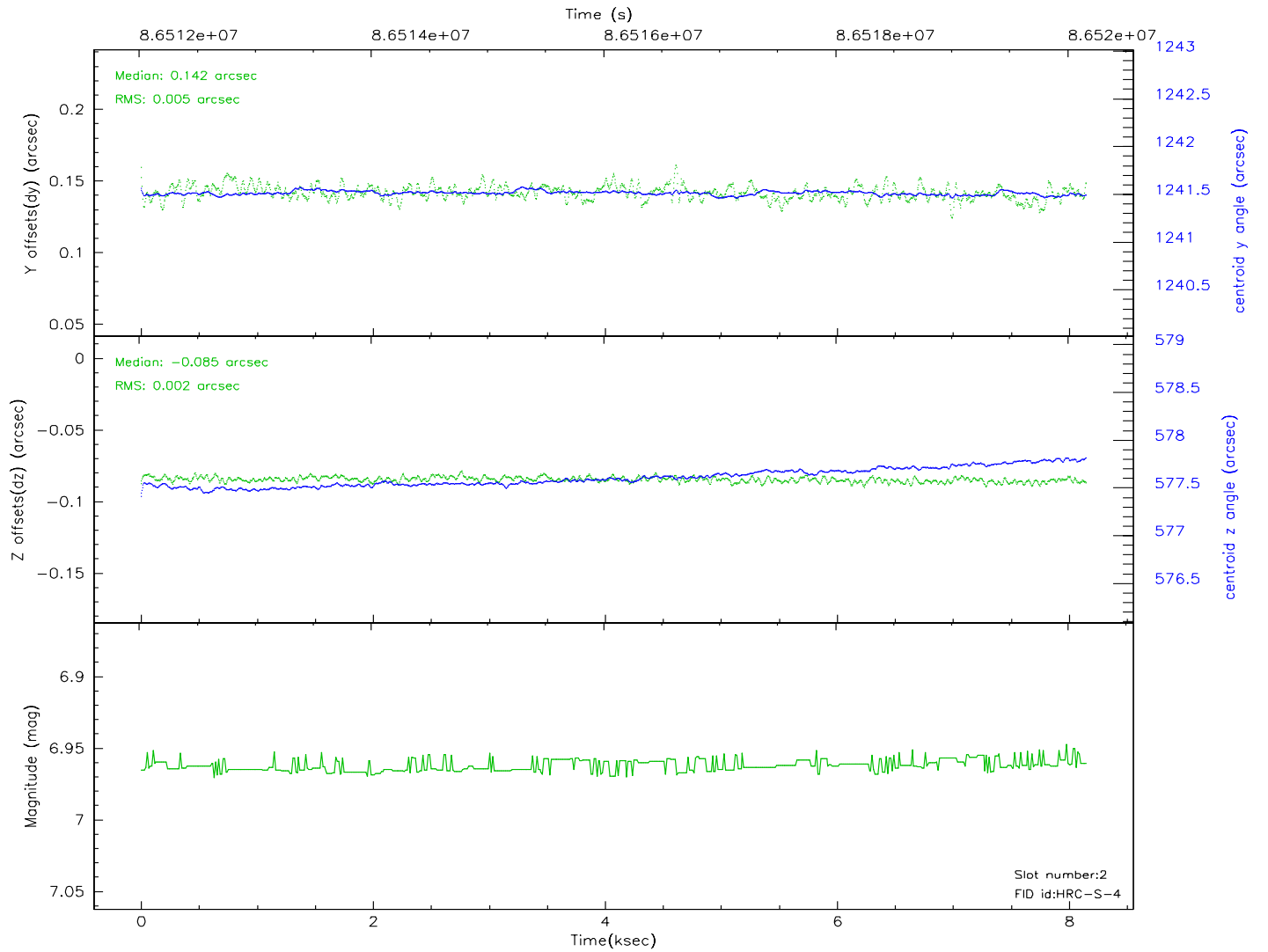
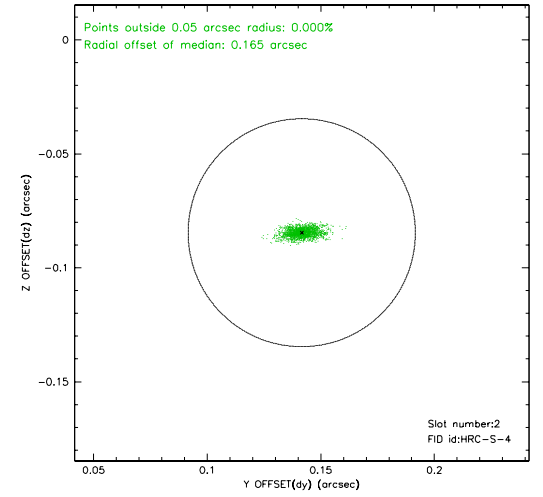
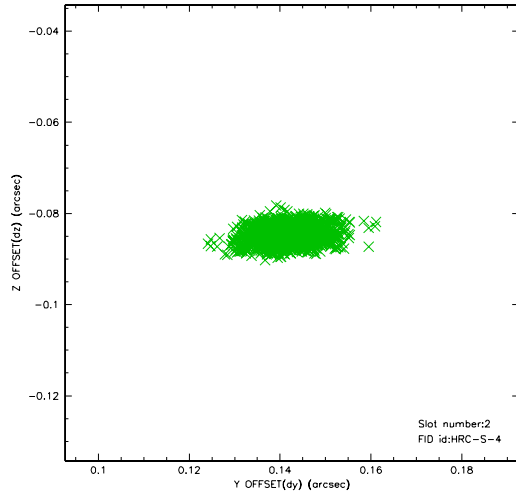
2.5.1 Slot 0



2.5.2 Slot 1

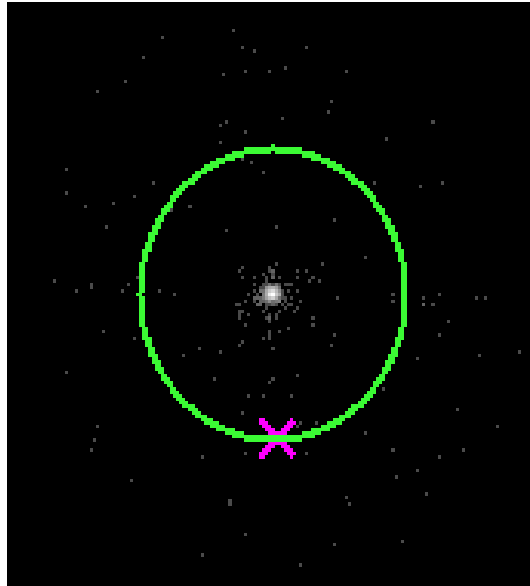


2.5.3 Slot 2



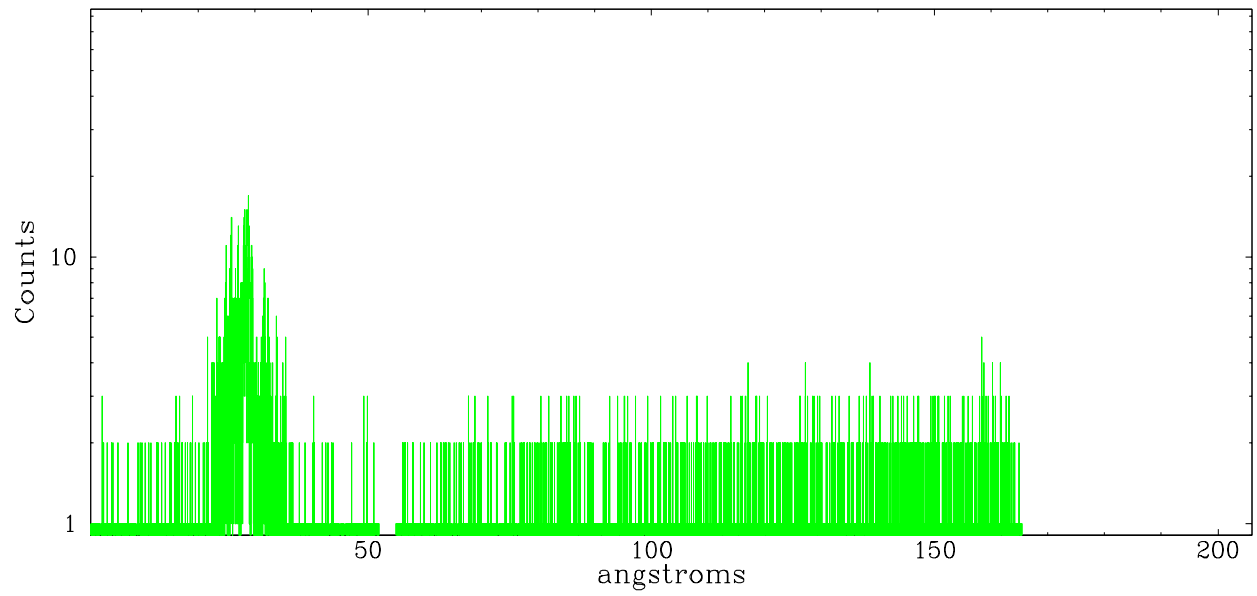
3 Gratings

3.1 LETG Arm

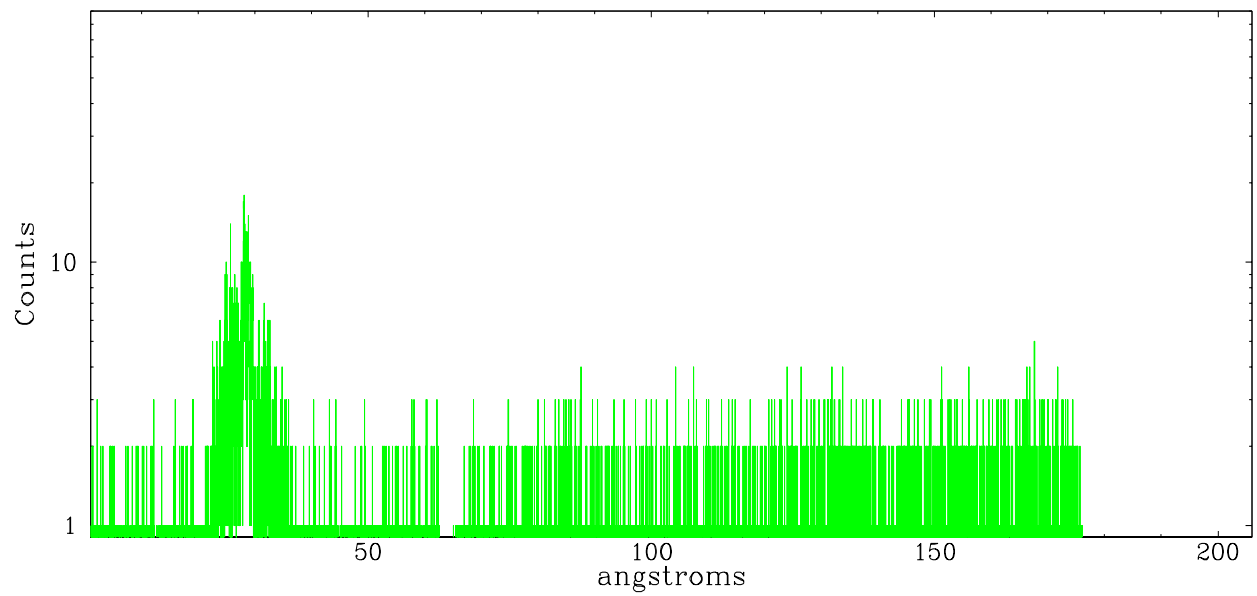


LETG Zero Order

leg order -1



leg order $+1$



A Summary

A.1 Status

V&V Scientist	Joy Nichols
V&V Date (YYYY-MM-DD)	2007.06.13
V&V Edition	1
V&V Disposition and Status	OK
V&V Charge Time	8.145

A.2 Comments