

# V&V Reference Report

## L2 ASCDS Version : 7.6.10

Observation 616 - L2 Version 001  
Chandra X-Ray Center

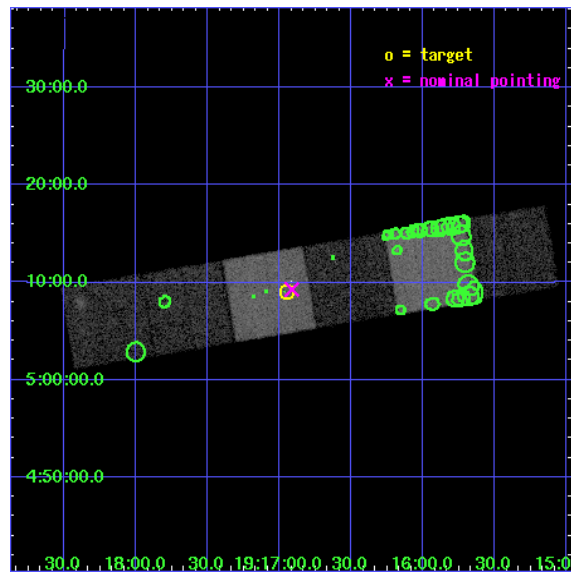
L2 Processing Date : May 30 2007

## Contents

<b>1</b>	<b>Front</b>	<b>2</b>
<b>2</b>	<b>OBI</b>	<b>3</b>
2.1	OBI . . . . .	3
2.1.1	Images . . . . .	3
2.1.2	Bias . . . . .	3
2.1.3	Parameters . . . . .	4
2.1.4	Events . . . . .	4
2.2	Compared Parameters . . . . .	5
2.3	Aspect . . . . .	6
2.4	Star Slots . . . . .	9
2.4.1	Slot 3 . . . . .	9
2.4.2	Slot 4 . . . . .	10
2.4.3	Slot 5 . . . . .	11
2.4.4	Slot 6 . . . . .	12
2.4.5	Slot 7 . . . . .	13
2.5	FID Slots . . . . .	14
2.5.1	Slot 0 . . . . .	14
2.5.2	Slot 1 . . . . .	15
2.5.3	Slot 2 . . . . .	16
<b>3</b>	<b>Point Sources</b>	<b>17</b>
<b>A</b>	<b>Summary</b>	<b>18</b>
A.1	Status . . . . .	18
A.2	Comments . . . . .	18

# 1 Front

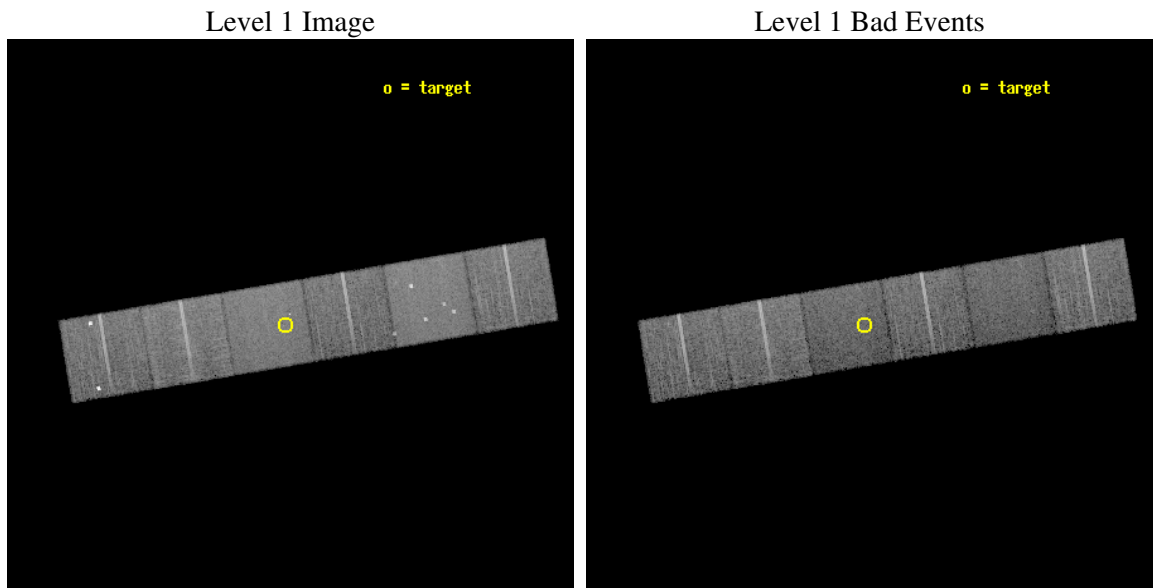
seq_num	200041
obs_id	616
title	X-RAY EMISSION AT THE BOTTOM OF THE MAIN SEQUENCE
observer	DR. THOMAS FLEMING
object	VB 10
dtcycle	0
cycle	P
ra_targ	289.237917
dec_targ	5.151361
ra_nom	289.2285241469
dec_nom	5.1547510535697
roll_nom	170.42375206102
revision	3
ontime	12419.200011566
livetime	12261.940623075
ontime4	12419.200011566
ontime5	12419.200011566
ontime6	12419.200011566
ontime7	12419.200011566
ontime8	12419.200011566
ontime9	12419.200011566
l2events	118721



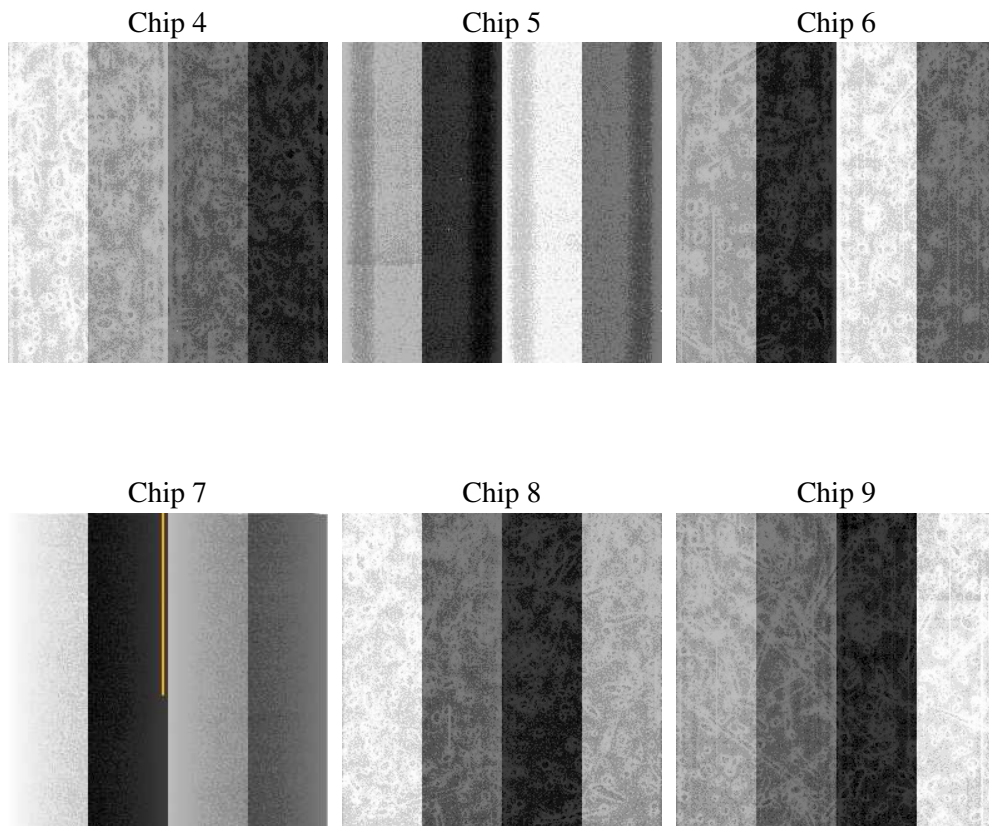
## 2 OBI

### 2.1 OBI

#### 2.1.1 Images



#### 2.1.2 Bias



### 2.1.3 Parameters

obi_num	0
ascdsver	7.6.10
caldsver	3.4.0
date	2007-05-30T11:17:52
revision	3

sched_exp_time	12285.000000
ontime	12419.200011566
ontime4	12419.200011566
ontime5	12419.200011566
ontime6	12419.200011566
ontime7	12419.200011566
ontime8	12419.200011566
ontime9	12419.200011566
l1events	593584

### 2.1.4 Events

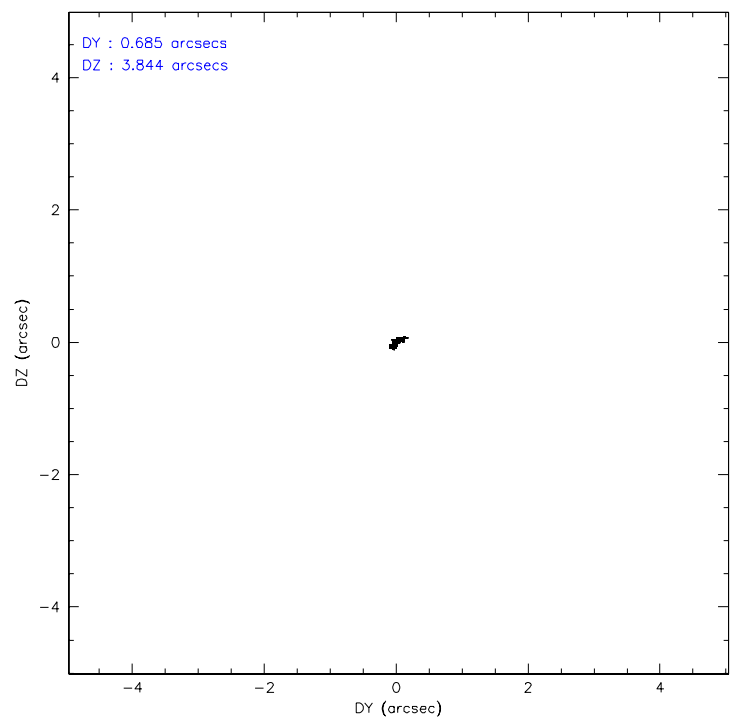
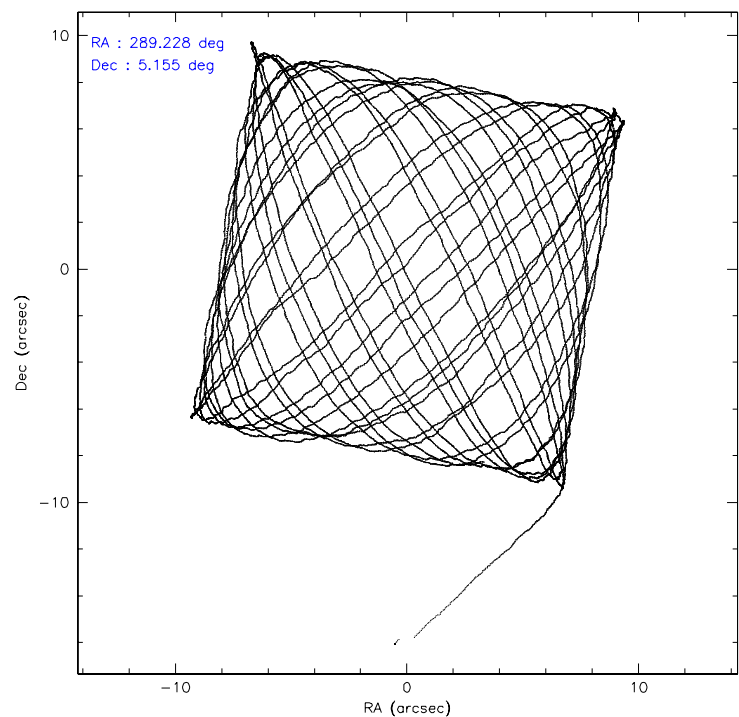
	ccd 4	ccd 5	ccd 6	ccd 7	ccd 8	ccd 9
level 1 events	95566	114126	84218	100336	105531	93807
rejected events	86167	61364	75267	59282	86251	76958
rejected %	90%	53%	89%	59%	81%	82%

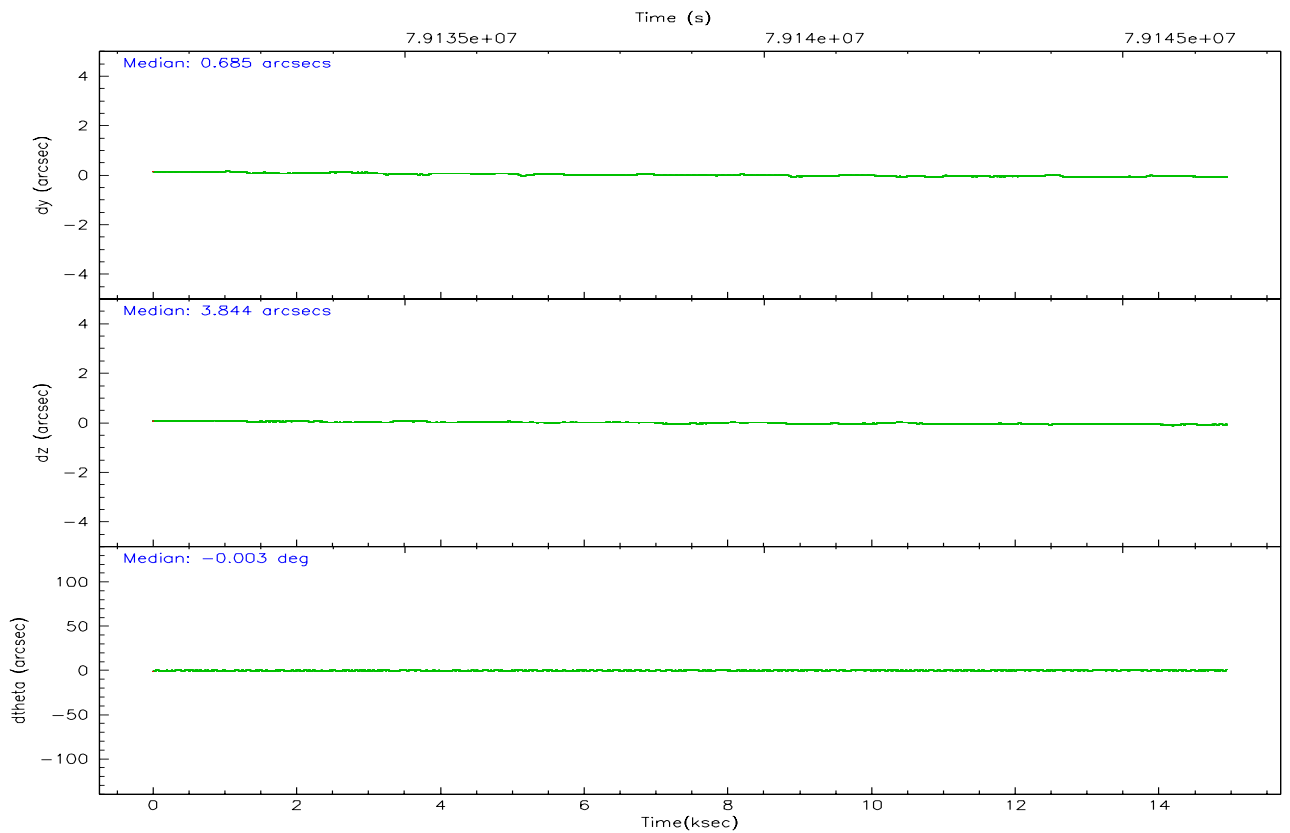
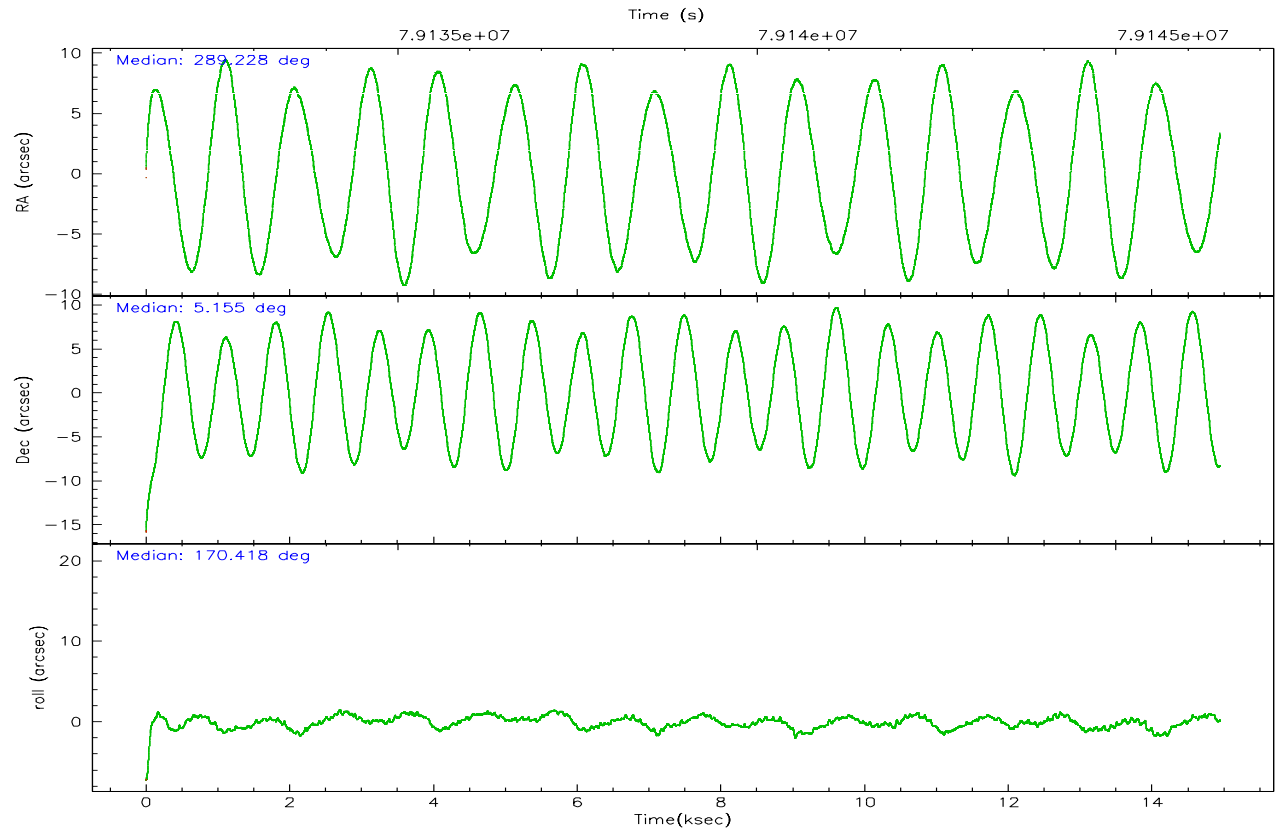
	ccd 4	ccd 5	ccd 6	ccd 7	ccd 8	ccd 9
grade 0 events	4012	8885	3791	4242	6324	4220
	4%	7%	4%	4%	5%	4%
grade 1 events	41	203	35	111	47	44
	0%	0%	0%	0%	0%	0%
grade 2 events	2238	14707	1772	8327	4353	9359
	2%	12%	2%	8%	4%	9%
grade 3 events	937	2238	960	3867	2142	944
	0%	1%	1%	3%	2%	1%
grade 4 events	872	2118	946	3812	1992	922
	0%	1%	1%	3%	1%	0%
grade 5 events	2616	8346	3235	9642	4058	3170
	2%	7%	3%	9%	3%	3%
grade 6 events	1602	26356	1760	21937	4991	1876
	1%	23%	2%	21%	4%	1%
grade 7 events	83248	51273	71719	48398	81624	73272
	87%	44%	85%	48%	77%	78%

## 2.2 Compared Parameters

Parameter	Planned	Actual	Parameter	Planned	Actual
Instrument	ACIS	ACIS	Obspar format version number	6	6
Detector	ACIS-456789	ACIS-456789	Obspar file type	PREDICTED	ACTUAL
Grating	NONE	NONE	Obspar update status	NONE	UPDATED
Data mode	FAINT	FAINT	Number of optional ACIS chips dropped	0	0
Observation mode	POINTING	POINTING	On-chip summing requested	N	N
Pointing RA	289.254266	289.2285241468996	Subarray requested	NONE	NONE
Pointing Dec	5.164461	5.154751053569677	Alternating exposures requested	N	N
Pointing Roll	170.264807	170.4237520610208	Primary exposure time	3.200000	3.2
SIM focus pos (mm)	-0.684267	-0.6828225247311905			
SIM defocus (mm)	0	0.001444936568705701			
SIM translation stage pos (mm)	-190.132523	-190.1425803651734			
SIM translation stage offset (mm)	0	0.01005778216563158			
Observation start time	79131641.184000	79130418.32705			
Observation start date	2000-07-04T20:59:37	2000-07-04T20:40:18			
Observation end time	79143926.184000	79147054.59016301			
Observation end date	2000-07-05T00:24:22	2000-07-05T01:17:34			
Read mode	TIMED	TIMED			

### 2.3 Aspect





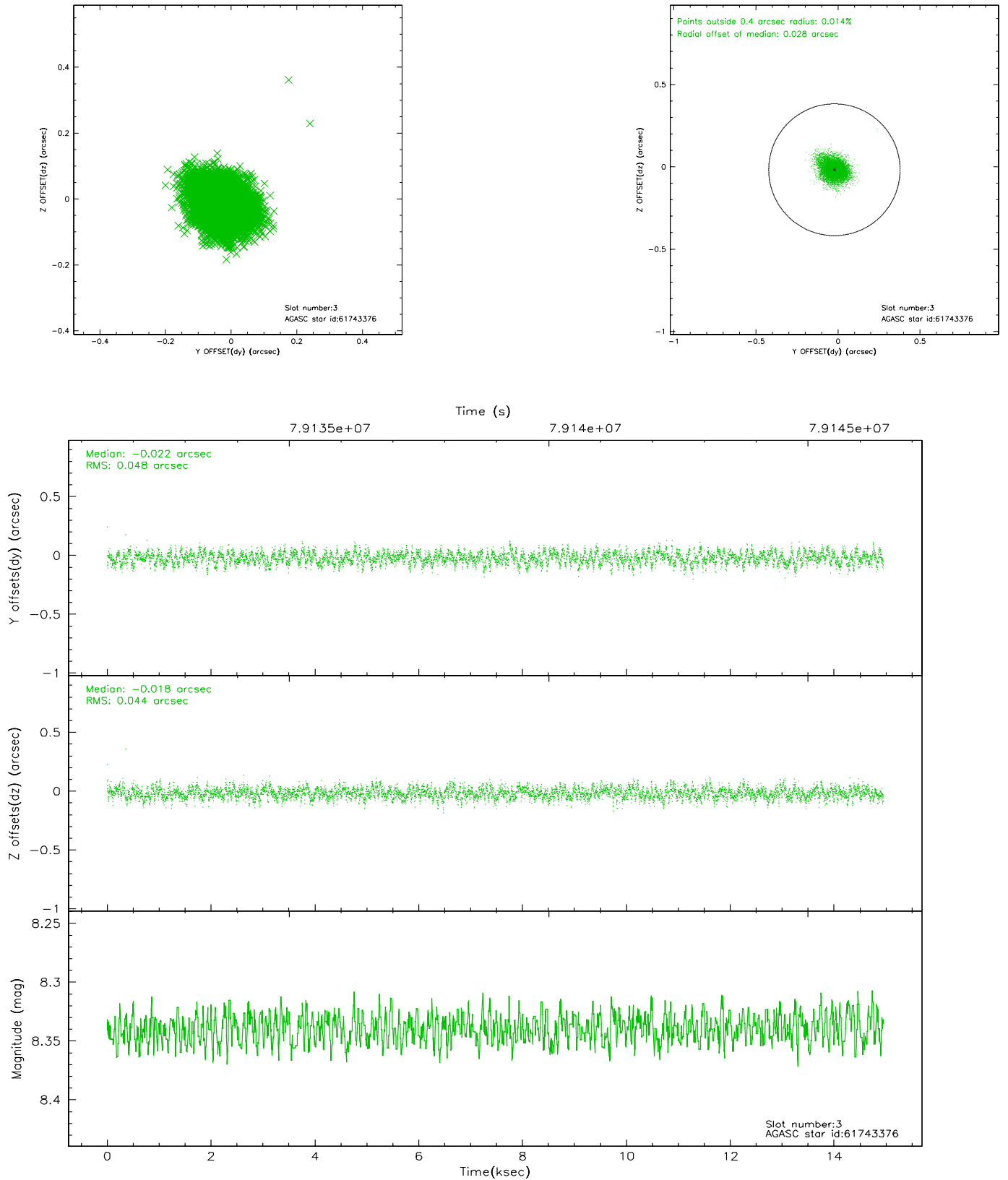
### Slot Statistics

slot	status	id	mag	n_pts	med_dy	med_dz	dr1	dr2	ra	dec	mean_y	mean_z
0	FID	ACIS-S-2	7.11	3647	-0.010	-0.006	0.007	0.011	0.000000	0.000000	-753.32	-1724.86
1	FID	ACIS-S-4	7.21	3644	-0.013	0.006	0.005	0.009	0.000000	0.000000	2159.85	183.27
2	FID	ACIS-S-5	7.24	3644	-0.009	0.008	0.006	0.011	0.000000	0.000000	-1805.73	177.35
3	GUIDE	61743376	8.34	7288	-0.022	-0.018	0.069	0.111	288.690993	4.620047	1660.57	2272.72
4	GUIDE	61867344	8.66	7293	0.030	-0.057	0.071	0.119	289.421608	4.970198	-709.68	587.83
5	GUIDE	62408720	8.66	7291	-0.026	0.087	0.070	0.112	289.272224	5.771976	306.42	-2166.31
6	GUIDE	61885144	8.84	7287	0.034	-0.015	0.071	0.119	289.587481	4.886412	-1347.33	783.65
7	GUIDE	61874512	9.14	7292	-0.013	0.002	0.073	0.119	289.461688	5.255068	-677.96	-447.37

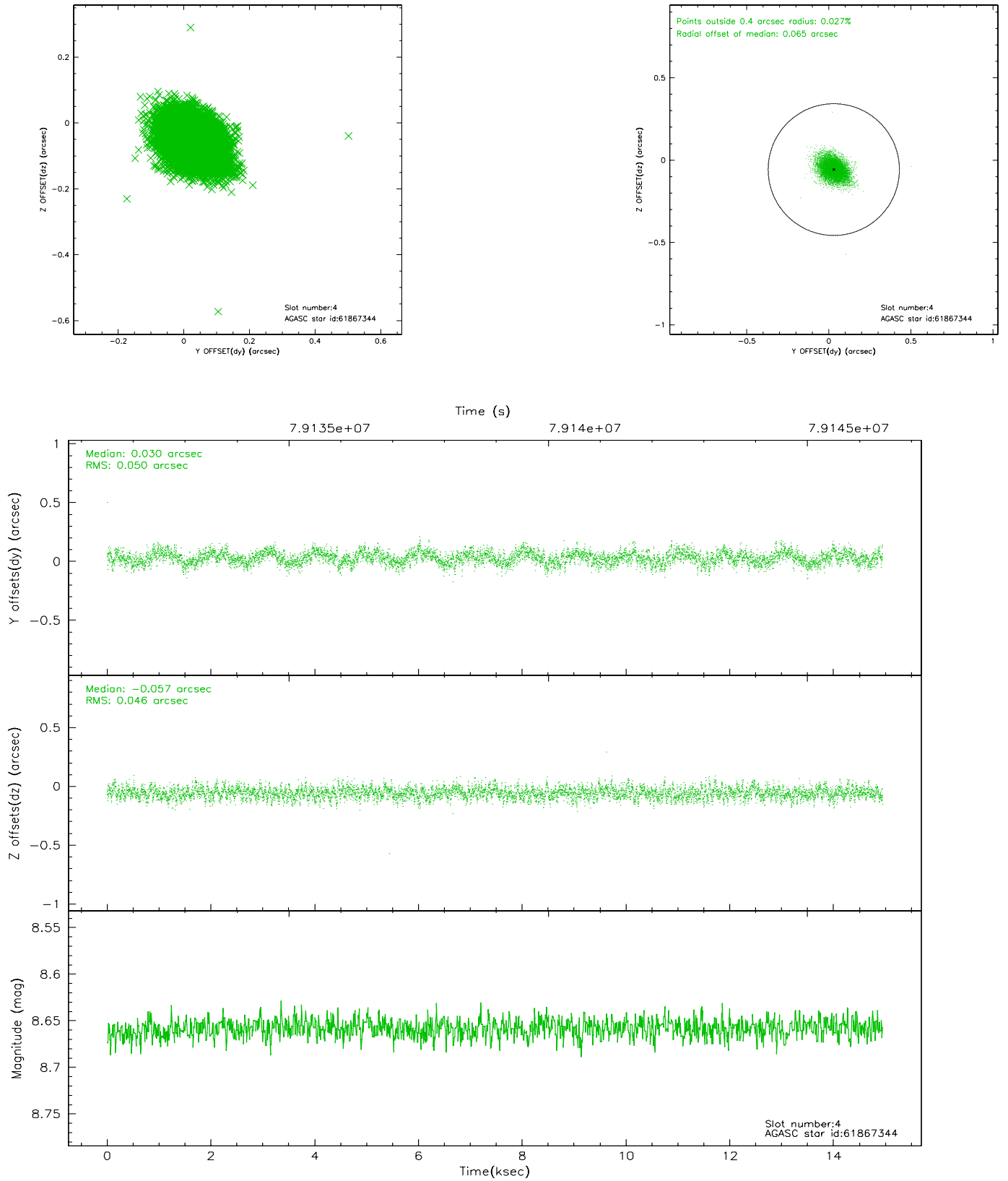


## 2.4 Star Slots

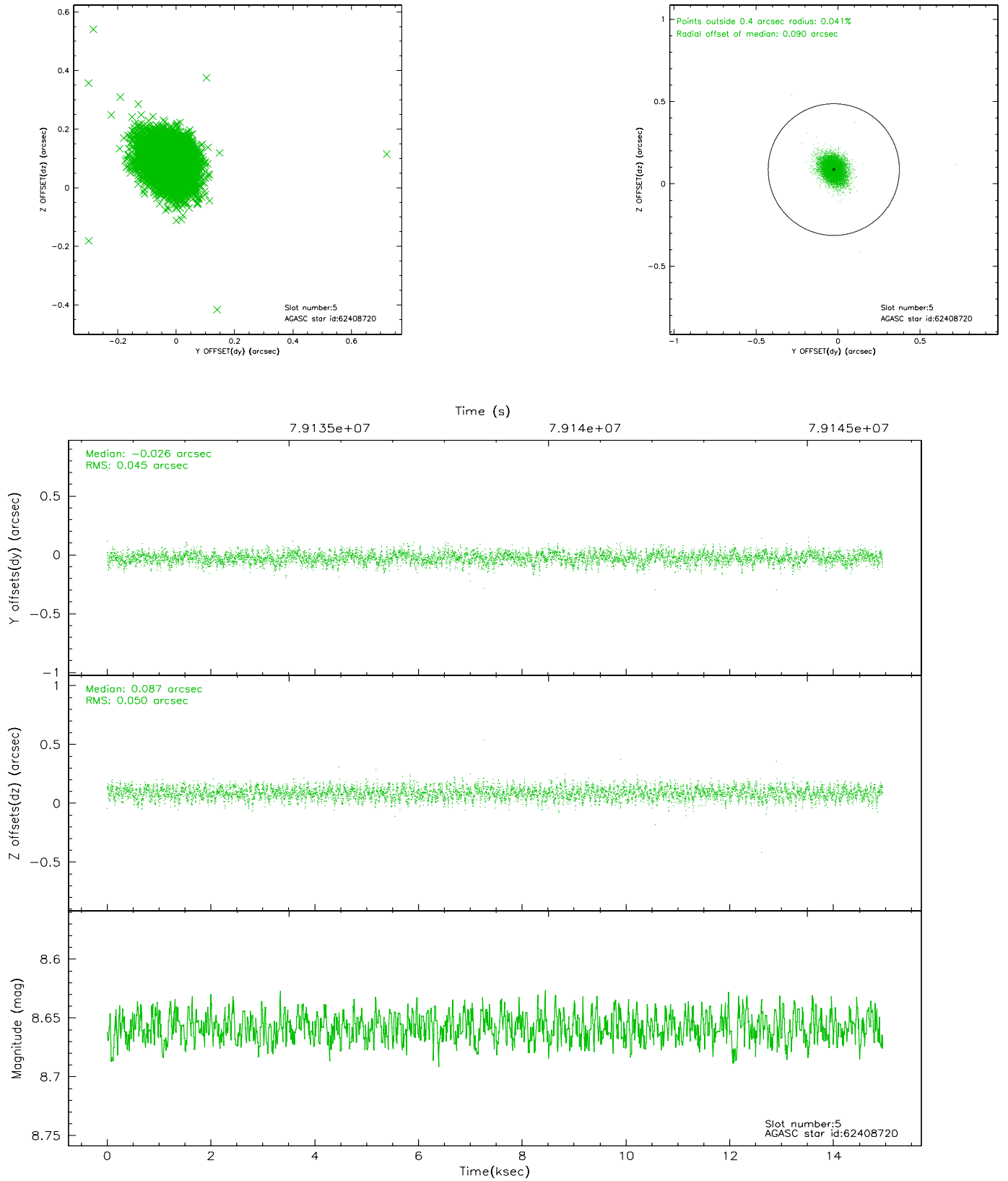
### 2.4.1 Slot 3



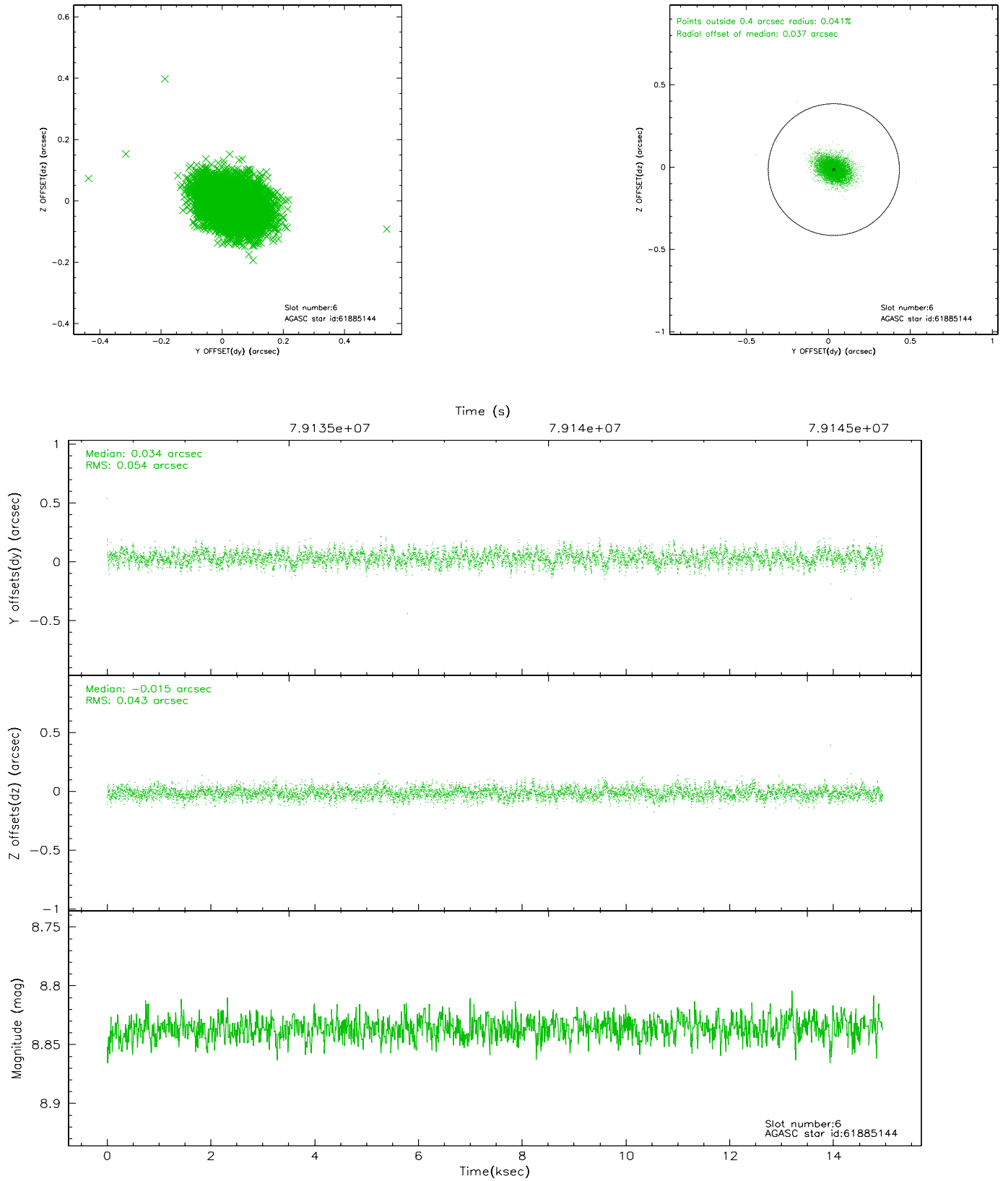
## 2.4.2 Slot 4



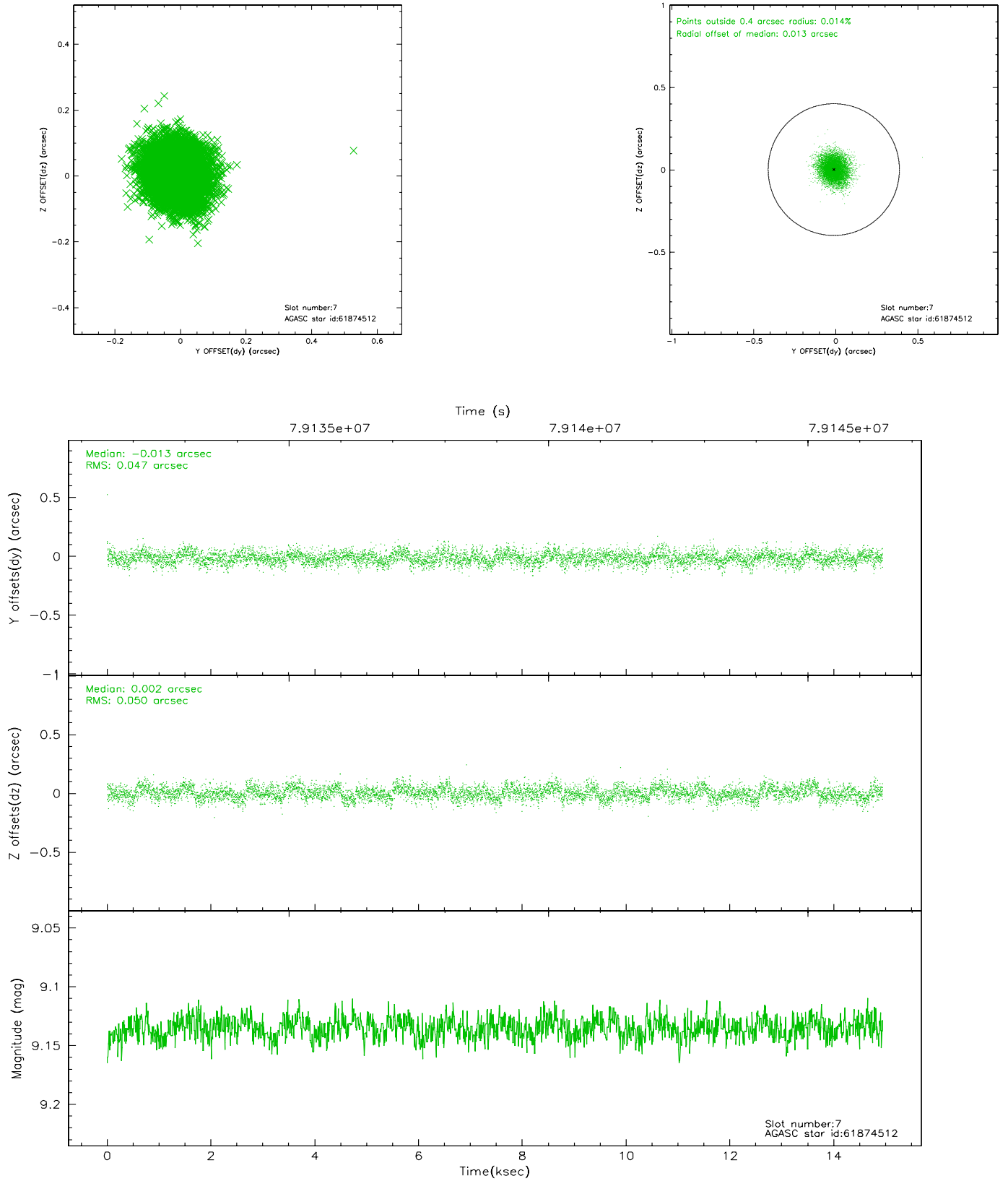
### 2.4.3 Slot 5



## 2.4.4 Slot 6

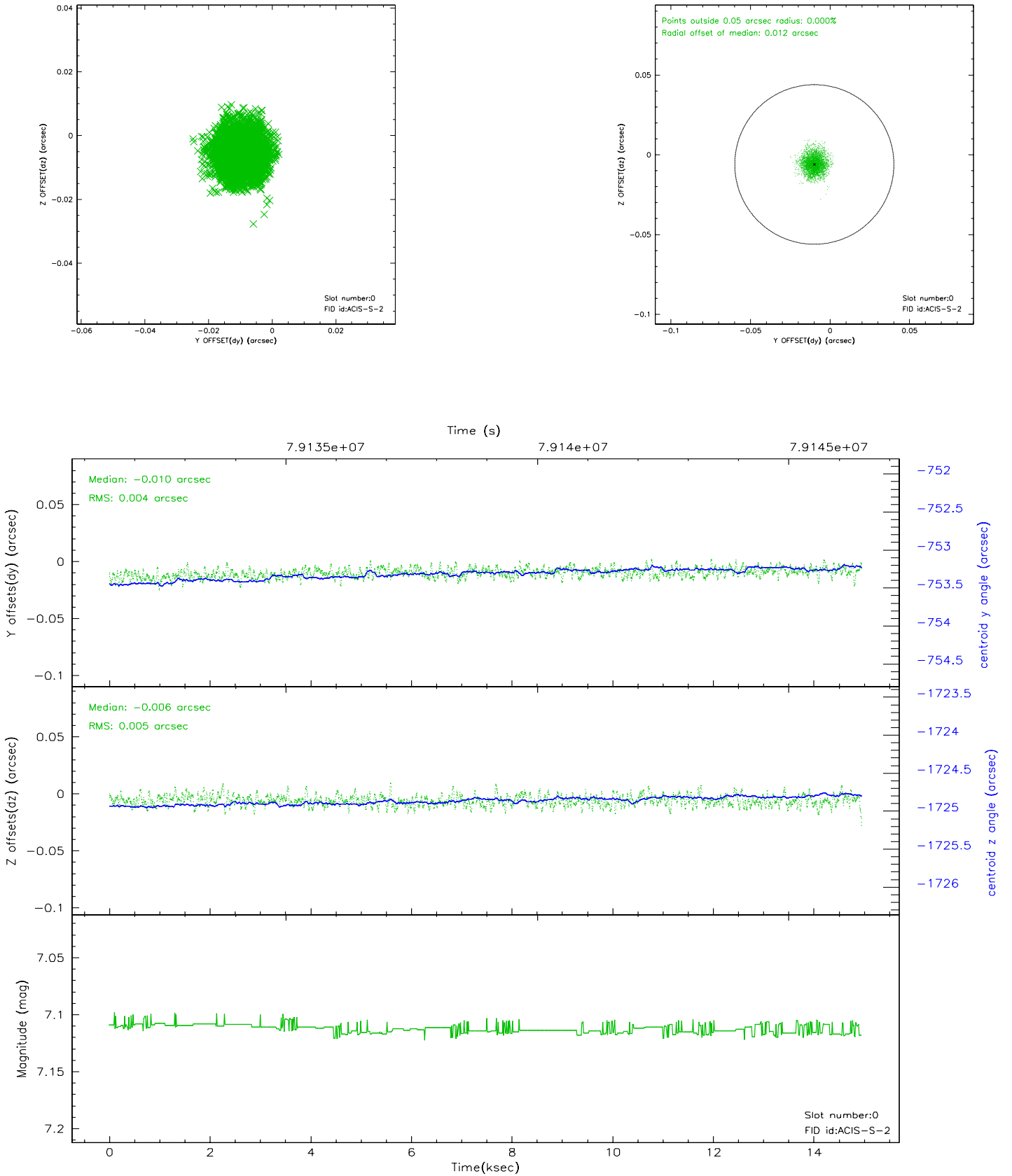


## 2.4.5 Slot 7

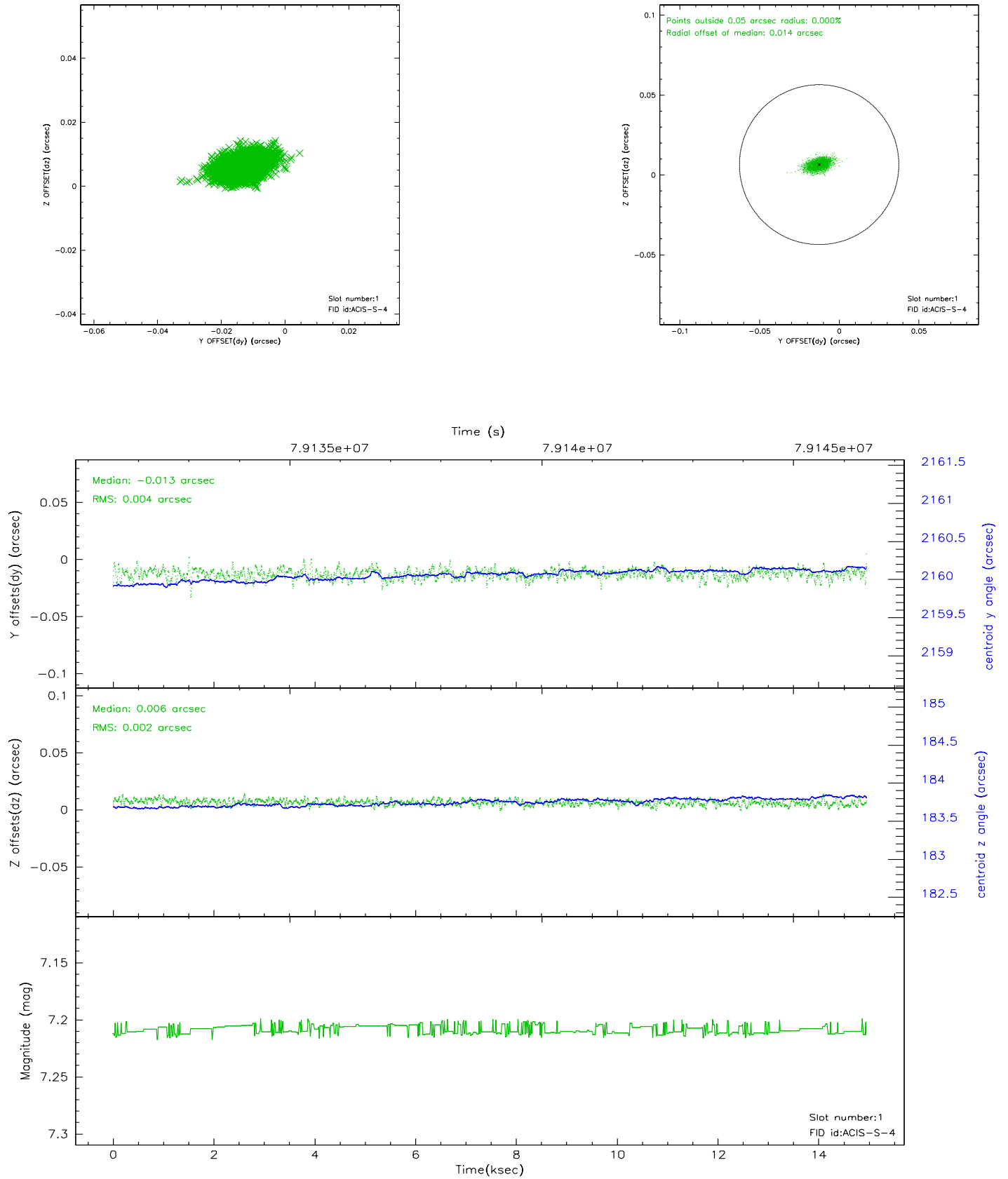


## 2.5 FID Slots

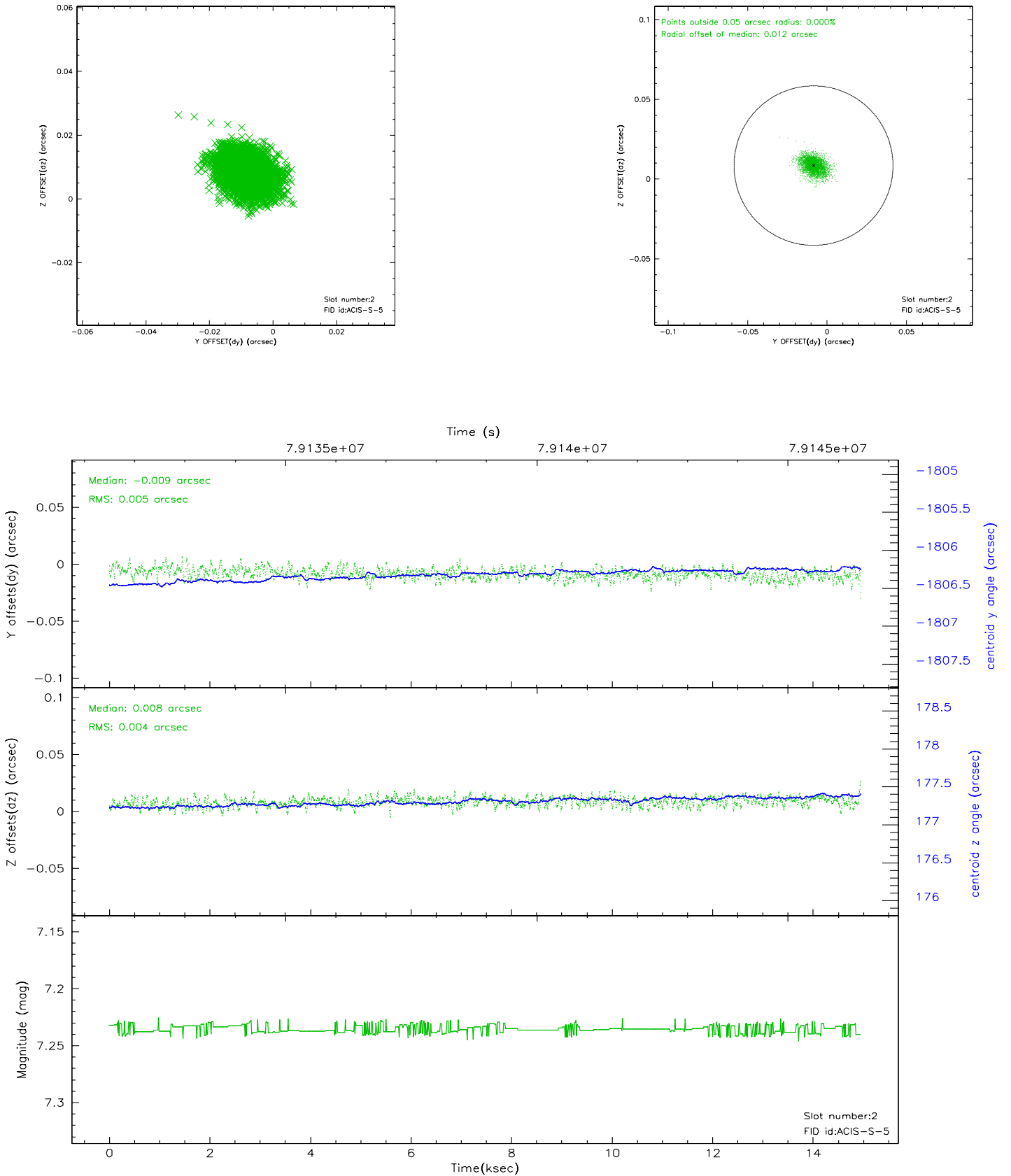
### 2.5.1 Slot 0



## 2.5.2 Slot 1

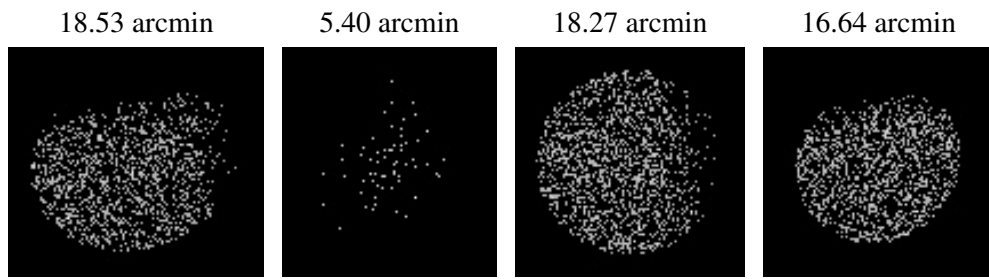


### 2.5.3 Slot 2





### 3 Point Sources



# A Summary

## A.1 Status

V&V Scientist	Jen Lauer
V&V Date (YYYY-MM-DD)	2007.05.30
V&V Edition	1
V&V Disposition and Status	OK
V&V Charge Time	12.428

## A.2 Comments

Focal plane temperature is warmer than -118.7 C degrees for the entire observation. The ACIS spectral response calibration for the front-illuminated chips is less accurate at these warmer temperatures than it is at -119.7 C. The back-illuminatd chips are not affected at the focal plane temperatures recorded for this observation. Users whose science objectives depend on the most accurate spectral response (i.e.: fitting line-rich spectra) may notice an effect. Users whose science objectives do not depend on the most accurate spectral response should not notice an effect.