

V&V Reference Report

L2 ASCDS Version : 7.6.10

Observation 608 - L2 Version 001
Chandra X-Ray Center

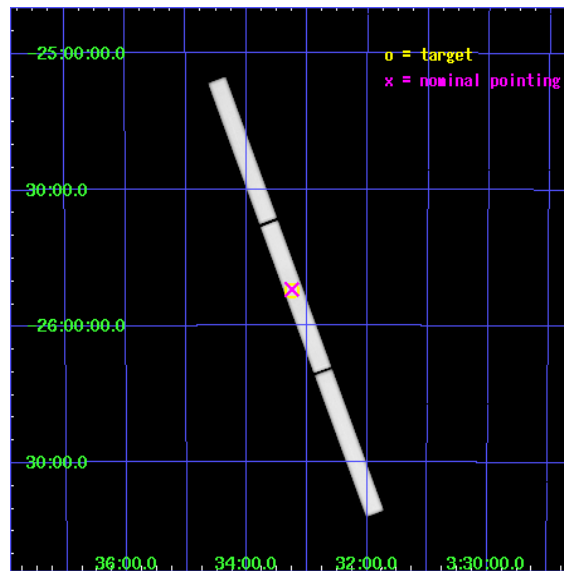
L2 Processing Date : Jun 8 2007

Contents

1	Front	2
2	OBI	3
2.1	OBI	3
2.1.1	Images	3
2.1.2	Parameters	4
2.1.3	Events	4
2.2	Compared Parameters	5
2.3	Aspect	6
2.4	Star Slots	9
2.4.1	Slot 3	9
2.4.2	Slot 4	10
2.4.3	Slot 5	11
2.4.4	Slot 6	12
2.4.5	Slot 7	13
2.5	FID Slots	14
2.5.1	Slot 0	14
2.5.2	Slot 1	15
2.5.3	Slot 2	16
3	Gratings	17
3.1	LETG Arm	17
A	Summary	19
A.1	Status	19
A.2	Comments	19

1 Front

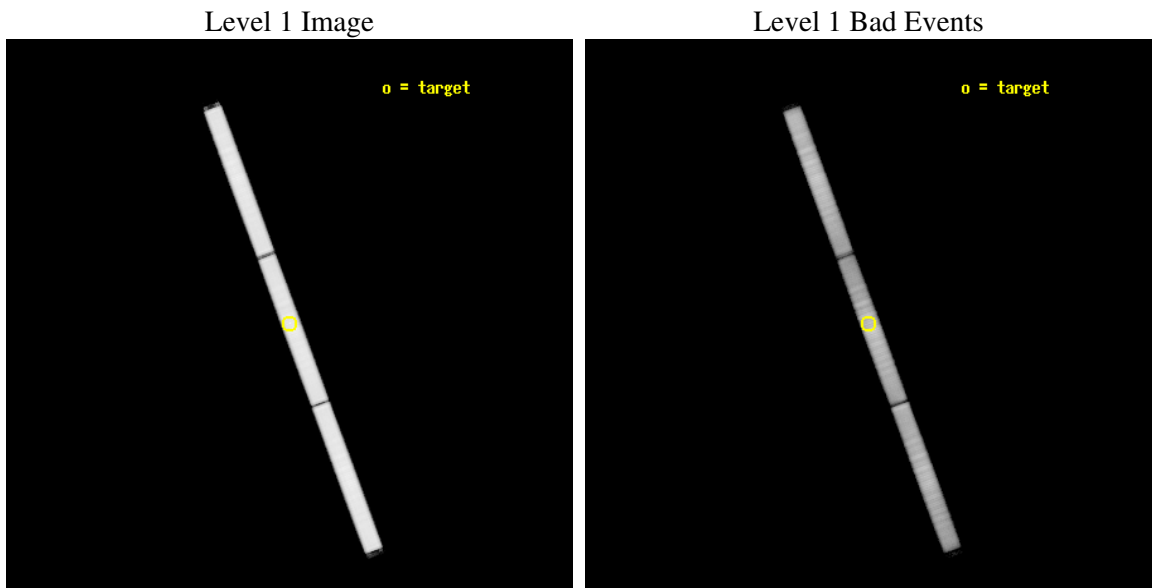
seq_num	200033
obs_id	608
title	PHOTOSPHERIC METAL ABUNDANCES IN THE VERY HOT, HYDROGEN-RICH CENTRAL STARS OF THE PLANETARY NEBULAE NGC1360 AND NGC6853
observer	Dr. Thomas Rauch
object	NGC 1360
ra_targ	53.31103
dec_targ	-25.871661
ra_nom	53.313149753138
dec_nom	-25.867165027634
roll_nom	69.600468340243
revision	4
ontime	94292.059801176
livetime	93674.243233864
l2events	4406124



2 OBI

2.1 OBI

2.1.1 Images



2.1.2 Parameters

obi_num	0
ascdsver	7.6.10
caldbver	3.4.0
date	2007-06-08T14:51:07
revision	4

sched_exp_time	94062.082000
ontime	94292.059801176
l1events	6446649

2.1.3 Events

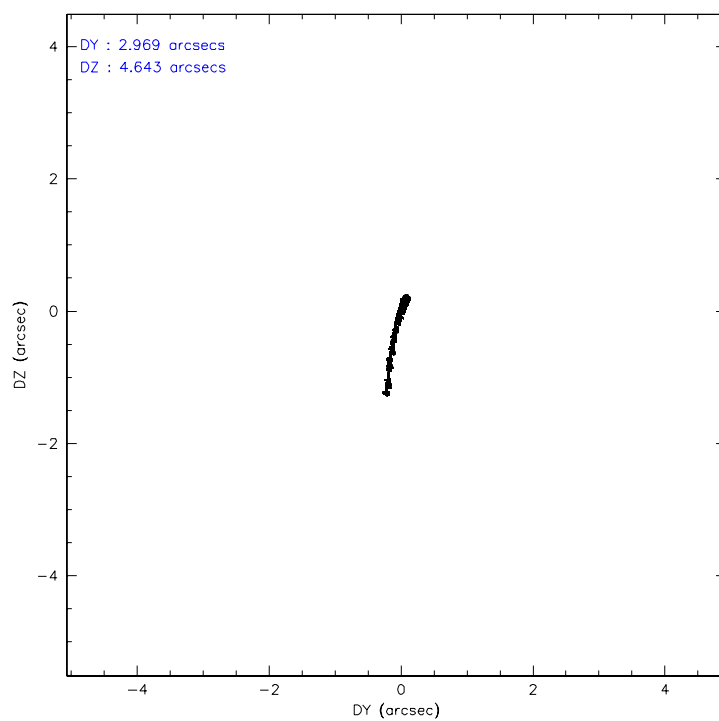
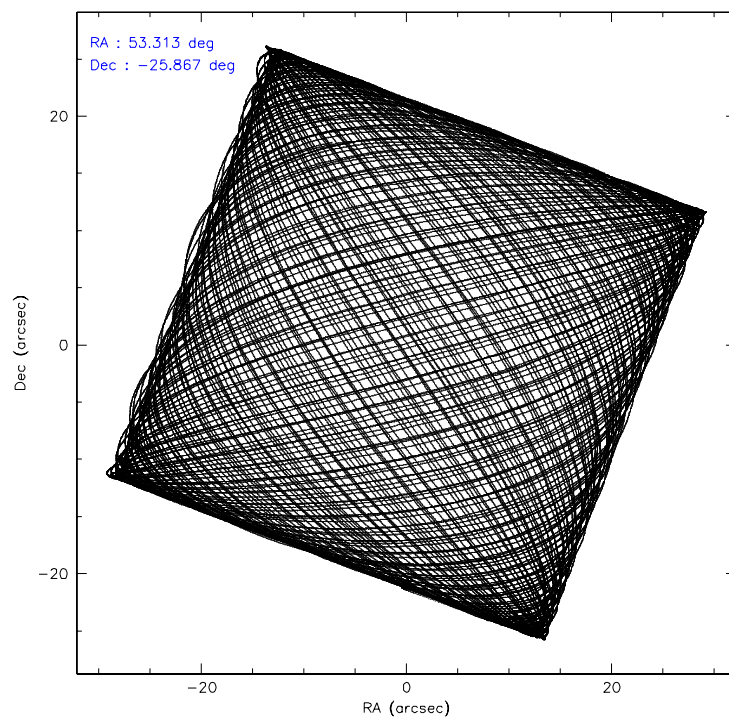
Level 1 Events

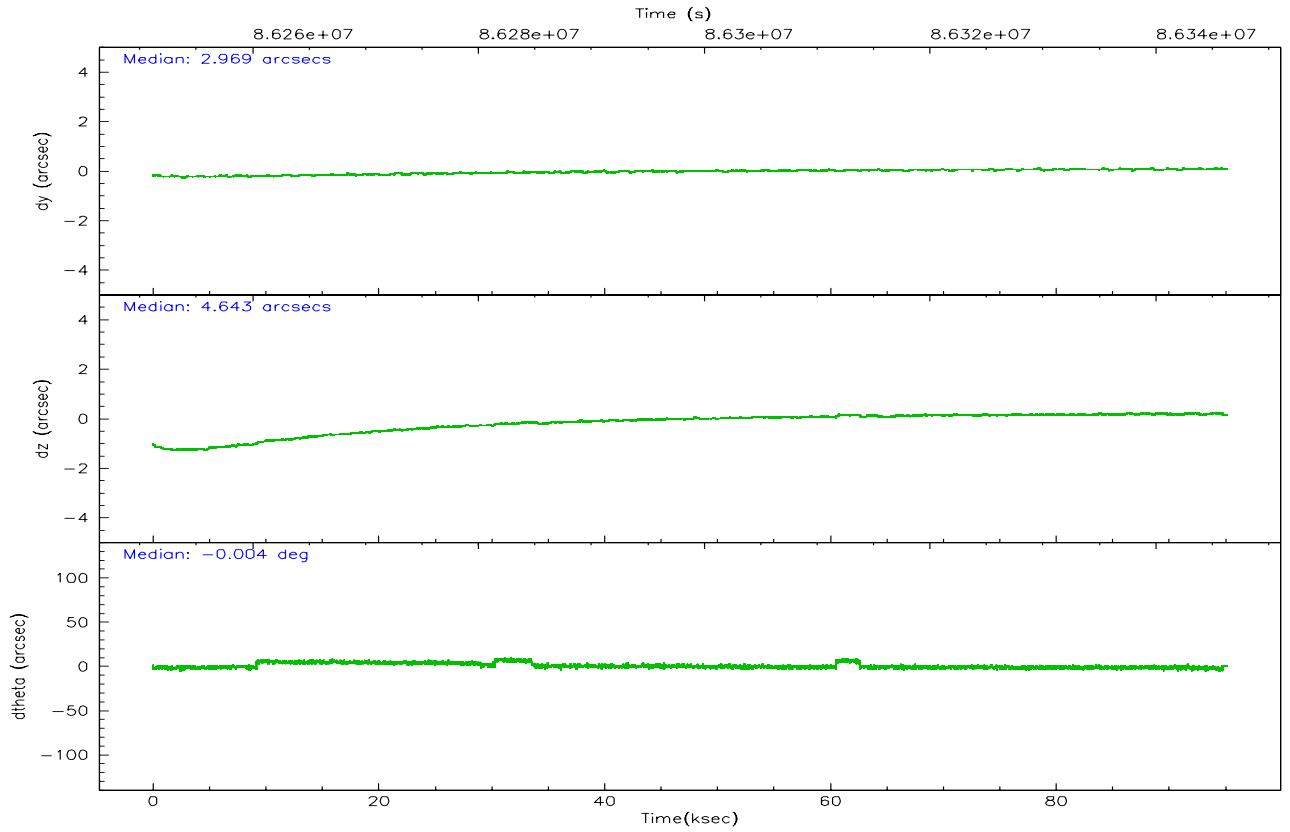
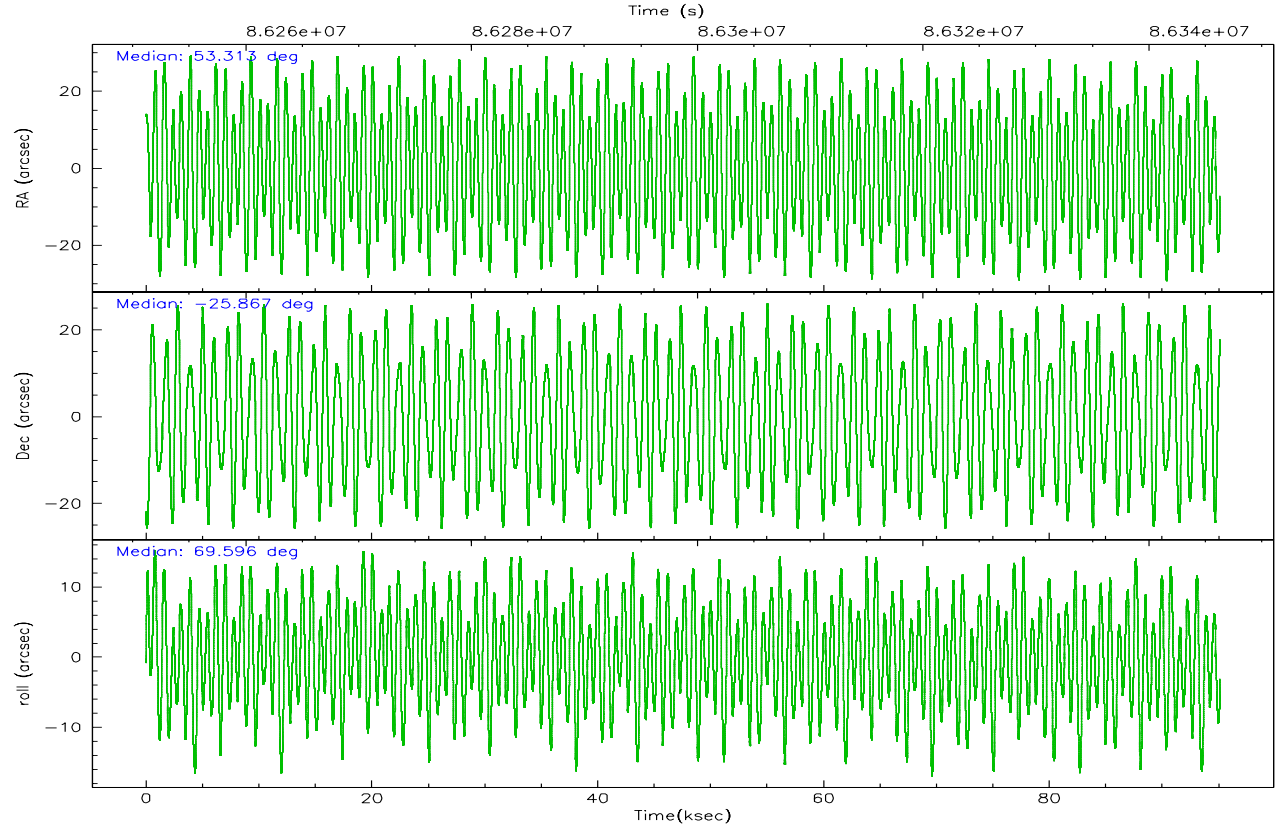
	segment 1	segment 2	segment 3
level 1 events	2219794	2101607	2125248
rejected events	453915	483960	564638
rejected %	20%	23%	26%

2.2 Compared Parameters

Parameter	Planned	Actual	Parameter	Planned	Actual
Instrument	HRC	HRC	Obspar format version number	6	6
Detector	HRC-S	HRC-S	Obspar file type	PREDICTED	ACTUAL
Grating	LETG	LETG	Obspar update status	NONE	UPDATED
Data mode	OBSERVING	OBSERVING			
Observation mode	POINTING	POINTING			
Pointing RA	53.319836	53.31314975313766			
Pointing Dec	-25.895245	-25.86716502763407			
Pointing Roll	69.536057	69.60046834024308			
SIM focus pos (mm)	-1.429586	-1.428180813131781			
SIM defocus (mm)	0.1037507710433287	0.1051558262725154			
SIM translation stage pos (mm)	250.455976	250.466033080201			
SIM translation stage offset (mm)	0	-0.01005468664627074			
Observation start time	86251354.184000	86250915.242929			
Observation start date	2000-09-25T06:41:30	2000-09-25T06:35:15			
Observation end time	86345417.184000	86347233.98405699			
Observation end date	2000-09-26T08:49:13	2000-09-26T09:20:33			

2.3 Aspect



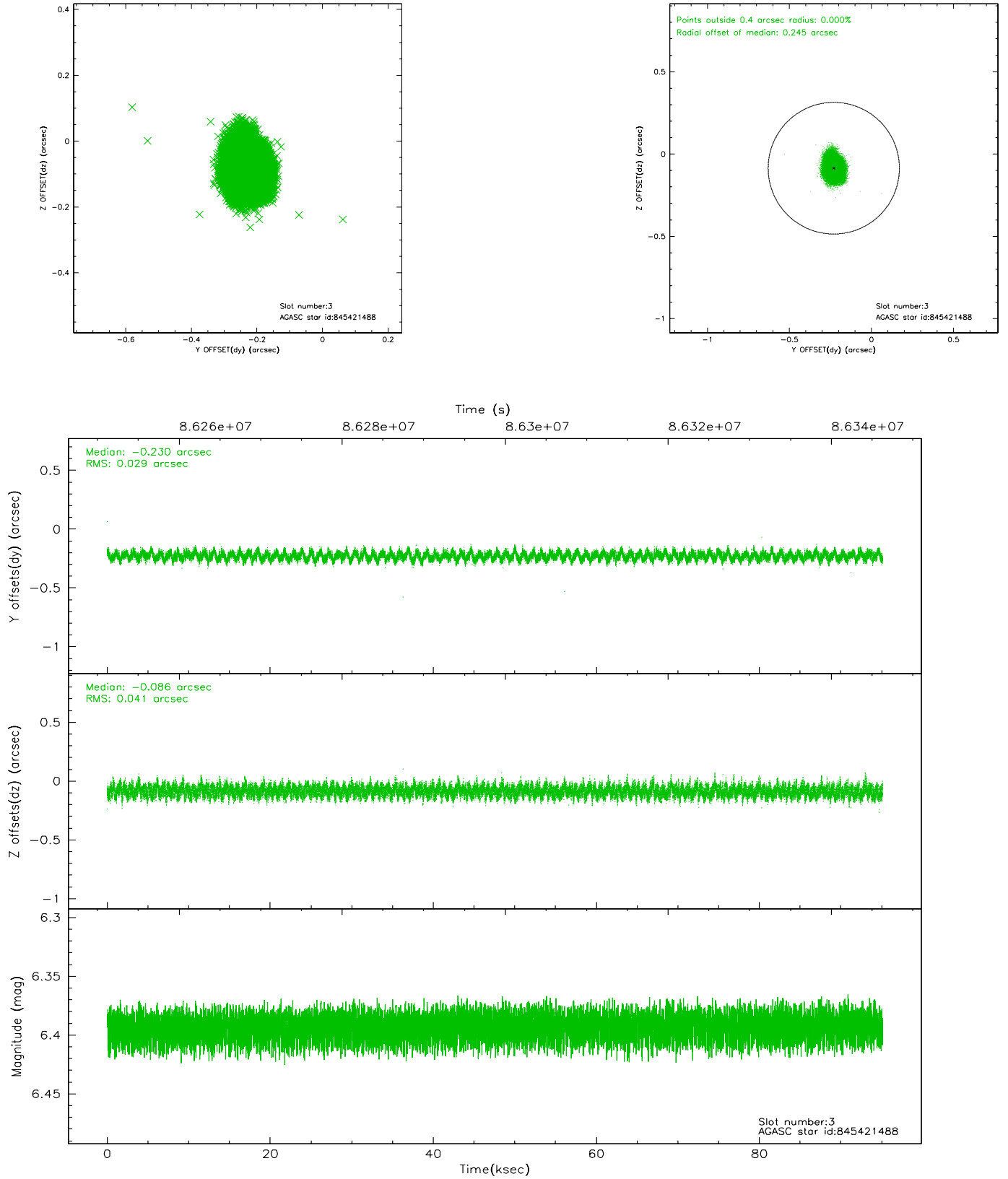


Slot Statistics

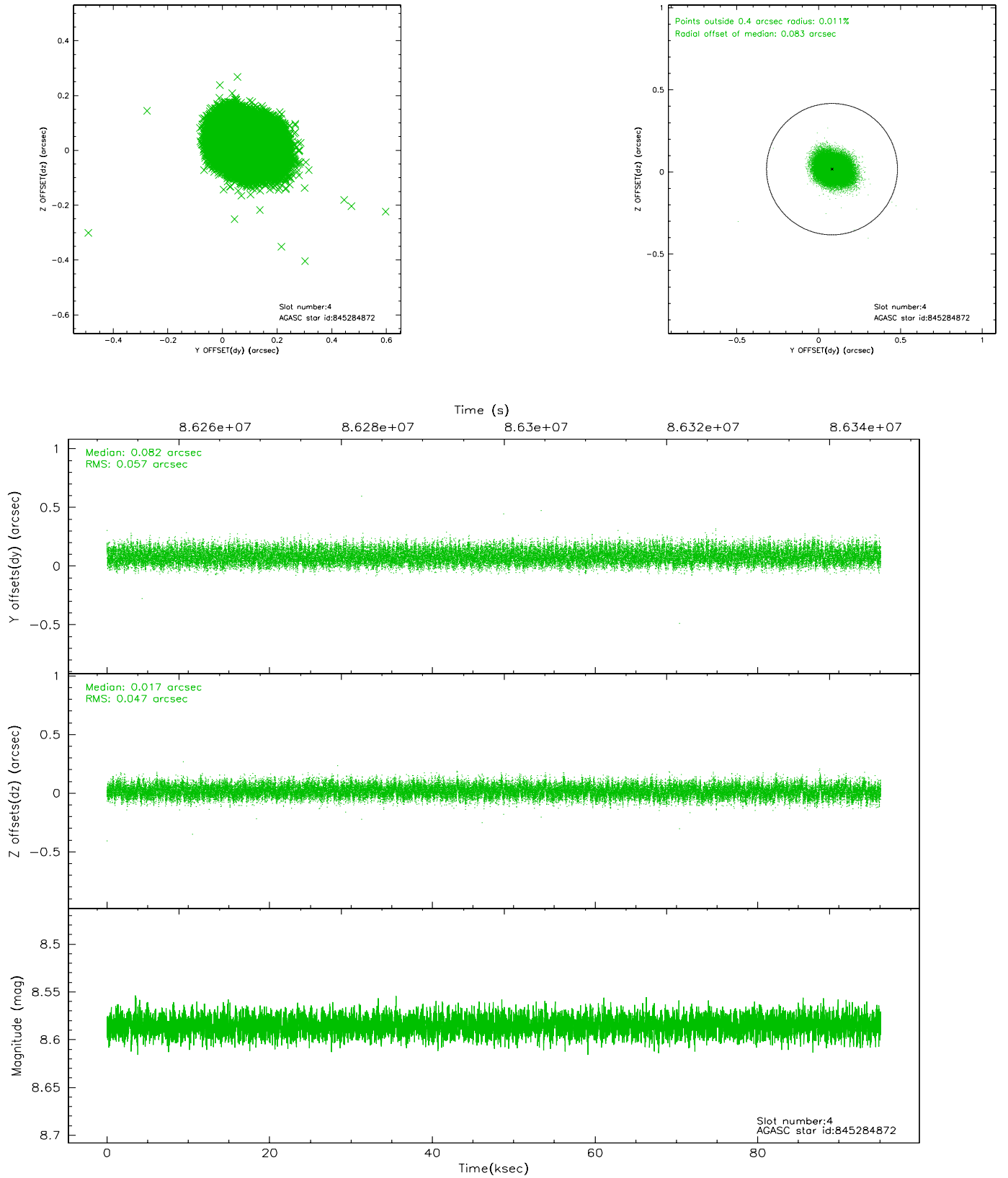
slot	status	id	mag	n_pts	med_dy	med_dz	dr1	dr2	ra	dec	mean_y	mean_z
0	FID	HRC-S-1	6.99	23105	0.117	-0.156	0.019	0.053	0.000000	0.000000	-1157.00	-452.97
1	FID	HRC-S-3	7.01	23102	0.135	-0.047	0.017	0.056	0.000000	0.000000	-1159.76	576.63
2	FID	HRC-S-4	6.96	23102	0.136	-0.094	0.006	0.011	0.000000	0.000000	1241.22	579.22
3	GUIDE	845421488	6.39	46405	-0.230	-0.086	0.054	0.085	53.111135	-25.658502	560.89	932.24
4	GUIDE	845284872	8.59	46401	0.082	0.017	0.079	0.125	52.532199	-26.325582	-2347.28	1836.64
5	GUIDE	845284000	9.05	46305	-0.049	0.005	0.080	0.129	52.995169	-25.542854	818.44	1431.21
6	GUIDE	845414560	9.64	46352	-0.050	0.137	0.114	0.200	53.858079	-26.030821	148.27	-1802.96
7	GUIDE	845420328	9.62	46363	0.247	-0.076	0.108	0.188	53.693663	-25.510959	1719.57	-654.87

2.4 Star Slots

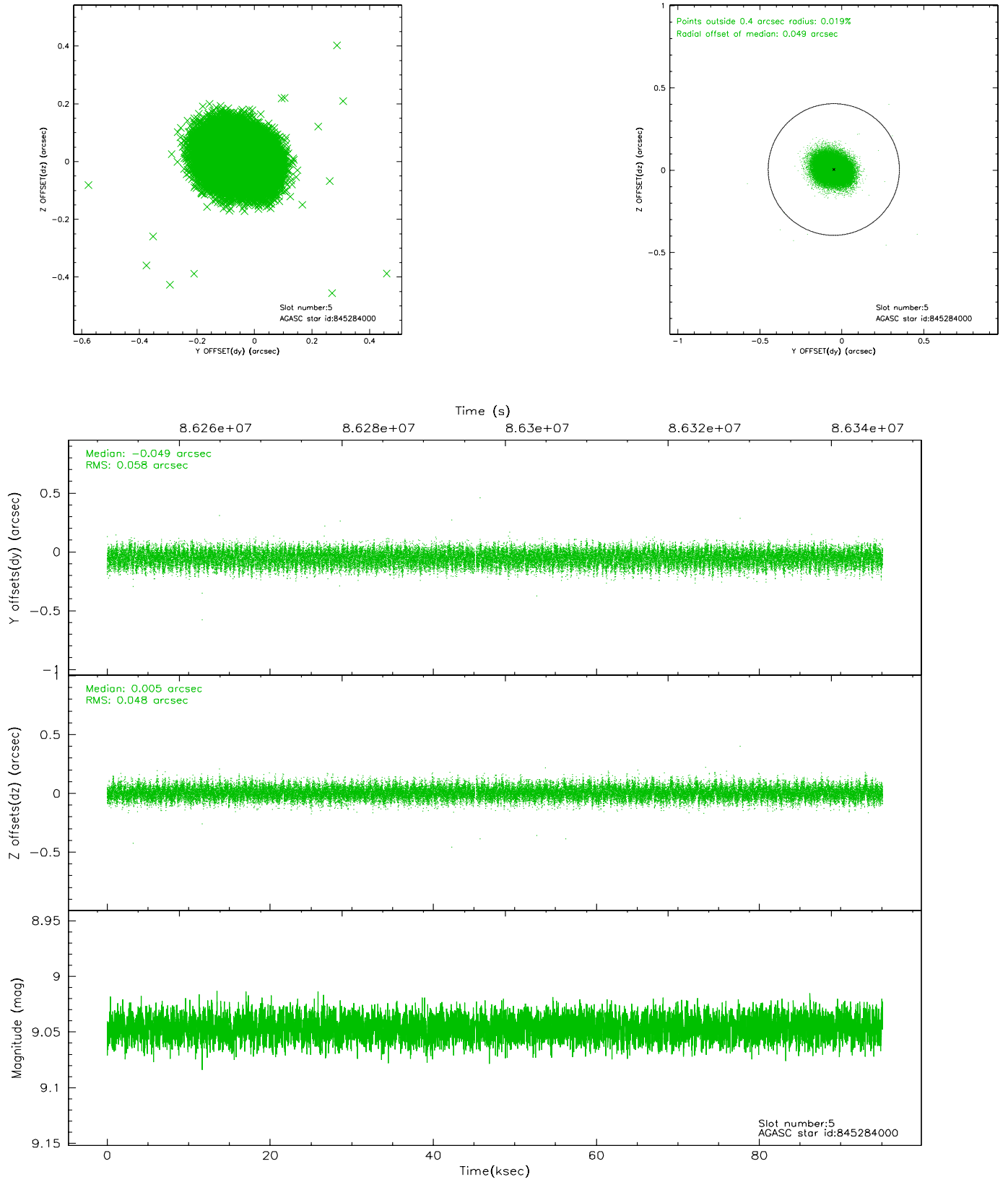
2.4.1 Slot 3



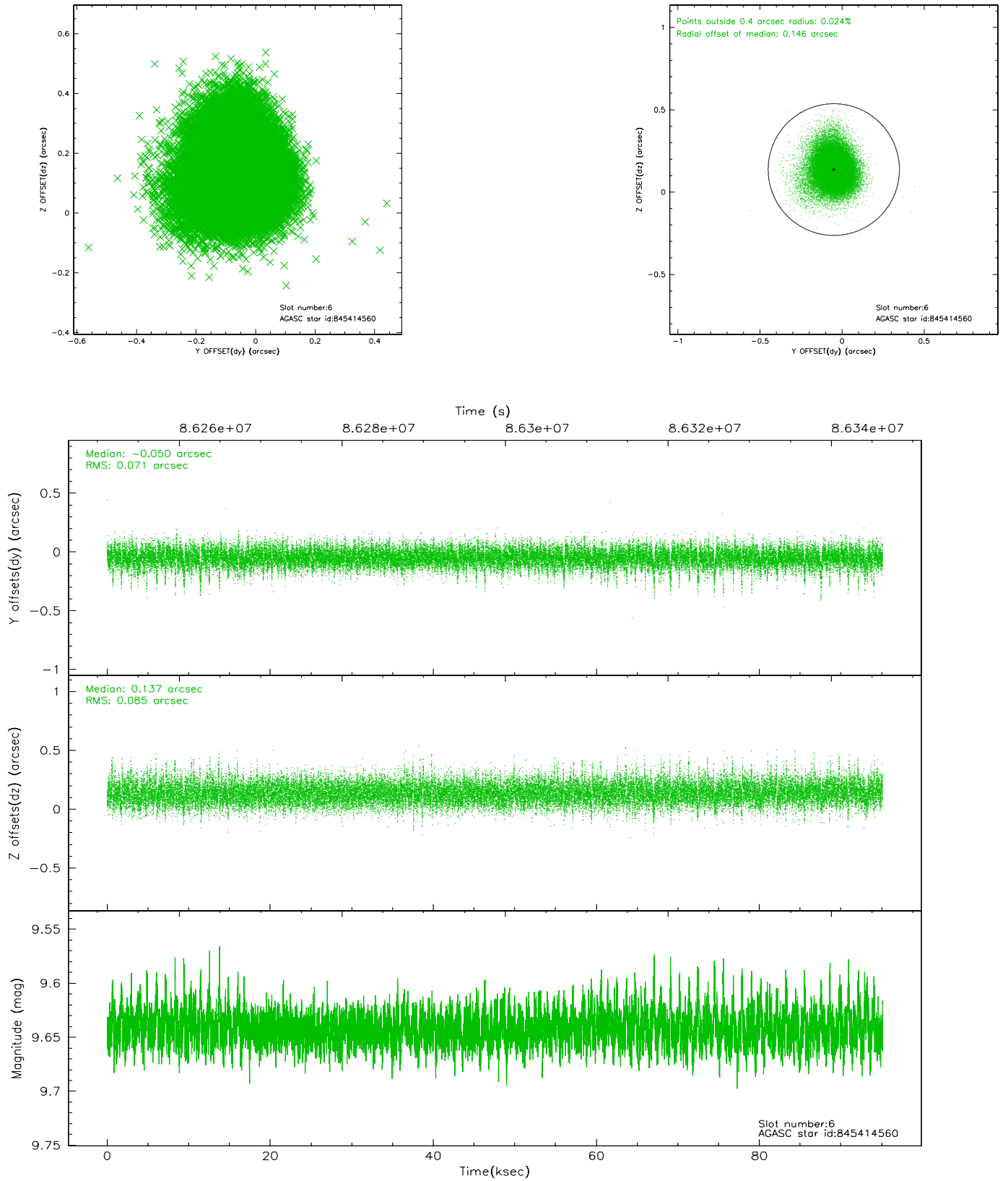
2.4.2 Slot 4



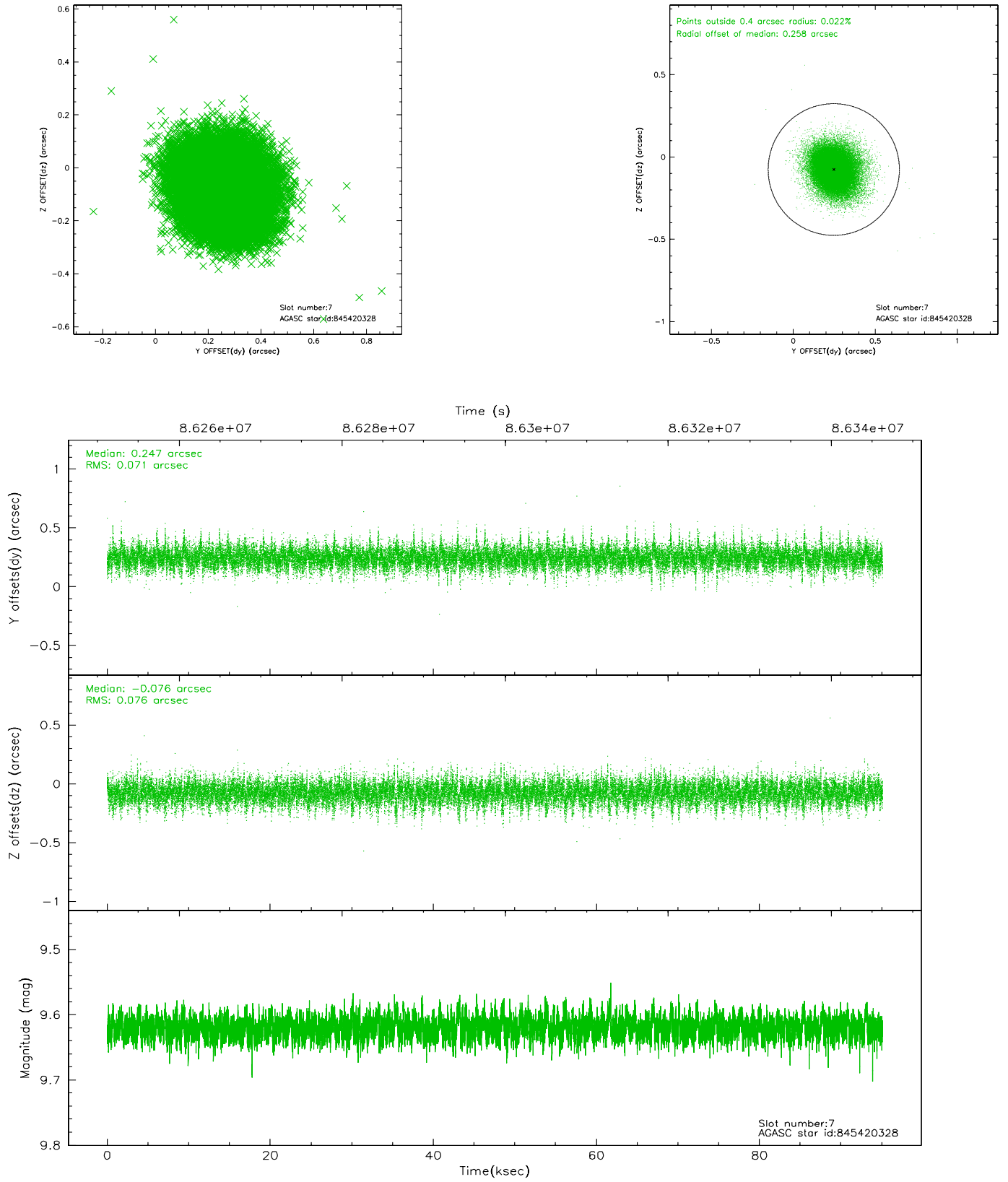
2.4.3 Slot 5



2.4.4 Slot 6

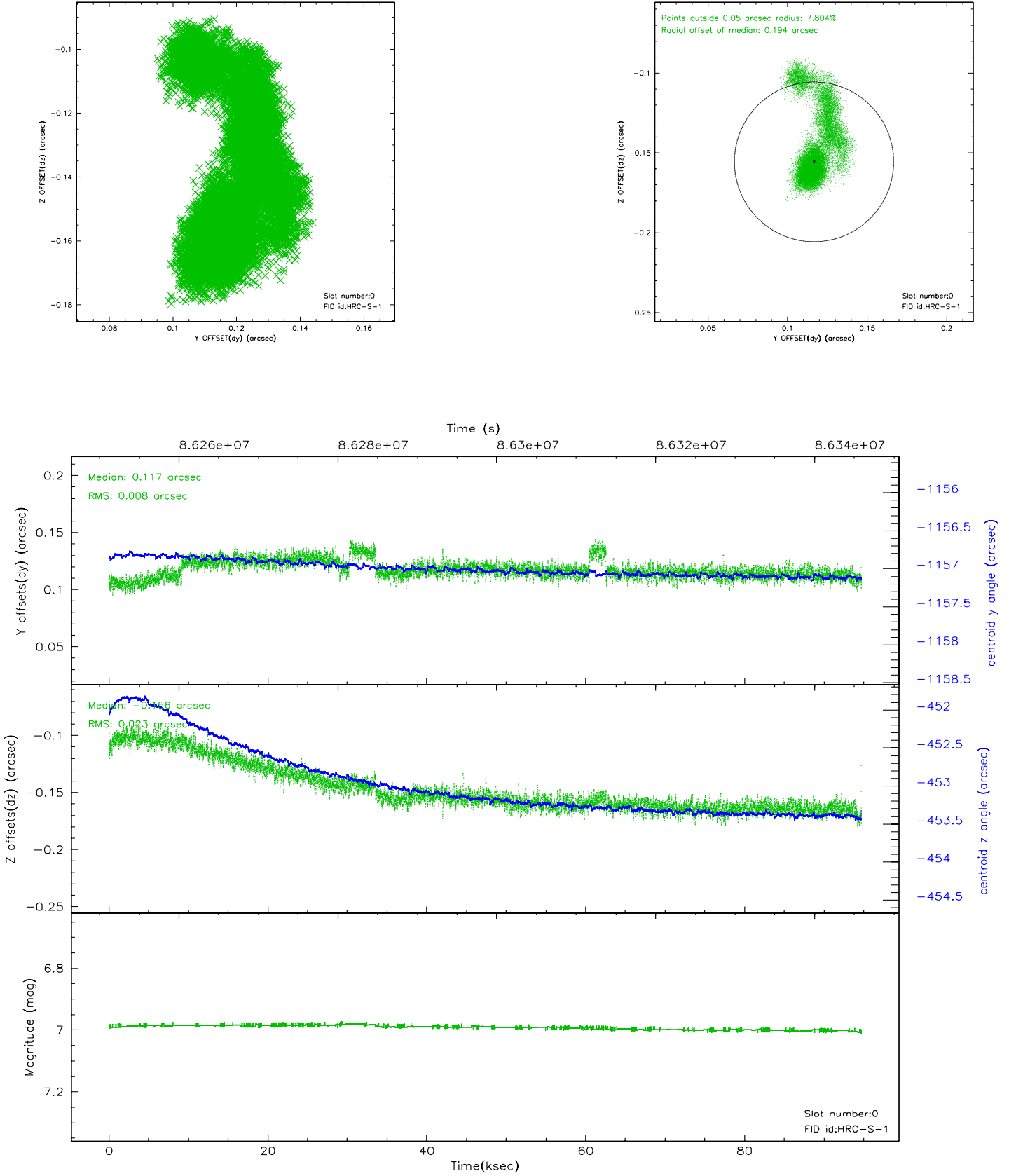


2.4.5 Slot 7

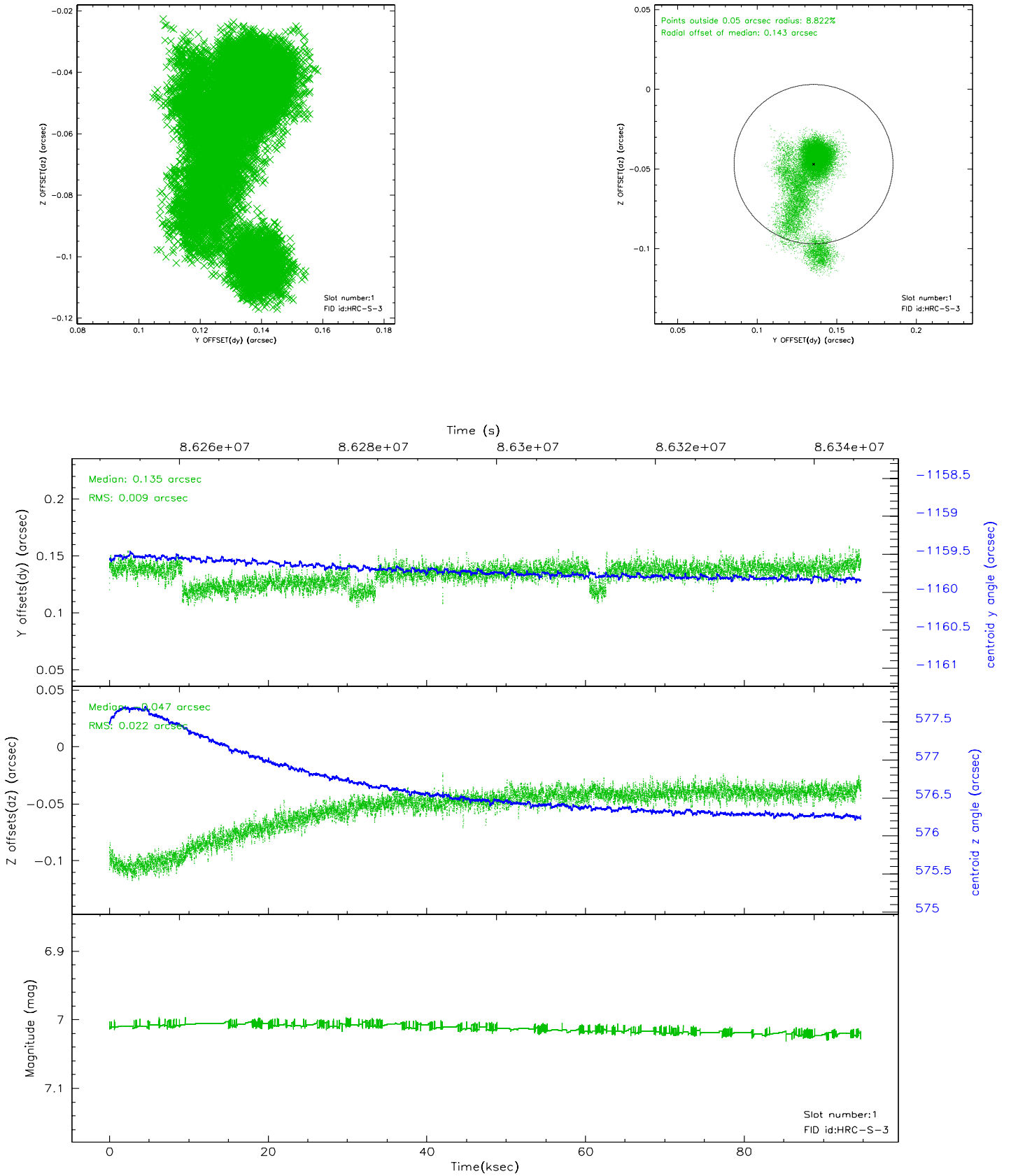


2.5 FID Slots

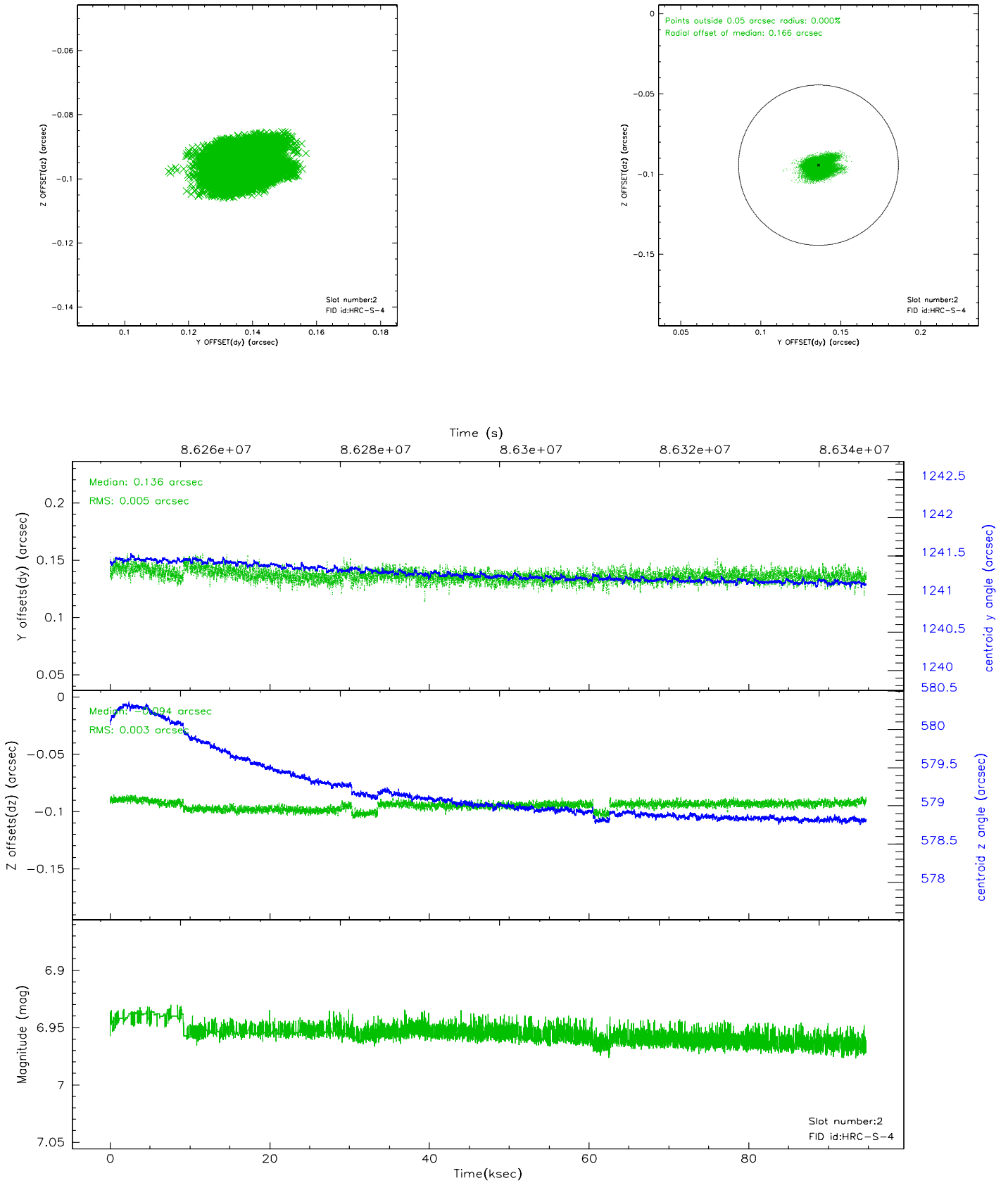
2.5.1 Slot 0



2.5.2 Slot 1

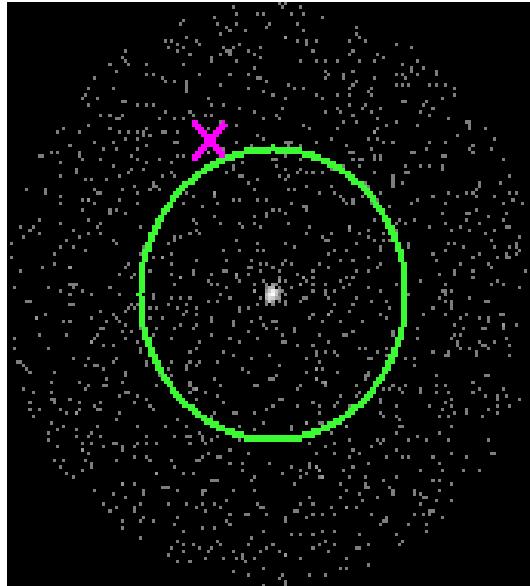


2.5.3 Slot 2

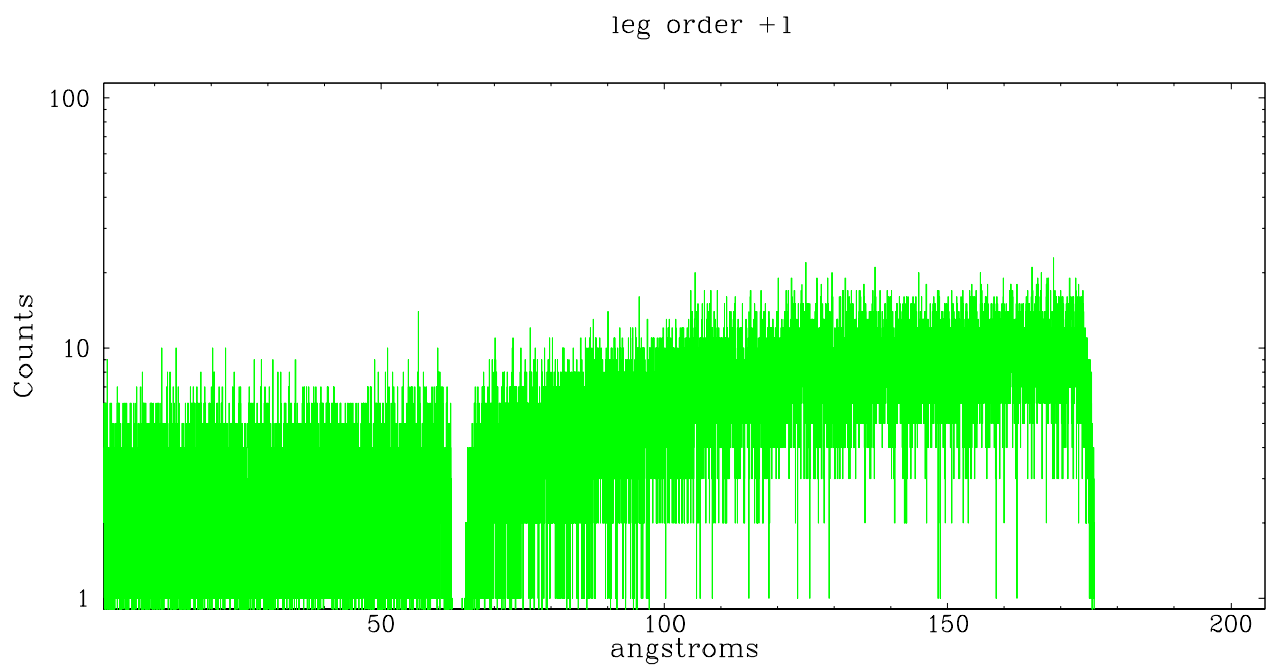
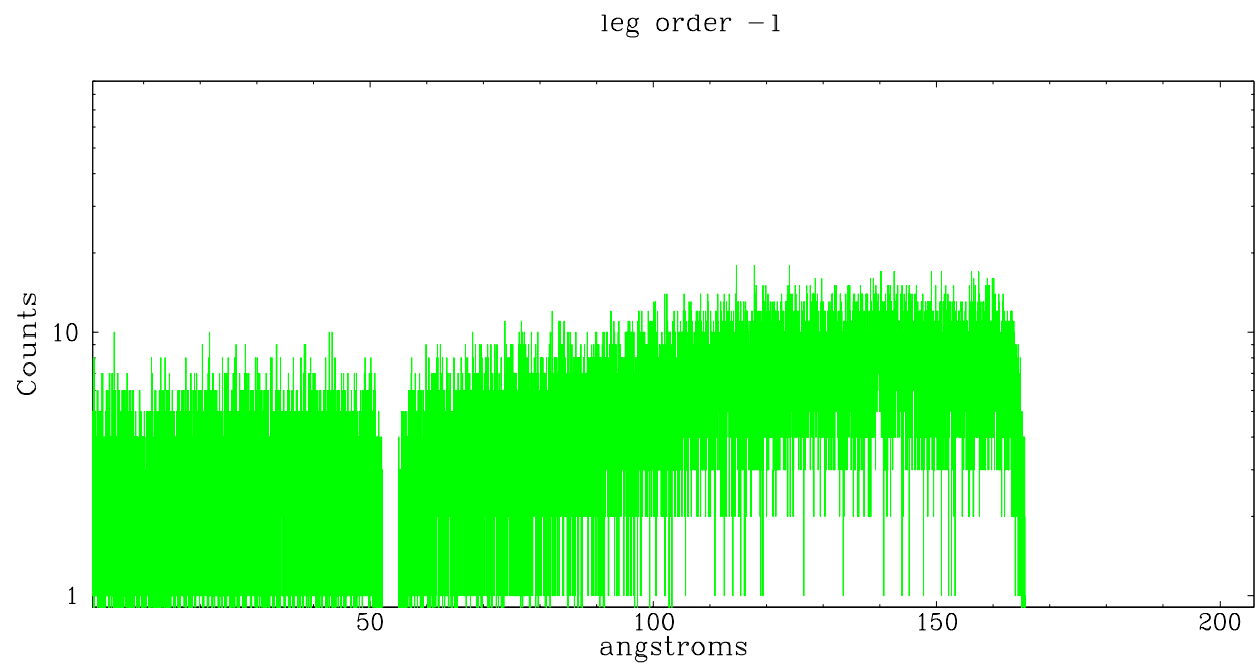


3 Gratings

3.1 LETG Arm



LETG Zero Order



A Summary

A.1 Status

V&V Scientist	Joy Nichols
V&V Date (YYYY-MM-DD)	2007.06.13
V&V Edition	1
V&V Disposition and Status	OK
V&V Charge Time	94.257

A.2 Comments

There are several spikes in count rate during this observation, particularly during the last 15 ksec, due to a high radiation environment. The dead time factor (DTF) reflects these spikes in count rate.