

V&V Reference Report

L2 ASCDS Version : 8.4.5

Observation 1768 - L2 Version 4
Chandra X-Ray Center

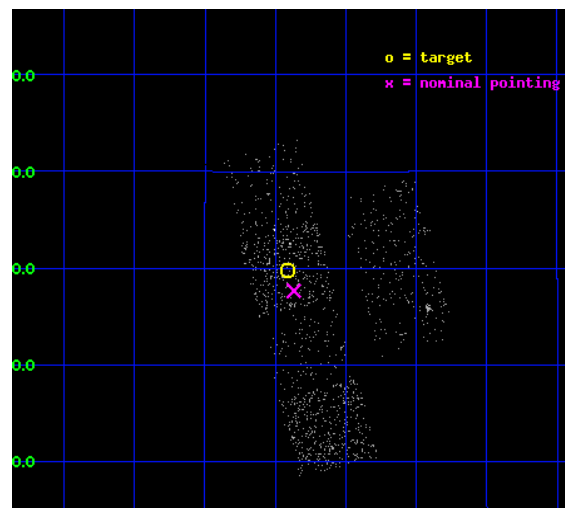
L2 Processing Date : Aug 31 2012

Contents

1	Front	2
2	OBI	3
2.1	OBI	3
2.1.1	Images	3
2.1.2	Bias	3
2.1.3	Parameters	4
2.1.4	Events	4
2.2	Compared Parameters	5
2.3	Aspect	6
2.4	Star Slots	9
2.4.1	Slot 3	9
2.4.2	Slot 4	10
2.4.3	Slot 5	11
2.4.4	Slot 6	12
2.4.5	Slot 7	13
2.5	FID Slots	14
2.5.1	Slot 0	14
2.5.2	Slot 1	15
2.5.3	Slot 2	16
A	Summary	17
A.1	Status	17
A.2	Comments	17

1 Front

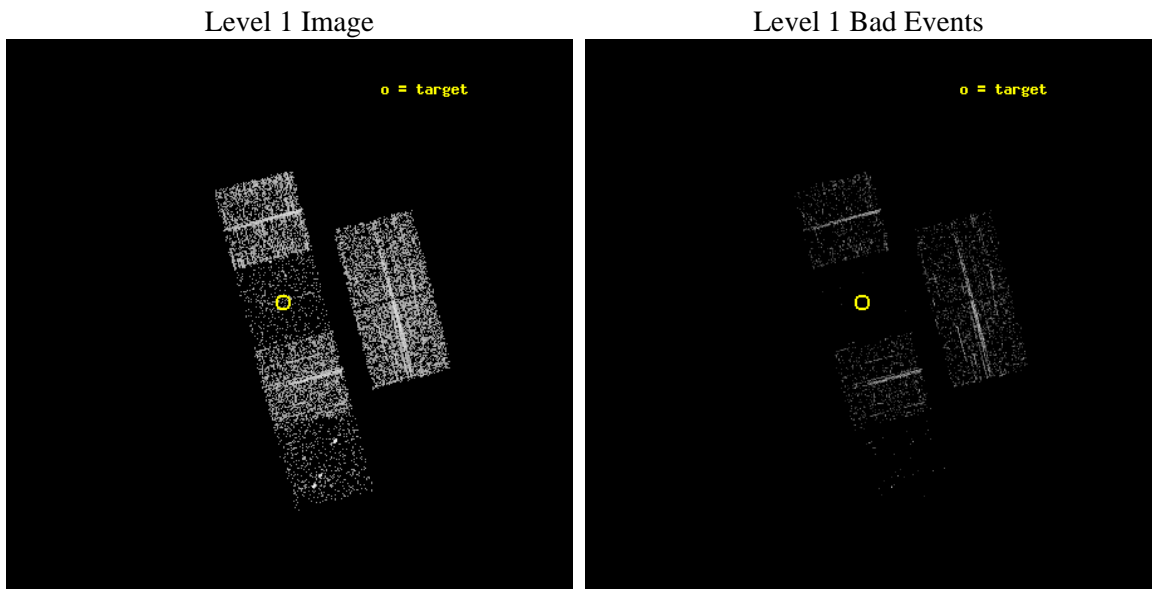
seq_num	100004	Sequence number
obs_id	1768	Observation id
title	AXAF LOW ENERGY SPECTROSCOPY AND PHOTOMETRIC IMAGING OF COMETARY X-RAY EMISSION FROM COMET P/TEMPEL 2	Proposal title
observer	Dr. Carey Lisse	Principal investigator
object	Comet c/LINEAR 1999 S4	Source name
dtcycle	0	
cycle	P	events from which exps? Prim/Second/Both
ra_targ	182.60351	Observer's specified target RA [deg]
dec_targ	10.49697	Observer's specified target Dec [deg]
ra_nom	182.59211006368	Nominal RA [deg]
dec_nom	10.461114284893	Nominal Dec [deg]
roll_nom	255.62859276804	Nominal Roll [deg]
revision	4	Processing version of data
ontime	1203.2000011057	Sum of GTIs [s]
livetime	1187.9643582116	Livetime [s]
ontime2	1203.2000011057	Sum of GTIs [s]
ontime3	1203.2000011057	Sum of GTIs [s]
ontime5	1203.2000011057	Sum of GTIs [s]
ontime6	1203.2000011057	Sum of GTIs [s]
ontime7	1203.2000011057	Sum of GTIs [s]
ontime8	1203.2000011057	Sum of GTIs [s]
l2events	1460	Number of level 2 events



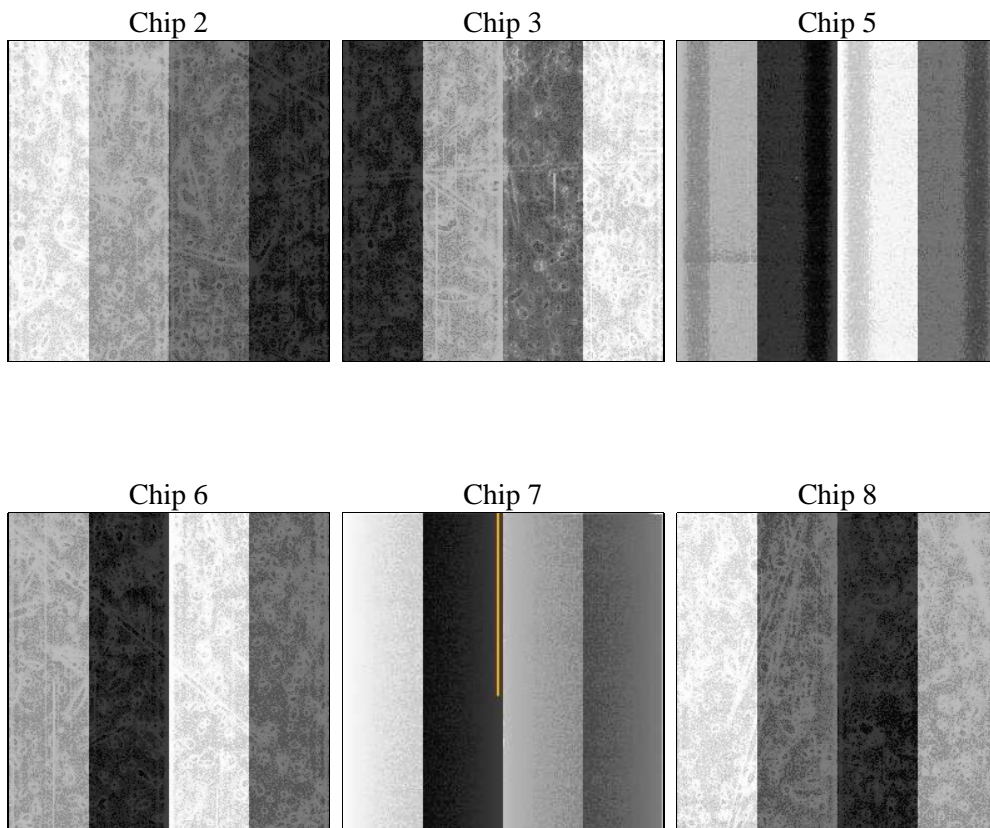
2 OBI

2.1 OBI

2.1.1 Images



2.1.2 Bias



2.1.3 Parameters

obi_num	0	Obi number	sched_exp_time	1270.000000	[s] Scheduled observation exposure time
ascdsver	8.4.5	Processing system revision	ontime	1203.2000011057	Sum of GTIs [s]
caldsver	4.5.1.1	 	ontime2	1203.2000011057	Sum of GTIs [s]
date	2012-08-31T12:02:38	Date and time of file creation	ontime3	1203.2000011057	Sum of GTIs [s]
revision	3	Processing version of data	ontime5	1203.2000011057	Sum of GTIs [s]
			ontime6	1203.2000011057	Sum of GTIs [s]
			ontime7	1203.2000011057	Sum of GTIs [s]
			ontime8	1203.2000011057	Sum of GTIs [s]
			l1events	23999	Number of level 1 events

2.1.4 Events

	ccd 2	ccd 3	ccd 5	ccd 6	ccd 7	ccd 8
level 1 events	6604	4835	1302	4868	791	5599
rejected events	6368	4680	412	4705	220	4628
rejected %	96%	96%	31%	96%	27%	82%

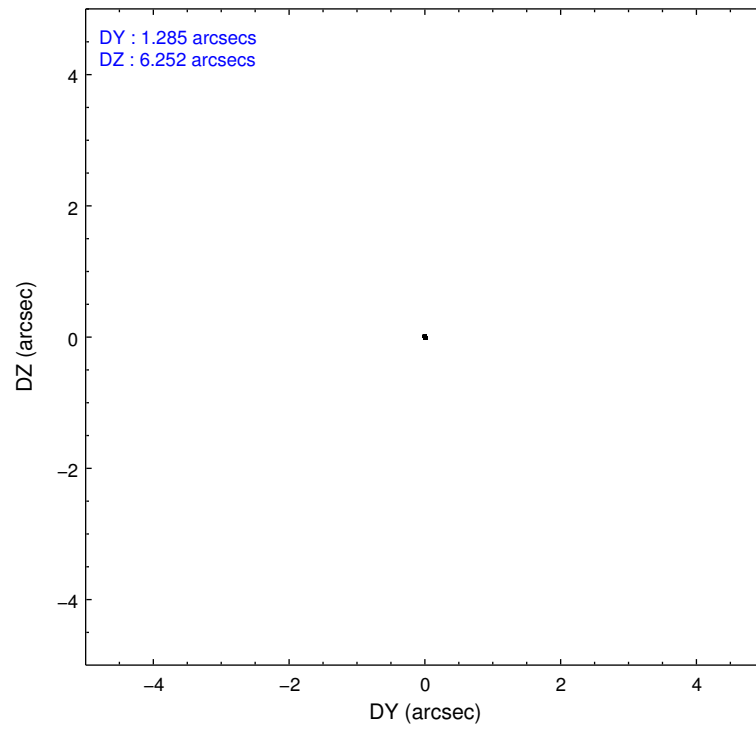
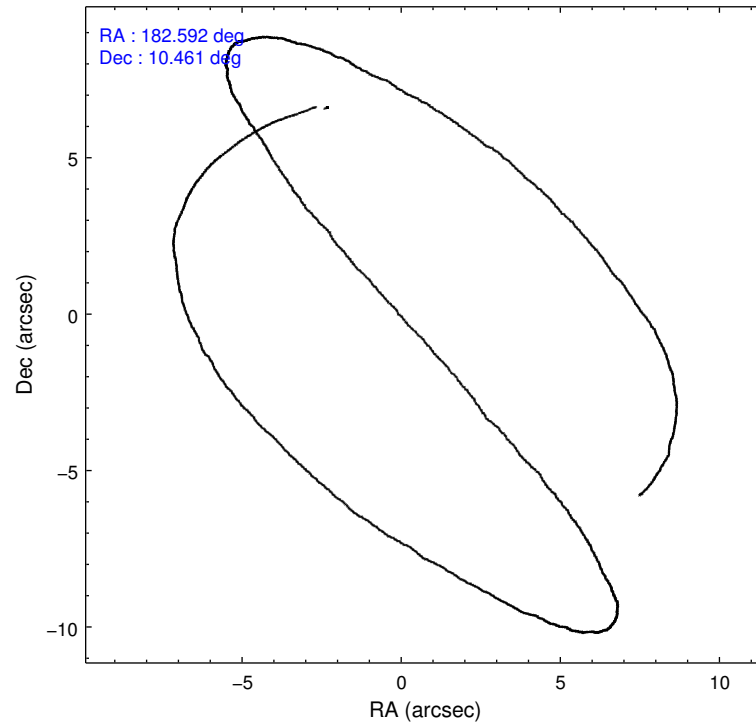
	ccd 2	ccd 3	ccd 5	ccd 6	ccd 7	ccd 8
grade 0 events	138	94	545	112	232	305
	2%	1%	41%	2%	29%	5%
grade 1 events	2	1	18	1	0	2
	0%	0%	1%	0%	0%	0%
grade 2 events	60	17	328	24	210	230
	0%	0%	25%	0%	26%	4%
grade 3 events	27	33	74	38	95	131
	0%	0%	5%	0%	12%	2%
grade 4 events	37	27	67	38	100	148
	0%	0%	5%	0%	12%	2%
grade 5 events	7	2	38	3	12	24
	0%	0%	2%	0%	1%	0%
grade 6 events	17	17	61	14	73	372
	0%	0%	4%	0%	9%	6%
grade 7 events	6316	4644	171	4638	69	4387
	95%	96%	13%	95%	8%	78%

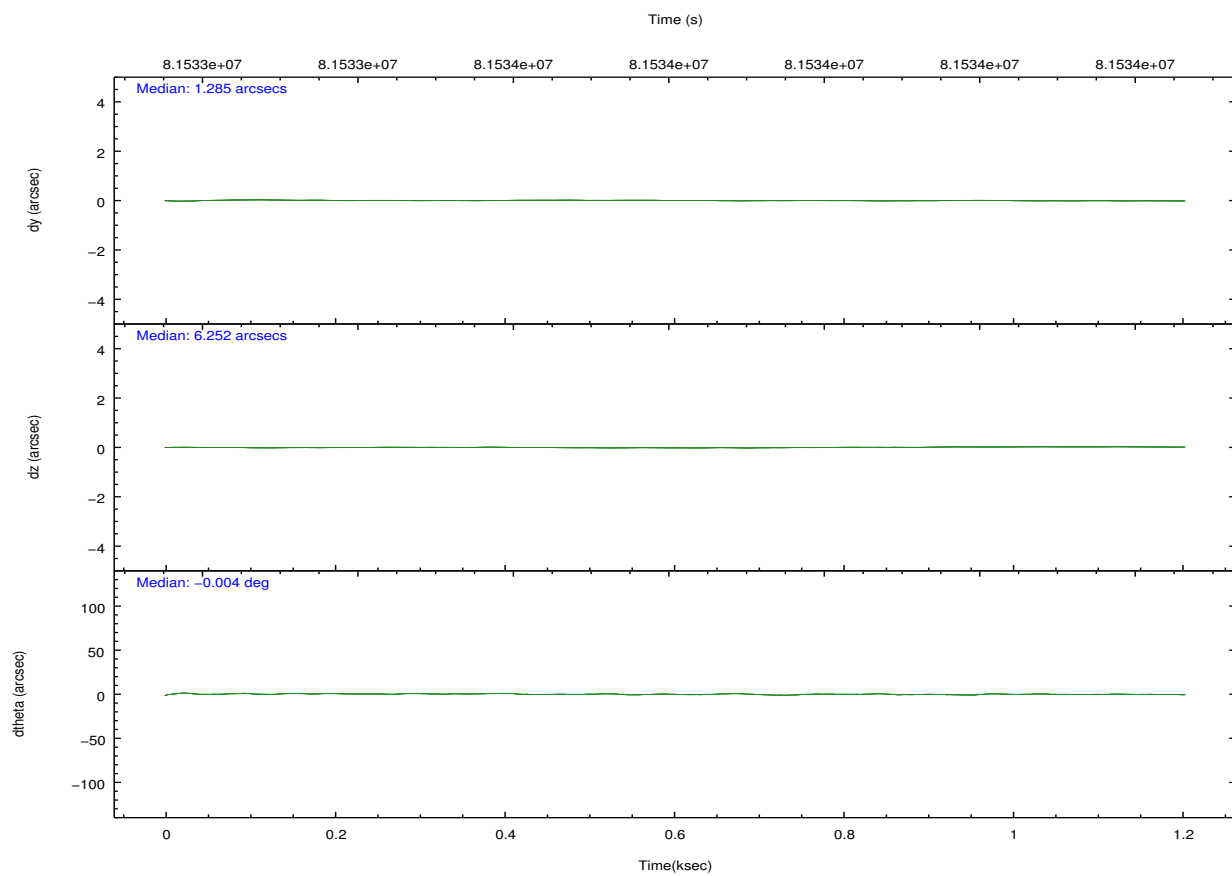
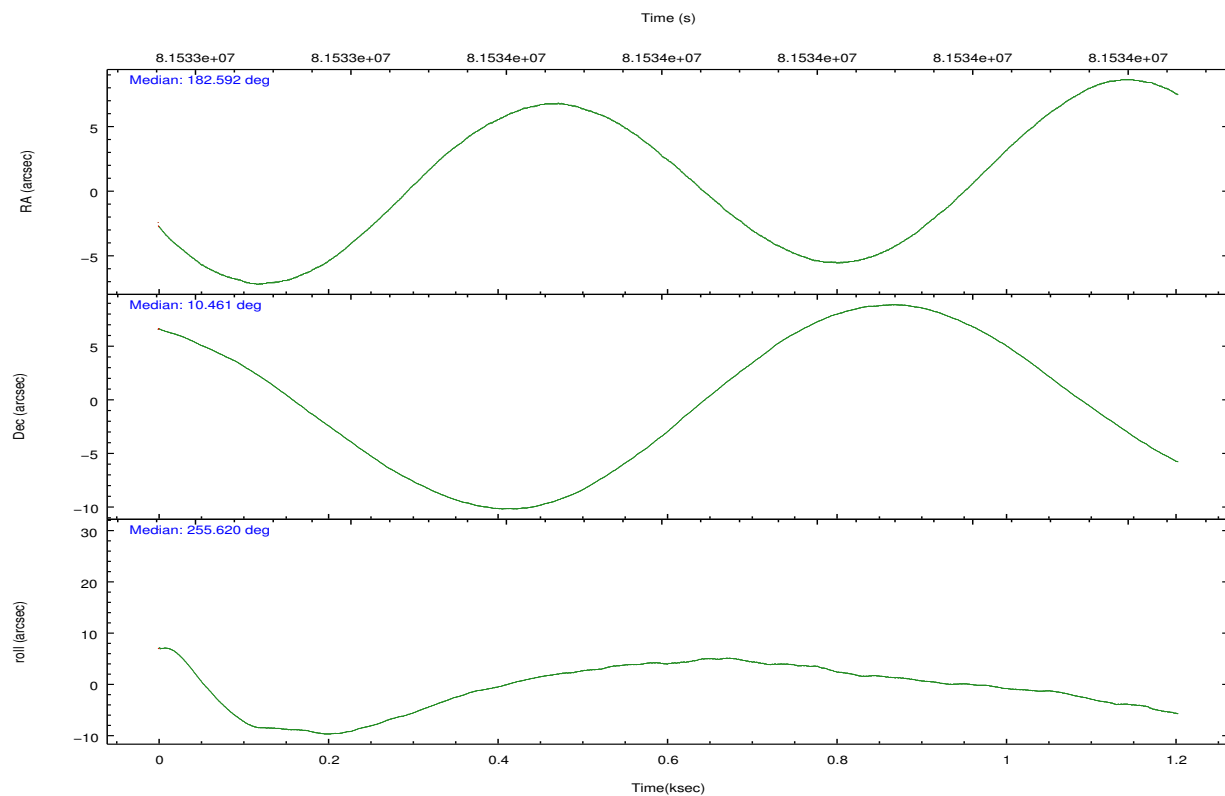
2.2 Compared Parameters

Parameter	Planned	Actual
Instrument	ACIS	ACIS
Detector	ACIS-235678	ACIS-235678
Grating	NONE	NONE
Data mode	VFAINT	VFAINT
Observation mode	POINTING	POINTING
[deg] Pointing RA	182.584513	182.592110063683
[deg] Pointing Dec	10.487354	10.46111428489263
[deg] Pointing Roll	255.473291	255.6285927680405
[mm] SIM focus pos	-0.684267	-0.6828225247311905
[mm] SIM defocus	0	0.001444936568705701
[mm] SIM translation stage pos	-190.132523	-190.1425803651734
[mm] SIM translation stage offset	0	0.01005778216563158
[s] Observation start time (MET)	81533140.184000	81533034.30355801
Observation start date	2000-08-01T16:04:36	2000-08-01T16:03:54
[s] Observation end time (MET)	81534410.184000	81534544.12861501
Observation end date	2000-08-01T16:25:46	2000-08-01T16:29:04
Read mode	TIMED	TIMED

Parameter	Planned	Actual
Obspar format version number	7	7
Obspar file type	PREDICTED	ACTUAL
Obspar update status	NONE	UPDATED
Number of optional ACIS chips dropped	0	0
On-chip summing requested	N	N
Subarray requested	NONE	NONE
Alternating exposures requested	N	N
[s] Primary exposure time	0.000000	3.2

2.3 Aspect



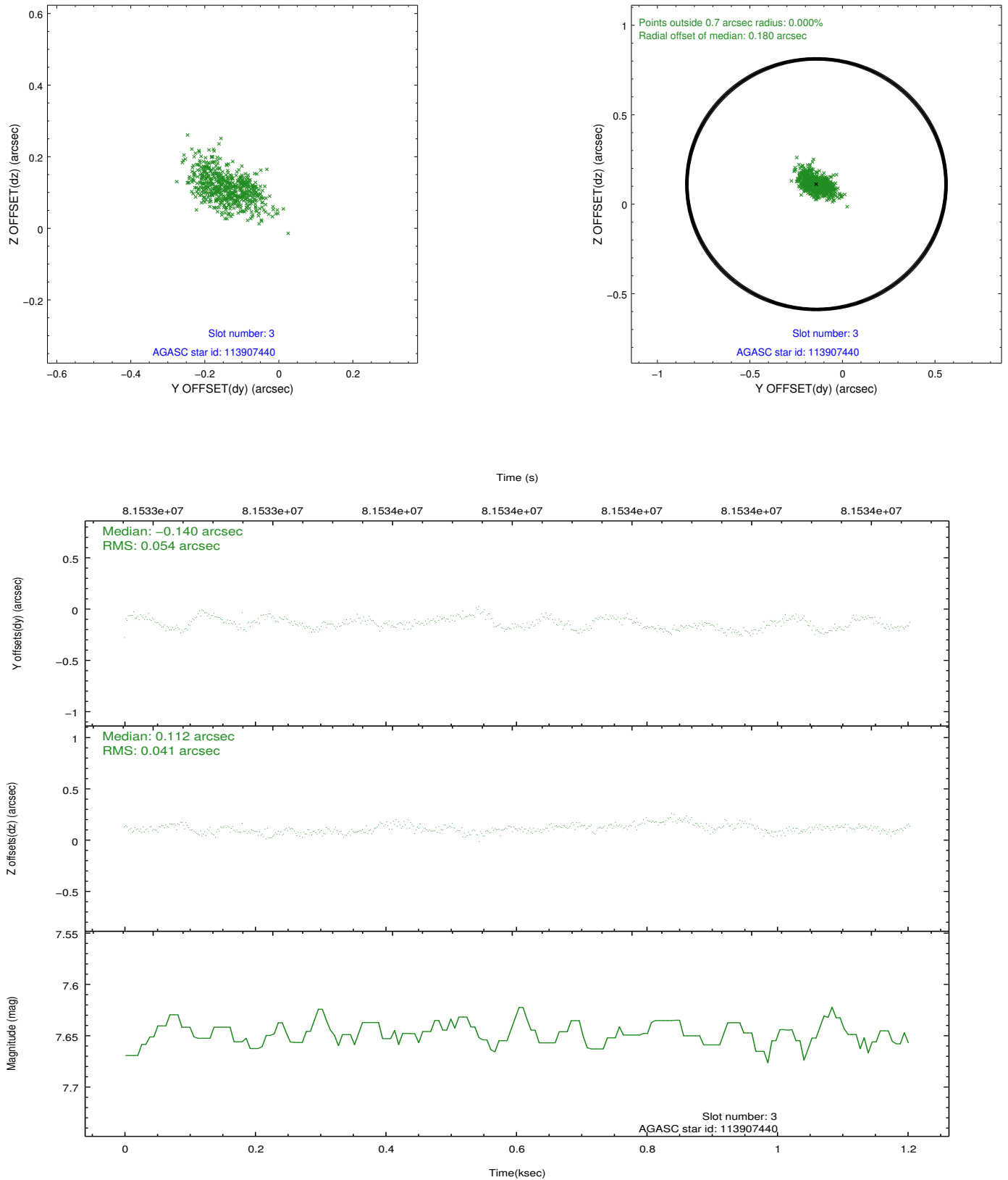


Slot Statistics

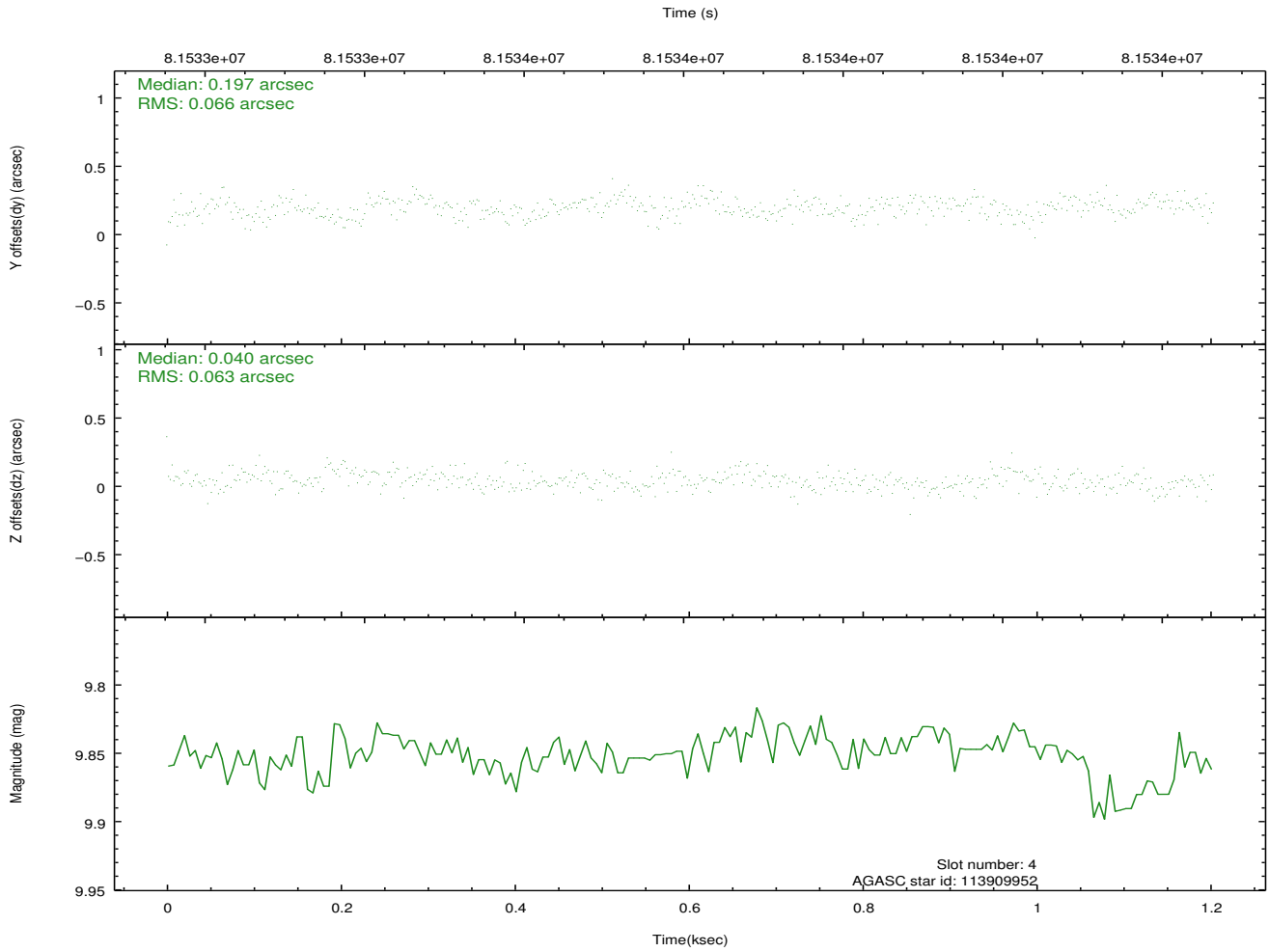
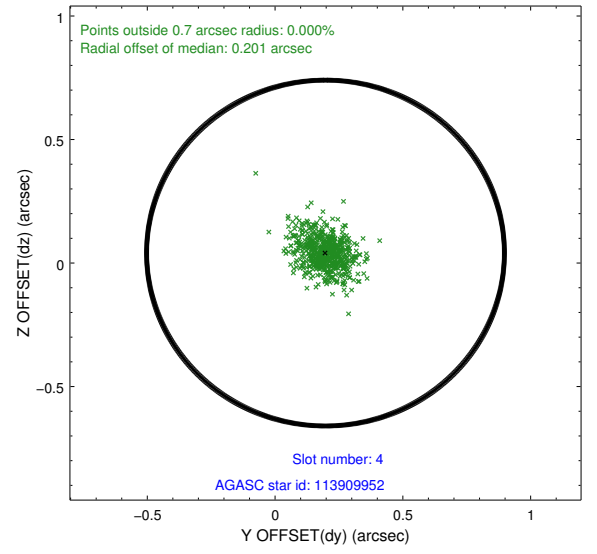
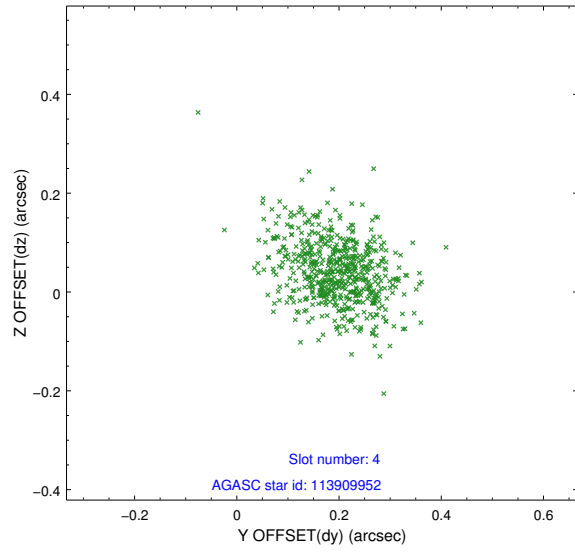
slot	status	id	mag	n_pts	med_dy	med_dz	dr1	dr2	ra	dec	mean_y	mean_z
0	FID	ACIS-S-2	7.11	294	-0.041	0.001	0.009	0.015	0.000000	0.000000	-753.91	-1727.35
1	FID	ACIS-S-4	7.21	294	-0.004	0.020	0.013	0.022	0.000000	0.000000	2156.90	175.45
2	FID	ACIS-S-5	7.24	294	0.014	-0.013	0.009	0.016	0.000000	0.000000	-1799.57	175.37
3	GUIDE	113907440	7.65	588	-0.140	0.112	0.072	0.117	183.304663	10.821652	-1805.85	2162.21
4	GUIDE	113909952	9.85	588	0.197	0.040	0.094	0.160	182.703120	10.082649	1302.78	776.09
5	GUIDE	113905264	10.17	587	0.126	-0.062	0.124	0.211	182.445692	10.343633	627.38	-345.03
6	GUIDE	113910808	10.24	588	-0.029	-0.032	0.140	0.225	183.289541	10.594003	-998.57	2317.11
7	GUIDE	113908616	8.67	587	-0.170	-0.064	0.074	0.118	182.402585	11.211583	-2363.69	-1272.66

2.4 Star Slots

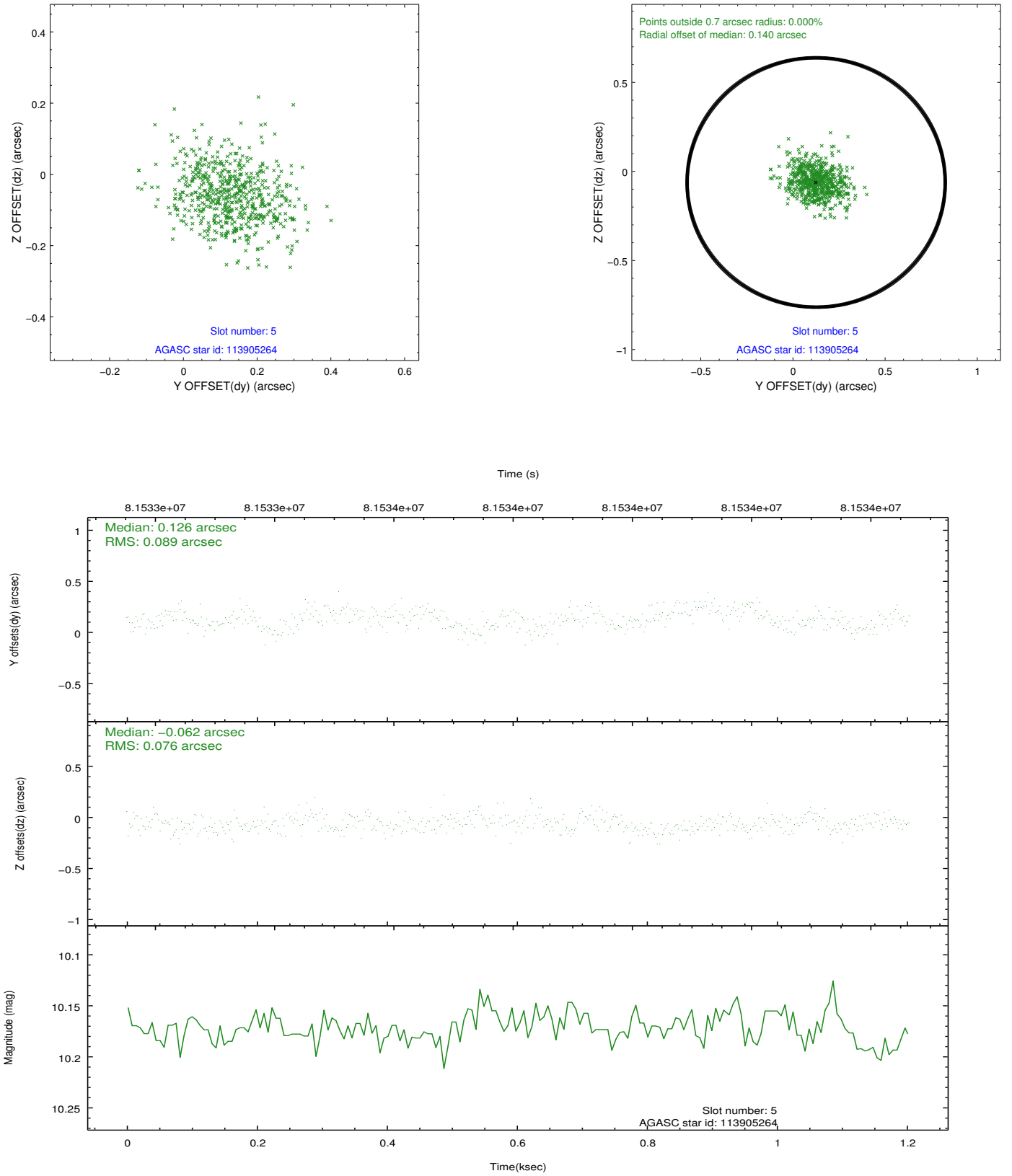
2.4.1 Slot 3



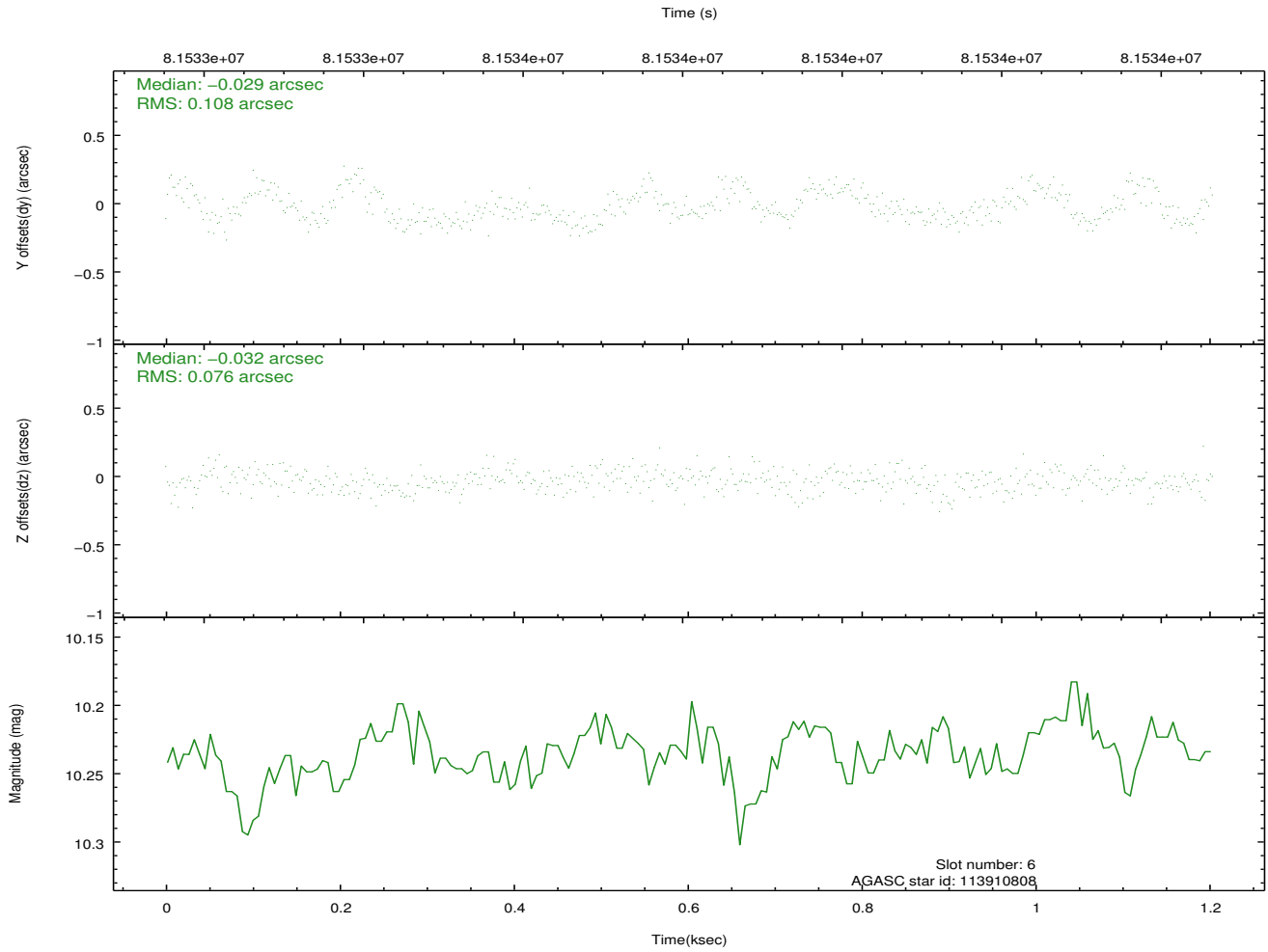
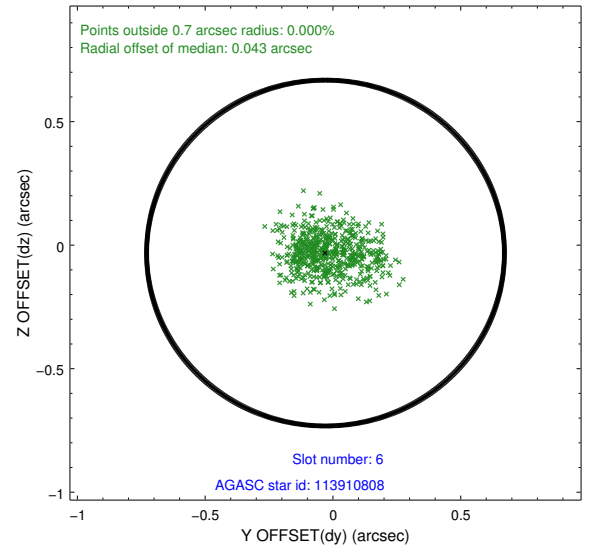
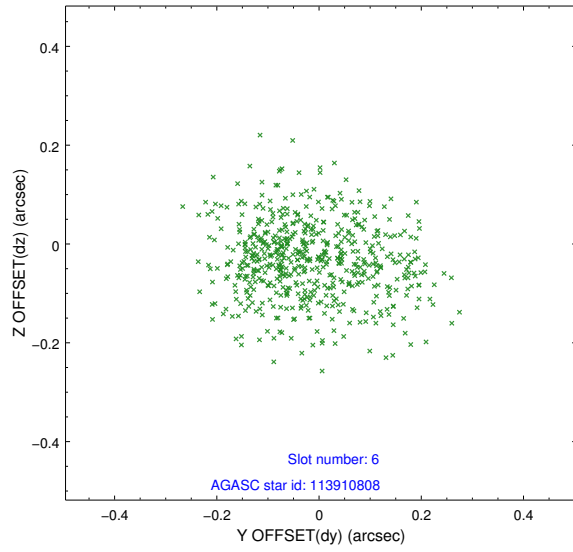
2.4.2 Slot 4



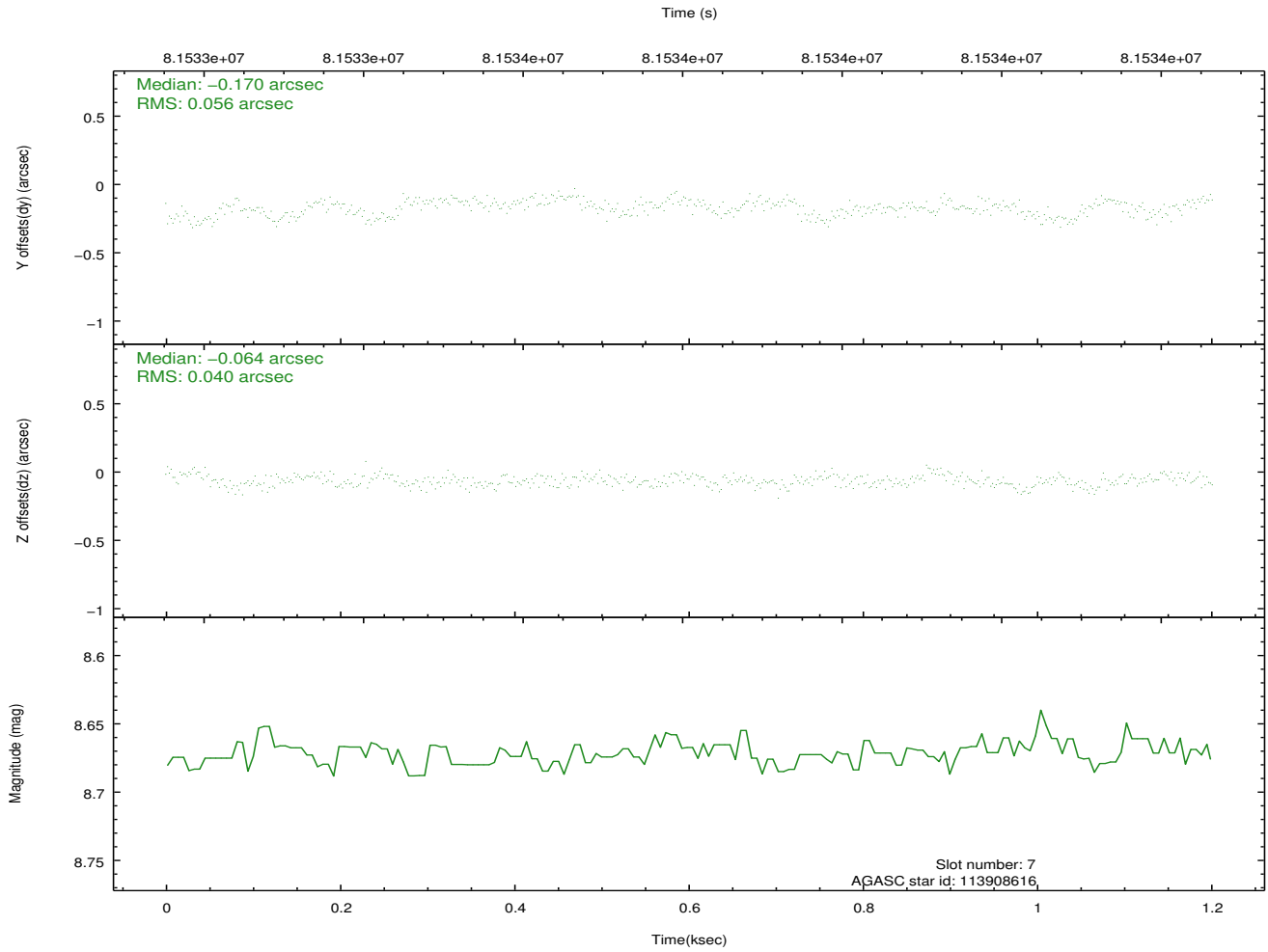
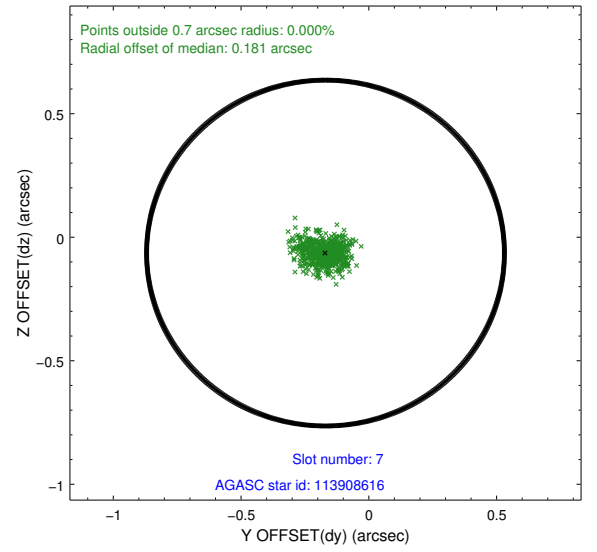
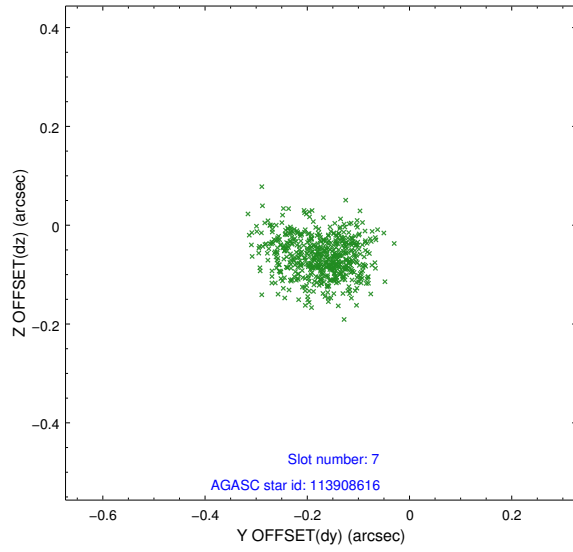
2.4.3 Slot 5



2.4.4 Slot 6

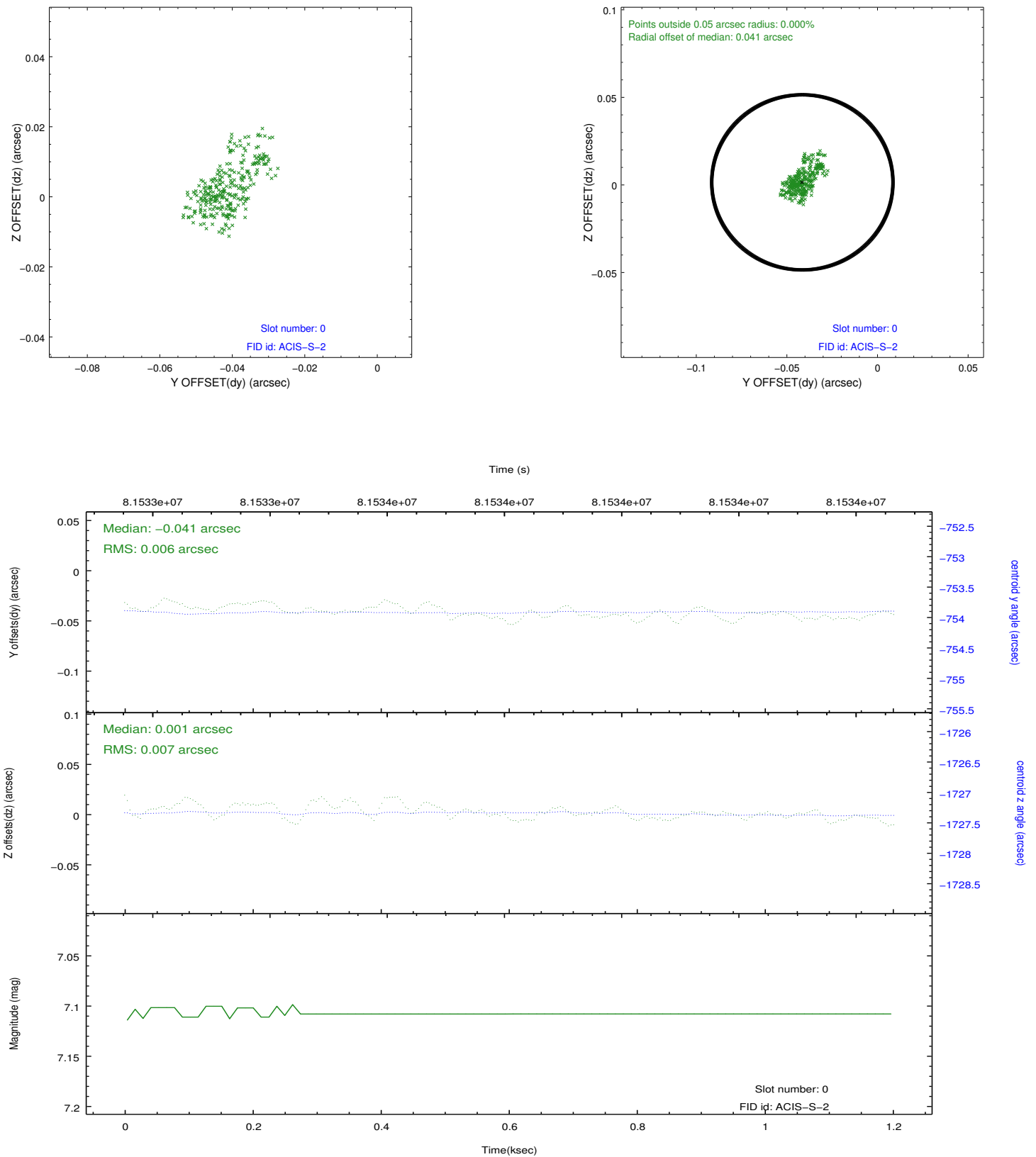


2.4.5 Slot 7

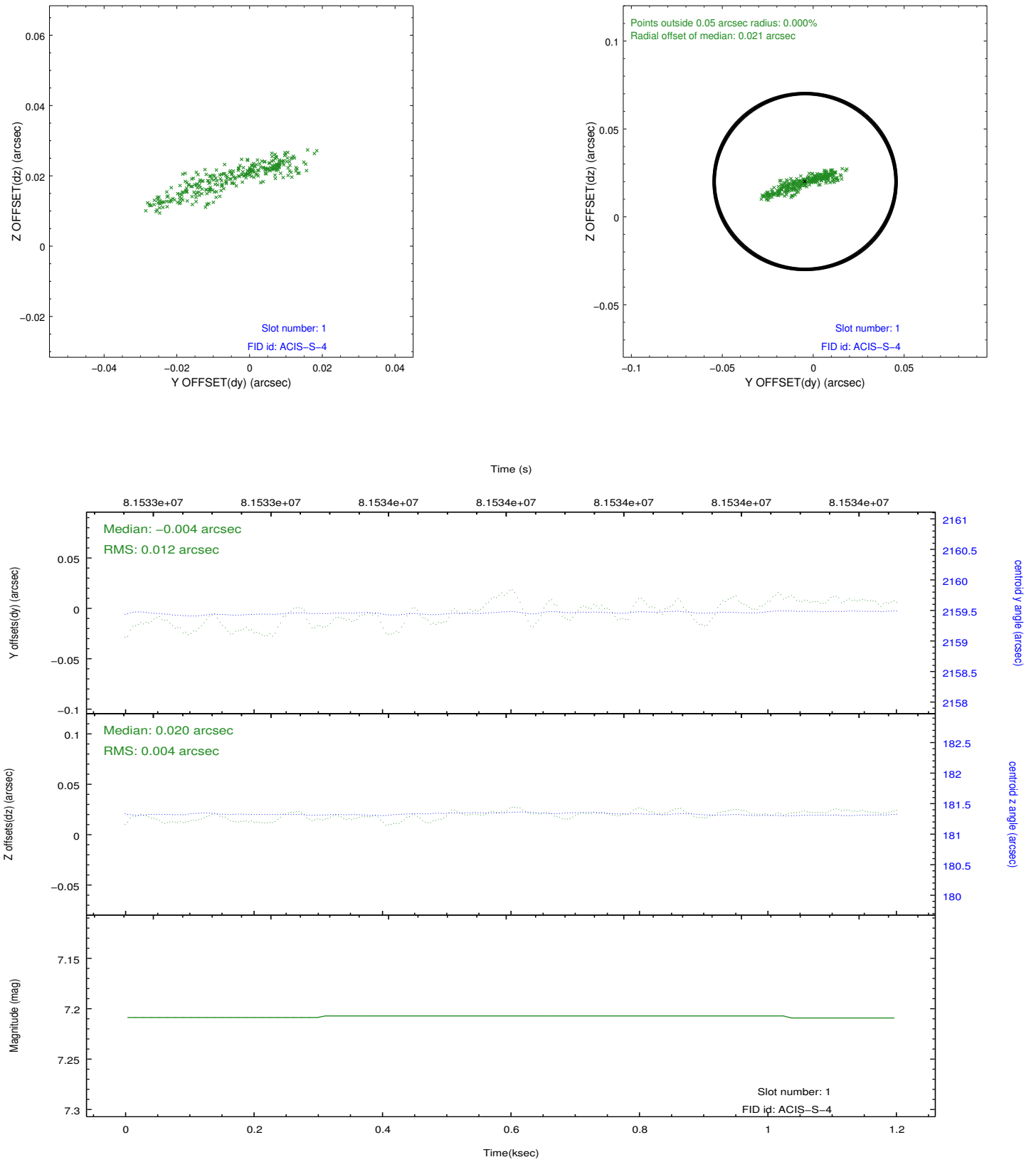


2.5 FID Slots

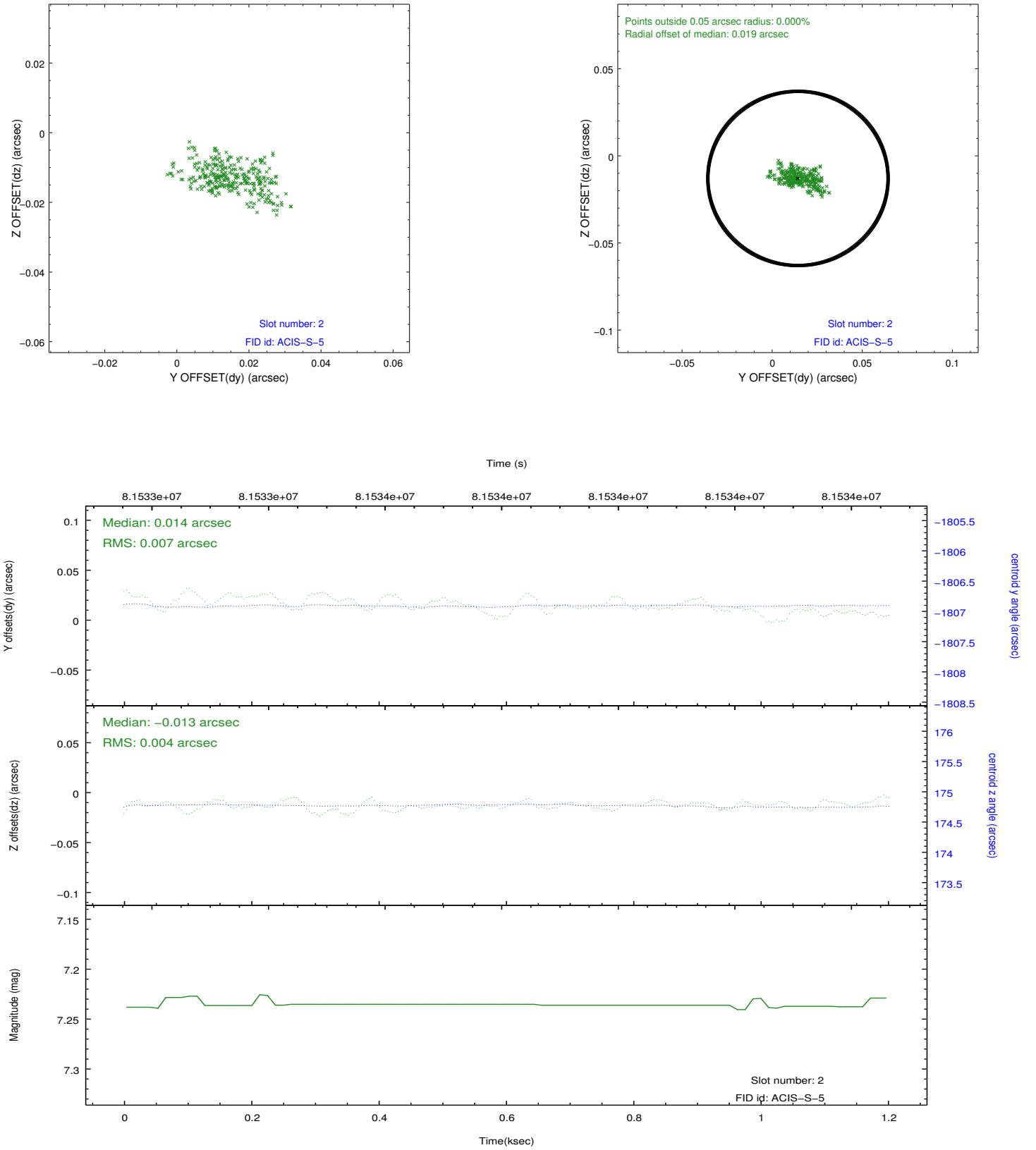
2.5.1 Slot 0



2.5.2 Slot 1



2.5.3 Slot 2



A Summary

A.1 Status

V&V Scientist	Beth Sundheim
V&V Date (YYYY-MM-DD)	2012.10.11
V&V Edition	1
V&V Disposition and Status	OK
V&V Charge Time	1.203

A.2 Comments

This is an observation of a moving target. Event positions are in the reference frame of Chandra, not of the comet. Users should run a software tool such as `sso_freeze` to reposition the events in the reference frame of the comet, then run normal data analysis tools.