

V&V Reference Report

L2 ASCDS Version : 8.5.1.1

Observation 53986 - L2 Version 1
Chandra X-Ray Center

L2 Processing Date : Jan 31 2013

Contents

1	Front	2
2	OBI	3
2.1	OBI	3
2.1.1	Images	3
2.1.2	Bias	3
2.1.3	Parameters	4
2.1.4	Events	4
2.2	Compared Parameters	5
2.3	Star Slots	6
2.4	FID Slots	6
A	Summary	7
A.1	Status	7
A.2	Comments	7

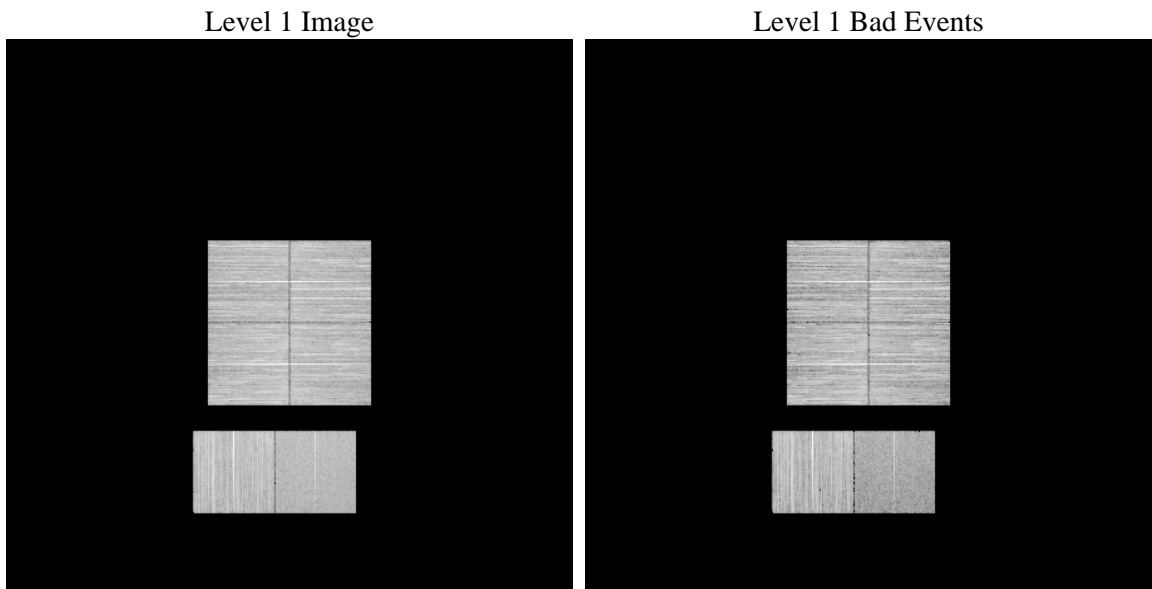
1 Front

seq_num	 	Sequence number
obs_id	53986	Observation id
title	ACIS-012367 diagnostics	Proposal title
observer	CHANDRA engineering request/realtime commanding	Principal investig
object	 	Source name
dtcycle	0	
cycle	P	events from which exps? Prim/Second/Both
ra_targ	0.0	Observer's specified target RA [deg]
dec_targ	0.0	Observer's specified target Dec [deg]
ra_nom	154.00496571799	Nominal RA [deg]
dec_nom	-0.97163414580591	Nominal Dec [deg]
roll_nom	47.167431402955	Nominal Roll [deg]
revision	1	Processing version of data
ontime	8290.0435299873	Sum of GTIs [s]
livetime	8185.0700071457	Livetime [s]
ontime0	8290.002489984	Sum of GTIs [s]
ontime1	8289.9614499807	Sum of GTIs [s]
ontime2	8289.9204099774	Sum of GTIs [s]
ontime3	8290.0845699906	Sum of GTIs [s]
ontime6	8289.8793699741	Sum of GTIs [s]
ontime7	8290.0435299873	Sum of GTIs [s]
l2events	227665	Number of level 2 events

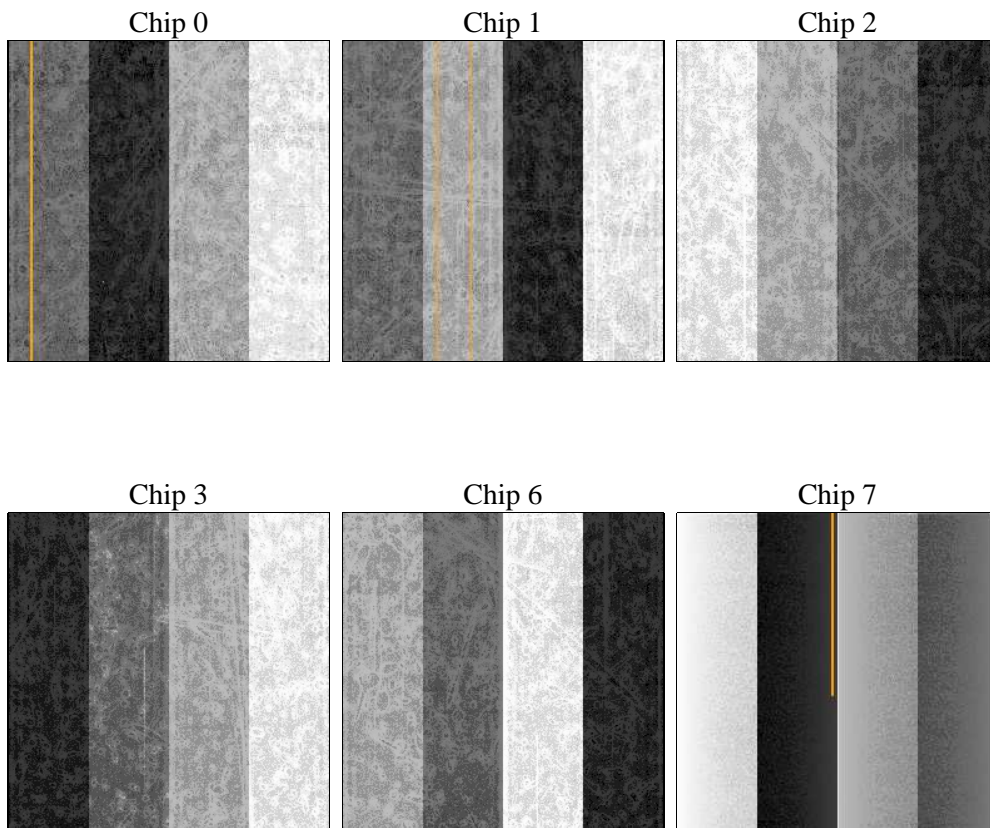
2 OBI

2.1 OBI

2.1.1 Images



2.1.2 Bias



2.1.3 Parameters

obi_num	0	Obi number	sched_exp_time	0.0	[s] Scheduled observation exposure time
ascdsver	8.5.1.1	Processing system revision	ontime	8290.0435299873	Sum of GTIs [s]
caldsver	4.5.5	 	ontime0	8290.002489984	Sum of GTIs [s]
date	2013-01-31T05:00:46	Date and time of file creation	ontime1	8289.9614499807	Sum of GTIs [s]
revision	1	Processing version of data	ontime2	8289.9204099774	Sum of GTIs [s]
			ontime3	8290.0845699906	Sum of GTIs [s]
			ontime6	8289.8793699741	Sum of GTIs [s]
			ontime7	8290.0435299873	Sum of GTIs [s]
			l1events	988733	Number of level 1 events

2.1.4 Events

	ccd 0	ccd 1	ccd 2	ccd 3	ccd 6	ccd 7		ccd 0	ccd 1	ccd 2	ccd 3	ccd 6	ccd 7
level 1 events	163155	167492	181456	163234	177382	136014	grade 0 events	17644	17245	18580	18387	18378	9535
rejected events	128604	132734	145904	128103	140574	71424		10%	10%	10%	11%	10%	7%
rejected %	78%	79%	80%	78%	79%	52%	grade 1 events	88	90	120	120	94	104
								0%	0%	0%	0%	0%	0%
							grade 2 events	6871	7107	6932	6745	7246	15733
								4%	4%	3%	4%	4%	11%
							grade 3 events	2335	2320	2348	2354	2387	5492
								1%	1%	1%	1%	1%	4%
							grade 4 events	2310	2382	2379	2440	2484	5246
								1%	1%	1%	1%	1%	3%
							grade 5 events	3116	3085	2986	3428	3316	8285
								1%	1%	1%	2%	1%	6%
							grade 6 events	5391	5704	5313	5205	6313	28584
								3%	3%	2%	3%	3%	21%
							grade 7 events	125400	129559	142798	124555	137164	63035
								76%	77%	78%	76%	77%	46%

2.2 Compared Parameters

Parameter	Planned	Actual	Parameter	Planned	Actual
Instrument	ACIS	ACIS	Obspar format version number	7	7
Detector	ACIS-012367	ACIS-012367	Obspar file type	PREDICTED	ACTUAL
Grating	NONE	NONE	Obspar update status	NONE	UPDATED
Data mode	FAINT	FAINT	Number of optional ACIS chips dropped	0	0
Observation mode	SECONDARY	SECONDARY	On-chip summing requested	N	N
[deg] Pointing RA	0	154.0049657179883	Subarray requested	NONE	NONE
[deg] Pointing Dec	0	-0.971634145805906	Alternating exposures requested	N	N
[deg] Pointing Roll	0.0	47.16743140295485	[s] Primary exposure time	3.2	3.2
[mm] SIM focus pos	-1.429586	-1.428180813131781			
[mm] SIM defocus	0.1037507710433287	0.1051558262725154			
[mm] SIM translation stage pos	250.455976	250.4635187648994			
[mm] SIM translation stage offset	0	-0.007540371344731511			
[s] Observation start time (MET)	475905400.664643	475905399.63964			
Observation start date	2013-01-30T03:56:41	2013-01-30T03:56:39			
[s] Observation end time (MET)	475919137.715384	475919136.69038			
Observation end date	2013-01-30T07:45:38	2013-01-30T07:45:36			
Read mode	TIMED	TIMED			

2.3 Star Slots

2.4 FID Slots

A Summary

A.1 Status

V&V Scientist	Joy Nichols
V&V Date (YYYY-MM-DD)	2013.01.31
V&V Edition	1
V&V Disposition and Status	OK
V&V Charge Time	8.2900435299873

A.2 Comments