

# V&V Reference Report

## L2 ASCDS Version : 8.5.1.1

Observation 53836 - L2 Version 1  
Chandra X-Ray Center

L2 Processing Date : Mar 27 2013

## Contents

<b>1</b>	<b>Front</b>	<b>2</b>
<b>2</b>	<b>OBI</b>	<b>3</b>
2.1	OBI . . . . .	3
2.1.1	Images . . . . .	3
2.1.2	Bias . . . . .	3
2.1.3	Parameters . . . . .	4
2.1.4	Events . . . . .	4
2.2	Compared Parameters . . . . .	5
2.3	Star Slots . . . . .	6
2.4	FID Slots . . . . .	6
<b>A</b>	<b>Summary</b>	<b>7</b>
A.1	Status . . . . .	7
A.2	Comments . . . . .	7

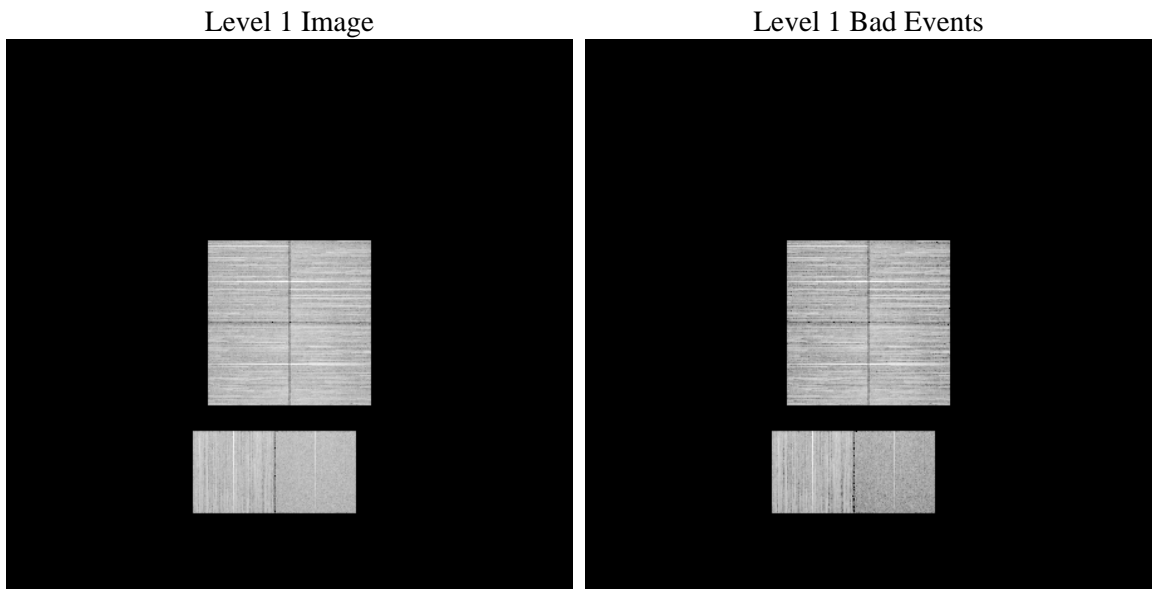
# 1 Front

seq_num	&#160	Sequence number
obs_id	53836	Observation id
title	ACIS-012367 diagnostics	Proposal title
observer	CHANDRA engineering request/realtime commanding	Principal investig
object	&#160	Source name
dtcycle	0	&#160
cycle	P	events from which exps? Prim/Second/Both
ra_targ	0.0	Observer's specified target RA [deg]
dec_targ	0.0	Observer's specified target Dec [deg]
ra_nom	155.19104598935	Nominal RA [deg]
dec_nom	23.343167974123	Nominal Dec [deg]
roll_nom	224.11194076361	Nominal Roll [deg]
revision	1	Processing version of data
ontime	8054.080140233	Sum of GTIs [s]
livetime	7952.0945279126	Livetime [s]
ontime0	8054.0391002297	Sum of GTIs [s]
ontime1	8053.9980602264	Sum of GTIs [s]
ontime2	8053.9570202231	Sum of GTIs [s]
ontime3	8054.1211802363	Sum of GTIs [s]
ontime6	8053.9159802198	Sum of GTIs [s]
ontime7	8054.080140233	Sum of GTIs [s]
l2events	213043	Number of level 2 events

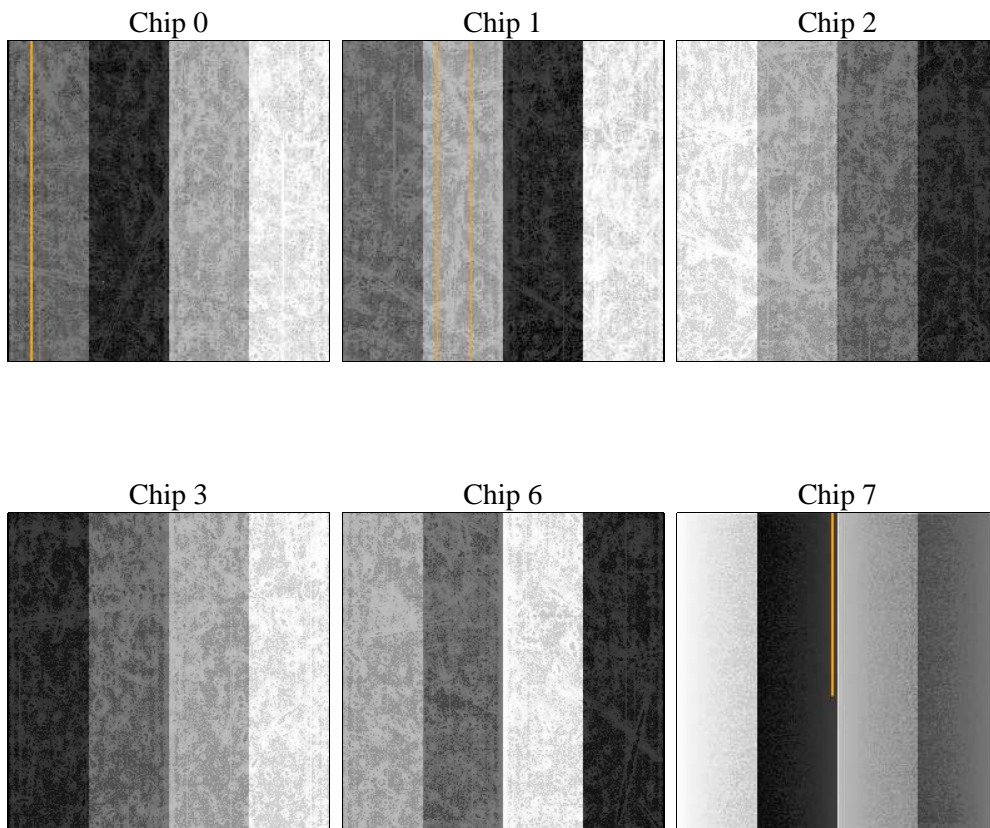
## 2 OBI

### 2.1 OBI

#### 2.1.1 Images



#### 2.1.2 Bias



### 2.1.3 Parameters

obi_num	1	Obi number	sched_exp_time	0.0	[s] Scheduled observation exposure time
ascdsver	8.5.1.1	Processing system revision	ontime	8054.080140233	Sum of GTIs [s]
caldsver	4.5.6	&#160	ontime0	8054.0391002297	Sum of GTIs [s]
date	2013-03-27T14:17:08	Date and time of file creation	ontime1	8053.9980602264	Sum of GTIs [s]
revision	1	Processing version of data	ontime2	8053.9570202231	Sum of GTIs [s]
			ontime3	8054.1211802363	Sum of GTIs [s]
			ontime6	8053.9159802198	Sum of GTIs [s]
			ontime7	8054.080140233	Sum of GTIs [s]
			l1events	935902	Number of level 1 events

### 2.1.4 Events

	ccd 0	ccd 1	ccd 2	ccd 3	ccd 6	ccd 7		ccd 0	ccd 1	ccd 2	ccd 3	ccd 6	ccd 7
level 1 events	154019	163016	159817	168156	160147	130747	grade 0 events	16952	16799	17740	17761	17632	9085
rejected events	121615	129878	126906	135108	126106	70522		11%	10%	11%	10%	11%	6%
rejected %	78%	79%	79%	80%	78%	53%	grade 1 events	86	90	97	96	86	95
								0%	0%	0%	0%	0%	0%
							grade 2 events	6653	7195	6487	6418	6855	15083
								4%	4%	4%	3%	4%	11%
							grade 3 events	2255	2248	2334	2397	2301	5243
								1%	1%	1%	1%	1%	4%
							grade 4 events	2270	2292	2311	2451	2255	5268
								1%	1%	1%	1%	1%	4%
							grade 5 events	2998	3022	2812	3420	3196	7987
								1%	1%	1%	2%	1%	6%
							grade 6 events	5171	5583	5009	4998	6023	27266
								3%	3%	3%	2%	3%	20%
							grade 7 events	117634	125787	123027	130615	121799	60720
								76%	77%	76%	77%	76%	46%

## 2.2 Compared Parameters

Parameter	Planned	Actual
Instrument	ACIS	ACIS
Detector	ACIS-012367	ACIS-012367
Grating	NONE	NONE
Data mode	FAINT	FAINT
Observation mode	SECONDARY	SECONDARY
[deg] Pointing RA	0	155.19104598935
[deg] Pointing Dec	0	23.34316797412268
[deg] Pointing Roll	0.0	224.1119407636122
SIM focus pos (mm)	-1.4281808131	-1.4281808131
[mm] SIM defocus	0.1051557500557434	0.1051557500557434
SIM translation stage pos (mm)	250.4660330802	250.4660330802
[mm] SIM translation stage offset	-0.01005726120527584	-0.01005726120527584
[s] Observation start time (MET)	480700408.323853	480700408.323853
Observation start date	2013-03-26T15:53:28	2013-03-26T15:53:28
[s] Observation end time (MET)	480709740.710698	480709740.710698
Observation end date	2013-03-26T18:29:01	2013-03-26T18:29:00
Read mode	TIMED	TIMED

Parameter	Planned	Actual
Obspar format version number	7	7
Obspar file type	PREDICTED	ACTUAL
Obspar update status	OVERRIDE	OVERRIDE
Number of optional ACIS chips dropped	0	0
On-chip summing requested	N	N
Subarray requested	NONE	NONE
Alternating exposures requested	N	N
[s] Primary exposure time	3.2	3.2

## **2.3 Star Slots**

## **2.4 FID Slots**

## A Summary

### A.1 Status

V&V Scientist	Jen Lauer
V&V Date (YYYY-MM-DD)	2013.03.27
V&V Edition	1
V&V Disposition and Status	OK
V&V Charge Time	8.054080140233

### A.2 Comments