

# V&V Reference Report

## L2 ASCDS Version : 8.5.1.1

Observation 53774 - L2 Version 1  
Chandra X-Ray Center

L2 Processing Date : Apr 15 2013

## Contents

<b>1</b>	<b>Front</b>	<b>2</b>
<b>2</b>	<b>OBI</b>	<b>3</b>
2.1	OBI . . . . .	3
2.1.1	Images . . . . .	3
2.1.2	Bias . . . . .	3
2.1.3	Parameters . . . . .	4
2.1.4	Events . . . . .	4
2.2	Compared Parameters . . . . .	5
2.3	Star Slots . . . . .	6
2.4	FID Slots . . . . .	6
<b>A</b>	<b>Summary</b>	<b>7</b>
A.1	Status . . . . .	7
A.2	Comments . . . . .	7

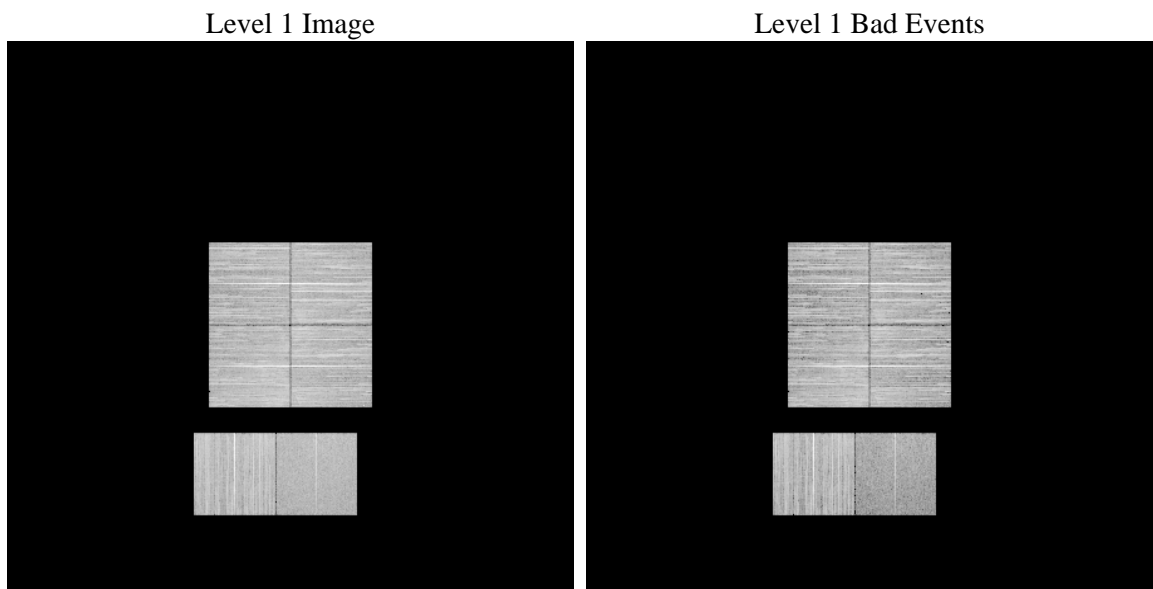
# 1 Front

seq_num	&#160	Sequence number
obs_id	53774	Observation id
title	ACIS-012367 diagnostics	Proposal title
observer	CHANDRA engineering request/realtime commanding	Principal investig
object	&#160	Source name
dtcycle	0	&#160
cycle	P	events from which exps? Prim/Second/Both
ra_targ	0.0	Observer's specified target RA [deg]
dec_targ	0.0	Observer's specified target Dec [deg]
ra_nom	214.20076892781	Nominal RA [deg]
dec_nom	-6.4619666262259	Nominal Dec [deg]
roll_nom	120.79177557746	Nominal Roll [deg]
revision	1	Processing version of data
ontime	8262.3999692798	Sum of GTIs [s]
livetime	8157.7764858488	Livetime [s]
ontime0	8262.3999692798	Sum of GTIs [s]
ontime1	8262.3999692798	Sum of GTIs [s]
ontime2	8262.3999692798	Sum of GTIs [s]
ontime3	8262.3999692798	Sum of GTIs [s]
ontime6	8262.3999692798	Sum of GTIs [s]
ontime7	8262.3999692798	Sum of GTIs [s]
l2events	213728	Number of level 2 events

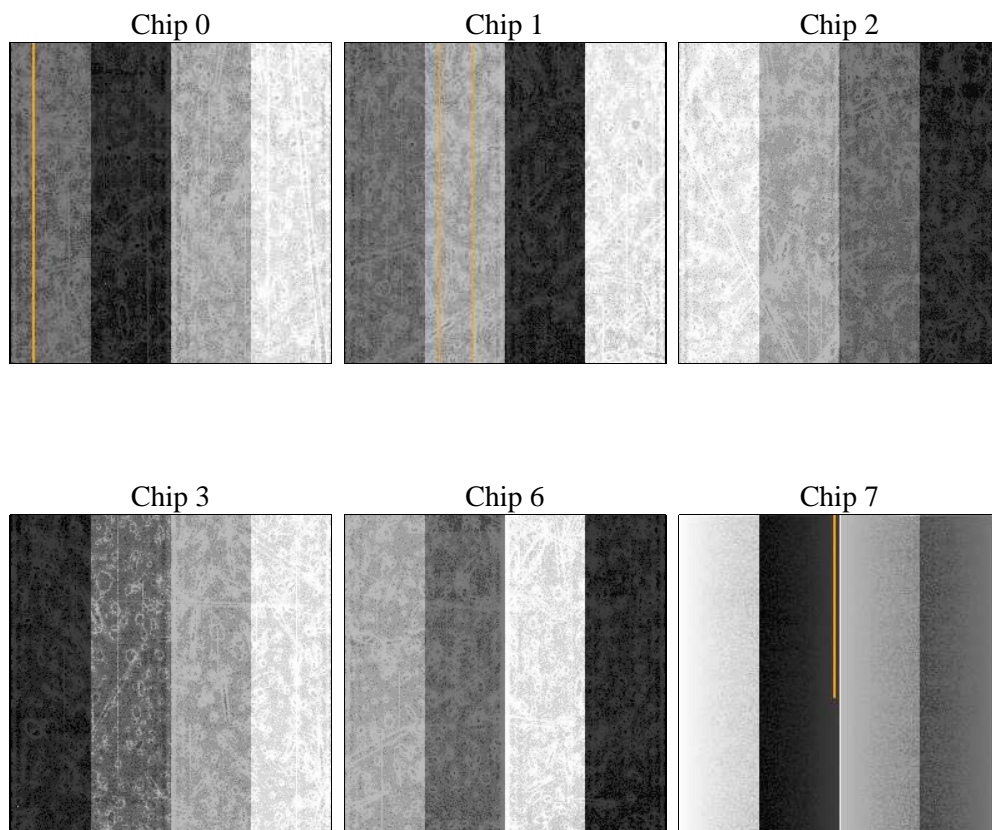
## 2 OBI

### 2.1 OBI

#### 2.1.1 Images



#### 2.1.2 Bias



### 2.1.3 Parameters

obi_num	0	Obi number	sched_exp_time	0.0	[s] Scheduled observation exposure time
ascdsver	8.5.1.1	Processing system revision	ontime	8262.3999692798	Sum of GTIs [s]
caldsver	4.5.6	&#160	ontime0	8262.3999692798	Sum of GTIs [s]
date	2013-04-15T15:22:07	Date and time of file creation	ontime1	8262.3999692798	Sum of GTIs [s]
revision	1	Processing version of data	ontime2	8262.3999692798	Sum of GTIs [s]
			ontime3	8262.3999692798	Sum of GTIs [s]
			ontime6	8262.3999692798	Sum of GTIs [s]
			ontime7	8262.3999692798	Sum of GTIs [s]
			l1events	947415	Number of level 1 events

### 2.1.4 Events

	ccd 0	ccd 1	ccd 2	ccd 3	ccd 6	ccd 7		ccd 0	ccd 1	ccd 2	ccd 3	ccd 6	ccd 7
level 1 events	152513	167226	169872	160586	169383	127835	grade 0 events	16768	16231	17385	17579	17055	8681
rejected events	119596	134396	136636	127170	134918	68323		10%	9%	10%	10%	10%	6%
rejected %	78%	80%	80%	79%	79%	53%	grade 1 events	92	69	106	103	78	69
								0%	0%	0%	0%	0%	0%
							grade 2 events	6658	6919	6426	6475	7186	14815
								4%	4%	3%	4%	4%	11%
							grade 3 events	2311	2096	2264	2233	2188	4758
								1%	1%	1%	1%	1%	3%
							grade 4 events	2127	2178	2239	2274	2219	4719
								1%	1%	1%	1%	1%	3%
							grade 5 events	2872	2789	2561	3199	3008	7451
								1%	1%	1%	1%	1%	5%
							grade 6 events	5158	5510	5019	4940	5918	26726
								3%	3%	2%	3%	3%	20%
							grade 7 events	116527	131434	133872	123783	131731	60616
								76%	78%	78%	77%	77%	47%

## 2.2 Compared Parameters

Parameter	Planned	Actual
Instrument	ACIS	ACIS
Detector	ACIS-012367	ACIS-012367
Grating	NONE	NONE
Data mode	FAINT	FAINT
Observation mode	SECONDARY	SECONDARY
[deg] Pointing RA	0	214.2007689278135
[deg] Pointing Dec	0	-6.461966626225886
[deg] Pointing Roll	0.0	120.7917755774553
SIM focus pos (mm)	-1.4281808131	-1.4281808131
[mm] SIM defocus	0.1051557500557434	0.1051557500557434
SIM translation stage pos (mm)	250.4660330802	250.4660330802
[mm] SIM translation stage offset	-0.01005726120527584	-0.01005726120527584
[s] Observation start time (MET)	482332017.762173	482332017.762173
Observation start date	2013-04-14T13:06:58	2013-04-14T13:06:57
[s] Observation end time (MET)	482341230.066863	482341230.066863
Observation end date	2013-04-14T15:40:30	2013-04-14T15:40:30
Read mode	TIMED	TIMED

Parameter	Planned	Actual
Obspar format version number	7	7
Obspar file type	PREDICTED	ACTUAL
Obspar update status	OVERRIDE	OVERRIDE
Number of optional ACIS chips dropped	0	0
On-chip summing requested	N	N
Subarray requested	NONE	NONE
Alternating exposures requested	N	N
[s] Primary exposure time	3.2	3.2

## 2.3 Star Slots

## 2.4 FID Slots

## A Summary

### A.1 Status

V&V Scientist	Jen Lauer
V&V Date (YYYY-MM-DD)	2013.04.15
V&V Edition	1
V&V Disposition and Status	OK
V&V Charge Time	8.2623999692798

### A.2 Comments