

# V&V Reference Report

## L2 ASCDS Version : 8.4.4

Observation 54659 - L2 Version 1  
Chandra X-Ray Center

L2 Processing Date : Apr 27 2012

## Contents

<b>1</b>	<b>Front</b>	<b>2</b>
<b>2</b>	<b>OBI</b>	<b>3</b>
2.1	OBI . . . . .	3
2.1.1	Images . . . . .	3
2.1.2	Bias . . . . .	3
2.1.3	Parameters . . . . .	4
2.1.4	Events . . . . .	4
2.2	Compared Parameters . . . . .	5
2.3	Star Slots . . . . .	6
2.4	FID Slots . . . . .	6
<b>A</b>	<b>Summary</b>	<b>7</b>
A.1	Status . . . . .	7
A.2	Comments . . . . .	7

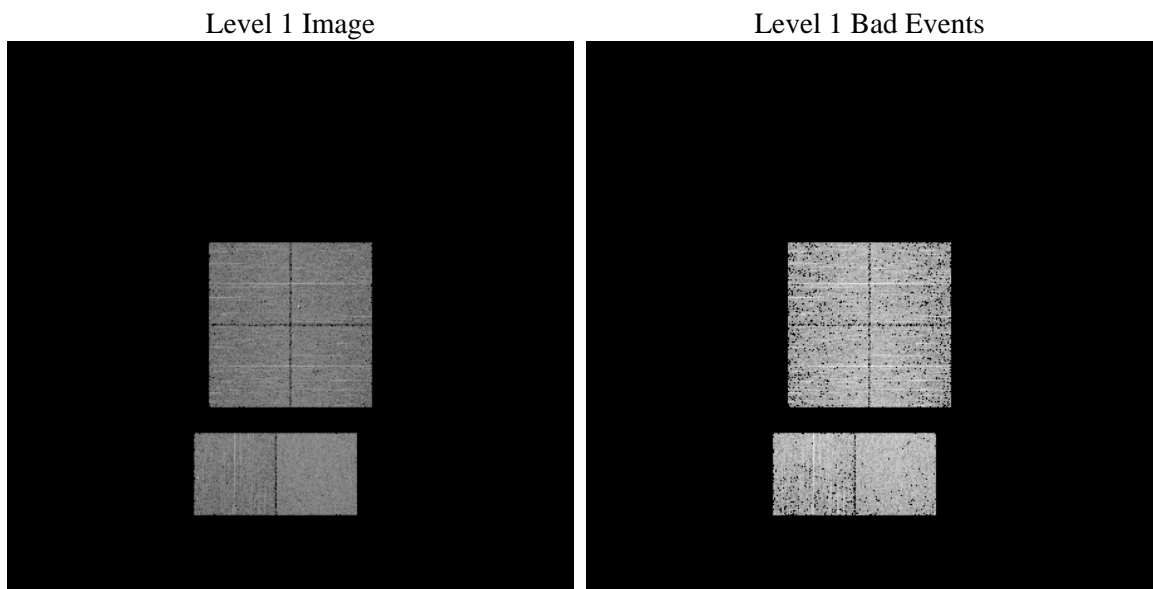
# 1 Front

seq_num	&#160	Sequence number
obs_id	54659	Observation id
title	ACIS-012367 diagnostics	Proposal title
observer	CHANDRA engineering request/realtime commanding	Principal investig
object	&#160	Source name
dtcycle	0	&#160
cycle	P	events from which exps? Prim/Second/Both
ra_targ	0.0	Observer's specified target RA [deg]
dec_targ	0.0	Observer's specified target Dec [deg]
ra_nom	291.90902590226	Nominal RA [deg]
dec_nom	24.202012970817	Nominal Dec [deg]
roll_nom	110.1829693486	Nominal Roll [deg]
revision	1	Processing version of data
ontime	3115.8917571902	Sum of GTIs [s]
livetime	3076.4364595959	Livetime [s]
ontime0	3115.8507171869	Sum of GTIs [s]
ontime1	3115.8096771836	Sum of GTIs [s]
ontime2	3115.7686371803	Sum of GTIs [s]
ontime3	3115.9327971935	Sum of GTIs [s]
ontime6	3115.727597177	Sum of GTIs [s]
ontime7	3115.8917571902	Sum of GTIs [s]
l2events	97257	Number of level 2 events

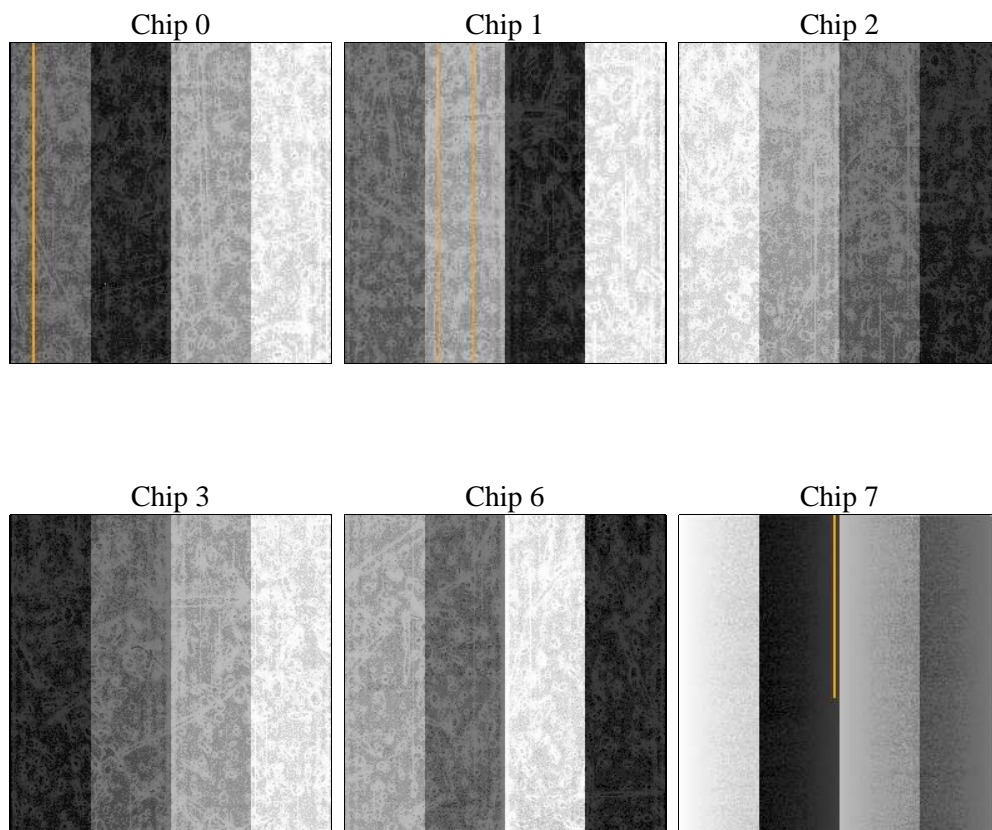
## 2 OBI

### 2.1 OBI

#### 2.1.1 Images



#### 2.1.2 Bias



### 2.1.3 Parameters

obi_num	0	Obi number	sched_exp_time	0.0	[s] Scheduled observation exposure time
ascdsver	8.4.4	Processing system revision	ontime	3115.8917571902	Sum of GTIs [s]
caldsver	4.4.9	&#160	ontime0	3115.8507171869	Sum of GTIs [s]
date	2012-04-27T21:35:26	Date and time of file creation	ontime1	3115.8096771836	Sum of GTIs [s]
revision	1	Processing version of data	ontime2	3115.7686371803	Sum of GTIs [s]
			ontime3	3115.9327971935	Sum of GTIs [s]
			ontime6	3115.727597177	Sum of GTIs [s]
			ontime7	3115.8917571902	Sum of GTIs [s]
			l1events	228431	Number of level 1 events

### 2.1.4 Events

	ccd 0	ccd 1	ccd 2	ccd 3	ccd 6	ccd 7		ccd 0	ccd 1	ccd 2	ccd 3	ccd 6	ccd 7
level 1 events	34860	35728	35632	36255	37128	48828	grade 0 events	8481	9339	8638	8724	9546	4401
rejected events	19567	19348	20291	20858	20325	23285		24%	26%	24%	24%	25%	9%
rejected %	56%	54%	56%	57%	54%	47%	grade 1 events	42	53	50	49	53	38
								0%	0%	0%	0%	0%	0%
							grade 2 events	3058	3142	2866	2865	3152	5755
								8%	8%	8%	7%	8%	11%
							grade 3 events	1101	1099	1087	1157	1065	2466
								3%	3%	3%	3%	2%	5%
							grade 4 events	1071	1045	1194	1133	1125	2306
								3%	2%	3%	3%	3%	4%
							grade 5 events	1238	1234	1217	1377	1326	3397
								3%	3%	3%	3%	3%	6%
							grade 6 events	2448	2704	2434	2457	2840	12031
								7%	7%	6%	6%	7%	24%
							grade 7 events	17421	17112	18146	18493	18021	18434
								49%	47%	50%	51%	48%	37%

## 2.2 Compared Parameters

Parameter	Planned	Actual
Instrument	ACIS	ACIS
Detector	ACIS-012367	ACIS-012367
Grating	NONE	NONE
Data mode	FAINT	FAINT
Observation mode	SECONDARY	SECONDARY
[deg] Pointing RA	0	291.9090259022576
[deg] Pointing Dec	0	24.20201297081696
[deg] Pointing Roll	0.0	110.182969348597
SIM focus pos (mm)	-1.4281808131	-1.4281808131
[mm] SIM defocus	0.1051557500557434	0.1051557500557434
SIM translation stage pos (mm)	250.4660330802	250.4660330802
[mm] SIM translation stage offset	-0.01005726120527584	-0.01005726120527584
[s] Observation start time (MET)	451913828.108419	451913828.108419
Observation start date	2012-04-27T11:37:08	2012-04-27T11:37:08
[s] Observation end time (MET)	451918374.6411	451918374.6411
Observation end date	2012-04-27T12:52:55	2012-04-27T12:52:54
Read mode	TIMED	TIMED

Parameter	Planned	Actual
Obspar format version number	7	7
Obspar file type	PREDICTED	ACTUAL
Obspar update status	OVERRIDE	OVERRIDE
Number of optional ACIS chips dropped	0	0
On-chip summing requested	N	N
Subarray requested	NONE	NONE
Alternating exposures requested	N	N
[s] Primary exposure time	3.2	3.2

## **2.3 Star Slots**

## **2.4 FID Slots**

## A Summary

### A.1 Status

V&V Scientist	Joy Nichols
V&V Date (YYYY-MM-DD)	2012.04.30
V&V Edition	1
V&V Disposition and Status	OK
V&V Charge Time	3.1158917571902

### A.2 Comments