

V&V Reference Report

L2 ASCDS Version : 8.4.5

Observation 54380 - L2 Version 1
Chandra X-Ray Center

L2 Processing Date : Aug 27 2012

Contents

1	Front	2
2	OBI	3
2.1	OBI	3
2.1.1	Images	3
2.1.2	Bias	3
2.1.3	Parameters	4
2.1.4	Events	4
2.2	Compared Parameters	5
2.3	Star Slots	6
2.4	FID Slots	6
A	Summary	7
A.1	Status	7
A.2	Comments	7

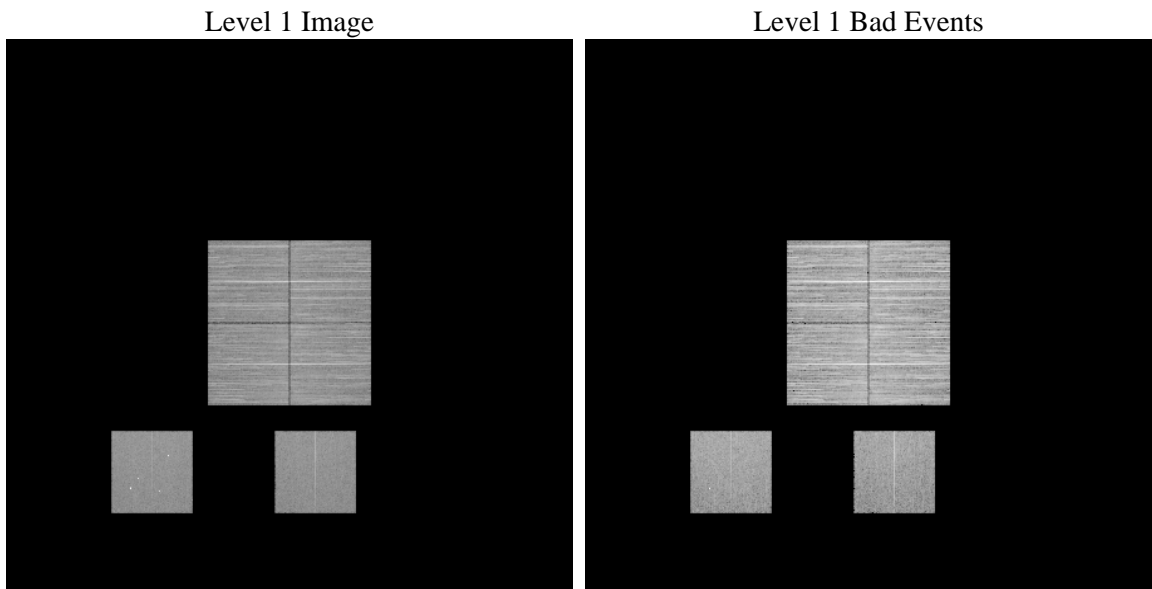
1 Front

seq_num	 	Sequence number
obs_id	54380	Observation id
title	ACIS-012357 diagnostics	Proposal title
observer	CHANDRA engineering request/realtime commanding	Principal investig
object	 	Source name
dtcycle	0	
cycle	P	events from which exps? Prim/Second/Both
ra_targ	0.0	Observer's specified target RA [deg]
dec_targ	0.0	Observer's specified target Dec [deg]
ra_nom	311.5099362999	Nominal RA [deg]
dec_nom	-13.122298612283	Nominal Dec [deg]
roll_nom	274.83336673151	Nominal Roll [deg]
revision	1	Processing version of data
ontime	8287.271823287	Sum of GTIs [s]
livetime	8182.3333974645	Livetime [s]
ontime0	8287.271813333	Sum of GTIs [s]
ontime1	8290.3566588759	Sum of GTIs [s]
ontime2	8290.3156188726	Sum of GTIs [s]
ontime3	8287.271813333	Sum of GTIs [s]
ontime5	8290.2745788693	Sum of GTIs [s]
ontime7	8287.271823287	Sum of GTIs [s]
l2events	372375	Number of level 2 events

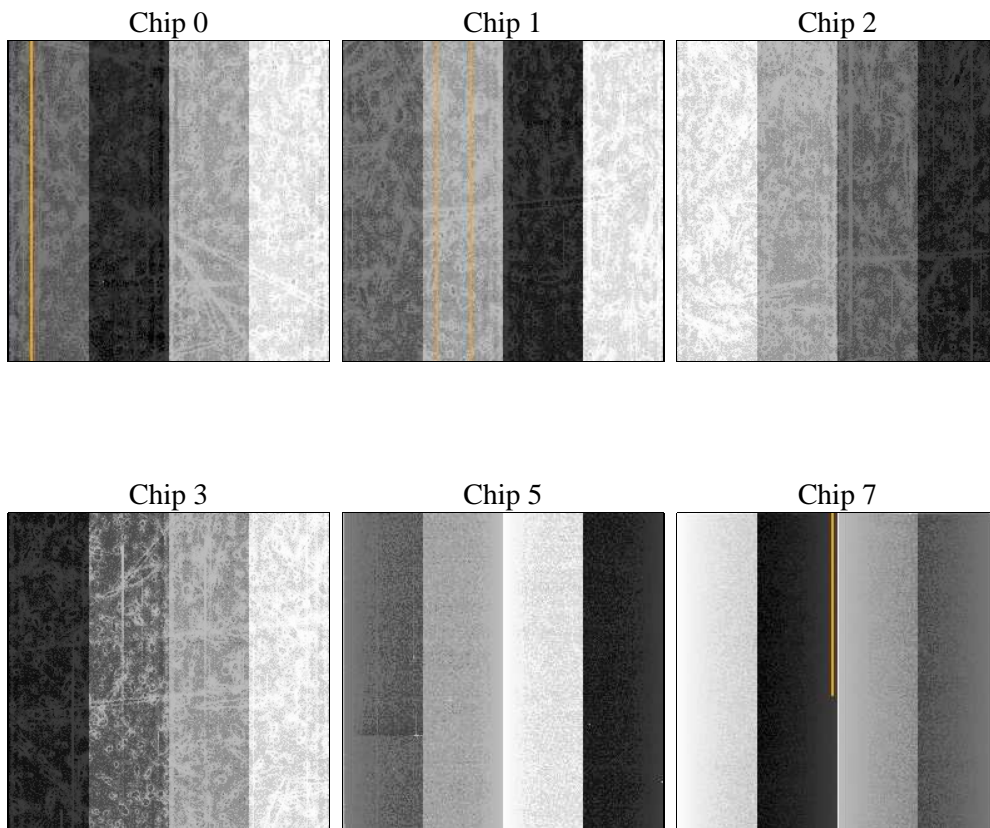
2 OBI

2.1 OBI

2.1.1 Images



2.1.2 Bias



2.1.3 Parameters

obi_num	0	Obi number	sched_exp_time	0.0	[s] Scheduled observation exposure time
ascdsver	8.4.5	Processing system revision	ontime	8287.271823287	Sum of GTIs [s]
caldsver	4.5.1.1	 	ontime0	8287.271813333	Sum of GTIs [s]
date	2012-08-28T02:16:51	Date and time of file creation	ontime1	8290.3566588759	Sum of GTIs [s]
revision	1	Processing version of data	ontime2	8290.3156188726	Sum of GTIs [s]
			ontime3	8287.271813333	Sum of GTIs [s]
			ontime5	8290.2745788693	Sum of GTIs [s]
			ontime7	8287.271823287	Sum of GTIs [s]
			l1events	1065416	Number of level 1 events

2.1.4 Events

	ccd 0	ccd 1	ccd 2	ccd 3	ccd 5	ccd 7		ccd 0	ccd 1	ccd 2	ccd 3	ccd 5	ccd 7
level 1 events	184458	190162	184961	192688	160212	152935	grade 0 events	29010	27439	29463	29826	11617	14374
rejected events	127177	132734	128161	135083	76546	71469		15%	14%	15%	15%	7%	9%
rejected %	68%	69%	69%	70%	47%	46%	grade 1 events	157	137	163	161	124	108
								0%	0%	0%	0%	0%	0%
							grade 2 events	11076	12344	10556	10623	32676	20145
								6%	6%	5%	5%	20%	13%
							grade 3 events	3575	3431	3562	3782	2952	6671
								1%	1%	1%	1%	1%	4%
							grade 4 events	3541	3551	3705	3691	2852	6298
								1%	1%	2%	1%	1%	4%
							grade 5 events	3028	3037	2940	3297	6737	7630
								1%	1%	1%	1%	4%	4%
							grade 6 events	10079	10663	9514	9683	33569	33978
								5%	5%	5%	5%	20%	22%
							grade 7 events	123992	129560	125058	131625	69685	63731
								67%	68%	67%	68%	43%	41%

2.2 Compared Parameters

Parameter	Planned	Actual	Parameter	Planned	Actual
Instrument	ACIS	ACIS	Obspar format version number	7	7
Detector	ACIS-012357	ACIS-012357	Obspar file type	PREDICTED	ACTUAL
Grating	NONE	NONE	Obspar update status	NONE	UPDATED
Data mode	FAINT	FAINT	Number of optional ACIS chips dropped	0	0
Observation mode	SECONDARY	SECONDARY	On-chip summing requested	N	N
[deg] Pointing RA	0	311.5099362999032	Subarray requested	NONE	NONE
[deg] Pointing Dec	0	-13.12229861228276	Alternating exposures requested	N	N
[deg] Pointing Roll	0.0	274.8333667315123	[s] Primary exposure time	3.2	3.2
[mm] SIM focus pos	-1.429586	-1.428180813131781			
[mm] SIM defocus	0.1037507710433287	0.1051558262725154			
[mm] SIM translation stage pos	250.455976	250.466033080201			
[mm] SIM translation stage offset	0	-0.01005468664627074			
[s] Observation start time (MET)	462420372.839748	462420371.81475			
Observation start date	2012-08-27T02:06:13	2012-08-27T02:06:11			
[s] Observation end time (MET)	462430268.190277	462430267.16528			
Observation end date	2012-08-27T04:51:08	2012-08-27T04:51:07			
Read mode	TIMED	TIMED			

2.3 Star Slots

2.4 FID Slots

A Summary

A.1 Status

V&V Scientist	Joy Nichols
V&V Date (YYYY-MM-DD)	2012.08.28
V&V Edition	1
V&V Disposition and Status	OK
V&V Charge Time	8.287271823287

A.2 Comments