

V&V Reference Report

L2 ASCDS Version : 8.4.5

Observation 54281 - L2 Version 2
Chandra X-Ray Center

L2 Processing Date : Oct 30 2012

Contents

1	Front	2
2	OBI	3
2.1	OBI	3
2.1.1	Images	3
2.1.2	Bias	3
2.1.3	Parameters	4
2.1.4	Events	4
2.2	Compared Parameters	5
2.3	Star Slots	6
2.4	FID Slots	6
A	Summary	7
A.1	Status	7
A.2	Comments	7

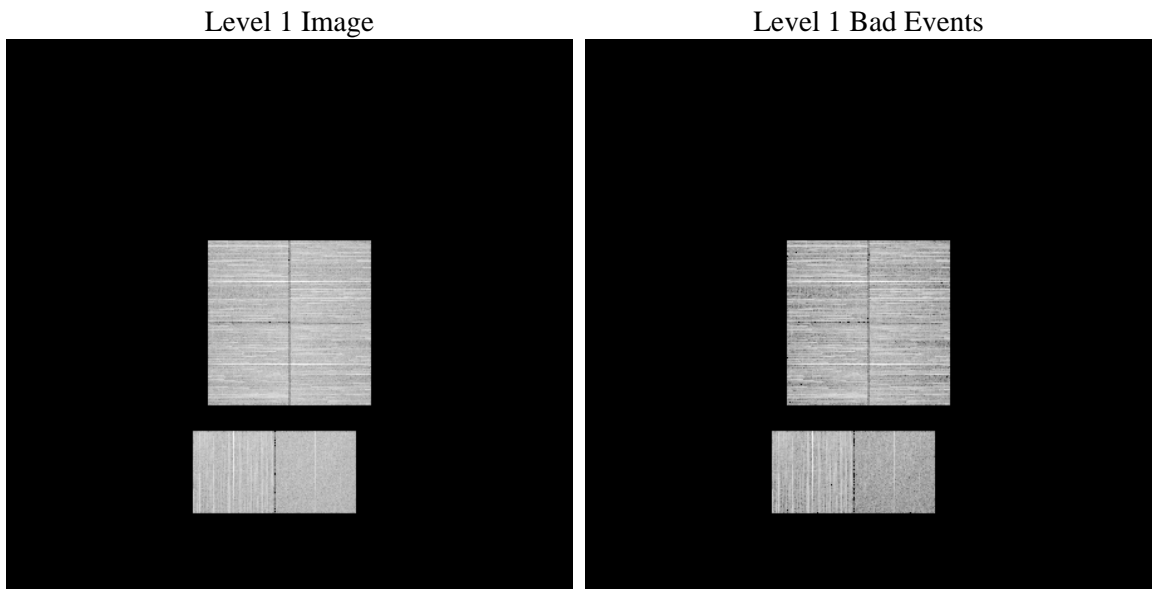
1 Front

seq_num	 	Sequence number
obs_id	54281	Observation id
title	ACIS-012367 diagnostics	Proposal title
observer	CHANDRA engineering request/realtime commanding	Principal investig
object	 	Source name
dtcycle	0	
cycle	P	events from which exps? Prim/Second/Both
ra_targ	0.0	Observer's specified target RA [deg]
dec_targ	0.0	Observer's specified target Dec [deg]
ra_nom	37.499870622898	Nominal RA [deg]
dec_nom	-6.8545983428479	Nominal Dec [deg]
roll_nom	63.786510174155	Nominal Roll [deg]
revision	2	Processing version of data
ontime	4799.9999821782	Sum of GTIs [s]
livetime	4739.2194921909	Livetime [s]
ontime0	4799.9999821782	Sum of GTIs [s]
ontime1	4799.9999821782	Sum of GTIs [s]
ontime2	4799.9999821782	Sum of GTIs [s]
ontime3	4799.9999821782	Sum of GTIs [s]
ontime6	4799.9999821782	Sum of GTIs [s]
ontime7	4799.9999821782	Sum of GTIs [s]
l2events	218122	Number of level 2 events

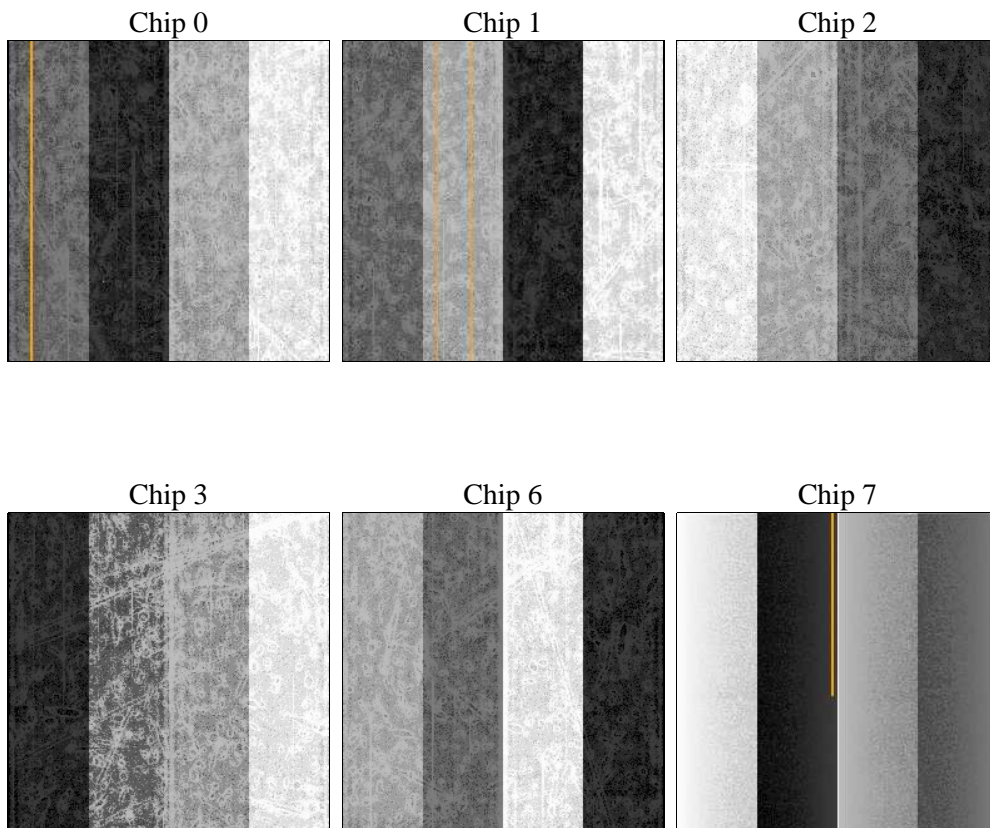
2 OBI

2.1 OBI

2.1.1 Images



2.1.2 Bias



2.1.3 Parameters

obi_num	0	Obi number	sched_exp_time	0.0	[s] Scheduled observation exposure time
ascdsver	8.4.5	Processing system revision	ontime	4799.9999821782	Sum of GTIs [s]
caldsver	4.5.2	 	ontime0	4799.9999821782	Sum of GTIs [s]
date	2012-10-30T14:24:32	Date and time of file creation	ontime1	4799.9999821782	Sum of GTIs [s]
revision	2	Processing version of data	ontime2	4799.9999821782	Sum of GTIs [s]
			ontime3	4799.9999821782	Sum of GTIs [s]
			ontime6	4799.9999821782	Sum of GTIs [s]
			ontime7	4799.9999821782	Sum of GTIs [s]
			l1events	708454	Number of level 1 events

2.1.4 Events

	ccd 0	ccd 1	ccd 2	ccd 3	ccd 6	ccd 7		ccd 0	ccd 1	ccd 2	ccd 3	ccd 6	ccd 7
level 1 events	118828	122032	123030	122417	122610	99537	grade 0 events	19144	18511	19590	19858	19489	9778
rejected events	83462	85814	87902	86578	84518	49799		16%	15%	15%	16%	15%	9%
rejected %	70%	70%	71%	70%	68%	50%	grade 1 events	86	99	123	114	87	74
								0%	0%	0%	0%	0%	0%
							grade 2 events	7608	8512	7112	7334	8566	13226
								6%	6%	5%	5%	6%	13%
							grade 3 events	2395	2402	2451	2592	2485	4322
								2%	1%	1%	2%	2%	4%
							grade 4 events	2398	2478	2479	2463	2441	4285
								2%	2%	2%	2%	1%	4%
							grade 5 events	1831	2074	1907	2109	2114	5102
								1%	1%	1%	1%	1%	5%
							grade 6 events	7046	7538	6623	6823	8550	22556
								5%	6%	5%	5%	6%	22%
							grade 7 events	78320	80418	82745	81124	78878	40194
								65%	65%	67%	66%	64%	40%

2.2 Compared Parameters

Parameter	Planned	Actual
Instrument	ACIS	ACIS
Detector	ACIS-012367	ACIS-012367
Grating	NONE	NONE
Data mode	FAINT	FAINT
Observation mode	SECONDARY	SECONDARY
[deg] Pointing RA	0	37.49987062289844
[deg] Pointing Dec	0	-6.854598342847901
[deg] Pointing Roll	0.0	63.78651017415493
SIM focus pos (mm)	-1.4281808131	-1.4281808131
[mm] SIM defocus	0.1051557500557434	0.1051557500557434
SIM translation stage pos (mm)	250.4660330802	250.4660330802
[mm] SIM translation stage offset	-0.01005726120527584	-0.01005726120527584
[s] Observation start time (MET)	465623159.761398	465623159.761398
Observation start date	2012-10-03T03:46:00	2012-10-03T03:45:59
[s] Observation end time (MET)	465628490.769764	465628490.769764
Observation end date	2012-10-03T05:14:51	2012-10-03T05:14:50
Read mode	TIMED	TIMED

Parameter	Planned	Actual
Obspar format version number	7	7
Obspar file type	PREDICTED	ACTUAL
Obspar update status	OVERRIDE	OVERRIDE
Number of optional ACIS chips dropped	0	0
On-chip summing requested	N	N
Subarray requested	NONE	NONE
Alternating exposures requested	N	N
[s] Primary exposure time	3.2	3.2

2.3 Star Slots

2.4 FID Slots

A Summary

A.1 Status

V&V Scientist	Jen Lauer
V&V Date (YYYY-MM-DD)	2012.11.15
V&V Edition	1
V&V Disposition and Status	OK
V&V Charge Time	4.7999999821782

A.2 Comments

A spatial region of the original bias map for CCD = 2 suffered from anomalously high data values. Pixels in the event data that were bias-corrected by one of the original affected bias pixels may have an apparent energy shift. While the change in energy is expected to be small (~ 20 eV), it depends on many parameters that have not yet been fully explored for this bias anomaly. The bias map for CCD = 2 has been reconstructed for this processing to remove this anomaly using scaled data from a comparable bias map from another observation. The pixels affected by the anomaly are bounded by chip coords:
(970,1),(1002,1),(1002,311),(970,332)