

# V&V Reference Report

## L2 ASCDS Version : 8.4.5

Observation 56546 - L2 Version 2  
Chandra X-Ray Center

L2 Processing Date : Jun 19 2012

## Contents

<b>1</b>	<b>Front</b>	<b>2</b>
<b>2</b>	<b>OBI</b>	<b>3</b>
2.1	OBI . . . . .	3
2.1.1	Images . . . . .	3
2.1.2	Bias . . . . .	3
2.1.3	Parameters . . . . .	4
2.1.4	Events . . . . .	4
2.2	Compared Parameters . . . . .	5
2.3	Star Slots . . . . .	6
2.4	FID Slots . . . . .	6
<b>A</b>	<b>Summary</b>	<b>7</b>
A.1	Status . . . . .	7
A.2	Comments . . . . .	7

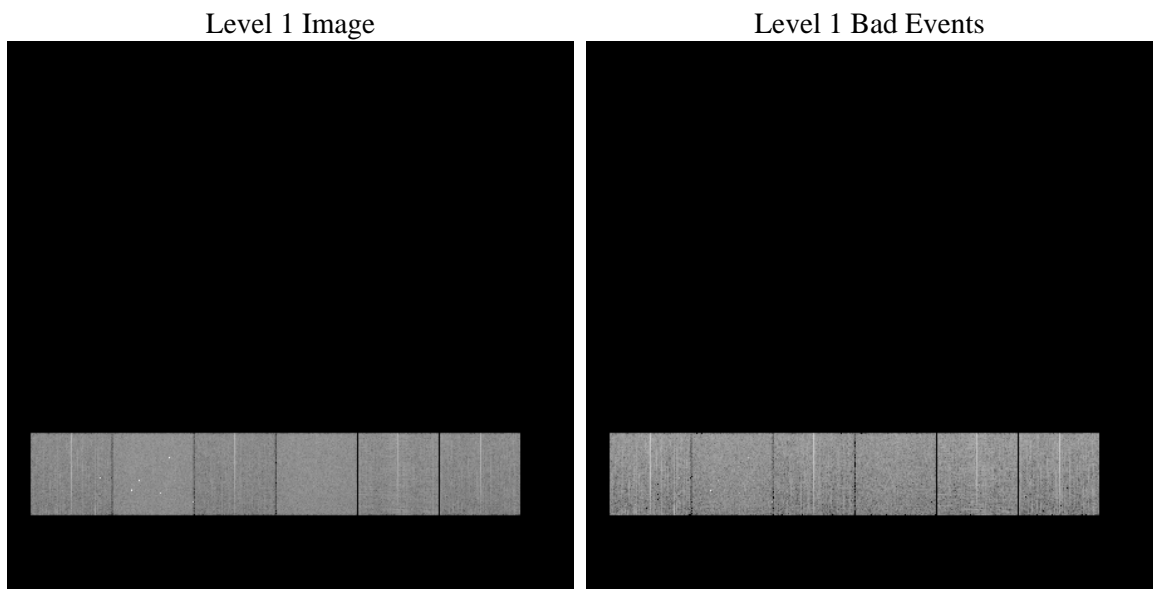
# 1 Front

seq_num	&#160	Sequence number
obs_id	56546	Observation id
title	ACIS-456789 diagnostics	Proposal title
observer	CHANDRA engineering request/realtime commanding	Principal investig
object	&#160	Source name
dtcycle	0	&#160
cycle	P	events from which exps? Prim/Second/Both
ra_targ	0.0	Observer's specified target RA [deg]
dec_targ	0.0	Observer's specified target Dec [deg]
ra_nom	120.45994258636	Nominal RA [deg]
dec_nom	44.001047475261	Nominal Dec [deg]
roll_nom	145.05427965019	Nominal Roll [deg]
revision	2	Processing version of data
ontime	4747.3409767747	Sum of GTIs [s]
livetime	4687.2272868212	Livetime [s]
ontime4	4747.2178567648	Sum of GTIs [s]
ontime5	4747.2999367714	Sum of GTIs [s]
ontime6	4747.2588967681	Sum of GTIs [s]
ontime7	4747.3409767747	Sum of GTIs [s]
ontime8	4747.1768167615	Sum of GTIs [s]
ontime9	4747.382016778	Sum of GTIs [s]
l2events	272763	Number of level 2 events

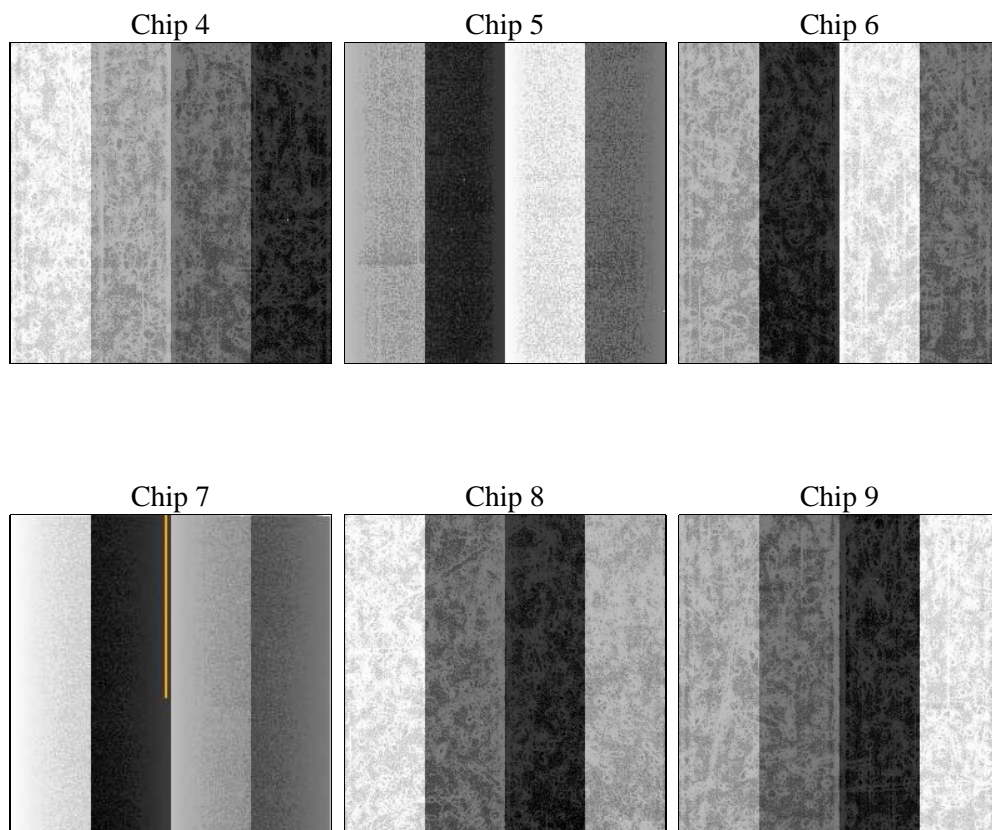
## 2 OBI

### 2.1 OBI

#### 2.1.1 Images



#### 2.1.2 Bias



### 2.1.3 Parameters

obi_num	0	Obi number	sched_exp_time	0.0	[s] Scheduled observation exposure time
ascdsver	8.4.5	Processing system revision	ontime	4747.3409767747	Sum of GTIs [s]
caldsver	4.4.10	&#160	ontime4	4747.2178567648	Sum of GTIs [s]
date	2012-06-19T08:36:32	Date and time of file creation	ontime5	4747.2999367714	Sum of GTIs [s]
revision	2	Processing version of data	ontime6	4747.2588967681	Sum of GTIs [s]
			ontime7	4747.3409767747	Sum of GTIs [s]
			ontime8	4747.1768167615	Sum of GTIs [s]
			ontime9	4747.382016778	Sum of GTIs [s]
			l1events	606039	Number of level 1 events

### 2.1.4 Events

	ccd 4	ccd 5	ccd 6	ccd 7	ccd 8	ccd 9		ccd 4	ccd 5	ccd 6	ccd 7	ccd 8	ccd 9
level 1 events	93754	118109	90047	108662	103544	91923	grade 0 events	23750	12731	21948	11679	24964	22244
rejected events	53912	49707	49047	45896	53838	51462		25%	10%	24%	10%	24%	24%
rejected %	57%	42%	54%	42%	51%	55%	grade 1 events	259	473	135	98	208	201
								0%	0%	0%	0%	0%	0%
							grade 2 events	6639	24125	7809	14243	9602	7308
								7%	20%	8%	13%	9%	7%
							grade 3 events	2797	3001	2825	5831	3918	2912
								2%	2%	3%	5%	3%	3%
							grade 4 events	2828	2988	2862	5966	3834	2939
								3%	2%	3%	5%	3%	3%
							grade 5 events	2563	6234	2757	7235	3501	3072
								2%	5%	3%	6%	3%	3%
							grade 6 events	5390	28231	7211	27567	9471	6713
								5%	23%	8%	25%	9%	7%
							grade 7 events	49528	40326	44500	36043	48046	46534
								52%	34%	49%	33%	46%	50%

## 2.2 Compared Parameters

Parameter	Planned	Actual
Instrument	ACIS	ACIS
Detector	ACIS-456789	ACIS-456789
Grating	NONE	NONE
Data mode	FAINT	FAINT
Observation mode	SECONDARY	SECONDARY
[deg] Pointing RA	0	120.4599425863645
[deg] Pointing Dec	0	44.00104747526134
[deg] Pointing Roll	0.0	145.0542796501931
[mm] SIM focus pos	-0.68282252473119	-0.68282252473119
[mm] SIM defocus	0.8505140384245534	0.8505140384245534
[mm] SIM translation stage pos	250.4660330802	250.4660330802
[mm] SIM translation stage offset	-0.01005726120527584	-0.01005726120527584
[s] Observation start time (MET)	379022678.065955	379022678.065955
Observation start date	2010-01-04T20:04:38	2010-01-04T20:04:38
[s] Observation end time (MET)	379028887.542469	379028887.542469
Observation end date	2010-01-04T21:48:08	2010-01-04T21:48:07
Read mode	TIMED	TIMED

Parameter	Planned	Actual
Obspar format version number	7	7
Obspar file type	PREDICTED	ACTUAL
Obspar update status	OVERRIDE	OVERRIDE
Number of optional ACIS chips dropped	0	0
On-chip summing requested	N	N
Subarray requested	NONE	NONE
Alternating exposures requested	N	N
[s] Primary exposure time	3.2	3.2

## 2.3 Star Slots

## 2.4 FID Slots

## A Summary

### A.1 Status

V&V Scientist	Jen Lauer
V&V Date (YYYY-MM-DD)	2012.06.25
V&V Edition	1
V&V Disposition and Status	OK
V&V Charge Time	4.7473409767747

### A.2 Comments