

# V&V Reference Report

## L2 ASCDS Version : 8.4.5

Observation 56523 - L2 Version 2  
Chandra X-Ray Center

L2 Processing Date : Jun 19 2012

## Contents

<b>1</b>	<b>Front</b>	<b>2</b>
<b>2</b>	<b>OBI</b>	<b>3</b>
2.1	OBI . . . . .	3
2.1.1	Images . . . . .	3
2.1.2	Bias . . . . .	3
2.1.3	Parameters . . . . .	4
2.1.4	Events . . . . .	4
2.2	Compared Parameters . . . . .	5
2.3	Star Slots . . . . .	6
2.4	FID Slots . . . . .	6
<b>A</b>	<b>Summary</b>	<b>7</b>
A.1	Status . . . . .	7
A.2	Comments . . . . .	7

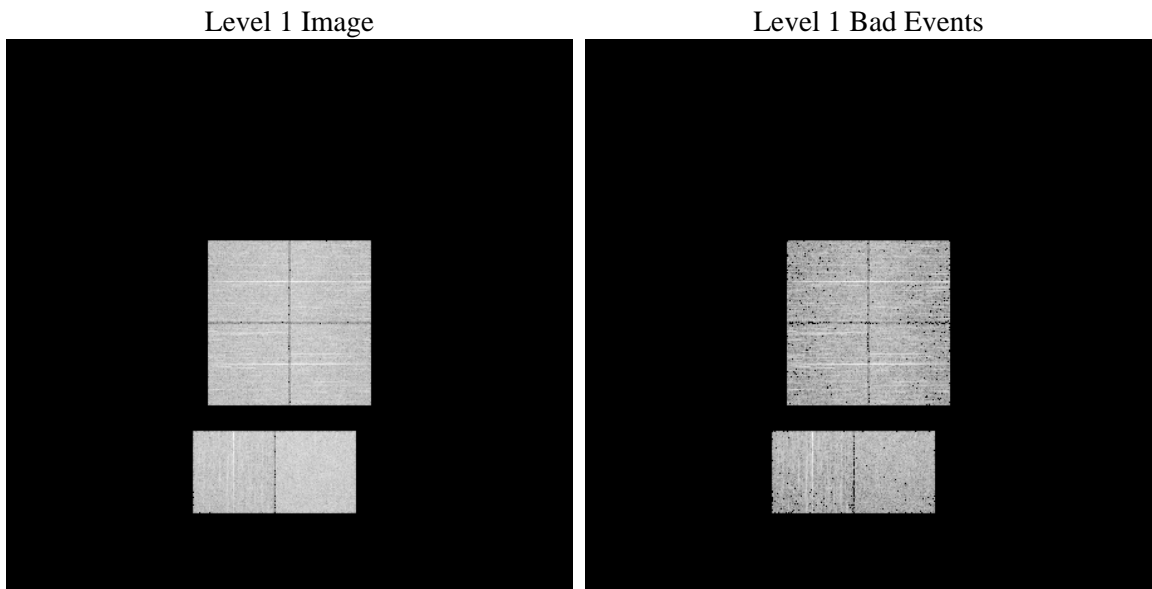
# 1 Front

seq_num	&#160	Sequence number
obs_id	56523	Observation id
title	ACIS-012367 diagnostics	Proposal title
observer	CHANDRA engineering request/realtime commanding	Principal investig
object	&#160	Source name
dtcycle	0	&#160
cycle	P	events from which exps? Prim/Second/Both
ra_targ	0.0	Observer's specified target RA [deg]
dec_targ	0.0	Observer's specified target Dec [deg]
ra_nom	127.01598436496	Nominal RA [deg]
dec_nom	-1.2762481753328	Nominal Dec [deg]
roll_nom	23.105246254912	Nominal Roll [deg]
revision	2	Processing version of data
ontime	3413.8925843239	Sum of GTIs [s]
livetime	3370.6638208219	Livetime [s]
ontime0	3413.8515443206	Sum of GTIs [s]
ontime1	3413.8105043173	Sum of GTIs [s]
ontime2	3413.769464314	Sum of GTIs [s]
ontime3	3413.9336243272	Sum of GTIs [s]
ontime6	3413.7284243107	Sum of GTIs [s]
ontime7	3413.8925843239	Sum of GTIs [s]
l2events	177692	Number of level 2 events

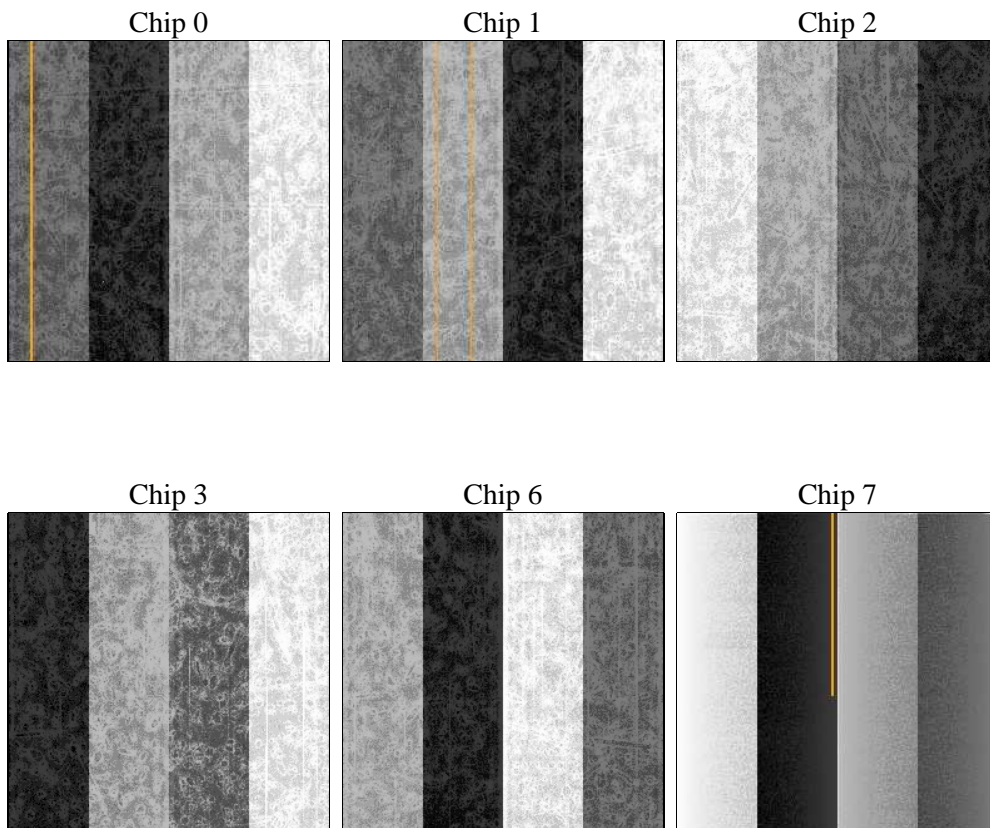
## 2 OBI

### 2.1 OBI

#### 2.1.1 Images



#### 2.1.2 Bias



### 2.1.3 Parameters

obi_num	0	Obi number	sched_exp_time	0.0	[s] Scheduled observation exposure time
ascdsver	8.4.5	Processing system revision	ontime	3413.8925843239	Sum of GTIs [s]
caldsver	4.4.10	&#160	ontime0	3413.8515443206	Sum of GTIs [s]
date	2012-06-19T23:43:09	Date and time of file creation	ontime1	3413.8105043173	Sum of GTIs [s]
revision	2	Processing version of data	ontime2	3413.769464314	Sum of GTIs [s]
			ontime3	3413.9336243272	Sum of GTIs [s]
			ontime6	3413.7284243107	Sum of GTIs [s]
			ontime7	3413.8925843239	Sum of GTIs [s]
			l1events	374678	Number of level 1 events

### 2.1.4 Events

	ccd 0	ccd 1	ccd 2	ccd 3	ccd 6	ccd 7		ccd 0	ccd 1	ccd 2	ccd 3	ccd 6	ccd 7
level 1 events	58001	59453	60554	61068	60877	74725	grade 0 events	15002	14856	15268	15560	15330	7852
rejected events	29599	30985	32337	32505	31549	29895		25%	24%	25%	25%	25%	10%
rejected %	51%	52%	53%	53%	51%	40%	grade 1 events	122	95	123	122	97	65
								0%	0%	0%	0%	0%	0%
							grade 2 events	5143	5450	4893	5036	5361	9749
								8%	9%	8%	8%	8%	13%
							grade 3 events	1954	1851	2048	1901	1910	4135
								3%	3%	3%	3%	3%	5%
							grade 4 events	1937	1847	1959	1996	1911	4192
								3%	3%	3%	3%	3%	5%
							grade 5 events	1693	1834	1652	1927	1786	4911
								2%	3%	2%	3%	2%	6%
							grade 6 events	4401	4499	4078	4108	4843	18953
								7%	7%	6%	6%	7%	25%
							grade 7 events	27749	29021	30533	30418	29639	24868
								47%	48%	50%	49%	48%	33%

## 2.2 Compared Parameters

Parameter	Planned	Actual	Parameter	Planned	Actual
Instrument	ACIS	ACIS	Obspar format version number	7	7
Detector	ACIS-012367	ACIS-012367	Obspar file type	PREDICTED	ACTUAL
Grating	NONE	NONE	Obspar update status	NONE	UPDATED
Data mode	FAINT	FAINT	Number of optional ACIS chips dropped	0	0
Observation mode	SECONDARY	SECONDARY	On-chip summing requested	N	N
[deg] Pointing RA	0	127.0159843649637	Subarray requested	NONE	NONE
[deg] Pointing Dec	0	-1.276248175332793	Alternating exposures requested	N	N
[deg] Pointing Roll	0.0	23.10524625491206	[s] Primary exposure time	3.2	3.2
[mm] SIM focus pos	-1.429586	-0.6828225247311905			
[mm] SIM defocus	0.1037507710433287	0.8505141146731063			
[mm] SIM translation stage pos	250.455976	250.466033080201			
[mm] SIM translation stage offset	0	-0.01005468664627074			
[s] Observation start time (MET)	379938158.912246	379938157.88725			
Observation start date	2010-01-15T10:22:39	2010-01-15T10:22:37			
[s] Observation end time (MET)	379945051.012594	379945049.9876			
Observation end date	2010-01-15T12:17:31	2010-01-15T12:17:29			
Read mode	TIMED	TIMED			

## **2.3 Star Slots**

## **2.4 FID Slots**

## **A Summary**

### **A.1 Status**

V&V Scientist	Jen Lauer
V&V Date (YYYY-MM-DD)	2012.06.25
V&V Edition	1
V&V Disposition and Status	OK
V&V Charge Time	3.4138925843239

### **A.2 Comments**