

# V&V Reference Report

## L2 ASCDS Version : 8.4.5

Observation 56463 - L2 Version 2  
Chandra X-Ray Center

L2 Processing Date : Jun 21 2012

## Contents

<b>1</b>	<b>Front</b>	<b>2</b>
<b>2</b>	<b>OBI</b>	<b>3</b>
2.1	OBI . . . . .	3
2.1.1	Images . . . . .	3
2.1.2	Bias . . . . .	3
2.1.3	Parameters . . . . .	4
2.1.4	Events . . . . .	4
2.2	Compared Parameters . . . . .	5
2.3	Star Slots . . . . .	6
2.4	FID Slots . . . . .	6
<b>A</b>	<b>Summary</b>	<b>7</b>
A.1	Status . . . . .	7
A.2	Comments . . . . .	7

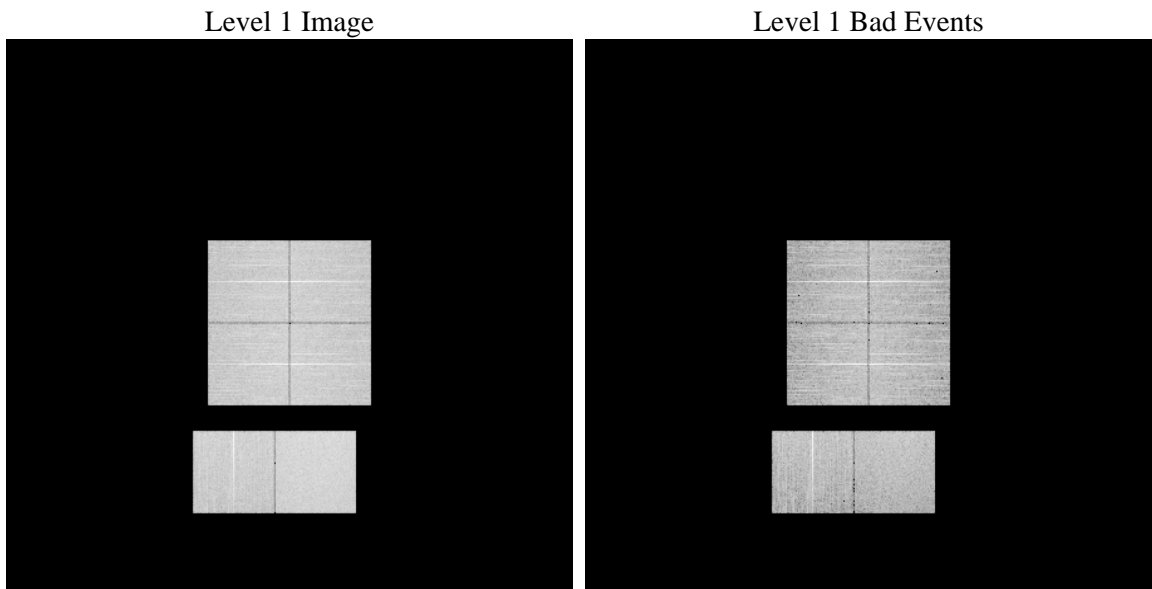
# 1 Front

seq_num	&#160	Sequence number
obs_id	56463	Observation id
title	ACIS-012367 diagnostics	Proposal title
observer	CHANDRA engineering request/realtime commanding	Principal investig
object	&#160	Source name
dtcycle	0	&#160
cycle	P	events from which exps? Prim/Second/Both
ra_targ	0.0	Observer's specified target RA [deg]
dec_targ	0.0	Observer's specified target Dec [deg]
ra_nom	145.02088421853	Nominal RA [deg]
dec_nom	-2.9803272483085	Nominal Dec [deg]
roll_nom	10.507389189154	Nominal Roll [deg]
revision	2	Processing version of data
ontime	8281.5999692082	Sum of GTIs [s]
livetime	8176.7333638173	Livetime [s]
ontime0	8281.5999692082	Sum of GTIs [s]
ontime1	8281.5999692082	Sum of GTIs [s]
ontime2	8281.5999692082	Sum of GTIs [s]
ontime3	8281.5999692082	Sum of GTIs [s]
ontime6	8281.5866224766	Sum of GTIs [s]
ontime7	8281.5999692082	Sum of GTIs [s]
l2events	420977	Number of level 2 events

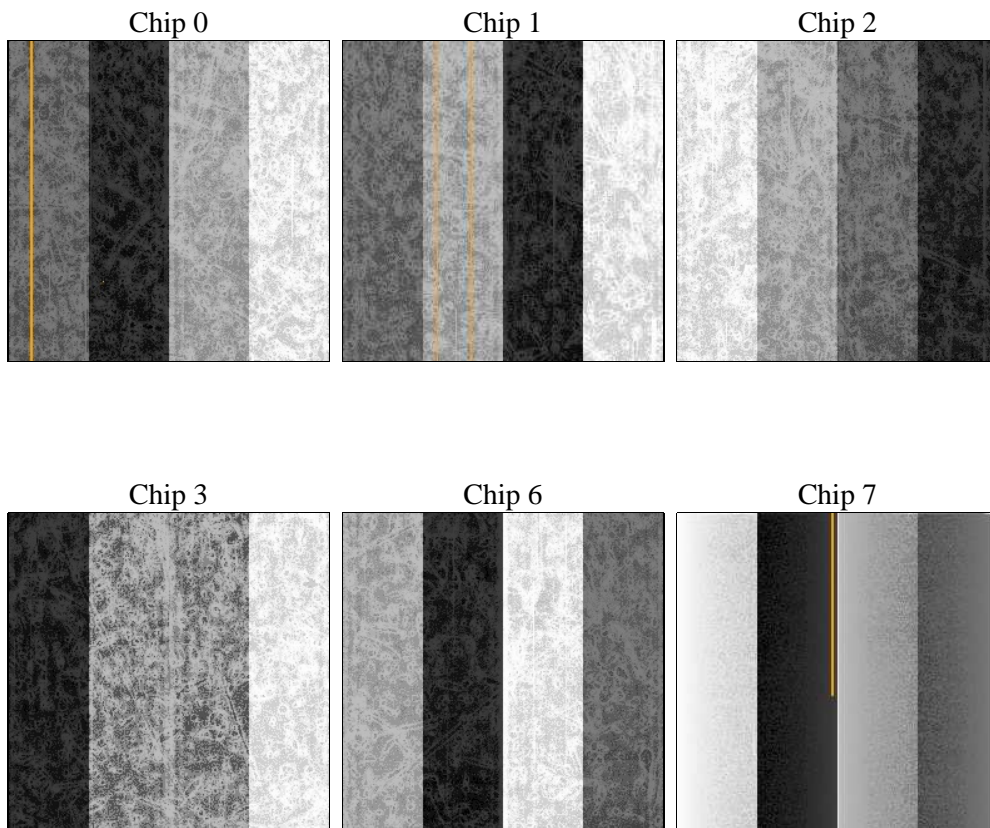
## 2 OBI

### 2.1 OBI

#### 2.1.1 Images



#### 2.1.2 Bias



### 2.1.3 Parameters

obi_num	0	Obi number	sched_exp_time	0.0	[s] Scheduled observation exposure time
ascdsver	8.4.5	Processing system revision	ontime	8281.5999692082	Sum of GTIs [s]
caldsver	4.4.10	&#160	ontime0	8281.5999692082	Sum of GTIs [s]
date	2012-06-21T04:42:12	Date and time of file creation	ontime1	8281.5999692082	Sum of GTIs [s]
revision	2	Processing version of data	ontime2	8281.5999692082	Sum of GTIs [s]
			ontime3	8281.5999692082	Sum of GTIs [s]
			ontime6	8281.5866224766	Sum of GTIs [s]
			ontime7	8281.5999692082	Sum of GTIs [s]
			l1events	866783	Number of level 1 events

### 2.1.4 Events

	ccd 0	ccd 1	ccd 2	ccd 3	ccd 6	ccd 7		ccd 0	ccd 1	ccd 2	ccd 3	ccd 6	ccd 7
level 1 events	135157	134383	139874	140372	141838	175159	grade 0 events	36096	35203	36444	36664	36394	18488
rejected events	67489	66702	72328	72644	72112	70270		26%	26%	26%	26%	25%	10%
rejected %	49%	49%	51%	51%	50%	40%	grade 1 events	249	219	273	259	229	157
								0%	0%	0%	0%	0%	0%
							grade 2 events	12294	13009	11903	11728	12467	22803
								9%	9%	8%	8%	8%	13%
							grade 3 events	4587	4398	4693	4707	4600	9518
								3%	3%	3%	3%	3%	5%
							grade 4 events	4573	4498	4706	4797	4635	9582
								3%	3%	3%	3%	3%	5%
							grade 5 events	4163	4153	3822	4498	4217	11196
								3%	3%	2%	3%	2%	6%
							grade 6 events	10150	10599	9826	9856	11651	44530
								7%	7%	7%	7%	8%	25%
							grade 7 events	63045	62304	68207	67863	67645	58885
								46%	46%	48%	48%	47%	33%

## 2.2 Compared Parameters

Parameter	Planned	Actual	Parameter	Planned	Actual
Instrument	ACIS	ACIS	Obspar format version number	7	7
Detector	ACIS-012367	ACIS-012367	Obspar file type	PREDICTED	ACTUAL
Grating	NONE	NONE	Obspar update status	NONE	UPDATED
Data mode	FAINT	FAINT	Number of optional ACIS chips dropped	0	0
Observation mode	SECONDARY	SECONDARY	On-chip summing requested	N	N
[deg] Pointing RA	0	145.0208842185255	Subarray requested	NONE	NONE
[deg] Pointing Dec	0	-2.980327248308457	Alternating exposures requested	N	N
[deg] Pointing Roll	0.0	10.50738918915433	[s] Primary exposure time	3.2	3.2
[mm] SIM focus pos	-1.429586	-0.7809083437167272			
[mm] SIM defocus	0.1037507710433287	0.7524282956875696			
[mm] SIM translation stage pos	250.455976	250.466033080201			
[mm] SIM translation stage offset	0	-0.01005468664627074			
[s] Observation start time (MET)	381989946.616168	381989945.59116			
Observation start date	2010-02-08T04:19:07	2010-02-08T04:19:05			
[s] Observation end time (MET)	381999552.916654	381999551.89165			
Observation end date	2010-02-08T06:59:13	2010-02-08T06:59:11			
Read mode	TIMED	TIMED			

## 2.3 Star Slots

## 2.4 FID Slots

## A Summary

### A.1 Status

V&V Scientist	Jen Lauer
V&V Date (YYYY-MM-DD)	2012.06.27
V&V Edition	1
V&V Disposition and Status	OK
V&V Charge Time	8.2815999692082

### A.2 Comments