

V&V Reference Report

L2 ASCDS Version : 8.4.5

Observation 56432 - L2 Version 3
Chandra X-Ray Center

L2 Processing Date : Jun 21 2012

Contents

1	Front	2
2	OBI	3
2.1	OBI	3
2.1.1	Images	3
2.1.2	Bias	3
2.1.3	Parameters	4
2.1.4	Events	4
2.2	Compared Parameters	5
2.3	Star Slots	6
2.4	FID Slots	6
A	Summary	7
A.1	Status	7
A.2	Comments	7

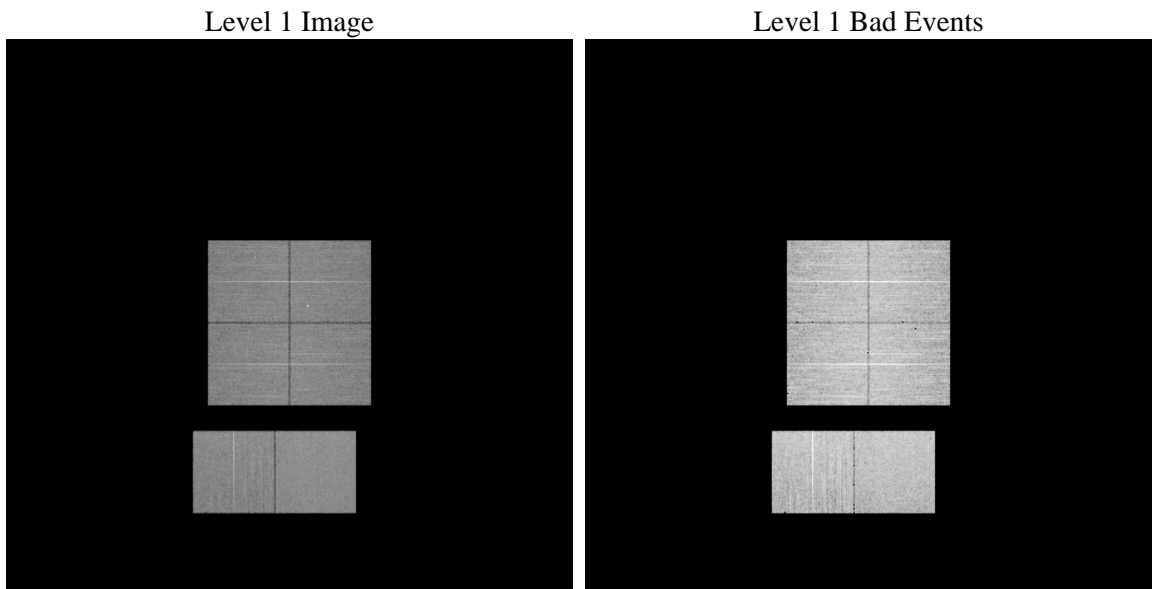
1 Front

seq_num	 	Sequence number
obs_id	56432	Observation id
title	ACIS-012367 diagnostics	Proposal title
observer	CHANDRA engineering request/realtime commanding	Principal investig
object	 	Source name
dtcycle	0	
cycle	P	events from which exps? Prim/Second/Both
ra_targ	0.0	Observer's specified target RA [deg]
dec_targ	0.0	Observer's specified target Dec [deg]
ra_nom	147.67745924873	Nominal RA [deg]
dec_nom	2.0478942505727	Nominal Dec [deg]
roll_nom	92.279930367787	Nominal Roll [deg]
revision	3	Processing version of data
ontime	8038.3999701142	Sum of GTIs [s]
livetime	7936.6129095493	Livetime [s]
ontime0	8038.3999701142	Sum of GTIs [s]
ontime1	8038.3999701142	Sum of GTIs [s]
ontime2	8038.3999701142	Sum of GTIs [s]
ontime3	8038.3999701142	Sum of GTIs [s]
ontime6	8038.3999701142	Sum of GTIs [s]
ontime7	8038.3999701142	Sum of GTIs [s]
l2events	405257	Number of level 2 events

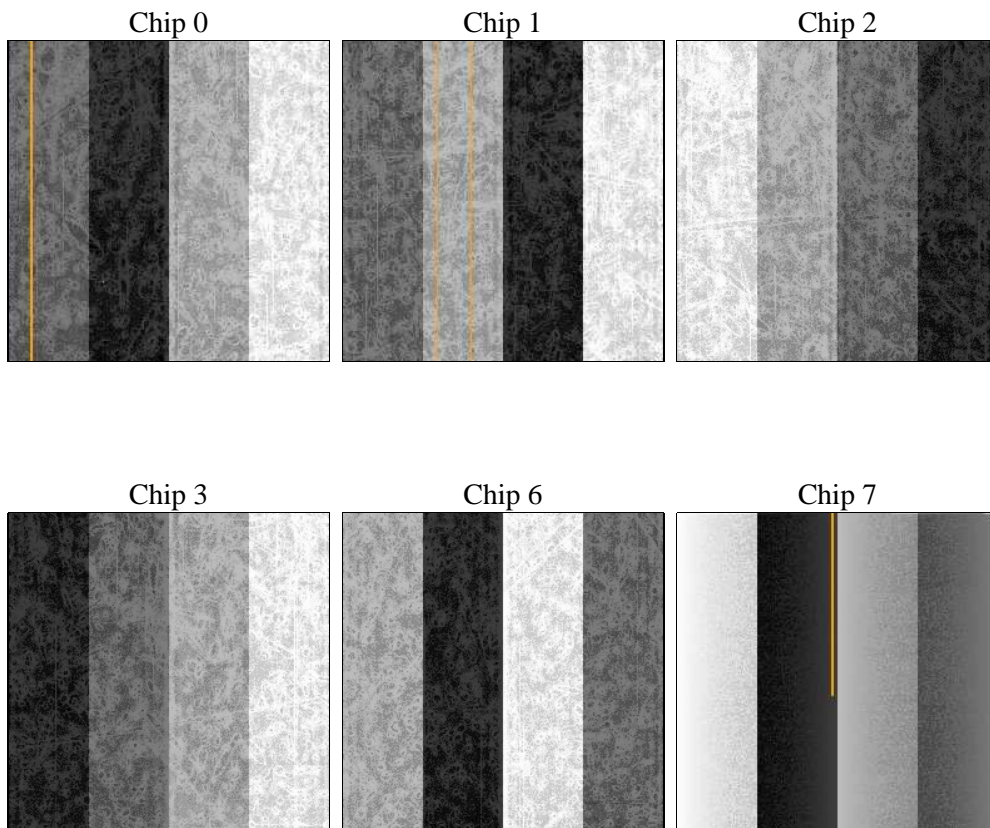
2 OBI

2.1 OBI

2.1.1 Images



2.1.2 Bias



2.1.3 Parameters

obi_num	0	Obi number	sched_exp_time	0.0	[s] Scheduled observation exposure time
ascdsver	8.4.5	Processing system revision	ontime	8038.3999701142	Sum of GTIs [s]
caldsver	4.4.10	 	ontime0	8038.3999701142	Sum of GTIs [s]
date	2012-06-21T18:41:54	Date and time of file creation	ontime1	8038.3999701142	Sum of GTIs [s]
revision	3	Processing version of data	ontime2	8038.3999701142	Sum of GTIs [s]
			ontime3	8038.3999701142	Sum of GTIs [s]
			ontime6	8038.3999701142	Sum of GTIs [s]
			ontime7	8038.3999701142	Sum of GTIs [s]
			l1events	866115	Number of level 1 events

2.1.4 Events

	ccd 0	ccd 1	ccd 2	ccd 3	ccd 6	ccd 7		ccd 0	ccd 1	ccd 2	ccd 3	ccd 6	ccd 7
level 1 events	133783	135548	139031	139728	143609	174416	grade 0 events	35238	37012	35969	36248	36040	18828
rejected events	69053	68176	74370	74624	76091	72721		26%	27%	25%	25%	25%	10%
rejected %	51%	50%	53%	53%	52%	41%	grade 1 events	256	236	285	293	233	135
								0%	0%	0%	0%	0%	0%
							grade 2 events	12387	12776	11752	11875	12545	22561
								9%	9%	8%	8%	8%	12%
							grade 3 events	4526	4419	4630	4573	4702	9770
								3%	3%	3%	3%	3%	5%
							grade 4 events	4459	4456	4559	4665	4470	9632
								3%	3%	3%	3%	3%	5%
							grade 5 events	4030	4248	3910	4475	4489	11401
								3%	3%	2%	3%	3%	6%
							grade 6 events	10111	10668	9696	9648	11766	43835
								7%	7%	6%	6%	8%	25%
							grade 7 events	62776	61733	68230	67951	69364	58254
								46%	45%	49%	48%	48%	33%

2.2 Compared Parameters

Parameter	Planned	Actual
Instrument	ACIS	ACIS
Detector	ACIS-012367	ACIS-012367
Grating	NONE	NONE
Data mode	FAINT	FAINT
Observation mode	SECONDARY	SECONDARY
[deg] Pointing RA	0	147.677459248729
[deg] Pointing Dec	0	2.047894250572698
[deg] Pointing Roll	0.0	92.27993036778699
[mm] SIM focus pos	-0.68282252473119	-0.68282252473119
[mm] SIM defocus	0.8505140384245534	0.8505140384245534
[mm] SIM translation stage pos	250.4660330802	250.4660330802
[mm] SIM translation stage offset	-0.01005726120527584	-0.01005726120527584
[s] Observation start time (MET)	383360693.535642	383360693.535642
Observation start date	2010-02-24T01:04:54	2010-02-24T01:04:53
[s] Observation end time (MET)	383370239.243296	383370239.243296
Observation end date	2010-02-24T03:43:59	2010-02-24T03:43:59
Read mode	TIMED	TIMED

Parameter	Planned	Actual
Obspar format version number	7	7
Obspar file type	PREDICTED	ACTUAL
Obspar update status	OVERRIDE	OVERRIDE
Number of optional ACIS chips dropped	0	0
On-chip summing requested	N	N
Subarray requested	NONE	NONE
Alternating exposures requested	N	N
[s] Primary exposure time	3.2	3.2

2.3 Star Slots

2.4 FID Slots

A Summary

A.1 Status

V&V Scientist	Jen Lauer
V&V Date (YYYY-MM-DD)	2012.06.27
V&V Edition	1
V&V Disposition and Status	OK
V&V Charge Time	8.0383999701142

A.2 Comments