

# V&V Reference Report

## L2 ASCDS Version : 8.4.5

Observation 56388 - L2 Version 2  
Chandra X-Ray Center

L2 Processing Date : Jun 22 2012

## Contents

<b>1</b>	<b>Front</b>	<b>2</b>
<b>2</b>	<b>OBI</b>	<b>3</b>
2.1	OBI . . . . .	3
2.1.1	Images . . . . .	3
2.1.2	Bias . . . . .	3
2.1.3	Parameters . . . . .	4
2.1.4	Events . . . . .	4
2.2	Compared Parameters . . . . .	5
2.3	Star Slots . . . . .	6
2.4	FID Slots . . . . .	6
<b>A</b>	<b>Summary</b>	<b>7</b>
A.1	Status . . . . .	7
A.2	Comments . . . . .	7

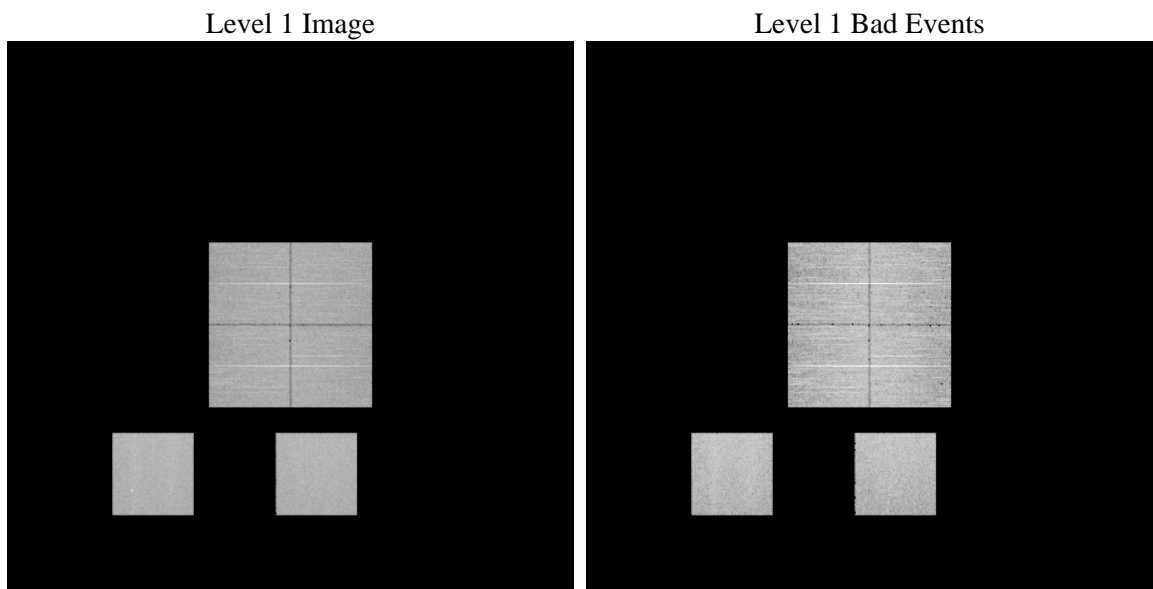
# 1 Front

seq_num	&#160	Sequence number
obs_id	56388	Observation id
title	ACIS-012357 diagnostics	Proposal title
observer	CHANDRA engineering request/realtime commanding	Principal investig
object	&#160	Source name
dtcycle	0	&#160
cycle	P	events from which exps? Prim/Second/Both
ra_targ	0.0	Observer's specified target RA [deg]
dec_targ	0.0	Observer's specified target Dec [deg]
ra_nom	160.02917915405	Nominal RA [deg]
dec_nom	-18.503311406514	Nominal Dec [deg]
roll_nom	317.94120420003	Nominal Roll [deg]
revision	2	Processing version of data
ontime	8355.1999689341	Sum of GTIs [s]
livetime	8249.40139603	Livetime [s]
ontime0	8355.1999689341	Sum of GTIs [s]
ontime1	8355.1999689341	Sum of GTIs [s]
ontime2	8351.9589585662	Sum of GTIs [s]
ontime3	8355.1999689341	Sum of GTIs [s]
ontime5	8355.1999689341	Sum of GTIs [s]
ontime7	8355.1999689341	Sum of GTIs [s]
l2events	437888	Number of level 2 events

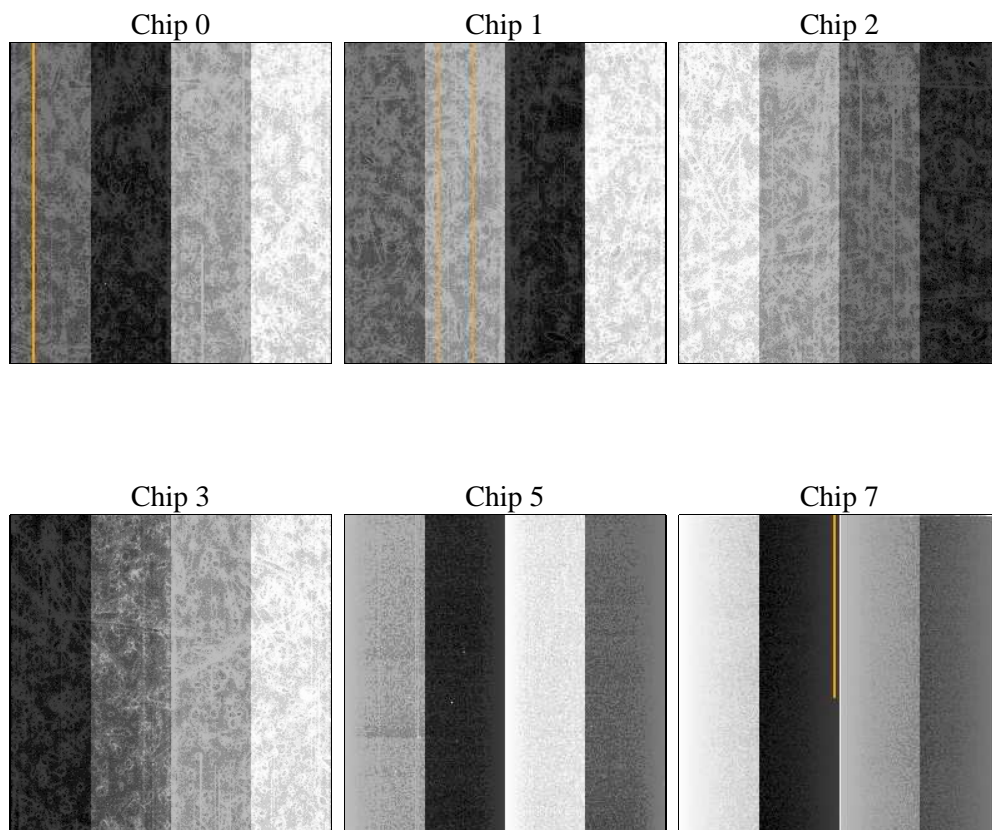
## 2 OBI

### 2.1 OBI

#### 2.1.1 Images



#### 2.1.2 Bias



### 2.1.3 Parameters

obi_num	0	Obi number	sched_exp_time	0.0	[s] Scheduled observation exposure time
ascdsver	8.4.5	Processing system revision	ontime	8355.1999689341	Sum of GTIs [s]
caldsver	4.4.10	&#160	ontime0	8355.1999689341	Sum of GTIs [s]
date	2012-06-22T20:04:00	Date and time of file creation	ontime1	8355.1999689341	Sum of GTIs [s]
revision	2	Processing version of data	ontime2	8351.9589585662	Sum of GTIs [s]
			ontime3	8355.1999689341	Sum of GTIs [s]
			ontime5	8355.1999689341	Sum of GTIs [s]
			ontime7	8355.1999689341	Sum of GTIs [s]
			l1events	895790	Number of level 1 events

### 2.1.4 Events

	ccd 0	ccd 1	ccd 2	ccd 3	ccd 5	ccd 7		ccd 0	ccd 1	ccd 2	ccd 3	ccd 5	ccd 7
level 1 events	133554	134986	140078	140256	175472	171444	grade 0 events	34350	32412	35512	35791	10528	17000
rejected events	68930	70084	75801	75231	74930	71653		25%	24%	25%	25%	5%	9%
rejected %	51%	51%	54%	53%	42%	41%	grade 1 events	230	172	278	258	222	126
								0%	0%	0%	0%	0%	0%
							grade 2 events	12326	14294	11012	11221	38147	22446
								9%	10%	7%	8%	21%	13%
							grade 3 events	4380	4164	4558	4398	3748	8538
								3%	3%	3%	3%	2%	4%
							grade 4 events	4278	4111	4393	4526	3589	8494
								3%	3%	3%	3%	2%	4%
							grade 5 events	3710	3701	3710	4266	8358	10211
								2%	2%	2%	3%	4%	5%
							grade 6 events	10149	10732	9589	9908	45783	44575
								7%	7%	6%	7%	26%	25%
							grade 7 events	64131	65400	71026	69888	65097	60054
								48%	48%	50%	49%	37%	35%

## 2.2 Compared Parameters

Parameter	Planned	Actual	Parameter	Planned	Actual
Instrument	ACIS	ACIS	Obspar format version number	7	7
Detector	ACIS-012357	ACIS-012357	Obspar file type	PREDICTED	ACTUAL
Grating	NONE	NONE	Obspar update status	NONE	UPDATED
Data mode	FAINT	FAINT	Number of optional ACIS chips dropped	0	0
Observation mode	SECONDARY	SECONDARY	On-chip summing requested	N	N
[deg] Pointing RA	0	160.029179154055	Subarray requested	NONE	NONE
[deg] Pointing Dec	0	-18.50331140651351	Alternating exposures requested	N	N
[deg] Pointing Roll	0.0	317.9412042000301	[s] Primary exposure time	3.2	3.2
[mm] SIM focus pos	-1.429586	-0.6828225247311905			
[mm] SIM defocus	0.1037507710433287	0.8505141146731063			
[mm] SIM translation stage pos	250.455976	250.466033080201			
[mm] SIM translation stage offset	0	-0.01005468664627074			
[s] Observation start time (MET)	385228415.830401	385228414.80539			
Observation start date	2010-03-17T15:53:36	2010-03-17T15:53:34			
[s] Observation end time (MET)	385239887.630984	385239886.60598			
Observation end date	2010-03-17T19:04:48	2010-03-17T19:04:46			
Read mode	TIMED	TIMED			

## **2.3 Star Slots**

## **2.4 FID Slots**

## **A Summary**

### **A.1 Status**

V&V Scientist	Jen Lauer
V&V Date (YYYY-MM-DD)	2012.06.28
V&V Edition	1
V&V Disposition and Status	OK
V&V Charge Time	8.3551999689341

### **A.2 Comments**