

V&V Reference Report

L2 ASCDS Version : 8.4.5

Observation 56379 - L2 Version 2
Chandra X-Ray Center

L2 Processing Date : Jun 23 2012

Contents

1	Front	2
2	OBI	3
2.1	OBI	3
2.1.1	Images	3
2.1.2	Bias	3
2.1.3	Parameters	4
2.1.4	Events	4
2.2	Compared Parameters	5
2.3	Star Slots	6
2.4	FID Slots	6
A	Summary	7
A.1	Status	7
A.2	Comments	7

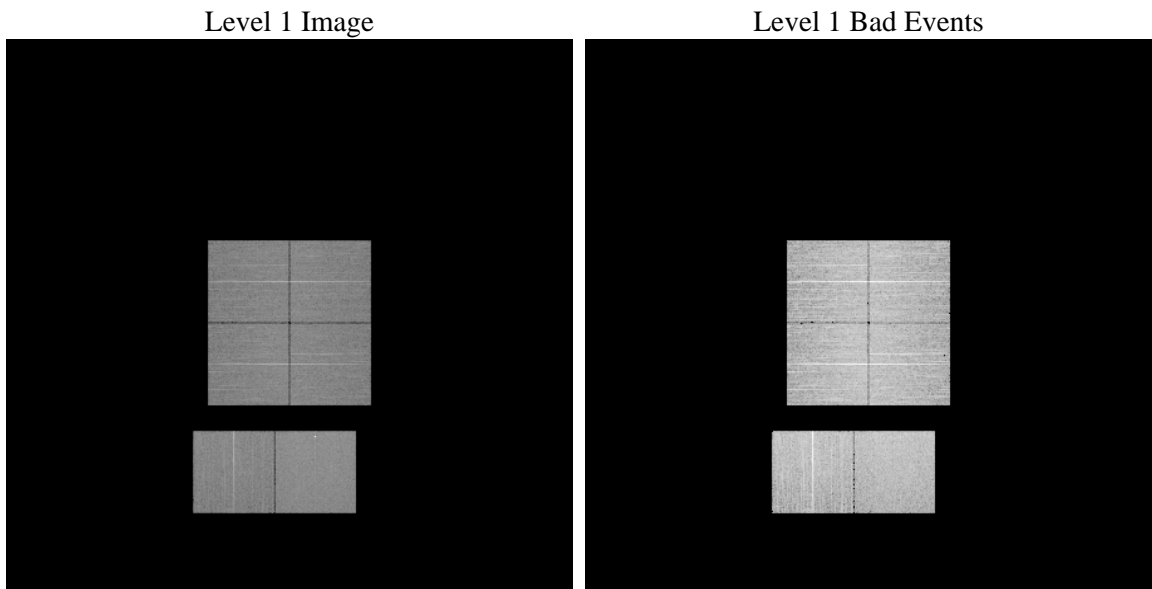
1 Front

seq_num	 	Sequence number
obs_id	56379	Observation id
title	ACIS-012367 diagnostics	Proposal title
observer	CHANDRA engineering request/realtime commanding	Principal investig
object	 	Source name
dtcycle	0	
cycle	P	events from which exps? Prim/Second/Both
ra_targ	0.0	Observer's specified target RA [deg]
dec_targ	0.0	Observer's specified target Dec [deg]
ra_nom	204.9926871982	Nominal RA [deg]
dec_nom	-8.9722750896262	Nominal Dec [deg]
roll_nom	71.763192423279	Nominal Roll [deg]
revision	2	Processing version of data
ontime	8457.5999685526	Sum of GTIs [s]
livetime	8350.5047451955	Livetime [s]
ontime0	8457.5999685526	Sum of GTIs [s]
ontime1	8457.5999685526	Sum of GTIs [s]
ontime2	8457.5999685526	Sum of GTIs [s]
ontime3	8454.3589977622	Sum of GTIs [s]
ontime6	8457.5999685526	Sum of GTIs [s]
ontime7	8457.5999685526	Sum of GTIs [s]
l2events	409647	Number of level 2 events

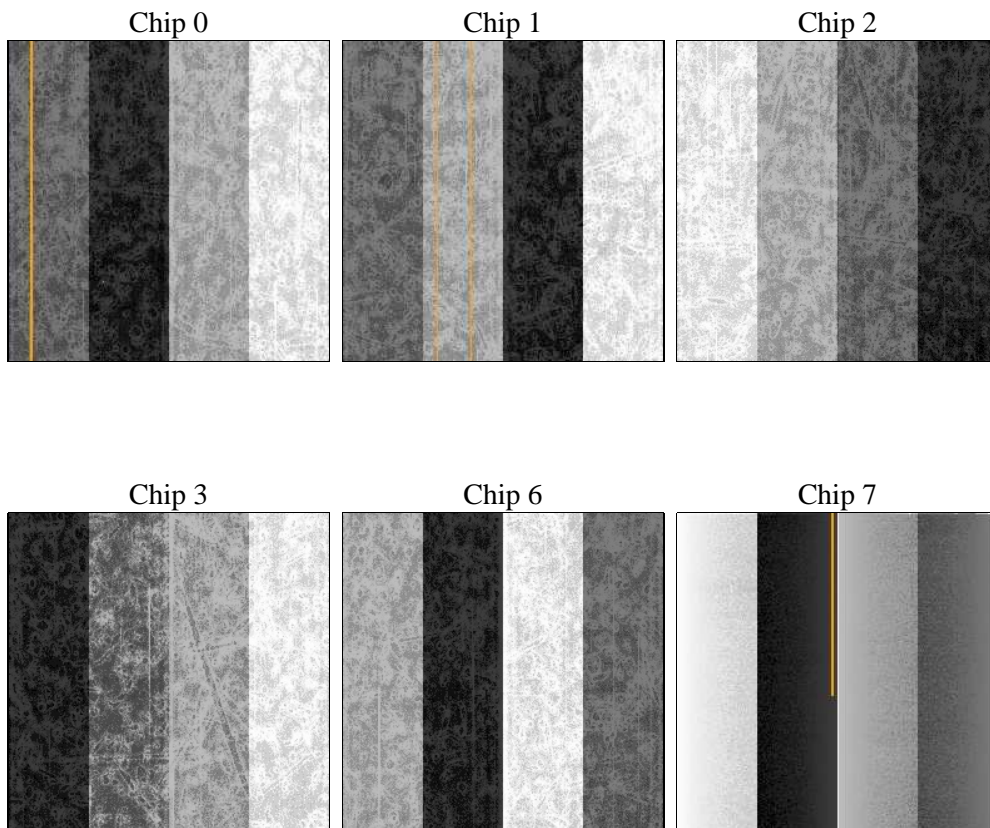
2 OBI

2.1 OBI

2.1.1 Images



2.1.2 Bias



2.1.3 Parameters

obi_num	1	Obi number	sched_exp_time	0.0	[s] Scheduled observation exposure time
ascdsver	8.4.5	Processing system revision	ontime	8457.5999685526	Sum of GTIs [s]
caldsver	4.4.10	 	ontime0	8457.5999685526	Sum of GTIs [s]
date	2012-06-23T06:23:09	Date and time of file creation	ontime1	8457.5999685526	Sum of GTIs [s]
revision	2	Processing version of data	ontime2	8457.5999685526	Sum of GTIs [s]
			ontime3	8454.3589977622	Sum of GTIs [s]
			ontime6	8457.5999685526	Sum of GTIs [s]
			ontime7	8457.5999685526	Sum of GTIs [s]
			l1events	867019	Number of level 1 events

2.1.4 Events

	ccd 0	ccd 1	ccd 2	ccd 3	ccd 6	ccd 7		ccd 0	ccd 1	ccd 2	ccd 3	ccd 6	ccd 7
level 1 events	134094	135336	141731	138232	143091	174535	grade 0 events	34256	33655	35845	35893	34295	19932
rejected events	68943	69032	76048	72606	75074	69899		25%	24%	25%	25%	23%	11%
rejected %	51%	51%	53%	52%	52%	40%	grade 1 events	224	191	287	247	196	120
								0%	0%	0%	0%	0%	0%
							grade 2 events	11949	13361	11001	11287	13400	22670
								8%	9%	7%	8%	9%	12%
							grade 3 events	4518	4239	4607	4374	4269	9000
								3%	3%	3%	3%	2%	5%
							grade 4 events	4449	4193	4615	4435	4166	8550
								3%	3%	3%	3%	2%	4%
							grade 5 events	3956	4000	3771	4227	3950	10611
								2%	2%	2%	3%	2%	6%
							grade 6 events	9979	10856	9615	9637	11887	44484
								7%	8%	6%	6%	8%	25%
							grade 7 events	64763	64841	71990	68132	70928	59168
								48%	47%	50%	49%	49%	33%

2.2 Compared Parameters

Parameter	Planned	Actual	Parameter	Planned	Actual
Instrument	ACIS	ACIS	Obspar format version number	7	7
Detector	ACIS-012367	ACIS-012367	Obspar file type	PREDICTED	ACTUAL
Grating	NONE	NONE	Obspar update status	NONE	UPDATED
Data mode	FAINT	FAINT	Number of optional ACIS chips dropped	0	0
Observation mode	SECONDARY	SECONDARY	On-chip summing requested	N	N
[deg] Pointing RA	0	204.9926871981994	Subarray requested	NONE	NONE
[deg] Pointing Dec	0	-8.972275089626214	Alternating exposures requested	N	N
[deg] Pointing Roll	0.0	71.76319242327855	[s] Primary exposure time	3.2	3.2
[mm] SIM focus pos	-1.429586	-0.6828225247311905			
[mm] SIM defocus	0.1037507710433287	0.8505141146731063			
[mm] SIM translation stage pos	250.455976	250.466033080201			
[mm] SIM translation stage offset	0	-0.01005468664627074			
[s] Observation start time (MET)	385684532.653525	385684531.62855			
Observation start date	2010-03-22T22:35:33	2010-03-22T22:35:31			
[s] Observation end time (MET)	385694741.654043	385694740.62907			
Observation end date	2010-03-23T01:25:42	2010-03-23T01:25:40			
Read mode	TIMED	TIMED			

2.3 Star Slots

2.4 FID Slots

A Summary

A.1 Status

V&V Scientist	Beth Sundheim
V&V Date (YYYY-MM-DD)	2012.06.29
V&V Edition	1
V&V Disposition and Status	OK
V&V Charge Time	8.4575999685526

A.2 Comments