

# V&V Reference Report

## L2 ASCDS Version : 8.4.5

Observation 56111 - L2 Version 2  
Chandra X-Ray Center

L2 Processing Date : Jun 30 2012

## Contents

<b>1</b>	<b>Front</b>	<b>2</b>
<b>2</b>	<b>OBI</b>	<b>3</b>
2.1	OBI . . . . .	3
2.1.1	Images . . . . .	3
2.1.2	Bias . . . . .	3
2.1.3	Parameters . . . . .	4
2.1.4	Events . . . . .	4
2.2	Compared Parameters . . . . .	5
2.3	Star Slots . . . . .	6
2.4	FID Slots . . . . .	6
<b>A</b>	<b>Summary</b>	<b>7</b>
A.1	Status . . . . .	7
A.2	Comments . . . . .	7

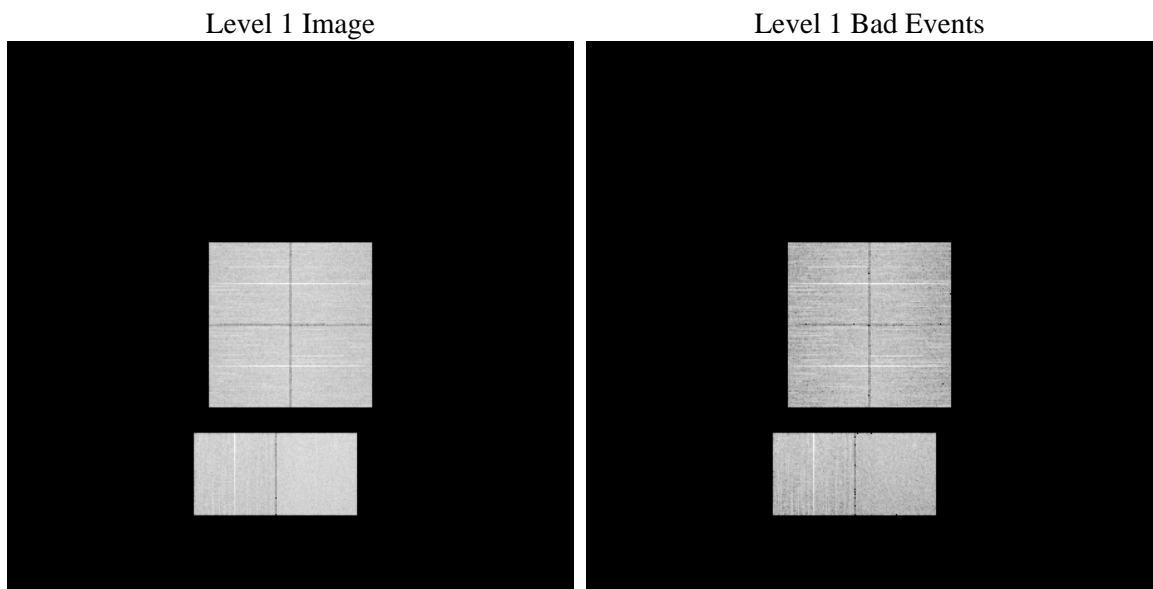
# 1 Front

seq_num	&#160	Sequence number
obs_id	56111	Observation id
title	ACIS-012367 diagnostics	Proposal title
observer	CHANDRA engineering request/realtime commanding	Principal investig
object	&#160	Source name
dtycle	0	&#160
cycle	P	events from which exps? Prim/Second/Both
ra_targ	0.0	Observer's specified target RA [deg]
dec_targ	0.0	Observer's specified target Dec [deg]
ra_nom	301.47592571801	Nominal RA [deg]
dec_nom	5.484256755729	Nominal Dec [deg]
roll_nom	180.45124717677	Nominal Roll [deg]
revision	2	Processing version of data
ontime	8280.2202635407	Sum of GTIs [s]
livetime	8175.3711288137	Livetime [s]
ontime0	8280.1792235374	Sum of GTIs [s]
ontime1	8280.1381835341	Sum of GTIs [s]
ontime2	8280.0971435308	Sum of GTIs [s]
ontime3	8280.261303544	Sum of GTIs [s]
ontime6	8280.0561035275	Sum of GTIs [s]
ontime7	8280.2202635407	Sum of GTIs [s]
l2events	367891	Number of level 2 events

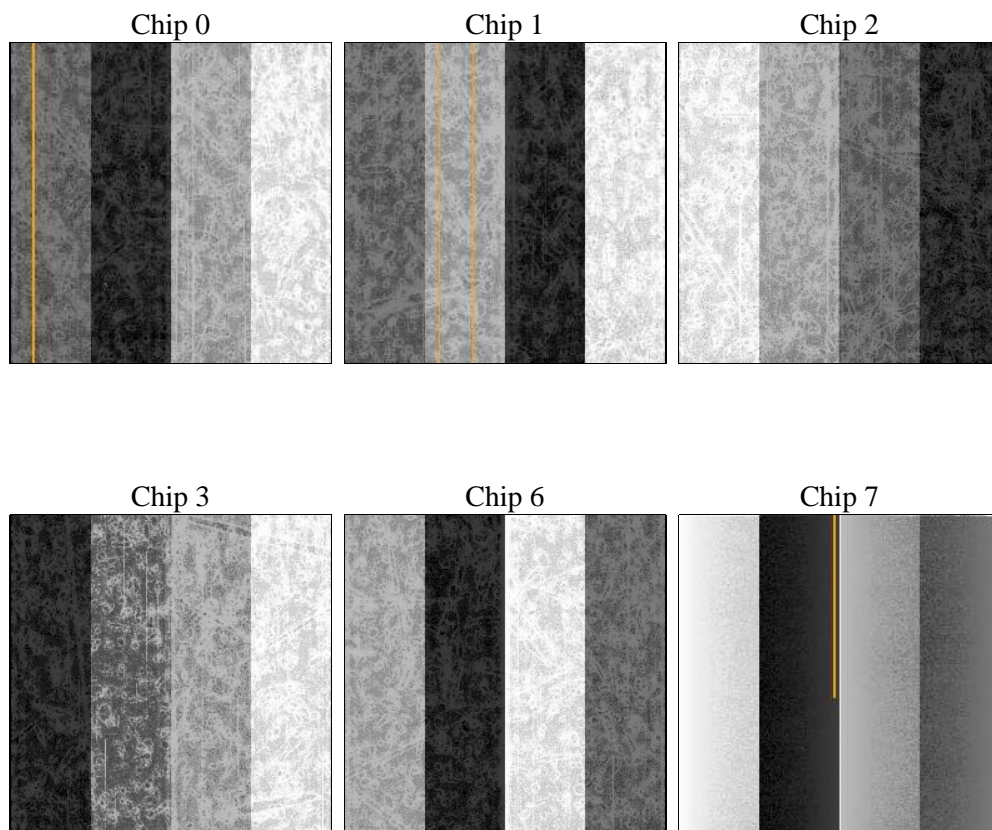
## 2 OBI

### 2.1 OBI

#### 2.1.1 Images



#### 2.1.2 Bias



### 2.1.3 Parameters

obi_num	0	Obi number	sched_exp_time	0.0	[s] Scheduled observation exposure time
ascdsver	8.4.5	Processing system revision	ontime	8280.2202635407	Sum of GTIs [s]
caldsver	4.5.0	&#160	ontime0	8280.1792235374	Sum of GTIs [s]
date	2012-06-30T15:30:33	Date and time of file creation	ontime1	8280.1381835341	Sum of GTIs [s]
revision	2	Processing version of data	ontime2	8280.0971435308	Sum of GTIs [s]
			ontime3	8280.261303544	Sum of GTIs [s]
			ontime6	8280.0561035275	Sum of GTIs [s]
			ontime7	8280.2202635407	Sum of GTIs [s]
			l1events	808871	Number of level 1 events

### 2.1.4 Events

	ccd 0	ccd 1	ccd 2	ccd 3	ccd 6	ccd 7		ccd 0	ccd 1	ccd 2	ccd 3	ccd 6	ccd 7
level 1 events	126645	126292	129663	129716	133683	162872	grade 0 events	30328	27664	31512	31789	27111	15187
rejected events	67861	67212	71415	70919	73682	68766		23%	21%	24%	24%	20%	9%
rejected %	53%	53%	55%	54%	55%	42%	grade 1 events	149	138	213	208	161	139
								0%	0%	0%	0%	0%	0%
							grade 2 events	11526	14300	10046	10349	15052	21047
								9%	11%	7%	7%	11%	12%
							grade 3 events	3746	3524	4007	3846	3359	7955
								2%	2%	3%	2%	2%	4%
							grade 4 events	3792	3629	3953	3978	3429	7390
								2%	2%	3%	3%	2%	4%
							grade 5 events	3586	3471	3329	3953	3607	9739
								2%	2%	2%	3%	2%	5%
							grade 6 events	9392	9963	8730	8835	11050	42527
								7%	7%	6%	6%	8%	26%
							grade 7 events	64126	63603	67873	66758	69914	58888
								50%	50%	52%	51%	52%	36%

## 2.2 Compared Parameters

Parameter	Planned	Actual	Parameter	Planned	Actual
Instrument	ACIS	ACIS	Obspar format version number	7	7
Detector	ACIS-012367	ACIS-012367	Obspar file type	PREDICTED	ACTUAL
Grating	NONE	NONE	Obspar update status	NONE	UPDATED
Data mode	FAINT	FAINT	Number of optional ACIS chips dropped	0	0
Observation mode	SECONDARY	SECONDARY	On-chip summing requested	N	N
[deg] Pointing RA	0	301.4759257180077	Subarray requested	NONE	NONE
[deg] Pointing Dec	0	5.484256755729001	Alternating exposures requested	N	N
[deg] Pointing Roll	0.0	180.4512471767679	[s] Primary exposure time	3.2	3.2
[mm] SIM focus pos	-1.429586	-1.428180813131781			
[mm] SIM defocus	0.1037507710433287	0.1051558262725154			
[mm] SIM translation stage pos	250.455976	250.466033080201			
[mm] SIM translation stage offset	0	-0.01005468664627074			
[s] Observation start time (MET)	396190065.688622	396190064.66363			
Observation start date	2010-07-22T12:47:46	2010-07-22T12:47:44			
[s] Observation end time (MET)	396202964.289281	396202963.26429			
Observation end date	2010-07-22T16:22:44	2010-07-22T16:22:43			
Read mode	TIMED	TIMED			

## **2.3 Star Slots**

## **2.4 FID Slots**

## A Summary

### A.1 Status

V&V Scientist	Jen Lauer
V&V Date (YYYY-MM-DD)	2012.07.09
V&V Edition	1
V&V Disposition and Status	OK
V&V Charge Time	8.2802202635407

### A.2 Comments