

V&V Reference Report

L2 ASCDS Version : 8.4.5

Observation 56021 - L2 Version 2
Chandra X-Ray Center

L2 Processing Date : Jul 3 2012

Contents

1	Front	2
2	OBI	3
2.1	OBI	3
2.1.1	Images	3
2.1.2	Bias	3
2.1.3	Parameters	4
2.1.4	Events	4
2.2	Compared Parameters	5
2.3	Star Slots	6
2.4	FID Slots	6
A	Summary	7
A.1	Status	7
A.2	Comments	7

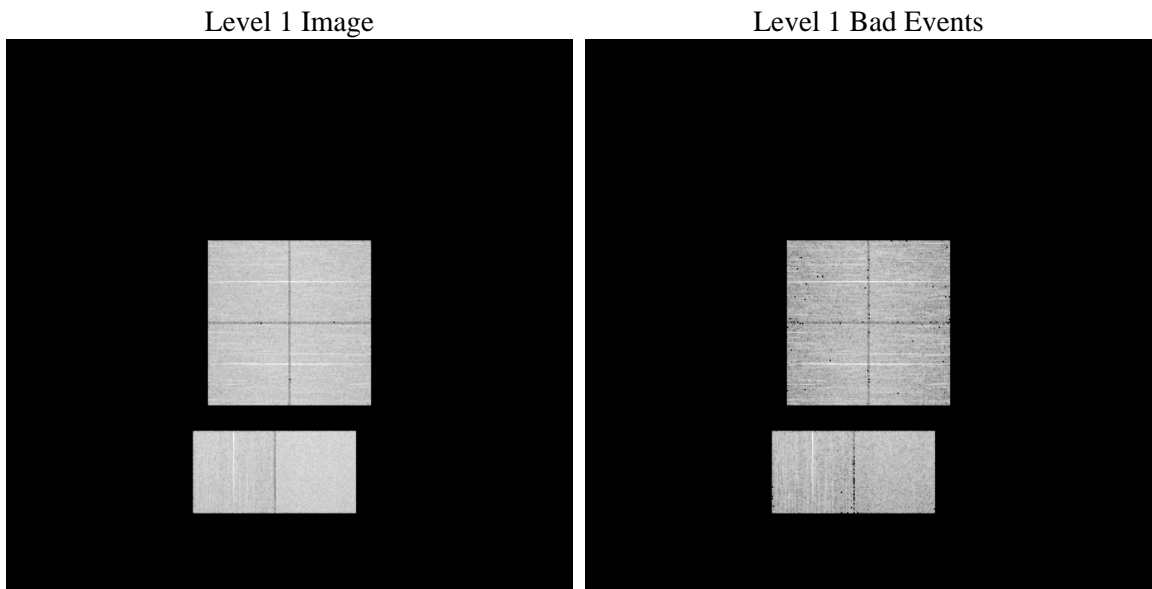
1 Front

seq_num	 	Sequence number
obs_id	56021	Observation id
title	ACIS-012367 diagnostics	Proposal title
observer	CHANDRA engineering request/realtime commanding	Principal investig
object	 	Source name
dtcycle	0	
cycle	P	events from which exps? Prim/Second/Both
ra_targ	0.0	Observer's specified target RA [deg]
dec_targ	0.0	Observer's specified target Dec [deg]
ra_nom	10.013238627053	Nominal RA [deg]
dec_nom	-24.973965653856	Nominal Dec [deg]
roll_nom	32.4377430741	Nominal Roll [deg]
revision	2	Processing version of data
ontime	6443.9060396552	Sum of GTIs [s]
livetime	6362.3094213267	Livetime [s]
ontime0	6443.8649996519	Sum of GTIs [s]
ontime1	6443.8239596486	Sum of GTIs [s]
ontime2	6443.7829196453	Sum of GTIs [s]
ontime3	6443.9470796585	Sum of GTIs [s]
ontime6	6443.741879642	Sum of GTIs [s]
ontime7	6443.9060396552	Sum of GTIs [s]
l2events	284986	Number of level 2 events

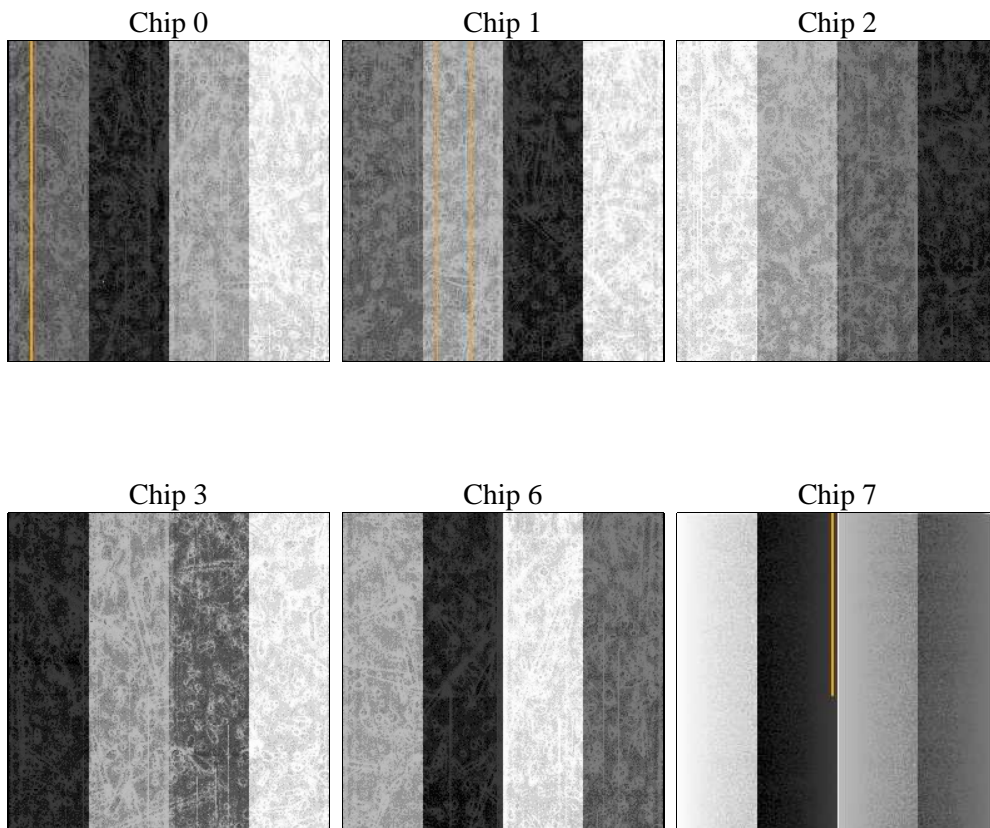
2 OBI

2.1 OBI

2.1.1 Images



2.1.2 Bias



2.1.3 Parameters

obi_num	0	Obi number	sched_exp_time	0.0	[s] Scheduled observation exposure time
ascdsver	8.4.5	Processing system revision	ontime	6443.9060396552	Sum of GTIs [s]
caldbver	4.5.0	 	ontime0	6443.8649996519	Sum of GTIs [s]
date	2012-07-03T12:08:11	Date and time of file creation	ontime1	6443.8239596486	Sum of GTIs [s]
revision	2	Processing version of data	ontime2	6443.7829196453	Sum of GTIs [s]
			ontime3	6443.9470796585	Sum of GTIs [s]
			ontime6	6443.741879642	Sum of GTIs [s]
			ontime7	6443.9060396552	Sum of GTIs [s]
			l1events	595108	Number of level 1 events

2.1.4 Events

	ccd 0	ccd 1	ccd 2	ccd 3	ccd 6	ccd 7		ccd 0	ccd 1	ccd 2	ccd 3	ccd 6	ccd 7
level 1 events	91438	92895	93685	94972	99597	122521	grade 0 events	23852	23580	24417	24779	24440	12670
rejected events	46079	47150	48330	49288	52329	50431		26%	25%	26%	26%	24%	10%
rejected %	50%	50%	51%	51%	52%	41%	grade 1 events	142	137	174	169	133	103
								0%	0%	0%	0%	0%	0%
							grade 2 events	8333	8835	7924	7940	8599	15651
								9%	9%	8%	8%	8%	12%
							grade 3 events	3133	3081	3232	3203	3145	6530
								3%	3%	3%	3%	3%	5%
							grade 4 events	3003	3075	3114	3135	3043	6475
								3%	3%	3%	3%	3%	5%
							grade 5 events	2890	2940	2793	3086	3181	8015
								3%	3%	2%	3%	3%	6%
							grade 6 events	7063	7200	6693	6650	8063	30800
								7%	7%	7%	7%	8%	25%
							grade 7 events	43022	44047	45338	46010	48993	42277
								47%	47%	48%	48%	49%	34%

2.2 Compared Parameters

Parameter	Planned	Actual	Parameter	Planned	Actual
Instrument	ACIS	ACIS	Obspar format version number	7	7
Detector	ACIS-012367	ACIS-012367	Obspar file type	PREDICTED	ACTUAL
Grating	NONE	NONE	Obspar update status	NONE	UPDATED
Data mode	FAINT	FAINT	Number of optional ACIS chips dropped	0	0
Observation mode	SECONDARY	SECONDARY	On-chip summing requested	N	N
[deg] Pointing RA	0	10.0132386270532	Subarray requested	NONE	NONE
[deg] Pointing Dec	0	-24.97396565385564	Alternating exposures requested	N	N
[deg] Pointing Roll	0.0	32.43774307410015	[s] Primary exposure time	3.2	3.2
[mm] SIM focus pos	-1.429586	-1.428180813131781			
[mm] SIM defocus	0.1037507710433287	0.1051558262725154			
[mm] SIM translation stage pos	250.455976	250.4635187648994			
[mm] SIM translation stage offset	0	-0.007540371344731511			
[s] Observation start time (MET)	401221747.896359	401221746.87136			
Observation start date	2010-09-18T18:29:08	2010-09-18T18:29:06			
[s] Observation end time (MET)	401230601.846813	401230600.82182			
Observation end date	2010-09-18T20:56:42	2010-09-18T20:56:40			
Read mode	TIMED	TIMED			

2.3 Star Slots

2.4 FID Slots

A Summary

A.1 Status

V&V Scientist	Beth Sundheim
V&V Date (YYYY-MM-DD)	2012.07.12
V&V Edition	1
V&V Disposition and Status	OK
V&V Charge Time	6.4439060396552

A.2 Comments