

# V&V Reference Report

## L2 ASCDS Version : 8.4.5

Observation 56014 - L2 Version 2  
Chandra X-Ray Center

L2 Processing Date : Jul 3 2012

## Contents

<b>1</b>	<b>Front</b>	<b>2</b>
<b>2</b>	<b>OBI</b>	<b>3</b>
2.1	OBI . . . . .	3
2.1.1	Images . . . . .	3
2.1.2	Bias . . . . .	3
2.1.3	Parameters . . . . .	4
2.1.4	Events . . . . .	4
2.2	Compared Parameters . . . . .	5
2.3	Star Slots . . . . .	6
2.4	FID Slots . . . . .	6
<b>A</b>	<b>Summary</b>	<b>7</b>
A.1	Status . . . . .	7
A.2	Comments . . . . .	7

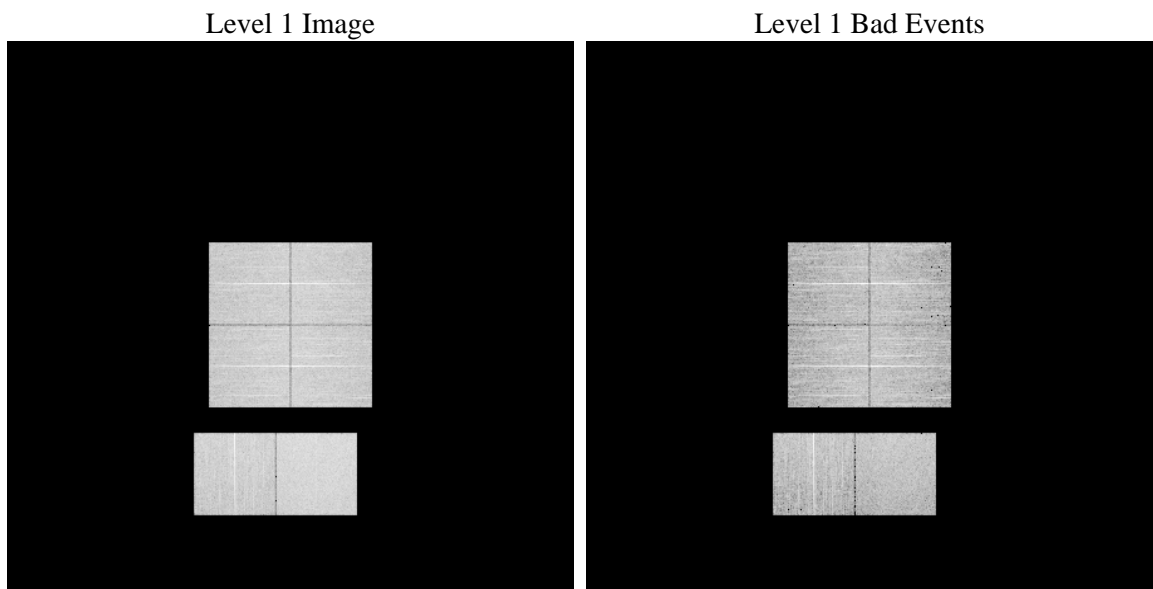
# 1 Front

seq_num	&#160	Sequence number
obs_id	56014	Observation id
title	ACIS-012367 diagnostics	Proposal title
observer	CHANDRA engineering request/realtime commanding	Principal investig
object	&#160	Source name
dtcycle	0	&#160
cycle	P	events from which exps? Prim/Second/Both
ra_targ	0.0	Observer's specified target RA [deg]
dec_targ	0.0	Observer's specified target Dec [deg]
ra_nom	14.98369679299	Nominal RA [deg]
dec_nom	20.004586783215	Nominal Dec [deg]
roll_nom	142.37983509228	Nominal Roll [deg]
revision	2	Processing version of data
ontime	8281.5999692082	Sum of GTIs [s]
livetime	8176.7333638173	Livetime [s]
ontime0	8281.5999692082	Sum of GTIs [s]
ontime1	8281.5999692082	Sum of GTIs [s]
ontime2	8281.5999692082	Sum of GTIs [s]
ontime3	8281.5999692082	Sum of GTIs [s]
ontime6	8281.5999692082	Sum of GTIs [s]
ontime7	8281.5999692082	Sum of GTIs [s]
l2events	364916	Number of level 2 events

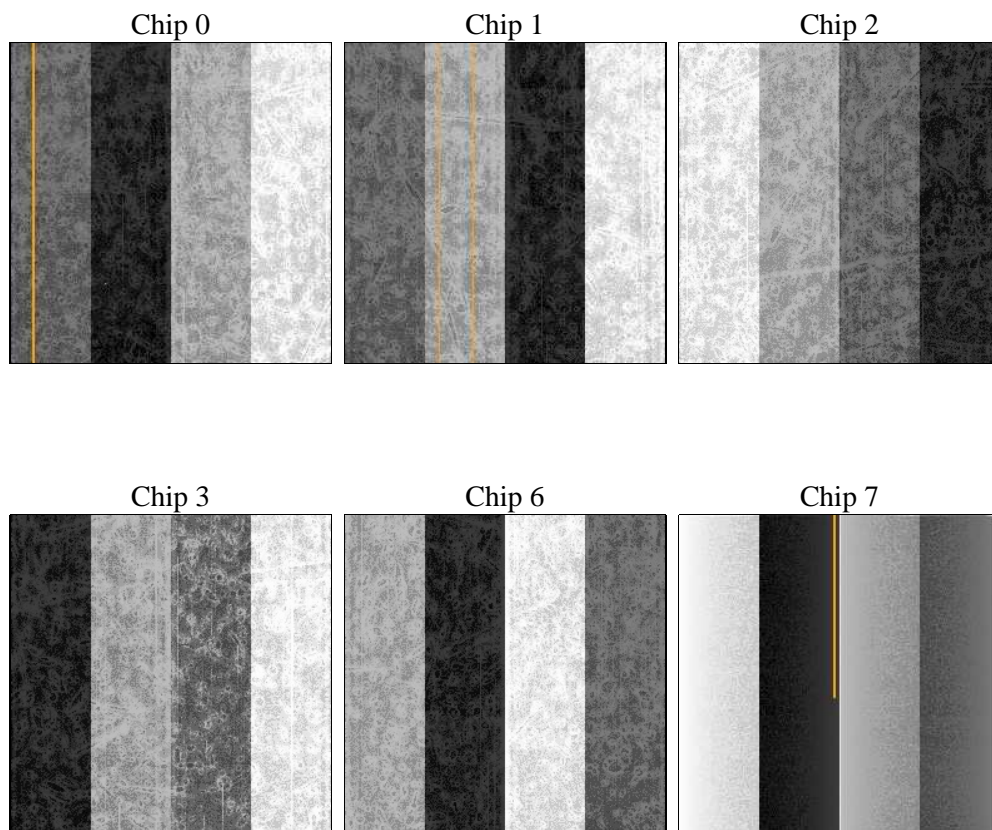
## 2 OBI

### 2.1 OBI

#### 2.1.1 Images



#### 2.1.2 Bias



### 2.1.3 Parameters

obi_num	0	Obi number	sched_exp_time	0.0	[s] Scheduled observation exposure time
ascdsver	8.4.5	Processing system revision	ontime	8281.5999692082	Sum of GTIs [s]
caldsver	4.5.0	&#160	ontime0	8281.5999692082	Sum of GTIs [s]
date	2012-07-04T02:00:40	Date and time of file creation	ontime1	8281.5999692082	Sum of GTIs [s]
revision	2	Processing version of data	ontime2	8281.5999692082	Sum of GTIs [s]
			ontime3	8281.5999692082	Sum of GTIs [s]
			ontime6	8281.5999692082	Sum of GTIs [s]
			ontime7	8281.5999692082	Sum of GTIs [s]
			l1events	761383	Number of level 1 events

### 2.1.4 Events

	ccd 0	ccd 1	ccd 2	ccd 3	ccd 6	ccd 7		ccd 0	ccd 1	ccd 2	ccd 3	ccd 6	ccd 7
level 1 events	116669	119230	120726	123959	124882	155917	grade 0 events	30963	30454	31275	31950	31236	16202
rejected events	58032	60525	62672	65259	64569	64209		26%	25%	25%	25%	25%	10%
rejected %	49%	50%	51%	52%	51%	41%	grade 1 events	189	186	216	250	182	141
								0%	0%	0%	0%	0%	0%
							grade 2 events	10753	11296	10217	10319	10990	19974
								9%	9%	8%	8%	8%	12%
							grade 3 events	4006	3900	3942	4021	4099	8476
								3%	3%	3%	3%	3%	5%
							grade 4 events	3993	3837	4007	3992	3917	8290
								3%	3%	3%	3%	3%	5%
							grade 5 events	3735	3838	3572	4090	3997	10150
								3%	3%	2%	3%	3%	6%
							grade 6 events	8922	9218	8613	8418	10071	38766
								7%	7%	7%	6%	8%	24%
							grade 7 events	54108	56501	58884	60919	60390	53918
								46%	47%	48%	49%	48%	34%

## 2.2 Compared Parameters

Parameter	Planned	Actual	Parameter	Planned	Actual
Instrument	ACIS	ACIS	Obspar format version number	7	7
Detector	ACIS-012367	ACIS-012367	Obspar file type	PREDICTED	ACTUAL
Grating	NONE	NONE	Obspar update status	NONE	UPDATED
Data mode	FAINT	FAINT	Number of optional ACIS chips dropped	0	0
Observation mode	SECONDARY	SECONDARY	On-chip summing requested	N	N
[deg] Pointing RA	0	14.98369679299026	Subarray requested	NONE	NONE
[deg] Pointing Dec	0	20.00458678321494	Alternating exposures requested	N	N
[deg] Pointing Roll	0.0	142.3798350922761	[s] Primary exposure time	3.2	3.2
[mm] SIM focus pos	-1.429586	-1.428180813131781			
[mm] SIM defocus	0.1037507710433287	0.1051558262725154			
[mm] SIM translation stage pos	250.455976	250.466033080201			
[mm] SIM translation stage offset	0	-0.01005468664627074			
[s] Observation start time (MET)	401642440.717944	401642439.69295			
Observation start date	2010-09-23T15:20:41	2010-09-23T15:20:39			
[s] Observation end time (MET)	401654523.418564	401654522.39357			
Observation end date	2010-09-23T18:42:03	2010-09-23T18:42:02			
Read mode	TIMED	TIMED			

## **2.3 Star Slots**

## **2.4 FID Slots**

## **A Summary**

### **A.1 Status**

V&V Scientist	Jen Lauer
V&V Date (YYYY-MM-DD)	2012.07.12
V&V Edition	1
V&V Disposition and Status	OK
V&V Charge Time	8.2815999692082

### **A.2 Comments**