

# V&V Reference Report

## L2 ASCDS Version : 8.4.5

Observation 55832 - L2 Version 2  
Chandra X-Ray Center

L2 Processing Date : Jul 7 2012

## Contents

<b>1</b>	<b>Front</b>	<b>2</b>
<b>2</b>	<b>OBI</b>	<b>3</b>
2.1	OBI . . . . .	3
2.1.1	Images . . . . .	3
2.1.2	Bias . . . . .	3
2.1.3	Parameters . . . . .	4
2.1.4	Events . . . . .	4
2.2	Compared Parameters . . . . .	5
2.3	Star Slots . . . . .	6
2.4	FID Slots . . . . .	6
<b>A</b>	<b>Summary</b>	<b>7</b>
A.1	Status . . . . .	7
A.2	Comments . . . . .	7

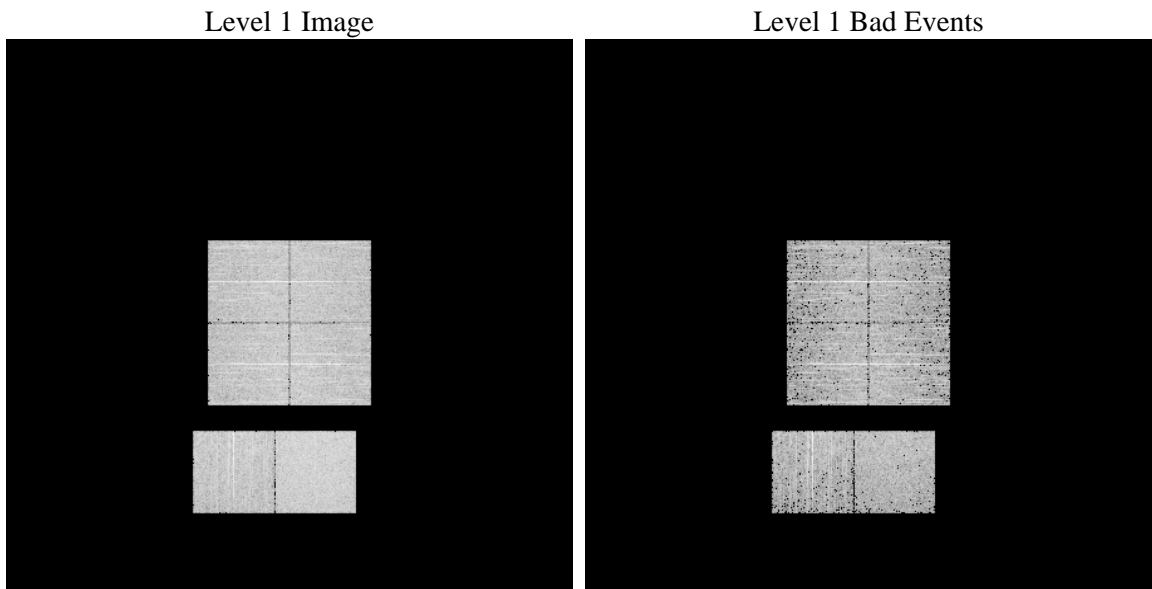
# 1 Front

seq_num	&#160	Sequence number
obs_id	55832	Observation id
title	ACIS-012367 diagnostics	Proposal title
observer	CHANDRA engineering request/realtime commanding	Principal investig
object	&#160	Source name
dtcycle	0	&#160
cycle	P	events from which exps? Prim/Second/Both
ra_targ	0.0	Observer's specified target RA [deg]
dec_targ	0.0	Observer's specified target Dec [deg]
ra_nom	74.019099721959	Nominal RA [deg]
dec_nom	-1.4785101308854	Nominal Dec [deg]
roll_nom	15.431721870243	Nominal Roll [deg]
revision	2	Processing version of data
ontime	3283.1164059639	Sum of GTIs [s]
livetime	3241.5436091762	Livetime [s]
ontime0	3283.1574460268	Sum of GTIs [s]
ontime1	3283.1804894209	Sum of GTIs [s]
ontime2	3283.1409512162	Sum of GTIs [s]
ontime3	3283.0753660202	Sum of GTIs [s]
ontime6	3283.0999112129	Sum of GTIs [s]
ontime7	3283.1164059639	Sum of GTIs [s]
l2events	139571	Number of level 2 events

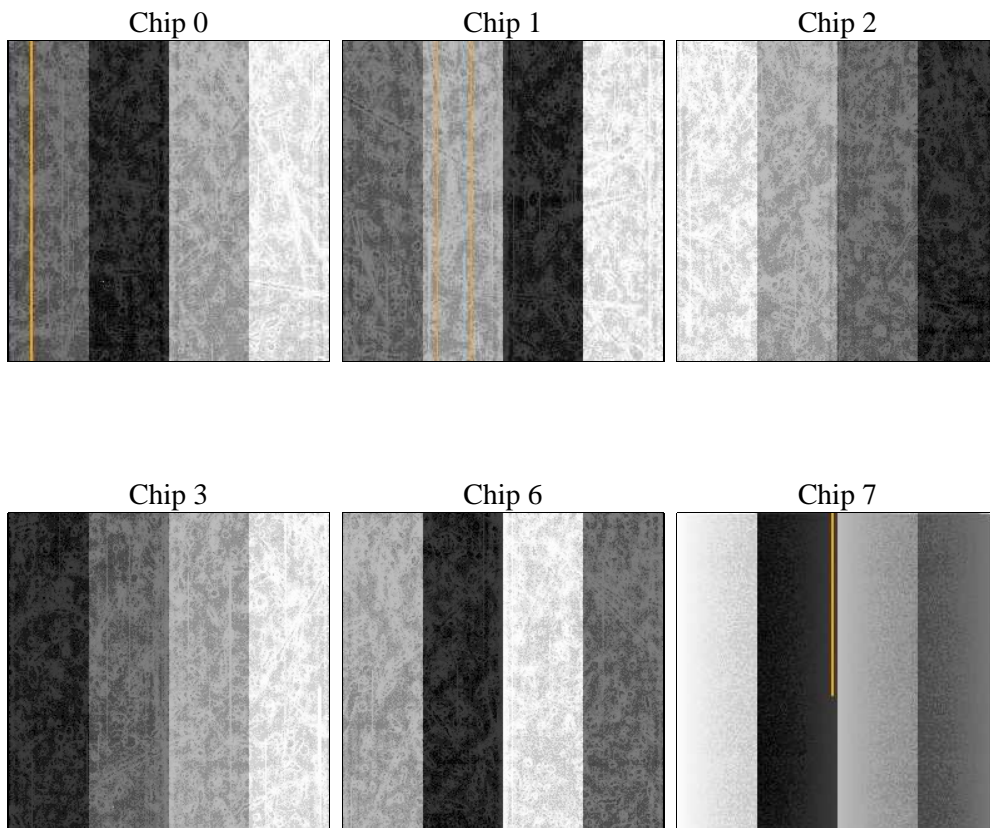
## 2 OBI

### 2.1 OBI

#### 2.1.1 Images



#### 2.1.2 Bias



### 2.1.3 Parameters

obi_num	0	Obi number	sched_exp_time	0.0	[s] Scheduled observation exposure time
ascdsver	8.4.5	Processing system revision	ontime	3283.1164059639	Sum of GTIs [s]
caldsver	4.5.0	&#160	ontime0	3283.1574460268	Sum of GTIs [s]
date	2012-07-07T18:18:49	Date and time of file creation	ontime1	3283.1804894209	Sum of GTIs [s]
revision	2	Processing version of data	ontime2	3283.1409512162	Sum of GTIs [s]
			ontime3	3283.0753660202	Sum of GTIs [s]
			ontime6	3283.0999112129	Sum of GTIs [s]
			ontime7	3283.1164059639	Sum of GTIs [s]
			l1events	300247	Number of level 1 events

### 2.1.4 Events

	ccd 0	ccd 1	ccd 2	ccd 3	ccd 6	ccd 7
level 1 events	47387	45299	47773	49199	49070	61519
rejected events	25097	22734	25434	26981	26148	26121
rejected %	52%	50%	53%	54%	53%	42%

	ccd 0	ccd 1	ccd 2	ccd 3	ccd 6	ccd 7
grade 0 events	11782	11504	12004	12078	11798	6008
	24%	25%	25%	24%	24%	9%
grade 1 events	72	60	86	91	72	46
	0%	0%	0%	0%	0%	0%
grade 2 events	4013	4507	3837	3865	4197	7731
	8%	9%	8%	7%	8%	12%
grade 3 events	1529	1479	1521	1520	1500	3021
	3%	3%	3%	3%	3%	4%
grade 4 events	1514	1490	1587	1497	1459	3091
	3%	3%	3%	3%	2%	5%
grade 5 events	1532	1461	1417	1635	1612	3988
	3%	3%	2%	3%	3%	6%
grade 6 events	3452	3585	3390	3258	3968	15547
	7%	7%	7%	6%	8%	25%
grade 7 events	23493	21213	23931	25255	24464	22087
	49%	46%	50%	51%	49%	35%

## 2.2 Compared Parameters

Parameter	Planned	Actual	Parameter	Planned	Actual
Instrument	ACIS	ACIS	Obspar format version number	7	7
Detector	ACIS-012367	ACIS-012367	Obspar file type	PREDICTED	ACTUAL
Grating	NONE	NONE	Obspar update status	NONE	UPDATED
Data mode	FAINT	FAINT	Number of optional ACIS chips dropped	0	0
Observation mode	SECONDARY	SECONDARY	On-chip summing requested	N	N
[deg] Pointing RA	0	74.0190997219589	Subarray requested	NONE	NONE
[deg] Pointing Dec	0	-1.478510130885426	Alternating exposures requested	N	N
[deg] Pointing Roll	0.0	15.43172187024335	[s] Primary exposure time	3.2	3.2
[mm] SIM focus pos	-1.429586	-1.428180813131781			
[mm] SIM defocus	0.1037507710433287	0.1051558262725154			
[mm] SIM translation stage pos	250.455976	250.466033080201			
[mm] SIM translation stage offset	0	-0.01005468664627074			
[s] Observation start time (MET)	407586875.223855	407586874.19885			
Observation start date	2010-12-01T10:34:35	2010-12-01T10:34:34			
[s] Observation end time (MET)	407603478.174712	407603477.1497			
Observation end date	2010-12-01T15:11:18	2010-12-01T15:11:17			
Read mode	TIMED	TIMED			

## **2.3 Star Slots**

## **2.4 FID Slots**

## A Summary

### A.1 Status

V&V Scientist	Jen Lauer
V&V Date (YYYY-MM-DD)	2012.07.17
V&V Edition	1
V&V Disposition and Status	OK
V&V Charge Time	3.2831164059639

### A.2 Comments