

V&V Reference Report

L2 ASCDS Version : 8.4.5

Observation 55815 - L2 Version 2
Chandra X-Ray Center

L2 Processing Date : Jul 8 2012

Contents

1	Front	2
2	OBI	3
2.1	OBI	3
2.1.1	Images	3
2.1.2	Bias	3
2.1.3	Parameters	4
2.1.4	Events	4
2.2	Compared Parameters	5
2.3	Star Slots	6
2.4	FID Slots	6
A	Summary	7
A.1	Status	7
A.2	Comments	7

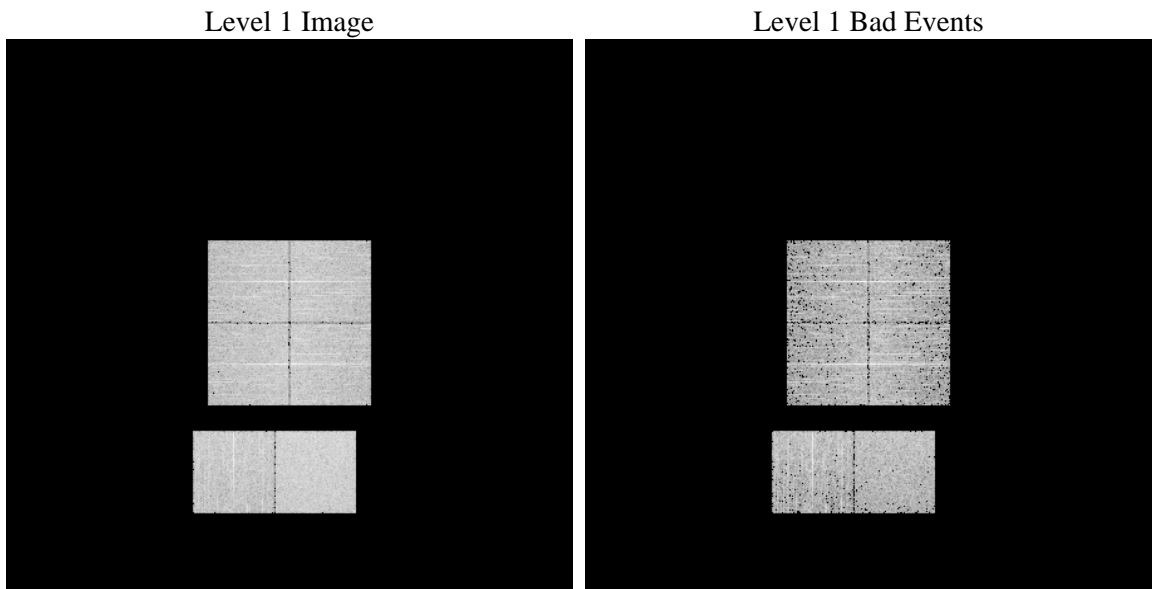
1 Front

seq_num	 	Sequence number
obs_id	55815	Observation id
title	ACIS-012367 diagnostics	Proposal title
observer	CHANDRA engineering request/realtime commanding	Principal investig
object	 	Source name
dtcycle	0	
cycle	P	events from which exps? Prim/Second/Both
ra_targ	0.0	Observer's specified target RA [deg]
dec_targ	0.0	Observer's specified target Dec [deg]
ra_nom	98.001199075974	Nominal RA [deg]
dec_nom	8.1959525633956	Nominal Dec [deg]
roll_nom	52.680753662179	Nominal Roll [deg]
revision	2	Processing version of data
ontime	3237.2241505384	Sum of GTIs [s]
livetime	3196.232469122	Livetime [s]
ontime0	3237.1831105351	Sum of GTIs [s]
ontime1	3237.1420705318	Sum of GTIs [s]
ontime2	3237.1010305285	Sum of GTIs [s]
ontime3	3237.2651905417	Sum of GTIs [s]
ontime6	3237.0599905252	Sum of GTIs [s]
ontime7	3237.2241505384	Sum of GTIs [s]
l2events	140897	Number of level 2 events

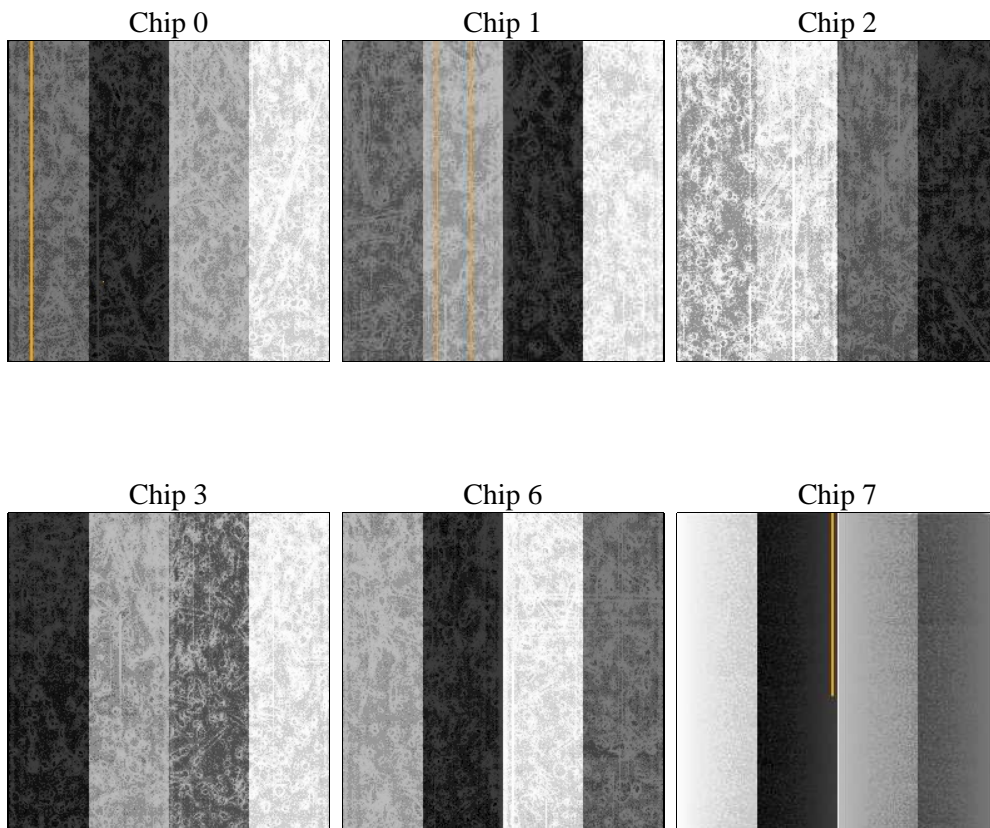
2 OBI

2.1 OBI

2.1.1 Images



2.1.2 Bias



2.1.3 Parameters

obi_num	0	Obi number	sched_exp_time	0.0	[s] Scheduled observation exposure time
ascdsver	8.4.5	Processing system revision	ontime	3237.2241505384	Sum of GTIs [s]
caldsver	4.5.0	 	ontime0	3237.1831105351	Sum of GTIs [s]
date	2012-07-08T04:35:44	Date and time of file creation	ontime1	3237.1420705318	Sum of GTIs [s]
revision	2	Processing version of data	ontime2	3237.1010305285	Sum of GTIs [s]
			ontime3	3237.2651905417	Sum of GTIs [s]
			ontime6	3237.0599905252	Sum of GTIs [s]
			ontime7	3237.2241505384	Sum of GTIs [s]
			l1events	296876	Number of level 1 events

2.1.4 Events

	ccd 0	ccd 1	ccd 2	ccd 3	ccd 6	ccd 7		ccd 0	ccd 1	ccd 2	ccd 3	ccd 6	ccd 7
level 1 events	44714	47099	45999	47646	50065	61353	grade 0 events	11949	11846	12293	12403	12095	6305
rejected events	22321	24332	23575	24786	26611	26024		26%	25%	26%	26%	24%	10%
rejected %	49%	51%	51%	52%	53%	42%	grade 1 events	86	65	83	88	100	49
								0%	0%	0%	0%	0%	0%
							grade 2 events	4228	4398	4005	4160	4429	7641
								9%	9%	8%	8%	8%	12%
							grade 3 events	1541	1553	1558	1604	1550	3180
								3%	3%	3%	3%	3%	5%
							grade 4 events	1533	1558	1499	1520	1605	3231
								3%	3%	3%	3%	3%	5%
							grade 5 events	1545	1532	1413	1621	1644	4122
								3%	3%	3%	3%	3%	6%
							grade 6 events	3462	3751	3426	3506	4123	15539
								7%	7%	7%	7%	8%	25%
							grade 7 events	20370	22396	21722	22744	24519	21286
								45%	47%	47%	47%	48%	34%

2.2 Compared Parameters

Parameter	Planned	Actual
Instrument	ACIS	ACIS
Detector	ACIS-012367	ACIS-012367
Grating	NONE	NONE
Data mode	FAINT	FAINT
Observation mode	SECONDARY	SECONDARY
[deg] Pointing RA	0	98.00119907597387
[deg] Pointing Dec	0	8.195952563395631
[deg] Pointing Roll	0.0	52.68075366217853
[mm] SIM focus pos	-1.4281808131	-1.4281808131
[mm] SIM defocus	0.1051557500557434	0.1051557500557434
[mm] SIM translation stage pos	250.4660330802	250.4660330802
[mm] SIM translation stage offset	-0.01005726120527584	-0.01005726120527584
[s] Observation start time (MET)	408272374.759178	408272374.759178
Observation start date	2010-12-09T08:59:35	2010-12-09T08:59:34
[s] Observation end time (MET)	408276921.491112	408276921.491112
Observation end date	2010-12-09T10:15:21	2010-12-09T10:15:21
Read mode	TIMED	TIMED

Parameter	Planned	Actual
Obspar format version number	7	7
Obspar file type	PREDICTED	ACTUAL
Obspar update status	OVERRIDE	OVERRIDE
Number of optional ACIS chips dropped	0	0
On-chip summing requested	N	N
Subarray requested	NONE	NONE
Alternating exposures requested	N	N
[s] Primary exposure time	3.2	3.2

2.3 Star Slots

2.4 FID Slots

A Summary

A.1 Status

V&V Scientist	Jen Lauer
V&V Date (YYYY-MM-DD)	2012.07.17
V&V Edition	1
V&V Disposition and Status	OK
V&V Charge Time	3.2372241505384

A.2 Comments