

V&V Reference Report

L2 ASCDS Version : 8.4.4

Observation 57193 - L2 Version 2
Chandra X-Ray Center

L2 Processing Date : Jun 3 2012

Contents

1	Front	2
2	OBI	3
2.1	OBI	3
2.1.1	Images	3
2.1.2	Bias	3
2.1.3	Parameters	4
2.1.4	Events	4
2.2	Compared Parameters	5
2.3	Star Slots	6
2.4	FID Slots	6
A	Summary	7
A.1	Status	7
A.2	Comments	7

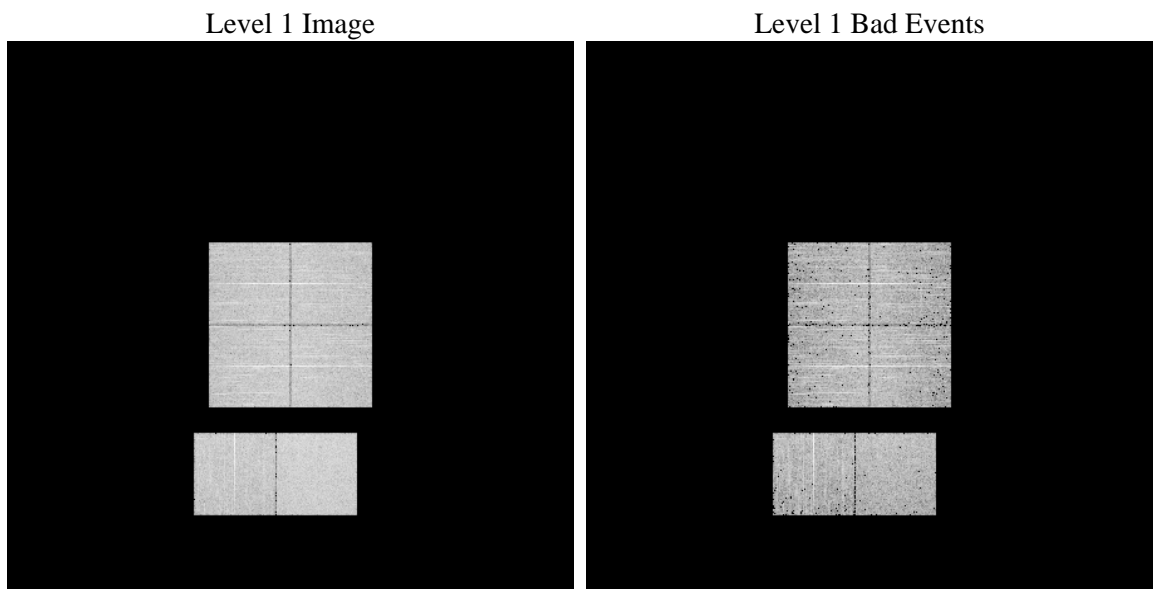
1 Front

seq_num	 	Sequence number
obs_id	57193	Observation id
title	ACIS-012367 diagnostics	Proposal title
observer	CHANDRA engineering request/realtime commanding	Principal investig
object	 	Source name
dtcycle	0	
cycle	P	events from which exps? Prim/Second/Both
ra_targ	0.0	Observer's specified target RA [deg]
dec_targ	0.0	Observer's specified target Dec [deg]
ra_nom	215.47249725349	Nominal RA [deg]
dec_nom	8.5095176103915	Nominal Dec [deg]
roll_nom	128.27455125545	Nominal Roll [deg]
revision	2	Processing version of data
ontime	3129.5999884009	Sum of GTIs [s]
livetime	3089.9711089289	Livetime [s]
ontime0	3129.5999884009	Sum of GTIs [s]
ontime1	3129.5999884009	Sum of GTIs [s]
ontime2	3129.5999884009	Sum of GTIs [s]
ontime3	3129.5999884009	Sum of GTIs [s]
ontime6	3129.5999884009	Sum of GTIs [s]
ontime7	3129.5999884009	Sum of GTIs [s]
l2events	189650	Number of level 2 events

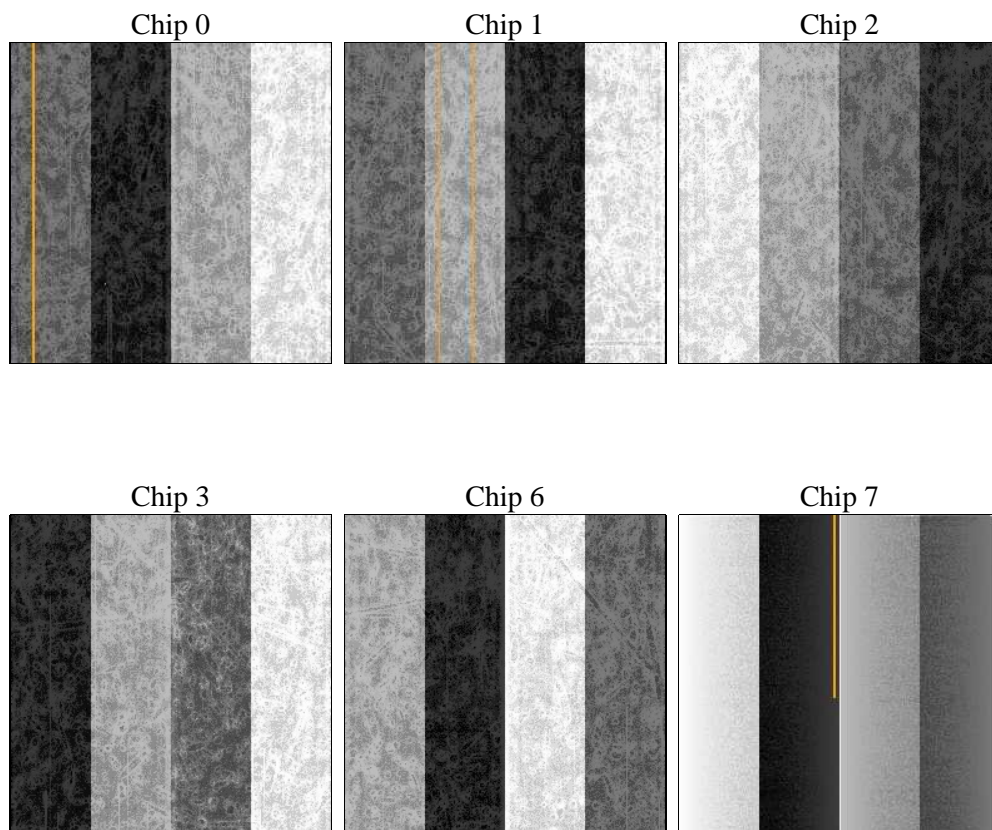
2 OBI

2.1 OBI

2.1.1 Images



2.1.2 Bias



2.1.3 Parameters

obi_num	0	Obi number	sched_exp_time	0.0	[s] Scheduled observation exposure time
ascdsver	8.4.4	Processing system revision	ontime	3129.5999884009	Sum of GTIs [s]
caldbver	4.4.9	 	ontime0	3129.5999884009	Sum of GTIs [s]
date	2012-06-04T01:23:36	Date and time of file creation	ontime1	3129.5999884009	Sum of GTIs [s]
revision	2	Processing version of data	ontime2	3129.5999884009	Sum of GTIs [s]
			ontime3	3129.5999884009	Sum of GTIs [s]
			ontime6	3129.5999884009	Sum of GTIs [s]
			ontime7	3129.5999884009	Sum of GTIs [s]
			l1events	387852	Number of level 1 events

2.1.4 Events

	ccd 0	ccd 1	ccd 2	ccd 3	ccd 6	ccd 7		ccd 0	ccd 1	ccd 2	ccd 3	ccd 6	ccd 7
level 1 events	61019	60100	64573	62764	63064	76332	grade 0 events	17175	16791	17388	17454	17413	8986
rejected events	30145	29566	33737	32264	31341	30294		28%	27%	26%	27%	27%	11%
rejected %	49%	49%	52%	51%	49%	39%	grade 1 events	148	123	136	137	108	61
								0%	0%	0%	0%	0%	0%
							grade 2 events	5946	5977	5585	5400	5969	10476
								9%	9%	8%	8%	9%	13%
							grade 3 events	2145	2114	2216	2210	2168	4643
								3%	3%	3%	3%	3%	6%
							grade 4 events	2177	2077	2201	2154	2195	4462
								3%	3%	3%	3%	3%	5%
							grade 5 events	1625	1729	1643	1796	1765	4598
								2%	2%	2%	2%	2%	6%
							grade 6 events	4816	5002	4801	4718	5358	19587
								7%	8%	7%	7%	8%	25%
							grade 7 events	26987	26287	30603	28895	28088	23519
								44%	43%	47%	46%	44%	30%

2.2 Compared Parameters

Parameter	Planned	Actual	Parameter	Planned	Actual
Instrument	ACIS	ACIS	Obspar format version number	7	7
Detector	ACIS-012367	ACIS-012367	Obspar file type	PREDICTED	ACTUAL
Grating	NONE	NONE	Obspar update status	OVERRIDE	OVERRIDE
Data mode	FAINT	FAINT	Number of optional ACIS chips dropped	0	0
Observation mode	SECONDARY	SECONDARY	On-chip summing requested	N	N
[deg] Pointing RA	0	215.4724972534855	Subarray requested	NONE	NONE
[deg] Pointing Dec	0	8.509517610391541	Alternating exposures requested	N	N
[deg] Pointing Roll	0.0	128.2745512554548	[s] Primary exposure time	3.2	3.2
[mm] SIM focus pos	-0.68282252473119	-0.68282252473119			
[mm] SIM defocus	0.8505140384245534	0.8505140384245534			
[mm] SIM translation stage pos	250.4660330802	250.4660330802			
[mm] SIM translation stage offset	-0.01005726120527584	-0.01005726120527584			
[s] Observation start time (MET)	355488398.086014	355488398.086014			
Observation start date	2009-04-07T10:46:38	2009-04-07T10:46:38			
[s] Observation end time (MET)	355492945.04094	355492945.04094			
Observation end date	2009-04-07T12:02:25	2009-04-07T12:02:25			
Read mode	TIMED	TIMED			

2.3 Star Slots

2.4 FID Slots

A Summary

A.1 Status

V&V Scientist	Jen Lauer
V&V Date (YYYY-MM-DD)	2012.06.07
V&V Edition	1
V&V Disposition and Status	OK
V&V Charge Time	3.1295999884009

A.2 Comments