

V&V Reference Report

L2 ASCDS Version : 8.4.5

Observation 56658 - L2 Version 2
Chandra X-Ray Center

L2 Processing Date : Jun 17 2012

Contents

1	Front	2
2	OBI	3
2.1	OBI	3
2.1.1	Images	3
2.1.2	Bias	3
2.1.3	Parameters	4
2.1.4	Events	4
2.2	Compared Parameters	5
2.3	Star Slots	6
2.4	FID Slots	6
A	Summary	7
A.1	Status	7
A.2	Comments	7

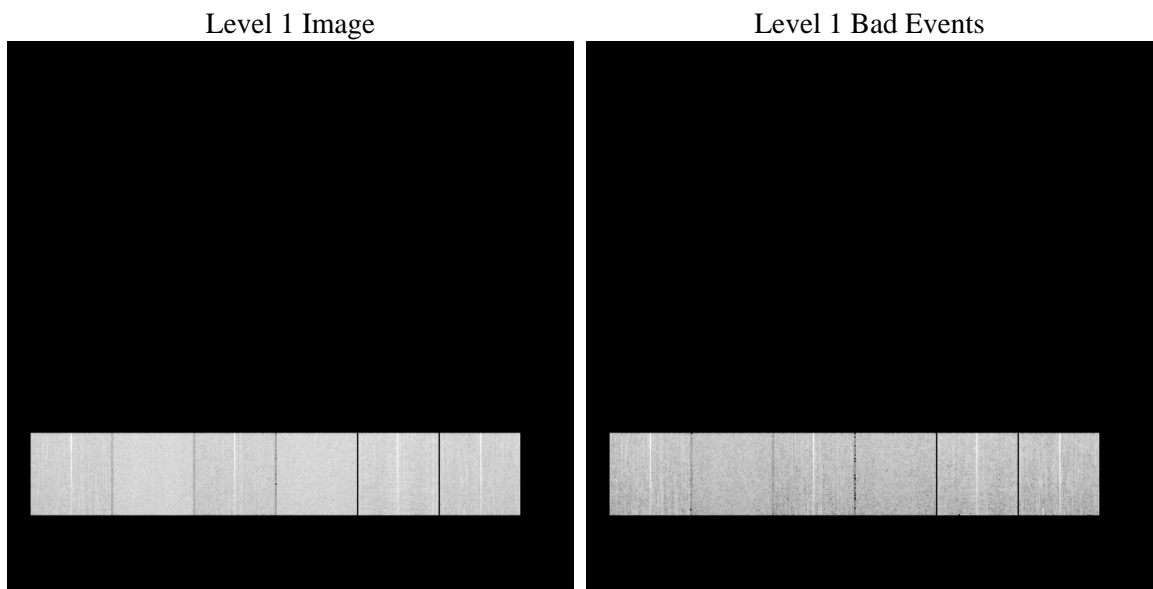
1 Front

seq_num	 	Sequence number
obs_id	56658	Observation id
title	ACIS-456789 diagnostics	Proposal title
observer	CHANDRA engineering request/realtime commanding	Principal investig
object	 	Source name
dtcycle	0	
cycle	P	events from which exps? Prim/Second/Both
ra_targ	0.0	Observer's specified target RA [deg]
dec_targ	0.0	Observer's specified target Dec [deg]
ra_nom	69.962825751304	Nominal RA [deg]
dec_nom	41.492807761027	Nominal Dec [deg]
roll_nom	148.64586578203	Nominal Roll [deg]
revision	2	Processing version of data
ontime	8297.5999691486	Sum of GTIs [s]
livetime	8192.5307621244	Livetime [s]
ontime4	8297.5999691486	Sum of GTIs [s]
ontime5	8297.5999691486	Sum of GTIs [s]
ontime6	8294.3589488864	Sum of GTIs [s]
ontime7	8297.5999691486	Sum of GTIs [s]
ontime8	8297.5999691486	Sum of GTIs [s]
ontime9	8297.5999691486	Sum of GTIs [s]
l2events	480378	Number of level 2 events

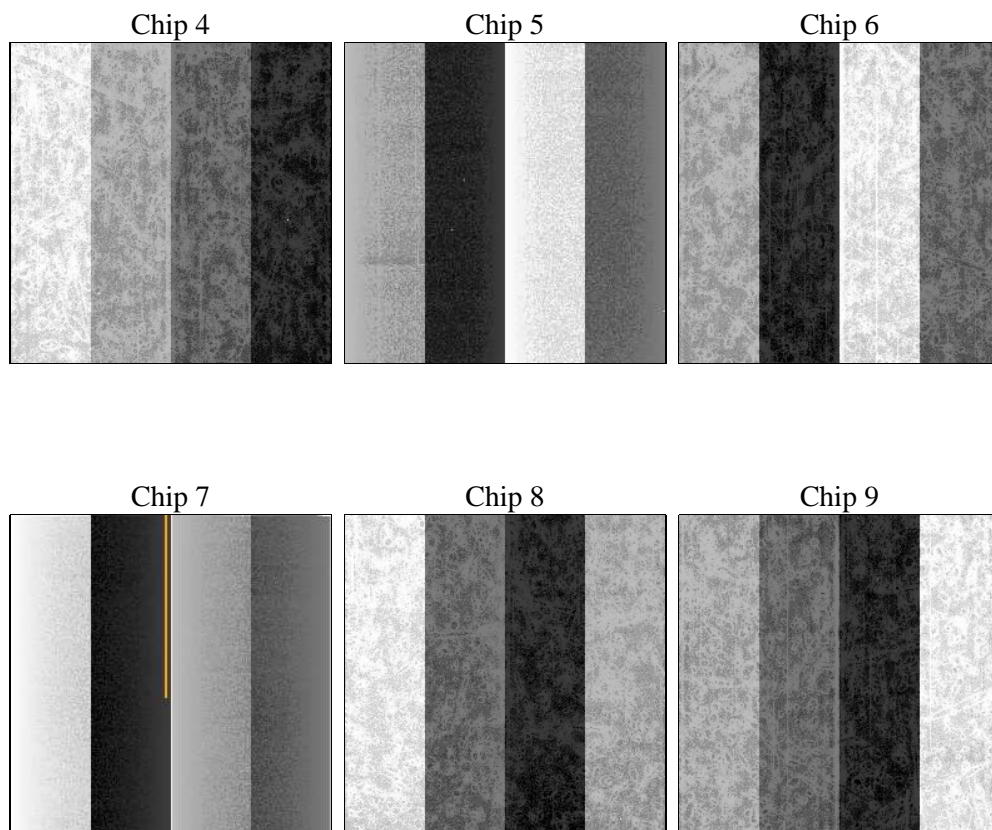
2 OBI

2.1 OBI

2.1.1 Images



2.1.2 Bias



2.1.3 Parameters

obi_num	2	Obi number	sched_exp_time	0.0	[s] Scheduled observation exposure time
ascdsver	8.4.5	Processing system revision	ontime	8297.5999691486	Sum of GTIs [s]
caldsver	4.4.10	 	ontime4	8297.5999691486	Sum of GTIs [s]
date	2012-06-17T05:03:25	Date and time of file creation	ontime5	8297.5999691486	Sum of GTIs [s]
revision	2	Processing version of data	ontime6	8294.3589488864	Sum of GTIs [s]
			ontime7	8297.5999691486	Sum of GTIs [s]
			ontime8	8297.5999691486	Sum of GTIs [s]
			ontime9	8297.5999691486	Sum of GTIs [s]
			l1events	1008345	Number of level 1 events

2.1.4 Events

	ccd 4	ccd 5	ccd 6	ccd 7	ccd 8	ccd 9		ccd 4	ccd 5	ccd 6	ccd 7	ccd 8	ccd 9
level 1 events	156617	186791	151823	182137	176656	154321	grade 0 events	38798	13912	38132	19394	42611	37528
rejected events	87181	76670	78639	72220	88647	83304		24%	7%	25%	10%	24%	24%
rejected %	55%	41%	51%	39%	50%	53%	grade 1 events	382	232	248	166	334	308
								0%	0%	0%	0%	0%	0%
							grade 2 events	11280	39750	13160	23890	17132	12519
								7%	21%	8%	13%	9%	8%
							grade 3 events	5050	4850	4808	10181	6130	4814
								3%	2%	3%	5%	3%	3%
							grade 4 events	4953	4733	4813	9916	6235	4839
								3%	2%	3%	5%	3%	3%
							grade 5 events	4457	9890	4454	11552	5950	5013
								2%	5%	2%	6%	3%	3%
							grade 6 events	9355	46876	12271	46536	15901	11317
								5%	25%	8%	25%	9%	7%
							grade 7 events	82342	66548	73937	60502	82363	77983
								52%	35%	48%	33%	46%	50%

2.2 Compared Parameters

Parameter	Planned	Actual	Parameter	Planned	Actual
Instrument	ACIS	ACIS	Obspar format version number	7	7
Detector	ACIS-456789	ACIS-456789	Obspar file type	PREDICTED	ACTUAL
Grating	NONE	NONE	Obspar update status	NONE	UPDATED
Data mode	FAINT	FAINT	Number of optional ACIS chips dropped	0	0
Observation mode	SECONDARY	SECONDARY	On-chip summing requested	N	N
[deg] Pointing RA	0	69.96282575130436	Subarray requested	NONE	NONE
[deg] Pointing Dec	0	41.49280776102665	Alternating exposures requested	N	N
[deg] Pointing Roll	0.0	148.6458657820294	[s] Primary exposure time	3.2	3.2
[mm] SIM focus pos	-1.429586	-0.7809083437167272			
[mm] SIM defocus	0.1037507710433287	0.7524282956875696			
[mm] SIM translation stage pos	250.455976	250.466033080201			
[mm] SIM translation stage offset	0	-0.01005468664627074			
[s] Observation start time (MET)	375176884.021783	375176882.99677			
Observation start date	2009-11-21T07:48:04	2009-11-21T07:48:02			
[s] Observation end time (MET)	375185836.372235	375185835.34723			
Observation end date	2009-11-21T10:17:16	2009-11-21T10:17:15			
Read mode	TIMED	TIMED			

2.3 Star Slots

2.4 FID Slots

A Summary

A.1 Status

V&V Scientist	Beth Sundheim
V&V Date (YYYY-MM-DD)	2012.06.20
V&V Edition	1
V&V Disposition and Status	OK
V&V Charge Time	8.2975999691486

A.2 Comments