

# V&V Reference Report

## L2 ASCDS Version : 8.4.5

Observation 56608 - L2 Version 2  
Chandra X-Ray Center

L2 Processing Date : Jun 17 2012

## Contents

<b>1</b>	<b>Front</b>	<b>2</b>
<b>2</b>	<b>OBI</b>	<b>3</b>
2.1	OBI . . . . .	3
2.1.1	Images . . . . .	3
2.1.2	Bias . . . . .	3
2.1.3	Parameters . . . . .	4
2.1.4	Events . . . . .	4
2.2	Compared Parameters . . . . .	5
2.3	Star Slots . . . . .	6
2.4	FID Slots . . . . .	6
<b>A</b>	<b>Summary</b>	<b>7</b>
A.1	Status . . . . .	7
A.2	Comments . . . . .	7

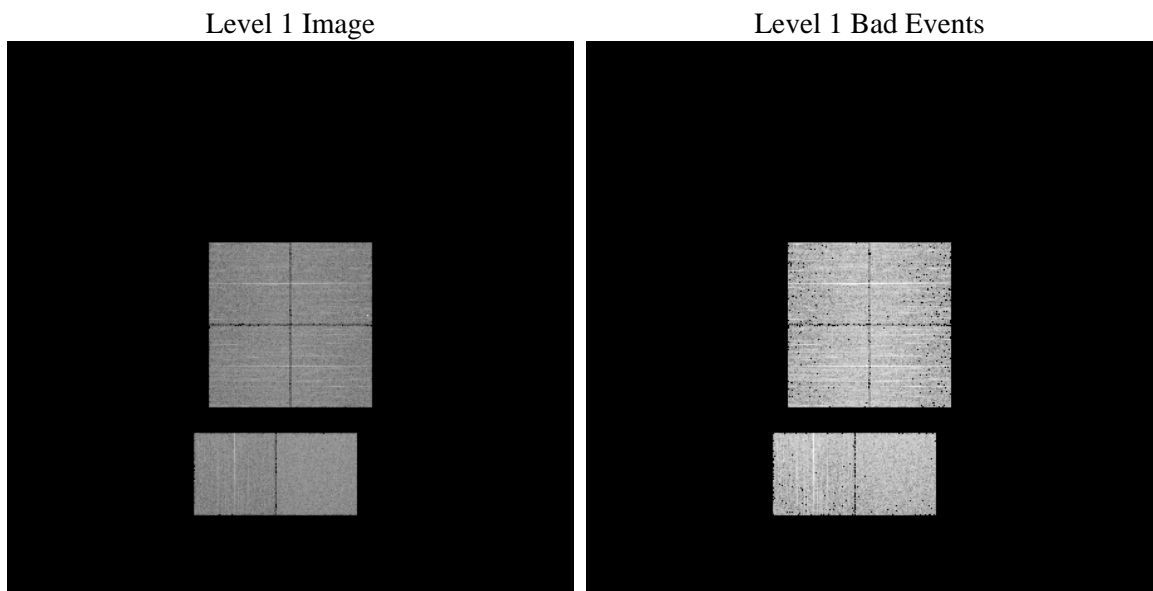
# 1 Front

seq_num	&#160	Sequence number
obs_id	56608	Observation id
title	ACIS-012367 diagnostics	Proposal title
observer	CHANDRA engineering request/realtime commanding	Principal investig
object	&#160	Source name
dtcycle	0	&#160
cycle	P	events from which exps? Prim/Second/Both
ra_targ	0.0	Observer's specified target RA [deg]
dec_targ	0.0	Observer's specified target Dec [deg]
ra_nom	108.81515777002	Nominal RA [deg]
dec_nom	19.402934848154	Nominal Dec [deg]
roll_nom	78.812330268668	Nominal Roll [deg]
revision	2	Processing version of data
ontime	3272.4293415546	Sum of GTIs [s]
livetime	3230.9918708115	Livetime [s]
ontime0	3272.470371604	Sum of GTIs [s]
ontime1	3272.5114116073	Sum of GTIs [s]
ontime2	3272.5524516106	Sum of GTIs [s]
ontime3	3272.3882915974	Sum of GTIs [s]
ontime6	3273.5999878645	Sum of GTIs [s]
ontime7	3272.4293415546	Sum of GTIs [s]
l2events	173408	Number of level 2 events

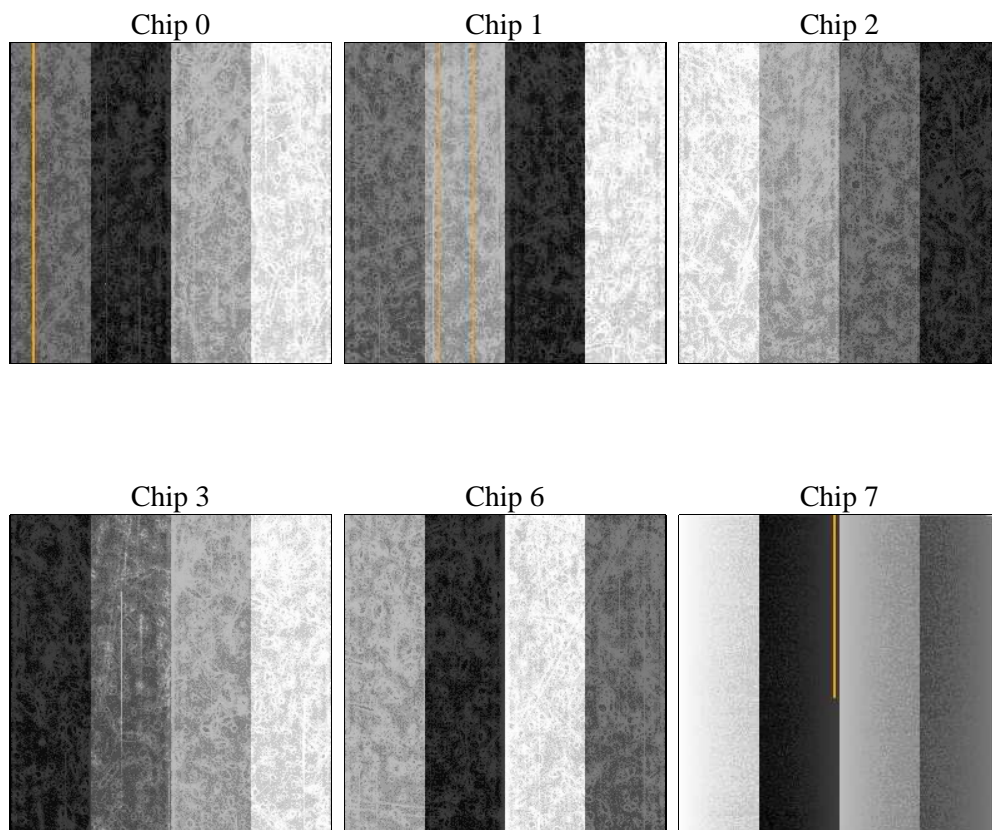
## 2 OBI

### 2.1 OBI

#### 2.1.1 Images



#### 2.1.2 Bias



### 2.1.3 Parameters

obi_num	0	Obi number	sched_exp_time	0.0	[s] Scheduled observation exposure time
ascdsver	8.4.5	Processing system revision	ontime	3272.4293415546	Sum of GTIs [s]
caldsver	4.4.10	&#160	ontime0	3272.470371604	Sum of GTIs [s]
date	2012-06-17T19:23:08	Date and time of file creation	ontime1	3272.5114116073	Sum of GTIs [s]
revision	2	Processing version of data	ontime2	3272.5524516106	Sum of GTIs [s]
			ontime3	3272.3882915974	Sum of GTIs [s]
			ontime6	3273.5999878645	Sum of GTIs [s]
			ontime7	3272.4293415546	Sum of GTIs [s]
			l1events	364779	Number of level 1 events

### 2.1.4 Events

	ccd 0	ccd 1	ccd 2	ccd 3	ccd 6	ccd 7		ccd 0	ccd 1	ccd 2	ccd 3	ccd 6	ccd 7
level 1 events	55548	57464	58907	60657	59343	72860	grade 0 events	14551	14349	14958	15266	14834	7887
rejected events	27994	28809	31320	32583	30753	29188		26%	24%	25%	25%	24%	10%
rejected %	50%	50%	53%	53%	51%	40%	grade 1 events	129	88	117	104	80	71
								0%	0%	0%	0%	0%	0%
							grade 2 events	5072	6224	4844	4884	5208	9586
								9%	10%	8%	8%	8%	13%
							grade 3 events	1914	1812	1931	2030	1898	3971
								3%	3%	3%	3%	3%	5%
							grade 4 events	1819	1860	1828	1895	1821	4040
								3%	3%	3%	3%	3%	5%
							grade 5 events	1641	1702	1554	1868	1878	4799
								2%	2%	2%	3%	3%	6%
							grade 6 events	4198	4410	4026	3999	4845	18188
								7%	7%	6%	6%	8%	24%
							grade 7 events	26224	27019	29649	30611	28779	24318
								47%	47%	50%	50%	48%	33%

## 2.2 Compared Parameters

Parameter	Planned	Actual	Parameter	Planned	Actual
Instrument	ACIS	ACIS	Obspar format version number	7	7
Detector	ACIS-012367	ACIS-012367	Obspar file type	PREDICTED	ACTUAL
Grating	NONE	NONE	Obspar update status	NONE	UPDATED
Data mode	FAINT	FAINT	Number of optional ACIS chips dropped	0	0
Observation mode	SECONDARY	SECONDARY	On-chip summing requested	N	N
[deg] Pointing RA	0	108.8151577700214	Subarray requested	NONE	NONE
[deg] Pointing Dec	0	19.40293484815417	Alternating exposures requested	N	N
[deg] Pointing Roll	0.0	78.81233026866802	[s] Primary exposure time	3.2	3.2
[mm] SIM focus pos	-1.429586	-0.6828225247311905			
[mm] SIM defocus	0.1037507710433287	0.8505141146731063			
[mm] SIM translation stage pos	250.455976	250.466033080201			
[mm] SIM translation stage offset	0	-0.01005468664627074			
[s] Observation start time (MET)	376739529.400581	376739528.37559			
Observation start date	2009-12-09T09:52:09	2009-12-09T09:52:08			
[s] Observation end time (MET)	376744258.75082	376744257.72583			
Observation end date	2009-12-09T11:10:59	2009-12-09T11:10:57			
Read mode	TIMED	TIMED			

## 2.3 Star Slots

## 2.4 FID Slots

## A Summary

### A.1 Status

V&V Scientist	Jen Lauer
V&V Date (YYYY-MM-DD)	2012.06.21
V&V Edition	1
V&V Disposition and Status	OK
V&V Charge Time	3.2724293415546

### A.2 Comments