

V&V Reference Report

L2 ASCDS Version : 8.4.4

Observation 58015 - L2 Version 3
Chandra X-Ray Center

L2 Processing Date : May 8 2012

Contents

| | | |
|----------|-------------------------------|----------|
| 1 | Front | 2 |
| 2 | OBI | 3 |
| 2.1 | OBI | 3 |
| 2.1.1 | Images | 3 |
| 2.1.2 | Bias | 3 |
| 2.1.3 | Parameters | 4 |
| 2.1.4 | Events | 4 |
| 2.2 | Compared Parameters | 5 |
| 2.3 | Star Slots | 6 |
| 2.4 | FID Slots | 6 |
| A | Summary | 7 |
| A.1 | Status | 7 |
| A.2 | Comments | 7 |

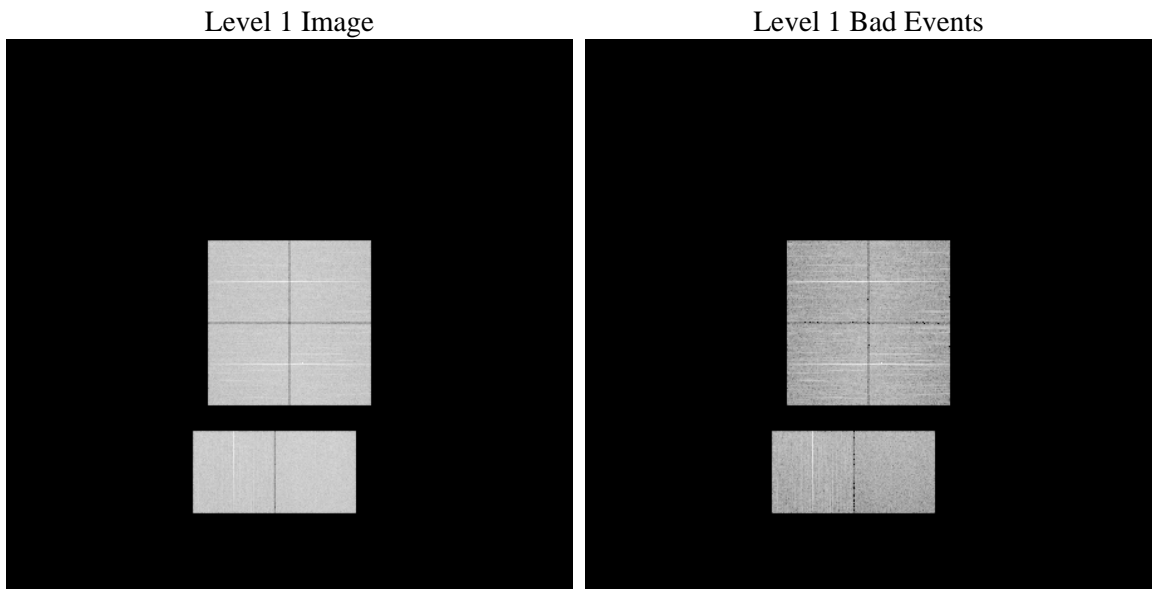
1 Front

| | | |
|----------|---|---|
| seq_num | | Sequence number |
| obs_id | 58015 | Observation id |
| title | ACIS-012367 diagnostics | Proposal title |
| observer | CHANDRA engineering request/realtime commanding | Principal investig |
| object | | Source name |
| dtcycle | 0 | |
| cycle | P | events from which exps? Prim/Second/Both |
| ra_targ | 0.0 | Observer's specified target RA [deg] |
| dec_targ | 0.0 | Observer's specified target Dec [deg] |
| ra_nom | 102.56453116907 | Nominal RA [deg] |
| dec_nom | 45.074725152434 | Nominal Dec [deg] |
| roll_nom | 206.85928584929 | Nominal Roll [deg] |
| revision | 3 | Processing version of data |
| ontime | 7545.5999719501 | Sum of GTIs [s] |
| livetime | 7450.0530416904 | Livetime [s] |
| ontime0 | 7545.5999719501 | Sum of GTIs [s] |
| ontime1 | 7545.5999719501 | Sum of GTIs [s] |
| ontime2 | 7545.5999719501 | Sum of GTIs [s] |
| ontime3 | 7545.5999719501 | Sum of GTIs [s] |
| ontime6 | 7545.5999719501 | Sum of GTIs [s] |
| ontime7 | 7545.5999719501 | Sum of GTIs [s] |
| l2events | 703311 | Number of level 2 events |

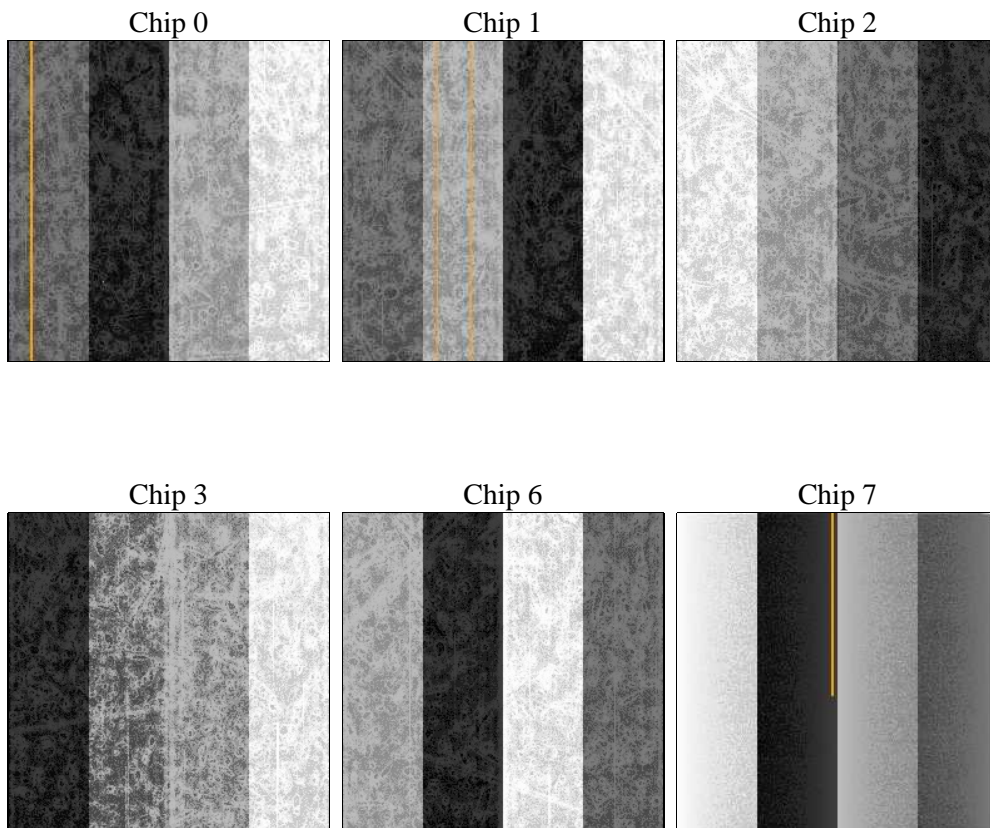
2 OBI

2.1 OBI

2.1.1 Images



2.1.2 Bias



2.1.3 Parameters

| | | | | | |
|----------|---------------------|--------------------------------|----------------|-----------------|---|
| obi_num | 0 | Obi number | sched_exp_time | 6300 | [s] Scheduled observation exposure time |
| ascdsver | 8.4.4 | Processing system revision | ontime | 7545.5999719501 | Sum of GTIs [s] |
| caldsver | 4.4.9 | | ontime0 | 7545.5999719501 | Sum of GTIs [s] |
| date | 2012-05-08T02:53:39 | Date and time of file creation | ontime1 | 7545.5999719501 | Sum of GTIs [s] |
| revision | 3 | Processing version of data | ontime2 | 7545.5999719501 | Sum of GTIs [s] |
| | | | ontime3 | 7545.5999719501 | Sum of GTIs [s] |
| | | | ontime6 | 7545.5999719501 | Sum of GTIs [s] |
| | | | ontime7 | 7545.5999719501 | Sum of GTIs [s] |
| | | | l1events | 1166881 | Number of level 1 events |

2.1.4 Events

| | ccd 0 | ccd 1 | ccd 2 | ccd 3 | ccd 6 | ccd 7 | | ccd 0 | ccd 1 | ccd 2 | ccd 3 | ccd 6 | ccd 7 |
|-----------------|--------|--------|--------|--------|--------|--------|----------------|-------|-------|-------|-------|-------|-------|
| level 1 events | 185623 | 187111 | 189389 | 195322 | 199943 | 209493 | grade 0 events | 64167 | 61652 | 63751 | 66542 | 63778 | 31275 |
| rejected events | 67290 | 68289 | 74079 | 75107 | 77190 | 63208 | | 34% | 32% | 33% | 34% | 31% | 14% |
| rejected % | 36% | 36% | 39% | 38% | 38% | 30% | grade 1 events | 465 | 370 | 447 | 650 | 379 | 153 |
| | | | | | | | | 0% | 0% | 0% | 0% | 0% | 0% |
| | | | | | | | grade 2 events | 21162 | 23506 | 19322 | 20618 | 22581 | 32930 |
| | | | | | | | | 11% | 12% | 10% | 10% | 11% | 15% |
| | | | | | | | grade 3 events | 7809 | 7575 | 7718 | 7931 | 7719 | 13193 |
| | | | | | | | | 4% | 4% | 4% | 4% | 3% | 6% |
| | | | | | | | grade 4 events | 7499 | 7559 | 7685 | 8057 | 7468 | 13105 |
| | | | | | | | | 4% | 4% | 4% | 4% | 3% | 6% |
| | | | | | | | grade 5 events | 3546 | 3700 | 3461 | 4191 | 4059 | 9689 |
| | | | | | | | | 1% | 1% | 1% | 2% | 2% | 4% |
| | | | | | | | grade 6 events | 19517 | 20373 | 18525 | 18884 | 23007 | 57957 |
| | | | | | | | | 10% | 10% | 9% | 9% | 11% | 27% |
| | | | | | | | grade 7 events | 61458 | 62376 | 68480 | 68449 | 70952 | 51191 |
| | | | | | | | | 33% | 33% | 36% | 35% | 35% | 24% |

2.2 Compared Parameters

| Parameter | Planned | Actual | Parameter | Planned | Actual |
|-----------------------------------|-----------------------|-----------------------|---------------------------------------|-----------|----------|
| Instrument | ACIS | ACIS | Obspar format version number | 7 | 7 |
| Detector | ACIS-012367 | ACIS-012367 | Obspar file type | PREDICTED | ACTUAL |
| Grating | NONE | NONE | Obspar update status | OVERRIDE | OVERRIDE |
| Data mode | FAINT | FAINT | Number of optional ACIS chips dropped | 0 | 0 |
| Observation mode | SECONDARY | SECONDARY | On-chip summing requested | N | N |
| [deg] Pointing RA | 102.5642957901065 | 102.5645311690746 | Subarray requested | NONE | NONE |
| [deg] Pointing Dec | 45.07471018793897 | 45.07472515243366 | Alternating exposures requested | N | N |
| [deg] Pointing Roll | 206.8597954704234 | 206.8592858492902 | [s] Primary exposure time | 3.2 | 3.2 |
| [mm] SIM focus pos | -0.68282252473119 | -0.68282252473119 | | | |
| [mm] SIM defocus | 0.8505140384245534 | 0.8505140384245534 | | | |
| [mm] SIM translation stage pos | 250.4635187649 | 250.4635187649 | | | |
| [mm] SIM translation stage offset | -0.007542945905271381 | -0.007542945905271381 | | | |
| [s] Observation start time (MET) | 316641632.869109 | 316641632.869109 | | | |
| Observation start date | 2008-01-13T20:22:00 | 2008-01-13T20:00:32 | | | |
| [s] Observation end time (MET) | 316651000.270523 | 316651000.270523 | | | |
| Observation end date | 2008-01-13T22:07:00 | 2008-01-13T22:36:40 | | | |
| Read mode | TIMED | TIMED | | | |

2.3 Star Slots

2.4 FID Slots

A Summary

A.1 Status

| | |
|----------------------------|-----------------|
| V&V Scientist | Joy Nichols |
| V&V Date (YYYY-MM-DD) | 2012.05.09 |
| V&V Edition | 1 |
| V&V Disposition and Status | OK |
| V&V Charge Time | 7.5455999719501 |

A.2 Comments