

# V&V Reference Report

## L2 ASCDS Version : 8.4.4

Observation 57975 - L2 Version 2  
Chandra X-Ray Center

L2 Processing Date : May 9 2012

## Contents

<b>1</b>	<b>Front</b>	<b>2</b>
<b>2</b>	<b>OBI</b>	<b>3</b>
2.1	OBI . . . . .	3
2.1.1	Images . . . . .	3
2.1.2	Bias . . . . .	3
2.1.3	Parameters . . . . .	4
2.1.4	Events . . . . .	4
2.2	Compared Parameters . . . . .	5
2.3	Star Slots . . . . .	6
2.4	FID Slots . . . . .	6
<b>A</b>	<b>Summary</b>	<b>7</b>
A.1	Status . . . . .	7
A.2	Comments . . . . .	7

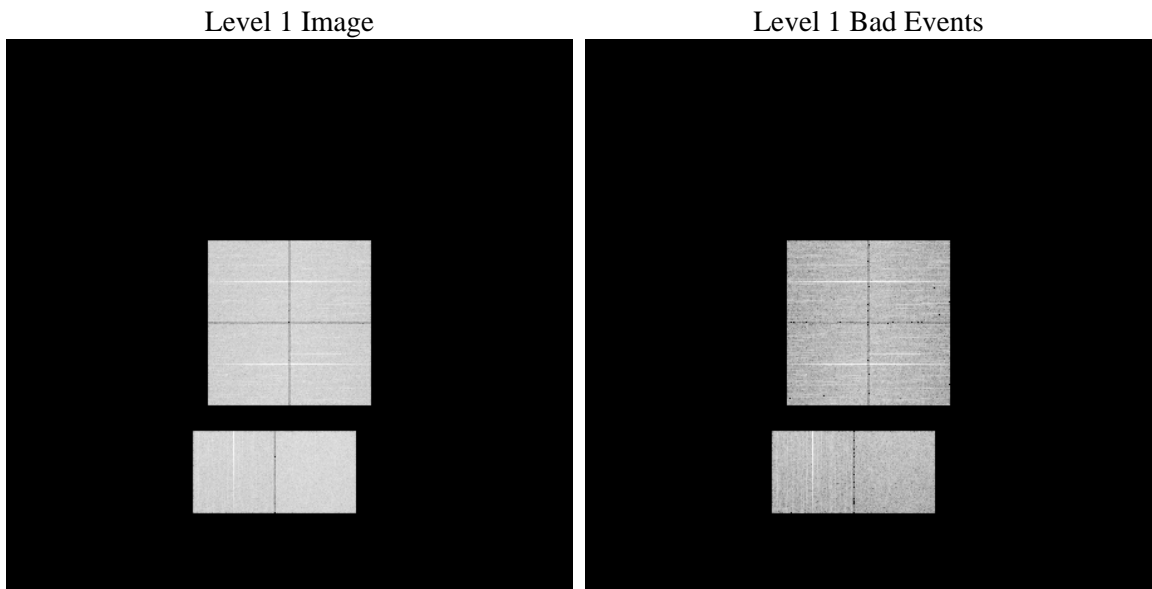
# 1 Front

seq_num	&#160	Sequence number
obs_id	57975	Observation id
title	ACIS-012367 diagnostics	Proposal title
observer	CHANDRA engineering request/realtime commanding	Principal investig
object	&#160	Source name
dtcycle	0	&#160
cycle	P	events from which exps? Prim/Second/Both
ra_targ	0.0	Observer's specified target RA [deg]
dec_targ	0.0	Observer's specified target Dec [deg]
ra_nom	6.5285530730971	Nominal RA [deg]
dec_nom	20.589575896471	Nominal Dec [deg]
roll_nom	305.72333481445	Nominal Roll [deg]
revision	2	Processing version of data
ontime	7017.161985755	Sum of GTIs [s]
livetime	6928.3064554637	Livetime [s]
ontime0	7017.1209457517	Sum of GTIs [s]
ontime1	7017.0799057484	Sum of GTIs [s]
ontime2	7017.0388657451	Sum of GTIs [s]
ontime3	7017.2030257583	Sum of GTIs [s]
ontime6	7016.9978257418	Sum of GTIs [s]
ontime7	7017.161985755	Sum of GTIs [s]
l2events	558674	Number of level 2 events

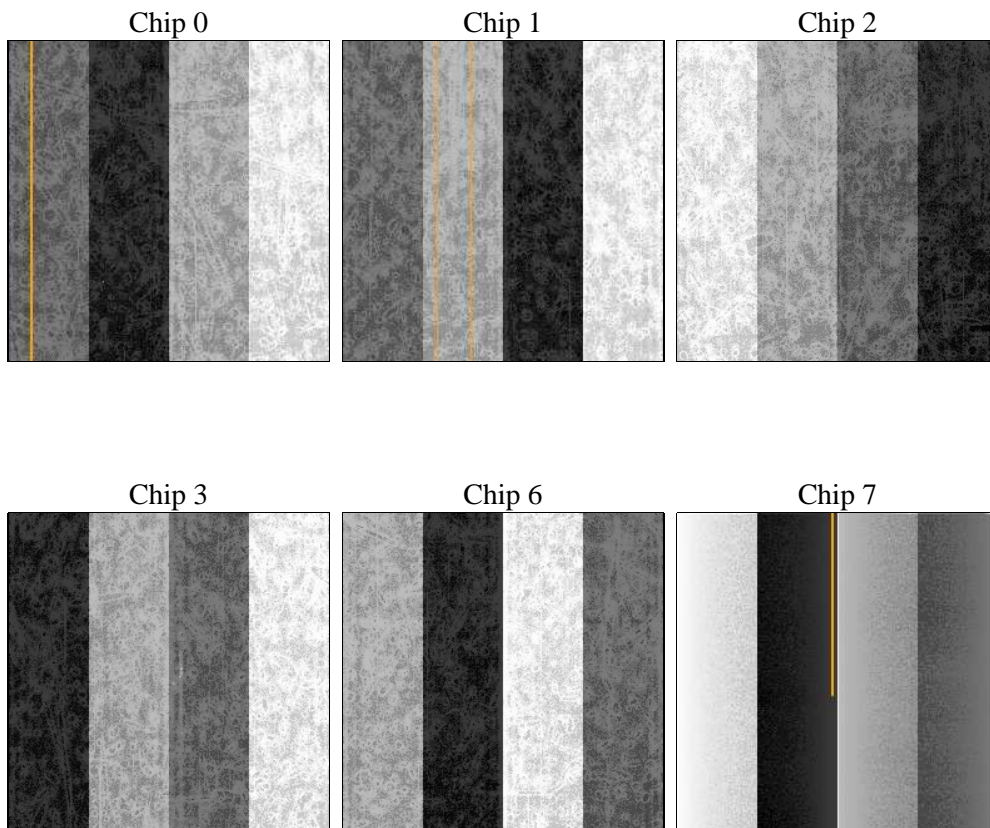
## 2 OBI

### 2.1 OBI

#### 2.1.1 Images



#### 2.1.2 Bias



### 2.1.3 Parameters

obi_num	0	Obi number	sched_exp_time	0.0	[s] Scheduled observation exposure time
ascdsver	8.4.4	Processing system revision	ontime	7017.161985755	Sum of GTIs [s]
caldsver	4.4.9	&#160	ontime0	7017.1209457517	Sum of GTIs [s]
date	2012-05-09T07:30:23	Date and time of file creation	ontime1	7017.0799057484	Sum of GTIs [s]
revision	2	Processing version of data	ontime2	7017.0388657451	Sum of GTIs [s]
			ontime3	7017.2030257583	Sum of GTIs [s]
			ontime6	7016.9978257418	Sum of GTIs [s]
			ontime7	7017.161985755	Sum of GTIs [s]
			l1events	948716	Number of level 1 events

### 2.1.4 Events

	ccd 0	ccd 1	ccd 2	ccd 3	ccd 6	ccd 7		ccd 0	ccd 1	ccd 2	ccd 3	ccd 6	ccd 7
level 1 events	149915	152050	154302	155373	159400	177676	grade 0 events	49816	49503	51134	51350	50864	25220
rejected events	57821	58986	61287	61966	63040	55751		33%	32%	33%	33%	31%	14%
rejected %	38%	38%	39%	39%	39%	31%	grade 1 events	346	329	361	366	314	147
								0%	0%	0%	0%	0%	0%
							grade 2 events	16268	17209	15952	15930	17057	26544
								10%	11%	10%	10%	10%	14%
							grade 3 events	6020	6039	6115	6397	6227	11532
								4%	3%	3%	4%	3%	6%
							grade 4 events	6027	6052	6285	6298	6077	11390
								4%	3%	4%	4%	3%	6%
							grade 5 events	3333	3437	3121	3685	3674	9333
								2%	2%	2%	2%	2%	5%
							grade 6 events	14008	14296	13584	13470	16191	47307
								9%	9%	8%	8%	10%	26%
							grade 7 events	54097	55185	57750	57877	58996	46203
								36%	36%	37%	37%	37%	26%

## 2.2 Compared Parameters

Parameter	Planned	Actual	Parameter	Planned	Actual
Instrument	ACIS	ACIS	Obspar format version number	7	7
Detector	ACIS-012367	ACIS-012367	Obspar file type	PREDICTED	ACTUAL
Grating	NONE	NONE	Obspar update status	NONE	UPDATED
Data mode	FAINT	FAINT	On-chip summing requested	N	N
Observation mode	SECONDARY	SECONDARY	Subarray requested	NONE	NONE
[deg] Pointing RA	0	6.528553073097058	Alternating exposures requested	N	N
[deg] Pointing Dec	0	20.58957589647106	[s] Primary exposure time	3.2	3.2
[deg] Pointing Roll	0.0	305.7233348144475			
[mm] SIM focus pos	-0.782348	-0.6828225247311905			
[mm] SIM defocus	0	0.8505141146731063			
[mm] SIM translation stage pos	-233.592463	250.466033080201			
[mm] SIM translation stage offset	0	-0.01005468664627074			
[s] Observation start time (MET)	318928502.279985	318928501.25499			
Observation start date	2008-02-09T07:15:02	2008-02-09T07:15:01			
[s] Observation end time (MET)	318941983.080639	318941982.05564			
Observation end date	2008-02-09T10:59:43	2008-02-09T10:59:42			
Read mode	TIMED	TIMED			

## **2.3 Star Slots**

## **2.4 FID Slots**

## **A Summary**

### **A.1 Status**

V&V Scientist	Jen Lauer
V&V Date (YYYY-MM-DD)	2012.05.10
V&V Edition	1
V&V Disposition and Status	OK
V&V Charge Time	7.017161985755

### **A.2 Comments**