

V&V Reference Report

L2 ASCDS Version : 8.4.4

Observation 57939 - L2 Version 2
Chandra X-Ray Center

L2 Processing Date : May 10 2012

Contents

1	Front	2
2	OBI	3
2.1	OBI	3
2.1.1	Images	3
2.1.2	Bias	3
2.1.3	Parameters	4
2.1.4	Events	4
2.2	Compared Parameters	5
2.3	Star Slots	6
2.4	FID Slots	6
A	Summary	7
A.1	Status	7
A.2	Comments	7

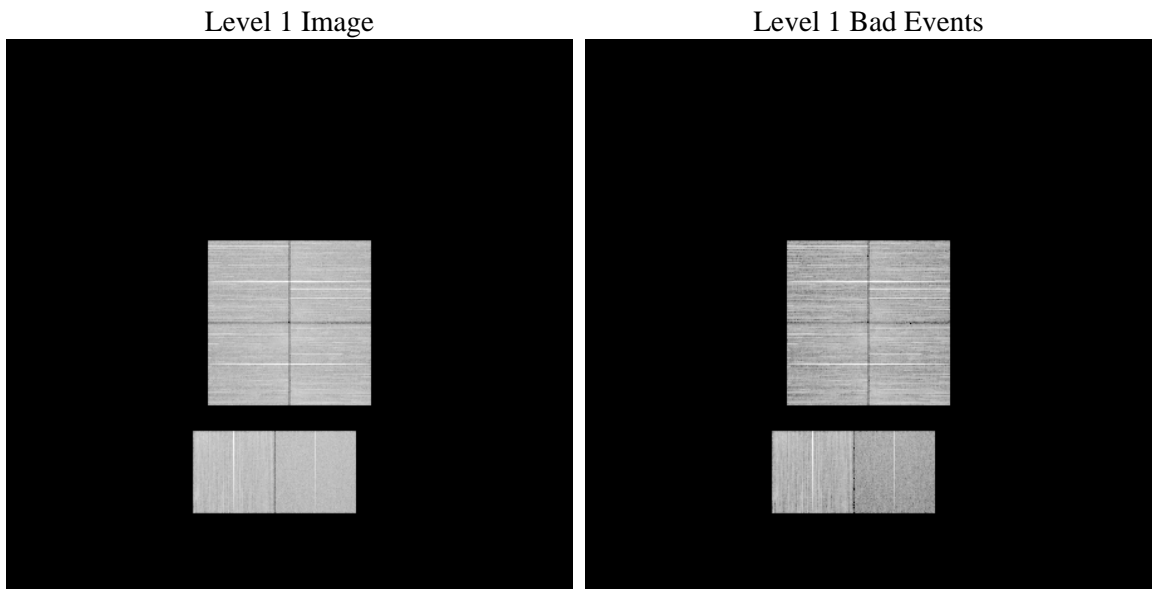
1 Front

seq_num	 	Sequence number
obs_id	57939	Observation id
title	ACIS-012367 diagnostics	Proposal title
observer	CHANDRA engineering request/realtime commanding	Principal investig
object	 	Source name
dtcycle	0	
cycle	P	events from which exps? Prim/Second/Both
ra_targ	0.0	Observer's specified target RA [deg]
dec_targ	0.0	Observer's specified target Dec [deg]
ra_nom	161.02503173236	Nominal RA [deg]
dec_nom	-17.983894279791	Nominal Dec [deg]
roll_nom	1.1476031248479	Nominal Roll [deg]
revision	2	Processing version of data
ontime	8258.2044615149	Sum of GTIs [s]
livetime	8153.6341041295	Livetime [s]
ontime0	6981.2117199302	Sum of GTIs [s]
ontime1	7246.9321445823	Sum of GTIs [s]
ontime2	6838.5532548428	Sum of GTIs [s]
ontime3	7016.9450907707	Sum of GTIs [s]
ontime6	7301.9471885562	Sum of GTIs [s]
ontime7	8258.2044615149	Sum of GTIs [s]
l2events	561083	Number of level 2 events

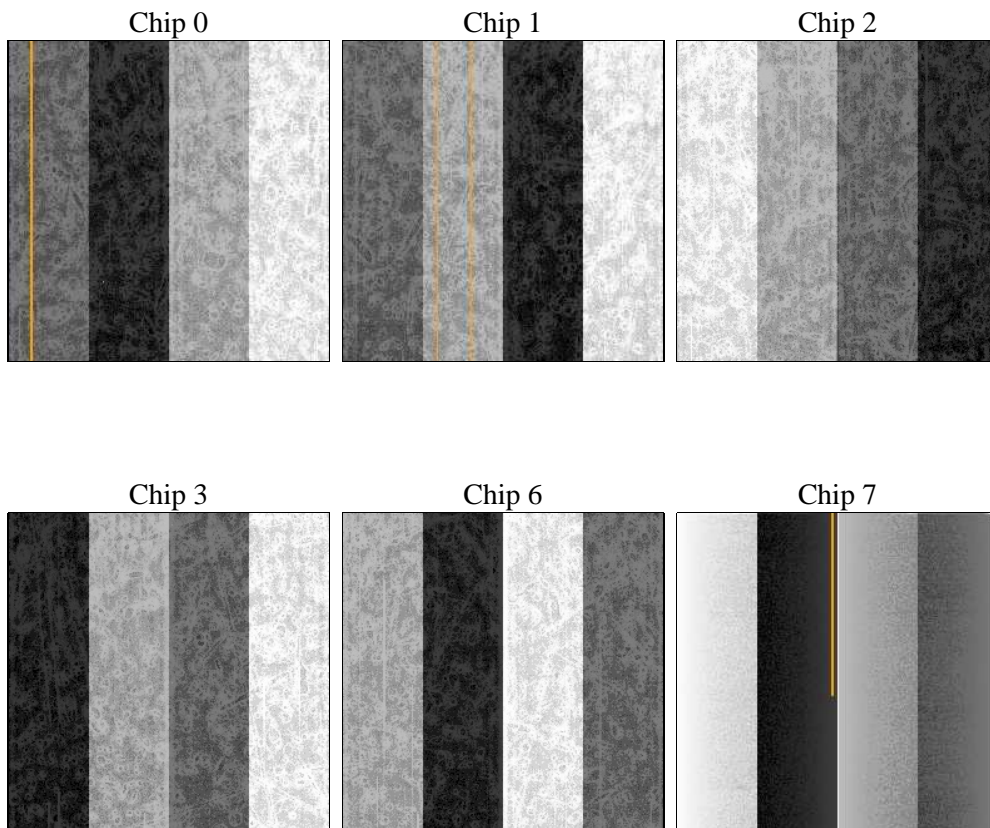
2 OBI

2.1 OBI

2.1.1 Images



2.1.2 Bias



2.1.3 Parameters

obi_num	0	Obi number	sched_exp_time	0.0	[s] Scheduled observation exposure time
ascdsver	8.4.4	Processing system revision	ontime	8258.2044615149	Sum of GTIs [s]
caldsver	4.4.9	 	ontime0	6981.2117199302	Sum of GTIs [s]
date	2012-05-10T12:57:56	Date and time of file creation	ontime1	7246.9321445823	Sum of GTIs [s]
revision	2	Processing version of data	ontime2	6838.5532548428	Sum of GTIs [s]
			ontime3	7016.9450907707	Sum of GTIs [s]
			ontime6	7301.9471885562	Sum of GTIs [s]
			ontime7	8258.2044615149	Sum of GTIs [s]
			l1events	1489994	Number of level 1 events

2.1.4 Events

	ccd 0	ccd 1	ccd 2	ccd 3	ccd 6	ccd 7		ccd 0	ccd 1	ccd 2	ccd 3	ccd 6	ccd 7
level 1 events	235209	256931	239273	257179	265804	235598	grade 0 events	46933	48174	47012	48190	50513	27515
rejected events	148192	166277	153083	168612	170011	92607		19%	18%	19%	18%	19%	11%
rejected %	63%	64%	63%	65%	63%	39%	grade 1 events	341	312	336	361	293	157
								0%	0%	0%	0%	0%	0%
							grade 2 events	15819	16953	15528	16031	17690	34833
								6%	6%	6%	6%	6%	14%
							grade 3 events	5891	5953	5667	6060	6163	12961
								2%	2%	2%	2%	2%	5%
							grade 4 events	5647	5853	5724	5945	6192	12946
								2%	2%	2%	2%	2%	5%
							grade 5 events	3271	3660	3120	3746	3740	10594
								1%	1%	1%	1%	1%	4%
							grade 6 events	12919	13966	12453	12508	15468	55072
								5%	5%	5%	4%	5%	23%
							grade 7 events	144388	162060	149433	164338	165745	81520
								61%	63%	62%	63%	62%	34%

2.2 Compared Parameters

Parameter	Planned	Actual
Instrument	ACIS	ACIS
Detector	ACIS-012367	ACIS-012367
Grating	NONE	NONE
Data mode	FAINT	FAINT
Observation mode	SECONDARY	SECONDARY
[deg] Pointing RA	0	161.0250317323639
[deg] Pointing Dec	0	-17.98389427979141
[deg] Pointing Roll	0.0	1.147603124847943
[mm] SIM focus pos	-0.782348	-0.6828225247311905
[mm] SIM defocus	0	0.8505141146731063
[mm] SIM translation stage pos	-233.592463	250.466033080201
[mm] SIM translation stage offset	0	-0.01005468664627074
[s] Observation start time (MET)	320564972.259431	320564971.23443
Observation start date	2008-02-28T05:49:32	2008-02-28T05:49:31
[s] Observation end time (MET)	320588303.310564	320588302.28556
Observation end date	2008-02-28T12:18:23	2008-02-28T12:18:22
Read mode	TIMED	TIMED

Parameter	Planned	Actual
Obspar format version number	7	7
Obspar file type	PREDICTED	ACTUAL
Obspar update status	NONE	UPDATED
On-chip summing requested	N	N
Subarray requested	NONE	NONE
Alternating exposures requested	N	N
[s] Primary exposure time	3.2	3.2

2.3 Star Slots

2.4 FID Slots

A Summary

A.1 Status

V&V Scientist	Jen Lauer
V&V Date (YYYY-MM-DD)	2012.05.13
V&V Edition	1
V&V Disposition and Status	OK
V&V Charge Time	8.2582044615149

A.2 Comments