

V&V Reference Report

L2 ASCDS Version : 8.4.4

Observation 57917 - L2 Version 2
Chandra X-Ray Center

L2 Processing Date : May 11 2012

Contents

1	Front	2
2	OBI	3
2.1	OBI	3
2.1.1	Images	3
2.1.2	Bias	3
2.1.3	Parameters	4
2.1.4	Events	4
2.2	Compared Parameters	5
2.3	Star Slots	6
2.4	FID Slots	6
A	Summary	7
A.1	Status	7
A.2	Comments	7

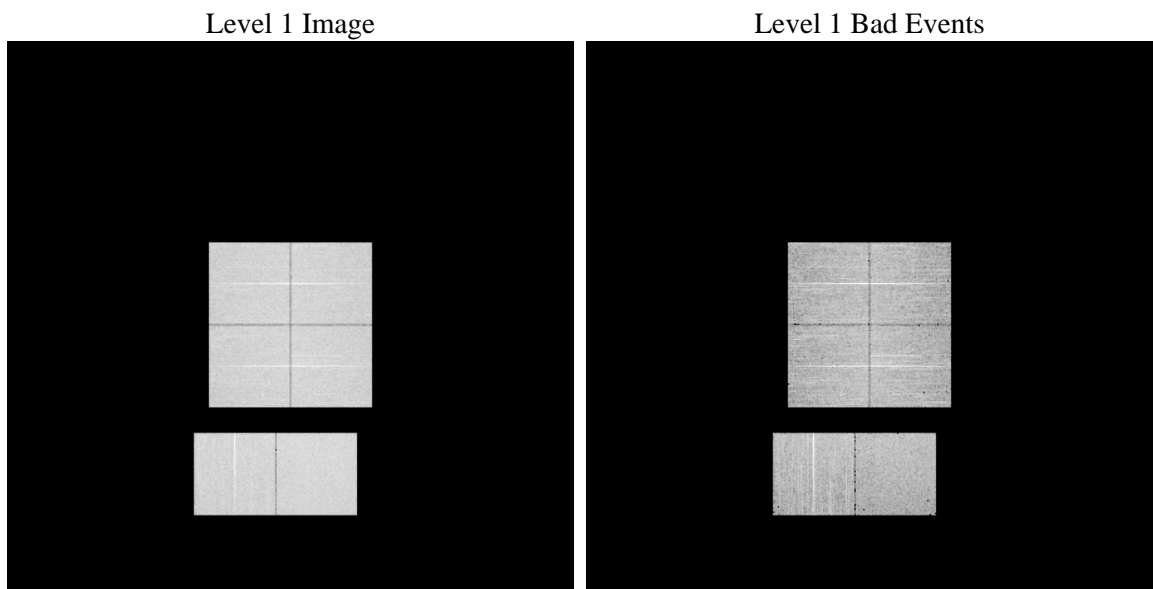
1 Front

seq_num	 	Sequence number
obs_id	57917	Observation id
title	ACIS-012367 diagnostics	Proposal title
observer	CHANDRA engineering request/realtime commanding	Principal investig
object	 	Source name
dtcycle	0	
cycle	P	events from which exps? Prim/Second/Both
ra_targ	0.0	Observer's specified target RA [deg]
dec_targ	0.0	Observer's specified target Dec [deg]
ra_nom	189.96932551971	Nominal RA [deg]
dec_nom	24.002097279656	Nominal Dec [deg]
roll_nom	143.81833650459	Nominal Roll [deg]
revision	2	Processing version of data
ontime	6463.9999759793	Sum of GTIs [s]
livetime	6382.14891613	Livetime [s]
ontime0	6463.9999759793	Sum of GTIs [s]
ontime1	6463.9999759793	Sum of GTIs [s]
ontime2	6463.9999759793	Sum of GTIs [s]
ontime3	6463.9999759793	Sum of GTIs [s]
ontime6	6463.9999759793	Sum of GTIs [s]
ontime7	6463.9999759793	Sum of GTIs [s]
l2events	584938	Number of level 2 events

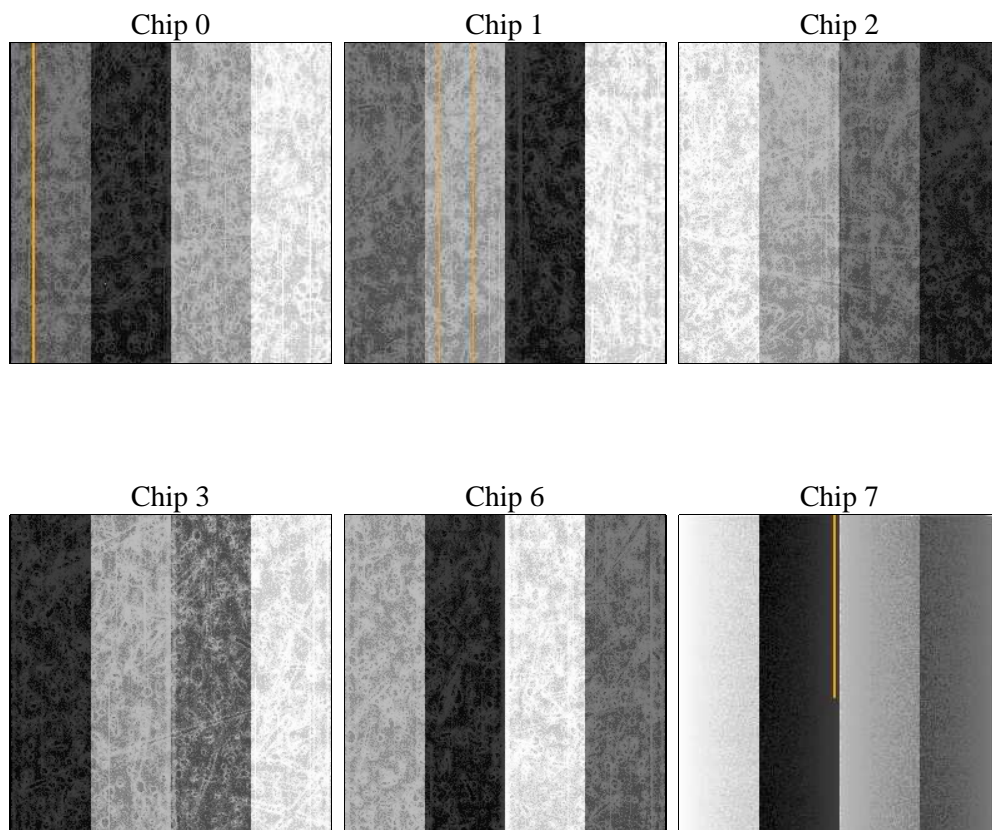
2 OBI

2.1 OBI

2.1.1 Images



2.1.2 Bias



2.1.3 Parameters

obi_num	0	Obi number	sched_exp_time	0.0	[s] Scheduled observation exposure time
ascdsver	8.4.4	Processing system revision	ontime	6463.9999759793	Sum of GTIs [s]
caldsver	4.4.9	 	ontime0	6463.9999759793	Sum of GTIs [s]
date	2012-05-11T14:08:50	Date and time of file creation	ontime1	6463.9999759793	Sum of GTIs [s]
revision	2	Processing version of data	ontime2	6463.9999759793	Sum of GTIs [s]
			ontime3	6463.9999759793	Sum of GTIs [s]
			ontime6	6463.9999759793	Sum of GTIs [s]
			ontime7	6463.9999759793	Sum of GTIs [s]
			l1events	963468	Number of level 1 events

2.1.4 Events

	ccd 0	ccd 1	ccd 2	ccd 3	ccd 6	ccd 7		ccd 0	ccd 1	ccd 2	ccd 3	ccd 6	ccd 7
level 1 events	156223	153840	154974	159329	164153	174949	grade 0 events	52022	50707	52070	53711	52493	26151
rejected events	58265	55600	59292	60216	61598	51744		33%	32%	33%	33%	31%	14%
rejected %	37%	36%	38%	37%	37%	29%	grade 1 events	382	320	429	441	318	121
								0%	0%	0%	0%	0%	0%
							grade 2 events	17064	18551	15969	16760	18081	27499
								10%	12%	10%	10%	11%	15%
							grade 3 events	6436	6240	6266	6503	6368	11000
								4%	4%	4%	4%	3%	6%
							grade 4 events	6276	6006	6267	6572	6299	10540
								4%	3%	4%	4%	3%	6%
							grade 5 events	3095	3206	2981	3468	3477	8344
								1%	2%	1%	2%	2%	4%
							grade 6 events	16160	16804	15185	15567	19386	48015
								10%	10%	9%	9%	11%	27%
							grade 7 events	54788	52006	55807	56307	57731	43279
								35%	33%	36%	35%	35%	24%

2.2 Compared Parameters

Parameter	Planned	Actual	Parameter	Planned	Actual
Instrument	ACIS	ACIS	Obspar format version number	7	7
Detector	ACIS-012367	ACIS-012367	Obspar file type	PREDICTED	ACTUAL
Grating	NONE	NONE	Obspar update status	NONE	UPDATED
Data mode	FAINT	FAINT	On-chip summing requested	N	N
Observation mode	SECONDARY	SECONDARY	Subarray requested	NONE	NONE
[deg] Pointing RA	0	189.9693255197065	Alternating exposures requested	N	N
[deg] Pointing Dec	0	24.00209727965624	[s] Primary exposure time	3.2	3.2
[deg] Pointing Roll	0.0	143.8183365045921			
[mm] SIM focus pos	-0.782348	-0.7809083437167272			
[mm] SIM defocus	0	0.7524282956875696			
[mm] SIM translation stage pos	-233.592463	250.466033080201			
[mm] SIM translation stage offset	0	-0.01005468664627074			
[s] Observation start time (MET)	321898253.374216	321898252.34922			
Observation start date	2008-03-14T16:10:53	2008-03-14T16:10:52			
[s] Observation end time (MET)	321914659.525013	321914658.50002			
Observation end date	2008-03-14T20:44:20	2008-03-14T20:44:18			
Read mode	TIMED	TIMED			

2.3 Star Slots

2.4 FID Slots

A Summary

A.1 Status

V&V Scientist	Jen Lauer
V&V Date (YYYY-MM-DD)	2012.05.14
V&V Edition	1
V&V Disposition and Status	OK
V&V Charge Time	6.4639999759793

A.2 Comments