

# V&V Reference Report

## L2 ASCDS Version : 8.4.4

Observation 57777 - L2 Version 2  
Chandra X-Ray Center

L2 Processing Date : May 16 2012

## Contents

<b>1</b>	<b>Front</b>	<b>2</b>
<b>2</b>	<b>OBI</b>	<b>3</b>
2.1	OBI . . . . .	3
2.1.1	Images . . . . .	3
2.1.2	Bias . . . . .	3
2.1.3	Parameters . . . . .	4
2.1.4	Events . . . . .	4
2.2	Compared Parameters . . . . .	5
2.3	Star Slots . . . . .	6
2.4	FID Slots . . . . .	6
<b>A</b>	<b>Summary</b>	<b>7</b>
A.1	Status . . . . .	7
A.2	Comments . . . . .	7

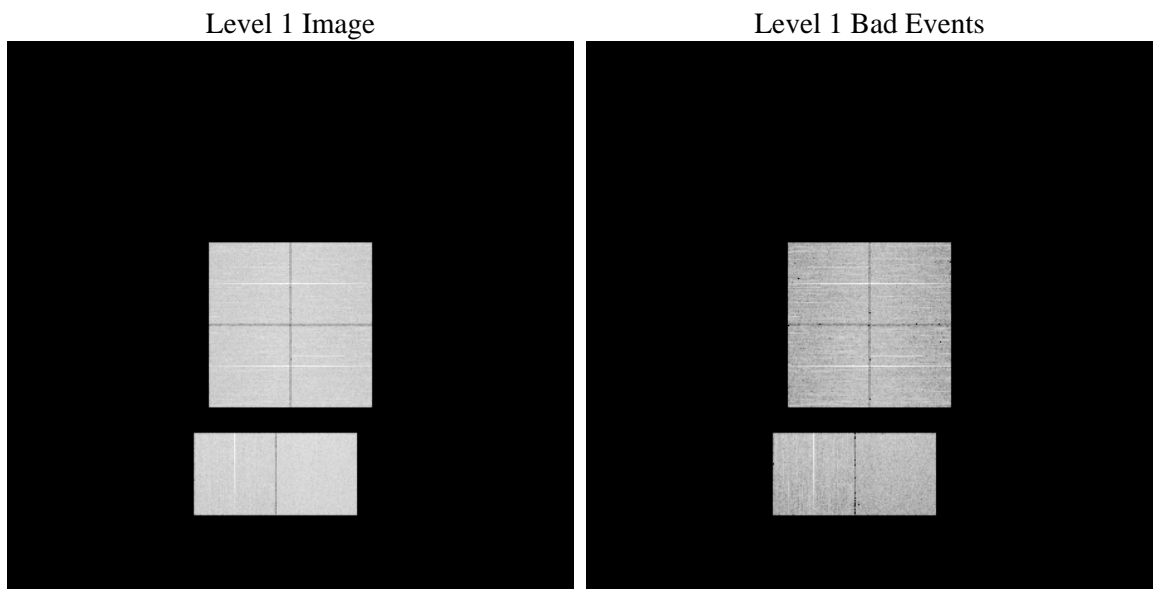
# 1 Front

seq_num	&#160	Sequence number
obs_id	57777	Observation id
title	ACIS-012367 diagnostics	Proposal title
observer	CHANDRA engineering request/realtime commanding	Principal investig
object	&#160	Source name
dtcycle	0	&#160
cycle	P	events from which exps? Prim/Second/Both
ra_targ	0.0	Observer's specified target RA [deg]
dec_targ	0.0	Observer's specified target Dec [deg]
ra_nom	239.48806755605	Nominal RA [deg]
dec_nom	-2.3261358522073	Nominal Dec [deg]
roll_nom	212.62659608729	Nominal Roll [deg]
revision	2	Processing version of data
ontime	8271.999969244	Sum of GTIs [s]
livetime	8167.254924833	Livetime [s]
ontime0	8271.999969244	Sum of GTIs [s]
ontime1	8271.999969244	Sum of GTIs [s]
ontime2	8271.999969244	Sum of GTIs [s]
ontime3	8271.999969244	Sum of GTIs [s]
ontime6	8271.999969244	Sum of GTIs [s]
ontime7	8271.999969244	Sum of GTIs [s]
l2events	588602	Number of level 2 events

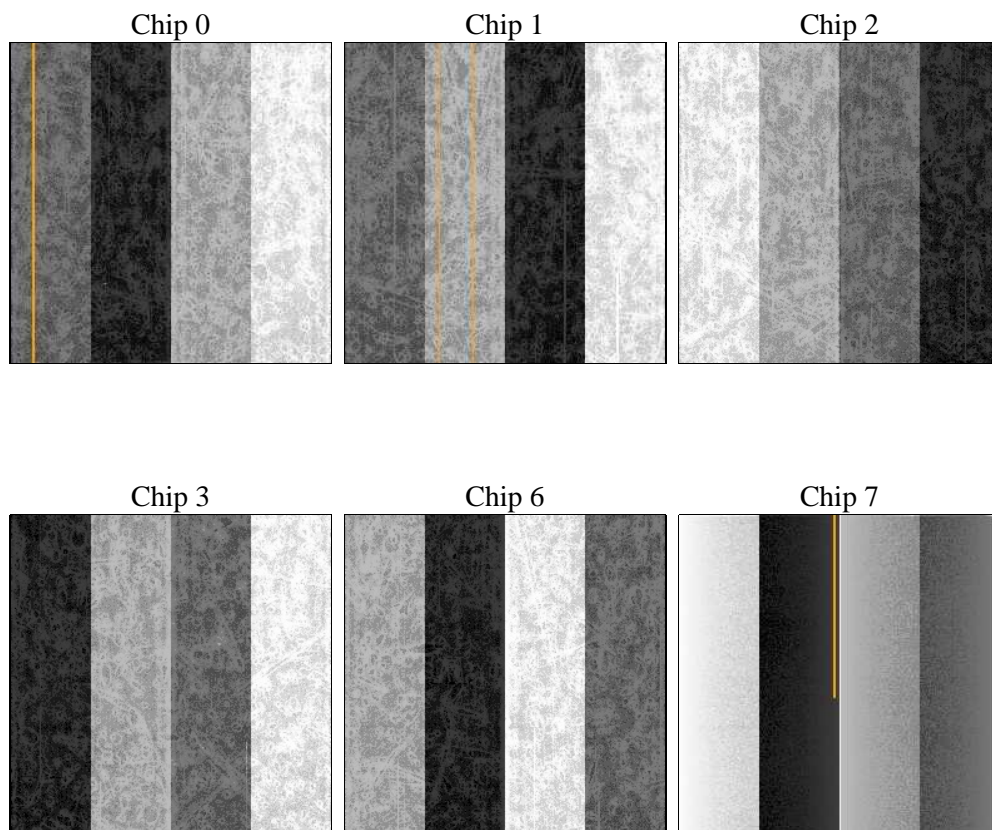
## 2 OBI

### 2.1 OBI

#### 2.1.1 Images



#### 2.1.2 Bias



### 2.1.3 Parameters

obi_num	0	Obi number	sched_exp_time	0.0	[s] Scheduled observation exposure time
ascdsver	8.4.4	Processing system revision	ontime	8271.999969244	Sum of GTIs [s]
caldsver	4.4.9	&#160	ontime0	8271.999969244	Sum of GTIs [s]
date	2012-05-16T04:34:46	Date and time of file creation	ontime1	8271.999969244	Sum of GTIs [s]
revision	2	Processing version of data	ontime2	8271.999969244	Sum of GTIs [s]
			ontime3	8271.999969244	Sum of GTIs [s]
			ontime6	8271.999969244	Sum of GTIs [s]
			ontime7	8271.999969244	Sum of GTIs [s]
			l1events	1037718	Number of level 1 events

### 2.1.4 Events

	ccd 0	ccd 1	ccd 2	ccd 3	ccd 6	ccd 7		ccd 0	ccd 1	ccd 2	ccd 3	ccd 6	ccd 7
level 1 events	165182	163540	169100	169369	172869	197658	grade 0 events	52007	52065	53642	53545	53066	26073
rejected events	68954	66287	71721	71845	72169	65661		31%	31%	31%	31%	30%	13%
rejected %	41%	40%	42%	42%	41%	33%	grade 1 events	347	355	399	422	340	152
								0%	0%	0%	0%	0%	0%
							grade 2 events	17143	17615	16511	16787	18125	28788
								10%	10%	9%	9%	10%	14%
							grade 3 events	6427	6287	6416	6470	6561	12511
								3%	3%	3%	3%	3%	6%
							grade 4 events	6356	6370	6571	6681	6283	12372
								3%	3%	3%	3%	3%	6%
							grade 5 events	3861	4033	3677	4242	4105	10668
								2%	2%	2%	2%	2%	5%
							grade 6 events	14295	14916	14239	14041	16665	52253
								8%	9%	8%	8%	9%	26%
							grade 7 events	64746	61899	67645	67181	67724	54841
								39%	37%	40%	39%	39%	27%

## 2.2 Compared Parameters

Parameter	Planned	Actual
Instrument	ACIS	ACIS
Detector	ACIS-012367	ACIS-012367
Grating	NONE	NONE
Data mode	FAINT	FAINT
Observation mode	SECONDARY	SECONDARY
[deg] Pointing RA	0	239.4880675560511
[deg] Pointing Dec	0	-2.326135852207267
[deg] Pointing Roll	0.0	212.6265960872871
[mm] SIM focus pos	-1.429586	-0.7809083437167272
[mm] SIM defocus	0.1037507710433287	0.7524282956875696
[mm] SIM translation stage pos	250.455976	250.466033080201
[mm] SIM translation stage offset	0	-0.01005468664627074
[s] Observation start time (MET)	329020656.87124	329020655.84623
Observation start date	2008-06-05T02:37:37	2008-06-05T02:37:35
[s] Observation end time (MET)	329041966.622281	329041965.59727
Observation end date	2008-06-05T08:32:47	2008-06-05T08:32:45
Read mode	TIMED	TIMED

Parameter	Planned	Actual
Obspar format version number	7	7
Obspar file type	PREDICTED	ACTUAL
Obspar update status	NONE	UPDATED
On-chip summing requested	N	N
Subarray requested	NONE	NONE
Alternating exposures requested	N	N
[s] Primary exposure time	3.2	3.2

## **2.3 Star Slots**

## **2.4 FID Slots**

## A Summary

### A.1 Status

V&V Scientist	Beth Sundheim
V&V Date (YYYY-MM-DD)	2012.05.22
V&V Edition	1
V&V Disposition and Status	OK
V&V Charge Time	8.271999969244

### A.2 Comments