

V&V Reference Report

L2 ASCDS Version : 8.4.4

Observation 57675 - L2 Version 2
Chandra X-Ray Center

L2 Processing Date : May 18 2012

Contents

1	Front	2
2	OBI	3
2.1	OBI	3
2.1.1	Images	3
2.1.2	Bias	3
2.1.3	Parameters	4
2.1.4	Events	4
2.2	Compared Parameters	5
2.3	Star Slots	6
2.4	FID Slots	6
A	Summary	7
A.1	Status	7
A.2	Comments	7

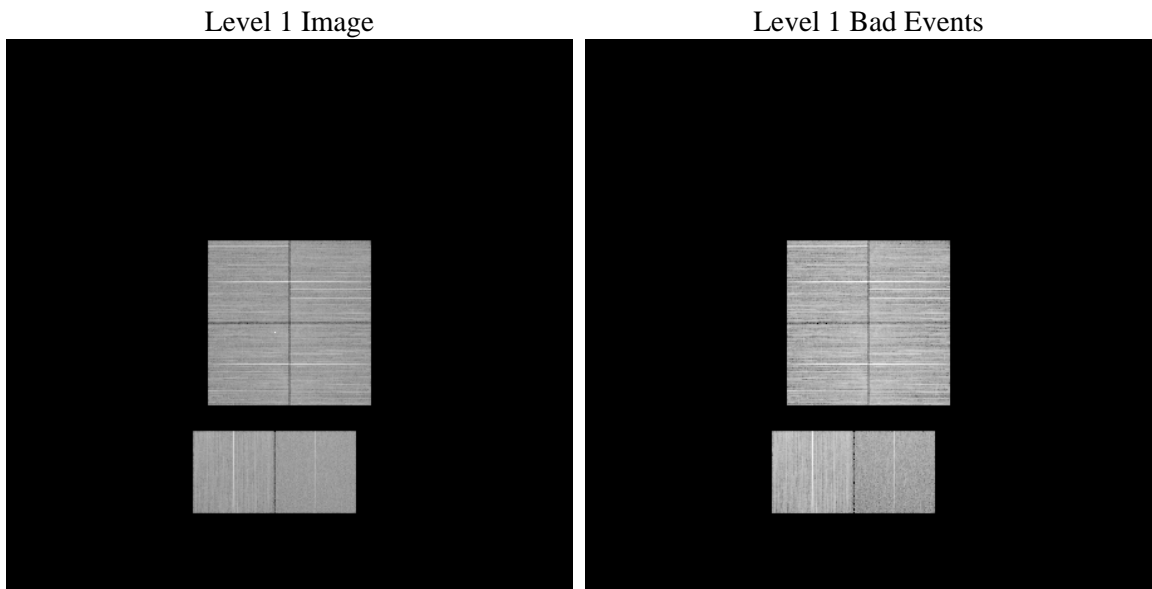
1 Front

seq_num	 	Sequence number
obs_id	57675	Observation id
title	ACIS-012367 diagnostics	Proposal title
observer	CHANDRA engineering request/realtime commanding	Principal investig
object	 	Source name
dtcycle	0	
cycle	P	events from which exps? Prim/Second/Both
ra_targ	0.0	Observer's specified target RA [deg]
dec_targ	0.0	Observer's specified target Dec [deg]
ra_nom	293.98218525973	Nominal RA [deg]
dec_nom	5.9707256925375	Nominal Dec [deg]
roll_nom	206.93896029076	Nominal Roll [deg]
revision	2	Processing version of data
ontime	7886.9327435493	Sum of GTIs [s]
livetime	7787.0636522098	Livetime [s]
ontime0	6911.3496067524	Sum of GTIs [s]
ontime1	7190.0349057913	Sum of GTIs [s]
ontime2	6802.9094697237	Sum of GTIs [s]
ontime3	6995.6979150176	Sum of GTIs [s]
ontime6	7212.6397971511	Sum of GTIs [s]
ontime7	7886.9327435493	Sum of GTIs [s]
l2events	507141	Number of level 2 events

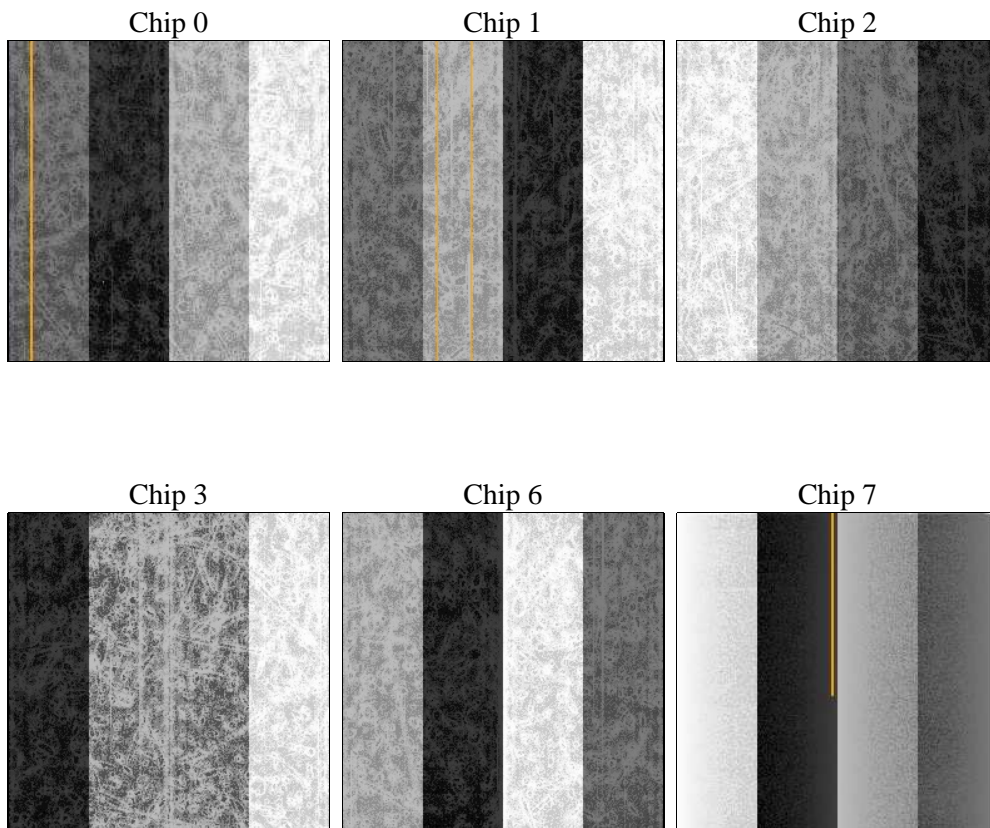
2 OBI

2.1 OBI

2.1.1 Images



2.1.2 Bias



2.1.3 Parameters

obi_num	0	Obi number	sched_exp_time	0.0	[s] Scheduled observation exposure time
ascdsver	8.4.4	Processing system revision	ontime	7886.9327435493	Sum of GTIs [s]
caldsver	4.4.9	 	ontime0	6911.3496067524	Sum of GTIs [s]
date	2012-05-18T15:57:35	Date and time of file creation	ontime1	7190.0349057913	Sum of GTIs [s]
revision	2	Processing version of data	ontime2	6802.9094697237	Sum of GTIs [s]
			ontime3	6995.6979150176	Sum of GTIs [s]
			ontime6	7212.6397971511	Sum of GTIs [s]
			ontime7	7886.9327435493	Sum of GTIs [s]
			l1events	1420528	Number of level 1 events

2.1.4 Events

	ccd 0	ccd 1	ccd 2	ccd 3	ccd 6	ccd 7		ccd 0	ccd 1	ccd 2	ccd 3	ccd 6	ccd 7
level 1 events	230879	242505	235231	246061	249771	216081	grade 0 events	42141	43630	43991	44120	44985	24406
rejected events	152031	160092	155328	165143	163531	88022		18%	17%	18%	17%	18%	11%
rejected %	65%	66%	66%	67%	65%	40%	grade 1 events	312	247	334	351	274	192
								0%	0%	0%	0%	0%	0%
							grade 2 events	14428	15437	14257	14478	16052	30896
								6%	6%	6%	5%	6%	14%
							grade 3 events	5227	5365	5196	5446	5511	11535
								2%	2%	2%	2%	2%	5%
							grade 4 events	5234	5329	5235	5323	5625	11687
								2%	2%	2%	2%	2%	5%
							grade 5 events	3367	3529	3051	3712	3773	10512
								1%	1%	1%	1%	1%	4%
							grade 6 events	11862	12694	11224	11589	14099	49589
								5%	5%	4%	4%	5%	22%
							grade 7 events	148308	156274	151943	161042	159452	77264
								64%	64%	64%	65%	63%	35%

2.2 Compared Parameters

Parameter	Planned	Actual	Parameter	Planned	Actual
Instrument	ACIS	ACIS	Obspar format version number	7	7
Detector	ACIS-012367	ACIS-012367	Obspar file type	PREDICTED	ACTUAL
Grating	NONE	NONE	Obspar update status	NONE	UPDATED
Data mode	FAINT	FAINT	On-chip summing requested	N	N
Observation mode	SECONDARY	SECONDARY	Subarray requested	NONE	NONE
[deg] Pointing RA	0	293.9821852597276	Alternating exposures requested	N	N
[deg] Pointing Dec	0	5.970725692537463	[s] Primary exposure time	3.2	3.2
[deg] Pointing Roll	0.0	206.9389602907617			
[mm] SIM focus pos	-1.429586	-0.7809083437167272			
[mm] SIM defocus	0.1037507710433287	0.7524282956875696			
[mm] SIM translation stage pos	250.455976	250.466033080201			
[mm] SIM translation stage offset	0	-0.01005468664627074			
[s] Observation start time (MET)	333549207.542754	333549206.51778			
Observation start date	2008-07-27T12:33:28	2008-07-27T12:33:26			
[s] Observation end time (MET)	333559266.893246	333559265.86827			
Observation end date	2008-07-27T15:21:07	2008-07-27T15:21:05			
Read mode	TIMED	TIMED			

2.3 Star Slots

2.4 FID Slots

A Summary

A.1 Status

V&V Scientist	Beth Sundheim
V&V Date (YYYY-MM-DD)	2012.05.25
V&V Edition	1
V&V Disposition and Status	OK
V&V Charge Time	7.8869327435493

A.2 Comments