

V&V Reference Report

L2 ASCDS Version : 8.4.4

Observation 57598 - L2 Version 2
Chandra X-Ray Center

L2 Processing Date : May 21 2012

Contents

1	Front	2
2	OBI	3
2.1	OBI	3
2.1.1	Images	3
2.1.2	Bias	3
2.1.3	Parameters	4
2.1.4	Events	4
2.2	Compared Parameters	5
2.3	Star Slots	6
2.4	FID Slots	6
A	Summary	7
A.1	Status	7
A.2	Comments	7

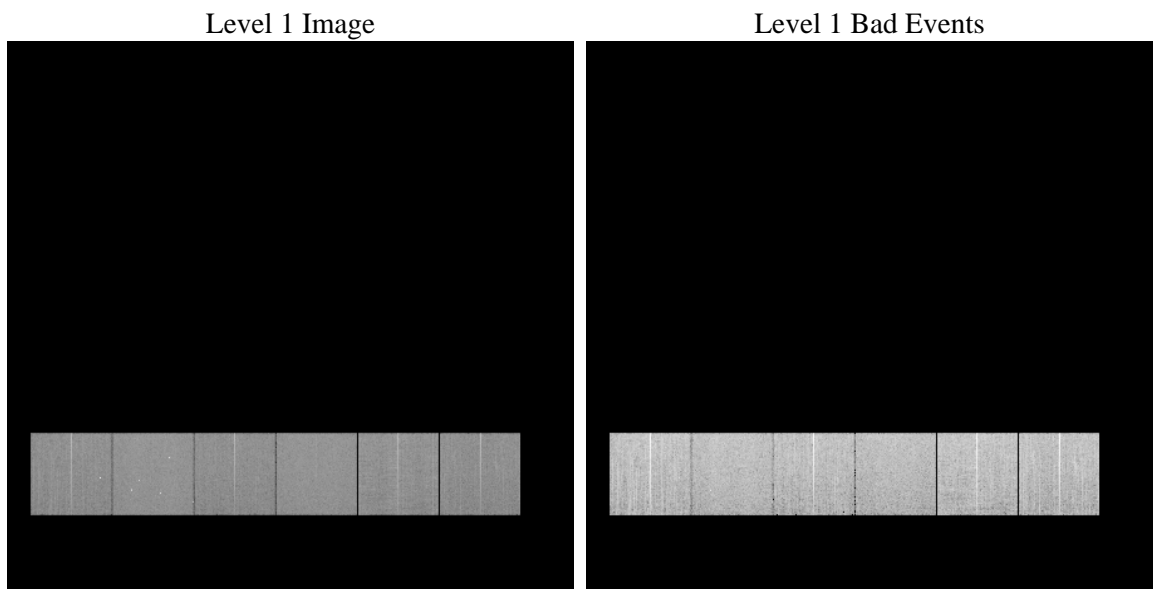
1 Front

seq_num	 	Sequence number
obs_id	57598	Observation id
title	ACIS-456789 diagnostics	Proposal title
observer	CHANDRA engineering request/realtime commanding	Principal investig
object	 	Source name
dtcycle	0	
cycle	P	events from which exps? Prim/Second/Both
ra_targ	0.0	Observer's specified target RA [deg]
dec_targ	0.0	Observer's specified target Dec [deg]
ra_nom	336.00027033293	Nominal RA [deg]
dec_nom	14.971273348299	Nominal Dec [deg]
roll_nom	237.61398286586	Nominal Roll [deg]
revision	2	Processing version of data
ontime	8271.999969244	Sum of GTIs [s]
livetime	8167.254924833	Livetime [s]
ontime4	8271.999969244	Sum of GTIs [s]
ontime5	8271.999969244	Sum of GTIs [s]
ontime6	8271.999969244	Sum of GTIs [s]
ontime7	8271.999969244	Sum of GTIs [s]
ontime8	8271.999969244	Sum of GTIs [s]
ontime9	8268.7589688897	Sum of GTIs [s]
l2events	586438	Number of level 2 events

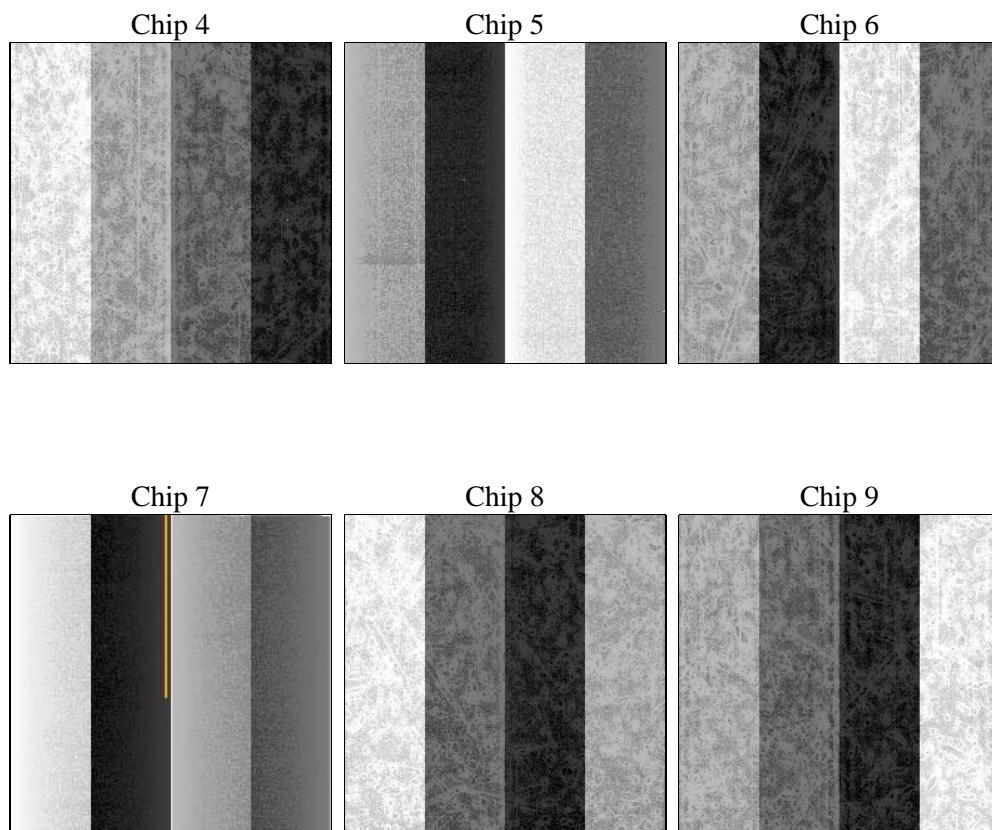
2 OBI

2.1 OBI

2.1.1 Images



2.1.2 Bias



2.1.3 Parameters

obi_num	0	Obi number	sched_exp_time	0.0	[s] Scheduled observation exposure time
ascdsver	8.4.4	Processing system revision	ontime	8271.999969244	Sum of GTIs [s]
caldsver	4.4.9	 	ontime4	8271.999969244	Sum of GTIs [s]
date	2012-05-21T20:52:04	Date and time of file creation	ontime5	8271.999969244	Sum of GTIs [s]
revision	2	Processing version of data	ontime6	8271.999969244	Sum of GTIs [s]
			ontime7	8271.999969244	Sum of GTIs [s]
			ontime8	8271.999969244	Sum of GTIs [s]
			ontime9	8268.7589688897	Sum of GTIs [s]
			l1events	1098192	Number of level 1 events

2.1.4 Events

	ccd 4	ccd 5	ccd 6	ccd 7	ccd 8	ccd 9		ccd 4	ccd 5	ccd 6	ccd 7	ccd 8	ccd 9
level 1 events	173806	198978	170176	194316	190303	170613	grade 0 events	52286	20614	49560	24666	54064	49044
rejected events	82843	72205	76241	67800	82658	79234		30%	10%	29%	12%	28%	28%
rejected %	47%	36%	44%	34%	43%	46%	grade 1 events	518	239	322	142	371	361
								0%	0%	0%	0%	0%	0%
							grade 2 events	14381	44835	16638	27385	19968	15827
								8%	22%	9%	14%	10%	9%
							grade 3 events	6353	6068	6070	11758	7741	6101
								3%	3%	3%	6%	4%	3%
							grade 4 events	6108	5949	6162	11782	7572	6080
								3%	2%	3%	6%	3%	3%
							grade 5 events	4214	9851	4545	11169	5648	4862
								2%	4%	2%	5%	2%	2%
							grade 6 events	11876	49358	15537	50969	18342	14370
								6%	24%	9%	26%	9%	8%
							grade 7 events	78070	62064	71342	56445	76597	73968
								44%	31%	41%	29%	40%	43%

2.2 Compared Parameters

Parameter	Planned	Actual	Parameter	Planned	Actual
Instrument	ACIS	ACIS	Obspar format version number	7	7
Detector	ACIS-456789	ACIS-456789	Obspar file type	PREDICTED	ACTUAL
Grating	NONE	NONE	Obspar update status	NONE	UPDATED
Data mode	FAINT	FAINT	Number of optional ACIS chips dropped	0	0
Observation mode	SECONDARY	SECONDARY	On-chip summing requested	N	N
[deg] Pointing RA	0	336.00027033293	Subarray requested	NONE	NONE
[deg] Pointing Dec	0	14.97127334829874	Alternating exposures requested	N	N
[deg] Pointing Roll	0.0	237.6139828658599	[s] Primary exposure time	3.2	3.2
[mm] SIM focus pos	-1.429586	-0.7809083437167272			
[mm] SIM defocus	0.1037507710433287	0.7524282956875696			
[mm] SIM translation stage pos	250.455976	250.466033080201			
[mm] SIM translation stage offset	0	-0.01005468664627074			
[s] Observation start time (MET)	338383381.739895	338383380.71488			
Observation start date	2008-09-21T11:23:02	2008-09-21T11:23:00			
[s] Observation end time (MET)	338405794.390999	338405793.36599			
Observation end date	2008-09-21T17:36:34	2008-09-21T17:36:33			
Read mode	TIMED	TIMED			

2.3 Star Slots

2.4 FID Slots

A Summary

A.1 Status

V&V Scientist	Beth Sundheim
V&V Date (YYYY-MM-DD)	2012.05.30
V&V Edition	1
V&V Disposition and Status	OK
V&V Charge Time	8.271999969244

A.2 Comments