

V&V Reference Report

L2 ASCDS Version : 8.4.4

Observation 57499 - L2 Version 2
Chandra X-Ray Center

L2 Processing Date : May 24 2012

Contents

1	Front	2
2	OBI	3
2.1	OBI	3
2.1.1	Images	3
2.1.2	Bias	3
2.1.3	Parameters	4
2.1.4	Events	4
2.2	Compared Parameters	5
2.3	Star Slots	6
2.4	FID Slots	6
A	Summary	7
A.1	Status	7
A.2	Comments	7

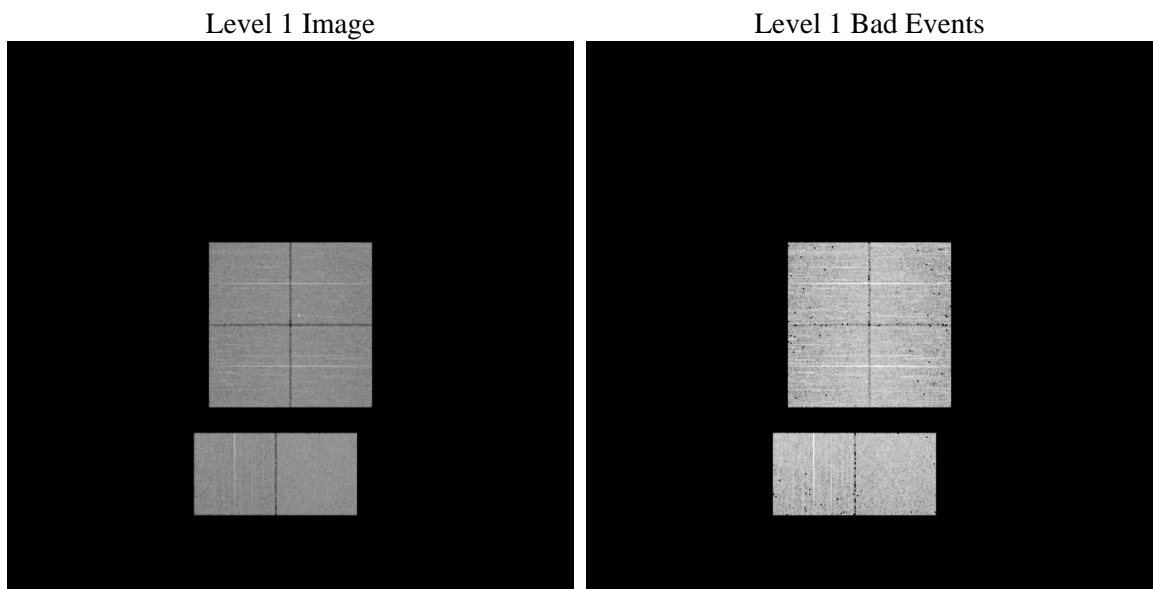
1 Front

seq_num	 	Sequence number
obs_id	57499	Observation id
title	ACIS-012367 diagnostics	Proposal title
observer	CHANDRA engineering request/realtime commanding	Principal investig
object	 	Source name
dtcycle	0	
cycle	P	events from which exps? Prim/Second/Both
ra_targ	0.0	Observer's specified target RA [deg]
dec_targ	0.0	Observer's specified target Dec [deg]
ra_nom	62.961631117581	Nominal RA [deg]
dec_nom	42.993986182143	Nominal Dec [deg]
roll_nom	159.21756381905	Nominal Roll [deg]
revision	2	Processing version of data
ontime	4802.6184436679	Sum of GTIs [s]
livetime	4741.8047971445	Livetime [s]
ontime0	4803.1999821663	Sum of GTIs [s]
ontime1	4803.1999821663	Sum of GTIs [s]
ontime2	4803.1999821663	Sum of GTIs [s]
ontime3	4802.5774036646	Sum of GTIs [s]
ontime6	4803.1999821663	Sum of GTIs [s]
ontime7	4802.6184436679	Sum of GTIs [s]
l2events	327124	Number of level 2 events

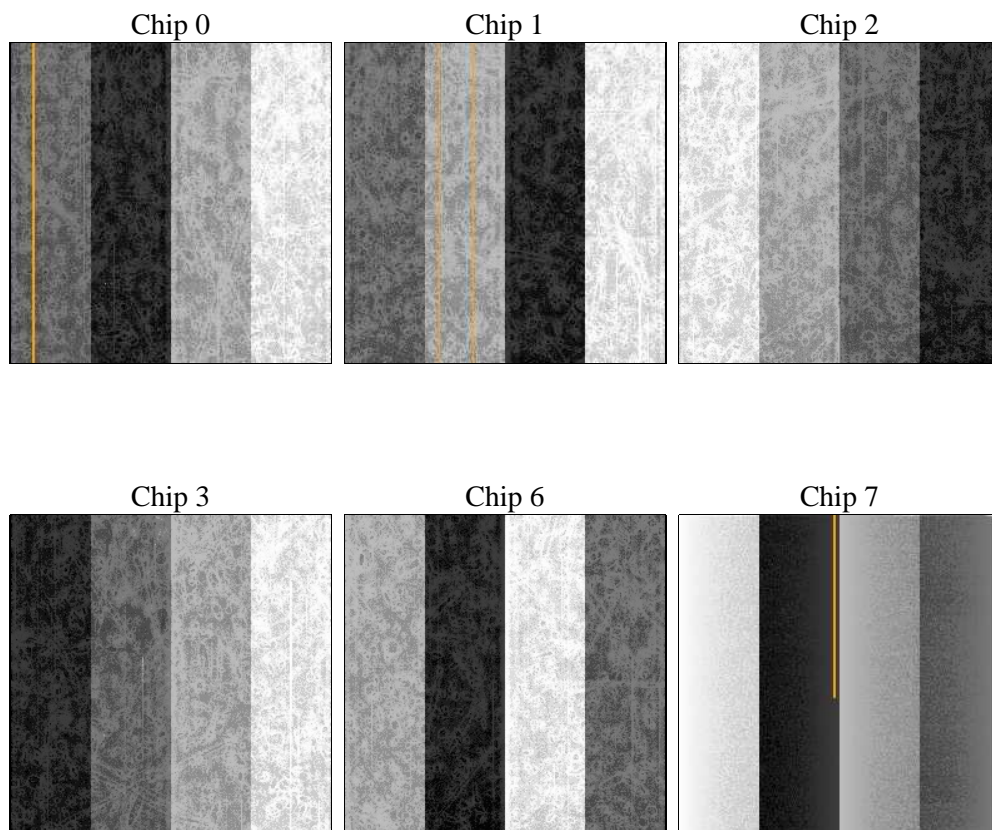
2 OBI

2.1 OBI

2.1.1 Images



2.1.2 Bias



2.1.3 Parameters

obi_num	0	Obi number	sched_exp_time	0.0	[s] Scheduled observation exposure time
ascdsver	8.4.4	Processing system revision	ontime	4802.6184436679	Sum of GTIs [s]
caldbver	4.4.9	 	ontime0	4803.1999821663	Sum of GTIs [s]
date	2012-05-24T05:17:01	Date and time of file creation	ontime1	4803.1999821663	Sum of GTIs [s]
revision	2	Processing version of data	ontime2	4803.1999821663	Sum of GTIs [s]
			ontime3	4802.5774036646	Sum of GTIs [s]
			ontime6	4803.1999821663	Sum of GTIs [s]
			ontime7	4802.6184436679	Sum of GTIs [s]
			l1events	598632	Number of level 1 events

2.1.4 Events

	ccd 0	ccd 1	ccd 2	ccd 3	ccd 6	ccd 7		ccd 0	ccd 1	ccd 2	ccd 3	ccd 6	ccd 7
level 1 events	95147	95397	95689	98222	99046	115131	grade 0 events	28605	29513	28816	29526	29320	14813
rejected events	41606	40344	42536	44267	43309	39635		30%	30%	30%	30%	29%	12%
rejected %	43%	42%	44%	45%	43%	34%	grade 1 events	221	173	224	233	171	82
								0%	0%	0%	0%	0%	0%
							grade 2 events	9630	10118	8996	9239	9936	16274
								10%	10%	9%	9%	10%	14%
							grade 3 events	3581	3585	3623	3721	3556	7120
								3%	3%	3%	3%	3%	6%
							grade 4 events	3481	3445	3619	3595	3513	6921
								3%	3%	3%	3%	3%	6%
							grade 5 events	2372	2423	2176	2582	2598	6612
								2%	2%	2%	2%	2%	5%
							grade 6 events	8283	8434	8148	7874	9443	30368
								8%	8%	8%	8%	9%	26%
							grade 7 events	38974	37706	40087	41452	40509	32941
								40%	39%	41%	42%	40%	28%

2.2 Compared Parameters

Parameter	Planned	Actual	Parameter	Planned	Actual
Instrument	ACIS	ACIS	Obspar format version number	7	7
Detector	ACIS-012367	ACIS-012367	Obspar file type	PREDICTED	ACTUAL
Grating	NONE	NONE	Obspar update status	NONE	UPDATED
Data mode	FAINT	FAINT	Number of optional ACIS chips dropped	0	0
Observation mode	SECONDARY	SECONDARY	On-chip summing requested	N	N
[deg] Pointing RA	0	62.96163111758084	Subarray requested	NONE	NONE
[deg] Pointing Dec	0	42.99398618214308	Alternating exposures requested	N	N
[deg] Pointing Roll	0.0	159.2175638190529	[s] Primary exposure time	3.2	3.2
[mm] SIM focus pos	-1.429586	-0.6828225247311905			
[mm] SIM defocus	0.1037507710433287	0.8505141146731063			
[mm] SIM translation stage pos	250.455976	250.466033080201			
[mm] SIM translation stage offset	0	-0.01005468664627074			
[s] Observation start time (MET)	343377298.835971	343377297.811			
Observation start date	2008-11-18T06:34:59	2008-11-18T06:34:57			
[s] Observation end time (MET)	343399080.087045	343399079.06207			
Observation end date	2008-11-18T12:38:00	2008-11-18T12:37:59			
Read mode	TIMED	TIMED			

2.3 Star Slots

2.4 FID Slots

A Summary

A.1 Status

V&V Scientist	Beth Sundheim
V&V Date (YYYY-MM-DD)	2012.05.31
V&V Edition	1
V&V Disposition and Status	OK
V&V Charge Time	4.8026184436679

A.2 Comments