

V&V Reference Report

L2 ASCDS Version : 8.4.4

Observation 57475 - L2 Version 2
Chandra X-Ray Center

L2 Processing Date : May 24 2012

Contents

1	Front	2
2	OBI	3
2.1	OBI	3
2.1.1	Images	3
2.1.2	Bias	3
2.1.3	Parameters	4
2.1.4	Events	4
2.2	Compared Parameters	5
2.3	Star Slots	6
2.4	FID Slots	6
A	Summary	7
A.1	Status	7
A.2	Comments	7

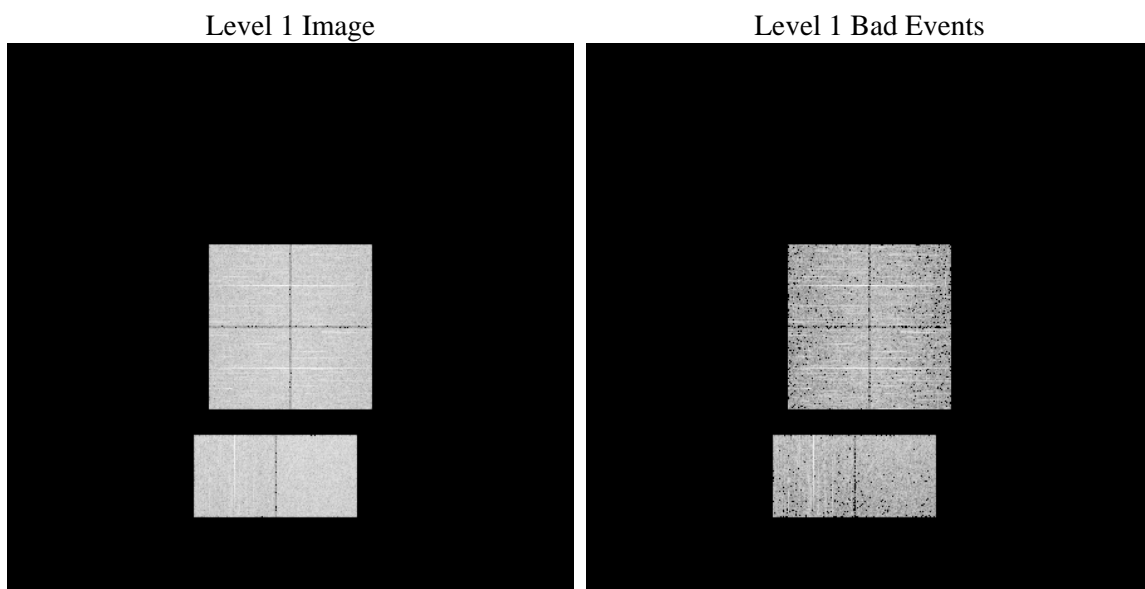
1 Front

seq_num	 	Sequence number
obs_id	57475	Observation id
title	ACIS-012367 diagnostics	Proposal title
observer	CHANDRA engineering request/realtime commanding	Principal investig
object	 	Source name
dtcycle	0	
cycle	P	events from which exps? Prim/Second/Both
ra_targ	0.0	Observer's specified target RA [deg]
dec_targ	0.0	Observer's specified target Dec [deg]
ra_nom	52.033519533397	Nominal RA [deg]
dec_nom	-2.996609467974	Nominal Dec [deg]
roll_nom	333.06354182028	Nominal Roll [deg]
revision	2	Processing version of data
ontime	2796.7999896407	Sum of GTIs [s]
livetime	2761.3852241411	Livetime [s]
ontime0	2796.7833977938	Sum of GTIs [s]
ontime1	2796.7423577905	Sum of GTIs [s]
ontime2	2796.7013177872	Sum of GTIs [s]
ontime3	2796.7999896407	Sum of GTIs [s]
ontime6	2796.6602777839	Sum of GTIs [s]
ontime7	2796.7999896407	Sum of GTIs [s]
l2events	205980	Number of level 2 events

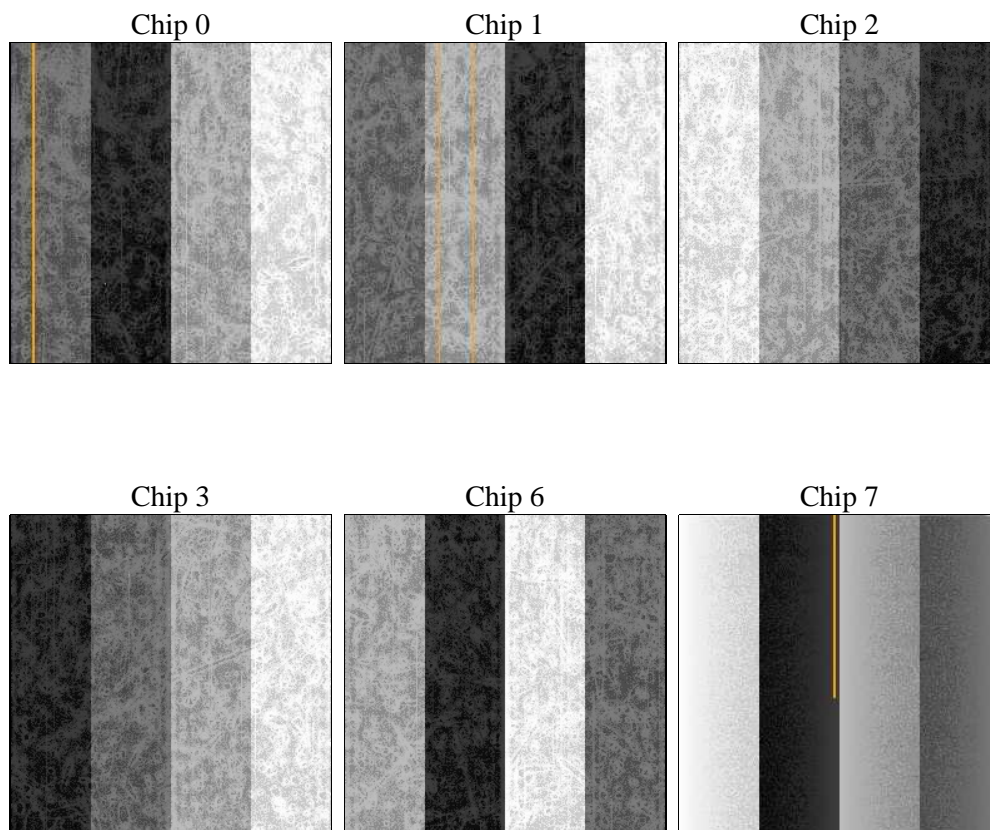
2 OBI

2.1 OBI

2.1.1 Images



2.1.2 Bias



2.1.3 Parameters

obi_num	0	Obi number	sched_exp_time	0.0	[s] Scheduled observation exposure time
ascdsver	8.4.4	Processing system revision	ontime	2796.7999896407	Sum of GTIs [s]
caldsver	4.4.9	 	ontime0	2796.7833977938	Sum of GTIs [s]
date	2012-05-24T18:38:06	Date and time of file creation	ontime1	2796.7423577905	Sum of GTIs [s]
revision	2	Processing version of data	ontime2	2796.7013177872	Sum of GTIs [s]
			ontime3	2796.7999896407	Sum of GTIs [s]
			ontime6	2796.6602777839	Sum of GTIs [s]
			ontime7	2796.7999896407	Sum of GTIs [s]
			l1events	365130	Number of level 1 events

2.1.4 Events

	ccd 0	ccd 1	ccd 2	ccd 3	ccd 6	ccd 7		ccd 0	ccd 1	ccd 2	ccd 3	ccd 6	ccd 7
level 1 events	58200	57902	58897	60236	61120	68775	grade 0 events	18134	17793	18246	18845	18230	8990
rejected events	24142	23459	25164	25885	25672	23317		31%	30%	30%	31%	29%	13%
rejected %	41%	40%	42%	42%	42%	33%	grade 1 events	140	108	141	142	118	42
								0%	0%	0%	0%	0%	0%
							grade 2 events	6046	6530	5755	5831	6355	9902
								10%	11%	9%	9%	10%	14%
							grade 3 events	2253	2268	2279	2241	2283	4225
								3%	3%	3%	3%	3%	6%
							grade 4 events	2253	2167	2259	2258	2216	4276
								3%	3%	3%	3%	3%	6%
							grade 5 events	1415	1456	1301	1534	1476	3884
								2%	2%	2%	2%	2%	5%
							grade 6 events	5372	5685	5194	5176	6364	18065
								9%	9%	8%	8%	10%	26%
							grade 7 events	22587	21895	23722	24209	24078	19391
								38%	37%	40%	40%	39%	28%

2.2 Compared Parameters

Parameter	Planned	Actual	Parameter	Planned	Actual
Instrument	ACIS	ACIS	Obspar format version number	7	7
Detector	ACIS-012367	ACIS-012367	Obspar file type	PREDICTED	ACTUAL
Grating	NONE	NONE	Obspar update status	NONE	UPDATED
Data mode	FAINT	FAINT	Number of optional ACIS chips dropped	0	0
Observation mode	SECONDARY	SECONDARY	On-chip summing requested	N	N
[deg] Pointing RA	0	52.03351953339747	Subarray requested	NONE	NONE
[deg] Pointing Dec	0	-2.996609467973969	Alternating exposures requested	N	N
[deg] Pointing Roll	0.0	333.0635418202752	[s] Primary exposure time	3.2	3.2
[mm] SIM focus pos	-1.429586	-0.7809083437167272			
[mm] SIM defocus	0.1037507710433287	0.7524282956875696			
[mm] SIM translation stage pos	250.455976	250.466033080201			
[mm] SIM translation stage offset	0	-0.01005468664627074			
[s] Observation start time (MET)	344293037.981175	344293036.95618			
Observation start date	2008-11-28T20:57:18	2008-11-28T20:57:16			
[s] Observation end time (MET)	344302002.631617	344302001.60662			
Observation end date	2008-11-28T23:26:43	2008-11-28T23:26:41			
Read mode	TIMED	TIMED			

2.3 Star Slots

2.4 FID Slots

A Summary

A.1 Status

V&V Scientist	Jen Lauer
V&V Date (YYYY-MM-DD)	2012.05.31
V&V Edition	1
V&V Disposition and Status	OK
V&V Charge Time	2.7967999896407

A.2 Comments