

# V&V Reference Report

## L2 ASCDS Version : 8.4.4

Observation 57465 - L2 Version 2  
Chandra X-Ray Center

L2 Processing Date : May 25 2012

## Contents

<b>1</b>	<b>Front</b>	<b>2</b>
<b>2</b>	<b>OBI</b>	<b>3</b>
2.1	OBI . . . . .	3
2.1.1	Images . . . . .	3
2.1.2	Bias . . . . .	3
2.1.3	Parameters . . . . .	4
2.1.4	Events . . . . .	4
2.2	Compared Parameters . . . . .	5
2.3	Star Slots . . . . .	6
2.4	FID Slots . . . . .	6
<b>A</b>	<b>Summary</b>	<b>7</b>
A.1	Status . . . . .	7
A.2	Comments . . . . .	7

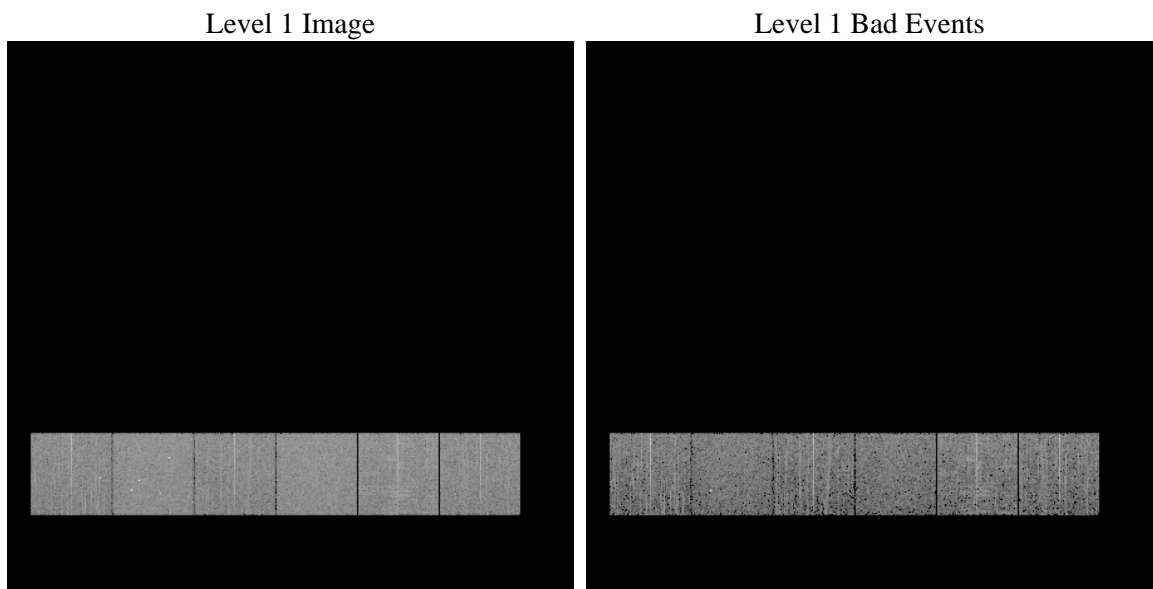
# 1 Front

seq_num	&#160	Sequence number
obs_id	57465	Observation id
title	ACIS-456789 diagnostics	Proposal title
observer	CHANDRA engineering request/realtime commanding	Principal investig
object	&#160	Source name
dtcycle	0	&#160
cycle	P	events from which exps? Prim/Second/Both
ra_targ	0.0	Observer's specified target RA [deg]
dec_targ	0.0	Observer's specified target Dec [deg]
ra_nom	101.99991949675	Nominal RA [deg]
dec_nom	5.0287149287542	Nominal Dec [deg]
roll_nom	57.301637580453	Nominal Roll [deg]
revision	2	Processing version of data
ontime	2790.3999896646	Sum of GTIs [s]
livetime	2755.0662648183	Livetime [s]
ontime4	2790.3999896646	Sum of GTIs [s]
ontime5	2790.3999896646	Sum of GTIs [s]
ontime6	2790.3999896646	Sum of GTIs [s]
ontime7	2790.3999896646	Sum of GTIs [s]
ontime8	2790.3999896646	Sum of GTIs [s]
ontime9	2790.3999896646	Sum of GTIs [s]
l2events	194474	Number of level 2 events

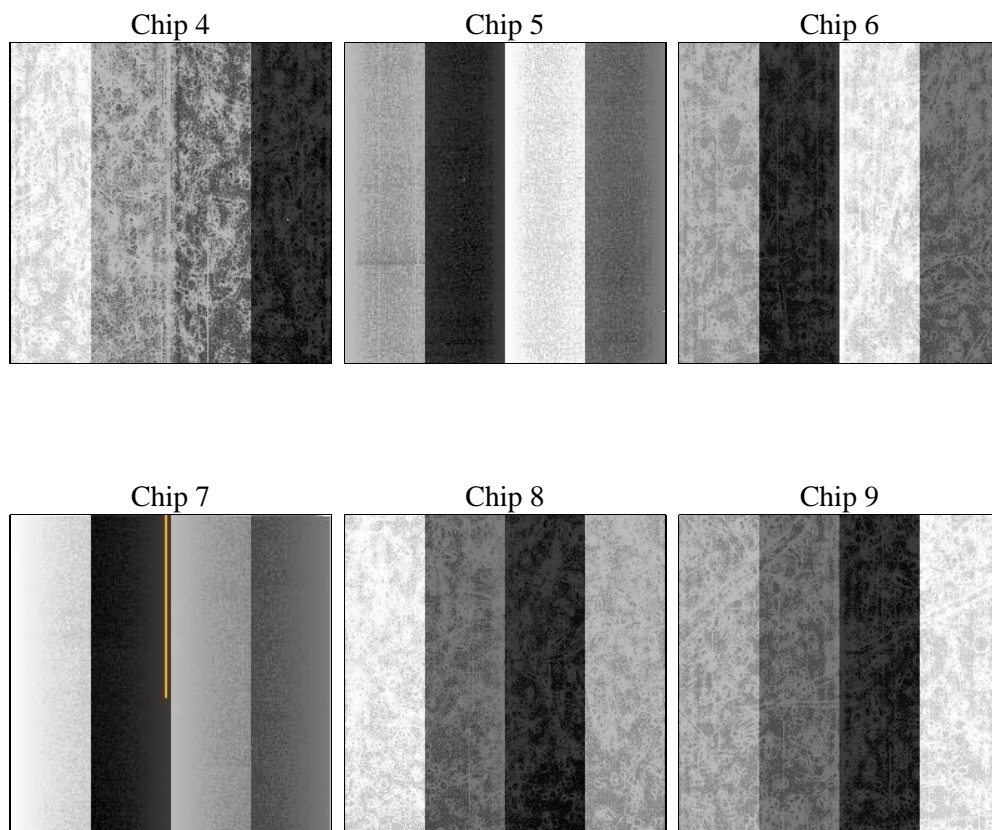
## 2 OBI

### 2.1 OBI

#### 2.1.1 Images



#### 2.1.2 Bias



### 2.1.3 Parameters

obi_num	0	Obi number	sched_exp_time	0.0	[s] Scheduled observation exposure time
ascdsver	8.4.4	Processing system revision	ontime	2790.3999896646	Sum of GTIs [s]
caldsver	4.4.9	&#160	ontime4	2790.3999896646	Sum of GTIs [s]
date	2012-05-25T20:16:21	Date and time of file creation	ontime5	2790.3999896646	Sum of GTIs [s]
revision	2	Processing version of data	ontime6	2790.3999896646	Sum of GTIs [s]
			ontime7	2790.3999896646	Sum of GTIs [s]
			ontime8	2790.3999896646	Sum of GTIs [s]
			ontime9	2790.3999896646	Sum of GTIs [s]
			l1events	371726	Number of level 1 events

### 2.1.4 Events

	ccd 4	ccd 5	ccd 6	ccd 7	ccd 8	ccd 9		ccd 4	ccd 5	ccd 6	ccd 7	ccd 8	ccd 9
level 1 events	58198	68300	56880	65783	65282	57283	grade 0 events	17127	7556	16265	8276	17853	16404
rejected events	28526	25502	25830	23311	29695	26831		29%	11%	28%	12%	27%	28%
rejected %	49%	37%	45%	35%	45%	46%	grade 1 events	157	790	99	48	116	132
								0%	1%	0%	0%	0%	0%
							grade 2 events	4633	15002	5528	9435	6634	5222
								7%	21%	9%	14%	10%	9%
							grade 3 events	2042	1998	1971	3971	2445	2035
								3%	2%	3%	6%	3%	3%
							grade 4 events	2000	2025	2040	3852	2390	1997
								3%	2%	3%	5%	3%	3%
							grade 5 events	1444	3265	1503	3895	1978	1682
								2%	4%	2%	5%	3%	2%
							grade 6 events	3902	16265	5275	16989	6328	4826
								6%	23%	9%	25%	9%	8%
							grade 7 events	26893	21399	24199	19317	27538	24985
								46%	31%	42%	29%	42%	43%

## 2.2 Compared Parameters

Parameter	Planned	Actual	Parameter	Planned	Actual
Instrument	ACIS	ACIS	Obspar format version number	7	7
Detector	ACIS-456789	ACIS-456789	Obspar file type	PREDICTED	ACTUAL
Grating	NONE	NONE	Obspar update status	NONE	UPDATED
Data mode	FAINT	FAINT	Number of optional ACIS chips dropped	0	0
Observation mode	SECONDARY	SECONDARY	On-chip summing requested	N	N
[deg] Pointing RA	0	101.9999194967482	Subarray requested	NONE	NONE
[deg] Pointing Dec	0	5.028714928754175	Alternating exposures requested	N	N
[deg] Pointing Roll	0.0	57.30163758045254	[s] Primary exposure time	3.2	3.2
[mm] SIM focus pos	-1.429586	-0.6828225247311905			
[mm] SIM defocus	0.1037507710433287	0.8505141146731063			
[mm] SIM translation stage pos	250.455976	250.466033080201			
[mm] SIM translation stage offset	0	-0.01005468664627074			
[s] Observation start time (MET)	344750073.203738	344750072.17876			
Observation start date	2008-12-04T03:54:33	2008-12-04T03:54:32			
[s] Observation end time (MET)	344793389.705876	344793388.6809			
Observation end date	2008-12-04T15:56:30	2008-12-04T15:56:28			
Read mode	TIMED	TIMED			

## **2.3 Star Slots**

## **2.4 FID Slots**

## A Summary

### A.1 Status

V&V Scientist	Jen Lauer
V&V Date (YYYY-MM-DD)	2012.06.01
V&V Edition	1
V&V Disposition and Status	OK
V&V Charge Time	2.7903999896646

### A.2 Comments