

V&V Reference Report

L2 ASCDS Version : 8.4.4

Observation 58587 - L2 Version 3
Chandra X-Ray Center

L2 Processing Date : Apr 17 2012

Contents

1	Front	2
2	OBI	3
2.1	OBI	3
2.1.1	Images	3
2.1.2	Bias	3
2.1.3	Parameters	4
2.1.4	Events	4
2.2	Compared Parameters	5
2.3	Star Slots	6
2.4	FID Slots	6
A	Summary	7
A.1	Status	7
A.2	Comments	7

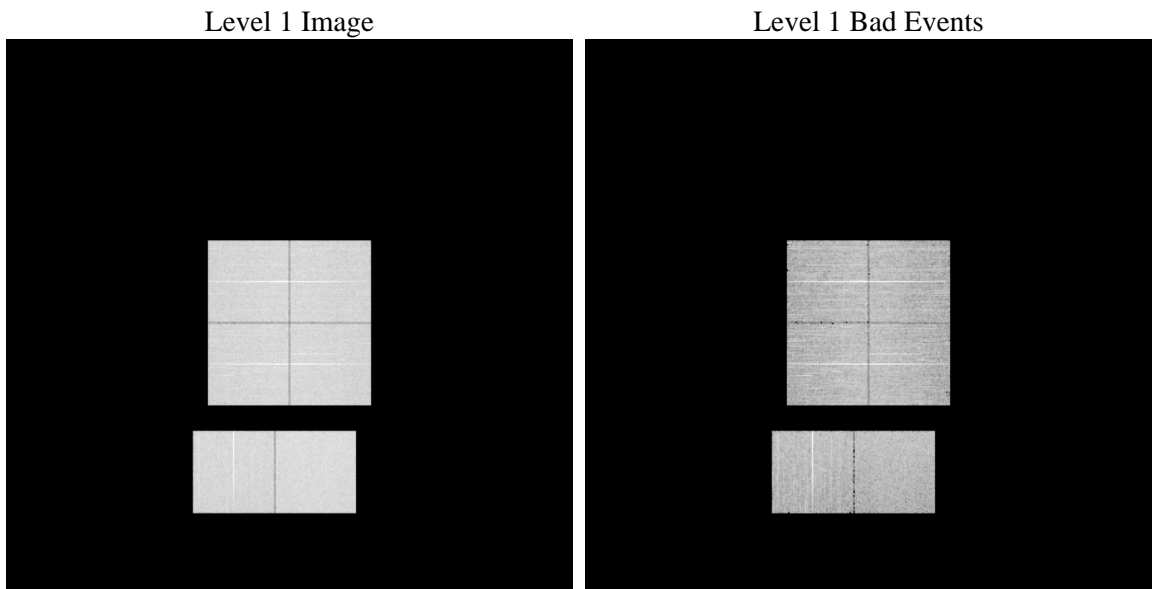
1 Front

seq_num	 	Sequence number
obs_id	58587	Observation id
title	ACIS-012367 diagnostics	Proposal title
observer	CHANDRA engineering request/realtime commanding	Principal investig
object	 	Source name
dtcycle	0	
cycle	P	events from which exps? Prim/Second/Both
ra_targ	0.0	Observer's specified target RA [deg]
dec_targ	0.0	Observer's specified target Dec [deg]
ra_nom	56.673432830633	Nominal RA [deg]
dec_nom	-14.837965066134	Nominal Dec [deg]
roll_nom	191.92552461027	Nominal Roll [deg]
revision	3	Processing version of data
ontime	8124.7999697924	Sum of GTIs [s]
livetime	8021.9188604077	Livetime [s]
ontime0	8124.7999697924	Sum of GTIs [s]
ontime1	8124.7683205009	Sum of GTIs [s]
ontime2	8124.7272804976	Sum of GTIs [s]
ontime3	8124.7999697924	Sum of GTIs [s]
ontime6	8124.6862404943	Sum of GTIs [s]
ontime7	8124.7999697924	Sum of GTIs [s]
l2events	787770	Number of level 2 events

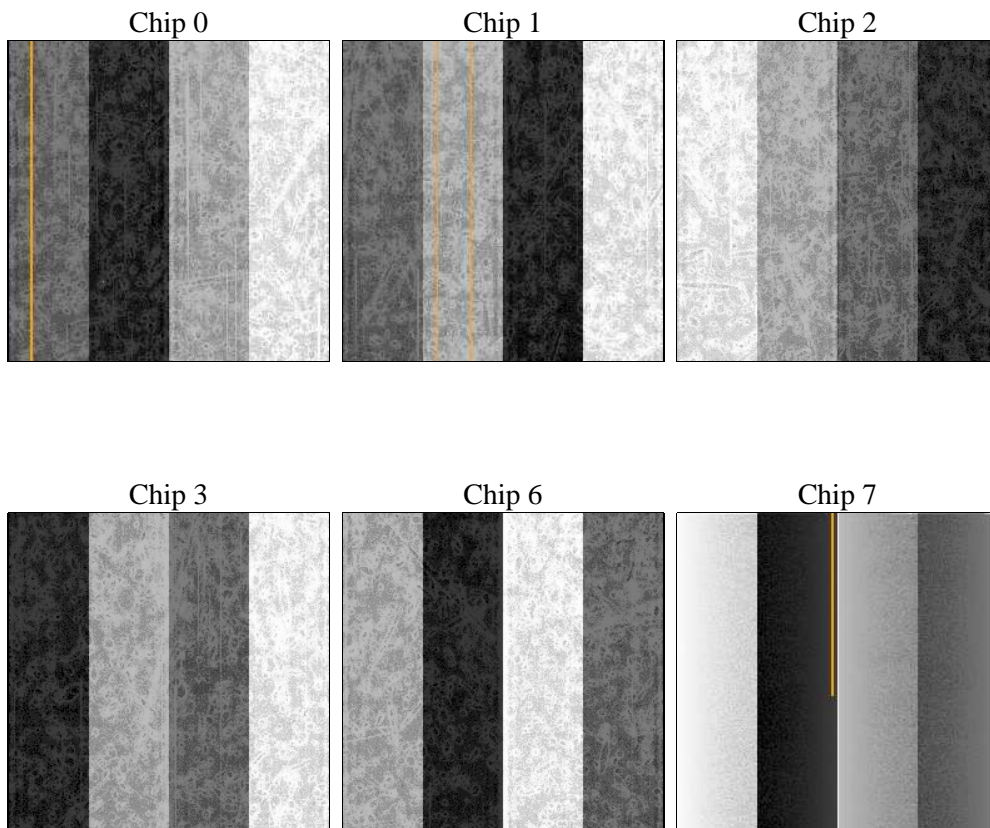
2 OBI

2.1 OBI

2.1.1 Images



2.1.2 Bias



2.1.3 Parameters

obi_num	0	Obi number	sched_exp_time	7440	[s] Scheduled observation exposure time
ascdsver	8.4.4	Processing system revision	ontime	8124.7999697924	Sum of GTIs [s]
caldsver	4.4.9	 	ontime0	8124.7999697924	Sum of GTIs [s]
date	2012-04-17T21:20:41	Date and time of file creation	ontime1	8124.7683205009	Sum of GTIs [s]
revision	3	Processing version of data	ontime2	8124.7272804976	Sum of GTIs [s]
			ontime3	8124.7999697924	Sum of GTIs [s]
			ontime6	8124.6862404943	Sum of GTIs [s]
			ontime7	8124.7999697924	Sum of GTIs [s]
			l1events	1241362	Number of level 1 events

2.1.4 Events

	ccd 0	ccd 1	ccd 2	ccd 3	ccd 6	ccd 7		ccd 0	ccd 1	ccd 2	ccd 3	ccd 6	ccd 7
level 1 events	200059	197662	205247	203390	207916	227088	grade 0 events	72397	71941	74930	75397	75197	36504
rejected events	68774	66172	72563	70350	70191	63127		36%	36%	36%	37%	36%	16%
rejected %	34%	33%	35%	34%	33%	27%	grade 1 events	491	413	527	552	413	172
								0%	0%	0%	0%	0%	0%
							grade 2 events	23742	24271	23145	23205	24661	36266
								11%	12%	11%	11%	11%	15%
							grade 3 events	8808	8664	8998	8856	8891	16386
								4%	4%	4%	4%	4%	7%
							grade 4 events	8892	8689	8861	8968	8879	16467
								4%	4%	4%	4%	4%	7%
							grade 5 events	3810	3845	3629	4268	4157	10277
								1%	1%	1%	2%	1%	4%
							grade 6 events	19910	20386	19251	18980	22664	61333
								9%	10%	9%	9%	10%	27%
							grade 7 events	62009	59453	65906	63164	63054	49683
								30%	30%	32%	31%	30%	21%

2.2 Compared Parameters

Parameter	Planned	Actual	Parameter	Planned	Actual
Instrument	ACIS	ACIS	Obspar format version number	7	7
Detector	ACIS-012367	ACIS-012367	Obspar file type	PREDICTED	ACTUAL
Grating	NONE	NONE	Obspar update status	OVERRIDE	OVERRIDE
Data mode	FAINT	FAINT	Number of optional ACIS chips dropped	0	0
Observation mode	SECONDARY	SECONDARY	On-chip summing requested	N	N
[deg] Pointing RA	56.6733288540064	56.67343283063288	Subarray requested	NONE	NONE
[deg] Pointing Dec	-14.83793749568974	-14.83796506613371	Alternating exposures requested	N	N
[deg] Pointing Roll	191.9254984812902	191.9255246102709	[s] Primary exposure time	3.2	3.2
[mm] SIM focus pos	-0.78090834371673	-0.78090834371673			
[mm] SIM defocus	0.7524282194390134	0.7524282194390134			
[mm] SIM translation stage pos	250.4635187649	250.4635187649			
[mm] SIM translation stage offset	-0.007542945905271381	-0.007542945905271381			
[s] Observation start time (MET)	284475343.727765	284475343.727765			
Observation start date	2007-01-06T13:22:00	2007-01-06T12:55:43			
[s] Observation end time (MET)	284492253.179396	284492253.179396			
Observation end date	2007-01-06T15:26:00	2007-01-06T17:37:33			
Read mode	TIMED	TIMED			

2.3 Star Slots

2.4 FID Slots

A Summary

A.1 Status

V&V Scientist	Beth Sundheim
V&V Date (YYYY-MM-DD)	2012.04.19
V&V Edition	1
V&V Disposition and Status	OK
V&V Charge Time	8.1247999697924

A.2 Comments