

V&V Reference Report

L2 ASCDS Version : 8.4.4

Observation 58551 - L2 Version 2
Chandra X-Ray Center

L2 Processing Date : Apr 19 2012

Contents

1	Front	2
2	OBI	3
2.1	OBI	3
2.1.1	Images	3
2.1.2	Bias	3
2.1.3	Parameters	4
2.1.4	Events	4
2.2	Compared Parameters	5
2.3	Star Slots	6
2.4	FID Slots	6
A	Summary	7
A.1	Status	7
A.2	Comments	7

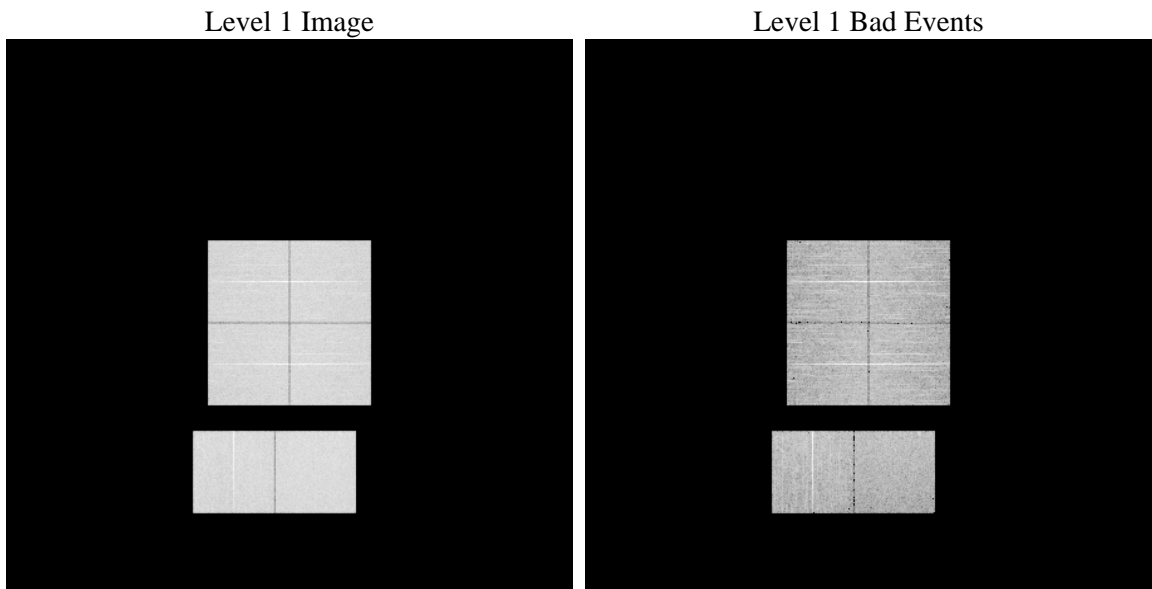
1 Front

seq_num	 	Sequence number
obs_id	58551	Observation id
title	ACIS-012367 diagnostics	Proposal title
observer	CHANDRA engineering request/realtime commanding	Principal investig
object	 	Source name
dtcycle	0	
cycle	P	events from which exps? Prim/Second/Both
ra_targ	0.0	Observer's specified target RA [deg]
dec_targ	0.0	Observer's specified target Dec [deg]
ra_nom	165.98329600317	Nominal RA [deg]
dec_nom	20.024066657043	Nominal Dec [deg]
roll_nom	90.202602789351	Nominal Roll [deg]
revision	2	Processing version of data
ontime	6572.799975574	Sum of GTIs [s]
livetime	6489.5712246183	Livetime [s]
ontime0	6391.3040988445	Sum of GTIs [s]
ontime1	6465.8471650481	Sum of GTIs [s]
ontime2	6397.7861982584	Sum of GTIs [s]
ontime3	6404.268208921	Sum of GTIs [s]
ontime6	6482.0520368814	Sum of GTIs [s]
ontime7	6572.799975574	Sum of GTIs [s]
l2events	781602	Number of level 2 events

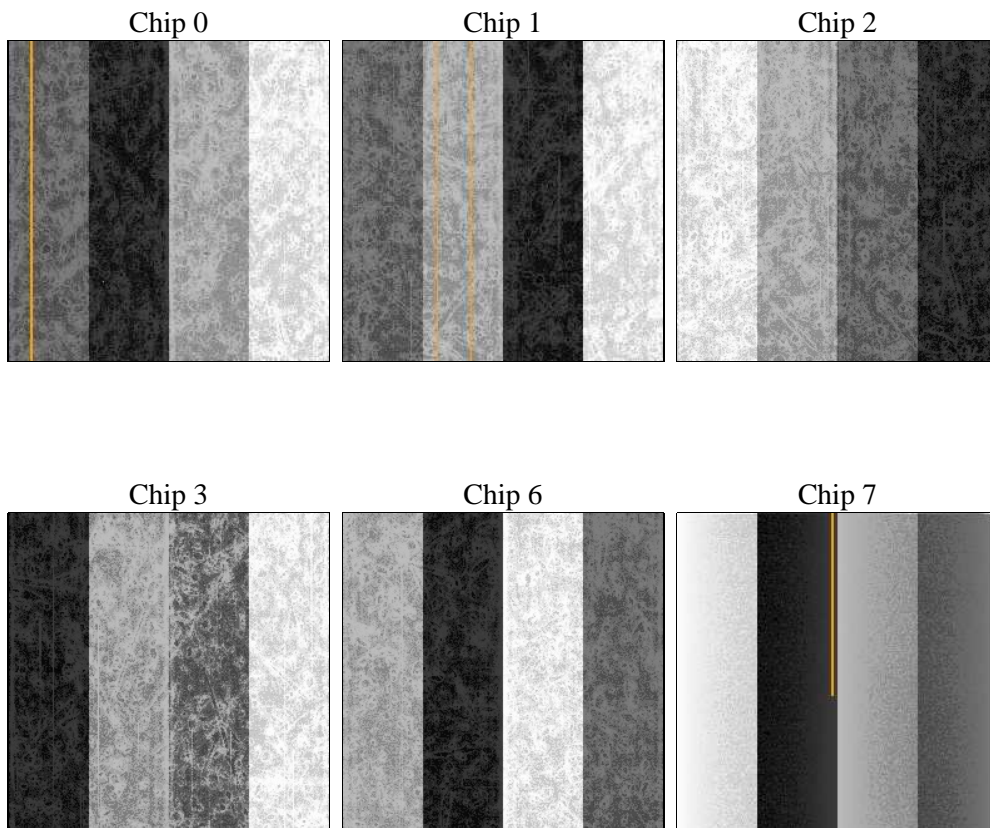
2 OBI

2.1 OBI

2.1.1 Images



2.1.2 Bias



2.1.3 Parameters

obi_num	0	Obi number	sched_exp_time	0.0	[s] Scheduled observation exposure time
ascdsver	8.4.4	Processing system revision	ontime	6572.799975574	Sum of GTIs [s]
caldsver	4.4.9	 	ontime0	6391.3040988445	Sum of GTIs [s]
date	2012-04-19T14:29:33	Date and time of file creation	ontime1	6465.8471650481	Sum of GTIs [s]
revision	2	Processing version of data	ontime2	6397.7861982584	Sum of GTIs [s]
			ontime3	6404.268208921	Sum of GTIs [s]
			ontime6	6482.0520368814	Sum of GTIs [s]
			ontime7	6572.799975574	Sum of GTIs [s]
			l1events	1166250	Number of level 1 events

2.1.4 Events

	ccd 0	ccd 1	ccd 2	ccd 3	ccd 6	ccd 7		ccd 0	ccd 1	ccd 2	ccd 3	ccd 6	ccd 7
level 1 events	187252	189138	186392	194281	200200	208987	grade 0 events	68924	68532	69655	72610	71016	36121
rejected events	57240	55443	58564	60906	61078	50151		36%	36%	37%	37%	35%	17%
rejected %	30%	29%	31%	31%	30%	23%	grade 1 events	511	402	520	550	465	152
								0%	0%	0%	0%	0%	0%
							grade 2 events	22704	25723	21041	22309	25225	35172
								12%	13%	11%	11%	12%	16%
							grade 3 events	8322	8253	8311	8553	8309	14096
								4%	4%	4%	4%	4%	6%
							grade 4 events	8359	8358	8291	8607	8404	14009
								4%	4%	4%	4%	4%	6%
							grade 5 events	3064	3228	2942	3476	3411	8125
								1%	1%	1%	1%	1%	3%
							grade 6 events	21785	22895	20590	21380	26236	59514
								11%	12%	11%	11%	13%	28%
							grade 7 events	53583	51747	55042	56796	57134	41798
								28%	27%	29%	29%	28%	20%

2.2 Compared Parameters

Parameter	Planned	Actual
Instrument	ACIS	ACIS
Detector	ACIS-012367	ACIS-012367
Grating	NONE	NONE
Data mode	FAINT	FAINT
Observation mode	SECONDARY	SECONDARY
[deg] Pointing RA	0	165.9832960031744
[deg] Pointing Dec	0	20.02406665704348
[deg] Pointing Roll	0.0	90.20260278935072
[mm] SIM focus pos	-0.782348	-0.6828225247311905
[mm] SIM defocus	0	0.8505141146731063
[mm] SIM translation stage pos	-233.592463	250.4635187648994
[mm] SIM translation stage offset	0	-0.007540371344731511
[s] Observation start time (MET)	286712402.233767	286712401.20879
Observation start date	2007-02-01T10:20:02	2007-02-01T10:20:01
[s] Observation end time (MET)	286728302.03452	286728301.00955
Observation end date	2007-02-01T14:45:02	2007-02-01T14:45:01
Read mode	TIMED	TIMED

Parameter	Planned	Actual
Obspar format version number	7	7
Obspar file type	PREDICTED	ACTUAL
Obspar update status	NONE	UPDATED
On-chip summing requested	N	N
Subarray requested	NONE	NONE
Alternating exposures requested	N	N
[s] Primary exposure time	3.2	3.2

2.3 Star Slots

2.4 FID Slots

A Summary

A.1 Status

V&V Scientist	Beth Sundheim
V&V Date (YYYY-MM-DD)	2012.04.20
V&V Edition	1
V&V Disposition and Status	OK
V&V Charge Time	6.572799975574

A.2 Comments